

1 Year Full-time / 2 Years Part-time  
CME, CNE, CDE Accredited

# MScGI

## MASTER OF SCIENCE IN GASTROENTEROLOGY



Join our  
**INFO SESSION**  
28 February 2022



2022 INTAKE

# The M.Sc. in GASTROENTEROLOGY

offered by the Institute of Digestive Disease (IDD) of The Chinese University of Hong Kong (CUHK), is Asia's first and only postgraduate programme in gastroenterology. Our mission is to provide comprehensive training for physicians, nurses and other healthcare practitioners to help them become a leading expert in digestive diseases.

## Who Can Study The Programme?

You don't have to be a gastroenterologist or an aspiring one to enrol in our programme. Our alumni come from diverse professional backgrounds:

- Fresh degree graduates
- Researchers
- Allied health practitioners
- Radiation therapists
- Doctors
- Pharmacists
- Nutritionists
- Nurses
- Dietitians
- Chinese medicine practitioners

## Programme Structure & Course Offerings

### FULL TIME ( 1 Year )

#### SEMESTER 1

##### Principles in Gastroenterology

- Investigations in Gastroenterology
- Interventions and Pharmacology in Gastroenterology
- Nutrition and Dietetics

##### Statistics & Research Methodology

- Epidemiology and Clinical Research

#### SEMESTER 2

##### GI & Liver Diseases

- Upper Gastrointestinal Diseases
- Liver, Hepatobiliary, and Pancreatic Diseases
- Small Bowel and Colonic Diseases
- Practical Workshops

##### Communication & Health Administration

- Medical Ethics, Communication, and Law
- Health Service Management & Healthcare Administration
- Professional Communication Workshop

#### SEMESTER 3

##### Management in GI Diseases

- Psychological Intervention, Counseling and Complementary Medicine
- Interactive Workshops - Practical Management of Common GI Diseases

##### Project & Dissertation

### PART TIME ( 2 Years )

#### YEAR ONE

#### SEMESTER 1

##### Principles in Gastroenterology

- Investigations in Gastroenterology
- Interventions and Pharmacology in Gastroenterology
- Nutrition and Dietetics

#### SEMESTER 2

##### GI & Liver Diseases

- Upper Gastrointestinal Diseases
- Liver, Hepatobiliary, and Pancreatic Diseases
- Small Bowel and Colonic Diseases
- Practical Workshops

#### SEMESTER 3

##### Management in GI Diseases

- Psychological Intervention, Counseling and Complementary Medicine
- Interactive Workshops - Practical Management of Common GI Diseases

#### YEAR TWO

#### SEMESTER 1

##### Statistics & Research Methodology

- Epidemiology and Clinical Research

#### SEMESTER 2

##### Communication & Health Administration

- Medical Ethics, Communication, and Law
- Health Service Management & Healthcare Administration
- Professional Communication Workshop

#### SEMESTER 3

##### Project & Dissertation

\* Classes take place on weekday evenings at Prince of Wales Hospital.

# 5 Key Features of the Programme

## I

### **Multi-disciplinary Approach Teaching: Broad Spectrum of Knowledge**

#### **Relevant Courses**

GAST5002 - Interventions and Pharmacology in Gastroenterology

GAST5003 - Nutrition and Dietetics

GAST5005 - Liver, Hepatobiliary, and Pancreatic Diseases

GAST5007 - Psychological Intervention, Counselling and Complementary Medicine

By combining the expertise from different medical specialisation, this master's programme aims to deliver a medical education with a multi-disciplinary approach to better prepare future generations of medical professionals to enhance care and treatment for patients with gastrointestinal and liver diseases.

Students will learn from experts of gastroenterology, hepatology, surgery, radiology, pharmacology, endoscopy, psychiatry as well as nutrition and dietetics. On completion of the programme, students will gain comprehensive knowledge of the principles in gastroenterology.

“ I gained a better understanding of diseases like chronic hepatitis B and IBD. The teaching on research methods, medical statistics, clinical governance and health administration has filled the gap in my specialist training. ”

**Philip SHUM**  
Specialist in Paediatrics  
Gleneagles Hong Kong Hospital  
Alumnus 2014

## **Putting Theory into Practice**

#### **Relevant Courses**

GAST5006 - Small Bowel and Colonic Diseases

GAST5008 - Interactive Workshops - Practical Management of Common GI Diseases

Students benefit significantly from acquiring hands-on experience during their studies.

They are expected to complete a series of practical sessions by the end of the programme. Our clinical practice and interactive workshops provide students with real-world exposure to patient care, allowing them to put theory into practice.

Students will gain valuable experience from each practical session and develop the confidence to become an expert in gastroenterology.

“ Through the diverse courses and assignments, I gained deeper medical insight and advanced my counseling and research skills, which help optimize the nutrition management of my most complex patients. ”

**Nanette Frances HO**  
Clinical Dietitian  
Surrey Memorial Hospital,  
Fraser Health, Canada  
Alumnus 2019

## II



## Evaluative and Critical Thinking Skills Training

### Relevant Courses

GAST5016 - Project and Dissertation

GAST5017 - Epidemiology and Clinical Research

The advancement of medicine is fuelled by medical research. Keeping up with new knowledge is essential to staying competitive for future challenges. For healthcare professionals to acquire unbiased new information, skills to critically appraise medical literature are crucial. Our programme equips students with cutting-edge research methodologies, medical statistics and clinical practices.

“This degree sets me apart from my competitors and helped me launch my medical career. Only several months after I certified my degree in China, I landed a full-time position at the Nanfang Hospital in Guangzhou.”

**Lucas LIU**  
State Key Laboratory of  
Organ Failure Research  
Nanfang Hospital  
Alumnus 2014

## Invaluable Network

Our students come from various countries and professional backgrounds. There are ample opportunities to meet and network with professionals within your specialty or from a diverse field of specialties and participate in world-class medical events, including the International Digestive Disease Forum (IDDF) and The Practical Workshop in Diagnostic and Therapeutic Endoscopy. Students will meet top scholars and some of the most influential speakers from around the world. Get ready to be inspired and expand your horizon!



“The most beneficial aspect of this master programme is that the lectures are delivered by clinical professors and practicing doctors. It is an impressive experience to learn and interact with those prominent figures in the GI field.”

**Sin Lun LEE**  
Registered Nurse  
United Christian Hospital  
Alumnus 2015



## Excellent Leadership Development

### Relevant Courses

GAST5009 - Medical Ethics, Communication and Law

GAST5010 - Health Service Management & Healthcare Administration

GAST5011 - Professional Communication Workshop

This postgraduate programme offers a range of useful knowledge from communication skills to healthcare management. Our lecturers include senior managers in healthcare policy, experienced human resource managers and training consultants who teach solving skills, complaint management, crisis management and strategic planning. Advanced management techniques can help students establish an outstanding portfolio to reach their future career goals.

“Studying in this master course is an important step to advance my career. Not only do I find this course useful for my work, but also equipped me with management skills and knowledge in all kinds of interesting ways.”

**Sze Man LAI**  
Advanced Practice Nurse  
Prince of Wales Hospital  
Alumnus 2014



**CHAN Hiu Yan, Sharon**  
Dietitian  
North District Hospital  
Alumnus 2020

This programme provides an excellent platform for dietitians to bridge the knowledge gap between nutritional and clinical management of various gastroenterological diseases. Lectures delivered by experts from different specialties have provided me with insight into the disease in a multidisciplinary perspective, and the practicum sessions in endoscopy and minimal-invasive surgery were eye-opening for allied health professionals. The medical statistics and research methodologies module also equipped me with updated knowledge to carry out research projects and to critically appraise literature for evidence-based practice. Thanks to this fruitful programme, I am now able to deliver a more comprehensive and effective nutrition intervention for my patients with a deeper understanding of the relationship between nutrition and the clinical course and management plan of the underlying gastrointestinal diseases.

## 66 Alumni Voices 99

It was a remarkable experience with a combination of studying and practical learning. It introduced a variety of knowledge over different GI topics, which are not only useful for working in related aspects, but also can be applicable for daily use. It also equipped me with leadership skills, research methods and critical thinking which are important in any setting. With the skills and knowledge acquired in the programme, it is one step closer to explore the new boundary in the GI field. I am proud to say I made a right decision to join the programme.



**LIU Tsz Sum Rosa**  
Registered Nurse  
St. Paul's Hospital  
Alumnus 2018



[www.idd.cuhk.edu.hk/  
mscgi-alumni-voices/](http://www.idd.cuhk.edu.hk/mscgi-alumni-voices/)



**Watch the video to find out how our alumni excel in their career paths discovered through the programme.**



**Thomas LAM**  
Research Assistant Professor  
Alumnus 2013



**CHAN Lok Tsung**  
Dietitian  
Alumnus 2019



**Bess TSUI**  
Pediatric Surgeon  
Alumnus 2020



**Angel MA**  
Hepatology Nurse  
Alumnus 2018

## Bright Career Prospects

• Based on the alumni survey from students graduated between 2013 - 2019

**50%**

of alumni received a promotion during the first 2 years after graduation

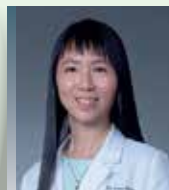
**50%**

of alumni received a salary increase of 21% and above after graduation

**100%**

of alumni would recommend this programme to their peers & colleagues

## Faculty Highlights



**Programme Director**  
**Prof. Grace Lai-hung WONG**

**Assistant Dean (Learning Experience)**  
Faculty of Medicine, CUHK

**Prof. Joseph Jao-yiu SUNG**

**Senior Vice President (Health & Life Sciences)**  
Dean, Lee Kong Chian School of Medicine  
Nanyang Technological University, Singapore



**Prof. Eng-kiong YEOH**

**Professor of Public Health**  
The Jockey Club School of Public Health  
and Primary Care, CUHK

**Prof. Hong FUNG**

**Executive Director and  
Chief Executive Officer**  
CUHK Medical Centre



# Why Choose M.Sc. GI at CUHK?

## We are the best in Asia.

CU Medicine ranked #8 in the world and #1 in Asia as the 2022 Best Global Universities for Gastroenterology and Hepatology by the *U.S. News & World Report*.

## We are excellent in teaching.

Teaching faculty is made up of 50+ foremost experts and leading healthcare professionals, including gastroenterologists, hepatologists, physicians, surgeons, endoscopists, radiologists, nurses, dietitians, clinical psychologists, hospital managers and chief executives, health informatics specialists and clinical doctors. The multi-disciplinary approach to teaching helps students excel.

## The programme is designed by the top GI institute.

Institute of Digestive Disease (IDD) is known for its excellence in research that has revolutionised the management of gastrointestinal diseases and reshaped clinical practice guidelines around the world. Four Professors of IDD have named “**Highly Cited Researchers 2020**” by Clarivate Web of Science.



Prof.  
Vincent WONG



Prof.  
Siew NG



Prof.  
Joseph SUNG



Prof.  
Henry CHAN

## Things You Need To Know About Applying M.Sc. GI

### Entry Requirements

Applicants should have obtained a bachelor's degree in a healthcare related discipline or biomedical sciences from a recognised institute or equivalent. They should fulfil the University's minimum English language requirements.

*For details, please see:*

[www.idd.cuhk.edu.hk/mscgi-application](http://www.idd.cuhk.edu.hk/mscgi-application)

### Tuition Fee: HK\$143,000\*

One Year Full-time      Paid in 2 installments

Two Years Part-time      Paid in 4 installments

*\*Your first payment is required to confirm your enrolment.*

### Application Deadline

30 April 2022

## HOW TO APPLY

### 1. Online Application

Apply online at

[www.idd.cuhk.edu.hk/mscgi-application](http://www.idd.cuhk.edu.hk/mscgi-application)



### 2. Submit Supporting Documents

After the online submission, quote the “Application No.” and send the required supporting documents to Institute of Digestive Disease office before the application deadline.

### 3. Application Results

Check application results on CUHK Graduate School's website from January to August.

### 4. Application Succeed!

Successful applicants will receive their offer letter by mail.

## Contact Us

Institute of Digestive Disease,  
The Chinese University of Hong Kong

Room 94020, 7/F, Lui Che Woo Clinical Sciences Building,  
Prince of Wales Hospital, Shatin, N.T., Hong Kong

Tel: (852) 2637 3201 Fax: (852) 2646 8915

Email: [postgrad.gi@cuhk.edu.hk](mailto:postgrad.gi@cuhk.edu.hk)

[www.idd.cuhk.edu.hk/mscgi/](http://www.idd.cuhk.edu.hk/mscgi/)

| Master of Science in Gastroenterology |