



## Gathering of Chinese Physicists on CUHK Campus



Over 300 Chinese scientists the world over gathered on the University campus from 31st July to 4th August to take part in the Third Joint Meeting of Chinese Physicists Worldwide. Entitled 'Role of Physics in the New Millennium: Research, Education, and Society', the meeting was jointly organized by the Overseas Chinese Physics Association (OCPA) and the University.

The meeting, the third in the series coorganized by OCPA and the first to be held in Hong Kong, provided an excellent platform for all ethnic Chinese physicists from different parts of the world to discuss problems of common interest, exchange research experience, and investigate possibilities for future collaboration. There were seven plenary sessions, of which three were dedicated to the memory of renowned Chinese

physicists of the century, namely, Prof. T.Y. Wu, Prof. C.S. Wu, and Prof. Xie Xide. There were also 60 parallel sessions focussing on 12 different areas of physics including astrophysics, biophysics, computational physics, condensed matter theory, and theoretical physics. Participants included internationally famous scientists such as C.N. Yang, T.D. Lee, Samuel C.C. Ting, S.T. Yau, Paul Chu, and Zhao Zhongxian.

Officiating at the opening ceremony of the meeting were Mrs. Fanny Law, Secretary for Education and Manpower of the HKSAR, Prof. Arthur K.C. Li, vice-chancellor of the University, Dr. C. Y. Wong, chair of OCPA, Profs. N.P. Chang and Kenneth Young, co-chairs of the international organizing committee, and Prof. Lai Hon-ming, chair of the local organizing committee.

## Patients to Benefit from New Method of Detecting Heart Attacks

Diagnosis of a heart attack at the early stages has never been easy. Many sufferers experience a tight squeezing chest pain but this type of pain may occur with other conditions too, such as indigestion. For this reason, doctors at accident and emergency departments have always been faced with the problem of wrongly sending home patients with heart problems but admitting those without.

Doctors at the University's Department of Medicine and Therapeutics and the Accident and Emergency Medicine Academic Unit have recently adopted a new bedside test for the speedy diagnosis of patients with a suspected acute heart attack or angina. The test is more



sensitive and accurate than the standard tests and results can be obtained immediately. Unnecessary tests and treatment for those who don't actually have heart problems can now be avoided. The average length of hospital stay for patients is also significantly shortened. More importantly, the test can save lives.

## New Technology Centre to Boost University-Industry Cooperation



A state-of-the-art technology centre was officially set up on 24th July 2000 by Elec & Eltek Technology Center (Holdings) Ltd. (the 'JV Co.'), a joint venture between The Chinese University of Hong Kong Foundation Ltd. and Elec & Eltek Technology Investment Ltd.

Named the 'CUHK-Elec & Eltek Technology Centre', it will be operated by JV Co. to promote innovative and emerging technologies and invest in any viable ventures derived from such technologies. It will act as a reciprocal channel enabling technology transfer from academia to industry as well as the flow of new ideas from industry to academia. It will also serve as a pre-incubation and incubation centre for IT

entrepreneurs, and a continuing education centre offering frontier professional training to practising engineers.

The establishment of the centre will provide more opportunities for the University's projects to be commercialized, and will enable the University to receive greater input from industry.

Mrs. Carrie Yau (left 4), Secretary for Information Technology and Broadcasting of the HKSAR, Prof. Arthur K. C. Li (left 5), vice-chancellor of the University, and Mr. David So Cheung-sing (left 3), chairman and chief managing director of Elec & Eltek International Holdings Ltd., officiated at the launch ceremony of the centre.

## Make Education a Lifelong Process, Said Old Hand in Educational Research

Professor Emeritus of Education at Stockholm University, Prof. Torsten Husen, spoke on 'Recurrent Education and Lifelong Learning — Reflections of an Old Educational Researcher' on 8th June at the University. The lecture was part of the Lee Hysan Lecture Series in Education.

In his lecture, Prof. Husen, former director of the Institute of International Education, shared his experience in lifelong education with the audience and explained how an educational institution has to instill in its students the awareness that the intellectual fare they receive will not last them for the rest of their lives; in short, they must be made to feel that education is a lifelong process. He pointed out also that it is necessary for educational institutions to impart a zeal for learning and a flexibility of mind.

## Asian-American Psychologist Reviews Interventions for Leading Medical Disorders

In a public lecture delivered on 20th June by Prof. Richard M. Suinn, emeritus professor of psychology at Colorado State University, the outcomes of psychological interventions in primary health care for heart disease, cancer, and arthritis pain were reviewed. Specific techniques of intervention were also described.

Prof. Suinn was president of the American Psychological Association in 1999 — the first Asian-American to be elected in the association's 107 years. He was also the first Asian-American to be elected as the president of the Association for the Advancement of Behaviour Therapy, and to become mayor of the city of Ft. Collins in Colorado, head of the Psychology Department of Colorado State University, and team psychologist for four US Olympic teams.

## New Centre for Elderly with Dementia



Mr. Alan Li (left), chairman of the Board of Stewards of the Hong Kong Jockey Club, at the opening ceremony with Prof. Arthur K.C. Li

The Jockey Club Centre for Positive Ageing was officially opened on 24th June. The centre is operated by the University and funded by the Hong Kong Jockey Club Charities Trust.

The first of its kind in southeast Asia to combine day-care, short-term residential service, training, and research on dementia, the centre is housed in a four-storey building, located within Shatin Hospital compounds and equipped with a garden. It has been specially designed to provide high quality and comprehensive community-based care for elderly persons with dementia. Top level professional care is provided by the team of specialists stationed at the centre.

## MORE CARE FOR CHILDREN OF DIVORCING PARENTS

The divorce rate in Hong Kong has shot up in an alarming manner over the past decade.

Currently divorce studies concentrate mainly on the physical and mental health, financial hardship, legal problems, and childcare difficulties of divorcing couples. Investigations on the impact of divorce on the children are rare.

Prof. Miranda Cheung of the Department of Social Work conducted a large-scale survey using self-rating questionnaires to examine, from a child's perspective, the impact of parents' marital well-being on their children's psychosocial well-being. The academic performance, self-esteem, depression level, familial and peer relations, and parents' marital relationship of over 3,000 school students aged between 11 and 18 were measured in this study entitled 'The Influences of Parents' Marital Relationship on the Emotions, Behaviour, and Academic Achievement of Secondary School Students'.

Results of the survey showed that



Prof. Miranda Cheung (right) at a press conference to announce survey results

marital relationship between the parents has adverse effects on the familial relations and emotions of these adolescents but little influence over school performance. Many suffer from depression, low self-esteem, and poor social relations, and are in need of timely intervention during the family crisis. The study calls for the concerted efforts of social workers, teachers, and parents in creating a loving, caring, and supportive social environment for the children of divorcing parents, and in cultivating in them a positive life philosophy.

## From CMMRC to ICM

### Consolidating Chinese Medicine Research Activities

The University has been a pioneer in research relating to Chinese medicine in Hong Kong and boasts an internationally recognized record. Since the establishment of the Chinese Medicinal Material Research Centre (CMMRC) in the 1970s, the University has been active in Chinese medicine research, conducting scientific investigations, and providing consultation and educational services to medical practitioners, industry, and government agencies.

In January 2000, the University, to consolidate research activities related to Chinese medicine, established the Institute of Chinese Medicine (ICM), drawing on the existing strength of over 60 active Chinese medicine researchers from the Faculties of Medicine, Science, and Engineering.

The transition of CMMRC to ICM was formally completed on 31st July 2000. All CMMRC programmes have since been taken up by the relevant sections under ICM, which is located on the second and third floors of the Science Centre East Block, and houses a museum, a library, a conference room, laboratories, and research facilities. It has also rented two laboratories in the Hong Kong Institute of Biotechnology (HKIB) and is collaborating with the HKIB on projects of common interest.

The mission of ICM is to establish evidence-based Chinese medicine with a view to facilitating cooperation between

Chinese and modern medicines, and bringing research and modernized practices of Chinese medicine to the international front.



Other than the tasks of authentication, quality control, safety assurance, and database development, ICM also actively engages in clinical trials, drug development, and public education.

ICM has secured donations to the tune of HK\$10 million for setting up a Clinical Trials Centre in the Prince of Wales Hospital last July to offer manpower and funding support for clinical trials on Chinese medicine. It also collaborates with Kwong Wah Hospital in carrying out clinical trial research projects.

The School of Pharmacy is a close partner of ICM. The school's drug development centre, to be established with a grant from the Innovation and Technology Fund (ITF), will eventually be housed in the ICM laboratories.

The four colleges and the Estates Management Office have also been offering their support to ICM. Herbal plants on campus are being identified and labelled with brief introductions, while herbal corners under different themes are being planned by the colleges.

ICM has been working closely with the drug and herbal industries. As of today, four successful ITF projects have attracted research funds of about \$22 million from industrial partners and

the government. Four other ITF applications related to Chinese medicine research are being processed.

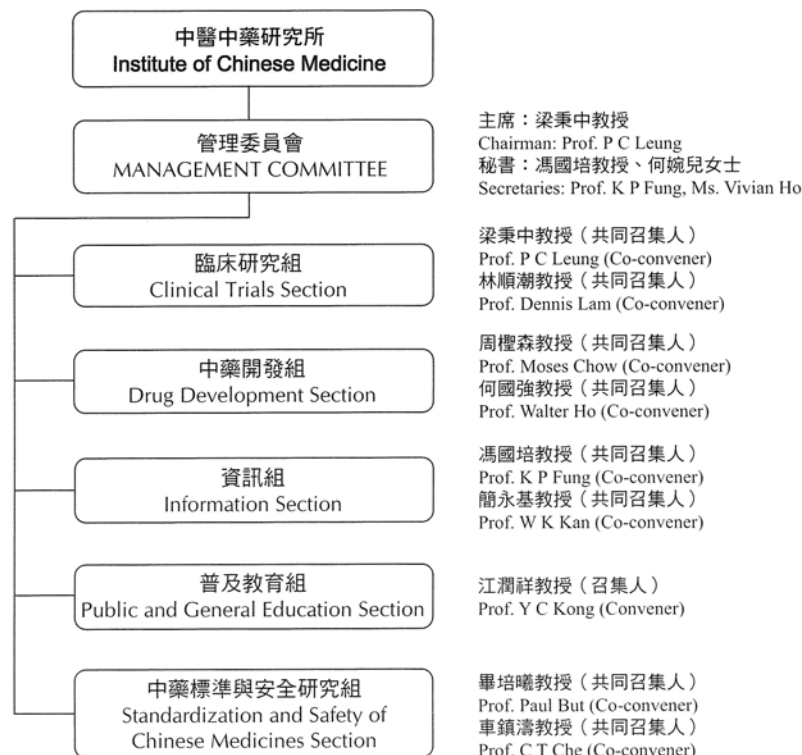
More information about ICM and Chinese medicine research is available at the ICM website (<http://www.icm.cuhk.edu.hk>).



The ICM museum

### 中醫中藥研究所組織圖

#### Structure of the Institute of Chinese Medicine





## Spatial Data Analysis Under Probe

Leading practitioners and academics specializing in the development and application of neural and evolutionary computations from the US, UK, Italy, Austria, Germany, mainland China, and Hong Kong gathered on CUHK campus last June to attend The Croucher Advanced Study Institute (ASI) on Neural and Evolutionary Computations for Spatial Data Analysis. Scholars and researchers from mainland China, Japan, and Taiwan in the fields of geography, economics, regional science, engineering, and mathematics also participated in the lectures and discussions.

The event was organized by the Department of Geography from 12th to



Prof. Leung Yee, chair of the Department of Geography (right 3) and some of the participants

17th June under the sponsorship of The Croucher Foundation.

The objective of the ASI was to scrutinize state-of-the-art neural and evolutionary computations in spatial data analysis, and to devise a plan for the dissemination of ideas and for further research in this fast evolving field.

## Microbiology Summer Course for Mainland Fellows



Prof. Augustine Cheng (front row, left 3), chairman of the Department of Microbiology, with staff of the department and participants of the summer course

Young fellows specializing in microbiology from different institutions and hospitals in mainland China were selected to participate in the Summer Course 2000 in Microbiology, organized by the Department of Microbiology from 8th to 20th June 2000 at the Prince of

Wales Hospital. The course not only provided a chance for the participants to update their laboratory skills and techniques, but also consolidated research collaboration between the University and institutions on the mainland.

## CUHK Project Enhances Multimedia Services on the Internet

With the rapid development of broadband Internet access in Hong Kong and around the world, the use of multimedia resources in information delivery on websites is gaining popularity. The Department of Information Engineering recently initiated the project OPERA (An Open Platform for Multimedia Resource Exchange) to provide a more convenient and cost-effective environment for managing and delivering Internet multimedia contents.

Multimedia resources are currently available in different formats, bit-rates, and languages. This diversity poses obstacles in the management and delivery of multimedia resources in a distributed environment. OPERA is a software-based platform that can work seamlessly with the present Internet architecture. Its Multimedia Name

Server allows Internet Service Providers (ISPs) to easily manage the retrieval and storage of multimedia resources in different video servers according to user preference, server loading, and server location. Its Content Management System facilitates web maintenance by eliminating the need for web designers to deal with the actual locations of their multimedia contents. For Internet users, OPERA's Universal Multimedia Resource Locator replaces existing multiple URLs and automatically redirects the request to the user's desired resource type.

To transfer OPERA technologies to the local industry, a consortium of ISPs and Internet Content Providers has been formed. Existing members include several ISPs, portal sites, and non-profit-making organizations such as the Hong Kong Arts Centre and the Hong Kong Space Museum.

## Student Visitors from Mainland and Taiwan



Students from Beijing Normal University and National Taiwan University visited the University from 17th to 26th July under the Hong Kong-Mainland-Taiwan University Student Visitation Programme organized by New Asia College.

The highlight of their visit was taking part in the symposium 'Education

Development of China in the 21st Century'. The participants also attended various discussions and academic talks related to the theme, and visited educational institutions in the territory, including the Hong Kong Institute of Education, the Hong Kong University of Science and Technology, and the Open University.

## Japanese Study Tour for BBA Students

Sixteen BBA students went on a study tour to Tokyo from 15th to 25th May. The tour was part of the efforts of the Faculty of Business Administration to boost the awareness of undergraduates of the global nature of business.

During the period, the students paid visits to 11 sizable Japanese companies, including Mitsubishi Electric Corporation, Jusco Co. Ltd., Japan Airlines, and Epson, where they were warmly received. The visits enabled them to gain a deeper



A group photo outside Epson

insight into Japanese management, and to learn more about the differences between doing business in Japan and in Hong Kong.

## Best Protocol Presentation Award



Students of the Postgraduate Programme in Epidemiology and Biostatistics had been asked to develop protocols for various health issues such as amblyopia, treatment of urinary stress incontinence, and falls in the elderly.

Students who produced the three best protocols received awards from Prof. S.H. Lee (right), director of the School of Public Health on 20th June at the Prince of Wales Hospital. The best award went to Ms Cheung Yan Yan (middle) and Ms Fan Shu Ping (left).

## 新任講座教授

### Professorial Appointments

#### 建築學講座教授

#### Professor of Architecture

大學委任Prof. Essy Baniassad為建築學講座教授，任期由二零零零年八月十四日起生效。

Prof. Baniassad一九六二年取得美國伊利諾大學建築學士學位，其後到英國曼徹斯特大學進修，分別於一九六七及七八年取得文科碩士和哲學博士學位。

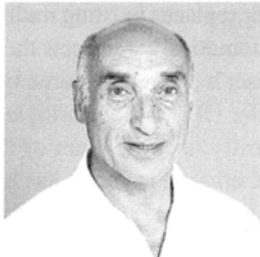
他在建築設計、教育和研究有豐富經驗，加入本校服務前為加拿大Dalhousie大學建築學院教授。

Prof. Baniassad為多個專業團體之成員，包括加拿大新斯科舍省建築師公會和美國建築師學會，現任加拿大皇家建築學院院士會監督。

Prof. Essy Baniassad was appointed professor of architecture on 14th August 2000.

Prof. Baniassad obtained his B.Arch. from the University of Illinois, Urbana, in 1962, and his MA and Ph.D. from the University of Manchester in 1967 and 1978 respectively. He was lecturer in architecture at the University of Manchester from 1968 to 1979, associate professor at the Technical University of Nova Scotia from 1979 to 1981, and professor and dean of the Faculty of Architecture at Dalhousie University from 1981 to 1994. Prior to joining The Chinese University, he was professor in the Faculty of Architecture of Dalhousie University.

Prof. Baniassad is also chancellor of the College of Fellows, Royal Architectural Institute of Canada, a practising member of the Nova Scotia Association of Architects, and an honorary fellow of the American Institute of Architects.



#### 統計學講座教授

#### Professor of Statistics

大學委任陳毅恒教授為統計學講座教授，任期由二零零零年八月十四日起生效。

陳教授為中大校友，一九八一年取得理學士學位，其後負笈美國，一九八五年獲馬里蘭大學頒授哲學博士學位。

陳教授一九八五年受聘於印第安納大學數學系，五年後轉職卡內基梅隆大學統計學系，一九九七年升任教授。他曾於一九九三至九五年在香港科技大學講學。

陳教授為多份學術期刊的副編輯，並為國際統計學會、數學統計學會和美國統計學會等成員。他的主要研究興趣為時間序列分析。

Prof. Chan Ngai-hang was appointed professor of statistics on 14th August 2000.

Prof. Chan obtained his B.Sc. from The Chinese University of Hong Kong in 1981 and his Ph.D. from the University of Maryland — College Park in 1985. From 1985 to 1995, he taught mathematics at Indiana University, and later at Carnegie Mellon University and the Hong Kong University of Science and Technology. Prior to joining The Chinese University, he was professor in the Statistics Department of Carnegie Mellon University.

Prof. Chan is an associate editor of *Econometric Theory*, *Journal of Forecasting*, and *Communications in Statistics*. His main research interest is time series analysis, in particular statistical inference for spatial-temporal dependent data.



## 通識教育部改名

### University General Education

通識教育部已由二零零零年八月一日改名為「大學通識教育部」，其主管職稱亦改為「大學通識教育主任」。

The AAPC has approved, with effect from 1st August 2000, that the Office of General Education be renamed the Office of University General Education and the title of its director be changed to the Director of University General Education.

## 學生工讀計劃

### Student Campus Work Scheme 2000-2001

二零零零至二零零一年度學生工讀計劃基金現已接受申請。該計劃讓需要經濟援助的學生，利用課餘時間協助教職員進行研究或處理其他工作，獲取報酬（本科生和研究生時薪皆為五十港元）。

工作性質規定為（一）協助大學教員從事研究工作，（二）協助各行政單位在繁忙期間的工作，或（三）其他獲工讀計劃委員會批准之工作。

大學同人可向學生事務處索取申請表格，填妥後寄回范克廉樓一樓學生事務處學生工讀計劃委員會秘書，截止申請日期為二零零零年十月四日。

學生每星期的工作時間不得超過十八小時，所有撥款只可用作支付本校工讀生薪酬，並須於二零零零年九月三十日前全數支付。獲資助之教職員須於二零零零年十月卅一日前擬就報告，經學生事務處學生工讀計劃委員會秘書轉呈有關捐助機構。

Applications for grants under the Student Campus Work Scheme are now invited from members of the academic and administrative staff. The aim of the scheme is to help needy students by providing opportunities for paid campus work, in the form of assistance to University academics/administrators. They may assist academic staff in

## 宣布事項

## ANNOUNCEMENTS

their research projects, or assist administrative staff in projects which require a large task-force on a short-term basis, or be assigned any other job approved by the Committee on Student Campus Work Scheme. An hourly rate of HK\$50 will be paid for such work for both undergraduate and postgraduate students.

Staff members who are interested in applying should return the completed application forms to the Secretary, Committee on Student Campus Work Scheme,

c/o Office of Student Affairs at 1/F, Benjamin Franklin Centre, no later than 4th October 2000.

Applicants should note that approved funds should only be used as remuneration for students of The Chinese University of Hong Kong, students should not be allowed to work for more than 18 hours in any one week, the funds should be expended in full before 30th September 2001, and supervisors of approved projects are requested to forward a report to the Secretary, Committee on Student Campus Work Scheme, c/o Office of Student Affairs by 31st October 2001, for onward transmission to the donors.

## 公積金計劃投資成績

### Investment Returns of Staff Superannuation Schemes

財務處公布公積金計劃內各項投資基金於二零零零年七月之回報如下：

From the Bursary

The investment returns of July 2000 in the Designated Investment Funds of the 1995 Scheme and 1983 Scheme are as follows:

二零零零年七月 July 2000

基金	Fund	計劃 Scheme		指標回報 Benchmark Return
		1995	1983	
(未經審核數據 unaudited)				
增長	Growth	-1.88%	-1.54%	-1.74%
平衡	Balanced	-2.01%	-2.08%	-1.98%
穩定	Stable	-1.07%	-1.37%	-1.24%
港元銀行存款	HKD Bank Deposit	0.54%	0.54%	0.44%
		(年息Annualized 6.34%)	(年息Annualized 6.36%)	(年息Annualized 5.14%)
美元銀行存款	USD Bank Deposit	0.59%	0.59%	0.49%
		(年息Annualized 6.40%)	(年息Annualized 6.42%)	(年息Annualized 5.73%)

## 公積金計劃獲法例豁免

### Superannuation Schemes Exempted

校方根據法例為香港中文大學教職員公積金 1983 計劃、1995 計劃及「丙」類服務條例僱員終期額外酬金計劃向強積金計劃管理局申請豁免。強積金管理局於二零零零年七月批准申請並發出豁免證明書。各計劃成員可到財務處或人事處之網頁參閱證書內容。查詢請致電公積金組（內線七二五一）。

The Chinese University of Hong Kong Staff Superannuation Scheme 1983, Scheme 1995, and Terms of Service (C) Terminal Gratuity Scheme have obtained approval from the Mandatory Provident Fund (MPF) Authority to become MPF exempted ORSO Schemes. Exemption certificates of the respective schemes were issued in July 2000.

Members can view the certificates by visiting the homepage of the Bursary or the Personnel Office at the University website (<http://www.cuhk.edu.hk>).

Please contact the Superannuation Unit at Ext. 7251 for enquiries.

## 二零零一至二零零二年度教職員進修資助計劃

### Staff Development Grants/Programmes 2001-2002

二零零一至二零零二年度可供申請之教職員進修資助計劃如下：

- (一) 英聯邦大學協會發展獎學金
- (二) 日本聖公會威廉斯會督紀念基金「訪問研究員/培訓學員」計劃<sup>#</sup>
- (三) 共濟會研究東亞學科基金
- (四) 日本國際交流基金會研究資助計劃
- (五) 圖書管理員日本語研習資助計劃
- (六) 研究員日本語研習資助計劃
- (七) 關祖堯教職員發展基金\*
- (八) 利希慎教職員發展基金\*

上列資助計劃之詳情，已於九月初送呈各學院院長、系主任及部門主管，以供教職員參考。有意申請者，請與所屬部門負責人聯絡。查詢可電人事處（內線七一或七二八八）。

<sup>#</sup> 該計劃截止申請日期為二零零零年十月卅一日，資助詳情見《中大通訊》二零零零年八月之暑期特刊。

\* 該基金現已接受申請，截止日期為二零零零年十月十四日。

The following staff development grants/programmes are available for the academic year 2001-2:

1. ACU Development Fellowships
2. Bishop Williams Memorial Fund (NSKK) Visiting Researcher/Trainee Programme<sup>#</sup>
3. The Freemasons' Fund for East Asian Studies
4. The Japan Foundation Fellowship Programme
5. Japanese-Language Programme for Librarians
6. Japanese-Language Programme for Researchers
7. C.Y. Kwan Endowment Fund for Staff Development\*



### 8. Lee Hysan Foundation Endowment Fund for Staff Development\*

Staff members interested in applying for the above grants/programmes may consult their departments/unit heads or faculty deans, who should have received detailed information on these programmes. Further enquiries may be directed to the Personnel Office (Ext. 7191 or 7288).

# Details were published in the *CUHK Newsletter Summer Supplement* (19th August 2000); application deadline is 31st October 2000.

\* Now open for application (internal deadline: 14th October 2000)

### 教學人員評審事宜及教職員進修資助申請/提名

#### Annual Academic Staff Review and Staff Development Grants Applications/Nominations

大學現接受二零零一至二零零二年度教學人員之晉升、職稱評審、屆退休年齡後延任，以及教職員進修資助之申請/提名，截止日期如下：

審議事宜	截止申請/提名日期	遞交申請/提名或查詢
教學人員晉升 (導師職級或以上)	二零零零年 九月三十日	有關提名或申請須於截止日期前送交人事處助理處長阮健聰先生(大學行政樓南座三樓人事處)。
教師職稱評審	二零零零年 九月三十日	查詢請電內線七二八五或七二八零。
教學人員屆退休年齡後延任 (導師職級或以上)	二零零零年 十月十四日	
教職員與導師進修資助	二零零零年 十月十四日	各項進修資助計劃詳見本期《中大通訊》。 查詢請電內線七二八八或七一九一。

同人可向學系或部門辦公室索閱由人事處發出之通告，或瀏覽人事處網頁(<http://www.cuhk.edu.hk/personnel/>)。

至於「甲」、「乙」及「丙」類服務條例非教學人員之評審事宜，容後公布。

The annual academic staff review exercise for the academic year 2001-2 will soon begin and the following are deadlines for applications/nominations:

Nature of applications/nominations	Deadline	Submissions to be forwarded to/Enquiries
Promotion (full-time teaching staff of Instructor grade and above)	30th Sept 2000	Mr. K.C. Yuen, Assistant Director of Personnel, 2nd Floor, South Wing, University Administration Building.
Review for award of academic titles (serving teachers)	30th Sept 2000	Please direct enquiries to Ext. 7285/7280.
Extension of service beyond retirement date (full-time teaching staff of Instructor grade and above)	14th Oct 2000	
Staff development grants/programmes (full-time teaching staff, and non-teaching staff on Terms of Service (A) or equivalent contracts)	14th Oct 2000	Details of the Staff Development Grants/Programmes are announced in the same issue of the <i>CUHK Newsletter</i> . Please direct enquiries to Ext. 7288/7191.

Details concerning the above are outlined in a general circular issued by the Personnel Office for dissemination to members of the teaching staff via department chairmen/unit heads. The circular and application forms are also obtainable from the website of the Personnel Office (<http://www.cuhk.edu.hk/personnel/>).

The schedule for staff review matters of non-teaching staff on Terms of Service (A), (B), and (C) will be announced in due course.

### 文物館展覽中國玻璃

#### Forthcoming Exhibitions at the Art Museum

文物館將於本月十五日及十一月五日在該館西翼展覽廳舉辦「虹影瑤輝——李景勳藏清代玻璃」展覽，展出約一百五十件清代玻璃、複色玻璃、套色刻花、畫琺瑯、描金泥金等玻璃器；器形多樣，色彩豐富，展現清宮廷造辦處玻璃廠的精湛工藝水平，以及初清西方傳教士的影響。部分展品屬民間作坊產品或外銷商品。

文物館東翼展覽廳同期展出「五色琉璃——關氏所藏中國古代玻璃」，由東周至明代的玻璃二百多項，包括用作個人飾物的玻璃珠、髮簪、手鐲等，以及日用器皿及陪葬品。預展於九月十四日下午四時半舉行。歡迎參觀。

Two exhibitions on Chinese glass will be on display simultaneously at the Art Museum from 15th September to 5th November 2000. There will be a preview of the exhibitions at 4.30 p.m. on 14th September.

The first exhibition, 'Elegance and Radiance — Grandeur in Qing Glass: the Andrew K.F. Lee Collection', will have on display in the West-wing Gallery approximately 150 pieces of glass work in a variety of form, colour, and workmanship produced in the Qing dynasty (1644-1911). These include monochromes, polychromes,



overlays, enamel-painted, gilded, and carved pieces. Some early pieces show the influence of the Western missionaries; most demonstrate the high lapidary quality of the glass products of the imperial workshops; others were produced in provincial workshops or for export markets.

The second exhibition, 'Early Chinese Glass from the Kwan Collection', will have on display in the East-wing Gallery ancient Chinese glass from the Eastern Zhou period (770-220 BC) to the Ming dynasty (AD1368-1644). Most of the over 200 exhibits are personal ornaments such as beads, hairpins, and bracelets. There are also vessels for daily use and burial objects.

### 圖書館中秋節開放時間

#### Library Opening Hours During Mid-Autumn Festival

大學圖書館暨各分館於中秋節(九月十二日)提前於下午五時閉館，並於翌日之公眾假期休館；九月十四日回復正常開放時間。

The University Library and its branch libraries will close early at 5.00 p.m. on 12th September for the Mid-Autumn Festival. All libraries will be closed on 13th September, and will resume normal opening hours on 14th September.

### 中大健身室重新開放

#### Re-opening of the University Fitness Room

位於夏鼎基運動場側的全新中大健身室(離舊址左面五十米)將於九月四日重新開放。開放時間為：星期一至五上午七時至下午八時半，星期六上午九時至中午十二時。星期日及公眾假期停止開放。

歡迎持有有效的中大健身室使用證者使用。查詢請聯絡體育部陳德有先生(二六零九七五三九)。

The new University Fitness Room, situated 50 metres to the left of the previous one, and right outside the racetrack of the Haddon-Cave Sports Field, will be re-opened from 4th September 2000. People with valid University Training Room User's Cards are welcome to use the facilities between 7.00 a.m. and 8.30 p.m. Monday through Friday, and between 9.00 a.m. and 12.00 noon on Saturday.

Please direct enquiries to Mr. Chan Tak-yau at 2609 7539.

### 大學游泳池通告

#### University Swimming Pool

大學游泳池於九月四日至十一月三十日之開放時間為：

第一節：上午十時三十分至下午一時四十分

第二節：下午二時三十分至六時十五分

星期日及公眾假期照常開放

游泳池按價例於中秋節(九月十二日)提前於下午五時關閉。

游泳池第一及第二水線於九至十一月逢週一及週三(九月十三日及十月二日除外)下午三時至五時三十分，專供體育運動科學系作「教育學士學位課程」之用。

From 4th September to 30th November 2000, the opening hours of the University swimming pool will be as follows:

1st session: 10.30 a.m. to 1.40 p.m.

2nd session: 2.30 p.m. to 6.15 p.m.

(The pool is open seven days a week including public holidays.)

The pool will be closed earlier at 5.00 p.m. on Tuesday, 12th September 2000, for the Mid-Autumn Festival.

The first and second lanes of the pool will be reserved for use by the full-time Bachelor of Education Programme of the Department of Sports Science and Physical Education from 3.00 p.m. to 5.30 p.m. on all Mondays in September, October and November, except 2nd October, as well as all Wednesdays in September, October, and November, except 13th September.

### 額外門診服務計劃

#### Extra Outpatient Consultation Services Scheme

由二零零零年八月廿一日起，參與計劃的陳洪昭醫生只在其深水埗醫務所應診。

地址：深水埗巴域街廿七號地下

電話：二七七九六八九或二五二二八二六二

傳真：二七七九九七零一

診症時間

星期一至五 上午八時半至下午十二時半；下午四至八時

星期六、日及公眾假期 上午九時至下午一時

With effect from 21st August 2000, Dr. Chan Hung-chiu will offer consultation service at his clinic in Shamshuipo only.

Address: G/F, 27 Berwick Street, Shamshuipo

Tel: 2779 9689, 2522 8262

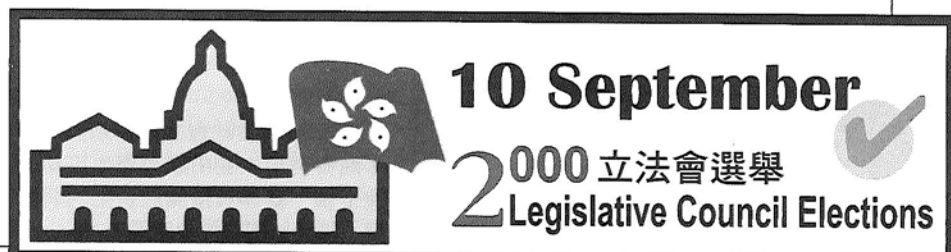
Fax: 2779 9701

Pager: 7668 2347

Consultation hours:

Monday to Friday: 8.30 a.m. to 12.30 p.m.; 4.00 p.m. to 8.00 p.m.

Saturday, Sunday, and public holidays: 9.00 a.m. to 1.00 p.m.



Information in this section can only  
be accessed with [CWEM password](#).

若要瀏覽本部分的資料，  
請須輸入[中大校園電子郵件密碼](#)。



Information in this section can only be accessed with **CWEM password**.

若要瀏覽本部分的資料，  
請須輸入**中大校園電子郵件密碼**。



**香港亞太研究所 HKIAPS**

大學服務中心論文系列第十五號  
《中蘇同盟的經濟背景：1948-1953》

中蘇同盟的建立、變動及其結果，是現代社會主義歷史及冷戰國際歷史中最值得關注的事件。作者沈志華利用中蘇雙方的檔案文獻及相關口述史料，對中蘇同盟的形成及建立初期的經濟背景進行歷史考察，主要討論範疇為：

- 一、新中國成立前夕中蘇的經濟聯繫，毛澤東與斯大林在決定結成政治和軍事同盟之時，對各自經濟利益的考慮和要求；
  - 二、在簽訂中蘇同盟條約的外交談判過程中，毛澤東與斯大林在涉及雙方經濟利益的實質問題上所產生的矛盾、爭論及最終結果；
  - 三、在新中國建立之初的困難條件下，特別是處於朝鮮戰爭的特殊環境中，蘇聯對華經濟援助的形式和內容，及其對中國經濟建設的作用和影響。
- 國際統一書號962-441-715-6，平裝本，一百二十七頁，三十港元。



Occasional Paper No. 111

**Education and Principle-based Opinion: A Study of the Right of Abode Controversy in Hong Kong**

Education is one of the fundamental variables shaping people's political opinions. Past studies in the West have shown that education increases people's support for abstract democratic principles, but not necessarily for concrete policies implementing these principles. Written by Joseph Man Chan, Kenneth K.L. Chau, and Francis L.F. Lee, this paper examines the impact of education on opinion formation in Hong Kong. Do people with different educational levels hold different opinions regarding abstract social principles? How does support for principles and the calculation of concrete self-interest affect opinion on policies? The right of abode controversy in 1999 provides a test case for these questions. Drawing on two surveys, the authors have found that tertiary education had an enlightening effect on people's support for and application of social principles, especially during the early stages of the controversy. Tertiary education is also observed to be negatively related to people's concern for social interest.

ISBN 962-441-111-5, paperback, 56 pages, HK\$30.

**中大通訊 CUHK NEWSLETTER**

網址 website <http://www.cuhk.edu.hk/puo/>

1. 本刊逢四日及十九日出版。
2. 來函或投稿請寄沙田香港中文大學秘書處出版事務處《中大通訊》編輯部(電話2609 8584, 傳真2603 6864, 電郵pub2@uab.msmail.cuhk.edu.hk)。
3. 投稿者須附真實姓名、地址及聯絡電話, 文章則可用筆名發表。
4. 編輯有權刪改及決定是否刊登來稿, 不欲稿件被刪者請預先聲明。
5. 本刊所載文章只反映作者之觀點和意見, 並不代表校方或本刊立場。
6. 所有內容未經編者書面准許, 不得轉載。
7. 本刊每期發行三千八百份, 免費供校內教職員索閱, 部分郵寄本地教育機構及與大學有關人士。私人索閱, 請致函本刊查詢。

1. The *Newsletter* is published on the 4th and 19th of each month.
2. All contributions and suggestions should be sent to the Editor, *CUHK Newsletter*, Publication Office, University Secretariat, The Chinese University of Hong Kong (tel. 2609 8584; fax. 2603 6864; e-mail pub2@uab.msmail.cuhk.edu.hk).
3. Contributions should bear the writer's name and contact telephone number, and may be published under pseudonyms. No anonymous letters will be published.
4. The Editor reserves the right to reject contributions and to edit all articles without notice for reasons of clarity, length, or grammar. Those who do not want to have their articles amended should indicate clearly in writing.
5. The views expressed in the *CUHK Newsletter* are those of the authors, and are not necessarily those of the University or the Editor.
6. No part of this newsletter may be reproduced without the written consent of the Editor.
7. This publication has a circulation of 3,800 and is primarily intended for staff members of CUHK. Copies are also sent to local educational institutions and individuals associated with the University. Those who wish to be included on the mailing list please contact the *Newsletter* direct.

**截稿日期**

**Deadlines for Contributions**

期數 Issue no.	出版日期 Issue date	截稿日期 Deadline for contributions
169	19.9.2000	1.9.2000
170	4.10.2000	18.9.2000
171	19.10.2000	29.9.2000
172	4.11.2000	19.10.2000
173	19.11.2000	2.11.2000
174	4.12.2000	17.11.2000
175	19.12.2000	4.12.2000



## 七名中大生獲頒原創論文獎



七名中大本科生在「校際原創論文比賽」中獲獎，表現卓越。語文教育課程李佩珈及中文系朱婉玲奪得冠軍，工商管理學課程歐陽嘉敏及物理系何劍暉為亞軍得主；而專業會計學鄧澤雄及市場學系梁漪鈴，以及社會科學院李玉麒則獲優異獎。各人除獲頒獎學金，冠、亞軍組合更分別贏得在《信報》和AOL暑期實習的機會。

賽事由《信報》主辦、AOL香港贊助，目的是鼓勵大專院校學生在面對廿一世紀新經濟的挑戰時，能發揮掌握和分析資訊的能力，建立創意思維。

## 改進教師的普通話

本校普通話教育研究及發展中心獲語文教育及研究常務委員會委託，為中、小學普通話教師舉辦普通話暑期沉浸課程，以提高他們的普通話水平。

課程由國家語言文字工作委員會普通話培訓測試中心協辦。學員於七月十七日至八月十一日逗留北京期間，全方位浸淫在普通話的語言環境裡；四十三人參加國家語委普通話水平測試，成績理想，其中廿三人考獲二級，將可豁免普通話科教師語文基準試卷三（口試）。



## 擴闊中小學生知識面

中大不少單位在暑假期間舉辦各種活動，協助中小學生擴闊知識面。

### 第四屆語文及通識夏令班

由校方主辦的語文及通識夏令班於七月十七至廿二日舉行，參加人數達二百，為歷年之冠。

該課程旨在讓預科生親身體驗本校的優良教學特色。結業禮由李國章校長主持。



暑期資優課程

### 暑期資優課程

大學與學校夥伴協作中心之資優計劃，於八月六至十二日為初中資優學生提供富挑戰性的課程，擴闊他們的視野，增強他們的思考能力，發掘及培養他們的創造力和領導才能。

「暑期資優課程2000」共取錄七十一名經中學校長推薦的資優學生，另邀請八名來自長春東北師範大學附屬中學的資優學生參與。

### 啟動課程

大學與學校夥伴協作中心開展名為「透過啟動課程促進新來港學童融入香港主流學校的發展及研究計劃」，協助一百名新來港學童適應香港教育。

課程於七月五日舉行結業禮。該研究計劃由李子健教授和孔繁盛教授主持。

### 科學鐵人盃

理學院於七月十四日舉行第二屆「科學鐵人盃」，由八十一名中六學生競逐。結果由聖方濟書院汪洋奪冠，亞季軍分別為拔萃男書院鄭健坤和東華三院盧幹庭紀念中學梁杏桃。

該項馬拉松式科學常識競技賽，將前沿的科學發展融入遊戲中，比賽項目涵蓋各主要的科學領域如數、理、生、化、統計、食品及營養科學、環境科學及中醫藥等，參賽者要經過十一個回合的鬥智角力，才能膺科學鐵人。

### 互動領袖訓練營

一百五十名中五至中七的學生七月底在中大校園參加「想創你未來：傑出青年自我大激賞」訓練營，以積極裝備自己，發掘自己的領導潛能，面對社會各種轉變。

該活動由社會工作學系與半島青年商會合辦；並由該系學生協助設計及帶領，讓學員接觸社會上的弱勢社群，培養他們的社會意識。



## 二百名兩岸大學精英接受培訓



由本校學生事務處及崇基學院與九龍總商會合辦的第二屆「新紀元行政管理精英培訓計劃」於七月十七至廿九日舉行，除獲九龍總商會大力支持及贊助外，並得到國家教育部和駐香港特別行政區聯絡辦公室的全力支持。

參與計劃的大學精英來自香港中文大學和內地著名院校，今年更首次邀請台灣大學及台灣師範大學的學生參加，以增強跨文化的交流，開拓更廣闊的中華精英人才網絡。

約二百名兩岸三地大學生透過不同活動，探討香港賴以成功的各種元素，包括法治、資訊、科技、基本建設、銀行業、金融和國際管理模式。

開幕禮於逸夫書院大講堂舉行，由財政司司長曾蔭權博士、中大署理校長金耀基教授、九龍總商會理事長湯國華先生、中央駐香港特別行政區聯絡辦公室教育科技部副部長蔡培遠先生、交流團領隊國家教育部社會科學研究及思想政治工作司遲剛毅先生等主持。

## 第二屆宋淇翻譯論文獎

由翻譯研究中心主辦的第二屆「宋淇翻譯研究論文紀念獎」，結果由三名本地學者奪得。

評審會議於七月一日在中國文化研究所舉行，評審委員包括《譯叢》訪問學人卜立德教授、台灣中山大學美國中心李達三博士、台灣大學外國語文學系彭鏡禧教授，及翻譯研究中心主任孔慧怡博士；《中國翻譯》副主編楊平女士則任觀察員。得獎人（依筆劃序）為香港城市大學朱純深、香港浸會大學張佩瑤和香港嶺南大學張南峰。

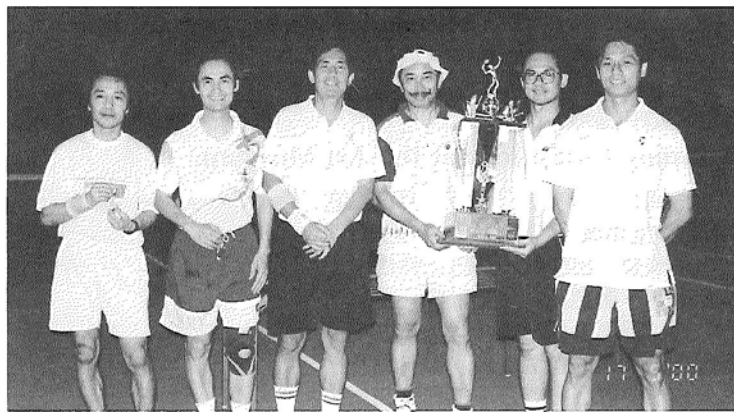
他們各得紀念獎狀及獎金三千港元。此外，天津師範大學李運興獲「評判提名獎」，並得紀念獎狀。

## 醫科生赴汕頭義診



十六名醫科四年級學生參加由中大醫學院及汕頭大學醫學院合辦的醫療扶貧體驗計劃，於暑假到潮汕貧困地區，參與義診、家訪、治療、外科手術及保健等工作。

## 教職員球賽成績揭曉



由體育部舉辦的教職員男子網球、乒乓球和壁球賽已於六月十九日結束，參賽者共六十八人，各項比賽冠、亞、季、殿軍名單如下：

網球單打：醫學院譚旭浩，體育部何國泰，新亞圖書館李潤祖，體育部盧遠昌  
網球雙打：體育部何國泰及統計學系李錫欽，新亞圖書館李潤祖及生物系周偉宣，日本研究學系李活雄及地理系梁怡，體育部鄭毓金及保健處曾偉傑  
乒乓球單打：體育部何國泰，體育部容浩然，系統工程與工程學系李端，

### 化學系吳國光

乒乓球雙打：體育部何國泰及保健處曾偉傑，體育部容浩然及陳龍強，訊息工程學系盧慶祥及張晨強，系統工程與工程學系李端及中國語言及文學系張光裕  
壁球單打：化學系謝文健，體育部陳志明，物業管理處譚必成，課程與教學學系 David Coniam

另外，體育部五月十七日舉辦蝦殼盃網球賽，由現役網球校隊對教職員聯隊，結果後者獲勝，並從頒獎嘉賓麥繼強教授手中接過冠軍獎盃（上圖）。



## 解放軍國防科工委裝備技術學院來訪

中國人民解放軍北京國防科工委裝備技術學院院長常顯奇教授率領七人代表團，於五月訪問本校，參觀了地球信息科學聯合實驗室及工程學院，就地球信息科

學及無線通訊科技深入交流，並承諾日後加強與中大的合作。

解放軍北京國防科工委裝備技術學院是內地專門研究軍事科技、航天技術、通訊系統的學院，曾參與開發中國第一艘預作載人的太空船「神舟號」。

地球信息科學聯合實驗室主任林瑋教授向代表團介紹了實驗室多項最新研究，包括(一)利用雷達遙感測量本港地表穩定性，特別是以全天候方式找出滑坡地點，從而建立滑坡模型；(二)透過高光譜和彩虹外遙感技術，進行植被調查；(三)利用虛擬現實技術進行數碼香港研究；(四)開發來電位置顯示軟件系統，可應用於消防、警隊等範疇。



解放軍北京國防科工委裝備技術學院訪問中大

## 預防胃癌新方向 全力清除幽門螺桿菌



研究在煙台開展

醫學院與北京大學醫學部(前北京醫科大學)合作的一項大型縱向胃癌研究發現，根治幽門螺桿菌感染，能有效地預防胃癌的形成。研究成果對治療胃癌的方法有深遠影響。

胃癌是全國癌病中死亡率最高的，而研究顯示，幽門螺桿菌感染與胃癌之關係最為密切，受感染者的發病率是未受感染者的六倍，這關係在較年輕的病人中尤為顯著。

中大醫學院的研究早已證明服用抗生素能清除幽門螺桿菌感染，治癒腸胃潰瘍。

該院與北大醫學部於胃癌高發區山東

省煙台市開展研究，對象為受幽門螺桿菌感染者。他們隨機分成兩組：一半人接受一星期的抗生素治療，另一半則只接受安慰劑。一年後發現，接受抗生素治療者，胃部發炎情況明顯改善；而清除了幽門螺桿菌感染後，病人的胃癌前徵如胃黏膜萎縮及腸化的惡化率放緩。

醫學院於八月十五日在沙田威爾斯親王醫院召開記者招待會，由醫學院院長鍾尚志教授、內科及藥物治療學系系主任沈祖堯教授，以及北大醫學部胃腸內科主任林三仁教授介紹研究計劃的開展及結果。該等結果已於七月美國胃腸學會《胃腸病學雜誌》上發表。

## 校外進修學院卅五周年藝術講座

校外進修學院於五至七月期間，以「藝苑薈萃在千禧」為主題，舉辦多項藝術專題公開講座，供學員及市民免費參加，以慶祝學院成立卅五周年紀念，並提高港人對中西藝術的興趣及欣賞能力。

講座分為「中國藝術」及「西方藝術」系列。「中國藝術」的講題包括「當今中國畫發展的缺失」、「中國現代繪畫概論」及「中國當代書畫藝術的發展」，嘉賓講者有學院名譽顧問金嘉倫先生、資深藝術課程導師鄭天鶴先生及李頌翔先生。至於「西方藝術」講座系列則以「藝術



論——空間」、「數學與藝術」及「香港繪畫藝術的發展空間」為題，由資深導師及著名畫家鄭家奇先生、劉中行先生及李尤猛先生主講。

## 本校獲亞洲環評貢獻大獎

本校於六月獲國際環境影響評估協會頒發「亞洲區環境評估貢獻大獎」，而環境研究中心主任林健枝教授亦同時獲該會表揚。

中大在推動環境影響評估和環境保護工作方面，一直不遺餘力，一九九零年更成立環境研究中心推動有關的科際研究，並與政府和相關團體及院校合作，紓解環境問題。

國際環境影響評估協會是全球最具規模的環評組織，成員來自一百零七個國家的環評及環保專家和業者。該會頒獎予本校是藉以表揚中大多年來在香港推動環評研究的貢獻和實質成果。

## 中西醫學結合講座

內地的中醫醫院大多為中醫藥大學或學院之附屬醫院，診療手段往往糅合中西醫的長處。而中西醫優勢互補之情況如要在香港出現，先決條件便是設計一套切合本港實際情況的結合方案。

為探索此敏感而極具學術性之課題，中醫學院於四至六月舉辦「西醫學習中醫班」，由廣州中醫藥大學各分科主任每週作專題演講，講述於臨床結合中西醫治療有特效的各種男、婦、兒科，內科，耳鼻喉科，眼科，骨科，針灸等分科常見疾病。學員百餘人，多屬資深中醫及醫生、護士長等。

「西醫學習中醫班」最後一講由中國科學院院士陳可冀教授主持，講題為「中西醫結合之原則與實踐」。陳教授為本校中醫學院客座教授，長期在國家中醫藥機構主持中西醫結合之臨床研究，稱著全國，聲名遠播。

## 香港兒童尿床研究新發現

尿床是兒童期常見的問題，一般相信是由於兒童發育未成熟，不能控制排尿所致，但會隨著兒童成長而相應消失。外科學系小兒外科部的一系列研究卻推翻了這些觀念。

研究主持楊重光教授指出，根據嬰幼兒膀胱活動及睡眠腦電波研究結果，超過一歲之幼兒已不會在熟睡中排尿。尿床另有生理因素，並引致行為及心理問題，應及早積極治療。

他們調查一萬五千名本地五至十九歲兒童及青年，發現約百分之二有尿床，而當中經常尿床者(一週尿床三次或以上)在成長後仍常尿床。此外，尿床對兒童產生長遠及嚴重的心理影響，阻礙他們的正常活動，並製造很多家庭問題，破壞家庭和諧。

過去兩年，研究人員向一百卅九名尿床兒童作了心理及行為問題評估及分析，又比較沒有尿床兒童的評估，發覺尿床兒童比正常兒童明顯有較嚴重的情緒、思想、注意力和行為等問題，而自尊心亦受到嚴重傷害。當他們痊癒之後，這些心理及行為問題都得到明顯改善。

根據晚上睡眠期間進行腦電圖(EEG)及膀胱功能測試的結果，尿床兒童可歸納

為三種異常類別：

A：日間膀胱功能正常，夜間入睡後則有明顯的膀胱肌肉不穩定收縮引致尿床，腦電圖則由熟睡變為淺睡，但沒有完全醒覺。

B1：日間的膀胱功能顯示膀胱肌肉不穩定或與括約肌不協調。晚間則有較頻密的尿床，及常有較差的睡眠素質。

B2：日間膀胱功能顯示膀胱出口阻塞和排尿壓力極高，及膀胱容量減少。

楊教授表示，尿床可重新分類為不同種類的生理問題，而專門針對不同類別尿床的個別治療成效顯著，即使是情況極嚴重及過去用其他治療方法屢醫無效的，成功率也幾近百分之一百。



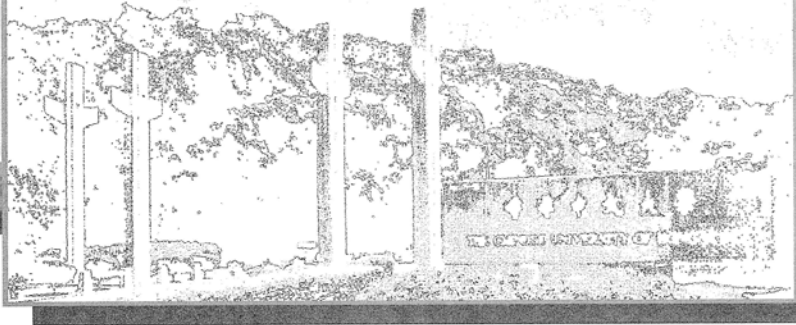
## 日語多媒體資源中心成立

校外進修學院已於其尖沙咀上課中心成立「日語多媒體資源中心」，為日語課程學員提供更全面的訓練。

開幕典禮於五月二十日舉行，由駐港日本總領事館文化領事勝又晴美女士、日本文化協會日本語講座校長鈴木東先生、中大副校長廖柏偉教授及日本研究學系系主任李活雄教授剪綵。

學院經駐港日本總領事館文化部協助，獲「日本萬國博覽紀念基金」贊助成立該中心，致使校外進修學院得以增加有關日語電腦輸入法的訓練課程，並發展更多日語電腦或互聯網的課程。





## 中醫中藥研究所全面開展教研工作



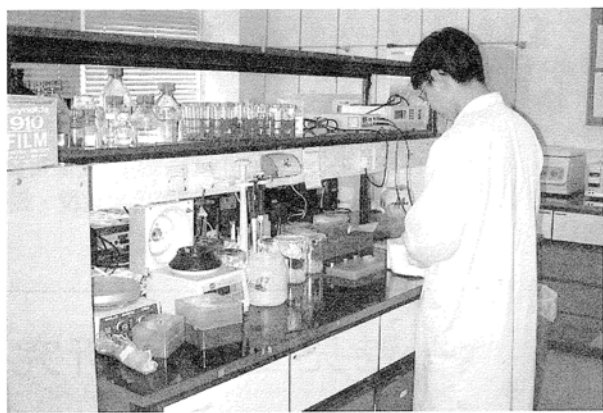
校方今年一月重整校內從事中醫藥研究的組織，集合醫學院、理學院和工程學院六十多名教研人員，成立了中醫中藥研究所，進一步鞏固及強化有關的科研工作，以配合香港中醫中藥近年的發展。

中醫中藥研究所的宗旨是利用「實證為據」的科學方法推動中醫中藥研究，以促進中西醫藥交流，確立中醫中藥的國際地位，及承傳推廣中醫藥文化的使命。

研究所位於中藥研究中心原址，即科學館東座二樓及三樓，設有中藥博物館、圖書館、會議室、實驗室及各種研究設施；另租用香港生物科技研究院的實驗室作研究用途，並與該院開展多項合作研究。由中藥研究中心過渡至中醫中藥研究所之安排已於七月卅一日完成，中心之各項工作亦分別納入研究所轄下之有關組別。（研究所組織圖請參閱英文版第二頁。）

除了中藥研究中心一直進行的中藥鑑定、檢定、品質控制、訂立安全標準及建立中醫藥電腦資料庫的工作外，研究所更積極推動臨床實驗、中藥開發和普及教育等工作，提供一條龍式的服務，謀求更全面的發展。

研究所已籌得約一千萬元捐款，並於



研究人員以分子化學方法檢測中藥成分

七月在威爾斯親王醫院設立臨床研究中心，另與廣華醫院合作，共同進行中醫臨床研究。除致力科研外，該所更與業界緊密合作，積極配合政府創新科技署的《中藥產業未來十年發展大綱》（一九九九年七月），為香港經濟發展出力。研究所四項計劃已獲創新科技基金批准，共得研究經費二千二百萬元，另四項則仍待審批。

該所又與藥劑學院緊密合作；而剛獲得創新科技署資助的藥物開發中心亦將設於中醫中藥研究所之內。

研究所為校園中草樹木加設標籤，以及在各成員書院籌建專題中藥園圃的普及教育工作，亦獲各書院及物業管理處大力支持。

欲加深了解中醫中藥研究的人士，或計劃開展中醫中藥研究的同人，請瀏覽該所網頁(<http://www.icm.cuhk.edu.hk>)，或與研究所管理委員會主席梁秉中教授、秘書馮國培教授和何婉兒女士，或各小組召集人聯絡。

## 成立創新科技中心 推動香港高科技發展

本校與依利安達國際集團有限公司七月廿七日宣布，由香港中文大學基金會（中大全資擁有機構）與「Elec & Eltek Technology Investment Limited」（依利安達國際集團有限公司全資附屬公司）合作成立「Elec & Eltek Technology Center (Holdings) Limited」，並開辦一所創新科技中心，名為「香港中文大學—依利安達科技中心」，致力拓展創新科技及投資發展有關科技所衍生的商機。

科技中心的成立典禮由香港特別行政區政府資訊科技局長尤曾家麗女士、中大李國章校長及依利安達國際集團有限公司主席兼董事總經理蘇章盛先生主持。

近年資訊科技工業發展一日千里。香

港是其中一個拓展高增值先進科技及相關服務的主要城市，合作雙方希望把香港建設成亞太區的科技樞紐。科技中心將致力提倡創新科技、發掘卓越範疇和開發輔助技術。中心更會是孕育雛形項目的溫室，以及一所為現職工程師提供前線專業訓練的持續教育中心。

工程學院院長程伯中教授認為科技中心的成立，「可開拓更多渠道讓大學的科技商品化，同時令大學吸取工業界的經驗，對大學及社會均有裨益。」

中心刻下致力投資開發多個科技項目，包括「多功能的橫向 B2B 電子商貿平台」、「功能強大的多種語言人工智能搜尋器」，以及「多種語言語音製造和辨析技術」。

## 華人物理學精英匯聚中大

本校與華人物理學會於七月卅一日至八月四日合辦第三屆「全球華人物理學大會」，三百多名來自各地的傑出物理學者聚首中大校園，包括楊振寧、李政道、丁肇中、丘成桐、朱經武、趙忠賢等。

開幕典禮主禮嘉賓為香港特別行政區政府教育統籌局局長羅范椒芬女士，其他主禮人有李國章校長、華人物理學會會長黃卓然博士、全球華人物理學大會國際籌委會主席章義朋教授及楊綱凱教授，以及本地籌委會主席賴漢明教授。

大會共舉行七個全體會議及六十節

分組報告，內容涵蓋十二個物理學的熱門領域，計有加速器物理，天文及天體物理，原子、分子、光學及化學物理，生物物理，計算物理，凝聚態實驗，凝聚態理論，高能物理，粒子及核子物理，等離子體物理，統計物理，理論物理。

其中三個全會分別用以紀念近年辭世的著名華人物理學家吳大猷、吳健雄及謝希德。

全球華人物理學大會由華人物理學會倡導，並與各地物理學界人士共同籌組，首屆於一九九五年在汕頭市舉行，第二屆於一九九七年在台北市召開。

## 繼承與創新：華人建築教育的挑戰

華人社會正面對一個以科技為用，人文為本的新紀元，建築教育如何培養既秉承中華文化精髓，又能迎合廿一世紀經濟及社會需求的建築師呢？

建築學系與全國高等學校建築學專業指導委員會，於八月十六至十八日在校園合辦「繼承與創新——華人建築教育學術研討會」，讓海內外華人建築教育工作者交流，一起探索如何培養高素質、富創新

能力的建築人才，以及建築教育的內容、方法及策略。

是次會議為內地建築教育工作者首次參與的同類國際教育學術研討會，討論課題包括建築學系與大學架構的關係，學術評審制度對建築學尤其建築設計教學的影響，建築設計學教師的素質，如何建立適合於建築學學科發展的評審制度，人文和技術課程與設計教學的一體化等。

## 中國商業史國際研討會

歷史系與香港大學亞洲研究中心於七月六至八日在大學行政樓祖堯堂合辦「第三屆中國商業史國際研討會」。柏克萊加州大學葉文心教授、東京大學濱下志志教授及天津社會科學院胡光明教授就會議主題「中國商人、商會及商業網絡」發表演講，三十多名來自兩岸三地、美國、加拿大、澳洲、日本、新加坡等地的學者在会上提交論文。

研討會共分十二節，研討範圍包括商人與商業網絡、前近代以來的中國商業信

用與交易成本、商人與商品流通及市場、近代中國企業、商人團體、商人政治與政府、商會與地方政治和社會、商會網絡與地方經濟發展、商會的現代轉變、香港商會研究等。

中大文學院院長郭少棠教授與港大副校長兼亞洲研究中心主任黃紹倫教授在開幕禮上致辭；而中大歷史系系主任蘇基朗教授則與亞洲研究中心副主任冼玉儀教授主持閉幕典禮。

## 運動生物力學國際會議



體育運動科學系於六月廿五至三十日在校園舉辦第十八屆國際運動生物力學會議，提高運動科學者對運動、體能活動以及健體活動的了解。

運動生物力學研究在過去三十年一直盛行於歐洲及北美洲，隨著亞洲運動員水平不斷提升，區內運動科學研究員、體育教師、教練及運動員亦開始利用更科學及系統化的方式研究運動，令運動員的訓練更為有效，運動素質更高。

該會議為國際運動生物力學協會首次在亞洲召開的周年會議，集合三百多名來自卅八個國家及地區的體育運動科學專家，發表二百七十五份研究報告。大會特別加插應用運動科學研討會，重點討論太極、柔道、羽毛球、田徑及游泳等運動的最新科學研究成果。