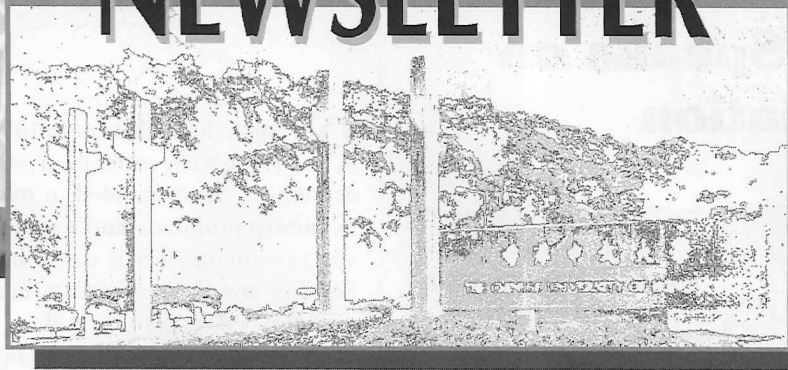


# CUHK NEWSLETTER



The Chinese University of Hong Kong

Vol. 9•12 No.130 4th September 1998

博文約禮·繼往開來



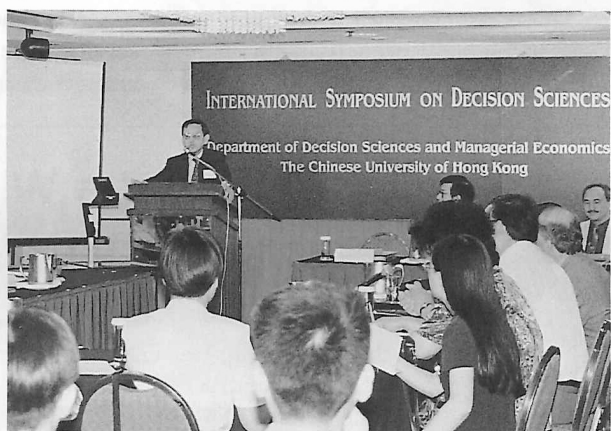
## Symposiums to Celebrate 35th Anniversary

Two international symposiums were organized in June and August respectively to celebrate the 35th anniversary of the University.

The International Symposium on Decision Sciences was organized by the Department of Decision Sciences and Managerial Economics on 13th and 14th June at the Regal Riverside Hotel in Sha Tin. Over 80 scholars from the UK, US, mainland China, Taiwan, and Hong Kong attended the function, which comprised sessions on management information systems and decision sciences. Prof. Eden Yu was convener of the programme committee.

From 2nd to 7th August, the Department of Chemistry hosted the Ninth International Symposium on Novel Aromatic Compounds (ISNA-9) at the Hong Kong Convention and Exhibition Centre. It was the first international conference held in Hong Kong that had been endorsed by the International Union of Pure and Applied Chemistry (IUPAC).

The event attracted over 250 participants and was officially opened by Prof. Arthur K.C. Li and Prof. Zhang Cunhao, president of the National Natural



Science Foundation of China. Prof. Lawrence T. Scott of Boston College, a renowned scholar in the field, delivered the first Nozoe Memorial Lecture entitled 'Geodesic Polyarenes with Exposed Concave Surfaces' on 3rd August. Plenary lectures, invited lectures, and poster sessions were also given by leading professional chemists the world over.

Aromatic compounds are compounds which, owing to particular arrangements of  $\pi$ -electrons in them, possess unusual chemical, physical, and biological properties. The spectrum of aromatic compounds today spans from high potency pharmaceuticals to hi-tech materials with special electronic, optical, and magnetic responses. Some of them can mimic the functions of enzymes in biological systems.

## CUHK and TWGHs Pool Efforts to Promote Chinese Medicine



The University signed a memorandum with the Tung Wah Group of Hospitals on 5th June to collaborate in the promotion of education, training, and research in Chinese medicine. The University will admit its first batch of 15 full-time students in Chinese Medicine in 1999. Under this memorandum, the

students will go to the Chinese Medicine Clinic of Kwong Wah Hospital for clinical attachment during the course of their study.

The memorandum also paves the way for the organization of symposia, seminars, and meetings on Chinese medicine, the development of the clinical practice of Chinese medicine, as well as the promotion of clinical research on the safe and proper administration of Chinese medicine. Scholars invited to teach on the University's Chinese Medicine Programme will be attached to the Chinese Medicine Clinic of Kwong Wah Hospital while selected Chinese medicine practitioners of TWGHs will be appointed as honorary/adjunct teachers of the programme.

## Royal Party Given a Taste of CU's Bicultural Tradition

Their Royal Highness The Duke and Duchess of Gloucester visited the University on 21st July during their first official visit to Hong Kong since 1st July 1997.

The Duke and Duchess were greeted by Prof. Arthur K.C. Li, vice-chancellor, who introduced to them Dr. Lee Hon Chiu, chairman of the University Council, Dr. the Honourable Lee Quo Wei, past chairman and Life Member of the University Council, and Profs. Ambrose King and Kenneth Young, pro-vice-chancellors. The

royal couple were given a tour of the Art Museum and the Department of Architecture. Incidentally the University was the only tertiary institution they visited in Hong Kong.



The royal couple, flanked by Prof. Arthur K.C. Li and Dr. Lee Hon Chiu, were presented a memento of their visit to the University.

The Duke of Gloucester (left), himself a qualified architect, was presented a bracket set by Prof. Tunney Lee, chairman of the Department of Architecture. The department applied computer-aided design techniques to create a three-dimensional virtual model which was then rendered in physical form by the Department of Mechanical and Automation Engineering using rapid prototype techniques. The set is one of the most distinctive features in traditional Chinese wood construction.

## CUHK Co-hosts Tufts University Leadership Institute

The University was one of four universities working collaboratively to launch the Tufts Institute for Leadership and International Perspective this summer. The first of its kind, the institute prepares students for leadership across cultures in the Asia Pacific.

On this inaugural programme, seven students from Tufts University in the US were paired with seven students from The Chinese University, the University of Hong Kong, and Peking University. The University's representatives are Computer Science and Engineering student Wong Hiu-yung and Government and Public Administration student Lee Mei-bo. For six weeks, the students worked with their mentors in the corporate community who posed real-life problems for them to solve. The problems may cover areas including human resource issues, marketing, finance, and health care. In February 1999 they will spend two weeks in Boston to present their findings and recommendations. They will spend the next several months communicating via e-mail to refine and develop their projects prior to the Boston



Closing ceremony of the programme. Wong Hiu-yung is pictured second from right and Lee Mei-bo second from left. Prof. Kenneth Young (seated third from left), pro-vice-chancellor, who made welcoming remarks is seated next to Dr. Harry Fang (seated middle) who delivered the keynote address.

symposium. During the summer programme, the students also participated in cross-cultural leadership seminars and discussed global issues.

The sponsors were Hongkong Telecom, International Management Group, Merrill Lynch, Morgan Stanley, Pacific Health Group, Saatchi & Saatchi, and Time Inc., Asia.

## Leading Environmental Microbiologist Speaks on Bioremediation



bioremediation of petroleum spills in marine environments. Bioremediation is a cost-effective means of speeding up the removal of petroleum hydrocarbon pollutants from soil and water. It has been used in the Amoco Cadiz oil spill, the Ixtoc well blowout in the Gulf of Mexico, and the Exxon Valdez oil spills.

World renowned environmental microbiologist Prof. Ronald M. Atlas (left 4) of the University of Louisville delivered the Sir Edward Youde Memorial Fund Visiting Professorship Scheme Public Lecture entitled 'Bioremediation of Petroleum Pollutants' at the University on 20th July.

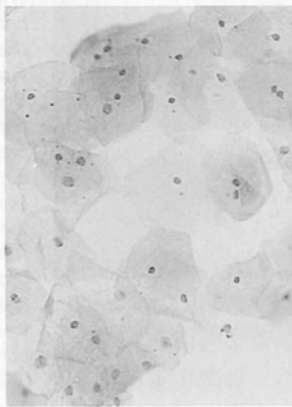
Prof. Atlas's most noteworthy work is in the field of petroleum microbiology, specifically in the microbe's function in

published in the area of environmental microbiology and biotechnology. He has served on many government committees and advisory boards for environmental protection and has been active in discussions on the potential misuse of microorganisms and the threat of bioterrorism and biological warfare. He currently co-chairs the American Society for Microbiology's Task Force on Biological Weapons.

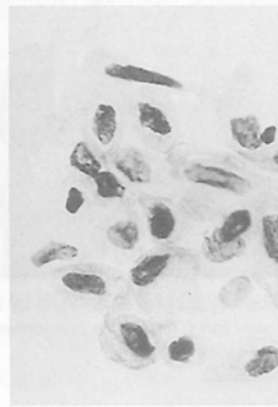
## Advanced Computers Acquired for Cervical Cancer Prevention

About 150 women die from cervical cancer in Hong Kong each year. However only a third of women have had a Pap smear test. Studies show that the majority of women who develop cervical cancer have not had a Pap smear or have been tested infrequently.

An AutoPap 300 QC machine and Pathfinder 'Helper' computers have recently been installed at the community clinic for the prevention of cervical cancer at the Faculty of Medicine for early detection of lesions to ensure the accuracy of Pap smears. The clinic, established in



Normal cervix cells



Pre-cancer cervix cells

1995, is the first in Hong Kong to employ such computer technology for this purpose. The equipment was acquired with a HK\$5.25 million donation from the Hong Kong Cancer Fund.

## Exchange with a Nautical Flavour

Under the Hong Kong-Mainland-Taiwan University Student Exchange Programme organized by New Asia College, students from New Asia College

visited the Ocean University of Qindao and National Taiwan Ocean University in May and June under the supervision of Profs. Fung Ming-chiu and Lam Hon-ming. They participated in a symposium and visits related to the programme's theme for this year, 'Ocean and Mankind'.

Then in July, delegations from the two partner universities paid a return visit to New Asia College, during which they were given a tour of the Harbour Hydraulic Laboratory, the Hong Kong International Terminal,

Ocean Park, and Po Lin Temple, and took part in a symposium.



Reception given by New Asia College for the delegations from Taiwan and the mainland

## Care for Postnatal Depressive Mothers

Research shows that one in 10 women in Hong Kong suffer from post-natal depression. If unattended, it may lead to family problems and even suicide and infanticide. Yet it is not easy for families and the mothers to recognize post-natal depression, making early diagnosis and treatment of the problem very difficult.

In collaboration with the Prince of Wales Hospital, the departments of Obstetrics & Gynaecology and Psychiatry have launched a large-scale systematic clinical screening service since 1st July to help fight against post-natal depression. Locally validated and internationally recognized psychometric instruments are used to identify proactively women suffering from post-natal depression in

the initial months postpartum and to provide appropriate care for these women. The service is the first of its kind which deals with the problem using a preventive approach.

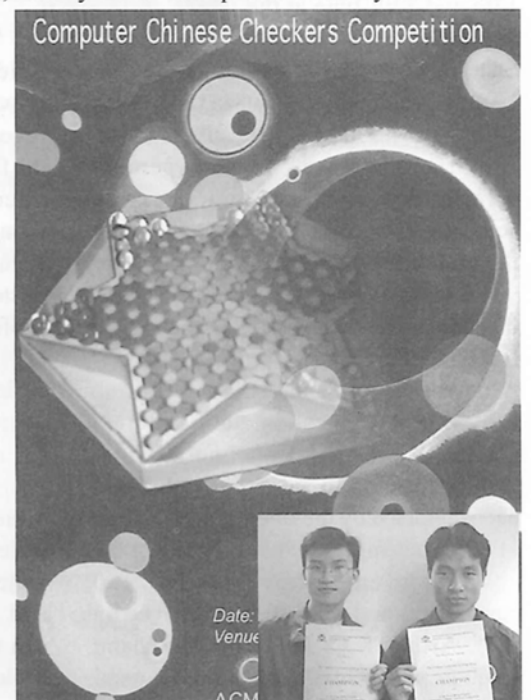
The service is actually the extension of a research on the same subject which began in 1995 at the University and the Prince of Wales Hospital. Pregnant women attending the Obstetrics Unit of the Prince of Wales Hospital and their spouses are educated in antenatal classes about post-natal depression and given questionnaires upon discharge from the postnatal ward. Those needing treatment are attended to accordingly.

A hotline and a psychiatrist-on-call service have also been established for emergency contact and consultation.

## University Students Win Checkers Competition

Two postgraduate students from the University's Department of Systems Engineering and Engineering Management, Kenny Lam Wai-ip and Timothy Chan Kun-chung, won the Computer Chinese Checkers competition held on 27th June at Hong Kong Baptist University. The competition was organized by the Association for Computing Machinery (ACM) Hong Kong Chapter.

The competitors came from the University of Macau, the Hong Kong University of Science and Technology, and The Chinese University. They had to design and develop Chinese checker-playing computer programs before the competition and compete using the programs. The game is played on a six-point star-shaped board between two players at two different points. The objective is to move all one's marbles across the chess board to occupy the opponent's home area.



## Secondary 7 Students Savouring the CU Campus

About 150 Secondary 7 students enrolled in a week-long summer class on campus from 20th to 25th July. This was the second summer course in languages and general education organized by the University in two years.

The students took both language and general education courses and

participated in extracurricular activities including visits to different departments and the Prince of Wales Hospital. Upon completion of the courses, the students were awarded a certificate of attendance. They may be partially exempted from the general education and first-year language course requirements if they

were eventually admitted to the University. The programme aims at heightening the awareness of the importance of language skills and general education, and fostering closer links between the University and local secondary schools.

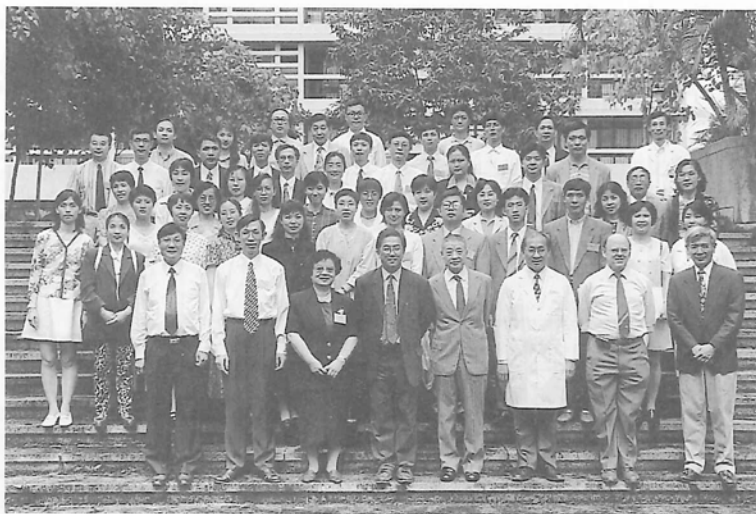


Participants of the Summer Class outside the Science Centre

## An Eventful Summer

University units participated in a large number of conferences, seminars, and workshops in the months of June and July. Here is a brief account of such activities:

- **The Third Summer School for Pathologists from China**, organized by the Department of Anatomical and Cellular Pathology, was held from 4th to 15th June at Shaw College. Sponsored by the Cheng Suen Man Shook Foundation, the course provided an account of new developments in diagnostic pathology and was intended to upgrade pathology practice on the mainland. A total of 60 pathologists from 18 cities in mainland China and from Macau attended.



- **The Public Policy Forum on Unemployment, Poverty and Social Policy** was organized on 17th June by the Faculty of Social Science and the Hong Kong Institute of Asia-Pacific Studies at the Cho Yiu Conference Hall to examine the pressing unemployment problem in Hong Kong and search for new directions for government policies. Forum speakers included government officials, social workers, policy experts, and academics.

- **The Advanced Course and Conference: From Basic to Applied Immunology** was held from 21st to 26th June at the University. It was organized by the Hong Kong Society for Immunology, the Clinical Immunology Unit, and Chung Chi College under the auspices of the International Union of Immunological Societies and the Federation of Immunological Societies in Asia-Oceania. Fifteen internationally renowned immunologists including Prof. Anne Kelso (right 3) from the Queensland Institute of Medical Research spoke to an audience of over 100 researchers and medical practitioners from all over the world on subjects such as T-cells and cytokines.



the Queensland Institute of Medical Research spoke to an audience of over 100 researchers and medical practitioners from all over the world on subjects such as T-cells and cytokines.

- **The International Conference on Modeling Geographical and Environmental Systems with Geographical Information Systems (GIS)** was organized by the Department of Geography, the Centre for Environmental Studies, and the International Geographical Union-Commission on Modeling Geographical Systems from 22nd to 25th June



at the Hong Kong Convention and Exhibition Centre. The conference arranged a full-day workshop on the application of GIS technology to real-life problems such as hurricane monitoring and

recovery water management. There was also an exhibition of the latest products and technology in GIS and the progress of R&D activities on the subject in local tertiary institutions.

- **A Workshop on the Teaching of Anatomy** was organized by the Department of Anatomy from 16th to 23rd July on campus. It examined the ways of teaching anatomy in different countries and introduced various advanced audio-visual equipment which enhances the teaching of the subject. Teaching staff from the Department of Anatomy also exchanged views and teaching experience with representatives from 15 medical universities from the mainland.

- **The 1998 Evidence Based Nursing Seminars**, organized by the Hong Kong Centre for Evidence Based Nursing and Midwifery in the Department of the Nursing, took place on 16th May and 20th June. Over 150 registered nurses, nurse specialists, nurse educators and administrators attended the seminars to explore the role of systematic reviews in evidence based nursing, how research evidence can improve the quality of nursing practice, and the usefulness of best practice information sheets.



- **A seminar on teaching evaluation** was organized by the Teaching Development Unit on 22nd June. Emeritus Professor Wilbert J. McKeachie, former chair of the Department of Psychology at the University of Michigan, was invited to run the seminar. He discussed how relevant data such as student ratings, general impressions of colleagues based on gossip, and teachers' personalities could be used to improve teaching and help make decisions on promotion and salaries. Over 20 teaching staff from different departments participated.



- **A Workshop on Adolescent Problems and Family Social Work** was organized by the practice team of the Family Social Work Practice and Research Project of the Department of Social Work at Sino Building on 4th July. The 180 or so participants who attended the workshop included social workers, school guidance teachers or counsellors, educational psychologists, teachers, nurses, students, and a pastor. Through case studies they acquired new insights into adolescent development, psychosocial problems young people encounter in schools and at home, and ways of dealing with them.

Members of the practice team (from left): Mrs. Christina Tsoi, Miss Judia Yue, Miss Leanna Lee, Miss Helena Pun, Dr. Joyce Ma, Mrs. Monica Yau, and Mr. Timothy Chan





### 新任講座教授 Professorial Appointment

大學委任華雲生教授為計算機科學與工程學講座教授，任期由一九九八年六月廿九日起生效。

華雲生教授先後於一九七四及七五年取得哥倫比亞大學理學士和理科碩士學位，繼而到柏克萊加州大學進修，一九七六年獲授計算機科學理學碩士學位，三年後獲工程學哲學博士學位。

華教授一九七九年受聘為柏杜大學電機工程學院助理教授，五年後晉升為副教授，八五年轉任伊利諾大學電機及計算機工程學系副教授，一九八九年升任教授。

他是多個專業學會的成員，更是電機及電子工程師學會院士。

Prof. Benjamin Wah Wan-sang was appointed professor of computer science and engineering on 29th June 1998.

Prof. Wah obtained his BS and MS in electrical engineering and computer science at Columbia University, and his MS in computer science and PhD in engineering at the University of California at Berkeley. Before joining the University, he was professor at the Department of Electrical and Computer Engineering in the University of Illinois at Urbana.

An IEEE fellow and recipient of the IEEE Computer Society Certificate of Appreciation for many times, Prof. Wah was also the first-runner-up of the Best Paper Award of the IEEE International Conference on Neural Networks in 1996. He is also a member of many professional organizations and has published extensively.

### 校慶活動

卅五周年校慶活動之「身心康泰在中大」的體適能測試，將於本月十五及十六日上午十一時半至下午二時半在富爾敦樓一零三室舉行。測試項目包括心肺功能、脂肪含量、肌肉力量、肌肉耐力、柔軟度和精神壓力，請踴躍參加。查詢請電體育部阮伯仁先生(內線六九八五)。

### 公積金計劃投資成績 Investment Returns of Staff Superannuation Schemes

總務處公布公積金計劃內各項投資基金於一九九八年七月及累積至該月的回報如下：

#### From the Bursary

The monthly and cumulative returns for July 1998 in the Designated Investment Funds of the 1995 Scheme and 1983 Scheme are as follows:

#### 一九九八年七月 July 1998

基金 Fund	1995 計劃 1995 Scheme	1983 計劃 1983 Scheme	指標回報 Benchmark Return
(未經審核數據 unaudited)			
增長 Growth	-0.52%	-0.32%	-2.20%
平衡 Balanced	0.07%	0.03%	-1.43%
穩定 Stable	0.42%	0.89%	-0.74%
銀行存款 Bank Deposit	0.75% (年息 Annualized 8.87%)	0.79% (年息 Annualized 9.32%)	0.72% (年息 Annualized 8.48%)

#### 一九九八年一月一日至七月卅一日 1st January to 31st July 1998

基金 Fund	1995 計劃 1995 Scheme	1983 計劃 1983 Scheme	指標回報 Benchmark Return
(未經審核數據 unaudited)			
增長 Growth	-1.12%	-2.12%	-5.67%
平衡 Balanced	2.26%	2.68%	-1.78%
穩定 Stable	1.67%	4.55%	1.64%
銀行存款 Bank Deposit	5.41% (年息 Annualized 9.31%)	5.48% (年息 Annualized 9.43%)	4.58% (年息 Annualized 7.89%)

### 學生工讀計劃 Student Campus Work Scheme

一九九八至九九年度學生工讀計劃基金現已接受申請。該計劃讓需要經濟援助的學生利用課餘時間協助教職員進行研究或處理其他工作，獲取薪酬(本科生和研究生工資皆為每小時五十元)。

工作性質規定為：(一)協助大學教員從事研究工作，(二)協助各行政單位在繁忙期間的工作，或(三)其他獲工讀計劃委員會批准之工作。

大學同人可向學生事務處索取申請表格，填妥後寄回范克廉樓一樓學生事務處，截止申請日期為一九九八年十月五日。

所有撥款只可用作支付本校工讀生薪酬，並須於一九九九年九月三十日前全數支付。獲資助之教職員須於一九九九年十月卅一日前擬就報告，經學生事務處轉呈有關捐助機構。

Applications for grants under the Student Campus Work Scheme are now invited from members of the academic and administrative staff. The aim of the scheme is to help students in need through paid campus work, which can take the form of assisting academic

## 宣布事項 ANNOUNCEMENTS

staff in their research projects and administrative staff in projects requiring a large task-force on a short-term basis, and any job assignments as may be approved by the Committee on Student Campus Work Scheme.

The pay is HK\$50 per hour for both undergraduate and graduate students. Completed application forms should be returned to the Office of Student Affairs at 1/F, Benjamin Franklin Centre no later than 5th October 1998.

Please note that approved funds should only be used as remuneration for students of The Chinese University, and should be expended in full before 30th September 1999. Supervisors of approved projects will be requested to forward a report to the Office of Student Affairs by 31st October 1999 for submission to the donors for information.

### 教學人員審議事宜及教職員進修資助申請/提名 Annual Academic Staff Review and Staff Development Grants Applications/Nominations

校方將審議一九九九至二零零零年度教學人員之擢升、教師職稱、退休/延任事宜，以及教職員進修資助之申請，請留意以下截止日期。

審議事宜	截止日期	遞交申請或提名/查詢
教師與導師之擢升	一九九八年九月三十日	有關教學人員審議之提名或申請，須於截止日期前送交人事處高級主任阮健聰先生(大學行政樓南座三樓人事處)。
教師職稱評審	一九九八年九月三十日	查詢請電內線七二八五或七二八零。
教師與導師之退休/延任	一九九八年十月十二日	
教職員與導師進修資助申請	一九九八年十月十二日	資助計劃項目詳見下期《中大通訊》 查詢請電內線七二八八或七一九一。

至於「甲」、「乙」及「丙」類服務條款職員之有關審議事宜，容後通告。

The annual academic staff review exercise for the academic year 1999-2000 will commence shortly and the following are the respective deadlines for applications/nominations:

Applications/Nominations for	Deadline	Submissions to be forwarded to/Enquiries
Promotion in respect of full-time teaching staff at instructor grade or above	30th September 1998	Mr. K.C. Yuen, Senior Assistant Secretary (Personnel), 2nd Floor, South Wing, University Administration Building.
Review of academic titles for serving teachers	30th September 1998	Please direct enquiries to Ext. 7285/7280.
Retirement/extension of service in respect of full-time teaching staff at instructor grade or above	12th October 1998	
Staff development grants in respect of full-time teaching staff, and non-teaching staff on Terms of Service (A) or equivalent contracts	12th October 1998	Details of the Staff Development Grants/Programmes will be announced in the next issue of the CUHK Newsletter. Please direct enquiries to Ext. 7288/7191.

The schedule for staff review matters of non-teaching staff on Terms of Service (A), (B) or (C) will be announced in due course.

### 儲蓄互助社委員名單

中大僱員儲蓄互助社一九九八至九九年度各委員會之成員如下：

理事會	監察委員會
社長：曾偉傑醫生	主席：馬金順先生
副社長：盧達生先生	秘書：馬彩嫻女士
司庫：鄭芝南先生	委員：陳尹璇先生
秘書：黃李淑儀女士	教育委員會
委員：趙光榮先生	主席：蔡玉妍女士
黃隆先生	秘書：林潔蓮女士
李小紅女士	委員：曾偉傑醫生
貸款委員會	張蘭珍女士
主席：蕭明標先生	蕭明標先生
秘書：陳淑英女士	王德忠先生
委員：陳建榮先生	鄭傑英先生

# 宣布事項 ANNOUNCEMENTS

## New System for Parking on Campus

In the interest of campus security and to alleviate crowded parking conditions at the University, the following system on campus parking has been endorsed by the University and will be implemented from 20th September 1998:

### I. Parking Labels for Staff

1. A staff of the University (or his/her spouse) who possesses a valid driving licence and ownership of a vehicle is eligible to apply for a **free** parking label.
2. An eligible staff who is residing on campus can apply for up to two **free** parking labels for each household. A third label can be issued at \$1,200 per label for each six-month period.
3. An eligible staff who is **not** residing on campus can apply for one **free** parking label only. Such a label can be used for up to two vehicles registered under the applicant or his/her spouse.
4. A staff member who normally drives to the University in a vehicle registered under another person may apply for one parking label at a fee of \$1,200 for each six-month period.
5. Vehicles bearing a staff parking label can be parked inside any indoor or restricted carpark, but **not** reserved carparks. All vehicles parked in indoor or restricted carparks must vacate by 3.00 a.m. on each day. Staff working in office overnight who is unable to vacate their parking space by 3.00 a.m. on a specific day should give prior notice to the Security Unit by calling Ext. 7999 or fax to 2603 5095.

### II. Parking Labels for Students

6. A limited number of **free** parking labels can be issued to full-time undergraduate students under special circumstances and on a need basis. Applicants shall first seek the endorsement and approval of the Dean of Students of the college concerned. Holders of these labels are **not** allowed to park on campus after midnight, with the exception of residential students.
7. A graduate student/assistant, or a part-time student of the University who possesses a valid driving licence and ownership of a vehicle is eligible to apply for one of the following **paid** labels designated for graduate/part-time students only:
  - For day-time parking (7.00 a.m. to midnight) only: \$1,000 for six months
  - For evening parking (5.00 p.m. to midnight) only: \$400 for six months \$250 for three months
8. A holder of any type of parking label for students who wishes to park his/her vehicle on campus beyond the valid hours shall be required to pay the regular parking fee as stipulated in paragraph 13 below.

### III. Parking Labels for Authorized Suppliers/Contractors

9. Authorized suppliers/contractors of the University who require frequent access to the campus are eligible to apply for a **paid** parking label for parking between 7.00 a.m. and midnight only.

10. The applicant must possess a valid driving licence and ownership of a vehicle (or authorization from the registered owner).
11. A fee of \$1,200 shall be charged for such a label for each six-month period.

### IV. Fee Charging for Visitors' Parking on Campus

12. Drivers of all vehicles **not** bearing a University parking label shall be charged for parking on campus through the following system:
  - (a) A parking ticket will be issued to the above drivers seeking access to the University via any of the three gates.
  - (b) These drivers will be required to pay their parking fees at the shroff's booth either at the University main gate or the Chung Chi gate before leaving the campus.
13. The charging schedules for parking on campus are:
  - First 30 minutes: **free**
  - Subsequent periods of 30 minutes each or part thereof: \$10

### V. Validation for Free Parking by Departments/Units

14. Department/unit heads can authorize validation of free parking for their visitors on **official** business by signing on and giving out a validation coupon to the visitor/driver concerned. Departments/units may obtain the validation coupons by completing a requisition form and returning it to the Security Unit in advance.

15. Department/unit heads in possession of validation coupons are responsible for safe-keeping all unused coupons and ensuring that these are issued only to visitors on business to the department/unit **with a parking ticket**.

### VI. Validation for Free Parking by Campus Residents

16. Staff members residing on campus can also authorize validation of free parking for their guests and visitors who park their vehicles in residential areas. Residents may obtain the validation coupons by completing a requisition form and returning it to the Security Unit in advance.
17. Residents in possession of validation coupons are responsible for safe-keeping the coupons and ensuring that these are issued only to their guests/visitors **with a parking ticket**.
18. Visitors/drivers with validation coupons should present their coupons with their parking tickets to the shroff's booth for fee waiver before driving away from the campus.

#### Notes for label holders:

- The six-month cycle for all paid labels starts either in October or April each year.
- A replacement fee of \$30 will be charged for each lost and damaged label.

For enquiries, please call the Security Officer at Ext. 7998 or fax to 2603 5095.

## 大學游泳池開放時間

### University Swimming Pool Opening Hours

大學游泳池由本月七日至十一月三十日之開放時間為：

第一節：上午十時三十分至下午一時四十分

第二節：下午二時三十分至六時十五分

星期日及公眾假期照常開放。

另，游泳池淺水區於下列日期及時間專供上課之用：

#### 體育部上學期游泳課程

星期	時間	日期
星期一	上午十時三十分至下午三時	7/9, 14/9, 21/9, 28/9, 5/10, 12/10, 19/10, 26/10, 2/11
星期二	上午十時三十分至下午四時十分	8/9, 15/9, 22/9, 29/9, 13/10, 20/10, 27/10, 3/11
星期三	上午十時三十分至下午三時	9/9, 16/9, 23/9, 30/9, 7/10, 14/10, 21/10, 4/11
星期四	上午十時三十分至下午四時十分	10/9, 17/9, 24/9, 8/10, 15/10, 22/10, 29/10, 5/11
星期五	上午十時三十分至十一時二十分	11/9, 18/9, 25/9, 9/10, 16/10, 23/10, 30/10, 6/11

#### 體育運動科學系教育學士學位課程

星期	時間	日期
星期一	下午三時至五時二十分	14/9, 21/9, 28/9, 5/10, 12/10, 19/10, 26/10, 2/11, 9/11, 16/11, 23/11, 30/11
星期三	下午三時至五時二十分	9/9, 16/9, 23/9, 30/9, 7/10, 14/10, 21/10, 4/11, 11/11, 18/11, 25/11

From 7th September to 30th November 1998, the opening hours of the swimming pool during term time will be as follows:

1st session: 10.30 a.m. to 1.40 p.m.

2nd session: 2.30 p.m. to 6.15 p.m.

The pool is open seven days a week including public holidays.

## Swimming Lessons

The shallow end of the swimming pool will be reserved for swimming lessons run by the Physical Education Unit during the first term as scheduled below:

Days	Time	Dates
Mondays	10.30 a.m.-3.00 p.m.	7/9, 14/9, 21/9, 28/9, 5/10, 12/10, 19/10, 26/10, 2/11
Tuesdays	10.30 a.m.-4.10 p.m.	8/9, 15/9, 22/9, 29/9, 13/10, 20/10, 27/10, 3/11
Wednesdays	10.30 a.m.-3.00 p.m.	9/9, 16/9, 23/9, 30/9, 7/10, 14/10, 21/10, 4/11
Thursdays	10.30 a.m.-4.10 p.m.	10/9, 17/9, 24/9, 8/10, 15/10, 22/10, 29/10, 5/11
Fridays	10.30 a.m.-11.20 a.m.	11/9, 18/9, 25/9, 9/10, 16/10, 23/10, 30/10, 6/11

## Full-time Bachelor of Education Programme

The shallow end of the swimming pool will be reserved for lessons of the full-time bachelor of education programme in sports science and physical education as scheduled below:

Days	Time	Dates
Mondays	3.00 p.m.-5.20 p.m.	14/9, 21/9, 28/9, 5/10, 12/10, 19/10, 26/10, 2/11, 9/11, 16/11, 23/11, 30/11
Wednesdays	3.00 p.m.-5.20 p.m.	9/9, 16/9, 23/9, 30/9, 7/10, 14/10, 21/10, 4/11, 11/11, 18/11, 25/11

## 更正

上月暑期特刊研究消息刊載獲本地研究基金撥款支持的項目中，「用普通話教授中文科對中學生學習中國語文的影響」研究的本校研究人員應為何偉傑教授。

· Personalia · 人事動態 · Personalia · 人事動態 · Personalia · 人事動態 · Personalia · 人事動態 · Personalia · 人事動態 ·

Information in this section can only  
be accessed with [CWEM password](#).

若要瀏覽本部分的資料，  
請須輸入[中大校園電子郵件密碼](#)。

## Service to the Community and International Organizations

- Prof. Arthur K.C. Li, vice-chancellor, has been appointed by the Chief Executive of the HKSAR as a Justice of the Peace from 1st July 1998 and as a member of the Board of Directors of the Provisional Hong Kong Science Park Company Limited from 18th June.
- Prof. Chung Yue-ping, dean of education, has been appointed by the Chief Executive of the HKSAR as a member of the Education Commission for two years from 1st July 1998. He has also been appointed by Peking University and Nanjing University as distinguished visiting professor from June 1996 and October 1997 respectively.
- Prof. Yeung Yue-man, professor of geography and director of the Hong Kong Institute of Asia-Pacific Studies, has been re-appointed by the Chief Executive of the HKSAR as a member of the Airport Consultative Committee till 31st December 1998.
- Prof. Tunney Lee, professor of architecture, has been appointed by the Committee of Science and Technology, Ministry of Construction of China, as an honorary adviser.
- Prof. Kenneth Young, pro-vice-chancellor, has been appointed by the Chief Justice as a member of the Barristers Disciplinary Tribunal Panel for five years from 3rd May 1998.
- Prof. Charles K. Kao, honorary professor of engineering, has been appointed by the Financial Secretary as chairman of the Energy Advisory Committee for two years from 15th July 1998.
- Mrs. Clara Lee, director of students affairs, has been re-appointed by the Secretary for Education and Manpower as a member of the Joint Committee on Student Finance for one year from 1st May 1998.
- Prof. Lee Shiu-hung, professor of community medicine, has been re-appointed by the Secretary for Education and Manpower as chairman of the Occupational Deafness Compensation Board for three years from 1st June 1998. He has also been appointed as an honorary adviser of the SightFirst China Action Executive Committee.
- Prof. Christopher J. Haines in the Department of Obstetrics and Gynaecology was appointed as a visiting professor to Manila Central University on 25th March 1998, and as convener of a steering committee for the formation of the Asia Pacific Menopause Federation in March 1998.
- Prof. Richard M.W. Ho, registrar, has been re-appointed by the Secretary for Education and Manpower as a member of the Hong Kong Council for Academic Accreditation for one year from 8th June 1998.
- Prof. Wong Po-choi in the Department of Information Engineering has been appointed by the Secretary for Education and Manpower as a member of the Board of Education for two years from 1st July 1998.
- Prof. Daniel Shek Tan-lei in the Department of Social Work has been appointed as an editor of the *Hong Kong Journal of Social Work* for two years from February 1998.
- Prof. Fok Tai-fai in the Department of Paediatrics has been nominated for appointment as a member of the Nursing Board from 9th September 1998.
- Dr. Joseph Lau, director of the Centre for Clinical Trials and Epidemiological Research, has been re-appointed as an examiner for the Joint Examination of the Hong Kong College of Radiologists.
- Prof. Albert Lai Kin-yue in the Department of Electronic Engineering has been invited by the Independent Commission Against Corruption to serve as an honorary analyst of an electronic product.
- Prof. Helen F.K. Chiu in the Department of Psychiatry has been elected to the Board of Directors of the International Psychogeriatric Association for four years from 1st August 1998, and as president of the Hong Kong Psychogeriatric Association for two years from 16th June 1998.
- Prof. Chan Wing-wah in the Department of Music was commissioned by the Hong Kong Schools Music and Speech Festival to compose *Reviving Arts and Culture* for their 50th anniversary. The piece was premiered by the Joint-schools Choir and Orchestra conducted by Prof. Chan at the Hong Kong Convention and Exhibition Centre on 30th July 1998.
- Prof. Leslie N.K. Lo, director of the Hong Kong Institute of Educational Research, has been appointed as an executive member of the Board of Directors of the Research Association for Strategic Development of Education in China, as guest professor of Nanjing University, Capital Normal University, and Shandong Normal University in 1997, and guest professor of Jiangxi Normal University, Yunnan Normal University, Southwest China Normal University and Shanghai Teachers University in 1998.
- Prof. Cynthia S.Y. Chan in the Department of Community and Family Medicine was made a fellow of the Canadian College of Family Physicians on 9th May 1998.
- Prof. Jack C.Y. Cheng in the Department of Orthopaedics and Traumatology has been appointed as a member of the international editorial board of the English edition of the Italian Journal of Pediatric Orthopaedics or *Rivista Italiana Di Ortopedia E Traumatologia Pediatrica*.
- Prof. Joseph C.K. Lee, dean of medicine, has been appointed as a member of the editorial board of the *Chinese Higher Medical Education Journal* with immediate effect.

(Information in this section is provided by the Information and Public Relations Office. Contributions should be sent direct to that office for registration and verification before publication.)

## 第九屆「香港書展」參展後記



第九屆「香港書展」已於七月二十八日完滿結束。是次書展於香港會議展覽中心新翼展覽館舉行，共有三百五十四個參展商參加，參觀人次達三十五萬七千；規模宏大，堪稱城中盛事。

中文大學出版社一直積極支持並參與本地的出版及文化活動，今年第八度參加書展。為更有效推廣本社的出版物，今年我們租用了四個攤位，其中兩個用以展銷本社書籍和錄像帶，另兩個則闢作新品《文淵閣四庫全書電子版》的專介展場。

本社一向出版學術味道較濃、較富知識性的書籍，參觀人數自不可與漫畫和流行讀物的攤位同日而語；然而，我們自有一群知音人、捧場客。一如往年，本社展銷了各類書籍，題材廣及文學、歷史、哲學、藝術、中國及香港研究、社會、經濟、法律、心理學、醫學等，而以教育、語文、商管等出版物的銷量較佳。本社今年的重點推介是《親子齊學數學》錄像帶系列，家長看過示範帶後，甚表欣賞，小孩子則對附送的鼠標滑墊興趣更濃，結果共售出逾二百套。此外，本社《中學生作文語誤分析》、《初中學生作文評賞》等學習語文的書籍，亦頗受家長及學生歡迎；有些家長更即場向我們反映，希望本社能出版更多指導學生寫作的專書，以幫助子女提高中、英語文水平。

本社一貫以弘揚學術文化為宗旨，在書展極力推薦由中國文化研究所主編的「21世紀論叢」，該叢書全套共七本，包括《轉化中的香港：身分與秩序的再尋求》、《全球關係中的中國處境》、《90年代中國農村狀況：機會與困境》、《90年代的「後學」論爭》、《上海：城市、社會與文化》、《中國近現代經濟倫理的變遷》及《經濟倫理與近現代中國社會》，其中以研究香港社會的《轉化中的香港：身分與秩序的再尋求》銷量較佳。學術書籍的讀者層面無疑較狹窄，銷量也不免略為遜色；不過此類書籍亦能維持一定銷量，有的更獲得不錯的反應，例如由醫學院多位教授主編的 *A Textbook of Clinical Medicine for Asia*，數天內近二十本存貨一掃而空，部分向隅讀者需訂購。如此專門、嚴肅的書籍在書展內仍有市場，實屬可喜。

由迪志文化出版有限公司出版、本社負責本地及海外銷售的《文淵閣四庫全書電子版》(以下簡稱《四庫電子版》)，運用先進的電子數碼科技，將匯集中國歷代重要典籍的《四庫全書》文淵閣版本電子化，並且加入多種輔助功能，以促進中國典籍的研究、流傳和普及。由於認識《四庫全書》的普羅讀者人數有限，是以參觀者並不算多。然而，有興趣參觀的人士，在聽罷本社工作人員的介紹並親自試用之後，大多認同我們「將先進科技與中華文化結合，藉以保存及弘揚中國傳統文化」的信念，覺得此項文化工程極具意義；而《四庫電子版》的多項功能如分類檢索、標題檢索、全文檢索等，輔助研究工具如附加的《四庫大辭典》、《中華古漢語字典》等，亦獲得讚賞。我們知道《四庫電子版》的售價實非一般讀者能夠負擔(「原文及標題檢索」版共一百六十五隻光盤，售港幣三萬元；「原文及全文檢索」版共一百七十五隻光盤，售八萬五千元)，不過，能夠在書展中向讀者介紹我們的產品，宣揚我們的信念，並獲得大家的認同，已邁出了成功的一步。

為期六天的書展中，到本社攤位參觀的人士包括了特首董建華先生伉儷和貿易發展局總裁施祖祥先生，本社社長陸國燊博士等向他們介紹並示範《四庫電子版》。陸博士更向董先生致送中大畫冊《人傑地靈》，以資紀念。

陸博士總結今年參展的成績說：「今年本港經濟低迷，出版界最初對書展不抱厚望，但結果尚強差人意，不像先前想像的悲觀。大學出版社並非流行書出版社，而書展參觀者多在二十五歲以下，所以我們不會博得滿場掌聲。但每年書展入場人次總在三十萬以上，所以書展是一年一次與市民接觸的最佳機會。同事們日以繼夜工作，十分辛苦，本人謹代表出版社向他們致謝。」

中文大學出版社



## 中大通訊 CUHK NEWSLETTER

網址 website <http://www.cuhk.edu.hk/puo/>

1. 本刊逢四日及十九日出版。
2. 來函或投稿請寄沙田香港中文大學秘書處出版事務處《中大通訊》編輯部(電話2609 8584, 傳真2603 6864, 電郵pub2@uab.msmail.cuhk.edu.hk)。
3. 投稿者須附真實姓名、地址及聯絡電話，文章則可用筆名發表。
4. 編輯有權刪改及決定是否刊登來稿，不欲稿件被刪者請預先聲明。
5. 本刊所載文章只反映作者之觀點和意見，並不代表校方或本刊立場。
6. 所有內容未經編者書面准許，不得轉載。
7. 本刊每期發行三千八百份，免費供校內教職員索閱，部分郵寄本地教育機構及與大學有關人士。私人索閱，請致函本刊查詢。

1. The Newsletter is published on the 4th and 19th of each month.
2. All contributions and suggestions should be sent to the Editor, CUHK Newsletter, Publication Office, University Secretariat, The Chinese University of Hong Kong (tel. 2609 8584; fax. 2603 6864; e-mail pub2@uab.msmail.cuhk.edu.hk).
3. Contributions should bear the writer's name and contact telephone number, and may be published under pseudonyms. No anonymous letters will be published.
4. The Editor reserves the right to reject contributions and to edit all articles without notice for reasons of clarity, length or grammar. Those who do not want to have their articles amended should indicate clearly in writing.
5. The views expressed in the CUHK Newsletter are those of the authors, and are not necessarily those of the University or the Editor.
6. No part of this newsletter may be reproduced without the written consent of the Editor.
7. This publication has a circulation of 3,800 and is primarily intended for staff members of CUHK. Copies are also sent to local educational institutions and individuals associated with the University. Those who wish to be included on the mailing list please contact the Newsletter direct.

### 截稿日期

期數	出版日期	截稿日期
Issue no.	Issue date	Deadline for contributions
131	19.9.98	2.9.98
132	4.10.98	17.9.98
133	19.10.98	29.9.98
134	4.11.98	19.10.98
135	19.11.98	2.11.98
136	4.12.98	17.11.98
137	19.12.98	2.12.98

香港中文大學出版事務處出版

編輯：梁其汝 助理編輯：蔡世彬 李琪 陳偉珠 製作：梁淑嫻

Published by the Publication Office, The Chinese University of Hong Kong

Editor: Amy K.Y. Leung Assistant Editors: Piera Chen, Lawrence Choi Graphic Designer: Pony Leung

印刷：鮑思高印刷有限公司

Printing: Don Bosco Printing Co. Ltd.

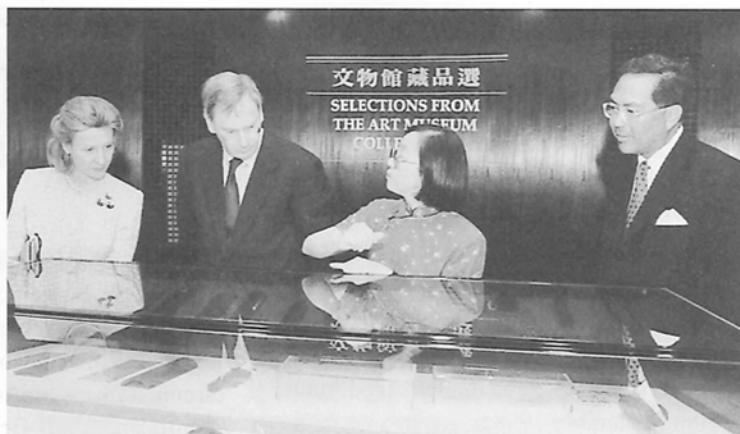
## 馬毓真特派員蒞校



李國章校長(左)致送紀念品予中國外交部駐港特派員公署馬毓真特派員。馬先生於六月訪問本校，全面參觀本校的設施和發展，包括中國文化研究所、工程學院大樓、中藥研究中心、香港生物科技研究院，以及科學園填海工程等。這是馬毓真特派員上任以來，首次訪問香港的大專院校。

## 告羅士打公爵專訪中大

告羅士打公爵伉儷七月廿一日蒞校參觀，由校長李國章教授向公爵伉儷介紹中大校園的發展，並陪同參觀文物館，欣賞該館藏品和丁衍庸作品展覽；及後公爵伉儷訪問建築學系，系主任李燦輝教授向他們介紹學生習作，並示範先進科技在教學及研究工作的應用。是次為香港回歸中國後公爵伉儷首次訪港，而中大是他們參觀的唯一本地大學。圖為文物館館長高美慶教授(右二)向他們介紹該館藏品，右一為李國章校長。



## 內地高層財務幹部受訓

亞太工商研究所與中國信息產業部首度合辦「郵電財務管理與融資培訓班」，以增強高層幹部在財務管理及融資方面的知識。

課程為期一個月，於六月下旬開展，學員共二十四人，均為原郵電部及各省郵政、電信企業的財會部門領導或骨幹人員，由原郵電部財務司副司長薛濤海率領。課程內容由本校與原郵電部一同設計，以配合郵電財務管理人員所需。課程兼顧理論與應用，由中大資深教授和業界傑出人士主講。

該課程獲香港聯合交易所、香港電訊公司、美國電訊公司、航天科技國際有限公司、中國銀行、美國摩根銀行、荷蘭銀行及美國美州銀行有限公司贊助。



李國章校長(左)、原郵電部財務司副司長薛濤海(中)與工商管理學院院長李金漢教授(右)出席課程結業典禮

## 再辦語文及通識夏令班

本校今年續辦為期一週的語文及通識夏令班，為一百五十名優秀預科生提供一項充實的暑期活動。

參加者必須修讀語文及通識課程，通識課程由李國章校長、教務長何文匯教授和哲學系李天命博士主講。學員亦須選修普通話、粵語及英語精修課程。修畢課程並考試及格者，倘於明年獲取錄入讀本校，可獲豁免一個通識教育學分，並免修部分一年級語文精修課程。



語文及通識夏令班於七月二十至廿五日舉行，結業茶聚於八月三日在崇基學院教職員聯誼會舉行，修畢課程者獲發證書。

## 校外進修學院首辦開學禮

校外進修學院三十多年來首次舉行開學典禮，以慶祝全港首設的警學及保安進修課程於六月六日順利誕生。主禮嘉賓包括

(前排左三起)教務長何文匯教授、警務處人事及訓練處高級助理處長梁豐順先生和進修學院主任尹葉芊芊博士。該課程招收三百五十名學員，九成九是警察。



## 電腦室開放日

該院最近又增設電腦至八十台，以配合課程發展，並於六月杪舉辦為期四天的開放日，供市民參觀和試用。副校長廖柏偉教授(右二)為開放日主禮嘉賓。

## 港滬醫學交流



社區及家庭醫學系系主任李紹鴻教授(左)六月初率團到上海醫科大學交流，並跟該校公共衛生學院姜慶五教授(右)代表雙方簽署為期兩年的學術交流備忘錄。

## 新亞與兩岸學生互訪



青島海洋大學和台灣海洋大學於七月杪訪問新亞書院，並合辦「海洋與人類」研討會。新亞較早前曾先後派出代表團往訪該兩校，開展該院第五屆香港及兩岸大學生互訪活動。圖為新亞學生參觀台灣海洋大學。



## 新紀元行政管理精英

本校與九龍總商會本月初首次合辦「新紀元行政管理精英培訓計劃」，加強香港和內地大學生的交流，加深彼此的了解。

一百名來自北京大學、清華大學、人民大學、南開大學、復旦大學、雲南大學、內蒙古大學、新疆大學等內地十九所綜合大學的三年級學生，到中大校園住宿兩週，與本校學生一起作息，透過日常接觸、家訪、講座、實地考察、研討會、合作研究項目等，了解各地社會文化特質，並吸取行政管理知識和經驗。

本校教師、九龍總商會會員和其他工商界領袖，以及駐港領事和文化機構的代表，向學員講解香港概況和各國生活文化，並從跨文化的角度探討香港的管理特色。此外，學員又實地了解香港的城市規劃、交通網絡，以及經濟金融體系的運作。

結業禮於八月十三日舉行，由九龍總商會理事長湯國華先生、本校大學輔導長郭少棠教授和國家教育部靳諾司長致詞。該計劃首兩年經費由九龍總商會贊助。

## 檢討社會保障

社會學系呂大樂教授與社會工作學系王卓祺教授於五月進行了電話民意調查，以了解市民對失業、貧窮，以及相關政府政策的看法。

調查結果顯示，受訪者認為失業問題嚴重，最有效的解決方法是靠個人努力，而政府在解決貧窮和失業問題上的表現不合格。受訪者大致接受及同情領取綜援金的人士，但同時認為他們應自食其力，不要長期依賴社會救濟。

研究人員總結該有趣現象時指出，社會正在形成新的訴求：香港的社會援助系統需要建立新的制度，以應付不同性質的需要。即一方面社會要設有最後的安全網，以援助身處困境的人士；另一方面，要有一種應付過渡性困境、具保險意味的援助制度，以解決市民燃眉之急，而最終又可促使受助人士盡快回復經濟獨立的生活。

## 五科研究生奪電腦跳棋冠軍

系統工程與工程管理學系兩名研究生林偉業和陳貫中成為本年度電腦中國跳棋比賽雙冠軍。

賽事由電子計算機學會香港分會主辦，於六月廿七日假香港浸會大學舉行。參賽者須以各自於賽前編寫的下棋電腦程式比賽，以率先把自己的波子全部攻進對方的範圍者勝。

比賽採雙循環制，每位參賽者均須與其他參賽者對戰兩局，分先後下子。勝出局數最多者為冠軍。

參賽者來自中大、科大和澳門大學。有的因為對手的電腦程式不完善而輕易取勝；有的在棋盤中央混戰一場才能把一粒波子送抵目的地；更有的要鬥至最後一著才能分勝負。

比賽結束，上屆冠軍林偉業和首次參賽的陳貫中的成績相同，並列冠軍。

## 網上培訓小作家

教育學院本月推出惠及海內外華人的「小作家網上培訓計劃」，以提高學生的思維和中文寫作能力，並為教師提供更多樣和有效的教材。

該計劃由課程與教學學系何萬貫教授策劃及設計。他表示，該計劃是從認知心理學層面設計，著眼寫作部署、文章結構等，一反過去只著重糾正錯字、錯句的批改方式。

該計劃主張多讀多寫，參加者每十天要提交一篇作文，由資深語文教師和作家修改指導。

## 訊息網絡研究所動向



左起：林永君先生、程伯中教授、楊綱凱教授、楊瑞輝教授、張國偉教授、黃錦輝教授

訊息網絡研究所上月五日舉行儀式，慶祝新辦事處啟用和新的技術開發子公司——「慧科訊業有限公司」(Wisers Information Ltd)成立。

訊網所所長張國偉教授和副校長兼訊網所董事會主席楊綱凱教授在儀式上致詞，闡述中大在科研和技術轉移的成就；慧科行政董事林永君先生概述公司的發展大計，並即場示範了公司的產品。他們聯同工程學院院長程伯中教授、訊網所董事楊瑞輝教授和慧科董事黃錦輝教授主持剪綵儀式；秘書長兼中大基金會秘書梁少光先生則主持切燒豬儀式。

慧科由中大基金會間接佔有一半股份，另一半由訊網所原本的工程開發人員持有。慧科採用由中大開發的雅博

(IPOC) 全文搜索器，為用戶提供度身訂造的新聞服務，其「電子報攤」現供免費試用，讀者可到 <http://www.newsy.net> 收看新聞。立法會秘書處已採用慧科服務，為立法會議員提供網上剪報資料，林永君展望該公司可在兩年內收支平衡。

另一方面，訊網所亦積極拓展其他技術轉移項目。該所除在何善衡工程學大樓設辦公室外，更在香港生物科技研究院租用約三千平方呎的辦事處。新辦事處設有一個多媒體示範試驗場、大型DEC4000伺服器，以及經專線接駁至大學的電腦系統。該所剛獲工業署工業支援基金撥款約一千二百萬元，用以成立綜合通訊研究所(Integrated Communications Laboratory)，開發各種通訊技術。

## 五至七月學術研討活動撮錄



戊戌維新百周年紀念國際學術會議(五月十四至十五日)  
由歷史系與北京清華歷史系合辦，崇基學院協辦



兩性角色工作坊之「愛滋？我知！健康婦女新開始」(六月六日)  
由香港亞太研究所性別研究計劃與香港婦女中心協會合辦

中國現代文學研討會(六月十一至十三日)  
由中國語言及文學系主辦



「失業、貧窮與政府的承擔」公開論壇(六月十七日)  
由社會科學院和香港亞太研究所合辦

基本及應用免疫學研討會(六月廿一至廿六日)  
由臨床免疫學組、崇基學院和香港免疫學會合辦

「地理信息系統在塑造地理及環境系統的應用」國際研討會(六月廿二至廿五日)  
由地理系、環境研究中心和國際地理學聯合會合辦

九八港滬台零售業比較與發展研討會(六月廿三至廿四日)  
由市場學系、上海大學國際商學院和台灣中山大學管理學院合辦

傑出公開講座之「香港的數學——面對二十一世紀的挑戰」(七月四日)  
由數學講座教授丘成桐教授主持



尤德爵士紀念基金訪問教授公開講座之「石油污染物的生物清除法」(七月二十日)  
由美國路易斯維爾大學生物講座教授 Prof. Ronald M. Atlas 主持

解剖學教學工作坊(七月十六至廿三日)  
由解剖學系主辦，王寬誠教育基金會、新亞明裕基金訪問學人計劃和邵逸夫爵士傑出訪問學人計劃贊助

「海峽兩岸暨香港地區當代文化之變遷」研討會(七月廿二至廿三日)  
由中大、北大和台大合辦



## 化學系主辦國際化合物研討會

化學系上月二至七日在香港會議展覽中心主辦第九屆國際新穎芳香化合物研討會，以促進各地芳香化合物有關專家的學術交流。是次研討會亦為本校三十五周年校慶活動之一。

芳香化合物擁有特殊的「π電子」排列，並具有不尋常的化學、物理及生物性質，廣泛應用為高效藥物，以及高科技工業中具有



光、磁效應的材料。有些芳香化合物甚至可以模擬生命體內某些酶分子功能。

會議獲香港科學會及香港化學會贊助，開幕典禮由李國章校長主持，國家自然科學基金會主任張存浩教授致詞。

波士頓學院 Prof. Lawrence T. Scott 主持首屆「野副鐵男教授紀念講座」，講題為「含無掩蔽凹面之最短線聚芳烴」。會議另有十二篇大會報告、二十五篇邀請報告，以及超過一百五十篇牆報，與會者超過二百五十人。

## 下世紀中國環境規劃

全球研究中國地理的學者上月十三至十五日雲集本校，出席「二十一世紀的中國和世界」國際地理學術討論會，共同探討下世紀中國和世界面臨的環境、發展、規劃，以及地理的教育與方向等問題。



逸夫書院校董會主席馬臨教授在會上致詞

與會者近三百名，來自內地、香港、澳門、台灣、美國、英國、加拿大、日本、挪威、尼泊爾等地，提交論文二百二十篇，縱論全球氣候變化和區域性氣候反常及其影響、厄爾尼諾現象的影響及抗災方法、長江水災和黃河斷流、香港在珠江三角洲發展的地位，以及香港環境影響評估等。

會議假逸夫書院大講堂舉行，由地理系、逸夫書院、港大地理及地質學系、浸大地理系、中國地理學會、香港地理學會和中國科學院地理研究所合辦。

大會另於逸夫書院展示中大、港大和浸大地理系的簡介和香港的地理教材，而內地和台灣各大學的地理系則展出各自的科研成果。

## 首創中藥基因鑑定技術

中藥研究中心採用基因技術，率先成功鑑定多種中藥材，其中對黨參的鑑定技術已取得美國專利，為推動中醫藥現代化與科學化跨出了關鍵一步。

本校上月十一日在科學館舉行「中醫藥科發展簡佈會」，由中藥研究中心主任畢培曦教授介紹本校在中醫藥研究的突破進展和未來發展。

他說，傳統鑑定中藥材的方法是觀察產品的形狀，因此並不適合鑑別形態相似，或已加工成片狀或粉末狀的產品。中藥研究中心自九二年開始另闢蹊徑，開發基因分辨技術，迄今已成功鑑定人參、西洋參、黨參和淫羊藿等五十多種常用名貴中藥材，更因成功分辨不同產地的黨參而取得美國專利。

生物化學系馮國培教授、王駿教授和陳振宇教授也在會上論述多項中藥研究的發展。

王駿教授表示，中草藥的可靠鑑定是中醫藥科學化的關鍵，下一步是研究多種中草藥合成後藥效的變化，以掌握中草藥有效成分的代謝途徑，破解基因控制密碼，最終達到工業化生產中藥有效成分的目標，而不必依賴自然界的有限供給。

## 無線校園計劃

工程學院獲校方資助二百萬元，推行為期一年的無線校園試驗計劃，在何善衡工程學大樓裝置無線區域網絡，並分別向訊息工程學系和計算機科學與工程學系的學生免費提供掌上型電腦和裝置了無線網絡插卡的手提電腦，以加強師生聯繫和溝通。例如教師可以在課堂上利用手提電腦進行測驗，即時根據學生的成績而調節教學方式和進度，而學生也可向老師反映課堂內容不明白的地方。

工程學院亦會和威爾斯親王醫院合作發展無線資訊網絡系統，方便醫生和護士在巡房時能準確快捷獲取和輸入病人的病情，以提高醫療效率。此外，更會嘗試將無線網絡應用擴及地理訊息系統。

## 醫學快訊

### 中醫藥學發展

本校與東華三院在六月五日簽署合作備忘錄，合力推動有關中醫藥學的教育、人才培訓及研究計劃。

根據協議，本校由一九九九年開辦的中醫學士課程學員，將分派到廣華醫院中醫門診部接受臨床訓練。雙方亦將合辦研討會和科學會議，研究中醫藥的臨床應用，改善廣華醫院中醫門診部的病歷紀錄系統，以及開展中藥的安全和正確應用的醫療研究。另外，也會加強與內地中醫藥專家和卓越研究中心的交流。一些獲中大邀請來校講學的內地中醫藥專家會暫派到廣華醫院中醫門診部，而部分門診部的中醫師會應邀出任中大中醫課程的兼任講師。

廣華醫院中醫門診部是本港醫院中規模最大的中醫門診部，自一九二二年起服務市民，至今每天求診的病人逾八百五十名。該門診部不但可為中大的中醫學學生提供實習機會，亦有助於發展

實據為本的研究。東華三院總理王定一先生捐款二百萬元，成立王澤森博士發展基金，支持雙方推動中醫藥發展的工作。

### 預防產後抑鬱症服務

香港不少婦女患有產後抑鬱症，每年約有六千名病患者得不到適當治療，造成很多家庭問題，甚或自殺及殺嬰。產後抑鬱症一直為人忽視，主要原因是其病徵較難讓病者和家屬察覺；其次是人們大多都不敢正視異常的情緒不安行為，尤其恐懼與「精神問題」扯上關係，導致診斷及治療上困難重重。

婦產科學系和精神科學系最近聯同威爾斯親王醫院為產婦提供防產後抑鬱症的嶄新服務，這是亞洲首個有系統的大型產後抑鬱症評估服務。威爾斯親王醫院會在產前講座講解抑鬱症，讓孕婦及其伴侶預先了解，而在產婦出院前，則會安排她們填寫兩份心理問卷。一旦發現她們有產後抑鬱的傾向，便會

安排覆診，甚至入院，由產科及精神科的醫護小組治理。

#### 產後抑鬱症病徵

- 易哭、情緒低落
- 易發脾氣
- 失眠、早起
- 食慾不振、體重下降
- 疲倦、精神難以集中
- 對事物失去興趣
- 不願和外界接觸
- 內疚自責
- 對未來沒有希望
- 有傷害自己或嬰兒的想法

### 先進技術預防子宮頸癌

醫學院獲香港癌症基金會資助逾五百萬元，增設先進電腦設備，提高柏氏抹片檢查的準確度，加強防範子宮頸癌。

這些電腦設施安裝於醫學院的預防子宮頸癌檢驗社區診所，能減少人為的錯誤判斷，及早治理子宮頸癌。

子宮頸癌是一種婦女常見的惡性腫瘤，每年全球的新症約有五十萬宗；香港則有四百五十至五百宗，每年死亡人數約為一百五十。柏氏抹片可檢驗子宮頸細胞的變化，讓醫生辨別子宮頸細胞的早期受損情況，以預防其惡化為癌病。

該所是全港唯一免費提供柏氏抹片檢查的診所，並進行有系統的資料搜集，以協助制定預防計劃。

### 護眼基金會獲贈款

眼科及視覺科學系的護眼基金會獲葉盧秀翹女士(中)捐贈四十二萬七千元，以開展更多社區外展活動。

葉太於五月八日至十日在香港藝術館展售其油畫，收益概捐予護眼基金會。支票交接儀式由九龍東區扶輪社社長葉志雄先生(左)和眼科及視覺科學講座教授曹安民教授(右)主持。

