

# CENG3420

## Lecture 04: Performance

**Bei Yu**

`byu@cse.cuhk.edu.hk`

2017 Spring



香港中文大學  
The Chinese University of Hong Kong

# Performance Metrics

## Purchasing perspective

Given a collection of machines, which has the

- ▶ best performance ?
- ▶ least cost ?
- ▶ best cost/performance?

## Design perspective

Faced with design options, which has the

- ▶ best performance improvement ?
- ▶ least cost ?
- ▶ best cost/performance?



# Performance Metrics

Both (purchasing & design) require

- ▶ basis for comparison
- ▶ metric for evaluation

## Our Goal

Is to understand what factors in the architecture contribute to overall system performance and the relative importance (and cost) of these factors



# Throughput v.s. Response Time

## Response time (execution time)

- ▶ The time between the start and the completion of a task.
- ▶ Important to individual users

## Throughput (bandwidth)

- ▶ The total amount of work done in a given time
- ▶ Important to data center managers



# Throughput v.s. Response Time

## Response time (execution time)

- ▶ The time between the start and the completion of a task.
- ▶ Important to individual users

## Throughput (bandwidth)

- ▶ The total amount of work done in a given time
- ▶ Important to data center managers

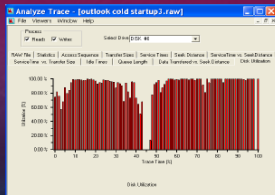
Will need different performance metrics as well as a different set of applications to benchmark **embedded** and **desktop** computers, which are more focused on response time, versus **servers**, which are more focused on throughput



# Response Time Matters

## It's the Hard Disk, Stupid!

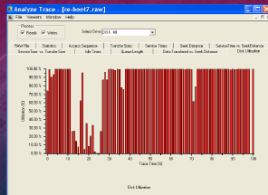
### Re-Boot/Startup on Home PC



Elapsed Time 105.213536, s  
Disk Busy Time 91.368480, s  
Average Data Rate 6.60669, MB/s

**86% BUSY**

### Starting Outlook



Elapsed Time 45.700667, s  
Disk Busy Time 41.056997, s  
Average Data Rate 1.37389, MB/s

**89% BUSY**



Justin Rattner's ISCA-08 Keynote (VP and CTO of Intel)



# Defining (Speed) Performance

- ▶ To maximize performance, need to minimize **execution** time

$$\text{performance}_X = \frac{1}{\text{execution\_time}_X}$$

- ▶ If X is  $n$  times faster than Y, then

$$\frac{\text{performance}_X}{\text{performance}_Y} = \frac{\text{execution\_time}_Y}{\text{execution\_time}_X} = n$$

- ▶ Decreasing **response** time almost always improves throughput.



## EX-1

If computer A runs a program in 10 seconds and computer B runs the same program in 15 seconds, how much faster is A than B?





# Performance Factors

- ▶ CPU execution time (CPU time): time the CPU spends working on a task
- ▶ Does not include time waiting for I/O or running other programs

$$\begin{aligned}\text{CPU execution time} &= \# \text{ CPU clock cycles} \times \text{clock cycle time} \\ &= \frac{\# \text{ CPU clock cycles}}{\text{clock rate}}\end{aligned}$$

## Can improve performance by reducing

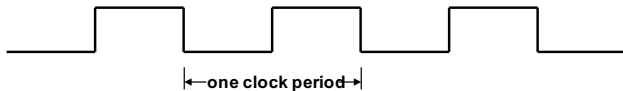
- ▶ Length of the clock cycle
- ▶ Number of clock cycles required for a program



# Review: Machine Clock Rate

Clock rate (clock cycles per second in MHz or GHz) is inverse of clock cycle time (clock period)

$$CC = \frac{1}{CR}$$



10 nsec clock cycle => 100 MHz clock rate

5 nsec clock cycle => 200 MHz clock rate

2 nsec clock cycle => 500 MHz clock rate

1 nsec ( $10^{-9}$ ) clock cycle => 1 GHz ( $10^9$ ) clock rate

500 psec clock cycle => 2 GHz clock rate

250 psec clock cycle => 4 GHz clock rate

200 psec clock cycle => 5 GHz clock rate



## EX-2: Improving Performance Example

A program runs on computer A with a 2 GHz clock in 10 seconds. What clock rate must a computer B run at to run this program in 6 seconds? Unfortunately, to accomplish this, computer B will require 1.2 times as many clock cycles as computer A to run the program.



# Clock Cycles per Instruction

- ▶ Not all instructions take the same amount of time to execute
- ▶ One way to think about execution time is that it equals the number of instructions executed multiplied by the average time per instruction

**CPU clock cycles = # instruction × clock cycle per instruction**

## Clock cycles per instruction (CPI)

- ▶ The average number of clock cycles each instruction takes to execute
- ▶ A way to compare two different implementations of the same ISA



# Effective (Average) CPI

$$\sum_{i=1}^n CPI_i \times IC_i$$

$IC_i$ : percentage of the number of instructions of class  $i$  executed

$CPI_i$ : (average) number of clock cycles per instruction for that instruction class

$n$ : number of instruction classes

- ▶ Computing the overall effective CPI is done by looking at the different types of instructions and their individual cycle counts and averaging
- ▶ The overall effective CPI varies by instruction mix
- ▶ A measure of the dynamic frequency of instructions across one or many programs



### EX-3: Using the Performance Equation

Computers A and B implement the same ISA. Computer A has a clock cycle time of 250 ps and an effective CPI of 2.0 for some program and computer B has a clock cycle time of 500 ps and an effective CPI of 1.2 for the same program. Which computer is faster and by how much?



# Basic Performance Equation

$$\text{CPU time} = \text{Instruction count} \times \text{CPI} \times \text{clock cycle}$$

$$\text{CPU time} = \frac{\text{Instruction count} \times \text{CPI}}{\text{clock rate}}$$

## Three key factors that affect performance

- ▶ Can measure the CPU execution time by running the program  
The clock rate is usually given Can measure overall instruction count by using profilers/ simulators without knowing all of the implementation details

CPI varies by instruction type and ISA implementation for which we must know the implementation details



# Determinates of CPU Performance

$$\text{CPU time} = \text{Instruction count} \times \text{CPI} \times \text{clock cycle}$$

	Instruction_count	CPI	clock_cycle
Algorithm			
Programming language			
Compiler			
ISA			
Core organization			
Technology			





# Determinates of CPU Performance

$$\text{CPU time} = \text{Instruction count} \times \text{CPI} \times \text{clock cycle}$$

	Instruction_count	CPI	clock_cycle
Algorithm	X	X	
Programming language	X	X	
Compiler	X	X	
ISA	X	X	X
Core organization		X	X
Technology			X



## EX-4

Op	Freq	CPI <sub>i</sub>	Freq x CPI <sub>i</sub>
ALU	50%	1	
Load	20%	5	
Store	10%	3	
Branch	20%	2	
			$\Sigma =$

- ▶ How much faster would the machine be if a better data cache reduced the average load time to 2 cycles?
- ▶ How does this compare with using branch prediction to shave a cycle off the branch time?
- ▶ What if two ALU instructions could be executed at once?



# Workloads and Benchmarks

## Benchmarks

A set of programs that form a “workload” specifically chosen to measure performance

- ▶ SPEC (System Performance Evaluation Cooperative) creates standard sets of benchmarks starting with SPEC89.
- ▶ The latest is SPEC CPU2006 which consists of 12 integer benchmarks (CINT2006) and 17 floating-point benchmarks (CFP2006).
- ▶ `www.spec.org`
- ▶ There are also benchmark collections for power workloads (SPECpower\_ssj2008), for mail workloads (SPECmail2008), for multimedia workloads (mediabench) ...



# SPEC CINT2006 on Barcelona (CC = $0.4 \times 10^9$ )

Name	ICx10 <sup>9</sup>	CPI	ExTime	RefTime	SPEC ratio
perl	2,1118	0.75	637	9,770	15.3
bzip2	2,389	0.85	817	9,650	11.8
gcc	1,050	1.72	724	8,050	11.1
mcf	336	10.00	1,345	9,120	6.8
go	1,658	1.09	721	10,490	14.6
hmmmer	2,783	0.80	890	9,330	10.5
sjeng	2,176	0.96	837	12,100	14.5
libquantum	1,623	1.61	1,047	20,720	19.8
h264avc	3,102	0.80	993	22,130	22.3
omnetpp	587	2.94	690	6,250	9.1
astar	1,082	1.79	773	7,020	9.1
xalancbmk	1,058	2.70	1,143	6,900	6.0
Geometric Mean					11.7



# Comparing and Summarizing Performance

## How to summarize performance with a **single** number?

- ▶ First the execution times are normalized given the “SPEC ratio” (bigger is faster, i.e., SPEC ratio is the inverse of execution time)
- ▶ SPEC ratios are “averaged” using the geometric mean (GM)

$$GM = n \cdot \sqrt[n]{\sum_{i=1}^n \text{SPEC ratio}_i}$$

## Guiding principle – reproducibility

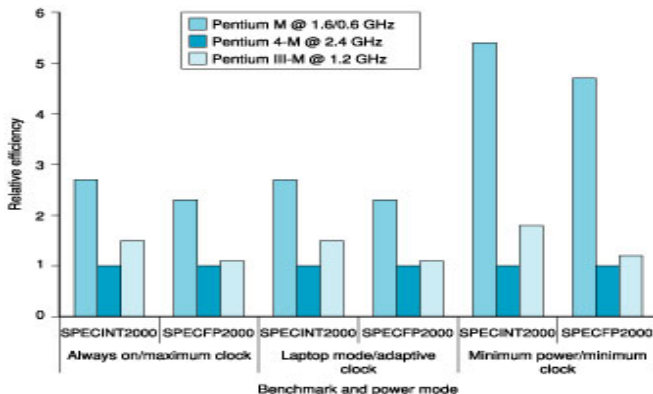
List everything another experimenter would need to duplicate the experiment: version of the operating system, compiler settings, input set used, specific computer configuration (clock rate, cache sizes and speed, memory size and speed, etc.)



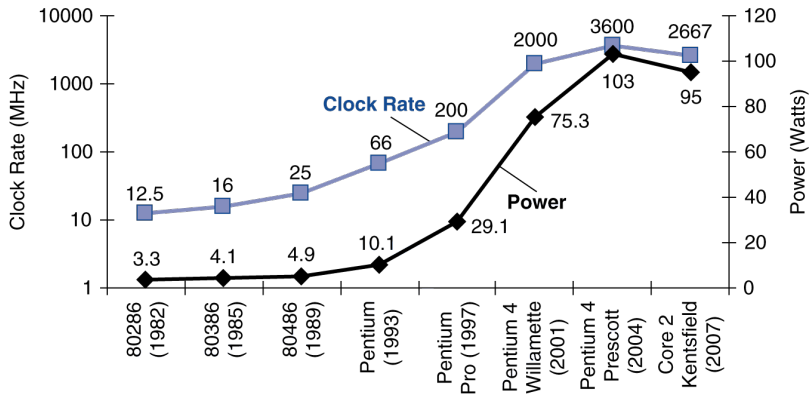
# Other Performance Metrics

## Power Consumption

- ▶ Especially in the embedded market where battery life is important
- ▶ For power-limited applications, the most important metric is energy efficiency



# Highest Clock Rate of Intel Processors



What if the exponential increase had kept up? Why not?

- ▶ Due to process improvements
- ▶ Deeper pipeline
- ▶ Circuit design techniques

