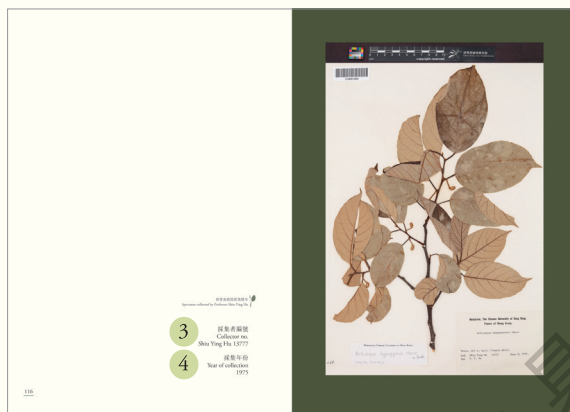




2 中文名稱  
Chinese Name

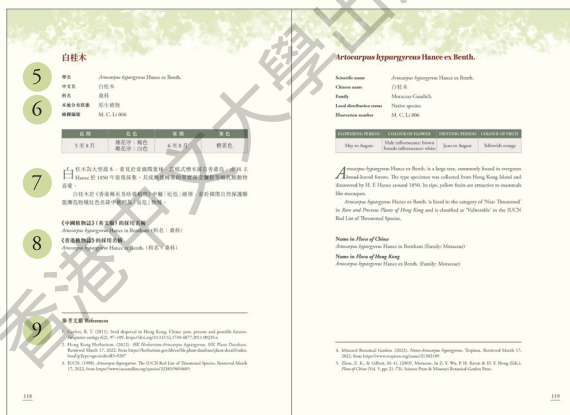
植物的常用中文名稱  
The common names of the plants in Chinese

II. 胡秀英教授採集的標本  
Specimen Collected by Professor Shiu-Ying Hu



- 3 採集者編號  
Collector no.
- 4 採集年份  
Year of collection

III. 植物簡介 Introduction of Plant Species



- 5 植物基本資料  
Basic information of plants
- 6 繪圖編號 (根據植物繪圖師的繪畫次序而編定)  
Illustration number (complying with the drawing sequence of the botanical illustrators)
- 7 內文描述  
Description

8 在《中國植物誌》與《香港植物誌》的名稱  
Names in *Flora of China* and *Flora of Hong Kong*

9 參考文獻  
References



#### IV. 植物繪圖 Botanical Illustration



10 展示植物結構  
Showing the plant structures

#### V. 植物繪圖圖解 Botanical Illustration with Annotations



11 展示「植物繪圖圖解」、「植物結構」、「參考標本」及「參考文獻」  
Showing 'Botanical Illustration with Annotations', 'Plant Structures', 'Reference Specimens' and 'References'

##### 植物的展示面向 Orientation of plant view

本圖鑑主要的展示面向為「正面觀」和「側面觀」，示意圖如下：

This illustrated book mainly shows the plant's frontal view and lateral view, as indicated here:



正面觀 Frontal view

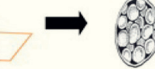
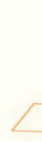


側面觀 Lateral view

##### 植物的解剖面向 Plant dissection

本圖鑑主要的解剖面向為「縱切面」及「橫切面」，以下是垂直或水平剖開雌蕊展示胚珠排列的示意圖：

This illustrated book mainly shows the longitudinal section and cross-section of dissection. The following diagram demonstrates the vertical and horizontal dissection of a pistil to show the arrangement of ovules:



縱切面 Longitudinal section

橫切面 Cross-section

## VI. 憑證標本 Voucher Specimen



- 12 展示科學繪圖主要對照的植物標本  
Showing the voucher specimen used to draw the scientific illustration

## VII. 植物結構與科學繪圖對照

### Comparison of Plant Structure to Scientific Illustration



- 13 展示所引用的植物結構以作科學繪圖之用  
Showing the plant structure used for each scientific illustration

李敏貞 Man-Ching Li

胡秀英植物標本館教研助理

Education Assistant, Shiu-Ying Hu Herbarium