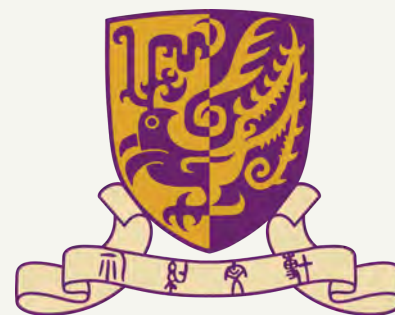


---

**A DISCIPLINE THAT  
HELPS YOU TO  
LOOK BEYOND  
COMMON SENSE**

---



# **SOCIOLOGY**

# **社會學系**

**THE CHINESE UNIVERSITY  
OF HONG KONG**  
香港中文大學



# INDEX 目錄

SUSTAINABLE  
DEVELOPMENT GOALS

See if you can spot the  
Sustainable Development Goals?

**1** OUR DEPARTMENT  
學系簡介

**2** WHAT IS SOCIOLOGY  
社會學是什麼

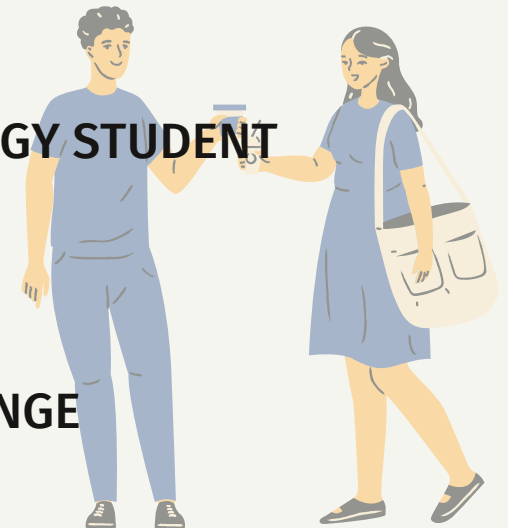
**4** COURSE FEATURES  
課程設計簡介

**10** LIFE OF SOCIOLOGY STUDENT  
校園生活

**13** STUDENT EXCHANGE  
交換生計劃

**15** OUR TEACHERS  
我們的老師

**21** Q&A  
常見問題



## 學系簡介

本系為香港各大專院校的社會學系中歷史最悠久，及課程最多元化的社會學系。由上世六十年代初期成立，至七十年代後期本系已培養出第一代本土社會學家，讓社會學在香港紮根。八十年代中國大陸改革開放時，本系教授在大陸重建社會學的過程中，扮演過重要的角色。在過去的三十年，本系致力提高研究水平，為學生提供優良的學術及專業研究訓練。

本系教學人員皆在其專業領域中有卓越成就，他們的研究涵蓋多個議題，包括中國及東南亞社會的分析，華人社會指標調查，醫療制度，教育制度，公民社會，社會網絡，犯罪學，流行文化，及珠三角地區研究等。

除了教研外，本系老師熱心參與各種社會公共事務，以其知識直接貢獻社會，參與的組織包括香港特別行政區政府中央政策研究組，平等機會委員會，廉政公署社區研究小組，接納愛滋病患者促進委員會，青年事務委員會，保安局禁毒處禁毒常務委員會研究諮詢小組，及戒毒治療及康復小組，香港學術及職業資歷評審局，以及樂施會等。

## Our Department

Our programme has the longest history and is the most comprehensive curriculum of any Sociology department in Hong Kong. Established in the early 1960s, the programme trained up the first generation of local social scientists and entrenched Sociology as a discipline in Hong Kong. In the 1980s, our professors also played an important role in reviving Sociology in mainland China. For the past 30 years, the programme has committed itself wholeheartedly to upgrading research standards and to providing students with excellent academic and professional social research training.

Members of our teaching staff excel in their fields of specialisation. Their research interests cover a wide range of areas, such as analysis of Chinese and other Asian societies, social indicators in Chinese societies, education institutions, civil society, social networks, criminology, popular culture etc.

Our teaching staff are enthusiastic participants in a range of social endeavours, using their knowledge to contribute to the community. They are involved in such organisations as the Central Policy Unit of the HKSAR Government, Equal Opportunities Commission, Community Research Subcommittee of the ICAC' Citizens Advisory Committee on Community Relations, the Committee on Promoting Acceptance of People Affected by HIV/AIDS, Commission on Youth, Research Advisory Group and Subcommittee on Treatment and Rehabilitation of the Narcotics Division, Hong Kong Council for Accreditation of Academic and Vocational Qualifications, and Oxfam.



系主任 Department Head  
**PROF. TAM TONY HONG WING**  
 譚康榮教授

## 社會學是什麼？

社會學旨在研究社會因素如何影響人類的思想及行為，與及因而產生的後果。社會學正如透視鏡，透過敏銳的理論視野和嚴謹的方法，嘗試找出事物真像。

「社會學是一門既富趣味性又很實用的學科，它的研究對象是我們身邊的人與事。由家庭，朋友到社區，國家以至世界，都是社會學探研的範圍。社會學強調以科學方法，客觀地探討及分析社會現象。這種以事實作基礎，富批判性的分析社會現象的能力，是社會學系同學過人之處。」

十九世紀社會學家涂爾幹（**Émile Durkheim**）定義社會學是一門「研究制度的科學」，旨在「研究各種社會制度，信念和行為模式以及其起源」。二十世紀五十年代的美國社會學家米爾斯（**C. Wright Mills**）認為每個人的生命歷程（**biography**）與其身處的社會，歷史結構是息息相關的，而提供這種理解人生的角度，為社會學的任務和承諾，並稱之為「社會學的想像力」（**sociological imagination**）。

簡單而言，社會學的想像力可以開拓我們理解事物的視野，從一粒沙看世界，將每天發生的日常問題，和宏觀的社會結構因素連結起來。

## What Is Sociology?

**SOCIOLOGY** is the study of how social factors influence people's minds and behaviour, as well as how social activities are organised. It helps you to understand a social phenomenon from multiple and unexpected perspectives.

**Sociology** is an interesting and practical discipline. It studies how people around us interact - hence - the social life between family members, friends and, in most cases, strangers. The subject of sociological exploration includes how different kind of social groups, organizations and institutions operate in the contemporary world. Sociologists investigate social phenomenon through their use of scientific research method. A crucial feature of sociology training is to equip students the ability to analyze social issues in critical sense.

As 19th Century sociologist **Émile Durkheim** put it, sociology is the scientific study of institutions, and how social beliefs and actions originated from them. To use your Sociological Imagination, a concept developed by sociologist **C. Wright Mills** in the 1950s, is to think about the connection between one's life, and the social structures and processes shaping it - that could only be found in certain moment in larger social and historical context.



**So, why are you reading this?  
How is this simple act possibly related to say,  
your parents' socioeconomic background?**

A photograph of a woman with long dark hair, wearing glasses and a dark dress, standing in profile and looking at a painting on a gallery wall. The painting depicts a woman in a red top and dark skirt standing in a park-like setting with a building in the background. The scene is dimly lit, with the gallery walls being a light grey color.

*Taste classifies,  
and it classifies the classifier.*

品味起著區分作用，  
而它也將分類者分類。

PIERRE BOURDIEU  
布迪厄

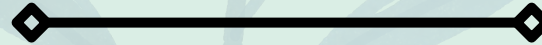
## SUSTAINABILITY AND DEVELOPMENT

Humanity is facing the greatest challenges in our era, like: climate change, poverty, inequality, pandemics, hungers and other developmental issues. Our Sociology Programme is well positioned to help you master the knowledge and method essential to study sustainable development. Up to two- third (67%) of our courses touch on one or more topics on Sustainable Development Goals adopted by the United Nations in 2015.

## DATA SCIENCE AND SOCIAL INQUIRY

Without doubt, scholars conducting contemporary social inquiry are benefiting from the data revolution. New computational tools are utilized to gather data from sources that scholars a few generations ago would not imagine before. Our Sociology Programme will open up a new career path for students who wish to learn introductory computational techniques to analyze large-scale data ranging from social media to digitised records.

## S - D - G - I SUMMARIZES KEY FEATURES AND NEW INITIATIVES OF THE SOCIOLOGY PROGRAMME



## GENDER AND DIVERSITY

The study of gender has a strong tradition in the Department of Sociology. Gender is a basic form of social organization that influence our everyday life in unnoticed ways - from exercising one's family roles, to making your JUPAS choices. Specifically, every one in four of our sociology courses (24.2%) will touch on issues related to Gender Equality, which is also the Fifth Sustainable Development Goal (5).

## INEQUALITY STUDIES

Sociologists are particularly interested in the study of inequality and stratification arising from development, from motherhood penalty in wage and income, to racial inequality or how class affects education outcome. These are key concerns of SDG 10 Reducing Inequality. Almost half (54.5%) of all our courses introduce empirical study of inequality and examine methods that may help to reduce them.

Sociology is the right place for you to study Sustainable Development and its solution.

66.7% or 2/3

of all sociology courses touch on one or more topics link to Sustainable Development Goals, of which:

SUB-THEME:



HOUSING



MIGRATION



EDUCATION



CRIME



30.3%

of courses explore poverty and its causes



24.2%

of courses examine gender issues



54.5%

of courses study inequality



21.2%

of courses address health and well-being



30.3%

of courses concern developmental issues



27.3%

of courses explore ways to make city more sustainable

A graphic of a circuit board with various components and lines, rendered in a light brown color, positioned behind the course title.

## SOCI3238 DIGITAL SOCIOLOGY

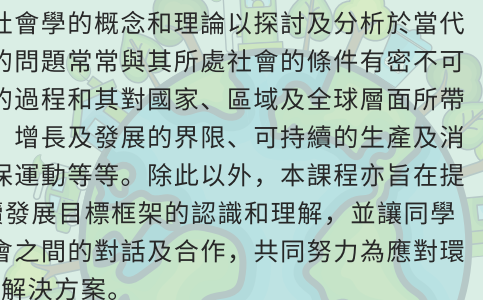
Changes in technology—specifically the transition from the analogue age to the digital age—request a new visit to longstanding sociological questions and a comprehensive approach to the epistemic, methodological and normative issues of computational social science as an emerging interdisciplinary field. This course introduces digital forms of research that advances theories of human behaviour by applying computational techniques to large-scale data from social media, dynamic networks, real-time digitised and administrative records, and social simulations. Students will be exposed to seminars and lab sessions that are designed to experiment with digital methods in order to imagine new ways of practicing sociology with technology.

隨著科技變化（特別是從模擬時代過渡到數位時代），社會學家正在重新檢視長期存在的社會學問題，並採取綜合方法去探討計算社會科學這新興跨學科領域當中，有關認識論，方法論和規範性等問題。本課程將會介紹數位化研究方法，通過將計算技術應用於來自社交媒體，動態網絡，實時數位化和行政記錄，以及社會模擬得出的大數據，來推進人類行為理論。課程將以研討會和實驗課為基礎，引領學生透過體驗數位研究方法，開啟應用技術實踐社會學的新想像空間。

## SOCI3239 ISSUES IN ENVIRONMENT AND SOCIETY

This course is designed to help students acquire fundamental knowledge and skills to examine and analyze the various environmental challenges in contemporary societies from a sociological perspective. Recognizing that environmental problems are often intricately connected with the conditions of societies that it is situated in, we will explore the processes underlying social and environmental changes as well as the consequences that those processes may entail at national, regional, and global levels.

Substantive topics to be covered include limits of growth and development, sustainable production and consumption, climate change and global governance, and environmental movement. The course also aims to promote an awareness and understanding of the Sustainable Development Goal (SDG) framework put forward by the United Nations in 2015 so as to facilitate a broader discussion and reflection on how individuals and societies can work together and find solutions to those environmental challenges.

A stylized graphic of a globe with a hand holding it from the bottom right. The globe is light blue and green, and the hand is light brown. The graphic is positioned behind the text on the right side of the page.

本課程旨在令同學了解及掌握如何運用社會學的概念和理論以探討及分析於當代社會的各種環境議題及挑戰。有關環境的問題常常與其所處社會的條件有密不可分的關係，我們會探討社會及環境轉變的過程和其對國家、區域及全球層面所帶來的影響。本課程將會討論的議題包括：增長及發展的界限、可持續的生產及消費模式、氣候變化及全球治理體系及環保運動等等。除此以外，本課程亦旨在提升同學對聯合國於2015年提倡的可持續發展目標框架的認識和理解，並讓同學進一步討論及反思，如何促進個人與社會之間的對話及合作，共同努力為應對環境挑戰尋找解決方案。



**Key Note:**

Students need to take a total of 18 units.

There are two subthemes:

(i) Society and Sustainability

(ii) Environment and Technology

**SOCIETY AND SUSTAINABILITY**

(At least 9 units, with 3 units must be either  
SOCI3002 Social Stratification or/and  
SOCI4204 Sociology of Education, and a  
maximum of 12 units)

-take at least 6 units of courses listed below:

Course Code:	Course Title:
SOCI 2116	Criminals and the Law
SOCI 2208	Urban Sociology
SOCI 2216	Social Problems in China
SOCI 2218	Marriage and Family
SOCI 3204	Sociology of Crime and Deviance
SOCI 3208	Gender and Society
SOCI 3227	Social Demography
SOCI 3237	Medical Sociology
SOCI 4202	Teaching Workshop for Sociology Students
SOCI 3230	Globalization and China
SOCI 4020	Graduation Thesis II
SOCI 4410 / 4420	Directed Studies I /II

**ENVIRONMENT AND TECHNOLOGY**

(At least 6 units, with 3 units must be  
SOCI3239 Issues in Environment , and a  
maximum of 9 units)

-take SOCI3239 Issues in Environment and  
Society (new course introduced in  
2021/2022), and;

-take either SOCI3238 Digital Sociology (  
new course introduced in 2021/2022)

or/and SOCI3102 Social Networks and  
Social Capital;

or/and SOCI4210 Science and  
Technology Studies.

**Key Note:**

- Students need to take a total of 15 units.
- There are three subthemes: (i) Quantitative Method ; (ii) Computational Method ; (iii) Community Social Analysis

**QUANTITATIVE METHOD**

- Take at least 6 units of courses listed below:

Course Code:	Course Title:
SOCI 2004	Social Statistics
SOCI 3229	Quantitative Data Analysis
SOCI 4201	Quantitative Method: Survey and Unconventional Data Types

**COMPUTATIONAL METHOD**

- Take at least 3 units of course listed below:

Course Code:	Course Title:
SOCI 3102	Social Networks and Social Capital
SOCI 3238	Digital Sociology

**COMMUNITY SOCIAL ANALYSIS**

- Take at least 9 units of courses listed below:

Course Code:	Course Title:
SOCI 2003	Social Research Methods
SOCI 3221	Introduction to Social Psychology
SOCI 3225	Research Writing (Writing for Sociology)
SOCI 3227	Social Demography
SOCI 3231	Qualitative Research
SOCI 3235	Social Interaction: Ethnomethodology and Conversation Analysis
SOCI 4020	Graduation Thesis II [a]
SOCI4410	Directed Studies I [b]

*Intersectionality draws attention to invisibilities that exist in feminism, in anti-racism, in class politics, so, obviously, it takes a lot of work to consistently challenge ourselves to be attentive to aspects of power that we don't ourselves experience*

交織性使人們注意到女權主義、反種族主義和階級政治中存在的隱形性。顯然，我們需要做更多，才能夠時刻挑戰自己關注己所沒有經歷過的權力層面的影響。

柏莉·坎秀

KIMBERLE CRENSHAW

## 社會學同學的校園生活



本年度我們社會學一年級的五個同學—Anny, Charlene, Cherlyn, Haley和Michelle受到社會學的啟發，組成了學生組織*Cirqual*，提倡性別平權及性別教育，在賽馬會青年社創行行動·創行社會創新大賽香港區域賽中奪得**最受歡迎項目獎**！



**CIRQUAL**  
A STUDENT ORGANISATION  
PROMOTING GENDER EQUALITY



This year, the project team, Cirqual, formed by our Year-1 sociology students, Anny Charlene, Haley, Michelle & Cherlyn, won the **Most Popular Project Award** in Enactus Hong Kong Regional Competition 2021.

They provide public gender education, sharing on sexual knowledge and offline events in align to Sustainable Development Goal 5 – Gender Equality.



## 社會學同學的校園生活



## 社會學同學的校園生活

I am Stephanie from New Asian College. I joined the NA sociology society when I was year 1. In my 2nd study year, i joined the local NGO named "Translate for Her". I did my NGO works using the knowledge and skills in contributing to the **ethnic minorities**.



Stephanie  
社會學系學生  
SOCIOLOGY  
STUDENT

我是新亞書院社會學系三年級生Stephanie。我在大學一年級時參加了自己書院的社會學系系會，成為內務副主席，服務一眾系會成員。而二年級生的暑假，我亦有幸加入 *Translate for Her* 為實習生，以社會學所賦予學生的知識，包括理論和處理數據技巧，為少數族裔社群出一分力。



至於來年的大學生涯，我計劃能參加大學的交流計劃，好好利用大學生的身分充實自己，拓闊視野。

In the future I would like to join the University exchange programme. I hope to grasp every opportunities to widen my horizon to the world.

CAMPUS LIFE OF  
SOCI STUDENTS



## 社會學同學的校園生活

Kelvin organised **Cantonese learning classes for refugees** through I-CARE Social Service Project Scheme during his 2nd year of study.

Kelvin曾與同學們透過參與I-CARE Social Service Project Scheme, 自發組織幫助難民的活動, 例如**教導難民廣東話**, 幫助他們融入本地社會。

Inspired by Sociology, Kelvin created various meaningful social impacts which received significant recognitions:

- **CUHK General Education Best Essay Award**
- **CUHK Convocation Outstanding Services and Creativity Student Award**
- **CUHK Outstanding Award**



### Kelvin 社會學系學生 SOCIOLOGY STUDENT



### CAMPUS LIFE OF SOCI STUDENTS



*The emotional magnets beneath home and workplace are in the process of being reversed. Work has become a form of 'home' and home has become 'work.'*

家庭和工作場所之間的情感磁鐵的兩極正在被逆轉。  
工作已成為「家」的一種形式，而家已成為「工作」。

霍克希爾德

ARLIE R. HOCHSCHILD

# 海外交換生計畫 STUDENT EXCHANGE PROGRAMME

## Canada 加拿大

The University of British Columbia  
英屬哥倫比亞大學  
University of Toronto  
多倫多大學

## USA 美國

Princeton University\*  
普林斯頓大學  
University of Pennsylvania  
賓夕凡尼亞大學  
American University  
美國大學  
The University of North Carolina  
at Greensboro  
北卡羅來納大學格林斯伯勒分校  
Soka University  
美國創價大學

## The United Kingdom 英國

Aston University  
阿斯頓大學  
University of Warwick\*\*  
華威大學  
University of Kent\*\*  
肯特大學

## Sweden 瑞典

Karlstad University  
卡爾斯塔德大學  
Stockholm University  
斯德哥爾摩大學

## Netherlands 荷蘭

Tilburg University  
蒂爾堡大學  
Utrecht University  
烏特勒支大學  
Maastricht University  
馬斯特里赫特大學

## Finland 芬蘭

University of Helsinki  
赫爾辛基大學

## France 法國

Université Jean Moulin Lyon 3  
尚慕蘭里昂第三大學

## Germany 德國

The Humboldt-Universität zu Berlin  
柏林洪堡大學

## Danmark 丹麥

University of Copenhagen  
哥本哈根大學

## Hungary 匈牙利

Eotvos Lorand University  
厄特沃什·羅蘭大學

## Taiwan 台灣

National Taiwan University  
國立臺灣大學

## South Korea 南韓

Ewha Womans University  
梨花女子大學

\*Research internship opportunities at Princeton University

\*\*Department Exchange Partnership





**DEPARTMENT EXCHANGE PARTNERSHIP:**  
University of Warwick  
University of kent

14



**DEPARTMENT SUMMER  
INTERNSHIP:**  
Princeton University



**Prof. TAM Tony Hong wing**

譚康榮教授

**Department Chair and  
Professor**

**PhD (University of Chicago)**

Area – social inequality;  
sociology of education;  
economic sociology



**Prof. WONG Suk-ying**

王淑英教授

**Professor**

**PhD (Stanford University)**

Area – sociology of education;  
comparative and historical  
sociology; institutionalism and  
social organizations; higher  
education



**Prof. CHOI Susanne Yuk-ping**

蔡玉萍教授

**Professor**

**DPhil (Oxford University)**

Area - gender; family;  
migration; sexuality



**Prof. TONG Yuying**

同鈺瑩教授

**Professor**

**PhD (University of North  
Carolina, Chapel Hill)**

Area – social demography;  
migration and immigration; family  
and life course; gender; population  
health and well-being



**Prof. ZHONG Sara Hua**

鍾華教授

**Associate Professor  
PhD (Pennsylvania State  
University)**

Area - crime and  
deviance; sociology of  
law; gender issues;  
development and society



**Prof. CHEUNG Nicole Wai-ting**

鄭慧婷教授

**Associate Professor  
PhD (The Chinese University  
of Hong Kong) Area - crime  
and deviance; substance  
abuse; gambling; youth and  
society; migration and  
adolescent health**



**Prof. JIN Lei**

金蕾教授

**Associate Professor  
PhD (University of Chicago)**

Area - medical sociology,  
social epidemiology, health  
services research,  
demography, sociology of  
professions, quantitative  
methods

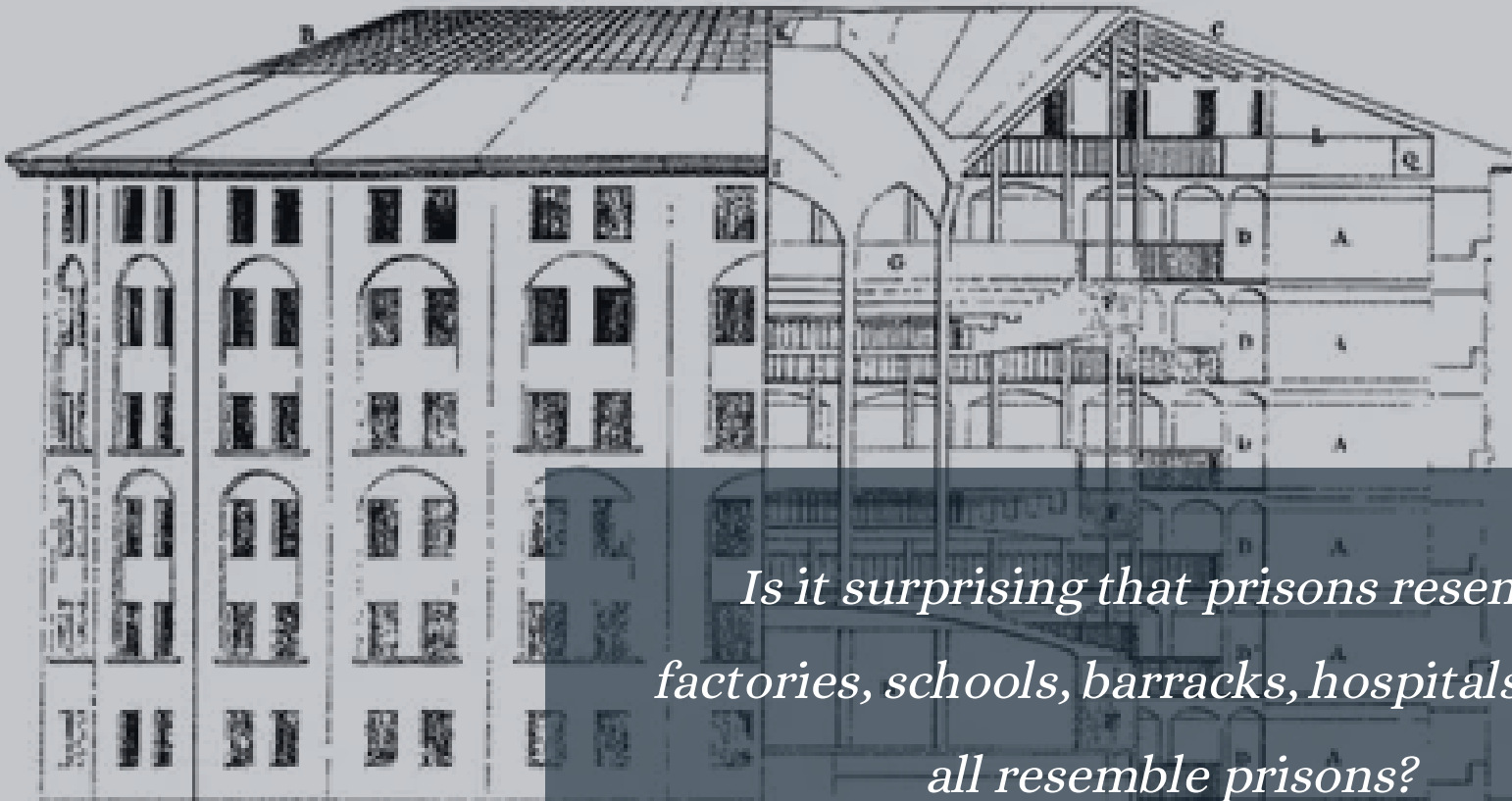


**Prof. ZHOU Xueguang**

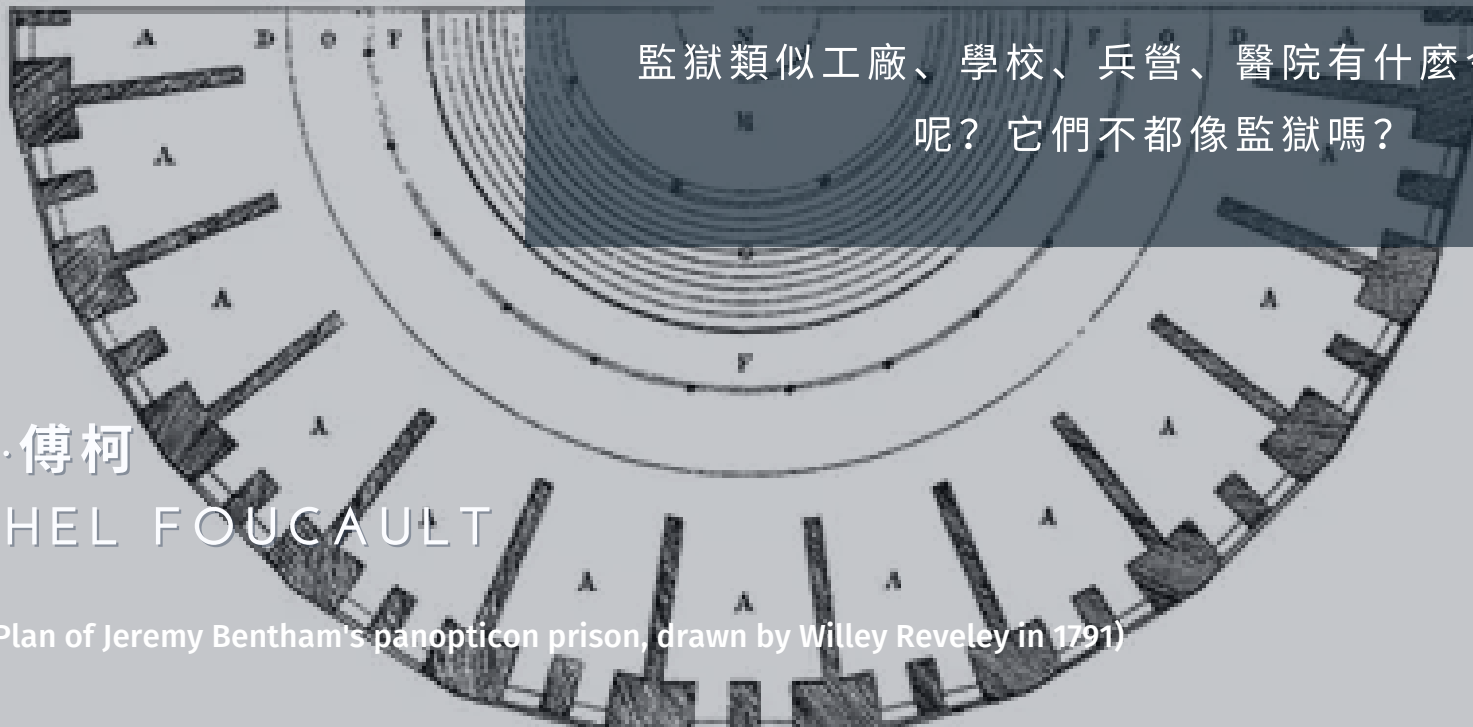
周雪光教授

**Distinguished Visiting  
Professor (Term 1, 2022-23)  
PhD (Stanford University)**

Area - Chinese Society;  
Economic Sociology;  
Organizations and Work;  
Social Inequality and  
Stratification



*Is it surprising that prisons resemble  
factories, schools, barracks, hospitals, which  
all resemble prisons?*



監獄類似工廠、學校、兵營、醫院有什麼令人吃驚的  
呢？它們不都像監獄嗎？

米舒·傅柯

MICHEL FOUCAULT

(Photo: Plan of Jeremy Bentham's panopticon prison, drawn by Willey Reveley in 1791)

**Prof. Jacob THOMAS**

唐龙教授

**Research Assistant Professor  
PhD (UCLA)**Area - international migration,  
inequality, sociology of law,  
tourism, mixed methods research,  
US-China relations**Prof. Mark COHEN****Assistant Professor****PhD (New York University)**Area - historical sociology and  
social change; politics,  
economics, and society; Japanese  
social history in comparative  
perspectives; social theory; urban  
sociology**Prof. SHEN Wensong**

沈文松教授

**Assistant Professor****PhD ( University of Pennsylvania)**Area - social stratification;  
education; health, family; children  
and youth; environment;  
contemporary China; quantitative  
methods**Prof. LEE Jaemin****Assistant Professor****PhD (Duke)**Area - social networks;  
computational social science;  
mathematical sociology; political  
sociology; management science**Prof. Zhu Ling**

朱靈教授

**Assistant Professor****PhD (Stanford University)**Area - social inequality and  
stratification; economic sociology;  
computational social science;  
Chinese society; organisations and  
work; political sociology;  
quantitative methods; social  
networks**Prof. HAN Siqi**

韓思齊教授

**Assistant Professor****PhD ( Ohio State University)**Area - social stratification;  
science, technology, and society;  
computational social science



**Dr. LAU Siu-lun**

劉紹麟博士

**Lecturer**

**Ph D (The Chinese University of Hong Kong)**  
Area - Hong Kong Society; sociology of religion



**Dr. LEE King-wa**

李勁華博士

**Lecturer**

**PhD (The University of Hong Kong)**  
Area - social problems and social policy;  
globalization and sustainable development;  
criminology



**Dr. HO Chris Ching-wai**

何政偉博士

**Lecturer**

**PhD (The Chinese University of Hong Kong)**  
Area - sociology of education; environmental  
sociology; contemporary China study



**STRATIFICATION & EDUCATION**



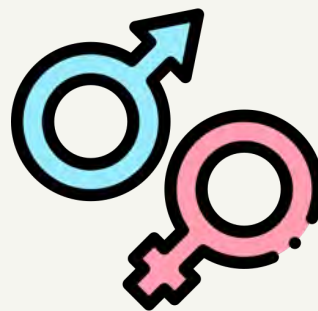
**POPULATION, HEALTH & MIGRATION**



**COMPUTATIONAL SOCIAL SCIENCE**



**CRIME & DEVIANCE**



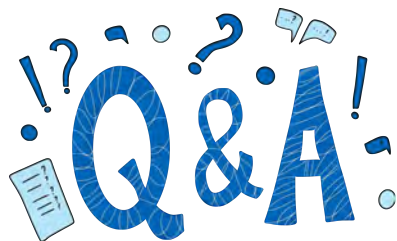
**FAMILY, GENDER & SEXUALITY**



**ECONOMY, POLITICS & SOCIETY**

# 常見問題

## Q&A SESSION (上)



我想入中大社會學系，中學修讀那些科目會更適合讀社會學呢？

社會學是一門主要以科學方法作研究，同時需結合對身處社會及歷史時空的想像的學科。對人文歷史涉獵較多的文科同學，在修讀古典社會學理論等科目時，可能因對社會的認知，而更易入手。同時，理科同學可能會發現之前的科學基礎訓練，令自己更容易掌握社會研究方法及社會統計等課程。我們的經驗是社會學同時適合文理科同學，最重要滿足你自己的學術興趣。

我對社會學很感興趣，除了成績計算有沒有方法增加入讀中大社會學系的機會呢？

有，例如「校長推薦計劃」。過去有不少同學透過計劃，獲得學系接見及有條件錄取。社會學作為研究自己身處社會的學科，同學若在校內外多有社會關懷及參與的經驗，或在進行各課外活動時有所體悟，將有較大的機會透過「校長推薦計劃」入讀中大社會學系。

中大社會學系有沒有獎學金？

社會學系每年頒發獎學金予多名成績特別優異的同學（詳情參閱 <http://www.soc.cuhk.edu.hk/undergraduate/awards-and-scholarships/>）

中大社會學系有沒有雙學位或雙主修？

有，我們有以下的雙學位或雙主修課程：

- 社會科學（社會學）學士及法律博士
- 法學學士學位及社會科學（社會學）
- 社會科學（社會學及新聞與傳播學）



## 在中大，其實我們需要修多少科呢？

只要自行安排課表得宜，

基本上每個學期修讀社會學約2-3個課程，就能依時畢業。

同學可以參考學習計畫表的建議中大本科學生的課程內容：

課程內容 Programme Curriculum (note: until 2021 only)			
課程組成部份 Component		學分 Unit	
社會學主要 核心課程 Sociology Major	必修科 Required	27	60
	選修科 Elective	33	
社會科學院課程 (必修) Social Science Faculty Package		9	
副修 (按個人意願選修) Minor (Optional)		18-30	
大學課程 (必須) University Core	語文	中文 Chinese	6
		英文 English	9
	通識教育 General Education		21
	資訊科技 Information Technology		1
	體育 Physical Education		2
其他選修科 Free Electives		剩餘學分 Remaining Unit	
總共 Total		畢業要求：123學分 At least 123 Units	

## 常見問題 Q&A SESSION (下)

社會學學生的建議學習計畫 (4年制)			
年份Year	Semester 1 上學期	Semester 2 下學期	主修學分 Major Unit
1	1 社會學院課程 1 Faculty Package Course SOCI 1001 SOCI 1002	1 社會學院課程 1 Faculty Package Course SOCI2104 1 / 2 Electives 選修科	18-21
2	SOCI 2003 1 Elective 選修科	SOCI 20034 SOCI 3003 1 Elective 選修科	15
3	SOCI 3223 1 / 2 Electives 選修科	SOCI 3231 2 / 3 Electives 選修科	18-21
4	SOCI 4010 1 / 2 Electives 選修科	SOCI 4020 1 / 2 Electives 選修科	12-15



## 面試機會

把中大社會學系列為JUPAS選擇的同學，很大可能於五月期間獲得面試面試結果有機會增加入讀機會。另外，本系將於七月JUPAS改選限期過後，再次抽取於JUPAS選擇中大社會學的同學，作另一次獨立的面試安排，而面試結果同樣有機會增加入讀機會。

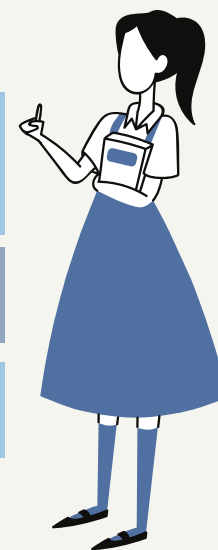
## 非聯招 (Non-JUPAS)

讀中大社會學系，除了聯招 (JUPAS) 外，可透過非聯招 (NON-JUPAS) 途徑。另外，中大社會學系每年均頒發獎學金予一位成績優異的非聯招入學生。

## 最低收生要求

首先，同學成績要達致中大最低收生要求。之後，中大社會學系將以最佳五科計算同學入學成績，當中以**英文 (1.5) 及通識 (1.5)** 所佔的比重較高。

Admission Grades of JUPAS Applicants (2021 Entry)			
Total Reference Score	Upper Quartile	Median	Lower Quartile
	24	23	22



---

**A DISCIPLINE THAT  
HELPS YOU TO  
LOOK BEYOND  
COMMON SENSE**

---



Website:  
<http://www.soc.cuhk.edu.hk/>

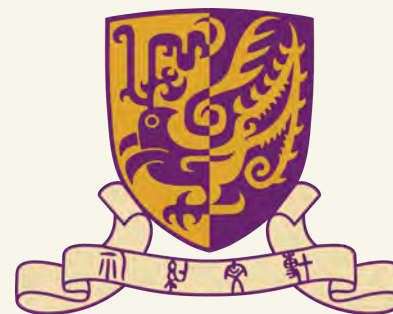


Facebook:  
[https://www.facebook.com/  
CUHKSociologyAdmission/](https://www.facebook.com/CUHK Sociology Admission/)



Twitter:  
<https://twitter.com/SociologyCUHK>

**BROCHURE DESIGNERS:  
SHIU CHEUK LAM, CHARLENE  
YU HEI MAN, HALEY**



# **SOCIOLOGY**

# **社會學系**

*Where Sociological  
Imagination Begins.*

## **CONTACT US**

## **聯絡我們**

+852 3943 6604 / +852 3943 6606  
[sociology@cuhk.edu.hk](mailto:sociology@cuhk.edu.hk)  
[www.soc.cuhk.edu.hk](http://www.soc.cuhk.edu.hk)

## **ADDRESS 地址**

Room 431, 4/F, Sino Building  
Department of Sociology, CUHK