



香港中文大學日本研究學部
Division of Japanese Studies
The Chinese University of Hong Kong

Master of Arts in Japanese Studies

(Part-time Mode)

2022-23

Information Session

Date : 22 January 2022 (Sat)

Time: 3pm – 4pm

**Speaker : Prof. Lynne Nakano,
Programme Director,
MA Programme in Japanese Studies**





Welcome!

We invite you to join the fascinating
world of Japanese Studies.



Questions you may want answered (1):

- Why was Japan able to become an economic superpower before other Asian countries?
- Japanese people seem extremely polite. How do we understand this behavior?
- How do levels of politeness in Japanese speech reflect actual relationships between people?



Questions you may want answered (2):

- When I meet Japanese people in a business or social setting, what are the proper things to do and say?
- When the earthquake and tsunami destroyed many towns and villages in northeastern Japan, why did the people seem so calm and accepting of the tragedy?



Questions you may want answered (3):

- How do Japanese people view China and their own society as China has overtaken Japan as the world's second largest economy?
- How does Japan sustain its edge in the creative industries, continuing to produce innovative products and software?

Do any of these questions interest you?

Would you like to take courses in which these questions are raised by experts in the field, and discussed by curious and eager classmates?

If yes, then this may be the program for you.



Expert & enthusiastic teaching staff

Professor NAKANO Lynne Yukie



- Ph.D. from Yale University in Anthropology
- Full Professor, Department Chair and MA Programme Director
- JASP5519 Tradition and Modernity in Contemporary Japan (core course)
- JASP5615 Anthropology of Japan
- JASP5700 Independent Research Project

Expert & enthusiastic teaching staff

Professor NG Wai Ming, Benjamin



- Ph.D. East Asian Studies, Princeton University
- Full Professor
- JASP5700 Independent Research Project

Expert & enthusiastic teaching staff

Professor HO Chi Ming



- Ph.D in Linguistics (University of Tsukuba, Japan, 2003)
- Deputy Chair, Associate Professor
- JASP5517 Communication Through Language and Culture (core course)

Expert & enthusiastic teaching staff

Professor GAGNÉ Nana Okura



- Ph.D. from Yale University in Anthropology
- JASP5601 - Theory and Methods in Japanese Studies (*core course*)
- JASP5621 - Japanese Management: Work, Culture, and Capitalism

Expert & enthusiastic teaching staff

Professor YELLEN Jeremy Ayrum



- Ph.D. from Harvard University in Japanese history
- JASP5060 - Special Topics in Japanese Studies: The Samurai in Japanese Culture
- JASP5060 - Special Topics in Japanese Studies: Japan & World War II in Asia
- JASP5611 - Japan's Modern Transformation, 1600-1945
- JASP5617 – History in Postwar Japan

Expert & enthusiastic teaching staff

Dr. Ueda Sanae



- Ph.D. in Language and Culture (Kyoto University of Foreign Studies, Japan)
- JASP5530 - Special Topics in Japanese Language: Japanese Dialectology
- JASP5530 - Special Topics in Japanese Language: Business Writing and Presentation

Expert & enthusiastic teaching staff

Dr. Lin Chaochun, Chalyn



- Ph.D., M.Phil. Japanese Studies, The Chinese University of Hong Kong
- JASP5060 - Special Topics in Japanese Studies: Pan-Asianism in Modern Japan
- JASP5614 – Japanese Literature in Historical Perspective
- JASP5618 - Contemporary Japan – China Relations

Expert & enthusiastic teaching staff

Dr. GUO Yingxia, Carol



- PH.D. Japanese Social and Cultural Science, Niigata University
- JASP5060 - Special Topics in Japanese Studies: Japanese-Chinese Translation (course title subject to amendment)

Learning Activities

- Lectures
- Small-group discussions
- Participate in cultural, social, and academic activities organized by the Division
- Academic talks, Workshops
- Academic lunch or student gatherings
- Study tour to Japan (non-mandatory, subject to the Division's final decision, varies year-to-year)

Occasional academic talks by visiting professors, special guests



Japanese table led by experienced language teacher
(subject to teachers' availability)

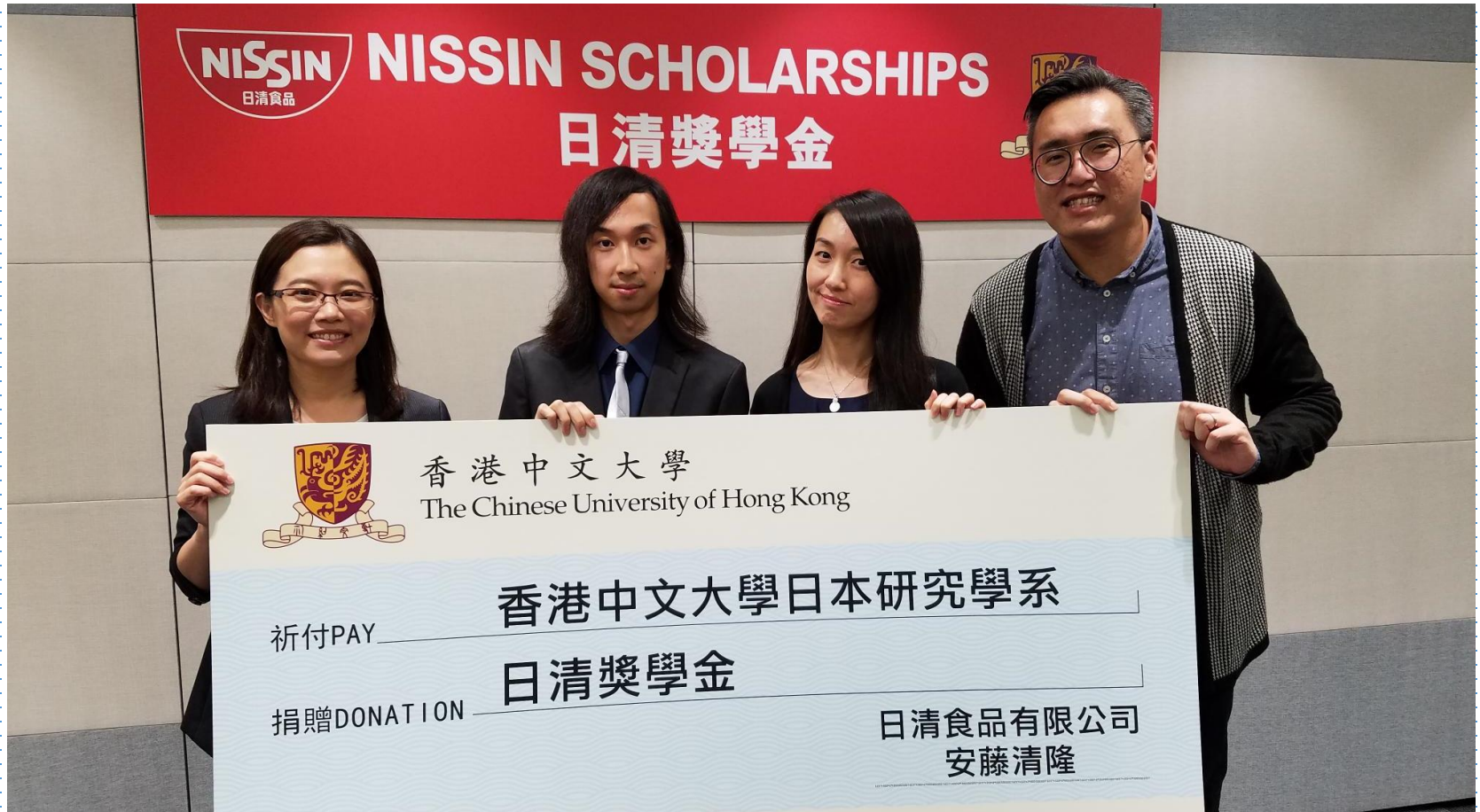


MA in Japanese Studies

Special activities: dinner with Japanese business leader



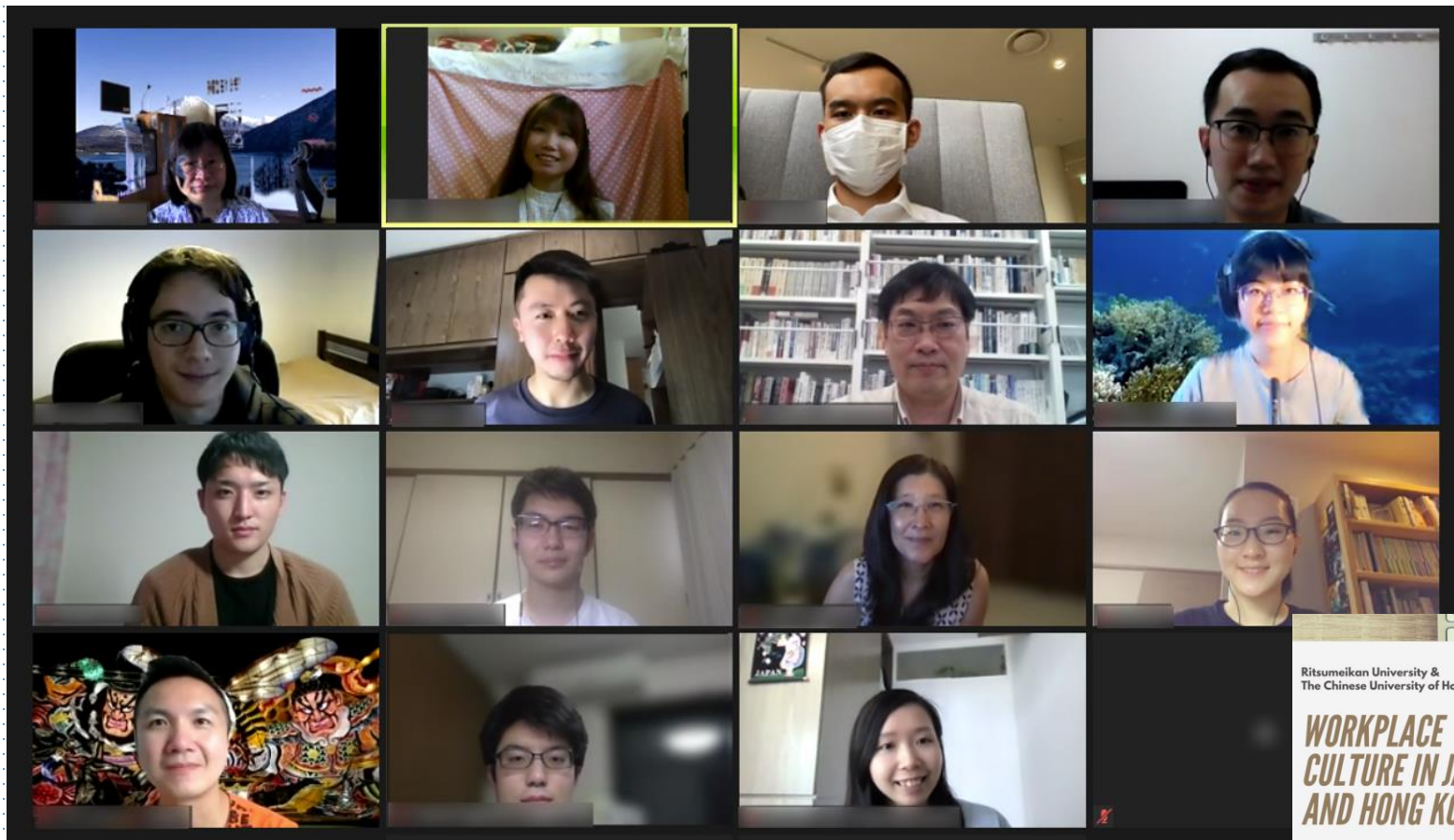
Nissin Scholarships (subject to offers from Nissin)



Gatherings with classmates and professors



Online Exchange Activities with Japanese Universities (during pandemic)



Ritsumeikan University &
The Chinese University of Hong Kong

**WORKPLACE
CULTURE IN JAPAN
AND HONG KONG**



May 22, 2021

15:00 (JST) | 14:00 (HKT) • Zoom

Scan the QR code and register now!



SCAN ME

MA in Japanese Studies

About MAJS Alumni

What are they doing after they graduated from MA Programme in Japanese Studies?

Cecilia Li

**2020 Global MBA, Doshisha Business School (Japan)
(MAJS Class of 2014)**



“Among various topics provided by MAJS, what impressed me most was Japanese people’s uniqueness in thinking, particularly in aesthetics. MAJS not only broadened my knowledge of Japanese culture, but also enchanted me with a lot of attractions of Japan to the extent that I went to Japan for further study.”

- Cecilia is currently working in a E-commerce company in Japan -

Dr. Samantha MA

Solicitor

Ph.D, University of Sheffield (UK) (2020)

(MAJS Class of 2014)

MAJS Teacher in 21-22 teaching International Relation of Japan



“The course not only enriched my knowledge of Japanese history and culture, but also let me come to know fellow classmates who come from diverse backgrounds while sharing the same interests in Japanese language and culture.

It is the course of international relations of Japan that I took from the MA class that inspired me to pursue a Ph.D studying the constitutional revision of Japan.”

Heidi Lee

PhD student, Waseda University (Japan)

(MAJS Class of 2019)



“MAJS Programme would definitely quench your thirst for knowledge of the country’s culture and traditions, and help you build a strong foundation in this area of study.

The professors’ research interests, academic backgrounds made the Department an ideal place for me to pursue my academic passion and prepare for further study.”

Learning Environment

- An engaging learning environment where we meet classmates with similar interests
- Topics are relevant to daily life in Hong Kong and will enhance the experience of dealing with Japanese people or traveling to Japan

Times and Venues

- Most classes are offered in classrooms close to the train station
- Courses are offered on weekday evenings (7pm to 9:30 pm) and on Saturdays (morning or afternoon sessions)

Access to CUHK libraries and resources

- Access to excellent resources and facilities offered by the Chinese University of Hong Kong
- CUHK libraries contain a world-class collection of Japanese Studies materials in Japanese, Chinese, and English

Workload

- Students are recommended to take two courses each semester
- Students should expect to spend approximately 3 hours per week to complete the readings of each course. More time would be required prior mid-term and final assessments.

Outcomes

- The Programme provides the tools to enhance student's ability to continue investigating Japan and understanding more of our own society
- Those who have daily interaction with Japanese people and travelling to Japan either for business or leisure, the Programme will foster a deeper understanding and appreciation of Japanese culture/history/language, in turns contributing a better rewarding experience in their career.

Courses offered in the Programme (1)

Core Course List

- JASP5517 Japanese Communication through Language and Culture
- JASP5519 Tradition and Modernity in Contemporary Japan
- JASP5601 Theory and Methods in Japanese Studies

Courses offered in the Programme (2)

Elective Courses List

- JASP5501 Teaching Japanese as a Second Language (N1 required)
- JASP5515 Japanese Linguistics (N2 required)
- JASP5522 Chinese-Japanese Interpretation (N1 required)
- JASP5611 Japan's Modern Transformation, 1600-1945
- JASP5612 Critical Analysis of Popular Culture
- JASP5613 Thematic Study of Japanese Film
- JASP5614 Japanese Literature in Historical Perspective
- JASP5615 Anthropology of Japan

Courses offered in the Programme (3)

Elective Courses List

- JASP5617 History of Postwar Japan
- JASP5618 Contemporary Japan - China Relations
- JASP5619 Philosophy in Japanese Culture
- JASP5620 Japanese Cultural Identity
- JASP5621 Japanese Management: Work, Culture, and Capitalism
- JASP5060 Special Topics in Japanese Studies*
- JASP5530 Special Topics in Japanese Language*
- JASP5700 Independent Research Project

*Special Topics subjects encompass an array of Japanese related study fields and the topics varies from year to year

Admission Requirements

- All applicants shall have obtained *a Bachelor's degree from a recognized university normally with honors not lower than Second Class*
- English Language Proficiency:

All applicants should fulfill the English Language Proficiency Requirement prescribed below:

- A pass in HKALE; or
- Achieve level 4 or above in the HKDSE; or
- A degree obtained from a university in HK or an English speaking country; or
- One of the following scores : TOEFL, IELTS, GMAT

Graduation Requirements

- Students are required:
 - *To complete and pass 24 units of courses offered by this programme with at least 3 units selected from the core course list*
 - To achieve a ***minimum cumulative GPA of 2.0***
 - If a student fails a course, he/she must enroll in an additional 3-unit course and receive a passing grade in order to complete the degree. A supplementary course fee is applied.

Duration of Study

- Normative Study Period : 2 Years
- Maximum Study Period : 4 Years

Programme Tuition Fee

- *HK\$121,000 to be settled in 4 installments*
- Year 1 (HK\$60,500 for 2 Terms)
- Year 2 (HK\$60,500 for 2 Terms)
- Students are expected to complete the Programme in *two years*.
- Any course/s taken beyond this two-year period will be charged on a per course basis (HK\$15,126 per course)

Continuing Education Fund (CEF) reimbursable

- The programme has been included in the list of reimbursable courses under the Continuing Education Fund.
- HK residents can then reimburse up to HK\$20,000 MAX subsidy in his/her lifetime for continuing study purpose, with conditions that they get at least D grade for each course, and achieve at least 70% attendance in classes for all the courses they took in the programme
- For eligibility and reimbursement procedure of CEF, please refer to <https://www.wfsfaa.gov.hk/cef>

Precautionary measures in the classroom

- Amid pandemic, all students are strictly required to follow the *Guidelines for Precautionary Measures for Face-to-Face Meetings* as advised by the Registration and Examinations Section, Registry (RES) , CUHK, on any classroom activities.
- The Guidelines are available at RES website.



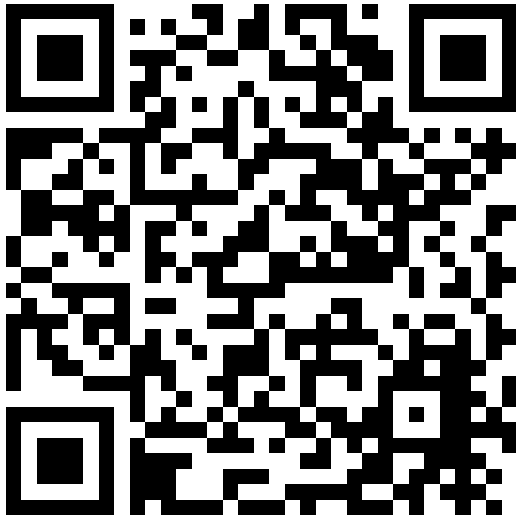
Guidelines for Precautionary Measures

Please submit your application online
at CUHK Graduate School's website :
<https://www.gs.cuhk.edu.hk/admissions/programme/arts>

Application Deadlines

- 2nd Round 4 Feb 2022
- 3rd Round 31 Mar 2022

We welcome your application !



Admission online



MA in Japanese Studies
Programme Information

- Thank you -