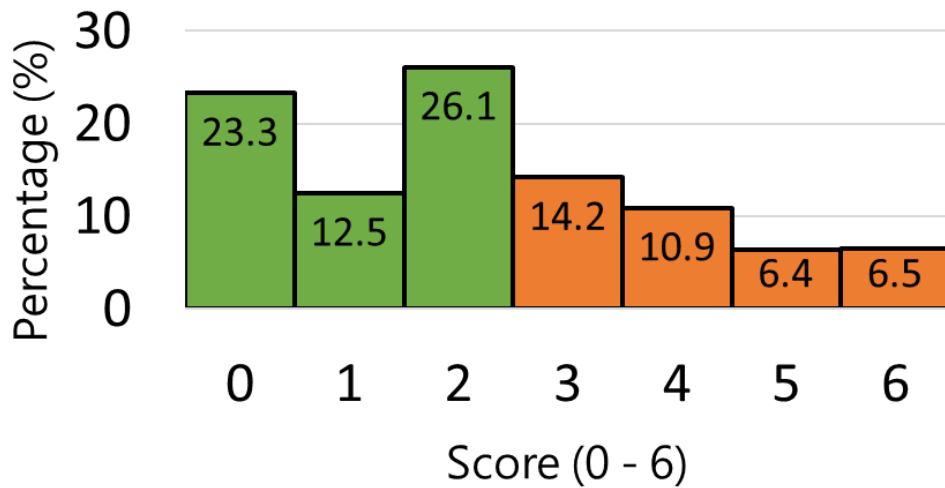


Patient Health Questionnaire-2 (PHQ-2)

Depressive Symptoms



Depressive Symptom Prevalence

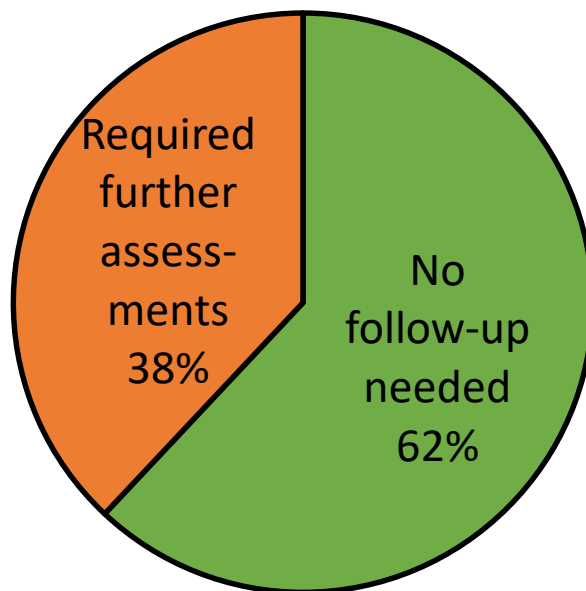


Table 1

Score distribution of the Patient Health Questionnaire-2 (PHQ-2). People who scored 3 or above (in orange; 38% of the respondents) should seek professional diagnosis on their psychological health conditions (Gilbody, Richards, Brealey, & Hweitt, 2007).

| | Anti-ELAB Supporters' emotional reactions towards the following groups (Score: 0 - 4) | | | | Police Supporters' emotional reactions towards the following groups (Score: 0 - 4) | | | |
|-----|---|-------|-------------------|-----------|--|-------|-------------------|-----------|
| | Negative emotions | | Positive emotions | | Negative emotions | | Positive emotions | |
| | Shame | Anger | Pride | Gratitude | Shame | Anger | Pride | Gratitude |
| PRN | 0.30 | 0.41 | 3.00 | 3.31 | 1.85 | 1.94 | 0.66 | 0.72 |
| FLP | 0.24 | 0.41 | 2.73 | 3.26 | 2.91 | 3.32 | 0.01 | 0.02 |
| GOV | 3.52 | 3.67 | 0.05 | 0.08 | 1.57 | 1.68 | 0.72 | 1.18 |
| POF | 3.47 | 3.69 | 0.04 | 0.10 | 0.19 | 0.22 | 2.42 | 2.84 |
| PEA | 3.32 | 3.45 | 0.01 | 0.08 | 0.47 | 0.42 | 1.70 | 1.84 |

Table 2

Anti-ELAB Supporters' and Police Supporters' average emotional reactions towards different social groups. Darker cells represent more intense emotional reactions.

Emotional intensity scale: 0 = Not at all, 1 = A bit, 2 = Moderately, 3 = Strongly, 4 = Very strongly.

PRN = "Peaceful, rational, and non-violent protestors" refers to people who insist on using peaceful, rational, and non-violent means (e.g., parade and assembly, posting slogans) to voice their opinions in anti-ELAB-related demonstrations.

FLP = "Frontline protestors" refers to people who use comparatively radical means (e.g., setting up roadblocks, physically clashing with law enforcement officers) to voice their opinions in anti-ELAB-related demonstrations.

GOV = "Hong Kong Government" refers to Hong Kong government principal officials, such as Chief Executive, Chief Secretaries, and leaders of Bureaux.

POF = "Hong Kong Police Force" (HKPF) refers to all law enforcement officers in HKPF, such as riot police, police public relations branch, and tactical squad officers.

PEA = "Pro-establishment Activists" refers to people who are discontented with demonstrations related to the anti-ELAB movement and perform counter-protest behaviors (e.g., attending assemblies in support of the police, deterring protestors from posting slogans).

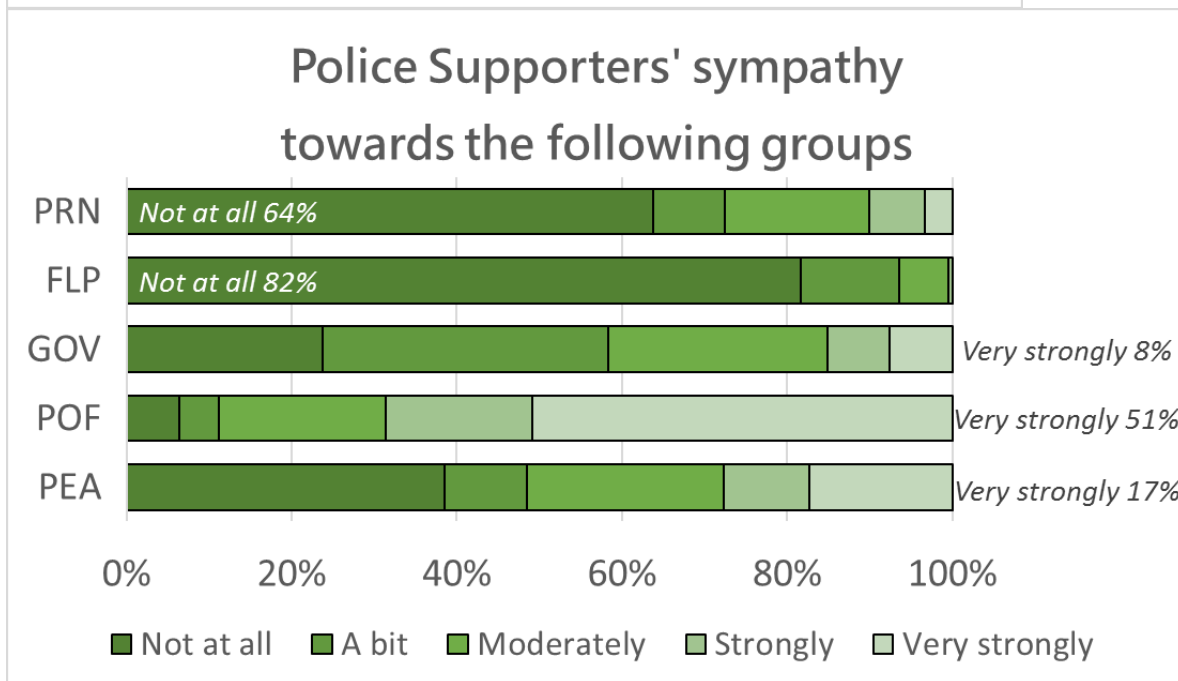
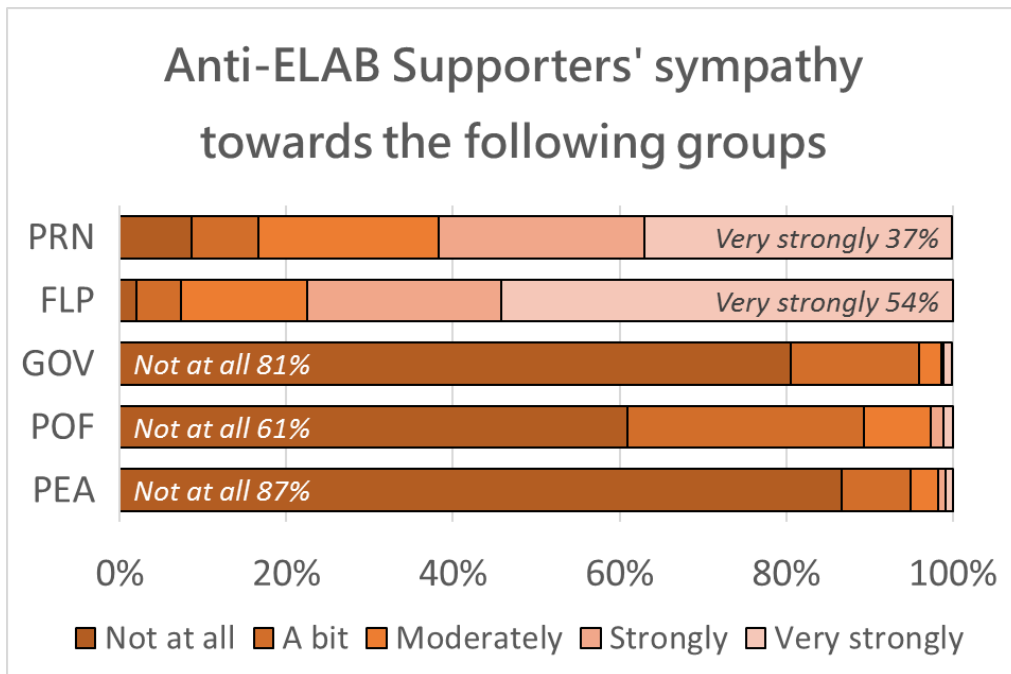


Table 3

Anti-ELAB Supporters' (in orange) and Police Supporters' (in green) sympathy towards different social groups. Sympathy intensity scale: 0 = Not at all, 1 = A bit, 2 = Moderately, 3 = Strongly, 4 = Very strongly.

PRN = "Peaceful, rational, and non-violent protestors"

FLP = "Frontline protestors"

GOV = "Hong Kong Government"

POF = "Hong Kong Police Force"

PEA = "Pro-establishment Activists"

"Should (social groups) be treated as animals (e.g., cockroaches, dogs)?"

— Individual averages

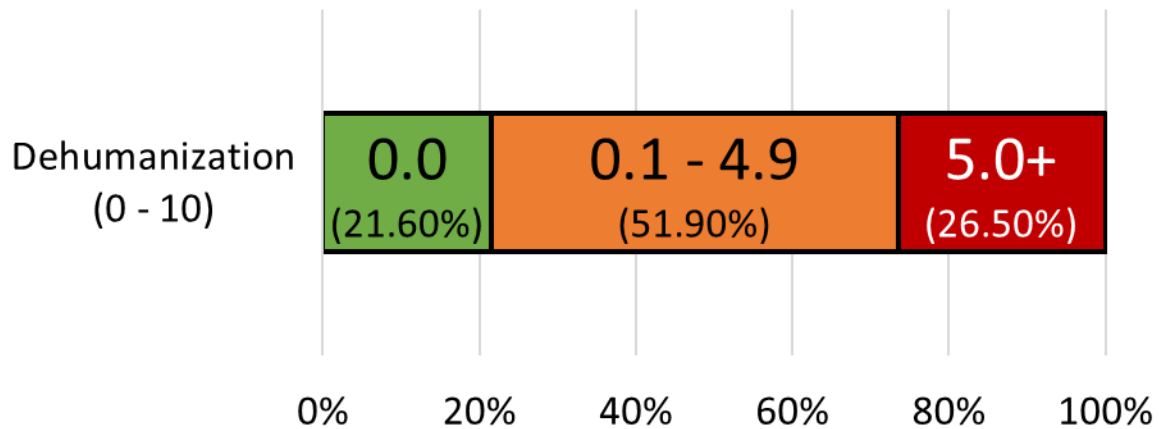


Table 4

Question: "Should (social groups) be treated as animals (e.g., cockroaches, dogs)?"
0 = Absolutely should not, 10 = Absolutely should. Each respondent's dehumanization index is the average scores on "Peaceful, rational, and non-violent protestors," "Frontline protestors," "Hong Kong Government," "Hong Kong Police Force," and "Pro-establishment activists." Indices of 0 (in green, 21.6% of the respondents) represent respondents showing completely no dehumanization tendency towards any of the social groups.