

MY NEW PAGE

AT

CU

MEDICINE

2022/23

Faculty of Medicine The Chinese University of Hong Kong

📍 Student Affairs Team, G/F, Choh-Ming Li Basic Medical Sciences Building,
The Chinese University of Hong Kong, Shatin, Hong Kong

☎ (852) 3943 9243 / 3943 6891

☎ (852) 2603 7997

@ faculty@med.cuhk.edu.hk

🌐 <https://www.med.cuhk.edu.hk/>

f CUHKMedicine

@ cuhkmed_sa

🐦 CUHKMedicine

Information as of Oct 2021, unless otherwise specified.

Disclaimer: The information provided in this booklet is for reference only. CU Medicine reserves the rights to revise, update, or modify the information without prior notice. Under no circumstances will CU Medicine be held responsible or liable for any claims, damages, losses, or liabilities whatsoever resulting directly or indirectly from any use or misuse of or reliance on any information in this booklet.

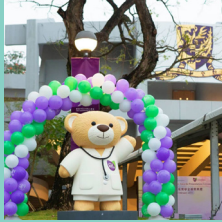


香港中文大學
The Chinese University of Hong Kong



學 醫

其實也是學做人。



Contents

- 02** CUHK & CU Medicine
- 04** 40th Anniversary
- 06** Dean's Message
- 07** Associate Dean's Message
- 08** Colleges
- 18** MBChB & GPS
- 20** Admissions
- 24** Learning Journey
- 26** Teaching Facilities
- 34** Exchange & Clinical Attachment
- 36** Awards & Scholarships
- 38** Research Excellence 2020-2021
- 42** Outstanding Medical Alumni
- 44** Appendix 1 – Transportation Guide
- 45** Appendix 2 – Location Map



The Chinese University of Hong Kong (CUHK)



Motto

博文約禮

Through learning and temperance to virtue.

Emblem

The emblem of the University is the mythical Chinese bird *feng* (鳳) which has been regarded as the Bird of the South since the Han dynasty. It is a symbol of nobility, beauty, loyalty and majesty. The University colours are purple and gold, representing devotion and loyalty, and perseverance and resolution, respectively.

Mission

To assist in the preservation, creation, application and dissemination of knowledge by teaching, research and public service in a comprehensive range of disciplines, thereby serving the needs and enhancing the well-being of the citizens of Hong Kong, China as a whole, and the wider world community.

Vision

To be acknowledged locally, nationally and internationally as a first-class comprehensive research university whose bilingual and multicultural dimensions of student education, scholarly output and contribution to the community consistently meet standards of excellence.

CU Medicine

History

Established in 1981, the **Faculty of Medicine** has flourished and grown over the years, adding different schools of various disciplines and churning out groundbreaking medical discoveries as well as graduates of exceptional

talents who have put it on par with its international and local counterparts. The Faculty has been ranked as one of the top 40 medical schools in the world in less than 40 years.

Logo

Two overlapping purple and green apricot leaves have come to represent the Faculty of Medicine since 2013. Apricot trees have long been used to embody the medical profession. While purple is the Faculty's signature colour,

green symbolizes youth and vigour. Mimicking the leaf veins, the Chinese characters of *CUHK* (中大) are embossed on the apricot leaf.



Chinese characters of *CUHK* (中大) are masked in the contours of the leaf veins



The colour green symbolizes youth and vigour of the Faculty

Purple is the Faculty's signature colour



40 years of

Succession · Innovation · Dedication



The year 2021 marks the **Ruby Jubilee of CU Medicine**. Since our humble beginnings 40 years ago, CU Medicine has thrived to become one of the world's top 40 medical schools, serving as a hub of talented students, physicians and scientists who are committed to making a difference and having a positive impact on healthcare.

More celebration events:



Photo courtesy: Information Services Office and Communication and Public Relations Office, CUHK

Dean's Message

“

Despite a history of 40 years only, we are proud to be among the top medical institutions in the world. This exemplifies that our efforts in education, research and clinical service have borne fruits. If you aspire to become a doctor with benevolent heart and mind, or to explore the world of medical science with world-renowned clinician-scientists, CU Medicine is the right choice for you. I look forward to seeing you on CUHK campus next September.

”



Prof. CHAN Ka Leung, Francis
MBChB (Hons) (CUHK), MD (CUHK), DSc (CUHK),
FRCP (Lond), FRCP (Edin), FRCP (Irel)

**Dean
Faculty of Medicine**

Associate Dean (Student Affairs)'s Message

“

CU Medicine is dedicated to offering a personalised learning experience with diverse opportunities to our students. Our MBChB programme and Global Physician-Leadership Stream (GPS) are known to adopt a student-centred approach that empowers students to take charge of their own education and go for their passion. While we take pride in our students' scholarly achievement, our student's well-being is highly valued as well. We believe in teamwork as much as individual talents. We work together to nurture our students prudently, and support them in academic as well as personal level. On behalf of CU Medicine, we cordially invite you to join our big family.

”



Prof. NG Siu Man, Simon
MBChB (Hons) (CUHK), MD (CUHK), FRCS (Edin),
FCSHK, FRCSEd (Gen), FHKAM (Surgery)

**Associate Dean (Student Affairs)
GPS Director
Faculty of Medicine**

Colleges



Admission Scholarships

JUPAS Students

Freshmen with Level 5** in 3 subjects or above can receive an award on top of the CUHK admission scholarship and guaranteed hostel place for 2 - 4 years.

More information: <http://cc.cuhk.edu.hk/admission/zh/homepage-zh/>

Non-JUPAS Students

Freshmen with CUHK's full-tuition Admission Scholarships can additionally receive a subsidy of HK\$40,000 for participating in extra-curricular activities.

Selection Criteria for Other Admission Scholarships

Outstanding performance in Art and Music, Sports, Science and Technology.



Chung Chi College

Founded in:
1951

College Motto:
In Pursuit of Excellence



Hostel Life

10
buildings

1,400+
places

1-year
residence scheme

Hostel Selection Criteria

- 1) District of residence
- 2) Type of residence
- 3) Others
(e.g. participation in college student activities/student bodies)



New Asia College

Founded in:
1949

College Motto:
Sincerity and Intelligence



Hostel Life

4
buildings

1,186
places

1-year
residence scheme

Hostel Selection Criteria

- 1) District of residence
- 2) Type of residence
- 3) Extra-curricular activities
- 4) Special quotas
(e.g. nomination, president of college student bodies)



Admission Scholarships

JUPAS Students

Freshmen with Level 5** in 3 subjects or above can receive scholarship.

Freshmen with Level 5** in 5 subjects or above can additionally receive free hostel place (renewable).

Non-JUPAS Students

Freshmen with outstanding admission results may receive scholarship.

Selection Criteria for Other Scholarships

Freshmen with outstanding admission results and active participation in activities or services are also eligible for other College scholarships.



United College

Founded in:
1956

College Motto:
Make One's Virtues Shine
and Renew the People



Admission Scholarships

JUPAS Students

Freshmen with Level 5** in 3 subjects or above can receive scholarship.

Freshmen with Level 5** in 5 subjects or above can receive renewable scholarship, and additionally receive guaranteed hostel place and full-hostel fee scholarship.

Non-JUPAS Students

Local freshmen who have fulfilled University Admission Scholarships requirement can receive renewable full-tuition scholarship, guaranteed hostel place and full-hostel fee scholarship.

Selection Criteria for Other Admission Scholarships

- 1) Outstanding performance or contributions in GOAL programme
- 2) Freshmen as the first generation in the family to pursue tertiary education at United College

*The admission scholarships are subject to quota and conditions. Please visit the College website for details and latest information.

Hostel Life

4
buildings

1,288
places

1-year
residence scheme

Hostel Selection Criteria

- 1) District of residence
- 2) Home environment
- 3) Extra-curricular activities



Shaw College

Founded in:
1986

College Motto:
Learning, Innovation and
Benefitting Mankind



Hostel Life

2
buildings

1,211
places

1-year
residence scheme

Hostel Selection Criteria

- 1) District of residence
- 2) Type of residence and activity area
- 3) Extra-curricular activities



Admission Scholarships

JUPAS Students*

On top of the CUHK Admission Scholarships, freshmen with Level 5** in 3 subjects or above can receive scholarship up to HK\$25,000.

Non-JUPAS Students*

Local freshmen receiving CUHK half-tuition non-renewable admission scholarships or above can receive top-up scholarship up to HK\$25,000.

*Outstanding JUPAS and Non-JUPAS local freshmen can additionally receive International Exposure/ Exchange Scholarships & Awards in the amount of HK\$10,000 and free hostel place for 1- 2 years.

More information: https://www.shaw.cuhk.edu.hk/sites/default/files/share/files/college_life/leaflet_admission_scholarships_e.pdf

Selection Criteria for Other Scholarships for First-year Students:

- 1) Special skills or talents
- 2) Financial need



Morningside College

Founded in:
2006

College Motto:
Scholarship, Virtue,
Service



Admission Scholarships

Provide admission scholarships to freshmen with outstanding academic achievements to cover their hostel and/or meal fees.

College Selection Criteria

- 1) Academic background
- 2) Non-academic interests and pursuits
- 3) Core values
- 4) Interview

Hostel Life



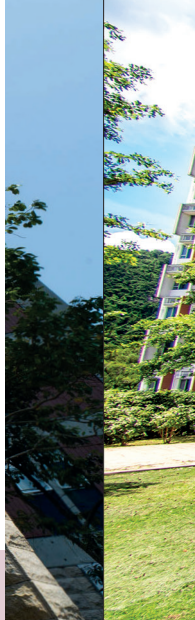
2
buildings



300
places

Full Residence & Communal Dining

residence scheme



S.H. Ho College

Founded in:
2006

College Motto:
Culture, Morals,
Devotion, Trustworthiness



Hostel Life



2
buildings



600
places

Full Residence & Communal Dining

residence scheme



Admission Scholarships

Medical students with outstanding academic results and talents will be eligible for a number of scholarships amounted up to HK\$600,000.

College Selection Criteria

- 1) Personal qualities
- 2) Talents and achievements
- 3) Academic performance



C.W. Chu College

Founded in:
2007

College Motto:
Cultus et Beneficentia



Admission Scholarships

25 admission scholarships will be offered to the entering class, and other scholarships will also be awarded in later years to recognize merit and creativity and to support exchanges.

College Selection Criteria

The College admits no more than 75 students each year, including exchange students, nearly 35% of students will be from outside Hong Kong.

Hostel Life



3
buildings



302
places

Full Residence & Communal Dining

residence scheme



Wu Yee Sun College

Founded in:
2007

College Motto:
Scholarship and
Perseverance



Hostel Life



1
buildings



604
places



1-year
residence scheme



Admission Scholarships[^]

College Admission Scholarships ranging from HK\$10,000-\$20,000.

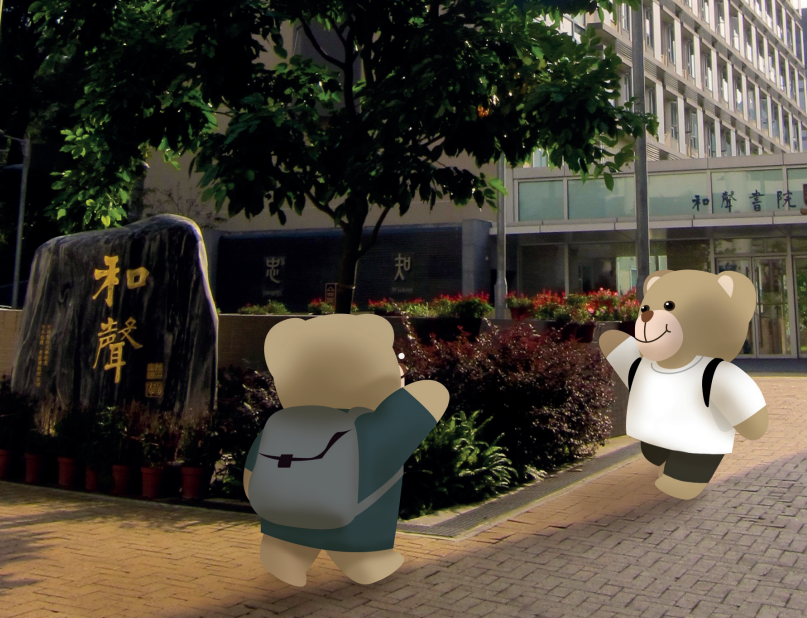
Freshmen with Level 5** in 4 subjects or above in HKDSE or non-JUPAS freshmen receiving CUHK's full-tuition scholarship can receive guaranteed hostel place for 2 years of study and Exchange Scholarship of HK\$10,000*.

*The admission package is eligible for students who placed Wu Yee Sun College as their first choice in College affiliation.

[^]The admission scholarships are subject to change. Please visit the College website for the latest information.

Hostel Selection Criteria

- 1) Total travelling time
- 2) Living area per capita
- 3) Extra-curricular activities (for non-freshmen only)



Lee Woo Sing College

Founded in:
2007

College Motto:
Wisdom, Humanity,
Integrity, Harmony



Hostel Life



1
buildings



640
places

**Full residence
(8 terms,
except summer
residence)
for GPS students**
residence scheme

Admission Scholarships

Students with outstanding performance can receive a full range of scholarships and special prizes. There were 21 admission scholarship* awards (range from HK\$10,000 to one-year full tuition) worth about HK\$1 million offered in 2020/21.

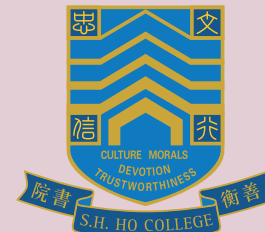
*The admission scholarships are eligible for students who placed Lee Woo Sing College as their first choice in College affiliation.

Hostel Selection Criteria

- 1) Traveling time from home to MTR University Station by public transportation
- 2) Average actual household activity area
- 3) Participation in student activities at the College/University



晨興書院
MORNINGSIDE COLLEGE



伍宜孫書院
WU YEE SUN COLLEGE



MBChB

Personalised MBChB Programme

Bachelor of Medicine and Bachelor of Surgery
A "PERSONALISED" Medical Curriculum
Designed to Empower YOU

Interdisciplinary
Study Plan



Community Service &
Humanitarian Action



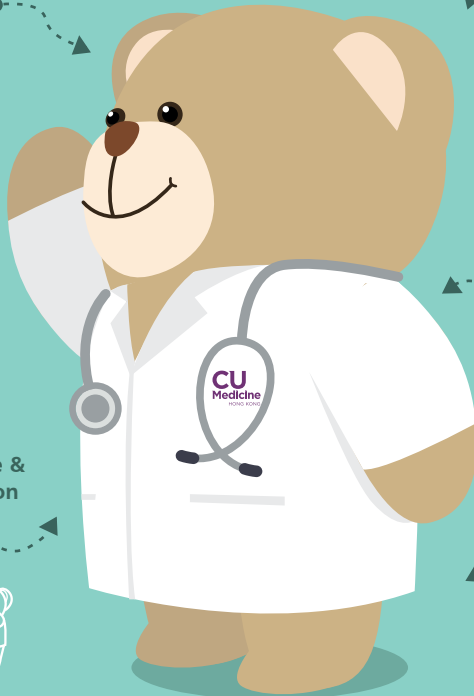
Self-initiated
Intercalated Year(s)



Student Exchange



Vibrant Student &
College Life



GPS

Global Physician-Leadership Stream

Asia's FIRST Undergraduate Medical Leadership Programme
for Tomorrow's Physician-Leaders

Leadership Workshop



Enhanced Mentorship



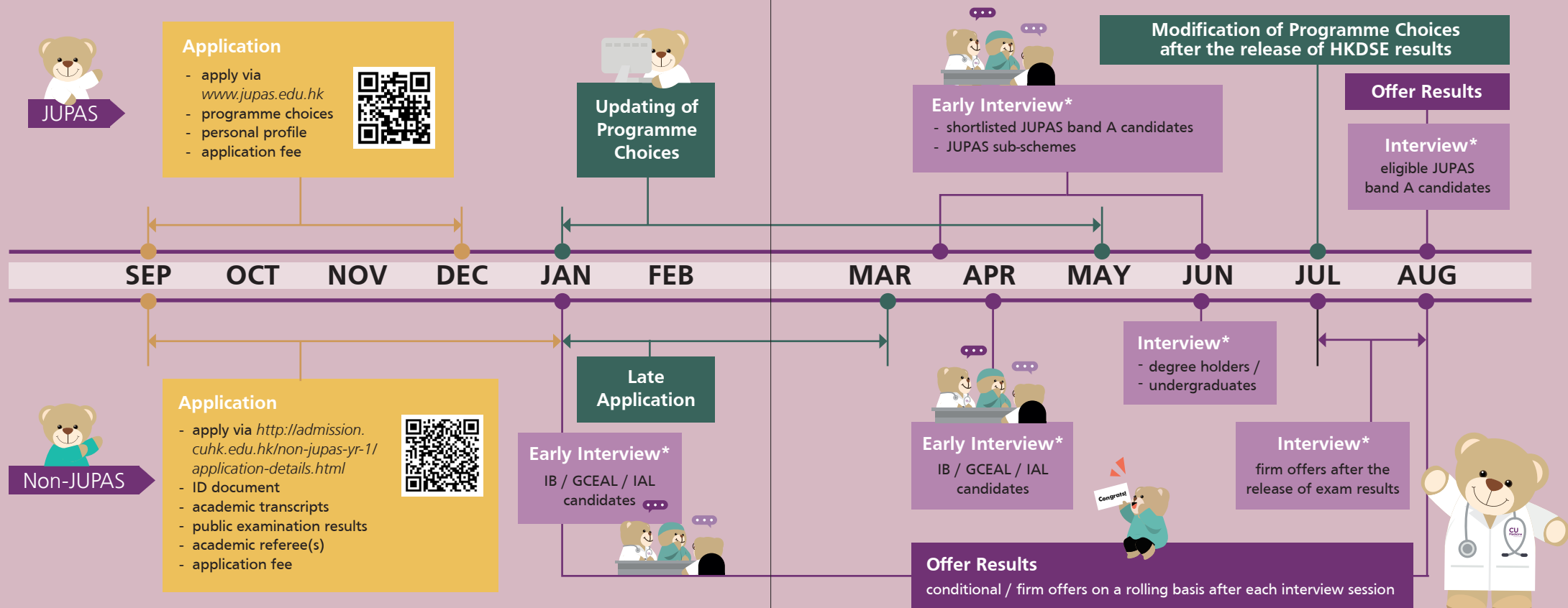
International Internship



GPS Project



Admissions ▶ Timeline (Subject to announcement)



* Interviews are by invitation. Candidates are required to attend the interview once only.

Admissions ▶ Interview

Interview Format

Duration

15 minutes

Language

English

A face-to-face individual interview conducted by two panel members of our senior professors, outstanding medical alumni or distinguished physician leaders in the community.

* Online Interview may be adopted in case of contingencies.



Interview Categories

5Ms



- 1 Motivation and Expectations**
- 2 Medicine and Innovation**
- 3 Morals, Ethics and Critical Thinking**
- 4 Maturity, Leadership and Teamwork**
- 5 Manner and Communication**

Admissions ▶ Requirements[^]

MBChB

JUPAS

HKDSE

≥40

Based on the previous results, we expect that students should achieve a total HKDSE score ≥ 40 for entry into our medicine programme.

The 4 Core subjects and the best 3 Elective subjects will be calculated as the HKDSE total score (where level 5** = 7 points, 5* = 6 points, 5 = 5 points etc.)

The extended mathematics module (M1/M2) contributes to the total HKDSE score if its attained level is higher than that of the worst one of the seven subjects.

Non-JUPAS#

IB

≥42

The minimum requirement is a final score ≥ 42 (out of 45), with grades of at least 6,7,7 in the Higher Level subjects.

GCE A-Level

4A*

The minimum requirement is 4A* (usually an average mark of $\geq 95\%$), excluding Chinese. Further Maths is not counted as a separate subject. The raw mark of Maths or Further Maths, whichever is higher, will count towards the total GCE score.

GPS

HKDSE

≥46

+

5**

in 4 subjects

IB

≥44

GCE A-Level

A*

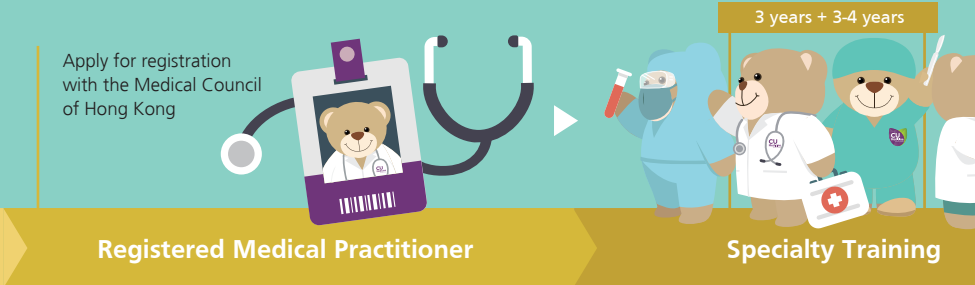
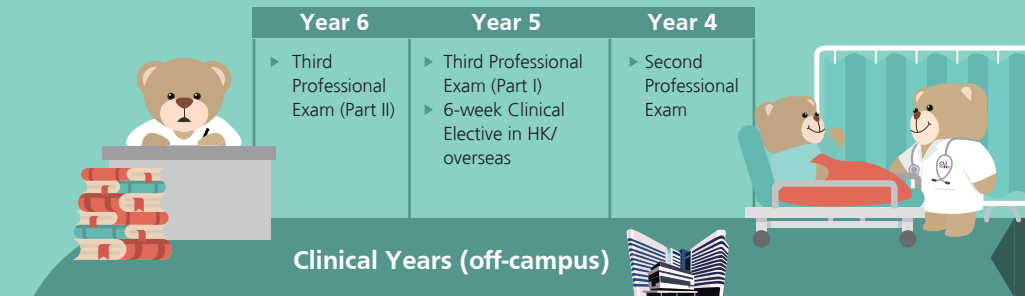
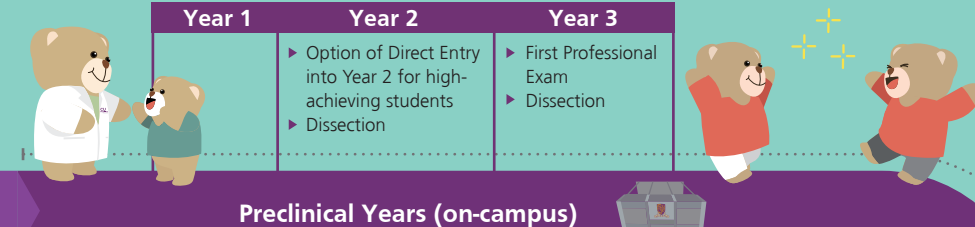
in all subjects with average mark of

97%

[^] The programme admission requirements are subject to interview performance and a past record of achievement. Please refer to the latest arrangement of the faculty.

Non-JUPAS applicants are students applying with academic qualification other than the HKDSE. For admission details, please visit: <http://www.med.cuhk.edu.hk> and <http://admission.cuhk.edu.hk>

Learning Journey



Teaching Facilities

Choh-Ming Li Basic Medical Sciences Building (BMSB)

CUHK



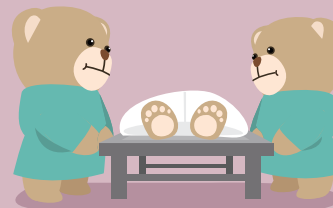
The BMSB is a dedicated teaching and learning complex for the undergraduate students of the Faculty of Medicine.

Designed to heighten effectiveness and efficiency for education excellence, the building was renovated in 2020 with refurbished modern classrooms, state-of-the-art teaching laboratories, computer rooms, and a spacious learning common with rooftop garden that can accommodate more than 130 guests.



Dissecting Laboratory

Choh-Ming Li Basic Medical Sciences Building (BMSB), CUHK



We take special pride in our modern dissection laboratory - one of the finest in the world for hands-on dissection training and life-and-death education. Students learn valuable lessons and anatomy knowledge from the “silent teachers” and develop a deep sense of gratitude and respect for those who have donated their bodies to science.

Since the “silent teachers” programme was launched in 2011, over 19,500 donors have registered for the programme to contribute to the development of local healthcare education and research as of Aug 2021.

Teaching Facilities



Prince of Wales Hospital

(Major Teaching Hospital of CU Medicine)

📍 30-32 Ngan Shing Street, Shatin



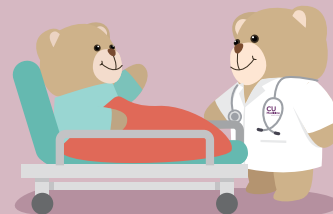
As the largest teaching hospital of CU Medicine, the Prince of Wales Hospital has worked closely with the University to nurture over 5,000 healthcare professionals while supporting our medical research initiatives over the last few decades.

Occupying an area of around 10.5 hectares, the 1,700-bed regional acute hospital provides a comprehensive range of secondary, tertiary, and quaternary healthcare services through its many multidisciplinary teams, offering patients state-of-the-art medical care and cutting-edge treatment of many complex and rare diseases.

The Phase II redevelopment project commenced in 2017 will provide additional space to meet the increasing service demand and operational needs.

CUHK Medical Centre

📍 9 Chak Cheung Street, Shatin



The CUHK Medical Centre (CUHKMC) is a non-profit, private teaching hospital wholly owned by The Chinese University of Hong Kong (CUHK). With a social mission to bridge the service gaps between private and public healthcare in Hong Kong, CUHKMC is dedicated to offering quality healthcare service at affordable and transparent package prices. In line with the not-for-profit principle, all surpluses from all healthcare services will be ploughed back to the hospital for hospital development and the CUHK Faculty of Medicine for research and teaching.



Teaching Facilities

Li Ping Medical Library

📍 Lui Che Woo Clinical Sciences Building, Prince of Wales Hospital



The Li Ping Medical Library provides an extensive collection of clinical and medical sciences resources in print and electronic formats to support the needs of students, faculty, and researchers. The design of collaborative learning space and individual study areas can cater to users with different learning styles.

Apart from a few sections, the Library provides 24-hour access for users daily.



Kai Chong Tong Clinical Skills Learning Centre

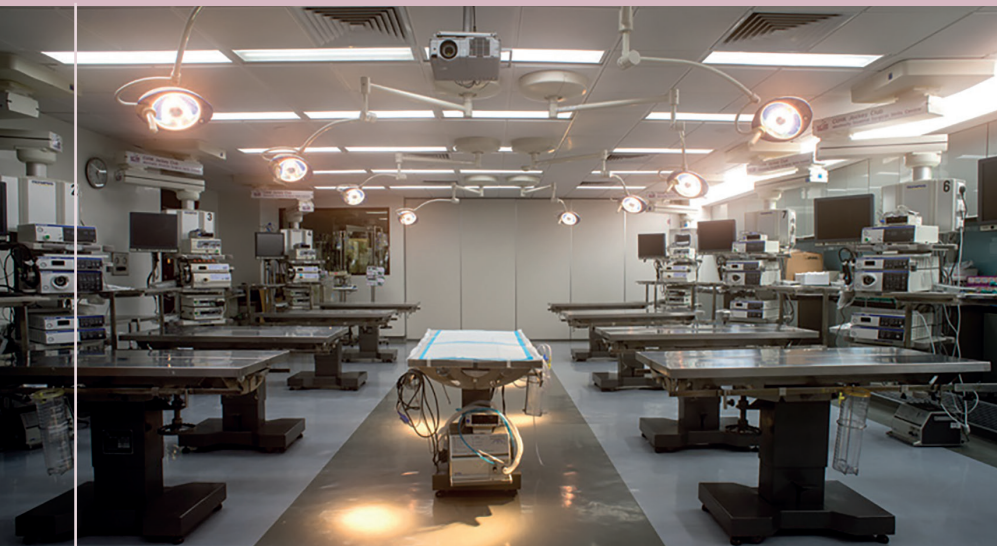
📍 Lui Che Woo Clinical Sciences Building, Prince of Wales Hospital



To help students develop physical examination skills and clinical procedures as part of our integrated systems-based medical curriculum, the 8,000 sq. ft. Learning Centre features 7 consultation rooms, 6 open-space demonstration/lecture rooms, and a control room.

Two high-fidelity simulation wards were recently built to improve the practical experience of medical students. The wards are well-equipped in a normal ward setting to provide a safe and controlled clinical learning environment to supplement classroom teaching.

Teaching Facilities



CUHK Jockey Club Minimally Invasive Surgical Skills Centre (MISSC)

📍 Li Ka Shing Specialist Clinic
(North Wing),
Prince of Wales Hospital

Opened in 2005, MISSC is the first training centre offering minimally invasive, robotic and endoscopic surgical training in the Asia Pacific region.

The centre comprises well-equipped Robotic & Minimally Invasive Surgical Skills Laboratory, Microsurgical & Endoscopic Skills Laboratory as well as Simulated Operating Theatre for facilitating hands-on training and research.

Lo Kwee-Seong Integrated Biomedical Sciences Building

📍 Area 39, CUHK



Equipped with advanced biomedical equipment, the nine-storey, state-of-the-art building contains a demonstration laboratory, seminar rooms, research commons, theme-based laboratories, meeting areas and offices. Its open-plan layout and green designs offer an integrating, eco-friendly environment for the Faculty's expanding research activities and scientific exchanges.

The building has received Platinum Standard rating from the Hong Kong Building Environmental Assessment Method (BEAM).



Exchange & Clinical Attachment

Number of outgoing students in 2016-2020:

740+

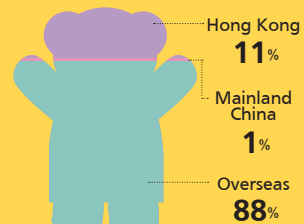
← Departure →

Number of incoming and visiting students in 2016-2020:

340+

→ Arrival ←

Destinations of Student Clinical Attachment in 2016-2020



Overseas regions including:

Australia	Netherlands
Austria	Poland
Canada	Singapore
Cuba	South Africa
Czech Republic	South Korea
Fiji	Sri Lanka
France	Sweden
Germany	Taiwan
India	Tanzania
Ireland	Thailand
Italy	The United Kingdom
Jamaica	The United States
Japan	Vietnam
Kenya	Zambia
Nepal	etc...

ANATOMY



Awards & Scholarships

University Admission Scholarships

Criteria

Outstanding academic or non-academic performance

JUPAS:

Bases on HKDSE results

Non-JUPAS:

- Bases on examination results of GCE A-Level / IB Diploma / SAT / OSSD / B.C.
- Diploma (or equivalent) / ATAR / Taiwan GSAT / Cambridge Pre-U, etc.

Application

No application is required. The University will identify and grant qualified new students.

Amount

Up to full-tuition coverage. Some of the Admission Scholarships will also include an allowance of up to HK\$45,000 per year. Most of the Admission Scholarships are renewable for the normative period of study programme (subject to satisfactory academic progress).

Faculty Admission Scholarships

Prestigious Admission Scholarships for Medical Students



Dr and Madam Tzu-leung Ho Scholarship for Distinguished Medical Students

(For S.H. Ho College students)
Up to HK\$600,000
(\$100,000 each year, to be renewable during normative study period)



My Life in Medicine Award 吾生有杏獎學金

Up to HK\$500,000
(\$100,000 each year, to be renewable up to 5 years)



TYW Holdings Corporation Scholarships

Up to HK\$480,000
(HK\$80,000 each year, to be renewable during normative study period)

Scholarships & Awards Figures in 2020-21



Number of scholarships offered

250+



Number of medical students awardees

~700



Percentage of medical students awardees

~48%



Amount of scholarships offered

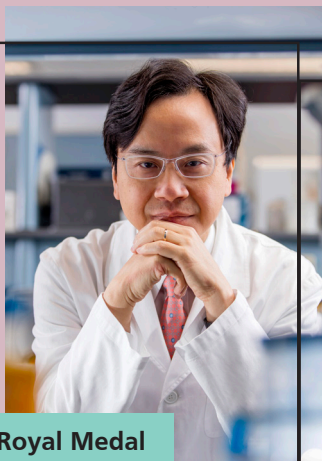
~HK\$23,000,000



Research Excellence 2020 - 2021

Professor LO Yuk Ming Dennis

Department of Chemical Pathology



2021 Royal Medal
Royal Society of London



**2021 Breakthrough Prize
in Life Sciences**



Explore More ▶

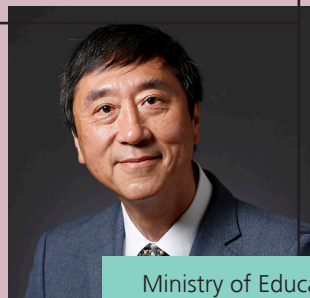


**Professor NG
Siew Chien**

Department of Medicine
& Therapeutics



**Professor SUNG
Jao Yiu Joseph**
Emeritus Professor



Ministry of Education Higher Education Outstanding Scientific
Research Output Awards (Science and Technology) 2020 –
First-class award in Natural Sciences

**Professor CHAN
Ka Leung Francis**

Department of Medicine
& Therapeutics



**Professor MOK
Shu Kam Tony**

Department of
Clinical Oncology



Ministry of Education Higher
Education Outstanding Scientific
Research Output Awards
(Science and Technology) 2020 –
**Second-class award in
Natural Sciences**

Research Excellence 2020 - 2021

**The Xiaoren Pan
Distinguished
Research Award for
Epidemiology of
Diabetes in Asia 2020**



**Professor MA
Ching Wan Ronald**
Department of Medicine
& Therapeutics

**Dr TANG
Ming Kuen Patrick**
Department of Anatomical
and Cellular Pathology



**Gold Medal with Congratulations of the Jury:
A Novel Virus-Free Anticancer Gene Therapy**
International Exhibition of Inventions Geneva

Professor LAN Hui-yao
Department of Medicine
& Therapeutics



Professor YU Jun
Department of Medicine
& Therapeutics



**Research Innovation
Award for
Preclinical Medicine**

The 7th Chinese Medical
Women Association (CMWA)
Wuzhou Women Science &
Technology Award

**Senior Member of
the National Academy
of Inventor (NAI)**



Professor JIANG Peiyong
Department of Chemical Pathology

Dr KO Ho Owen
Department of Medicine
& Therapeutics



**2021 Excellent Young
Scientists Fund**
National Natural Science
Foundation of China (NSFC)

Outstanding Medical Alumni

CHAN Shannon Melissa

(MBChB 2007)

- Assistant Professor
- Honorary Associate Consultant
- Department of Surgery, Prince of Wales Hospital, Faculty of Medicine, CUHK
- Surgeon and Field Worker of Médecins Sans Frontières



CHOW Kai Ming

(MBChB 1995)

- Consultant & Chief of Service, Department of Medicine & Therapeutics, Prince of Wales Hospital
- Deputy Service Director (Quality & Safety), New Territories East Cluster, Hospital Authority
- Chairman, Hong Kong Society of Nephrology

CHIU Wai Yan, Philip

(MBChB 1994)

- Associate Dean (External Affairs)
- Director, CUHK Jockey Club Minimally Invasive Surgical Skills Centre
- Director, Chow Yuk Ho Technology Centre for Innovative Medicine
- Professor and Head of Division of Upper GI & Metabolic Surgery Faculty of Medicine, CUHK
- Director of Endoscopy Centre, Prince of Wales Hospital and Cluster Director of Endoscopy, New Territories East Cluster, Hospital Authority
- Director, Multi-Scale Medical Robotics Centre, InnoHK



KO Ho, Owen

(MBChB 2015)

- Assistant Professor, Department of Medicine & Therapeutics and School of Biomedical Sciences
- Assistant Professor (by courtesy), Department of Psychiatry
- Principal Investigator, Li Ka Shing Institute of Health Sciences
- Principal Investigator, Gerald Choa Neuroscience Centre Faculty of Medicine, CUHK
- Associate Faculty Member, Department of Biomedical Engineering, Faculty of Engineering, CUHK

LEUNG Yu Lung, Dexter

(MBChB 1997)

- Honorary Consultant and Specialist in Ophthalmology
- Past President, the Hong Kong Ophthalmological Society
- Awardee of CUHK Distinguished Medical Alumni Award (Global Achievement 2019)



YEUNG Man Chow, Maggie

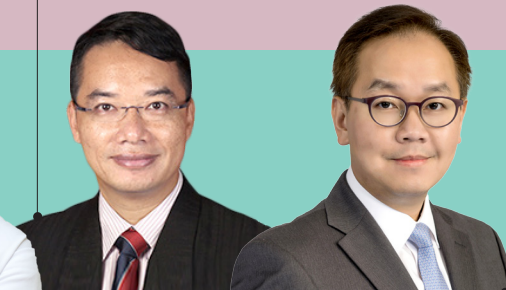
(MBChB 1993)

- Specialist in Paediatrics
- Medical Volunteer of Hong Kong Red Cross
- Awardee of CUHK Distinguished Medical Alumni Award (Humanitarian Service 2019)

SIU Yuet Chung, Axel

(MBChB 1992)

- Consultant (Accident & Emergency), Ruttonjee & Tang Shiu Kin Hospitals
- Honorary Clinical Associate Professor, Faculty of Medicine, CUHK
- Medical Director, Hong Kong Fire Services Department
- Immediate Past President, Hong Kong College of Emergency Medicine



WU Che Yuen, Justin

(MBChB 1993)

- Associate Dean (Health Systems)
- Professor, Department of Medicine & Therapeutics
- Founding Director, Global Physician-Leadership Stream (MBChB-GPS Programme), Faculty of Medicine, CUHK
- Chairman and Director, CUHK Medical Services
- Founding Director, Hong Kong Institute of Integrative Medicine
- President, Asian Pacific Association of Gastroenterology
- Member of CUHK Council

Appendix 1 – Transportation Guide

Transportation Between CUHK & Prince of Wales Hospital (PWH)

Recommended Route 1

⋯ (around 45 minutes) ⋯



University Station
(MTR East Rail Line)



Fo Tan Station
(MTR East Rail Line)



Minibus No. 811*
*Mini-bus to PWH
(Yu Chui Court direction)
*Mini-bus to CUHK
(Sui Wo Court Phase 1 direction)



PWH

Recommended Route 2

⋯ (around 50 minutes) ⋯



University Station
(MTR East Rail Line)



Tai Wai Station
(MTR East Rail Line)



City One Station
(MTR Tuen Ma Line)



PWH

Appendix 2 - Location Map



Shuttle bus route & timetable

Online map

