



Self-Service Printing Configuration for Windows 7/8/10 - Fuji Xerox

In Windows, the default settings of Pi Chiu – Self-Service Print Station 2 are: Black & White, Duplex and A4 size. Users can further change the settings.

(Illustrated in 64-bit Windows and similar screens could be applied to 32-bit OS)

Suitable for:

- printer WMYLC - Self-Service Print Station 3 ([32-bit](#) / [64-bit](#))
- printer WMYLC - Self-Service Print Station 4 ([32-bit](#) / [64-bit](#))

1. Check Printers in Windows

Windows 7

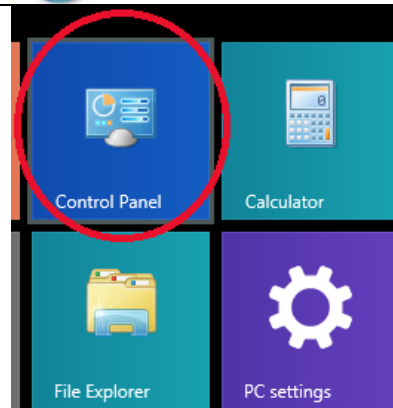
Start at bottom right hand

Select Control Panel → Hardware and Sound →
Devices and Printers

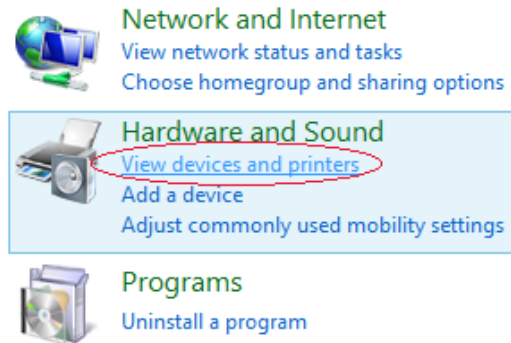


Windows 8

Open “Control Panel” and select “View devices and printers”.



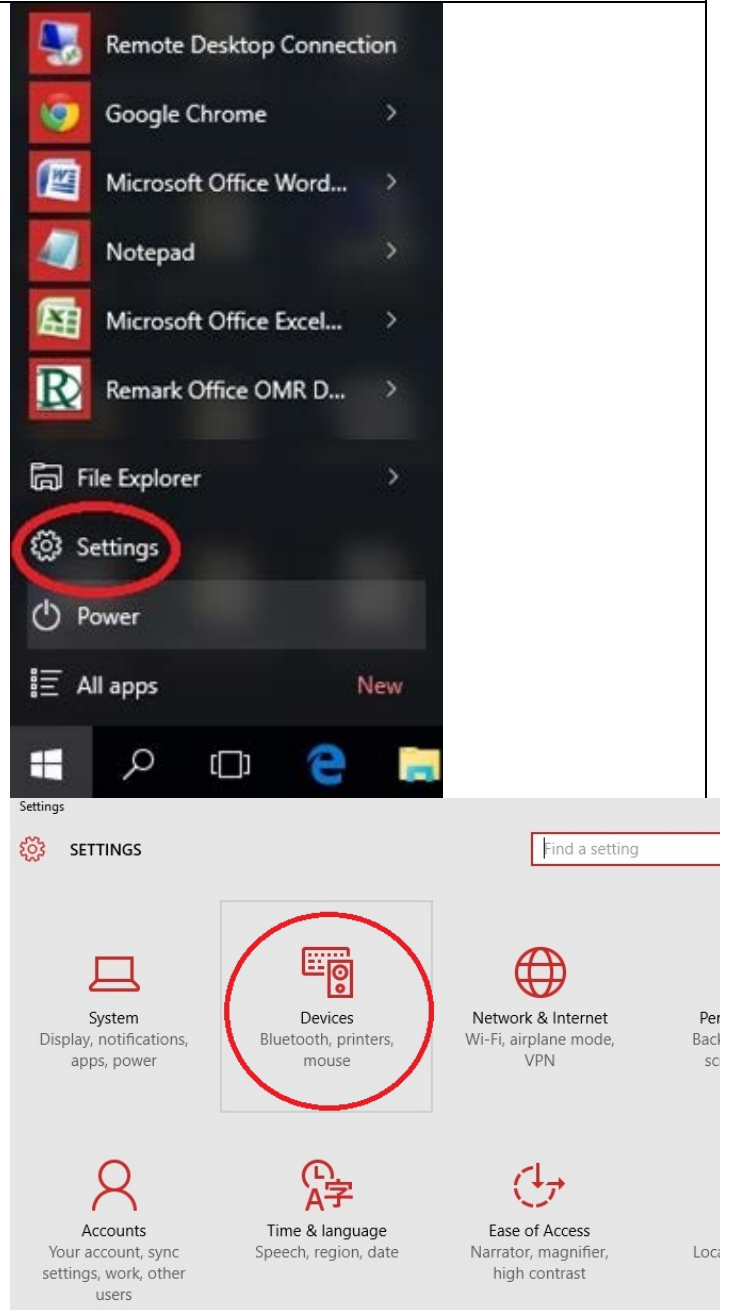
Windows 10
Open “Settings” and select “Devices”.



Network and Internet
View network status and tasks
Choose homegroup and sharing options

Hardware and Sound
View devices and printers
Add a device
Adjust commonly used mobility settings

Programs
Uninstall a program



Remote Desktop Connection
Google Chrome
Microsoft Office Word...
Notepad
Microsoft Office Excel...
Remark Office OMR D...
File Explorer
Settings
Power
All apps New

Settings

SETTINGS

Find a setting

System
Display, notifications, apps, power

Devices
Bluetooth, printers, mouse

Network & Internet
Wi-Fi, airplane mode, VPN

Accounts
Your account, sync settings, work, other users

Time & language
Speech, region, date

Ease of Access
Narrator, magnifier, high contrast

2/. Setup Printing Preferences for Fuji Xerox

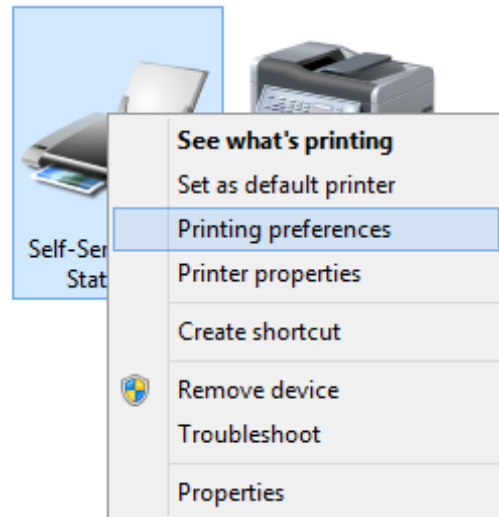
○ For Windows 7, 8

Right click the printer you would like to use:

“WMY LC – Self-Service Print Station 3”

“ WMY LC – Self-Service Print Station 4”

Then select “Set as default printer”.



Suggested printer setting:

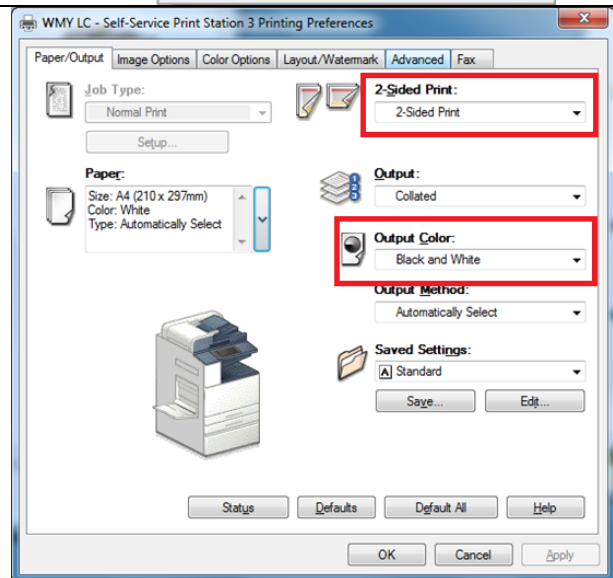
Follow the steps and change the settings.

Default Settings:

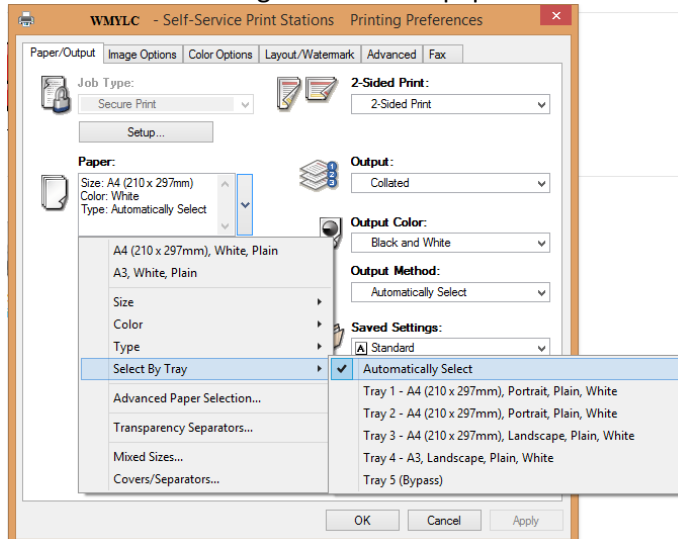
2 Sided Print: 2 Sided Print

Output Color: Black and White

Click “OK” if you have configured the printer settings.



Default A4 and change to the other paper size as below:



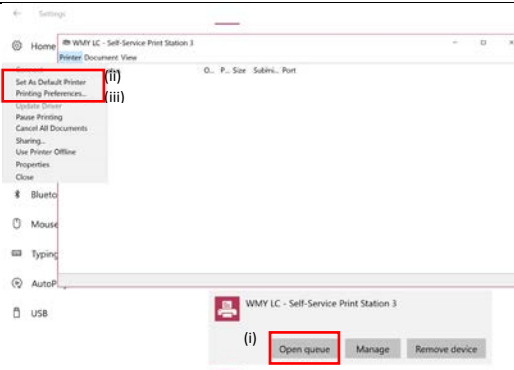
○ **For Windows 10**

Right click the printer you would like to use:
“**WMY LC – Self-Service Print Station 3**”
“**WMY LC – Self-Service Print Station 4**”

Set up configure preference

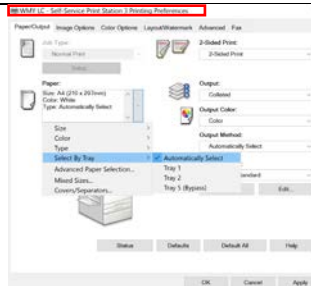
i/. Click “**open queue**”

ii/. Then select “Set as default printer”.



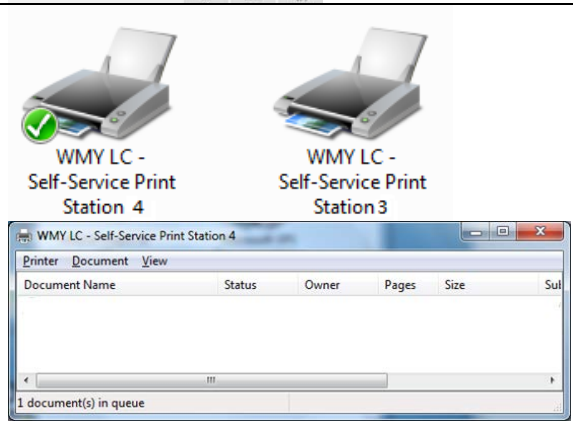
iii/. Set “Printing Preference”

Please choose Paper → “Select By Tray” and
“Automatically Select”

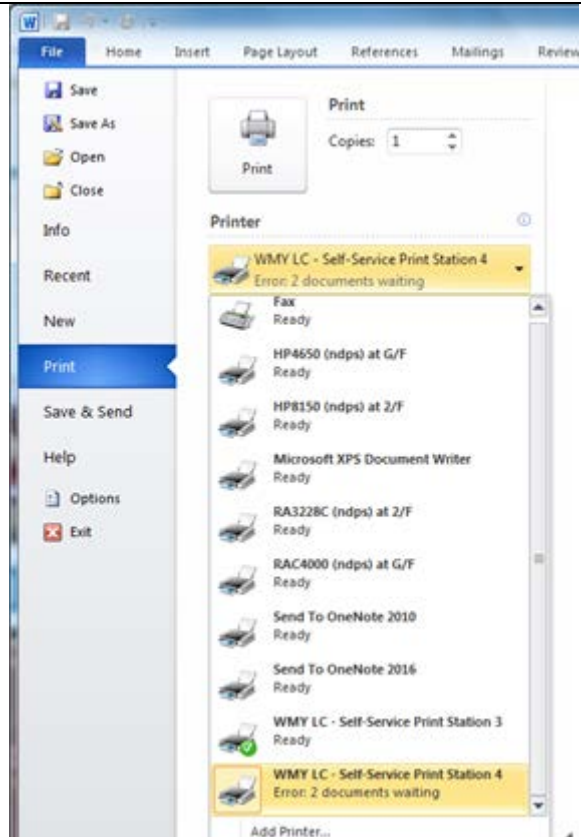


3. Input Billing Code and Passcode For Print
in software:

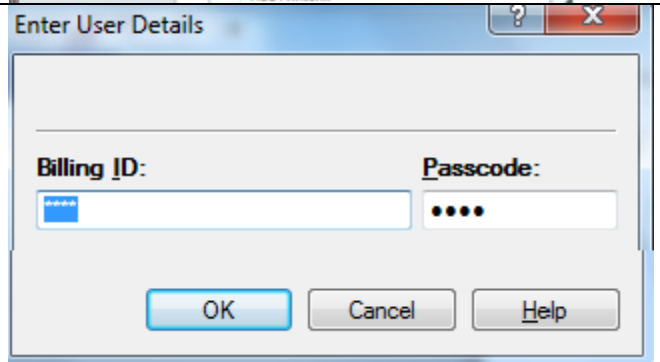
Click on printer you selected:



Open software, e.g. MS Word →File → Print

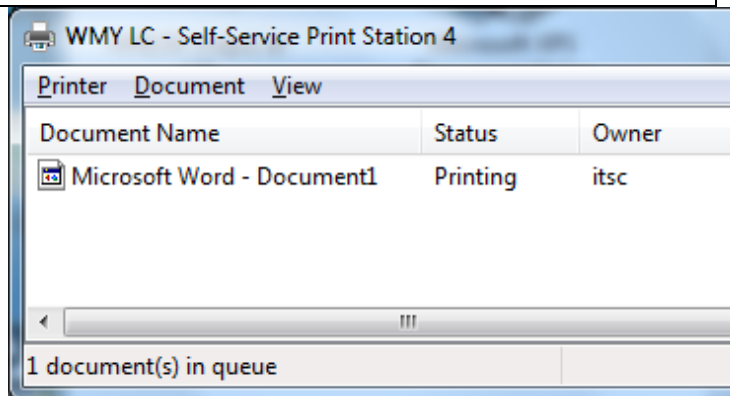


Type your “**Billing Code**” and “**Passcode**”
(Only number is accepted).



Click on printer you selected and see the status as right hand side.

Then collect the print out at print station →
Charge Print



Prepared by: User Support Division, Information Technology Services Centre

Last Update: March 2017

Copyright © 2017. All Rights Reserved.

Information Technology Services Centre, The Chinese University of Hong Kong