



Pi Chiu – Self-Service Print Station 2 Driver For Macintosh Users

Follow the instructions below to install the printer driver for Self-Service Printing. The download link of “Mac OSX 10.5-10.10 PPD & Plug-in Installer” could be searched at [here](#).

1. Click “View Other Drivers”

Download the "Mac OSX 10.5-10.10 PPD & Plug-in Installer".

DocuCentre-V C3373 Drivers & Downloads

Not your product? Search again

Drivers | Self Help | Documentation | Utilities | Others

View By: Operating System: Mac OS X 10.10 | Language: English | Update | Download Recommended Driver

Mac OS X Non-PS Driver (Recommended) [Download]

| | | | |
|------------------|---|-------------------|--------------------|
| Operating System | Mac OS X 10.7, Mac OS X 10.8 | Show More | |
| Products | ApeosPort-V C2275 ApeosPort-V C3373 ApeosPort-V C3375 | Show More | |
| Notes | - | | |
| Date: 21/10/2014 | Version: 1.71.021 | Language: English | Size: 1,640,246 kb |

[What Driver do I need?] [View Other Drivers]

Mac OSX 10.5 - 10.10 PPD & Plug-in Installer [Download]

| | | | |
|------------------|---|-------------------|---------------------|
| Operating System | Mac OS X 10.8, Mac OS X 10.7 | Show More | |
| Products | ApeosPort 350 ApeosPort 450 ApeosPort 550 | Show More | |
| Notes | - | | |
| Date: 21/10/2014 | Version: 1.72.150 | Language: English | Size: 23,164,822 kb |

[What Driver do I need?] [Hide]

2. Double click "fxmacprnps1410bm105iml.dmg" on Desktop.

Double click "Fuji Xerox PS Plug-in Installer.pkg".

fxmacprnps1410bm105iml.dmg

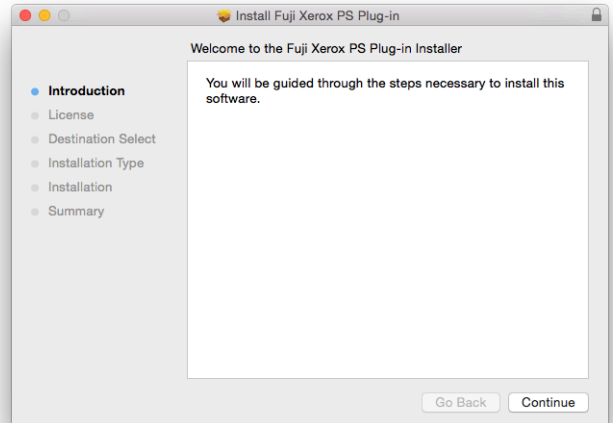
Fuji Xerox PS Plug-in Installer

2 items

Fuji Xerox PS Plug-in Installer.pkg

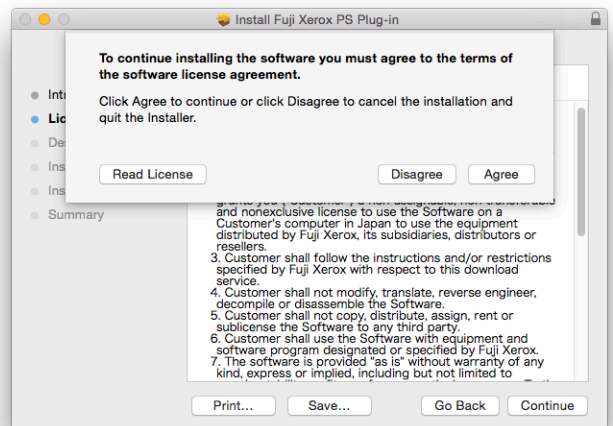
readme.txt

3. Click **"Continue"**.

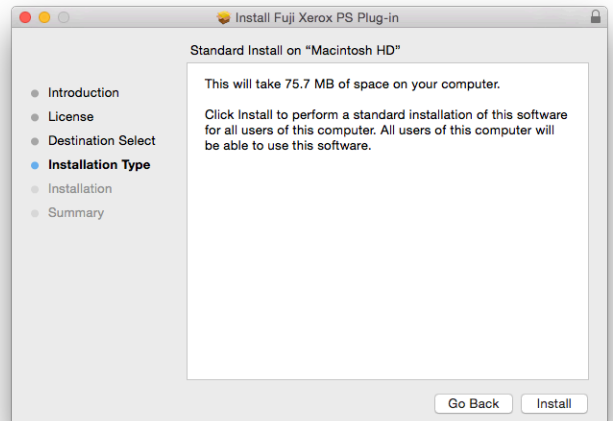


4. Read the software license agreement, click **"Continue"** to proceed.

Click **"Agree"** if you accept the license agreement.



5. Click **"Install"** to proceed the installation. The installation may take a few minutes.

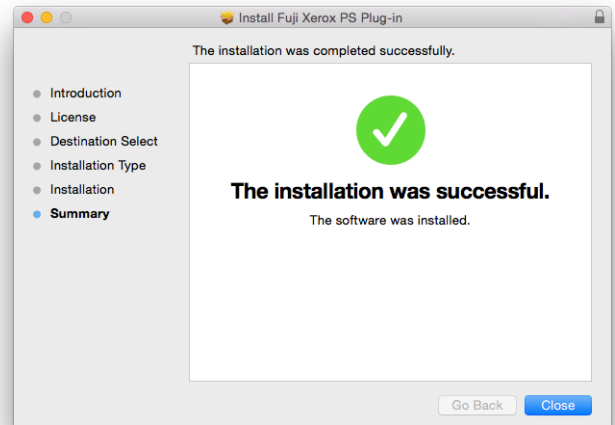


6. Input your computer **Password** for installation.

Click "**Install Software**"



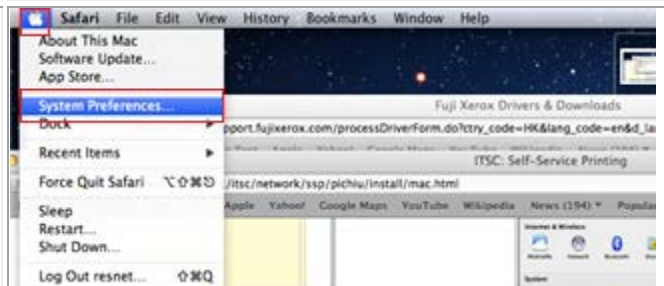
7. Click "**Close**" to leave the installer.



8. Follow the steps here to finalize the installation.
(You may **connect to the Internet and CUHK VPN** to finalize the installation.)

Click the "**Apple Icon**" on the upper left corner.

Select "**System Preferences**"



9. Click "**Printers & Scanners**".



10. Click “+”.



11. Click “IP”.

Input the following information:

Address

ssps2-pichiu.itsc.cuhk.edu.hk
(For setup of Self-Print Station2)

Protocol

Internet Printing Protocol - IPP

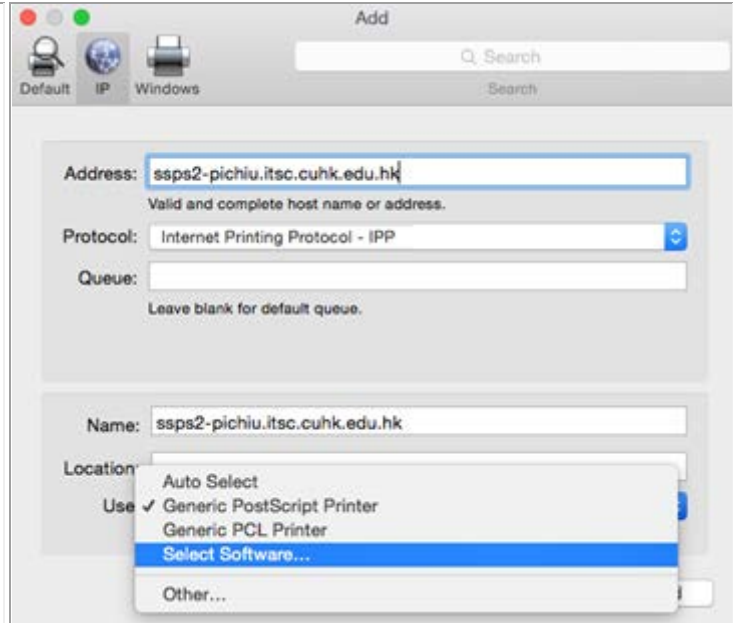
Name

ssps2-pichiu.itsc.cuhk.edu.hk
(For setup of Self-Print Station2)

Use

Select Software ...

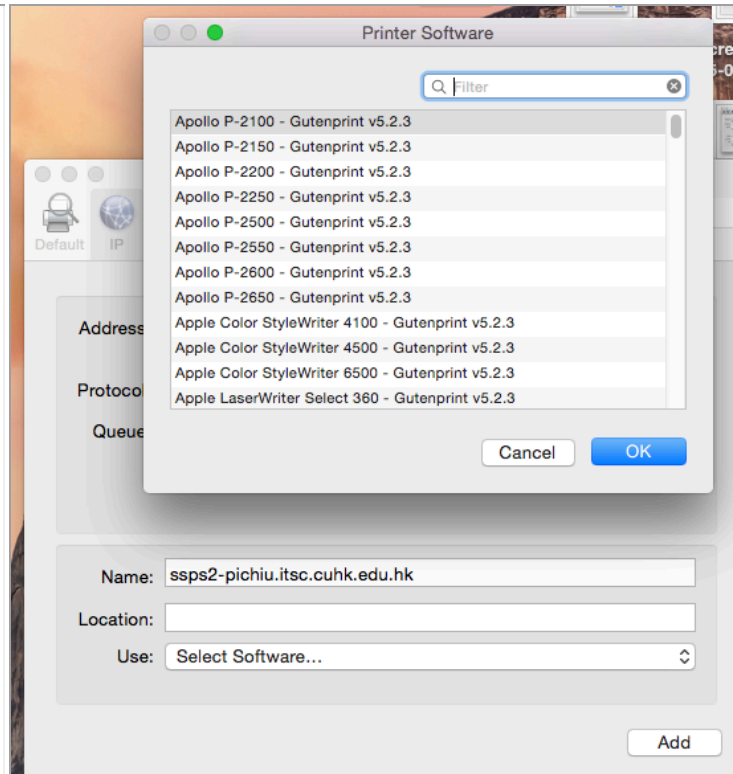
It will list be drivers as the photo shown in step 12.

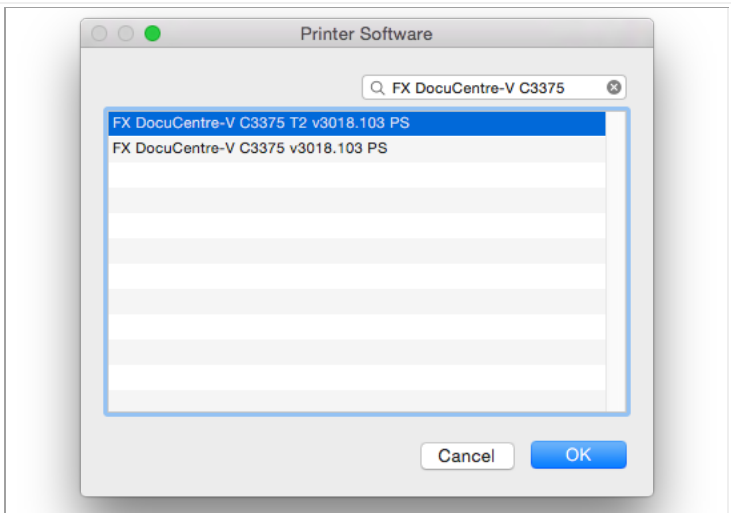
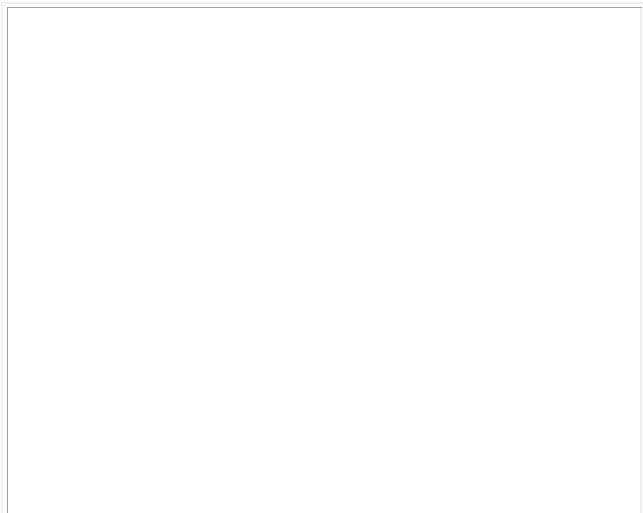


12. At “Use” drop menu, choose “**Select Software**”. It will list driver as the photo shown.

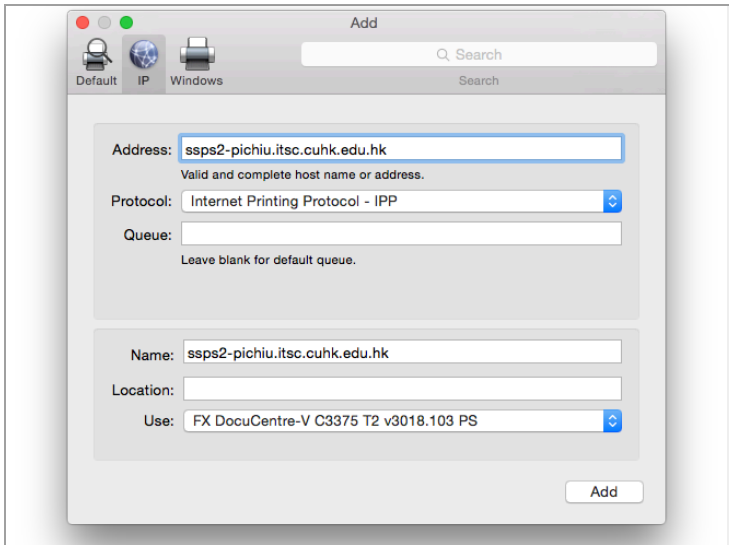
Type: **DocuCentre-V 3373** to search the appropriate driver.

Select “**FX DocuCentre-V C3373 T2 v3018.103PS**”





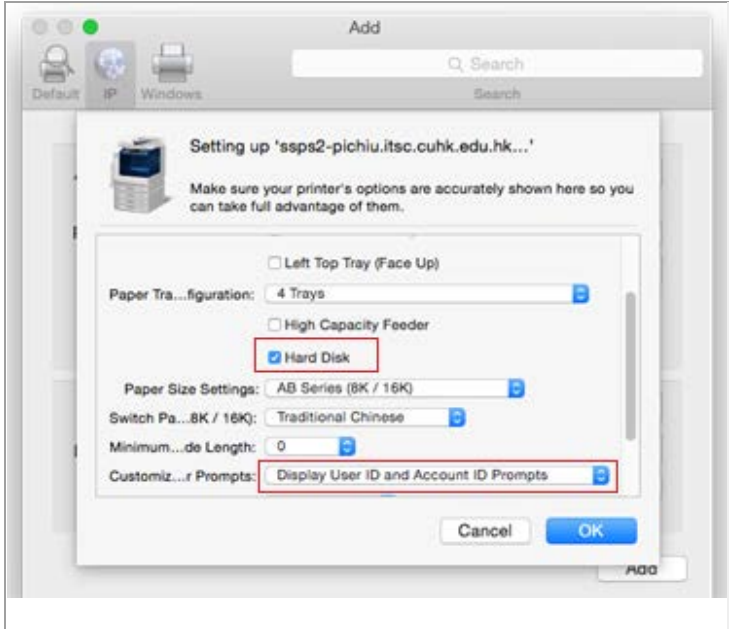
13. Click **“Add”**.



14. Configure the print driver to enable “Secure Print”:

Check **“Hard Disk”** to enable “Secure Print” feature”

Click **“OK”**.



15. The printer installation is completed.



