

# **DUO Two-Factor Authentication (DUO 2FA) Deployment Guide for Windows systems**

Prepared By

ITSC

Version: 2.1

Published: Mar 2018

## Table of Contents

1. DUO 2FA Integration for MS Windows Clients & Servers Logon .....	4
1.1. Supporting Systems .....	4
1.2. Security Level defined for Windows Clients & Server.....	4
1.3. Prerequisites .....	4
2. Standalone Installation for Windows Clients & Servers .....	5
3. Installation by Group Policy for Windows Clients.....	7
4. Reference .....	7

<b>Document History</b>		
<b>Version</b>	<b>Update Date</b>	<b>Changes</b>
1.0	2018-03-09	Initial version
2.0	2019-03-29	Added 1.3 item (v).
2.1	2022-01-14	Removed outdated client and server versions in 1.1.

## 1. DUO 2FA Integration for MS Windows Clients & Servers Logon

The Duo 2FA can be integrated to all Windows login attempts, whether via local console or over RDP.

If the 2FA is enabled for both RDP and console logons, and in case there is any error during the login, you can bypass the 2FA by restarting Windows into Safe Mode.

### 1.1. Supporting Systems

Duo 2FA for Windows logon supports the following operating systems of both client and server:

- **Clients:**
  - Windows 8.1, 10
- **Servers (GUI and core installs):**
  - Windows Server 2012, 2012 R2, 2016, 2019

### 1.2. Security Level defined for Windows Clients & Server

The security levels for Windows Clients & Servers are defined as below:

	Windows Clients	Windows Server
<b>Duo Mobile App</b>	Don't require up-to-date security patches for Duo Mobile.	Require up-to-date security patches for Duo Mobile.
<b>Mobile Screen Lock</b>	Allow authentication from devices without a screen lock.	Don't allow authentication from devices without a screen lock.

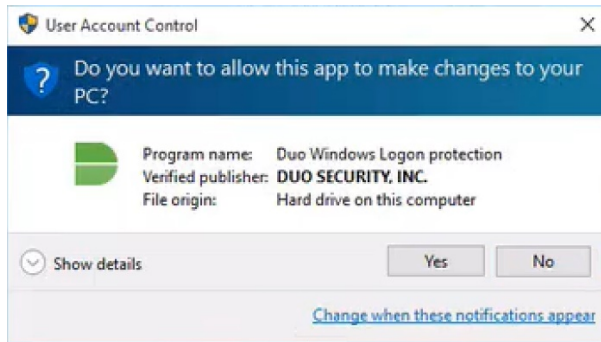
### 1.3. Prerequisites

- i. .NET Framework 4.5 or later is required.
- ii. Submit request to Service Desk > Information Security > General Enquiry > 2FA for getting the information below:
  - a. Get the **Integration Key**, **Secret Key** and **API Hostname**.
  - b. IP range of DUO cloud service or on-premise DUO proxy
- iii. Grant access right to DUO cloud service:
  - a. Client PCs: grant outgoing traffic to DUO cloud service
  - b. Servers: two methods for connecting to DUO services:
    - i. Directly connect to DUO cloud service
    - ii. Connect to on-premise DUO proxy server
  - c. PAW: Connect to on-premise DUO proxy with fail-safe option
- iv. Windows users must have their passwords to login to the system, user with blank password would not be able to login after Duo 2FA is integrated with the system.
- v. Windows login username must be matched as below:
  - a. Domain-joint systems: UPN
  - b. Non domain-joint systems: University ID, sAMAccountName, or Computing ID

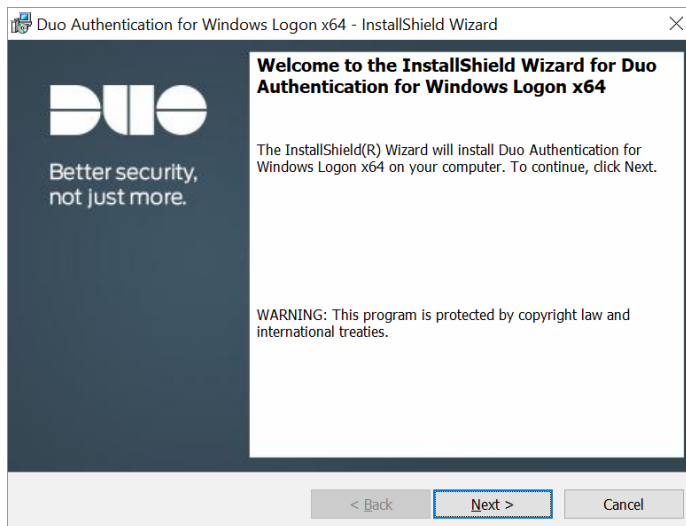
## 2. Standalone Installation for Windows Clients & Servers

### Steps:

- i. Download the “Duo Authentication for Windows Logon Installer Package” at <https://dl.duosecurity.com/duo-win-login-latest.exe>.
- ii. Run the Duo Authentication for Windows Logon installer with administrative privileges. Click **Yes** to install.



- iii. Click **Next** to start the installation.



- iv. Input the **Integration Key**, **Secret Key** and **API Hostname** provided by DUO administrator.

Duo Authentication for Windows Logon x64 - InstallShield Wizard

**Duo Security Account Details**

Please enter the keys and hostname provided by Duo Security

Integration Key:

Secret Key:

API Hostname:

Bypass Duo authentication when offline (FailOpen) ← Recommended for client systems only

Use auto push to authenticate if available ← Recommended for both client & server systems

Only prompt for Duo authentication when logging in via RDP

Enable Smart card support

InstallShield

< Back Next > Cancel

Then select the appropriate checkbox(es) for your system:

For client systems:

It is recommended to check **Bypass Duo authentication when offline (FailOpen)** and **Use auto push to authenticate if available**.

For server systems:

It is recommended to check **Use auto push to authenticate if available**.

Then click **Next** to continue.

- v. Click **Install**.

Duo Authentication for Windows Logon x64 - InstallShield Wizard

**Ready to Install the Program**

The wizard is ready to begin installation.

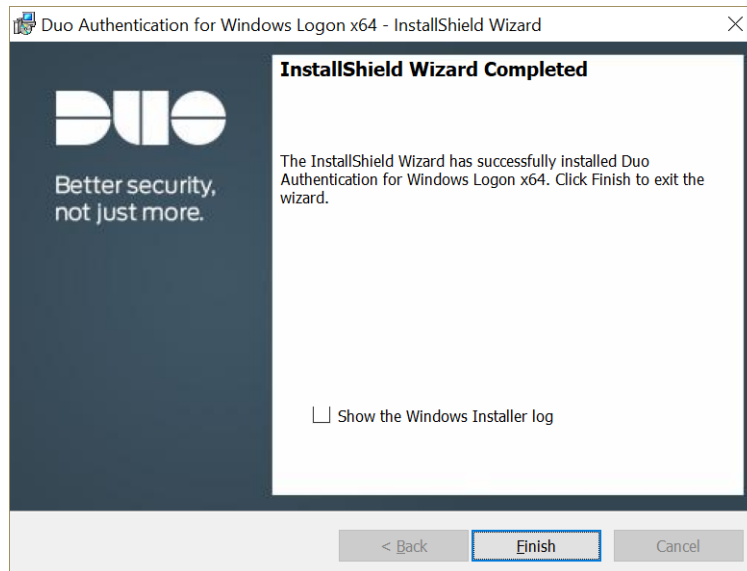
Click Install to begin the installation.

If you want to review or change any of your installation settings, click Back. Click Cancel to exit the wizard.

InstallShield

< Back Install Cancel

- vi. Installation complete, click **Finish**.



### 3. Installation by Group Policy for Windows Clients

Active Directory domain administrators may deploy and configure Duo 2FA for their domain-joined clients via the Group Policy. Details steps can be found at <https://duo.com/docs/winlogon-gpo>.

### 4. Reference

Windows Server integration: <https://duo.com/docs/rdp>

- END -