

# Windows Virtual Desktop (WVD) User Guide – WVD Client Access on Windows

*(This user guide uses Windows 10 as illustration.)*

## Table of Contents

A.	Get Started.....	1
B.	Install a WVD client (One-time installation) .....	2
C.	Subscribe the WVD service (At first time usage) .....	4
D.	Connect to WVD .....	6

For enquiries, please contact ITSC

- Hotline: 3943 8845 (during office hours)
- Online Service Desk: <http://servicedesk.itsc.cuhk.edu.hk> > Get help > General Enquiries

## A. Get Started

Windows Virtual Desktop (WVD) provides an alternate option for application administrator users to acquire a secure virtual desktop environment. WVD complies with all the workstation security standards that stipulated in Security Policy for Handling Personal Data. It can be accessed through a (1) web browser or (2) WVD client. This document describes the access through a WVD client.

### Prerequisites:


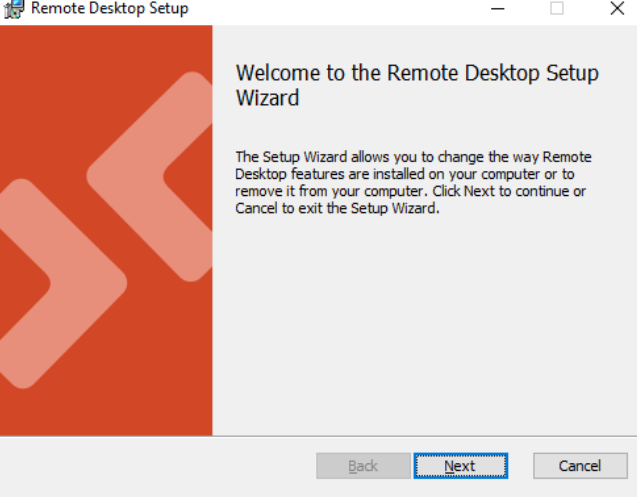
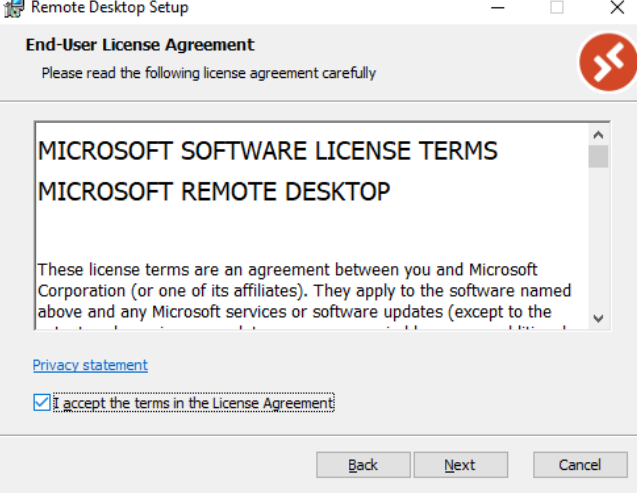
DUO Two Factor Authentication (**2FA**) is mandatory when using WVD. You must enable DUO 2FA on your account and install DUO Mobile App on your mobile in advance. Details:  
<https://www.itsc.cuhk.edu.hk/all-it/information-security/two-factor-authentication-2fa/>

### Supported Operating Systems and Browsers:

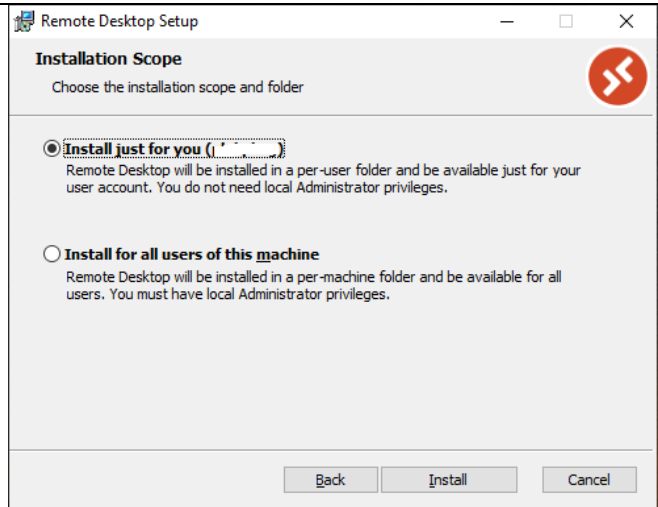
Browser	Supported OS	Notes
Microsoft Edge	Windows	
Internet Explorer	Windows	Version 11 or later
Apple Safari	macOS	
Mozilla Firefox	Windows, macOS, Linux	Version 55 or later
Google Chrome	Windows, macOS, Linux, Chrome OS	

## B. Install a WVD client (One-time installation)

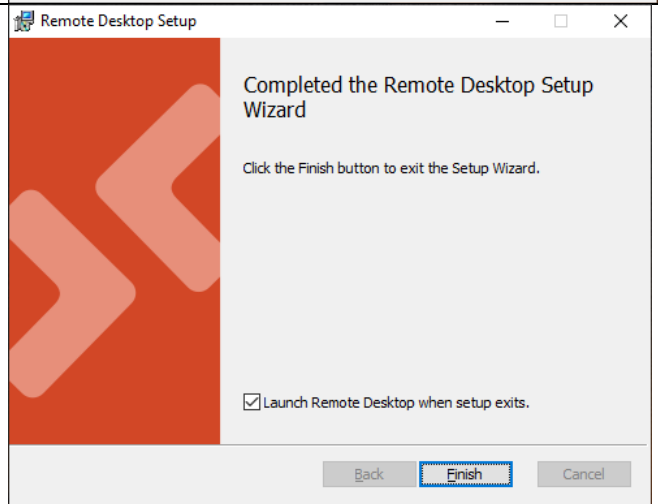
The supported platform:

<p>1. Download the WVD client:</p> <ul style="list-style-type: none"> <li>• <a href="https://go.microsoft.com/fwlink/?linkid=2068602">https://go.microsoft.com/fwlink/?linkid=2068602</a></li> </ul>	
<p>2. Execute Remote_Desktop_x.x.xxxx.x_x64.msi once download completed. Click <b>Next</b></p>	
<p>3. Read through the terms in the License Agreement. Check <b>I accept the terms in the License Agreement</b> if you agree to it and then click <b>Next</b>.</p>	

4. Select **Install just for you (username)** and click **Install**.

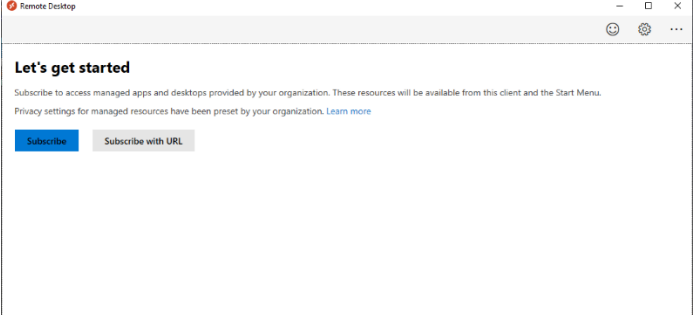
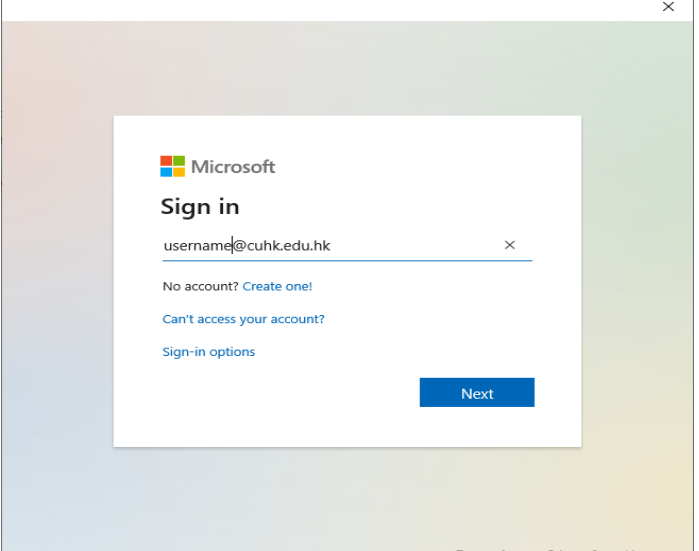





5. Click **Finish** to complete the installation.

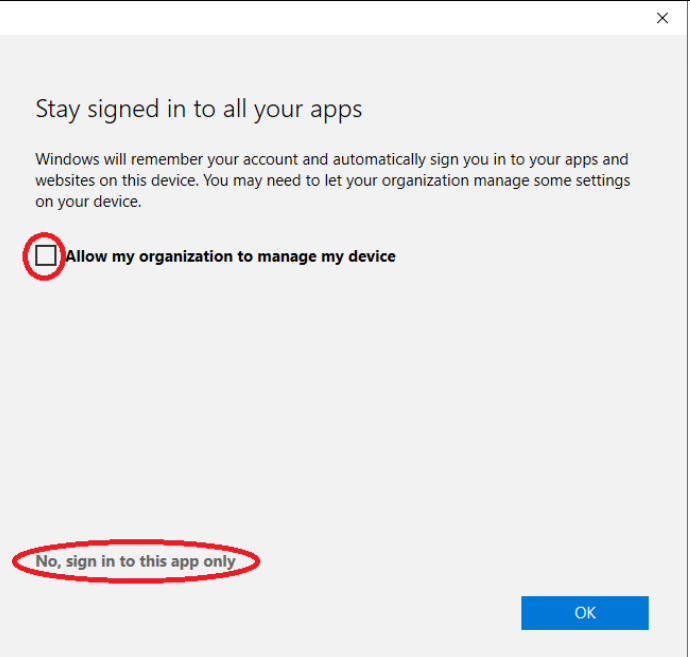
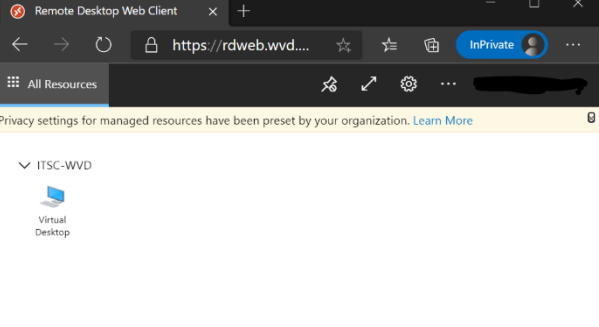


### C. Subscribe the WVD service (At first time usage)

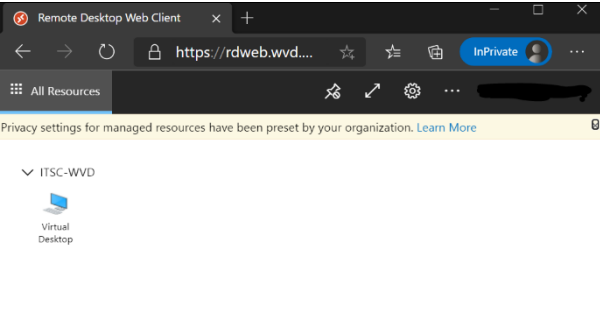
You need to subscribe the WVD service on each new device.

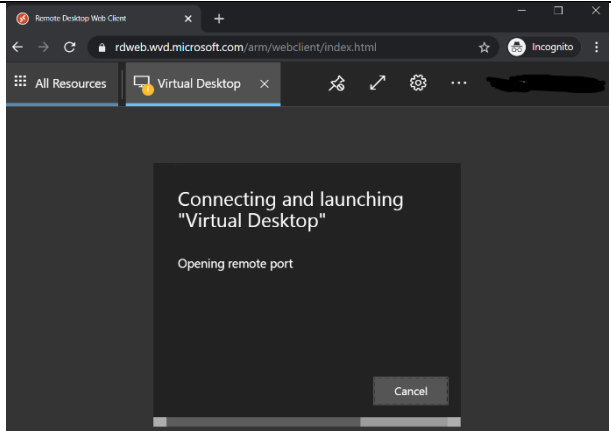
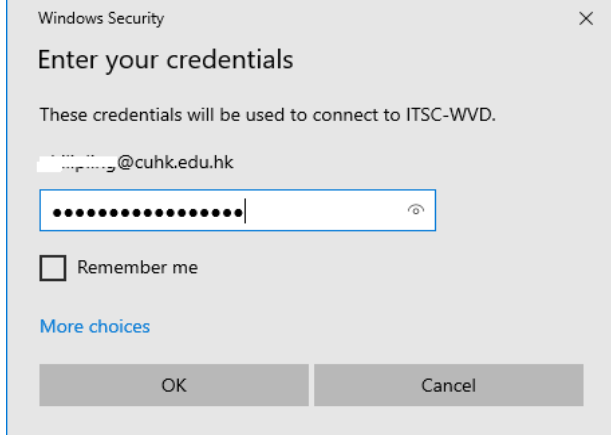
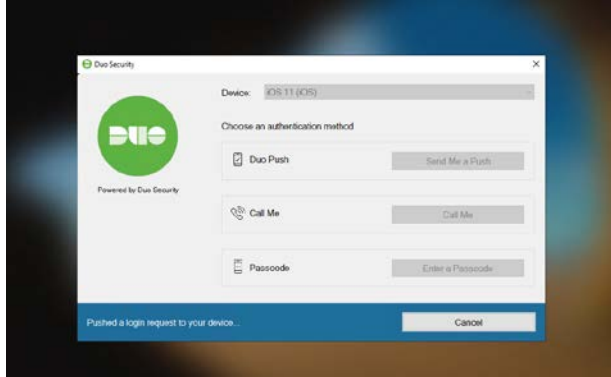

<p>1. Launch the WVD client that described in Section B. Click <b>Subscribe</b></p>	
<p>2. At <b>Sign in</b>, enter</p> <ul style="list-style-type: none"> <li>• <b>CUHK email address</b> (i.e. <a href="mailto:alias@cuhk.edu.hk">alias@cuhk.edu.hk</a>)</li> </ul> <p>Click <b>Next</b></p>	
<p>3. You'll be directed to CUHK Login page. Enter</p> <ul style="list-style-type: none"> <li>• <b>CUHK email address</b> (i.e. <a href="mailto:alias@cuhk.edu.hk">alias@cuhk.edu.hk</a>)</li> <li>• Password: <b>CUHK OnePass</b></li> </ul>	

<p>4. You'll be prompted for DUO 2FA authentication. Check and accept the 2FA prompt on your device.</p>	 <p>CUHK LOGIN For MyCUHK, Microsoft 365, LibrarySearch...</p> <p>For security reasons, we require additional information to verify your account (philipling@cuhk.edu.hk)</p> <p>Device: iOS 11 (iOS)</p> <p>Send Me a Push</p> <p>Enter a Passcode</p> <p><input type="checkbox"/> Remember me for 12 hours</p> <p>Pushed a login request to your device...</p> <p>Cancel</p> <p>itsc Information Technology Services Centre The Chinese University of Hong Kong</p>
<p>5. If you see the warning "Edge is out of date", click <b>Skip</b> to continue</p>	 <p>CUHK LOGIN For MyCUHK, Microsoft 365, LibrarySearch...</p> <p>For security reasons, we require additional information to verify your account (philipling@cuhk.edu.hk)</p> <p>Edge is out of date</p> <p>Out-of-date browsers are a security concern. Check for Edge updates in Windows Update.</p> <ul style="list-style-type: none"> <li>✓ Latest version - Recommended</li> <li>▲ Your version - Over 5 months out of date</li> </ul> <p><a href="#">See how to update Windows</a></p> <p>Skip &gt;</p> <p>itsc Information Technology Services Centre The Chinese University of Hong Kong</p>

<p>6. <b>Uncheck</b> Allow my organization to manage my device, and <b>click “No, sign in to this app only”</b> to continue.</p>	
<p>7. You will then find <b>Virtual Desktop</b> displayed and it also means that the subscription has been successfully made.</p>	

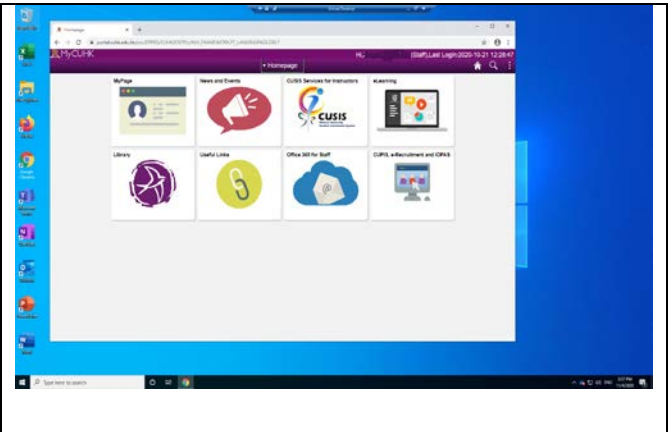
## D. Connect to WVD

<p>1. Click <b>Virtual Desktop</b> to launch the virtual desktop.</p>	
---	--

	
<p>2. Enter your credentials with</p> <p>User name: <b>CUHK email address</b> (i.e. <a href="mailto:alias@cuhk.edu.hk">alias@cuhk.edu.hk</a>) Password: <b>CUHK OnePass</b></p>	
<p>3. After password authentication, you will be prompted to provide your DUO 2FA from your device.</p>	
<p>4. A virtual desktop will then be displayed with applications including</p> <ol style="list-style-type: none"> <li>Office Applications: Word, Powerpoint, Outlook, Excel</li> <li>Browsers: Microsoft Edge, Firefox, Chrome</li> </ol>	

5. You can now open any browsers to access the following applications
- CUSIS
  - CUPIS
  - PG Admission System (GS Platform (Division))
  - UG Admission System

Note: To reduce the risk of data leakage, copy-and-paste/drag-and-drop files to/from WVD are disabled. Instead, users may use OneDrive and SharePoint to upload or download files.



Prepared by: Information Technology Services Centre

Last Update: Nov 2020

Copyright © 2020. All Rights Reserved. Information Technology Services Centre, The Chinese University of Hong Kong