

SCHOOL OF ARCHITECTURE · CUHK · 2021 - 2022





Message from the Director

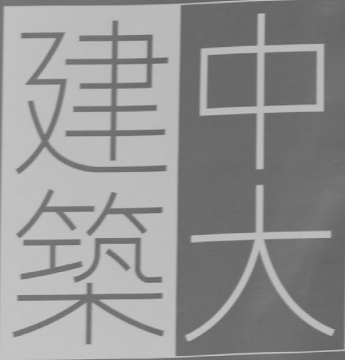
Despite the challenges in the past years, the School of Architecture looks ahead in the hope of addressing pressing environmental and social issues, fostering a culture of experimentation, and building a stronger link of design and research. We are very pleased that – according to the current pandemic condition – we will return to on-campus teaching and learning and social activities soon. We embrace the University's plans to resume face-to-face education, while reflecting on last year's experiences in online education to reconsider the best approaches for the new normal.

With the new leadership, the direction of the School will not be radically changed. CUHK's Architecture and Urban programmes have built a strong legacy thus far. After the recent curriculum change, our focus will shift to calibration and optimisation. There will also be new initiatives which respond to local and global challenges and trends. These will encompass (1) a stronger alignment of the School's learning objectives with the UN Sustainable Development Goals and New Urban Agenda, particularly on climate action, social inclusion, and health; (2) the boost of internationalisation with more exchange opportunities and international collaborations; and (3) the boost of digital literacy and skills. At the same time, the School will invite initiatives of students and colleagues.

The School will proactively support diversity and gender equality. Last year, we took collective measures to rebalance the composition of the teaching team and attract new talents. The master curriculum was revised, and will offer in the coming academic year a selection of 12 studios, each exploring a specific question of how to reinvent the future practice. The history and theory courses were reorganised to present a wider range of perspectives reflecting Hong Kong's wider role in the Asian region and global links.

With the School celebrating its 30th anniversary, we are planning a series of activities and events to strengthen our community of students, alumni, local and international partners. The School's alumni association has made a particular contribution with their launch of a new mentorship programme and lecture series, to support our students' development and transition into practice.

Hendrik Tieben
Director and Professor
School of Architecture



School of Architecture

THE CHINESE UNIVERSITY OF HONG KONG



Contents

Message from the Director	3
Programme Overview	6
Curriculum	8
Calendar	10
BSSc (AS)	
Overview	12
Explore I	14
Explore II	16
Studio A	18
Studio B	20
Studio C	22
Studio D	24
MArch	
Overview	26
MArch Design Studios	28
Required Courses	40
Elective Courses	41
MSc (Urban Design)	44
MPhil-PhD	48
Faculty	52
Events	54
Summer Activities	56
30th Anniversary Celebration	60
Student Exchange	62
Awards and Scholarships	64
Location	68

Programme Overview

Professional Programmes

BSSc (AS) Architectural Studies

The Bachelor of Social Science (Architectural Studies) – BSSc (AS) – is the first part of a two-degree sequence in professional architectural education. This sequence is designed to provide a basis for education in general and preparation for professional work as an architect in particular. Students are encouraged to enrich their core of studies in architecture by exploring lateral relationships with other subjects and disciplines as well as through independent study and experience of other cultures. The core of studies consists of design studios in addition to courses offered in humanities, technology and profession.

MArch Architecture

The Master of Architecture programme – MArch – is the second part of a two-degree sequence in professional architectural education. It is a taught postgraduate programme for students who intend to become architects upon their graduation. The programme offers a series of research-based advanced studios and independent design explorations which both articulate an intellectual position and demonstrate the impact of that position in design. Applicants should have a pre-professional architecture degree (equivalent to HKIA or CAA accreditation), such as the BSSc (AS) from CUHK, and relevant work experience.

Joint Programme

BSSc (US) Urban Studies

The Bachelor of Social Science (Urban Studies) – BSSc (US) – is designed for students to explore the complexities and challenges of the rapidly evolving urban world, global urbanisation processes and various strands of urbanism. It is jointly organised by the Department of Geography and Resource Management and the School of Architecture, with input from various departments in the Faculties of Social Science and Arts. Besides the learning of theories of urban development, the rigorous application of skills and techniques for urban analysis, and the contextual understanding of sustainable practices, students are required to develop expertise in concentration areas such as urban planning and design, urban environment, urban policy and governance.

Postgraduate Programmes

MSc Urban Design

Over the past decades, Hong Kong and the Pearl River Delta have been a laboratory for urbanism. Rapid urban growth, mass migration and new policies have led to new urban forms, but environmental deterioration and social imbalance have also increased. Urban design can play an important role to create more liveable and sustainable cities if it is able to integrate knowledge about ecological, economic and social issues and is based on a clear set of values. The MSc programme in Urban Design is based on a fundamental understanding of environmental and urban economics as well as urban history. Combining design studios and focused course modules, it aims to integrate specific knowledge about urban processes, complex ecosystems and transport networks. The modules act as catalysts for the studio projects, and are organised as think tanks in which students discuss with experts from academia and practice. After an additional period of professional experience, graduates can apply for professional registration from the Hong Kong Institute of Urban Design (HKIUD).

MPhil and PhD

The MPhil and PhD are research postgraduate degrees. Students learn primarily by conducting independent original research, usually through participating in the work of the School's design studios or design research units in Chinese architectural heritage, community participation, computation and simulation, sustainable and environmental design, housing, etc. In some cases, students may also pursue their own topics if feasibility of the topic can be demonstrated upon application.

Curriculum

	Studio	Humanities	Technology	Design Computation	Professional Practice	Electives and Year I Faculty Package		
	BSSc(AS) 1	<i>arch 1001</i> Introduction to Architecture: People and Places				Students elect two non-architecture courses from the Social Science Faculty Package (except advanced standing students who elect one).		
8	BSSc(AS) 2	<i>arch 2111 / arch 2112</i> Introduction to Architectural Design I & II [Explore I / Explore II]	<i>arch 2221</i> Visual Studies <i>arch 2322</i> Cultural Contexts I <i>arch 2323</i> Cultural Contexts II	<i>arch 2413</i> Building Technology I: Materials and Construction <i>arch 2422</i> Building Technology II: Materials and Construction	<i>arch 2222</i> Digital Media			
	BSSc(AS) 3	<i>arch 3113 / arch 3114</i> Architectural Design Studios I & II [Studio A / Studio B]	<i>arch 3321</i> Architecture and Global Culture <i>arch 3721</i> Land and City	<i>arch 3424</i> Building Technology III: Environmental Technology				
	BSSc(AS) 4	<i>arch 4115 / arch 4116</i> Architectural Design Studios III & IV [Studio C / Studio D]		<i>arch 4425</i> Building Systems Integration	<i>arch 4426</i> Future Practice and Sustainable Response			
	total units	78	30	18	12	3	3	12
Year Out								
	MArch 1	<i>arch 5111 / arch 5112</i> Advanced Architectural Design Studios I	<i>arch 5321</i> Architectural Theory and Criticism	<i>arch 5421</i> Advanced Building Systems I <i>arch 5422</i> Advanced Building Systems II		<i>arch 5131</i> Topical Studies in Design Theory <i>arch 5231</i> Topical Studies in Computational Design <i>arch 5331</i> Topical Studies in History, Theory and Criticism <i>arch 5431</i> Topical Studies in Building Technology <i>arch 5531</i> Topical Studies in Professional Practice and Management: Future Practice and Sustainable Response		
	MArch 2	<i>arch 6113 / arch 6114</i> Advanced Architectural Design Studios II	<i>urbd 5703</i> Urban History and Theory (to substitute <i>arch 5721</i>)		<i>arch 6521</i> Professional Practice and Management	<i>arch 5731</i> Topical Studies in Urbanism		
	total units	52	28	6	6	3		9

Calendar

2021-22 Term 1

week	event	date
1	First teaching day	06.09 M
2		13.09 M
3	Day following Mid-Autumn Festival	20.09 M 22.09 W
4	National Day	27.09 M 01.10 F
5		05.10 M
6	Chung Yeung Festival	11.10 M 14.10 Th
7		18.10 M
8		25.10 M
9		01.11 M
10		08.11 M
11		15.11 M
12		22.11 M
13		29.11 M
14	Examination period begins	06.12 M 08.12 W

2021-22 Term 2

week	event	date
1	First teaching day	10.01 M
2		17.01 M
3		24.01 M
4	Lunar New Year holiday begins Lunar New Year holiday ends	31.01 M 05.02 Sa
5		07.02 M
6		14.02 M
7		21.02 M
8		28.02 M
9		07.03 M
10		14.03 M
11		21.03 M
12	Reading week begins	28.03 M 01.04 F
13	Ching Ming Festival Reading week ends	04.04 M 05.04 Tu 09.04 Sa
14	Easter holiday begins	11.04 M 15.04 F
15	Easter holiday ends	18.04 M
16	Examination period begins	25.04 M 27.04 W

BSSc (AS)

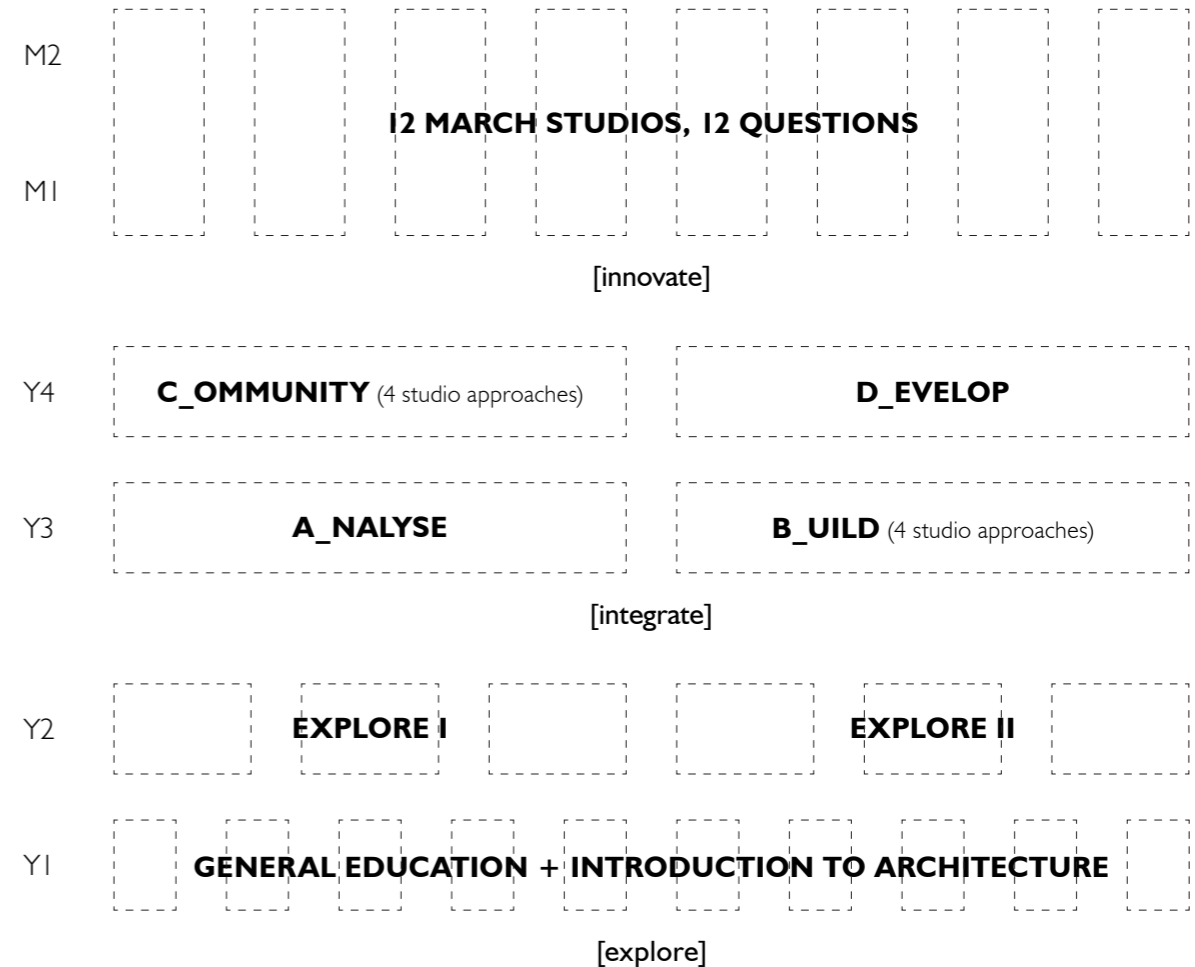
Programme Director
Patrick Hwang

The Bachelor of Social Science (Architectural Studies) programme offers education on design thinking in general and preparation for professional practice as an architect in particular. The core of studies consists of design studios in addition to courses and electives offered in humanities, technology, representation and professional practice. The interplay of learning experience is accomplished by exposing the learners to engagement with a wide variety of processes, to work with tools and materials; communicate ideas through drawing, making, writing and speaking; understand the technical challenges of architecture; engage the society in an impactful and ethical manner, and most importantly *to think critically*.

After a rich Year 1, exploring the University's General Education programme, including an *Introduction to Architecture*, Year 2 *Studio Explore I & II* will be offered through a series of intensive skill and knowledge acquisition modules. In years 3 and 4, the sequence of *Studio Analyse*, *Studio Build*, *Studio Community*, and *Studio Develop* will investigate the relationship between analysis and synthesis by studying canonical built works; explore the poetics of material, tectonic, technic, and the craft of detail; address the interdependence between people, architecture, city and the environment; and finally a graduation studio integrating the skills and knowledge obtained in the semesters prior and culminates in a comprehensive architectural design.

The required courses reflect a changing pedagogic approach and cross-disciplinary practice. The courses are organised through an *analytical case-study method* that bridges across the subject area of humanities, technologies, and communications. This approach seeks to explore the culture and history of architecture through a focused examination of the works of architecture. The programme mirrors professional development in other disciplines by moving from intense skill and knowledge apprehension in the early years to a focus on application and integration by Year 4.

Studio structure



Explore I

DESIGN STUDIO

arch 2111



pole dance, 1927, oskar schlemmer

Architecture is by nature a doing word: both in its creation – we observe, study, imagine; we explore, research, test; and in its outcome – it is occupied, experienced and materialised; it constructs, organises and extends. Architecture is DESIGNED. Learning to do architecture involves a particular kind of learning. As a mind wishing and willing to take on the challenges and responsibilities of 'architecting' we must become a student of the ways in which the minds of fellow architects think and work.

arch 2111 + arch 2112 explore creative process, the realms of imagination, art and design practices in viewing, experiencing, reading and, ultimately, producing form. Skills of representation and fabrication are introduced in the context of the development of each student's capacity to observe, interpret and translate design concepts into physical form. The studio is organised in modules, exploring the articulation of a fundamental architectural / spatial concept with a specific design-related action: doing + communicating: modes of marking; seeing + abstracting: modes of analysis; space + time: modes of narrating; reality + imagination: modes of materialising; volume + light: modes of shaping; and body + ritual: modes of experiencing.

The aim is to expose the students to a precise and rich set of tools and armatures; a spectrum of design skills and transformations to introduce the art of architecture as a design process and language that activates, mediates and politicises the built environment and its subjects.

REQUIRED COURSES

Visual Studies

arch 2221 Kelly Chow t1

This course introduces visual media, examining how its history and ideas can help develop our critical understanding of spatial design. The course offers an overview of the subject for those with little or no visual art + design background and is intended to provide a sense of visual literacy. The course is designed to develop skills of observation, interpretation and creativity, as well as giving a strong intellectual grounding in visual thinking, and the form, meaning and content of visual media.

Cultural Contexts I

arch 2322 David Demie t1

This course explores historical buildings as 'windows' into history. It celebrates the diversity of architectural traditions and the manifold ways in which architecture has connected to cultures, religions and ideas across time. It asks what is the relationship between architecture and history - how can we use the study of buildings, and the way they are designed and made, to learn about the past? How is history useful for thinking about architectural design?

Building Technology I: Materials and Construction

arch 2413 Xu Liang t1

Establishing on the fundamental principles of statics, the course investigates primary types of structural system in architecture by focusing on their behaviour as well as design parameters. Students will use the method of graphic statics to derive the internal forces and reactions for a few types of determinate structures and will develop an in-depth understanding of structural principles through appraising and investigating in case studies.

SSF PACKAGE

Design Thinking in Social Innovation

sosc 1001 Maggie Ma t1

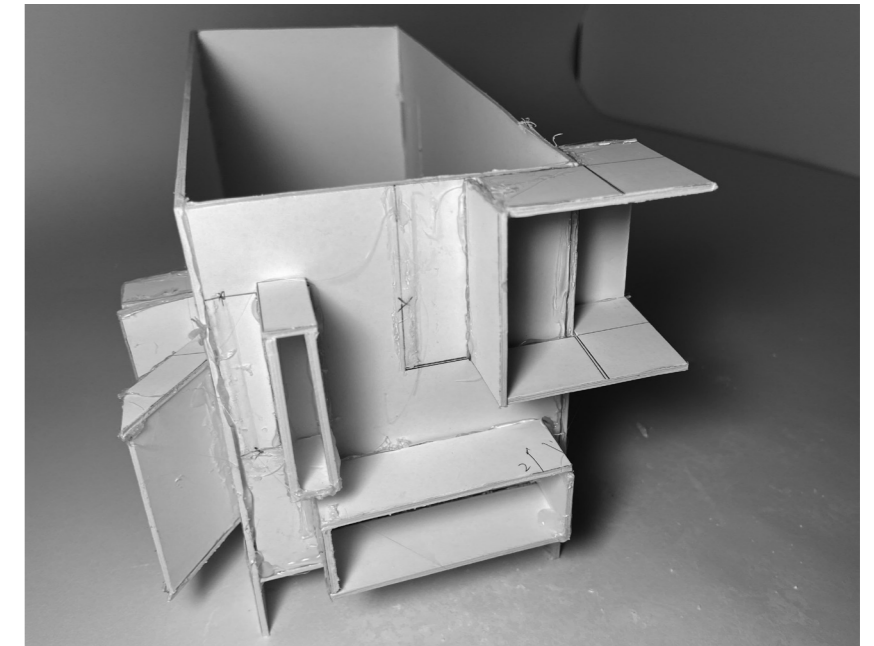
Design thinking creates value through systematic innovation. This course introduces students to design thinking theories, methods and skills to apply in the context of social innovation. Design thinking supports development of human-centric solutions, and uses a design-based mindset to provide practical solutions to complex problems. Through interactive experiential learning, students will learn the key concepts and methods in design thinking and apply them to solve a real life social issue.

ACTIVITY

Digital Learning

Modules provided by the Institute of Digital Design (IDDA) are available for self-instruction. This is an online e-learning platform for digital design tools. Modules for term I include: Adobe CC (Photoshop + InDesign).

Kelly Chow / Han Man / Ioana Pricop / Xu Liang



chiu yiu chun, jay

Explore II

DESIGN STUDIO

arch 2112



chapelle notre-dame du haut (ronchamp), 1955
le corbusier

The second core studio builds upon the tools and processes introduced in arch2111 and further explores creative process. The process of design is an integral part of daily human life even though we usually think of it as limited to 'design problems' exercised by 'designers'. To act on human intention is to design. What we do as architects is understand whatever there is to understand to bring about built form. The process of design is both a cognitive process and a process of several steps and stages to reach an intended 'design'. In both cases the study of the process is closely related to the product. The process is implied by the product. In brief, the process of design is not an abstract one. It must be seen integrally in terms of products. It must be studied and practiced in terms of products. It must be advanced in terms of skills and knowledge particular to those products. In education the work is an instrument to mastering the process.

The studio continues the module format, exploring the articulation of a fundamental architectural / spatial concept with a specific design-related action: mapping + measures: modes of surveying; field + boundary: modes of grounding; environment + interface: modes of balancing; craft + assembly: modes of constructing. Group projects, individual assignments, critiques, discussions, research and studio sessions continue to provide students an opportunity to work through issues and ideas within a social, cultural and personal context.

REQUIRED COURSES

Digital Media

arch 2222 Jeroen van Ameijde t2

This course introduces students to the principles of computational design, giving an overview of applications across different scales and stages. Students will develop insights and confidence around the integration of generative procedures within architectural and urban design processes, learning how to control elements within a three dimensional environment. Focusing on the underlying logic rather than specific software, the course helps to build up essential skills needed to participate in current and future practice.

Cultural Contexts II

arch 2323 Thomas Chung t2

This course emphasises the importance of understanding architectural history and theory with respect to culture and context. There is a specific focus on 20th century architects and buildings, a range of key architects' philosophies and approaches and the relationship between architecture and the arts. Students will study architectural works with respect to historical continuities and ruptures, as well as explore the unity of forms and diversity of solutions.

Building Technology II: Materials and Construction

arch 2422 Zhu Jingxiang t2

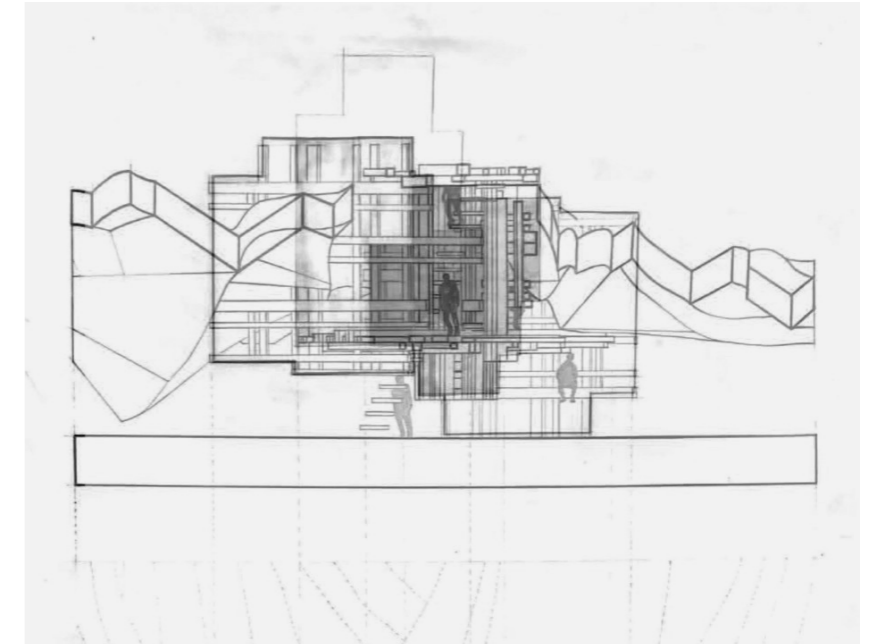
The course is designed for studies in materials and construction with an approach based on operation and observation exercises. The process of integrating knowledge framework, observation skill and exploration ability related to architectural and construction practice is emphasised. Students will learn to appreciate the essential knowledge of basic building materials, the ethics of using materials and the importance of tectonic and technical issues.

SSF PACKAGE

Introduction to Architecture: People and Places

arch 1001 Kelly Chow t2

This course explores the discipline - its rich relationship with society - and its global impact. The course addresses architecture as a continuous field in flux - presenting case studies that cut across and unfold to show alternate, sometimes contradictory stories about art and design. Through a series of lectures and readings, along with a set of critical terms specific to these times and places, the class aims to foster a rich, complex understanding of the many narratives that the built environment can tell.



cheng nga man, anthea

Kelly Chow / Han Man / Xu Liang / Melody Yiu

Understanding Cities

arch 1002 Melody Yiu t1

This course will introduce basic ideas about urbanity and cities for students of the social science faculty. Initiated from an architecture-urbanism perspective, this course will cover cross-disciplinary material on inter-related social, spatial and economic issues. Through seminal text and contemporary media, it aims to equip students with essential knowledge to participate in discussion about cities and urban life.

GENERAL EDUCATION

Experiencing Architecture

arch 1320 Han Man t2

The term 'architecture' in this course specifically refers to the built environment. This course teaches a method of experiencing architecture, with the aim to raise students' awareness of the living environment and equip them with the skills to understand and appreciate architecture as it exists locally and in the global context. Apart from a theoretical framework, basic skills of sketching, photo-taking and writing will be taught as tools to facilitate the experiencing of architecture.

Studio A

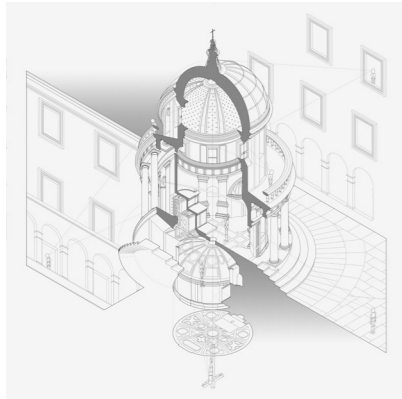
DESIGN STUDIO

analyse

arch 3113

Patrick Hwang / Raffealla Endrizzi / Hiroyuki Shinohara / Yutaka Yano

18



tempietto by branato bramante,
drawn by office nadaaa

This studio focuses on the analytical observation of surroundings and architecture, followed by a series of methodological design inquiries and transformations. The studio studies canonical buildings of architecture through analysis and dissection, emphasising the connection between form, structure and tectonics. The latent knowledge created by the inquisitive process will inform the design project in the second stage.

In Studio A, students learn to analyse through the act of drawing and modeling. The activity will encompass the examination, interrogation, observation, deconstruction and dissection of a topical subject and a canonical building. Through the discriminatory actions of drawing and model making students identifies critical findings of the 'thing' being examined to reveal its key essence. The learned knowledge will be applied to the design of an observatory building.

REQUIRED COURSES

Land and City

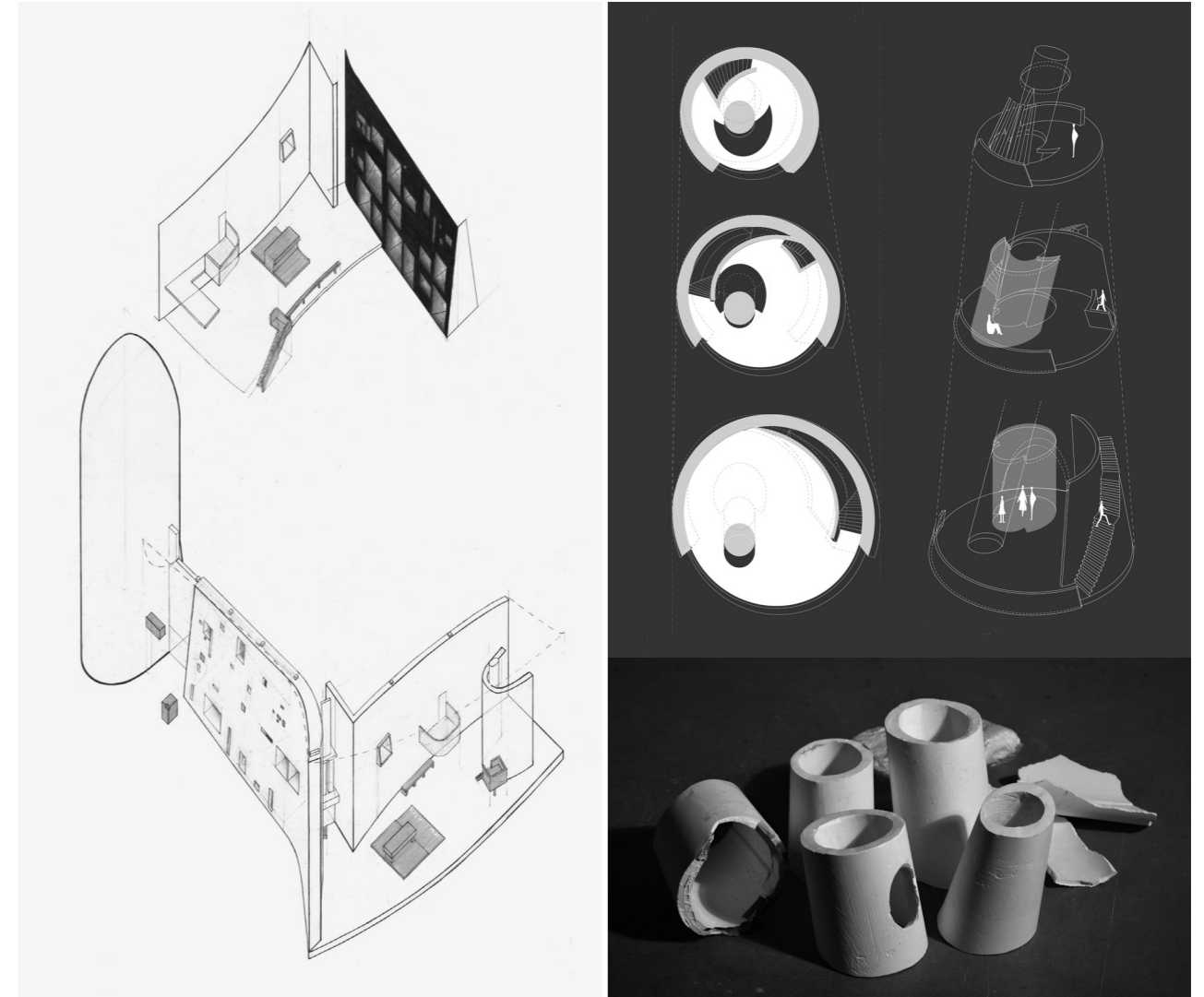
arch 3721 Francesco Rossini t1

This course introduces fundamental concepts and ideas of urban design and planning starting from a historical perspective, introducing important theories to analyse and understand the dynamics and complexities that characterise the urban environment. The course aims to develop the essential knowledge in the field of urban planning and design by investigating the critical role that the architecture, combined with the interdisciplinary approach of urban design, can play in creating a better and more livable and sustainable city.

ACTIVITY

Digital Learning

Modules provided by the Institute of Digital Design (IDDA) are available for self-instruction. This is an online e-learning platform for digital design tools. Modules for term I include: Rhino + Grasshopper, Revit.



19

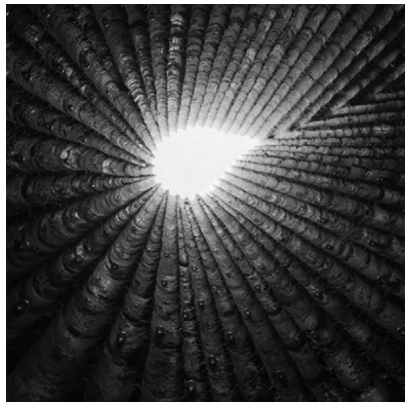
from left to right: chan tung hoi, peter; cheung yi, yvonne

Studio B

DESIGN STUDIO

build

arch 3114



Studio B is the second part of the design studio for Year-three students that aims to learn to design in relation to building. It approaches architectural issues through the role of building technology in architectural design. The studio focuses on materials, techniques and tectonics studies that expose and inform design opportunities and solutions. The central question to ask is what relationships can be established between users, environment, space, structure and technology, and how they can be intertwined and synthesised. The studio's emphasis is placed on experimentation through act of making as a way of discovering. Moreover, the studio projects involve design in broader body of contexts of what it is made, such as related architectural theories, design technologies, pragmatic issues and innovation with the intention to learn to think critically through making.

The studio encourages the notion that build-ing is an act of making for design inquiries. Students will learn to build by working with real materials and different tools for specific tasks of design and making. The studio activities will engage students in observing, questioning, experimenting, composing, constructing and synthesising multi-scale parts to a whole building. Observing and experimenting with materials and tools will allow students to reveal inner workings of material characteristics, ways of composing and joining, assembling building, and connecting it to the contexts that produce it. Studio B will revolve around the design of a building with structural and constructional challenges and focuses on environmental issues.

REQUIRED COURSES

Architecture and Global Culture

arch 3321 Tatjana Crossley t2

This course examines the built environment through filmic representations of the city. It will interrogate the urban landscape looking at various cities and considering the historical, social, economic and political influences that have created their existing conditions. Each week there will be a film viewing followed the next morning by a lecture and discussion that delves into the respective 'place'. Students will also use film to develop their own critical reflection of Hong Kong.

Building Technology III: Environmental Technology

arch 3424 Edward Ng t2

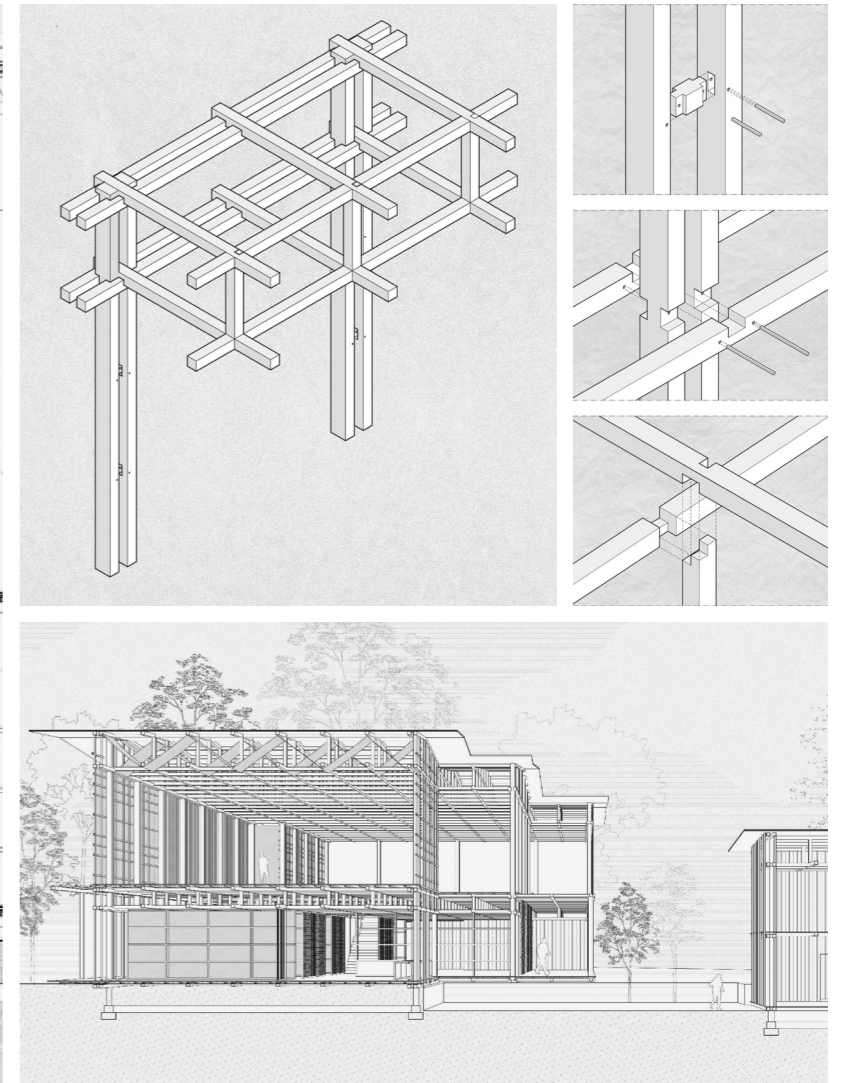
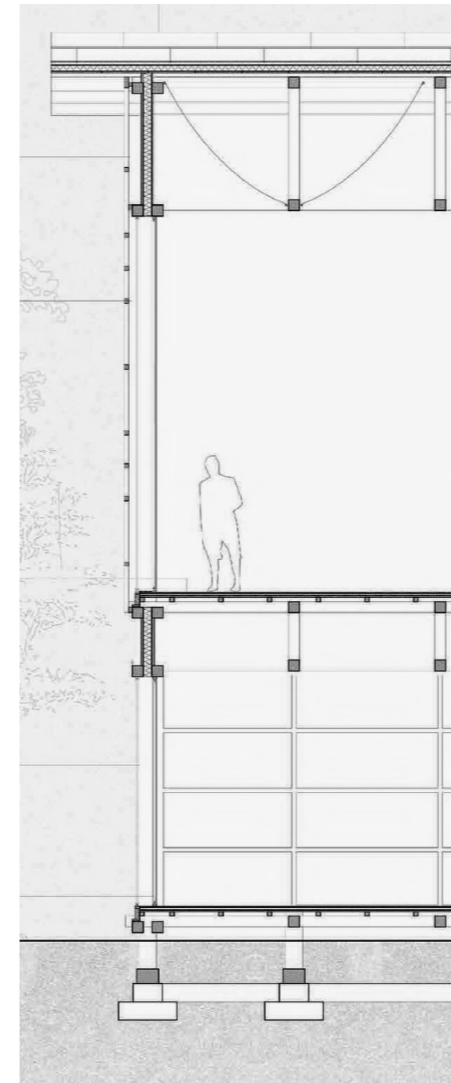
This course introduces the fundamental concepts of passive environmental design, and examines the effect on buildings and their occupants of environmental conditions of light, temperature, air movement, and sound. Case studies are used to review both traditional and current approaches of representative building types in depth.

ACTIVITY

Digital Learning

Modules provided by the Institute of Digital Design (IDDA) are available for self-instruction. This is an online e-learning platform for digital design tools. Modules for term2 include: *Revit (plug-ins for lighting and wind simulation)*.

Hiroyuki Shinohara / Maggie Ma / Edward Ng / Francesco Rossini



li yuen ching, rani

Studio C

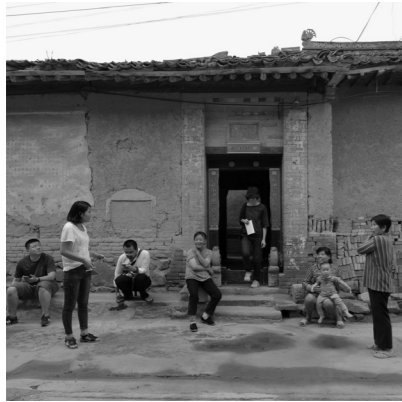
DESIGN STUDIO

community

arch 4115

Francesco Rossini / Maggie Ma / Mo Kar Him / Paul Tse

22



Making cities and human settlements safer and more inclusive, resilient and sustainable is at the core of Goal 11 of the UN-Habitat. Nowadays the residential market is dominated by economic interest, and most cities in different areas of the globe face the lack of affordable rental apartments for low-income households. The French architect Christelle Gautreau argues that new form of housing emerge to answer to new needs of the population and that 'coliving has begun to transform our notions of ownership and habitat'.

Responding to the need to address joint issues of sustainable housing and urban development, the Community Studio aims to speculate architecture's role in shaping the urban environment by conceptualising alternative typologies of collective living. The four sections of the studio will explore how collective living concepts could be adapted to different social context and urban conditions.

Students will focus especially on the relationship between collective spaces and living units as well as to explore how to generate meaningful interactions between the residents and the rest of the city. Combining hybrid programs with shared and collective facilities, students have to accommodate the diverse needs of the community. The opportunity of sharing, the mixing of household types and uses, and the blurring of physical boundaries between private and public realm are the objectives to re-define different approaches that co-living spaces present to architects and designers.

REQUIRED COURSES

Building Systems Integration

arch 4425 Hiroyuki Shinohara t1

This course builds upon fundamental topics covered in the building technology sequence—materials and construction, building structures and environmental technology - with the objective to introduce an overarching perspective of the design and integration of the building systems in making of a building. Through case studies of modern and contemporary buildings, it investigates the building systems integral to an architect's vision and design intent and serves to make critical design decisions.

ACTIVITY

Digital Learning

Modules provided by the Institute of Digital Design (IDDA) are available for self-instruction. This is an online e-learning platform for digital design tools. Modules for term I include: *Rhino + Grasshopper*.



left: wong ho yuen, lau sai yam, sit chi man; right: chiu chung yin, lau yuk fan, lee sin yan, tsang siu kiu

23

Studio D

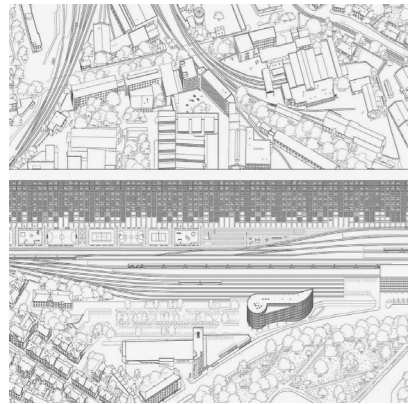
DESIGN STUDIO

develop

arch 4116

Patrick Hwang / Fergus Comer / Sebastian Law / Yuet Tsang Chi

24



proposal for a living / working unité d'habitation, by dogma

REQUIRED COURSES

Future Practice and Sustainable Response (start from 2022-23)

arch 4426 Maggie Ma t2

This course prepares students to practice through the understanding of fundamental roles and values of an architect, with discussions on professional conduct and procedures related to practising as an architect. It is designed to inspire students to look beyond the customary, and consider the ever-changing environment of the future, through the study of alternative possibilities in architectural and spatial practices.

ACTIVITY

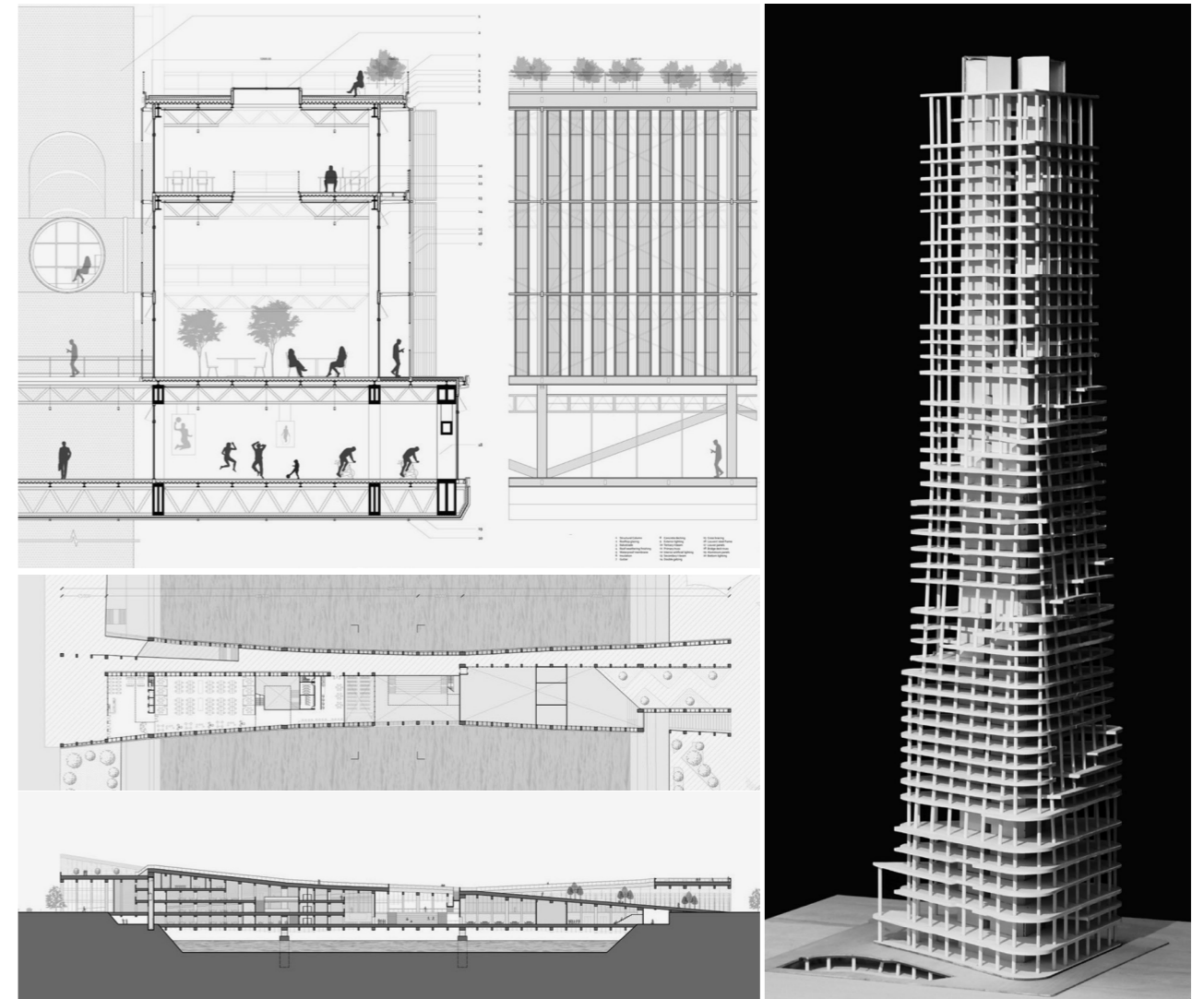
Digital Learning

Modules provided by the Institute of Digital Design (IDDA) are available for self-instruction. This is an online e-learning platform for digital design tools. Modules for term2 include: Rhino + Grasshopper.

Studio Develop integrates the skills and knowledge obtained in the prior five semesters and culminates in an integrated architectural design. Infusing program, site, material and tectonic, which are central to the development of architectural form. Program is both the reality of functional use, and the scenarios of imagined narratives. An architectural Site consists of an urban context or a condition of landscape, and the cultural understandings that influence the reception of a built intervention. Material, which may seem straightforward, real and direct, contains questions regarding the status of nature, artifice, and craft. The Tectonic idea and the articulation of a building's assembly is never as simple as revealing the construction and is often as much about what is concealed as it is about what is revealed.

The studio asks students to examine and engage these terms as dynamic, shifting and historically contingent. The studio tackles the integrated project by focusing on the general and the particulars of the building's organisation, structure, systems, skin and its integration.

25



left from above to below: simon sit, beverly chan; right: chan tze kwan

MArch

Programme Director

Peter W. Ferretto

The Master of Architecture at the School of Architecture is a two-year programme designed to provide students with an advanced educational experience focused on design innovation, specialised research and critical thinking. The programme stresses the importance of architecture as a humanistic discipline concerned with the design of habitats in diverse social and ecological conditions. The programme's aim is to engage with a wide range of critical issues, teaching methodologies and design agendas that reflect the changing conditions of contemporary practice and emphasise the profound relationship of architecture to the broader problems of the environment and ecological sustainability. The position of the School, situated within the Faculty of Social Science, offers a unique opportunity for interaction and interdisciplinary research.

Advanced Architectural Design Studio

The design studio is the lens through which students develop their architectural identity, fostering a speculative thinking environment that encourages innovation and experimentation. Through the studio, students are able to hone their research skills, develop high-level design proposals and learn to articulate a refined project. Studios are structured around two yearlong projects, a pre and a final thesis, organised into vertical studios where students learn from their peers and work collaboratively. MArch students are encouraged to pursue their own individual paths within a design agenda established by the studio tutor, who forms the objectives of each studio.

Architecture is the Question, not the Solution

The strength of a school of architecture lies in its ability to question the world we live in and not take things for granted. The vision for the MArch programme is to develop a culture of inquiry, where students discover, mutate and broadcast ideas. Paradoxically to achieve this goal, the school's task must focus on teaching students to 'unlearn', allow them to discover and explore through mistakes. We have to be confident and learn to challenge the profession, embrace academic freedom and encourage debate.

12 Design Studios, 12 Questions

The programme offers 12 Design Studios that question a variety of agendas connected with our city. Each studio has its own agenda, ambition and is committed to a specific form of applied architectural research:

1. *CAN HONG KONG STILL MAKE THINGS?* - Peter W. Ferretto
2. *HOW DO WE DESIGN FOR EVERYDAY CULTURE?* - Inge Goudsmit
3. *WON'T YOU BE MY NEIGHBOUR?* - Simon Hsu | Clover Lee
4. *HOW CAN MTR BUILD COMMUNITIES BUT NOT JUST REAL ESTATES THAT NO ONE CAN AFFORD?* - Tat Lam
5. *HOW TO CO-CREATE REGENERATIVE LANDSCAPES?* - Thomas Chung
6. *WHY ART MUSEUMS?* - Chan Chi Yan | Juan Minguez | Betty Ng
7. *HOW DO WE SENSE SPACE?* - Tatjana Crossley
8. *CAN WE CONSTRUCT A CHANGE?* - Zhu Jingxiang
9. *HOW WILL WE ASSEMBLE?* - Adam Fingrut
10. *HOW CAN YOU MAKE A SUPER LINK?* - Wang Zhenfei
11. *WHAT IS DESIGN BEYOND BOUNDARIES?* - Wataru Shinji | Lily Zhang
12. *WHAT IS THE PURPOSE?* - Claude Bøjer Godefroy | Elva Tang

Structure

All Design Studios are subdivided into 4 parts, leading to a final project developed over 29 study weeks.

Part 1 – QUESTION

Students start their design journey by establishing a research process, understanding and challenging the brief, contextualising the topic and articulating a position. They are introduced to multiple Design Research Methods: Understanding Context, Architectural Surveying, How to Assemble Material, Systematic Observations, Human Behaviour.

Part 2 – CHALLENGE

During this design experimentation phase, students formulate ideas by testing propositions. Emphasis is placed on the synthesis of research within a design framework. A broad range of teaching methods are adopted to reflect the agenda and context of the studio. At the end of this phase, all studios have an integrated trip.

Part 3 – PROTOTYPE

The phase where an idea is translated into a design proposal. Through a process of trial and error students demonstrate that their creative decisions are based on research, analysis and precedent studies. This phase concludes in the development of a 'Technical' dimension, setting out in detail the technical implications of the design strategy, which will be included in the final Project Book.

Part 4 – PROJECT

The final phase focuses on the development of a complex architectural project that addresses the ambition of the brief and ambition of the initial hypothesis. Students must articulate, via an architectural lexicon, a high-level design project that offers innovation, provokes experimentation and articulates a clear architectural discourse.



MArch

DESIGN STUDIO

Peter W. Ferretto

Can Hong Kong Still Make Things?

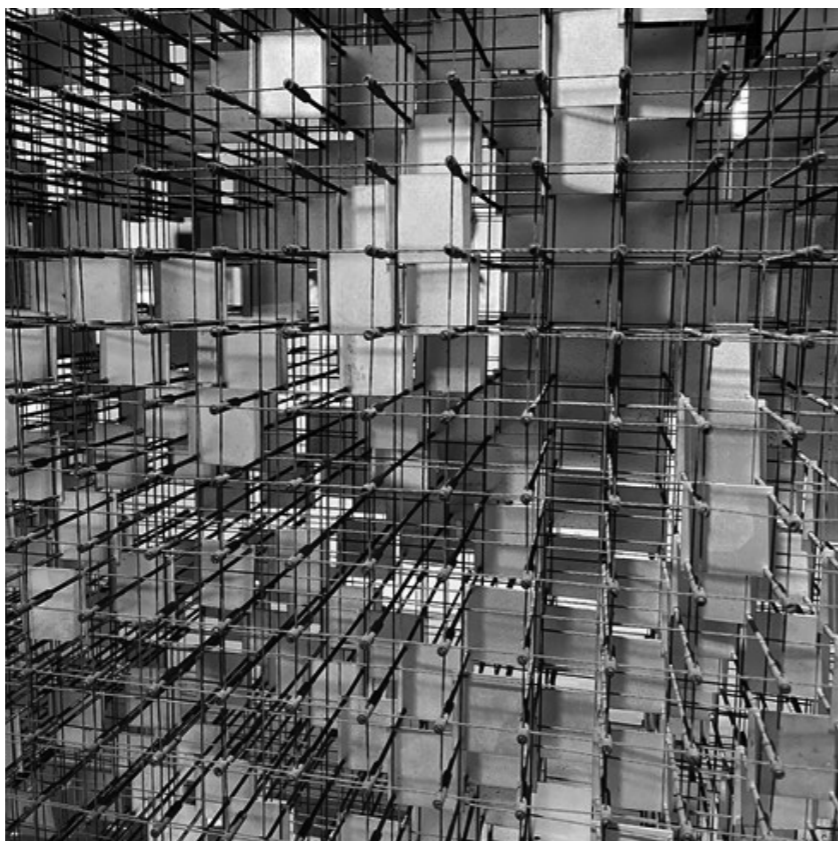
'Starting with the obsession of originality is an ignorant and superficial attitude'. (Alvaro Siza, 1998)

An architectural project is built by constraints. There is no project that is not defined by a set of limits, structural, financial, site, safety... This design studio sets out a question, to interrogate the idea of making in a city that seems to have forgotten its history. Making is both the topic and the way of working of the studio, you will be thinking by making and also designing a building about making. Like a riddle, i.e. sometimes difficult and confusing where you have to find the meaning. You will be given every freedom to challenge the question, the constraint that the studio sets out is that you do this through making.

The studio is broken down into three stages: Stage 1. Country Dilemmas Competition, Stage 2. Make Hong Kong Atlas, Stage 3. Institute for Making, each interrogating a specific question, that together amount to formulating an architectural project about the future of our city.

Biography

Peter's research focuses on understanding urban/rural territories through design prototypes. His research subjects include architectural urban typologies of Seoul, residual urban spaces of Hong Kong, everyday urban conditions, contemporary background city, reactivating the social spaces of Chinese ethnic minority villages and prototype solutions for a self-build timber house in rural China.



enzo mari - struttura 744 (1964)

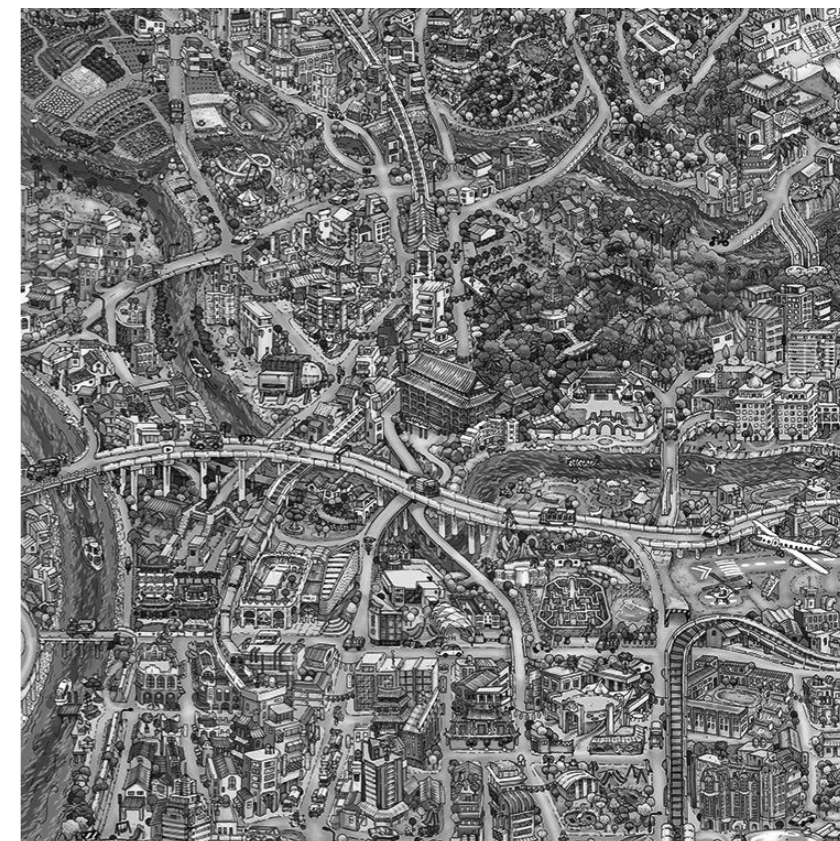
Inge Goudsmit

How Do We Design for Everyday Culture?

The Urban Politics Studio will continue to focus on investigating architecture in relation to urban political dynamics, through looking at it from the perspective of the city and its users. One of the studio's intentions is to raise awareness of the complicity of architecture with politics, financial and industrial interests and address them. This year, we will use Taipei as a laboratory for urban research and design. We will focus on designing for culture, exploring the tension between the high-brow culture and the arts, and the low-brow culture of everyday life. These two come together in the old, vibrant and dense Shilin night market of Taipei, featuring the new iconic Taipei Performing Arts Center (TPAC), designed by OMA. With the project due for completion, this is a particularly interesting moment to discover if and how it will be incorporated into the existing city fabric. What does culture mean? Can it be designed for, or does it need to grow naturally? Why do iconic architectural projects pop up in every major Asian city? Is architecture a tool to attract tourism, or is it serving the local community?

Biography

Inge is teaching and conducting research in architecture and urban design with a focus on urban politics. Her research interests are situated at the boundary between architecture and social sciences, and focus on the influence of transnational and local forces on the production of iconic architecture. She concentrates her research on cultural flagship developments in Hong Kong and analyses their socio-spatial impact before, during and after the construction.



taipei map, courtesy of tom parker

MArch

DESIGN STUDIO

Simon Hsu / Clover Lee *Won't You Be My Neighbour?*

Hong Kong built over 2 million square meters in 2020, of which over 1.3 million square meters is for domestic use. Yet, the housing crisis continues. The government is addressing the shortage issue by re-appropriating land for housing projects in an attempt to solve the quantity problem; but what about the quality of the housing that has been built and that is being built in our city? What is the architecture that defines us as a collective and have we, as architects, given up on imagining new possibilities?

This studio will focus on seeing architecture as an active participant in shaping communal living and the communal aspects of housing. Not in a nostalgic lens, but embracing the scale of development that Hong Kong has expertise in building, but not designing. Instead of a profit driven model that focuses on quantifiable square footage of the units, we will focus on the qualitative aspects of the shared communal spaces. As such, this studio is optimistic as it sees the design of housing as a means of imagining a better future.

Biography

Simon has in his years of professional experience worked on a wide range of projects. He has worked at Pei Cobb Freed & Partners, Aedas as well as Herzog & de Meuron. He also co-founded io Architects in 2006. Clover has taught at University of California Los Angeles, University of Michigan and Rice University. She is the director of plusClover - its work has been published widely and exhibited internationally.



photograph by michael wolf

Tat Lam

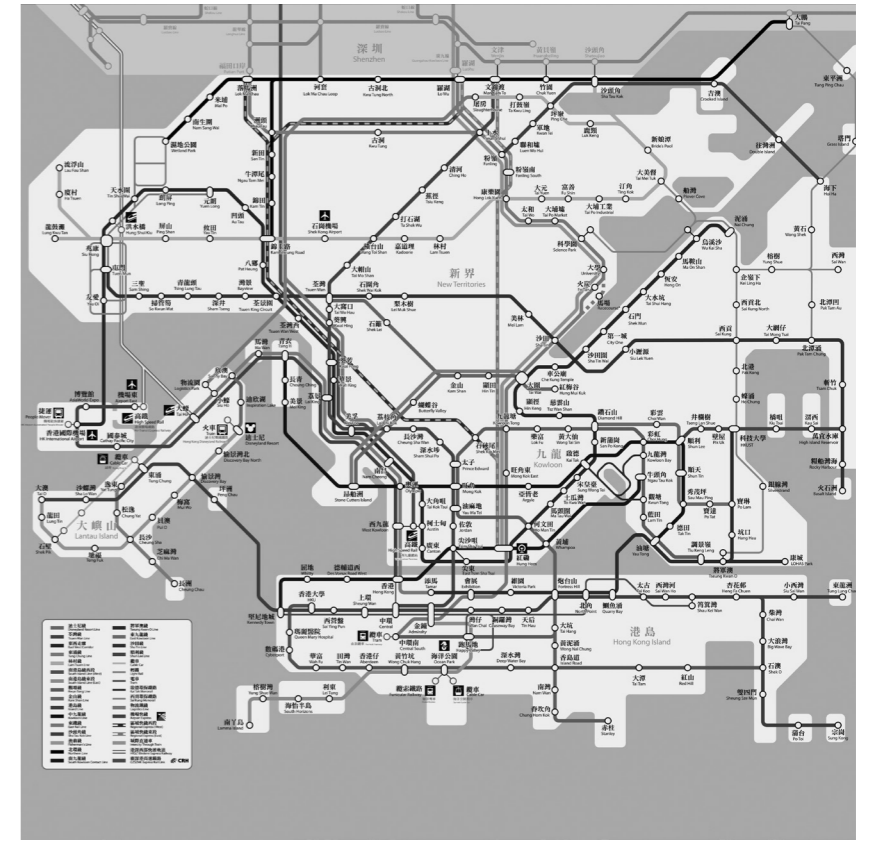
How Can MTR Build Communities but Not Just Real Estates That No One Can Afford?

This studio attempts to imagine the future development along one of the earliest subway lines in Hong Kong, Tsuen Wan Line. More inclusive urban development strategies, bottom-up financing schemes, public-private partnership models will be explored to investigate how public companies like the MTR can contribute to a more equitable public infrastructure development paradigm in Hong Kong.

This year, we will not just research and respond to the needs of the grassroots. We will move towards exploring potential financing schemes to realise the concepts through involving MTR as an imaginary funder. In the studio, multidisciplinary knowledge from urban design, architectural design, development finance, public policy, social entrepreneurship and financial technologies will be involved.

Biography

Tat Lam was trained as an urban designer and architectural researcher, and has practiced in urban design and regional development consultancy in the last 10 years. He is currently the director of Studio X Beijing of Columbia University. He is particularly interested in developing holistic social development solutions for governments and institutions.



iain macdonald

MArch

DESIGN STUDIO

Thomas Chung

*How to Co-create Regenerative Landscapes?
Radical Conservation in Kuk Po, Sha Tau Kok*

32 Regenerative Design goes beyond the 'do less harm' imperative of sustainability to aspire towards a more radical 'do more good' design paradigm. In an age of global climate crisis and exacerbating socio-political polarisations, sustaining the rapidly deteriorating status quo is no longer sufficient. It calls for a proactive, all-encompassing development process to replace 'the present linear system with cyclical flows at sources' (Lyle, 1994) that not only restores but positively regenerates the ecosystem. This studio explores the regenerative approach which understands the contexts of life in place, creates mutually beneficial relationships (Reed, 2007) and co-evolves human-natural and architectural systems in partnered relationships, acting as catalyst for positive environment-behavioural change. We will adopt alternative development strategies and investigate radical architectural positions that enable and build 'capacities of people to design, create, operate and evolve regenerative socio-ecological systems in their place' (Mang, 2012).

Biography

Thomas's research interest involves understanding how architecture contributes to the urban order and culture of the modern city. His research focuses on the interplay of architecture with urban representation and cultural imagination, and the metabolisms of urban vernacular in Hong Kong. Thomas is active in steering, curating and exhibiting at the Hong Kong & Shenzhen Bi-City Biennale of Urbanism / Architecture since 2008, as well as at the Venice Biennale in 2010 and 2014.



kuk po aerial, chau kwai cheong

Chan Chi Yan / Juan Minguez / Betty Ng

Why Art Museums?

In this studio, we pose the question, in light of the new ecologies of the 'Shadow Art World' – an invisible international network of logistics, storage, trades, financing, conservation, archive, and speculation – and given Hong Kong's strategic position, what other models of art 'museum' might be possible in this city? Further to the ambitions of a 'Museum Plus', is there room to push the boundaries and imagine a 'Museum Maximal'? Instead of art existing in the passive confines of a museum, can we instead expose art in the more dynamic realities of an 'exchange'? Instead of another generic 'world class museum' approach, can we look into the realities, workings, needs and constraints of the 'Shadow Art World' to consider new ways to organise spaces and programmatic encounters within a museum? Through a detailed investigation of Hong Kong's key logistics infrastructure, can we imagine new conditions of genuine cross hybrid interaction and bring them to light for the public? Together we provide new scenarios not only for the 'Museum', but also strategies to stimulate elements in the art world's 'shadow ecology' as means to fuel the cultural environment in Hong Kong.

Biography

Betty is the founder and design director at COLLECTIVE. Before setting up COLLECTIVE, Betty was Design Director at OMA Rotterdam, leading many winning proposals and projects. Chan Chi Yan leads the architecture projects at COLLECTIVE. Before that, Chi Yan was at Herzog & de Meuron, serving as project manager for the Tai Kwun Center for Heritage and Arts project. Juan leads the creative direction and architecture projects at COLLECTIVE. Before that, he has worked at OMA, SO-IL and practiced in Madrid with Frechilla & López-Peláez Arquitectos.



film 'raiders of the lost ark's' warehouse scene, indian jones: 'this should be in a museum!'

MArch

DESIGN STUDIO

Tatjana Crossley

How Do We Sense Space?

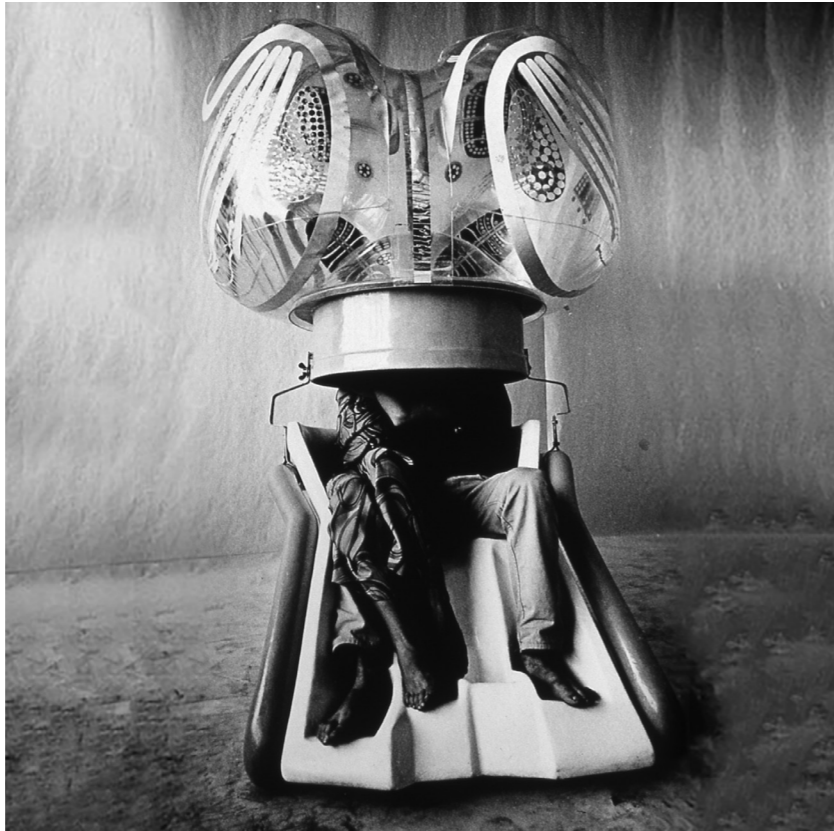
I understand architecture because I have a body from which to understand it.

Sensorial stimuli is crucial for our ability to perceive space. The signals received from the eyes, nose, and skin allow for the brain to create a mental image of our environment. Without them we would not be able to understand our relationship to space in the same way. Historically, humans have produced devices through architecture and art that have allowed them to manipulate their perceptions, many of which come out of an urge to question the status quo.

This studio seeks to challenge current modes of perceiving. We will be designing architecture for the body. Through the development of these provocations we will dissect the value of designing a particular experience for the body and what the implications of this are for subjectivity, the built environment and for the architectural profession in general.

Biography

Tatjana is co-founder of architectural and research practice ArchiTAG. Her research focuses on the sensorial and psychology of immersive environments and virtual realities. She has been examining the development of the body image in relation to how the subject perceives space, themselves within it, and the 'other', using theories from psychology, philosophy, biology, technological sciences, art and architectural history.



haus rucker co., mind expander, vienna, 1967.

Zhu Jingxiang

Can We Construct a Change?

In the past three decades, the advanced construction systems based on panels have become a hot spot attracting investment in developed industrial countries.

'Panelised' refers to components made of panels, or having prefabricated wall, floor, and roof sections which are shipped to and assembled at the building site. 'Panelised' also implies that the construction might be conceived in the functional logic of panels, for instance the spatial perception, the load-bearing mechanism, and the ease of assemblage. Such system design might be inspired by historical reference, or reflection on the operation and the related result. To cope with such a construction system, the design shall articulate various issues such as supply, production, transportation and connection.

This novel construction system brings various opportunities with competitive advantages, empowers commercial and social groups, changes communities and even reshapes the construction industry. This studio is dedicated to exploring this system from multi-dimensional perspective.

Biography

Zhu's research focuses on new spatial structures, lightweight building systems and sustainable building technologies. He has completed dozens of built projects in Mainland China and Kenya, and has won the China Innovator of the Year Award in Architecture from The Wall Street Journal in 2012, First Prize of Local Academia in the Hong Kong Construction Industry Council Innovation Award 2015, etc. He also designed Dou Pavilion for China's national pavilion at the 15th Venice Architecture Biennale 2016.



MArch

DESIGN STUDIO

Adam Fingrut

How Will We Assemble?

This studio explores the role of technology as a conduit for architectural design and construction methods. A rigorous series of design exercises along with exposure to 'making' methods will guide students toward developing their own architectural vocabulary for deployment at different scales and resolutions. At the heart of this studio is an interest in the crafting of beautiful drawings, objects, spaces, and buildings – each with their own unique story nested inside a broader design narrative.

The programme will be focused around three main clusters of design activities entitled The Body, The Gathering, and the Collective. First, students will spend time observing, emulating, and synthesising ergonomics and movement, through a series of drawings, diagrams, models etc. In parallel, they will be exposed to new tools for scanning, designing, building, and communicating as part of an evidence-based approach to material exploration.

Biography

Adam's research focuses on understanding how new technology can innovate design, fabrication, and construction methods in architecture. He is also the co-director of the Centre of Robotic Construction and Architecture at CUHK, which explores the use of advanced design and robotics for innovative architecture. His teaching demonstrates how emerging technology is integral to design thinking by exposing students to a process of discovery learning.



Zhenfei Wang

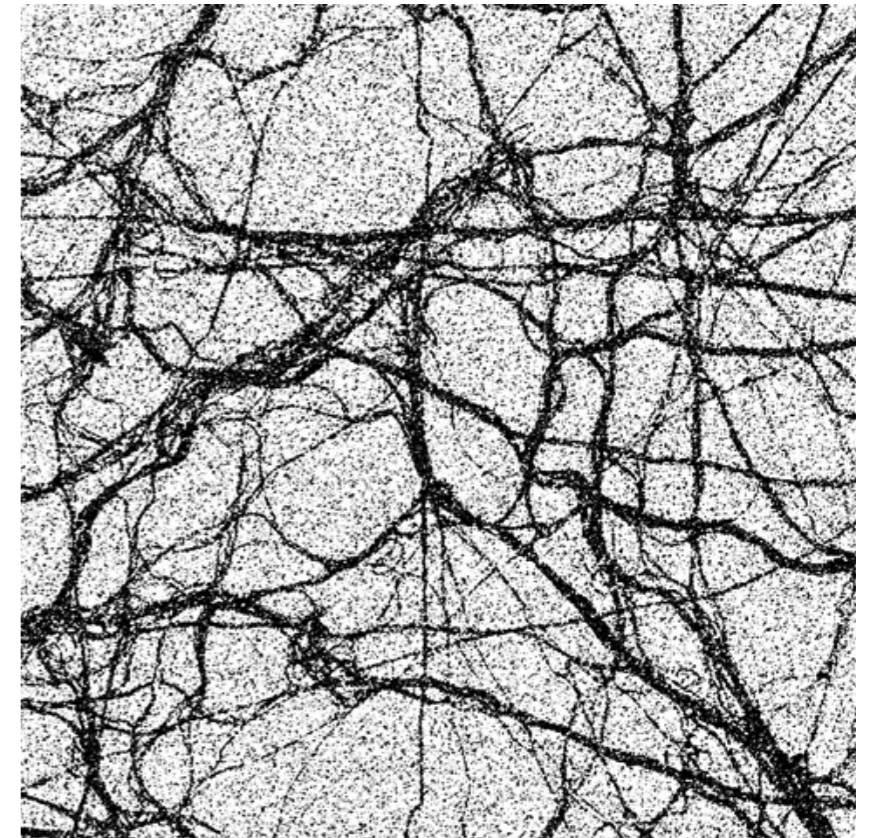
How Can You Make a Super Link?

Hong Kong is an extremely dense city with highly mixed programs. The multi-dimensional connections between buildings, public space, transportation facilities, etc., are often found in the city, facilitating travel and constituting a rich and exciting urban space. As it is not easy to alter the urban complex during the urban renewal process, adding multi-functional connection structures may be an effective way to bring changes to the present condition. This studio focuses on the connection space in Hong Kong, and seeks new ways of intervention through cutting-edge design and research methods.

The parametric design, closely connected to the research of FUB Lab, will be used as the core design method of this studio. Students will learn the rule-based design method and use the toolboxes to create their design prototypes based on mathematics, geometry, algorithms, structural principles, etc.

Biography

Zhenfei graduated from the Berlage Institute in Rotterdam, and is the co-founder of HHDFUN in Beijing and the Digital Architecture Design Association (2013-). He is interested in incorporating elements from various fields to produce architectural designs distinguished from the conventional ones. His research also focuses on constructing complex structures within the low technology environment.



MArch

DESIGN STUDIO

Wataru Shinji / Lily Zhang

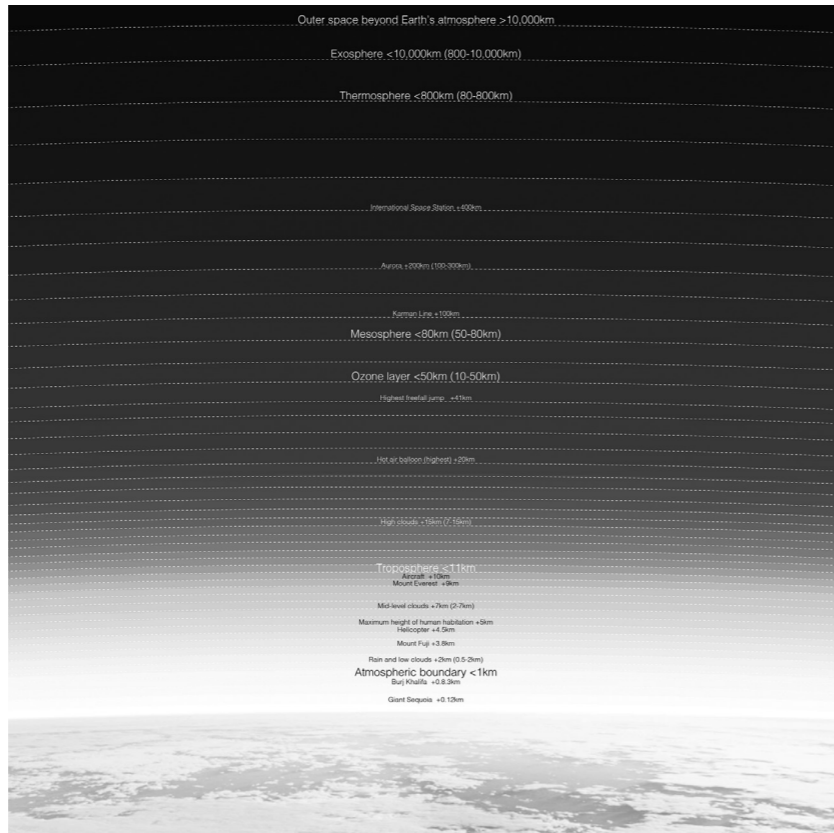
What Is Design Beyond Boundaries?

Scenery is an abstract notion. Just as different individuals vary in appearance, the word 'scenery' evokes a multitude of distinct images. At times it may be difficult to convey this concept even if we translate it textually and explain verbally. Yet when we try to illustrate it with a drawing, a picture, a form of the visual, we call it a vague and large image without boundary, such as a mountain range of rolling peaks, the horizon that divides the sea and sky, or the particular cityscape of Hong Kong with its density of tall buildings.

By critically interrogating the tension between nature and humankind in this studio, we aim to carefully study and rethink what the idea of architecture can actually encompass, to explore its inherent connections with its surroundings, and to expand the possibilities of design by creating scenery together with architecture.

Biography

Wataru is a designer whose interests lie not only in architecture but also on exploring space for other living beings on the planet. Lily is a designer whose work and research focus on designing environment through the interaction of the natural and the artificial. Their research interests include design environment, human and non-human living space, natural and artificial interaction, new possibilities in architecture and global material systems.



Claude Godefroy / Elva Tang

What Is the Purpose?

Towards a Sustainable Future for Hong Kong

The studio aims to formulate and develop a specific and sustainable architecture for Hong Kong. The studio will investigate architecture as an extension of a locale. We will design architecture that is specific to the place where it belongs, in response to the challenges of its climate, history, economy, social landscape etc. Today Hong Kong's public realm is scarce, harsh, overheated, polluted, and nature is absent. Minuscule flats and outdated workspaces with noisy aircons force people into alienating shopping malls. We believe it is urgent to redefine a relevant architecture for Hong Kong, and hopefully influence builders and policy makers in the city. The agenda for a sustainable future for Hong Kong should be to strive for: a specific architecture that nurtures the uniqueness of its culture; a subtropical architecture that creates comfort and wellbeing by passive means; a green architecture that brings nature back into the heart of our city; and an engaged architecture that gives back to the city and addresses social challenges.

Biography

Claude is the design director and partner at Henning Larsen Architects, leading the design of the new campus for French International School of HK and the Shaw Multipurpose Auditorium in Hong Kong University of Science and Technology. He has 20 years of experience in a wide range of architectural typologies. Elva is founding partner and director at Henning Larsen Hong Kong. Having worked in New York, Copenhagen, Paris, Hong Kong and Mainland China, her multicultural exposure has powered her ability in developing culturally specific architecture.



portraits of hong kong, wu guanzhong

MArch

REQUIRED COURSES

Architectural Theory and Criticism *arch 5321 David Dornie t2*

This course explores ideas that lie behind the appearance of buildings by examining key theoretical and philosophical ideas. The online format of this course permits a diverse range of international experts to deliver twelve lectures, each addressing a specific theme. Architecture is discussed in dialogue with the visual arts, literature, philosophy, and politics of its time, to reveal illuminating contextual relationships that underpin our understanding of the relationships between architecture and other areas of creative and scholarly endeavour.

Advanced Building Systems I *arch 5421 Adam Fingrut t1*

This course presents contemporary and innovative strategies for the integration of building systems into architectural design and construction. Conducted through the study of technology, the course examines problems, possibilities, co-ordination, and dependencies of practical building assembly. The course equips students with a working basis and literacy of

building systems and an understanding of the role architect coordinating with a team of consultants and specialists.

Advanced Building Systems II *arch 5422 Inge Goudsmit / Brian Anderson t2*

To realise architectural designs, it is crucial to communicate them clearly: to contractors, engineers, clients, building departments, quantity surveyors and other collaborators in the design process. A good documentation enables a smooth(er) design process, and if all parties follow the same standards, communication is more simple and straightforward. In this course, we will unravel the complexities of design documentation.

Professional Practice and Management *arch 6521 Mona Yeung t1*

This course introduces the general structure of the building industry, the professionals and trades associated with the building process. It will give insights into the statutory and non-statutory control mechanism in Hong Kong on the design and construction of buildings, such as the Town Planning Ordinance,

Land Lease, Buildings Ordinance and its regulations, Code of Practices, Design Manuals and Practice Noted for Authorised Persons. The role of Registered Architect and Authorised Person under the legislation will be examined. The Standard Form of Building Contract, duties, liabilities and relationships between the parties, and different types of Contracts will also be introduced. Various resolutions of contractual disputes including arbitration, mediation and litigation will also be explored.

Urban History and Theory *urbd 5703 Hendrik Tieben / Melody Yiu t1*

This course addresses the history and fundamental theory of urban planning. Fundamental concepts, international theories, and utopian ideas will be presented and analysed. Understanding the history and theory of planning requires the consideration of several factors. The evolution of the city as a physical, social, and economic entity will be introduced, investigating the key role that urbanism, combined with interdisciplinary approach of architecture and urban design, can play in creating a better and more livable city.

ELECTIVE COURSES

Drawing: Keeping a Sketch Book *arch 5131 David Dornie t1*

As analytical tools, architectural drawings convey information but often fall short of representing human experience - because perception can only be partially communicated through conventional drawing types, any singular drawing or technique. In order to rediscover the creative power of drawings for architecture we must learn to think through drawing. This course explores drawings that are distinct from drawings-as-illustrations, drawing processes as the vital component of creative spatial practice. You will be required to keep a sketchbook - working by hand to produce one drawing / sketch book page for every day of the elective.

Community Dream Garden: Designing a Regenerative Community *arch 5131 Peter W. Ferretto t1*

This is a unique opportunity to design a community garden project that will get built. Students will partner with Dream Impact HK Ltd and develop an innovative design for a natural site close to Clearwater Bay. Students will be asked to consider, the natural landscape, fauna and the

possibility to create a scheme using only natural materials such as wood, earth, and bamboo.

How Do We See and Perceive? *arch 5131 Xu Liang t1*

Architectural photography fundamentally is a tool for the documentation of architecture and built environment. With the rise of digital marketing and social media, architectural photography today matters more than ever in narrating the practice of architectural design and communicating it to a vast audience, casting a decisive impact on our perception of space/place. This elective, by focusing on the way we see and perceive, aims to examine how we consider architectural photography and explore its potentials as a medium of constructing space / place. Students will investigate the process of image-making and the curation of two exhibitions.

Solidity *arch 5131 Wataru Shinji / Lily Zhang t2*

To date, the majority of buildings constructed by humankind have been made of wood, stone, sand, or a combination of these resources on Earth. In this course, we will consider how 'stone'

has changed and evolved with architecture and examine what forms a sense of solidity in architecture through various substances and material formations. Driven and determined by our presence on this particular planet, perhaps the transparency vs. solidity dialectic reflects our space of occupation between the ground and the sky, connecting our living space to the environment, while simultaneously striving upwards towards the source that sheds light on our very surroundings.

Material Imagination: Spatiality of Colour *arch 5131 David Dornie t2*

This course explores ideas about architecture, perception and architectural representation, particularly related to the history and practice of materials and colour in architecture. A deeper understanding of materials is born out of relational values, a tensional set of conditions that qualify material by virtue of light, orientation, scale, place and time: the material imagination starts from the qualities of the room, of light and dark, orientation and 'concrete life' of the place. The course discusses relationships to the visual arts and asks how and why materials have been



so ling sum, evangeline

lam hui shing, michael

ho ka ho, kevin

ng kai fung

chan kam wo, patrick

du jingwei, galvin

chan sze wing, sarah

MArch

ELECTIVE COURSES

used historically – what are the possibilities of expression through colour, light and materials in contemporary architecture?

Transparency

arch 5131 Wataru Shinji / Lily Zhang t1

42

There is no such thing as transparent color. Or, is transparency all about color? In any case, transparency has a deep connection with humankind, and embodies one of the most indispensable materials in our lives today. In this course, we will focus on the theme of transparency and how its existence affects our lives. We will consider what transparency means from a perspective that goes beyond architectural applications. Ultimately, our aim is to redefine an understanding of the notion of transparency, and in particular how and why it exists and is enacted, whether through natural or human-driven means.

Dissecting the Virtual

arch 5331 Tatjana Crossley t1

There is a long lineage of virtual reality spaces throughout history that have utilised different

mediums, modes of representation and framing which propose different sensory engagement. Devices of immersion re-present a perceived reality, itself a form of representation as it is determined on a subjective basis through sensorial perception of space. As designers working with mediums and materials we inherently engage with this virtuality of experience. So then, what do our virtual realities expose about our society's deepest inclinations?

What Can Be Mined?

arch 5331 Han Man t1

Every building project can be viewed as an architectural experiment. Hong Kong's intensive construction over the last century has left behind a mountain range of bold experiments, most of which have not yet been examined and well documented in experiment reports. The city is thus like a rich mine waiting to be mined. This course imparts an understanding of 20th-century Hong Kong architecture and takes it as a frame of reference to further investigate the built experiments and extract the architectural achievements for reference in both present and future practice.

Extra-ordinary Arrangement of Loadbearing Components

arch 5431 Zhu Jingxiang t1

This course will unveil the enormously multilayered issues of wall and beam design through in-depth study on selected cases from international architects and local scenario. The complexity of a case will be clarified through a BIM modeling process, followed by analysis on structure, geometry, and organisation logic. Design exercise on wall and beam arrangement will prepare students for application in their studio work.

Function or Ornament: Rethinking Breeze Blocks

arch 5431 Hiroyuki Shinohara t2

This course explores the notion of tectonic in reevaluating traditional breeze blocks prevalent in modern architecture in tropical and semitropical regions. Breeze block is a simple building material that gives an ambivalent building expression of functional necessity and aesthetic appeal through repeating a casting block. The course calls for the reinvention of

its use in contemporary architecture by careful investigation of pattern, material, fabrication method and tools for producing a block. It is a response to the current issue of climate change aiming to create a sustainable built environment through contemporary breeze block design with the latest building technology.

How Do We Transfer Structural Concepts Across Scales?

arch 5431 Xu Liang t2

Too often we consider structural design as a process of mechanical calculation and optimisation, however for architectural studies, understanding structures represents rather a rational way of design thinking. In this elective, we aim to deepen students' comprehension of structural systems and accordingly develop structural sensibilities. Students will first investigate various types of structure assemblies, especially the from-active ones, and consider the close relationship between force and form. Then, furniture design will be adopted as a tool to test the behavior of certain structural concepts and explore the inseparable correlation between design ideas, their material embodiment and tectonic expression.

How Shall Architects Work in the Coming Era?

arch 5531 Maggie Ma t2

Architectural education enables students to design, to critically question, and tackle design challenges, as a prelude to practice and an integration into the full complexity of daily life. The course prepares students to practice, through the understanding of fundamental roles and values of an architect, with discussions on professional conduct and procedures related to practising as an architect. It is designed to inspire students to look beyond the customary, and consider the ever-changing environment of the future, through the study of alternative possibilities in architectural and spatial practices.

Urban Architecture and Cultural Practice

arch 5731 Melody Yiu t1

This course investigates the role of cultural architecture in urban context, asking the question of how cultural form / practice is situated in the city and affects its development. With an analysis method through mapping and drawing, students

will conduct a survey project to develop a critical perspective on cultural development.

Drawing Together, Slowly (2.0)

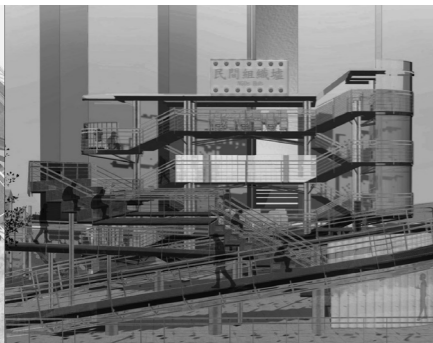
arch 5731 Patrick Hwuang t2

This elective focuses on the agenda of reclaiming the drawing as an instrument and activity of thought. To draw not as a way of showing but a way of seeing. Therefore the study is less concerned with what the eye sees, but rather, for what the mind sees, the visual. Furthermore, the action of the drawing will gather together the students to partake in a journey of discovery. The origin of collective drawing dates back to the Palaeolithic period and can be found in cave art. It is also primordial evidence of a collaborative creation process, which serves as a motivation for this research. This elective aims to investigate the synthetic potentials of collective drawing as a platform to draw out the full potential of drawing.

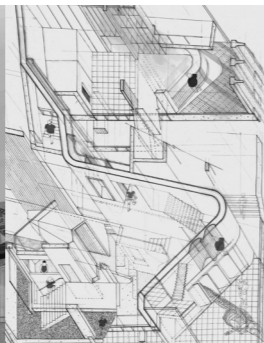
43



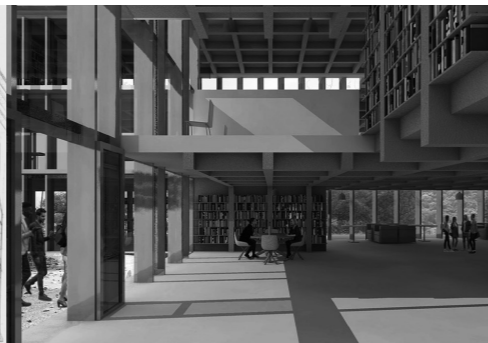
cheung kong ki, kenny



hong ching wah, don



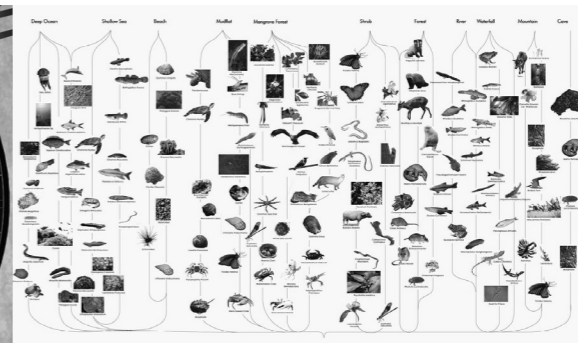
chung ho yin, otto



gai wenhui



guo mengdi



chow ki sha, sally



ho jun ching, karen

Programme Director

Jeroen van Ameijde

As the ongoing pandemic continues to transform our lives, new forms of working, communicating and socialising might permanently change the way we inhabit cities. The crisis has highlighted the crucial roles of public spaces and social infrastructures, as the physical and functional characteristics of our urban environments greatly impact the quality of life and well-being of local communities. The visible impact of climate change shows the urgent need to consider urban development and resource consumption in relation to human and planetary health. The MSUD programme aims to address these challenges through rigorous research and design projects, focusing on the economic, cultural and regulatory processes that shape cities and the human interactions and experiences that constitute urban life. The courses engage with theoretical and scientific literature, international and regional case studies, and contemporary methods for the analysis, simulation and visualisation of urban environments.

The newly extended, 16-month programme will start with a design studio focusing on collaborative processes for the urban design of neighbourhood spaces. Through engagement with local stakeholders and communities, students will develop speculative proposals and small scale tactical interventions at real sites. The second studio will focus on larger scale urban challenges, developing comprehensive research and design projects around the notion of the 'City within the City'. The thesis projects in the final term will further expand on this theme, using data-driven research methods or history, theory and case study analyses to formulate individual dissertations. Several of the programme's teaching and learning activities will be organised in collaboration with international and local partners, including a new 2-month internship programme where students engage with Hong Kong's urban design industry to gain experience with projects at a range of scales.

Study Scheme

Students are required to complete a minimum of 36 units of courses for graduation.

Required courses: 27 units

Elective courses: 9 units

First Term (2021 / 22):

- *URBD 5710 Urban Design Studio I - 6 units (required)*
- *URBD 5703 Urban History and Theory - 3 units (required)*
- *URBD 5731 Urban Processes - 3 units*

Second Term:

- *URBD 5720 Urban Design Studio II - 6 units (required)*
- *URBD 5702 Environmental and Urban Economics - 3 units (required)*
- *URBD 5732 Urban Transport Networks - 3 units*

Summer Term:

- *URBD 5734 International Workshop - 3 units*
- *Internship Programme* (non credit-bearing)*

First Term (2022 / 23):

- *URBD 6701 Urban Design Thesis - 6 units (required)*
- *URBD 5704 Research methods in Urban Design - 3 units (required)*
- *URBD 5735 Environmental Design for Liveable and Healthy Cities - 3 units*

For the full course list, course outlines and updates, visit the programme website:
<http://web5.arch.cuhk.edu.hk/urbandesign/>

* *The internship programme is offered in the summer term to complement the course work. It allows students to gain experience in leading urban design firms in Hong Kong and link their academic research to issues with relevance in professional practice. Participation in the Internship Programme is on a voluntary basis.*



DESIGN STUDIO

Urban Design Studio I a & b

urbd 5710

Jessica Cheung

Melody Hoi-lam Yiu



The Urban Collaborative: How Does Urban Design Enable and Empower?

The Urban Design Studio in Term I will explore urban design opportunities at various scales, from regional networks to community public spaces, in response to contemporary urban issues and challenges. The pandemic situation in the past year has highlighted existing social disparities, as they were further exacerbated by the health crisis. Urban design can play a role to better prepare cities and communities for the 'new normal', by reconsidering the way public spaces can be used, where and how we will live, work, socialise, and move between different places and activities. This year's studio theme builds upon the topic of *collaboration*, to investigate how networks and communities work together, and to propose innovative partnership models for positive change.

We will explore the idea of the 'Urban Collaborative', a working platform that enables and empowers different stakeholders in the community to participate, to voice their opinions, and to make collective decisions that contribute to the urban design process. The urban designer is then acting as a facilitator rather than a leader, an initiator rather than a decision maker, a learner / active listener rather than a master. As such, stakeholders with different backgrounds, resources, and knowledge will have equal opportunities to express their needs and to identify common challenges, to exchange and share ideas, and to collectively build their environment with appropriate tools shared within the community. Our aim is to design and test methods that enable all citizens to contribute to and receive support from the community, converting individual interests into a strong sense of belonging, in order to achieve a sustainable way of maintaining and improving inclusive living environments.

REQUIRED COURSES

Urban History and Theory

urbd 5703 Hendrik Tieben & Melody Yiu

This course examines the main ideas, histories and theories of the city. Important themes and debates in the history of urban design will be critically explored. In particular, the course investigates how urban forms have emerged and later reinterpreted, adapted and challenged by different social, economic and political contexts.

Environmental and Urban Economics

urbd 5702 Sylvia He

The course prepares students to develop criteria for value judgments about the complex social, economic and environmental impact of urban design and planning. A range of topics will be discussed including planning policies, migration, transportation, zoning and livability issues, and potentials for more sustainable, just and livable cities. Students will learn about contemporary urban economic research and online sources of economic data.

ACTIVITY

International Urban Design Workshop

urbd 5734 Hendrik Tieben

As in every year, the programme plans an international urban design workshop. If the pandemic situation allows, the workshop will be organised in an overseas location (e.g. New York) in collaboration with one of our international partner programmes. If the current travel restrictions remain in effect, an international online workshop with our international partners will be arranged.

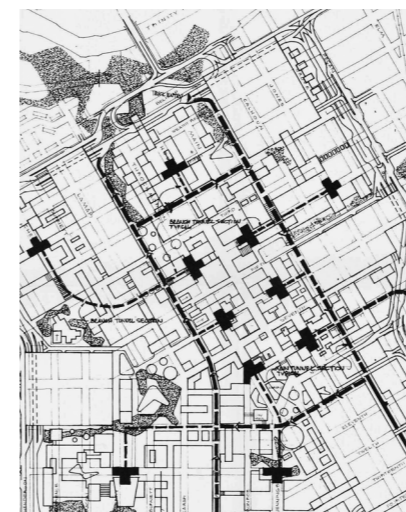
DESIGN STUDIO

Urban Design Studio II a & b

urbd 5720

Jeroen van Ameijde

Darren Snow



City Within the City: Social Processes and Self-contained Communities Within Polycentric Urban Agglomerations

The Urban Design Studio II explores theories and methodologies around the conceptualisation and development of comprehensive urban design projects based on in-depth research. Continuing our research agenda into the role of neighbourhoods amongst increasingly interconnected urban networks, we study the historic context, precedents and recent developments around the formation of self-sufficient neighbourhoods and communities, in relation to the practice of urban planning and design.

This year, we will focus on the notion of the 'City within the City', analysing the tension between commonly used large-scale plot development models, creating self-contained communities, and the local and regional social processes that lead to vibrant neighbourhoods and social resilience. Using international precedents such as the New Town Movement, Neighbourhood Unit, Factory Towns and Hong Kong's self-contained housing estates, we will reflect on the modular nature of recent urban development projects in the Greater Bay Area, and their limitations or opportunities in supporting social, economic and environmental sustainability.

For the research and design project stage, we will use the CUHK university campus as a case study site to analyse social processes such as mixed forms of work, live and recreation, as well as new forms of teaching and learning in a post-pandemic 'new normal'. Through critical analysis and data-driven mapping of everyday movement and activity patterns, student teams will identify opportunities for new connections, public spaces and infrastructures, and translate these into comprehensive urban design proposals for increased liveability, collaboration and innovation.

ELECTIVE COURSES

Urban Processes

urbd 5731 Sujata Govada

This course gives an introduction to urban processes such as urban regeneration, statutory planning, placemaking, and the role of community engagement in the development of Hong Kong and beyond. Through lectures, assignments, role-play and community workshops, students get hands on experience by directly engaging with various stakeholders as well as community members.

Urban Transport Networks

urbd 5732 Daniel Pätzold

The course provides an introduction into history and application of urban transportation systems. Urban integration, policy, transport concepts, planning aspects, technical requirements and ways of implementation are presented. During the course visiting lectures, professional knowledge will be conveyed whilst its adaption to student design projects will be encouraged.

THESIS

Urban Design Thesis

urbd 6701 Jeroen van Ameijde & Darren Snow

The course covers the general procedures of theoretical inquiry as it relates to urban design. For the dissertation, students will develop a proposal and produce an intellectually rigorous piece in research and writing. The topics will be self-defined but should relate to the overall studio theme.

MPhil-PhD

48

name	research title	supervisor(s)
<i>Cai Meng / PhD</i>	Developing a High-resolution Urban Carbon Emission Inventory for the Greater Bay Area: An Open Data Approach	<i>Edward Ng</i>
<i>Chan Ching Kan / PhD (Part-time)</i>	Architect as the Agency in the Making of Public Realm: Cultivating Diversity through Commercial Architecture	<i>Francesco Rossini Stanislaus Fung</i>
<i>Chan Chun Hong, Felix / PhD (Part-time)</i>	Applying Semantic Web on BIM-Based Urban Water Supply Network	<i>Hendrik Tieben Tsou Jin-yeu</i>
<i>Chen Fei / PhD</i>	Transformation of Public Participation in Urban Renewal, HKSAR (2001-)	<i>Hendrik Tieben</i>
<i>Chen Feihao / PhD</i>	Detecting and Simulating Future Land Use / Cover Change with Deep Learning Techniques	<i>Zhu Jingxiang Tsou Jin-yeu</i>
<i>Chen Jun / PhD</i>	Dialogue: A Case Study of The Collaborations Between Structural Engineer Zhang Zhun and Several Chinese Architects	<i>Thomas Chung Stanislaus Fung</i>
<i>Cheung Ka Ming / PhD</i>	Development of Healthy City Assessment Tool for Active Lifestyle	<i>Edward Ng</i>
<i>Choi Sze Ho, Jack / PhD</i>	Hong Kong Vernacular Urbanism in the Collective Realm: A Sense of Place and Identity to the People and the Community through Everyday Events of Architecture	<i>Peter W. Ferretto</i>
<i>Rico Samuel Diederling / PhD</i>	Building Systems Adaptive to Radical Changes	<i>Zhu Jingxiang</i>
<i>Fung Sze Wai, Veera / PhD</i>	Developing without Bias: An Alternative for a Gender Inclusive Design for Production in Gaobu Village, Tongdao County, Hunan	<i>Peter W. Ferretto</i>
<i>Gao Shichao / PhD</i>	Exploration of Italian Post-war Construction Techniques - Study on Hexagonal Bricks	<i>Zhu Jingxiang</i>
<i>Geng Yan / PhD</i>	From Rural Settlement to Urban Form: A Comparative Study of Village Transformations in Shenzhen and Hong Kong	<i>Hendrik Tieben</i>
<i>Garvin Goepel / PhD</i>	Augmented Architecture	<i>Zhu Jingxiang Kristof Crolla</i>
<i>Ho Tsz Wai / PhD</i>	Redesigning and Evaluating Primary and Secondary School Spaces for Wellbeing in Hong Kong: A Systematic Approach	<i>Thomas Chung</i>
<i>Huangfu Wenzhi / PhD</i>	Between Seeing and Being Seen: Understanding a Social Logic Based on Asymmetry of Single Visual Interaction (ASVI) in Built Space and its Application in Space Analysis	<i>Hendrik Tieben Thomas Chung</i>
<i>Ju Lipin / PhD</i>	An Chinese Utopia Beyond State: Twenty-five-years' Urban Planning History of Shekou Industrial Area, Shenzhen (From 1979 to 2004)	<i>Hendrik Tieben</i>

name	research title	supervisor(s)
<i>Li Kehan / PhD</i>	Contested Heritage Breeds Local Embeddedness: In the Building of the Vernacular in China's Nu River Valley	<i>Edward Ng Peter W. Ferretto</i>
<i>Li Xiang / PhD</i>	Evaluating the Accessibility of Public Open Space under Demographic Aging with Geographical Information System: A Case Study of Wong Tai Sin District, Hong Kong	<i>Hendrik Tieben Tsou Jin-yeu</i>
<i>Li Yuke / PhD</i>	Soundscape in Chinese Literati Gardens of the Ming Dynasty	<i>Hendrik Tieben Thomas Chung</i>
<i>Liang Erchun / PhD</i>	The Transformation of Housing Typology in Shenzhen	<i>Hendrik Tieben</i>
<i>Liu Chang / PhD</i>	Rocks and Rockeries in Song Dynasty China	<i>Hiroyuki Shinohara Stanislaus Fung</i>
<i>Liu Xinyu / PhD</i>	Street Vitality Analysis Based on Multi-Source Data Fusion Analysis	<i>Hendrik Tieben Jeroen van Ameijde</i>
<i>Liu Yan / PhD</i>	History and Memory: Research of the Gardens on Paper in the Late Ming Dynasty	<i>Hiroyuki Shinohara Stanislaus Fung</i>
<i>Luo Jing / PhD</i>	Form Follows Body: The Dong Carpenter's Knowledge and the Application of Carpenter's Rules, Rituals and Tools for Constructing the Dong Minority Houses in Rural Southern China	<i>Peter W. Ferretto</i>
<i>Nan Tian / PhD</i>	Translating Torii Gates: Case Studies and Design Explorations on Generation of Frame Constructions	<i>Zhu Jingxiang</i>
<i>Ouyang Wanlu / PhD</i>	Improve Microclimate and Pedestrian Thermal Comfort by Optimising Urban Greenery Combinations on Ground Level, Vertical Wall, and Rooftop Locations	<i>Edward Ng</i>
<i>Shen Qi / PhD</i>	A Case Study of Contemporary Chinese Architect	<i>Thomas Chung Stanislaus Fung</i>
<i>Sun Xiong / PhD</i>	A Preliminary Study on Architects Discourse and Works in Contemporary China: 3 Cases by Atelier Deshaus	<i>Thomas Chung Stanislaus Fung</i>
<i>Tian Fang / PhD</i>	Study on the Sustainable Development System of China's Rural Areas with Insufficient Endogenous Mechanism: a Practical Exploration and Theoretical Framework of 'UIIV'	<i>Edward Ng</i>
<i>Wajiha Tariq / PhD</i>	Enhancing Quality of Life in Hong Kong: A Computational Approach for the Evaluation and Redistribution of Urban Resources	<i>Hendrik Tieben Jeroen van Ameijde</i>
<i>Wen Rui / PhD</i>	Community Design Adaptability of Productive Aging - Potential Assessment and Case Study in China	<i>Thomas Chung</i>

49

name	research title	supervisor(s)
Wang Ran / PhD	Urban Expansion Patterns and Surface Urban Heat Island Effect of Selected Chinese Cities from 2000 to 2005 Based on the Local Climate Zone Scheme	Edward Ng
Wong Yuk Tsin, Beryl / PhD	Searching for the meaning of authenticity in Dong Minority village	Peter W. Ferretto
Wu Fangning / PhD	Evaluation of New Towns and New Development Areas' Spatial Planning in Hong Kong from the Perspective of 20-Minute Neighborhood	Hendrik Tieben
Xiang Luyao / PhD	Outdoor Environment as a Means to Relieve Human Psychological Stress in High Density City at Pedestrian Level	Edward Ng
Yiu Hoi Lam, Melody / PhD (Part-time)	Institutional Public Space: Cultural Architecture, Institution and its Public Space	Hendrik Tieben Francesco Rossini
Zhai Yukun / PhD	Spatial Panel Construction: Case Studies on Industrialised Modular Buildings	Zhu Jingxiang
Zhang Xiaojun / PhD	Resilient Village as the Rural Response to the megacity of the Greater Bay area in China	Peter W. Ferretto

Incoming PhD Students 2021-22

Lam Man Yan MArch CUHK BSc CUHK	Supervisor: Peter W. Ferretto	Lau Hing Ching MArch CUHK BSc CUHK	Supervisor: Zhu Jingxiang	Jin Yuan MA Beijing I. Tech. BA Beijing I. Tech.	Supervisor: Thomas Chung
Liu Ziwei MA U. Sheffield BArch Guangzhou U.	Supervisor: Peter W. Ferretto	Li Junwei MSc CUHK BEng Nanjing U.	Supervisors: Hendrik Tieben Mo Kar Him	Jiang Pu MArch TU Delft BEng NEFU	Supervisor: Francesco Rossini
Wang Jingying MSc Kyoto U., BEng U. Stuttgart	Supervisor: Edward Ng	Yang Qi MPhil Chongqing U. BEng Xihua U.	Supervisors: Hendrik Tieben Inge Goudsmit	Zhao Mingming MFA VCU BA UNNC	Supervisor: Tatjana Crossley
Yu Boyuan MArcg UCL BA Harbin UST	Supervisor: Adam Fingrut	Ng Tsing Yin, Provides MRes UCL, MA SAC BSc CUHK	Supervisors: Hendrik Tieben Jeroen van Armeijde		



Faculty

Full-time Faculty

Kelly Chow *Professional Consultant*
 Thomas Chung *Associate Professor*
 Tatjana Crossley *Assistant Professor*
 David Dernie *Professor*
 Peter W. Ferretto *Associate Director and Associate Professor*
 Adam Fingrut *Assistant Professor*
 Inge Goudsmit *Assistant Professor*
 Han Man *Lecturer*
 Patrick Hwang *Assistant Professor*
 Maggie Ma Kingsley *Assistant Professor*
 Mo Kar Him *Assistant Professor*
 Edward Ng *Yao Ling Sun Professor of Architecture*
 Francesco Rossini *Assistant Professor*
 Hiroyuki Shinohara *Assistant Professor*
 Hendrik Tieben *Director and Professor*
 Jeroen van Ameijde *Assistant Professor*
 Xu Liang *Lecturer*
 Melody Yiu *Lecturer*
 Zhu Jingxiang *Associate Professor*

Emeritus and Honorary Professors

Nelson Chen *Honorary Professor*
 Gu Daqing *Emeritus Professor*
 Heng Chye Kiang *Honorary Professor*
 Ho Puay Peng *Emeritus Professor*
 Ronald Lu *Honorary Professor*
 Peter Rowe *Honorary Professor*
 Tsou Jin Yeu *Emeritus Professor*
 Rocco Yim *Honorary Professor*

Part-time Faculty

Brian Anderson *Adjunct Associate Professor*
 Nobuo Aoki *Adjunct Professor*
 Essy Baniassad *Adjunct Professor*
 Chan Chi Yan *Adjunct Associate Professor*
 Jessica Cheung *Lecturer (PT)*
 Fergus Comer *Adjunct Associate Professor*
 Raffealla Endrizzi *Lecturer (PT)*
 Stanislaus Fung *Adjunct Associate Professor*
 Claude Godefroy *Adjunct Associate Professor*
 Sujata Govada *Adjunct Associate Professor*
 Simon Hsu *Adjunct Associate Professor*
 Lam Tat *Adjunct Associate Professor*
 Sebastian Law *Adjunct Professor*
 Clover Lee *Adjunct Associate Professor*
 Juan Minguez *Adjunct Associate Professor*
 Betty Ng *Adjunct Associate Professor*
 Daniel Pätzold *Adjunct Associate Professor*
 Ioana Pricop *Lecturer (PT)*
 Wataru Shinji *Professional Consultant (PT)*
 Darren Snow *Adjunct Assistant Professor*
 Elva Tang *Adjunct Associate Professor*
 Paul Tse *Adjunct Associate Professor*
 Wang Zhenfei *Adjunct Associate Professor*
 Xu Subin *Adjunct Professor*
 Yutaka Yano *Adjunct Associate Professor*
 Mona Yeung *Adjunct Associate Professor*
 Yuet Tsang Chi *Adjunct Associate Professor*
 Lily Zhang *Adjunct Assistant Professor*



Events 2020-21

event	date
Kinoshita Lecture	
Eric Parry City Works: Creating New Civic Space	25.03.2021
Lectures	
Alvin Huang Technology / Technique / Techne: Creation, Contingency & Culture	17.09.2020
Gustav Düsing Spaces of Natural Habitation	24.09.2020
Manja van de Worp Structural Design Products	08.10.2020
David Umemoto Imperfect Modes of Production	15.10.2020
Wendy Wu Hyper Dense Metropolitan Spaces	05.11.2020
Philip Clarke Digital Placemaking	12.11.2020
Mollie Claypool Automated Architecture	19.11.2020
Johansen Skovsted Arkitekter The Ready at Hand	25.01.2021
Simone Bossi Reveries	01.02.2021
BEAU Architects Three Points on Making	08.02.2021
Jon Setter The Unmaking of Perceptions; Kris Provoost An Architect's Look at Architecture	22.02.2021
Jason Ho Why Should Design Bring Dignity to All?	01.03.2021

event	date
Wataru Shinji & Lily Zhang Unmaking Architecture	08.03.2021
Chatpong Chuenrudeemol Bangkok Bastards	15.03.2021
Seminars	
2020 A Year without Public Space: Reflections and Outlook online Symposium	06.11.2020 - 07.11.2020
26th International Conference of the Association for Computer-Aided Architectural Design Research in Asia Online and Global (CAADRIA 2021)	29.03.2021 - 01.04.2021
PhD Symposium 2021	26.04.2021
Making Place in the Greater Bay Area International Symposium	14.05.2021 - 15.05.2021
30 km/h: For Safe, Healthy and Liveable Streets Web Forum	17.05.2021
Exhibitions	
Adam Fingrut's 'CU Brick' project at the Hong Kong Science Museum	20.11.2020 - 14.04.2021
2021 Master of Architecture Graduation Show	26.05.2021 - 18.06.2021



Summer Activities 2021

Material Praxis Designing Social Agencies

Peter W. Ferretto 17 May - 7 June

This course addresses the social responsibility of architecture vis-à-vis material prototypes that engage directly with real everyday social issues. Architecture is intrinsically connected to finding solutions to specific problems, we call this 'Design'. Design goes beyond identifying issues, it has to have prepositional qualities, provide solutions that address the problems at stake. Within this context, research by design opens the possibility to address pressing social issues that afflict our society. The course focuses on the notion of 'Material Narratives' a research method of generating knowledge from how materials can be applied and used in a new context.

Conceived, Perceived, Lived Mapping Urban Politics

Inge Goudsmit 17 May - 9 June

The summer course will explore and represent urban space from different perspectives: the designed, the physical and the symbolic, and map the different stakeholders involved in the shaping of space. The aim is to unravel these elements to gain a better understanding of how urban politics produce space, how it is appropriated by users and how symbolically interpreted. This framework is based on Lefebvre's spatial triad of the 'production of space', in which he argues that all space is not an empty container, but a social construct, which consists of three elements: the conceived (mental), perceived (physical) and lived (social) space. We will look in particular at Hong Kong's new towns and analyse how they were produced, appropriated and how cultural identity is (not) created.

Designing Infrastructures of Inclusion III

Hendrik Tieben 24 May - 4 June

In this intensive design workshop students from The New School / Parsons, the Chinese University of Hong Kong (CUHK) and the Federal University of Rio de Janeiro (UFRJ), will work remotely and collaboratively on urban mobility corridors in New York City, Hong Kong and Rio de Janeiro. These interdisciplinary and international student teams will first study practices and processes of production and appropriation of transit-oriented public spaces, and then develop scenarios and design strategies which tackle global problems by creating vibrant, meaningful, and community-centered public spaces, socio-spatial infrastructures, and design and art interventions. Our collective work will develop in relation to the four main themes and under the umbrella of 'Designing Infrastructures of Inclusion.' The four themes are: Public space & mobilities; Public space & housing; Public space & cultural heritage; and, Public space & well-being.

Cultural Landscape of the City Narratives of Cultural Space

Melody Yiu 31 May - 17 June

This course will review cultural architecture and its public space in Hong Kong, reflecting upon how cultural acts in public space plays a role in the making of urban landscape. The dynamics between built and experienced space can be portrayed as a spatial narrative, in many cases expressed through artistic work in installation and performing arts. Focusing on the public space outside of the standard functional program (i.e., the theatre and the gallery), we will investigate how cultural space is experienced. Students will be asked to respond to a spatial intervention design charette.

To Draw Slowly, Together

Patrick Hwang 31 May - 18 June

This elective focuses on the agenda of reclaiming the drawing as an instrument and activity of thought. To draw not as a way of showing but a way of seeing. Therefore the study is less concerned with what the eye sees, - the optical - but rather, for what the mind sees, the visual. Furthermore, the action of the drawing will gather together the students to partake in a journey of discovery. The origin of collective drawing dates back to the Palaeolithic period and can be found in cave art. It is one of the earliest forms of human civilisation that preceded language. It is also primordial evidence of a collaborative creation process, which serves as a motivation for this research. This elective aims to investigate the synthetic potentials of collective drawing as a platform to draw out the full potential of drawing.

Countryside Conservation in Hong Kong: From Vernacular Architecture to Eco-cultural Landscape

Thomas Chung 7 June - 23 July

This elective leads students to explore Hong Kong's remote countryside, visiting real sites, meeting villagers and working on actual projects. Students will experience and participate in the conservation and revitalisation of our 'eco-cultural landscape'. In small groups, students will research rural conservation practices and policies; draw and study vernacular architecture and village fabric; make material prototype tests on site, while engaging with villagers and stakeholders as well as consulting with experts from relevant disciplines.



Renegotiating the Habitual

Matthew Ho

18 June - 16 July

Through the use of film-making, this course is driven by empirical, sensorial and emotional thinking to propose a methodological inversion in the way that we imagine the city - from life to buildings, not the other way round. We will operate on the crossroads between social sciences and art. Using a subjective and sensorial approach, we observe, reveal, and question the cultural complexity that drives the political and economic forces of a city- and most importantly the consequences these factors have on the individual.

Digital Drawing

Norine Chu / Jane Ling /
Marco Chui / Michael Cheung /
Natasza Minasiewicz

25 June - 3 July

This workshop focuses on translating architectural design ideas - structures, spaces, activities and time into 2d representational drawings. By exploring different ways of 'drawing', the course helps to transform students' existing projects and 3d models into high-quality presentation graphics, manifesting the 3-dimensionality and depth of the information and underlying ideas in the designs. With a central focus on 'buildings', the workshop aims to highlight additional layers of information which can be incorporated in final drawings, to represent spatial qualities, activities and processes that are taking place. Combining computational and curatorial skills, the young professional team will assist students to develop additional portfolio drawings of their studio work.

Introduction to CNC Fabrication Workshop

Jason Ho

6 July - 14 July

This hands-on workshop will expose students to some of the School's existing equipment in preparation for their academic work. Students will be introduced to the School's computing, scanning and fabrication tools. Participants will learn about the workflows between 3D scanning, digital design and optimisation, and CNC fabrication cutting devices like routers.

Robotics and Computer Vision Workshop

Adam Fingrut

20 July - 22 July

This workshop will expose participants to the cross section between design tools, robotic control systems and computer vision. This hands-on experience will show students how to approach small scale robotic arms to conduct model assembly linked to standard software like Rhinoceros 3D, Grasshopper and Python. Students will use computer vision tools to integrate real-time material detection, digitisation, and analysis for incorporation into their design models.

UAV Photogrammetry Based Generative Design

Jeroen van Ameijde /
Carson Ka Shut Leung

28 July - 30 July

Unmanned Aerial Vehicles (UAV) or 'drones' in combination with 2D and 3D mapping software are increasingly used for a range of applications. This workshop exposes participants to a range of digital tools and methodologies to develop a real time object

tracking workflow that maps public space movements and develop a machine learning algorithm that analyse aerial drone footages to be projected onto a photogrammetry model. Through analysing directly in a high-resolution modelling environment that captures the full complexity of a site, design development and testing techniques can be set up that will allow for greatly improved quality and performance of new buildings within their environment.

Architecture Explorer Programme

Patrick Hwang

17 - 31 July

This summer programme aims to enable secondary school students from Hong Kong and abroad to explore both the challenge and pleasure of studying architecture. It provides an opportunity for enrolled learners to unleash their creative potential through art, design and architecture. Students will explore the fun of design by transforming a concept into three-dimensional spaces. Architecture will be experienced through guided field trips to significant local buildings and professional architectural offices. Students will be tutored by studio professors and teaching assistants to develop their individual design projects. The combination of studio, workshops, lectures and field trips presents an introduction to different aspects of architecture and how it is practiced today. The students will learn to see the significance of architecture by participating in various activities offered by professors from the School. Since 2021, the programme has an added week of focused learning in computational tools.



30th Anniversary Celebrations

The School of Architecture at The Chinese University of Hong Kong will celebrate its 30th Anniversary this academic year. To mark this milestone, we are launching a series of special events and projects in the upcoming months:

Placemaking Projects & Activities	2021-22
Homecoming	04.09.2021
Conversations with Alumni - Monologue, Dialogue, Multilogue 2021-2022	Fall 2021
Publication	April 2022
Alumni Exhibition	Summer 2022
Mentorship Programme	2021-22

Details of these celebration events and projects will be available later. We hope you will join us in commemorating our 30 years of excellence in design teaching and research at CUHK.



Student Exchange 2021-22

Exchange Programme

Partner University
Delft University of Technology

Graz University of Technology

National University of Singapore

Polytechnic University of Milan

Polytechnic University of Turin

University of Applied Sciences Stuttgart

University of Cambridge

University of Westminster

University-wide Exchange
University College London

Outgoing

TBC

TBC

Tam Chi Wan, Cynthia
Pun Tsz Kiu, Josephine

TBC

TBC

Yeung Ka Yu, Kyle
Zhang Xinyue, Jess

TBC

Cheng Nga Man, Anthea
Xu Hanming, Ming

Incoming

TBC

Kilian Hoffmann

TBC

Teresa Zanmarchi

TBC

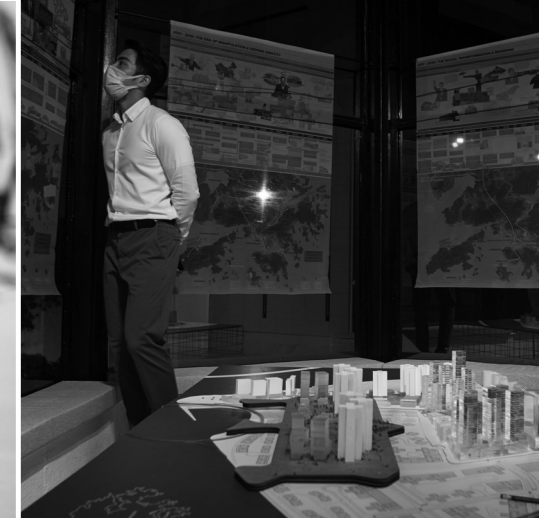
Onno Max Boecker

TBC

TBC

Daniel Mc Carthy

Incoming and outgoing students to be confirmed in Term 1.



Awards and Scholarships 2020-21

Awards	Recipients	Year
Clifford Wong Prize in Housing Design Clifford Wong Prize in Housing Design - Commendation	Liu Keqi, Kuki Ng Hoi Kiu, Jazzy	BSSc Y4 MArch 2
CUHK CAADRIA Student Award	Chan Tsz Sun, Ovan Keung Shing Fung, Adwin Leung Ho Wai, Ian	MArch 2 MArch 2 MArch 2
64 CUHK CAADRIA Student Award - Commendation	Jiang Tianyilan Zeng Lingzhe, Jeff Chan Hoi Seng, Stanley	BSSc Y3 BSSc Y4 MArch 2
HKIA Student Medal	Chung Ho Yin, Otto	MArch 2
Hong Kong PhD Fellowship Scheme	Garvin Niklas Karsten Goepel	RPg
RIBA President's Medal Award Nominees Silver Medal	Chow Ki Sha, Sally Jiang Heng	MArch 2 MArch 2
Bronze Medal	Chan Pan Nga, Beverly Wong Ho Yuen, Brian	BSSc Y4 BSSc Y4
Society of Construction Law HK Prize	Ho Ka Ho, Kevin Chen Yuxuan Zhai Zhuoyi	MArch 2 MArch 2 MArch 2
School of Architecture Best Studio Design Awards Studio A Studio A - Commendation	Cheung Yi, Yvonne Li Yuen Ching, Rani Chan Tung Hoi, Peter	BSSc Y3 BSSc Y3 BSSc Y3
Studio B Studio B - Commendation	Li Yuen Ching, Rani Chan Tung Hoi, Peter Wong Shun Hang	BSSc Y3 BSSc Y3 BSSc Y3
Studio C	Chiu Chung Yin, Cyrus Lau Yuk Fan, Fenton Lee Sin Yan, Angel Tsang Siu Kiu, Charlotte Lau Sai Yam, Carlos Sit Chi Man, Simon Wong Ho Yuen, Brian Lam Cheung Ha Law Pui Shuen, Julia Tang Hiu Ching, Coco Yiu Tsz Wai	BSSc Y4 BSSc Y4 BSSc Y4 BSSc Y4 BSSc Y4 BSSc Y4 BSSc Y4 BSSc Y4 BSSc Y4 BSSc Y4 BSSc Y4

Awards	Recipients	Year
Studio D Studio D - Commendation	Wong Ho Yuen, Brian Hung Kwong Lau, Gordon Sit Chi Man, Simon Chan Tsz Kwan, Kelvin	BSSc Y4 BSSc Y4 BSSc Y4 BSSc Y4
Studio D Best Model Award	Chan Hoi Seng, Stanley Chan Tsz Sun, Ovan Keung Shing Fung, Adwin Chau Yan Cho, Enzo Cheung Hoi Lan, Sandy Chung Ho Yin, Otto Yeung Hoi Tung, Karen Leung Man Chong, Larissa Lau Yip Fay, Martin Ma Ting Kwong, Marcus Jiang Heng Chan Kai Ying, Claudia Poon Long Wun, Adabelle Chan Ho Kiu, Angel Chan Wang Fung, Raphael Ho Ka Ho, Kevin	MArch 2 MArch 2 MArch 2 MArch 1 MArch 2 MArch 2 MArch 2 MArch 2 MArch 2 MArch 2 MArch 2 MArch 2 MArch 2 MArch 1 MArch 2 MArch 2
Advanced Architectural Design Studio		
Scholarships	Recipients	Year
Prof Eric Lye Memorial Scholarship	So Ching Ching So Wing Yi	MArch 1 MArch 1
Professor Raymond Fung Scholarship	Chow Tik Hei, Dacy	MArch 1
School Leadership Scholarship	Leung Man Chong, Larissa Hong Ching Wah, Don	MArch 2 MArch 2
Wong Tung & Partners Scholarship	Ng Hoi Kiu, Jazzy Chung Ho Yin, Otto	MArch 2 MArch 2

Awards (Alumni)

AIA Photography Competition - Honourable Mention

ARCASIA Thesis of the Year Award:
Gold Award
Bronze Award

Architecture and Urban Planning Graduation
Projects Competition - Exceptional Honor

Architizer One Drawing Challenge 2020 - Finalist

Dezeen Awards 2020 ('Small Interior of the Year' category)

HKIA Student Medal 2020

HKIA Young Architect Award 2019 - Honourable Mention

HKIA Young Architect Award 2020:
Winner
Honourable Mention
Shortlisted

Awards (Faculty)

HKIA Medal of the Year Outside Hong Kong and
Special Architectural Award - Social Innovation

Most Outstanding Design of the
DesignInspire 2020 Exhibition

INU Award for Urban Planning Literature

The Future Project Awards 2021 (residential category)

United Nations International Green Gown Awards 2021

Recipients

Lau Sze Ngai, Sianne

Ma Chun Yu, Kelvin
Wong Lok Hei, Jessie

Robert Tang

Matthew Choy

Lam Kwai Pui, Patrick

Wong Lok Hei, Jessie

Yiu Kam Po, Vince

Wong Sau Yin, Samuel
Law Chun Wai, Justin
Lam Wai Hon, Joshua

Recipients

Edward Ng
Wan Li
Chi Xinan (RPg)
Emily So (Cambridge)
Bai Wenfeng (Kunming UST)

Thomas Chung
Ho Tsz Wai, Jimmy (RPg)

Francesco Rossini
Melody Yiu

Condition Lab
(led by Peter W. Ferretto)

Edward Ng
Wan Li

Year

BSSc (2019)

MArch (2020)
MArch (2020)

BSSc (2020)

BSSc (2020)

MArch (2010)

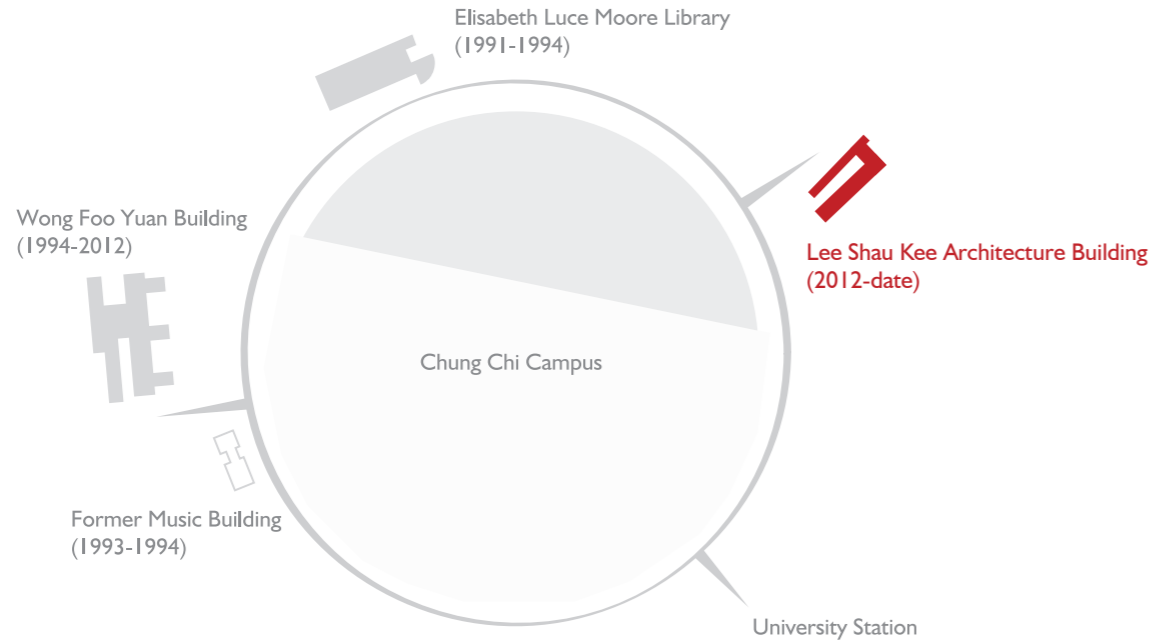
MArch (2020)

MArch (2010)

MArch (2015)
MArch (2010)
MArch (2018)



Location



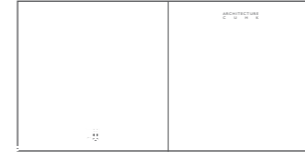
SCHOOL OF ARCHITECTURE
 香港新界沙田中文大學建築學院
 LEE SHAU KEE ARCHITECTURE BUILDING
 THE CHINESE UNIVERSITY OF HONG KONG
 SHATIN, NT, HONG KONG. TEL +852 3943 6583
 EMAIL ARCHITECTURE@CUHK.EDU.HK

editor xu liang
 assistant editors tammy kong, bianca lam
 text / images students and staff
 photographer samson huang

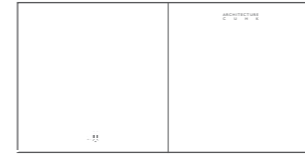
8 / 2021 www.arch.cuhk.edu.hk



notebook v 2005-06 198 x 198mm 96 pages
 liu yuyang | alvin kung



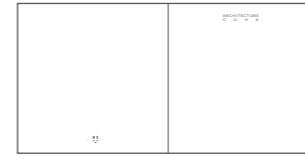
notebook iv 2004-05 198 x 198mm 68 pages
 vito bertin | essy baniassad



notebook iii 2003-04 198 x 198mm 64 pages
 vito bertin | essy baniassad



notebook ii 2002-03 198 x 198mm 52 pages
 vito bertin | essy baniassad



notebook i 2001-02 210 x 210mm 36 pages
 vito bertin | essy baniassad



blackbook 2014-15 198 x 198mm 64 pages
 bruce lonnman | andrew yu



blackbook 2013-14 198 x 198mm 64 pages
 bruce lonnman | andrew yu



blackbook 2012-13 198 x 198mm 64 pages
 thomas chung | andrew yu



blackbook 2011-12 198 x 198mm 52 pages
 thomas chung | andrew yu



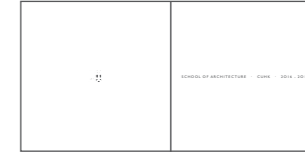
blackbook 2010-11 198 x 198mm 48 pages
 thomas chung | zachary wong



blackbook 2009-10 198 x 198mm 44 pages
 thomas chung | andrew yu



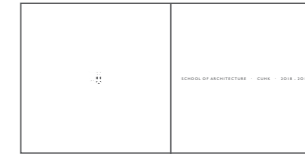
blackbook 2015-16 198 x 198mm 68 pages
 bruce lonnman | andrew yu & xu liang



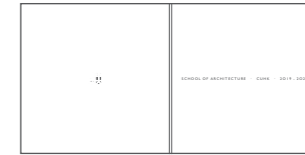
blackbook 2016-17 198 x 198mm 68 pages
 bruce lonnman | xu liang



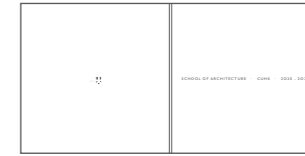
blackbook 2017-18 198 x 198mm 72 pages
 bruce lonnman | xu liang



blackbook 2018-19 198 x 198mm 68 pages
 bruce lonnman | xu liang, janice leung



2019-20 198 x 198mm 68 pages
 bruce lonnman | xu liang, janice leung



2020-21 198 x 198mm 60 pages
 xu liang | tammy kong



2021-22 198 x 198mm 68 pages
 xu liang | tammy kong, bianca lam

