



香港中文大學
The Chinese University of Hong Kong



APPLY NOW

<https://cloud.itsc.cuhk.edu.hk/webform/view.php?id=10184041>



Professional Training
Webinar Course in

Basic Clinical Embryology

The content is equivalent to the course
RMCE5001 in MSc in Reproductive Medicine
and Clinical Embryology (26 hours)

Organiser

Department of Obstetrics
and Gynaecology
The Chinese University of
Hong Kong

Miss Karen Yu
Tel: (852) 3505 1534
kapoyu@cuhk.edu.hk

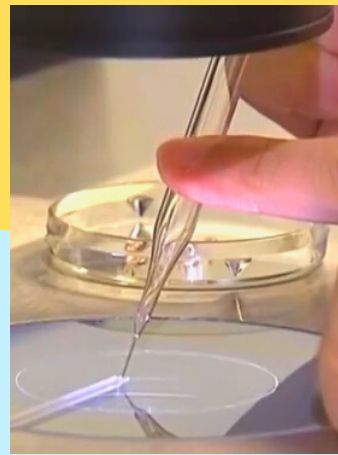
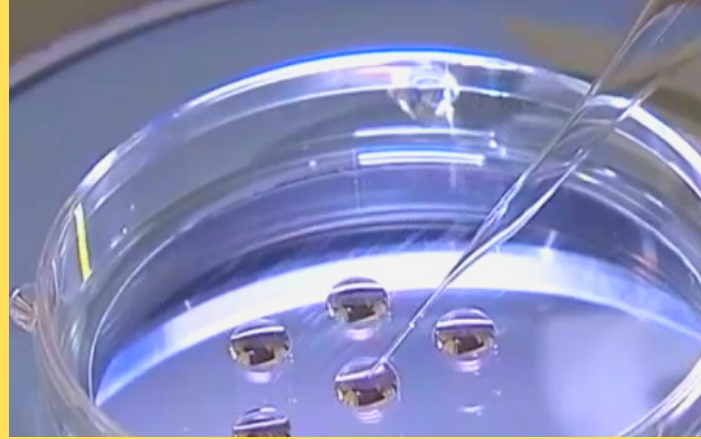
ABOUT THE COURSE

This course provides students with theoretical and practical understanding of human reproductive biology, embryology, covering:

1. Gametogenesis, fertilization, early embryogenesis and pre-implantation development;
2. Embryonic development;
3. Stem cells;
4. Human birth defects (congenital malformations)

UNIT TRANSFER & TUITION FEE REDUCTION

Completion of this course with passing grade and 80% attendance will be considered for unit transfer and tuition fee reduction when you apply for MSc in Reproductive Medicine and Clinical Embryology organized by CUHK in 2022.



ENTRY REQUIREMENT

Applicants should possess a BSc degree or relevant diploma

TARGET PARTICIPANTS

1. Laboratory technicians who are working on clinical embryology;
2. Healthcare professionals who are managing couples with reproductive problems;
3. Commercial professionals who are working in the field of reproductive medicine.

LANGUAGE

English

TUITION FEE

HK\$9,868

REGISTRATION LINK

[HTTPS://CLOUD.ITSC.CUHK.EDU.HK/WEBFORM/VIEW.PHP?ID=10184041](https://cloud.itsc.cuhk.edu.hk/webform/view.php?id=10184041)

ACCREDITATION

26 CME points (RM) accredited by HKCOG
26 CNE / PEM points accredited by CUOG

GRADUATION REQUIREMENT

CERTIFICATE OF COMPLETION

- At least 80% of overall attendance
- A passing grade in the exam

CERTIFICATE OF ATTENDANCE

- At least 80% of attendance only

TIMETABLE

The course is delivered through webinar lectures with 26 teaching hours with details below:

- 10 Oct** (Sat) 09:00-17:00
- 11 Oct** (Sun) 09:00-17:00
- 18 Oct** (Sun) 09:00-16:00
- 3 Nov** (Tue) 18:00-21:00
- 10 Nov** (Tue) 18:00-21:00
- 5 Dec** (Sat) 10:00-12:00 (Exam)