



香港中文大學  
The Chinese University of Hong Kong



# APPLY NOW

<https://cloud.itsc.cuhk.edu.hk/webform/view.php?id=10154942>



Professional Training  
**Webinar** Course in

## Reproductive Medicine and Assisted Reproductive Technology (ART) - Part I Overview

The content is equivalent to the course  
RMCE5009 in MSc in Reproductive Medicine  
and Clinical Embryology (26 hours)

### Organiser

Department of Obstetrics  
and Gynaecology  
The Chinese University of  
Hong Kong

Miss Karen Yu  
Tel: (852) 3505 1534  
[kapoyu@cuhk.edu.hk](mailto:kapoyu@cuhk.edu.hk)

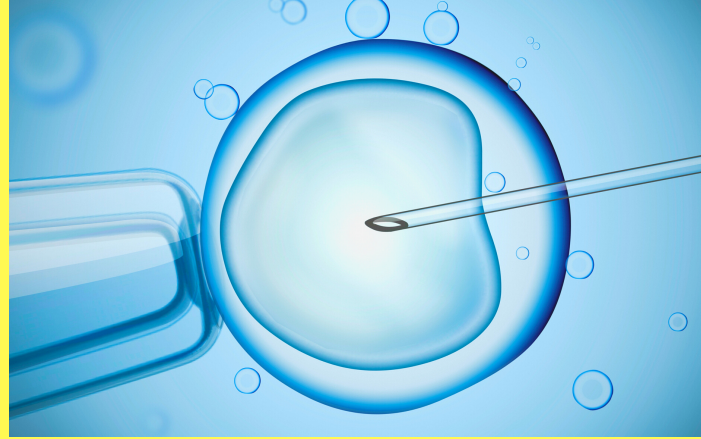
# ABOUT THE COURSE

This course equips you with overall picture of Reproductive Medicine and ART, covering:

1. Reproductive anatomy, physiology, histology and endocrinology;
2. Causes of infertility;
3. Pregnancy complications, medical conditions and IVF

## UNIT TRANSFER & TUITION FEE REDUCTION

Completion of this course with passing grade and 80% attendance will be considered for unit transfer and tuition fee reduction when you apply for MSc in Reproductive Medicine and Clinical Embryology organized by CUHK in 2022.



## TIMETABLE

The course is delivered through webinar lectures with 26 teaching hours with details below:

- 12 Sep** (Sat) 09:00-18:00
- 13 Sep** (Sun) 09:00-18:00
- 15 Sep** (Tue) 18:00-20:00
- 20 Sep** (Sun) 09:00-17:00
- 22 Sep** (Tue) 13:00-14:00 (Seminar)
- 07 Nov** (Sat) 09:30-11:30 (Exam)

## ENTRY REQUIREMENT

Applicants should possess a BSc degree or relevant diploma

## TARGET PARTICIPANTS

1. Healthcare professionals and Chinese medicine practitioner who are managing couples with reproductive problems;
2. Laboratory technicians who are working on clinical embryology;
3. Commercial professionals who are working in the field of reproductive medicine.

## LANGUAGE

English

## TUITION FEE

HK\$9,868

## REGISTRATION LINK

[HTTPS://CLOUD.ITSC.CUHK.EDU.HK/WEBFORM/VIEW.PHP?ID=10154942](https://cloud.itsc.cuhk.edu.hk/webform/view.php?id=10154942)

## ACCREDITATION

26 CME points (RM) accredited by HKCOG  
26 CNE / PEM points accredited by CUOG

## GRADUATION REQUIREMENT

CERTIFICATE OF COMPLETION

- At least 80% of overall attendance
- A passing grade in the exam

CERTIFICATE OF ATTENDANCE

- At least 80% of attendance only