



QS World University Rankings 2019
Faculty of Medicine, CUHK
- 45th in the world
The Chinese University of Hong Kong
- 9th in Asia, and 46th in the world

DEPARTMENT OF OBSTETRICS AND GYNAECOLOGY

MASTER OF PHILOSOPHY IN OBSTETRICS AND GYNAECOLOGY

2-YEAR FULL-TIME OR 3-YEAR PART-TIME RESEARCH POSTGRADUATE PROGRAMME

DOCTOR OF PHILOSOPHY IN OBSTETRICS AND GYNAECOLOGY

3-YEAR/4-YEAR FULL-TIME OR 48-MONTH/64-MONTH
PART-TIME RESEARCH POSTGRADUATE PROGRAMME



WELCOME MESSAGE

The programme provides scientific training in research design, methodology, data analysis and result interpretation. Considerable emphasis is placed on acquisition of knowledge and skills in using advanced clinical and laboratory technologies in O&G. Our research postgraduate programme can equip our students with advanced knowledge and skills to pursue higher clinical, academic and research positions after completion of study.

RESEARCH AREAS

OBSTETRICS

- Gestational Diabetes
- Fetal Growth & Development
- Genetics & Genomics
- Labour and Delivery
- Maternal Cardiac Function
- Pre-eclampsia
- Prenatal Diagnosis and Screening
- Preterm Birth
- Twins

GYNAECOLOGY

- Embryology and Spermatogenesis
- Endometriosis
- Endometrium & Implantation
- Gynaecological Cancers
- Miscarriage
- PCOS
- Pelvic Floor & Urogynaecology



DEPARTMENT HEAD

Prof. LEUNG Tak Yeung
MBChB (CUHK), MD (CUHK), FHKAM(O&G),
FHKCOG, FRCOG
Chairman and Professor, Department of
Obstetrics and Gynaecology, CUHK



DIVISION HEAD

Prof. WANG Chi Chiu, Ronald
MBBS (Hons), MMed (O&G), PhD (Surgical
Sciences in O&G), PhD (Genetics), DipTCM
(Chinese Medicine), DipTCM (Acupuncture),
FRSC (UK), SAB (US)
Professor, Department of Obstetrics and
Gynaecology, CUHK



PROGRAMME STRUCTURE

Degree	Full-time	Part-time
MPhil	24 months	36 months
3-year PhD (with a research Master's degree)	36 months	48 months
4-year PhD (without a research Master's degree)	48 months	64 months

MPhil and PhD programmes are both research oriented (75% of course units). 25% of course units are allocated to guided studies. Elective courses are offered by the University including Intellectual Property, Laboratory Safety, Statistics, Information Searching/Library Skills, Computer Skills, Thesis Writing, Research Ethics, Research Methods, Presentation Skills, and Teaching & Learning.

HONG KONG PHD FELLOWSHIP SCHEME (HKPFS)

HKPFS is established by the Research Grants Councils (RGC) of Hong Kong in 2009 to attract the best and brightest students in the world to pursue their full-time PhD studies in Hong Kong's universities. Details are available under the website of RGC at <https://cerg1.ugc.edu.hk/hkpfs/index.html>

CUHK POSTGRADUATE STUDENTSHIPS

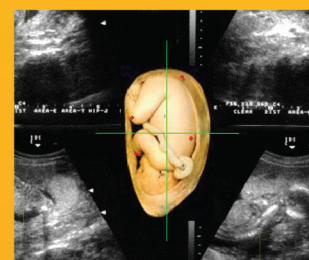
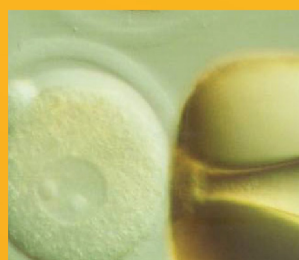
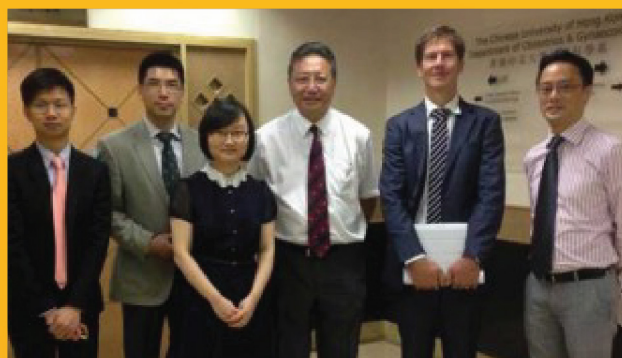
The CUHK Postgraduate Studentship (PGS) is available for full-time research postgraduate students throughout normative study period in 3 or 4 years which is to be decided by the Graduate School. Information of monthly PGS is available at the Graduate School's website: <https://www.gs.cuhk.edu.hk/admissions/scholarships-fees/scholarships>

POSTGRADUATE STUDENT AWARD

A Postgraduate Student Award will be awarded to the student with the best publication in the department in academic year.

ASSESSMENT

English is the medium of language for instruction. Performance will be assessed through participation of seminar and research meeting, attendance on requisite courses in research design, statistics and use of information technology, presentation of the research, and thesis submission.



APPLICATION

ADMISSION REQUIREMENTS

In addition to the general requirements of the Graduate School, applicants should have a recognized Bachelor's degree (for MPhil programme) / Master's degree (for PhD programme) in a field related to life sciences or the degree of MBChB or equivalent.

APPLICATION PROCEDURES

By online application, please visit the Graduate School's website at

<https://www.gs.cuhk.edu.hk/admissions/programme/medicine>

TUITION FEES

Please refer to the website of Graduate School for updated tuition fees:

<https://www.gs.cuhk.edu.hk/admissions/scholarships-fees/scholarships>

CONTACT US

Miss Moon CHEUNG

Tel: (852) 3505 2805 Fax: (852) 2636 0008

Email: obsbyn@cuhk.edu.hk

Department of Obstetrics and Gynaecology
The Chinese University of Hong Kong
1/F, Block E, Prince of Wales Hospital, Shatin, Hong Kong
<http://www.obg.cuhk.edu.hk>

For further information of our department, please scan below QR codes:

Website



Facebook

