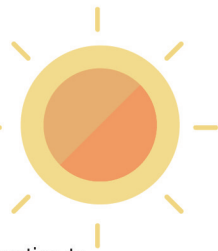


Capacity Building and Education Programmes on End-of-Life Care

End-of-Life (EOL) Care is a complex yet pressing issue in Hong Kong. The quality of life of the patients and their families is at stake. As most, if not all, people in Hong Kong die in hospitals, raising competence among healthcare staff in hospitals dealing with death and dying as well as education to patients, their relatives and the community at large is vital to improving the EOL care in Hong Kong. The capacity building and education programme will address key issues in EOL care in the light of medical ethics to highlight the necessity to respect the wish of patients. Mindset change will be complemented with new pathways and service model in hospitals to bring benefit to patients and their relatives. It is hoped that the programme implemented in the New Territories East, Hong Kong West and Hong Kong East clusters will serve as the useful model for other clusters to consider and adopt in future.



Programme Objectives

- ▶ To empower healthcare staff in both hospital and residential care home for elders (RCHE) setting in the New Territories East, Hong Kong West and Hong Kong East clusters on the significance of quality EOL care
- ▶ To build capacity for healthcare community, patients as well as their relatives and caregivers on quality EOL care including medical ethics
- ▶ To implement quality EOL care model and practices in hospital setting in collaboration with the Hospital Authority

Target Groups

Policy makers, healthcare administrator and professionals, patients and their relatives, the general public

Major Services

To organize seminars, workshops to the following parties:

- ▶ **Healthcare workers in hospitals and RCHEs**
- ▶ **End-of-life patients and their relatives**
- ▶ **Elderly and their family members who may require end-of-life care services**



Capacity Building and Education Programmes on End-of-Life Care

Partner Institution:



香港中文大學
The Chinese University of Hong Kong



香港中文大學
賽馬會老年學研究所
CUHK Jockey Club Institute of Ageing

Initiated and funded by:



The Hong Kong Jockey Club Charities Trust



CUHK Jockey Club Institute of Ageing

The CUHK Jockey Club Institute of Ageing works closely with hospitals of the Hospital Authority to continually improve the quality of medical services. To overcome the challenges brought by the ageing population in Hong Kong, the CUHK Jockey Club Institute of Ageing was established in 2014 with generous donation from the Hong Kong Jockey Club Charities Trust. Under the leadership of the Director, Prof. Jean Woo, Emeritus Professor, Department of Medicine and Therapeutics of CUHK, the Institute is actively pursuing community outreach initiatives, research projects and training programmes to tackle the problems of the ageing population.



Jockey Club End-of-Life Community Care Project

Hong Kong is facing a rapidly ageing population, and the number of elderly suffering from terminal illnesses has also escalated correspondingly. In view of the growing demand for end-of-life care services in the community, The Hong Kong Jockey Club Charities Trust approved around HK\$520 million to initiate the “Jockey Club End-of-Life Community Care Project” (JCECC). Launched in 2016, the ten-year project aims at improving the quality of end-of-life care, enhancing the capacity of service providers, as well as raising public awareness.

JCECC is a multi-disciplinary, multi-institutional and cross-sectoral collaboration to help enhance end-of-life care in Hong Kong with special emphasis on the interface between social and medical systems. Service models are being developed and shaped to provide holistic support to terminally-ill elders in the community and elderly homes. The goal is to enable the city’s older people to have informed choices of care and have an improved quality of life. For more details, please visit

<http://www.JCECC.hk/>



DETAILS AND ENQUIRIES

- Tel 3943 9208
- Fax 3942 0939
- Email cuhkeol@cuhk.edu.hk
- Website www.ioa.cuhk.edu.hk/training/end-of-life-care
- Address Suite 1207, 12/F,
Yasumoto International Academic Park
The Chinese University of Hong Kong
Shatin, New Territories, Hong Kong

