

Pi Ch'iu - Self-Service Print Station 2

Pick up your print Job

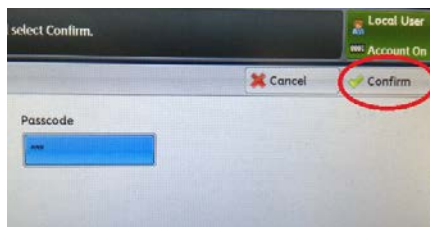
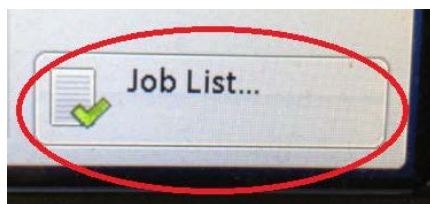
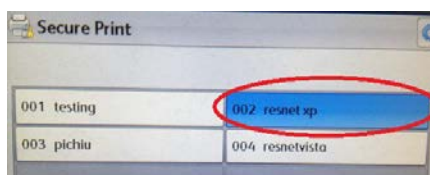
1. 從下列網站下載並安裝驅動程式
Download and install the driver onto personal computer from
<http://www.cuhk.edu.hk/itsc/network/ssp/pichiu/index.html>



2 發送打印工作並設定 "user ID and passcode"
Send your print job with user ID and passcode.



3. 前往 Self-Service 打印機
Go to the print station.



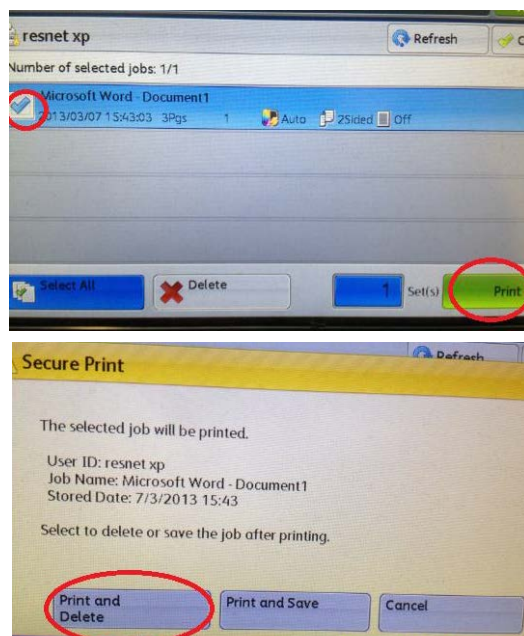
5. **Secure Print**
選取 user ID,
然後輸入密碼
Select your user ID and input the passcode.



4. 插入八達通卡
Insert your Octopus.



6. 選取打印工作，打印文件
Select your print job and print.



7. 確認收費，取回八達通卡
Confirm the charging and collect your Octopus.



Important notes: 重要事項

1. Your print jobs will be stored in the print station for **4 hours**. If you do not release them within the time limit, they will be removed permanently. 所有打印工作只會保存**四小時**
2. All transactions are directly charged through Octopus card and all printing charges are **non-refundable**. 所有交易均透過八達通卡直接收取。打印一經處理，均**不設退款**
3. Remember to get back your Octopus card after use. 使用後謹記取回八達通卡
4. For any enquiry, please submit your case to ITSC Service Desk: <https://servicedesk.itsc.cuhk.edu.hk/>
5. 如有任何查詢，請到電子服務台提交個案 <https://servicedesk.itsc.cuhk.edu.hk/>