



The latest development and new core site of HKIX

Kenneth CHAN

HKNOG 10.0

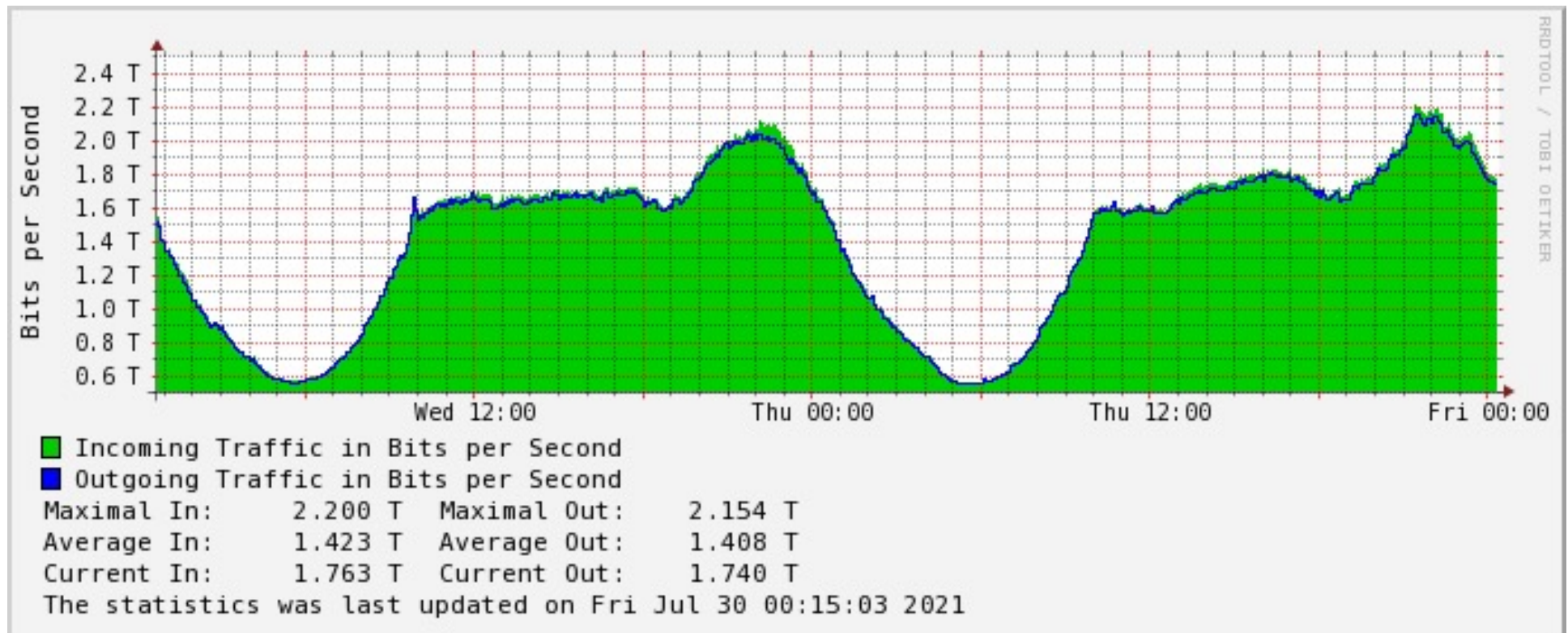
10 Sep 2021

HKIX Today

- Supports both MLPA (Multilateral Peering) and BLPA (Bilateral Peering) over layer 2
- Supports IPv4/IPv6 dual-stack
- More and more non-HK participants
- ~340 different networks (autonomous systems) connected
- 560+ physical connections in total
 - 96 **100GE**, 330+ **10GE** & 130+ **GE**
- 2.29+Tbps (5-min) total traffic at peak
- Annual Traffic Growth **~30%**

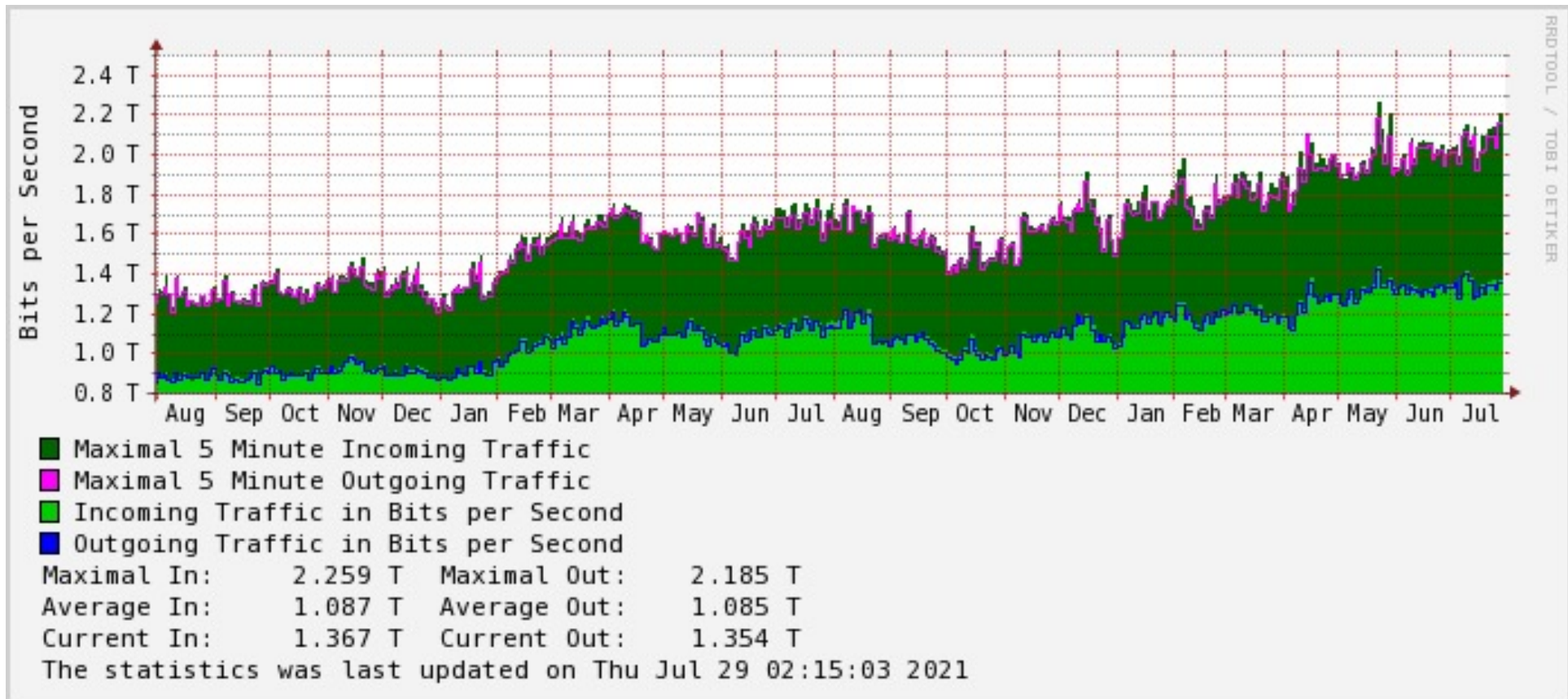
Current HKIX Traffic

Daily Graph (5-min average)



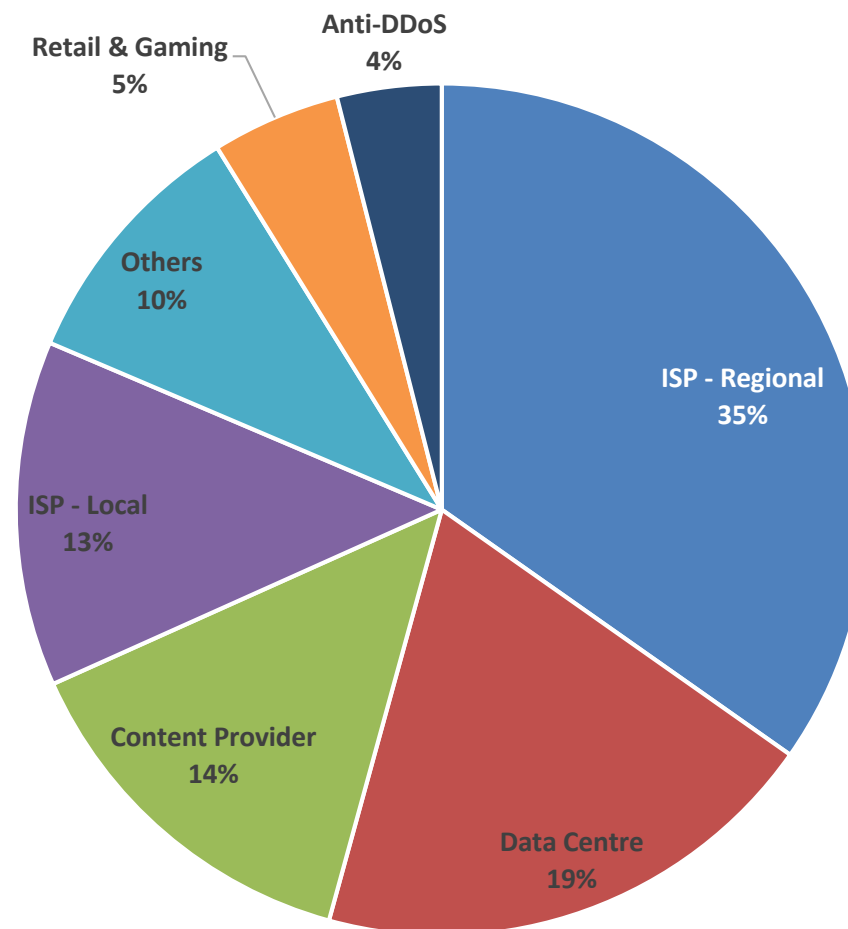
Current HKIX Traffic

Yearly Graph (1-day average)



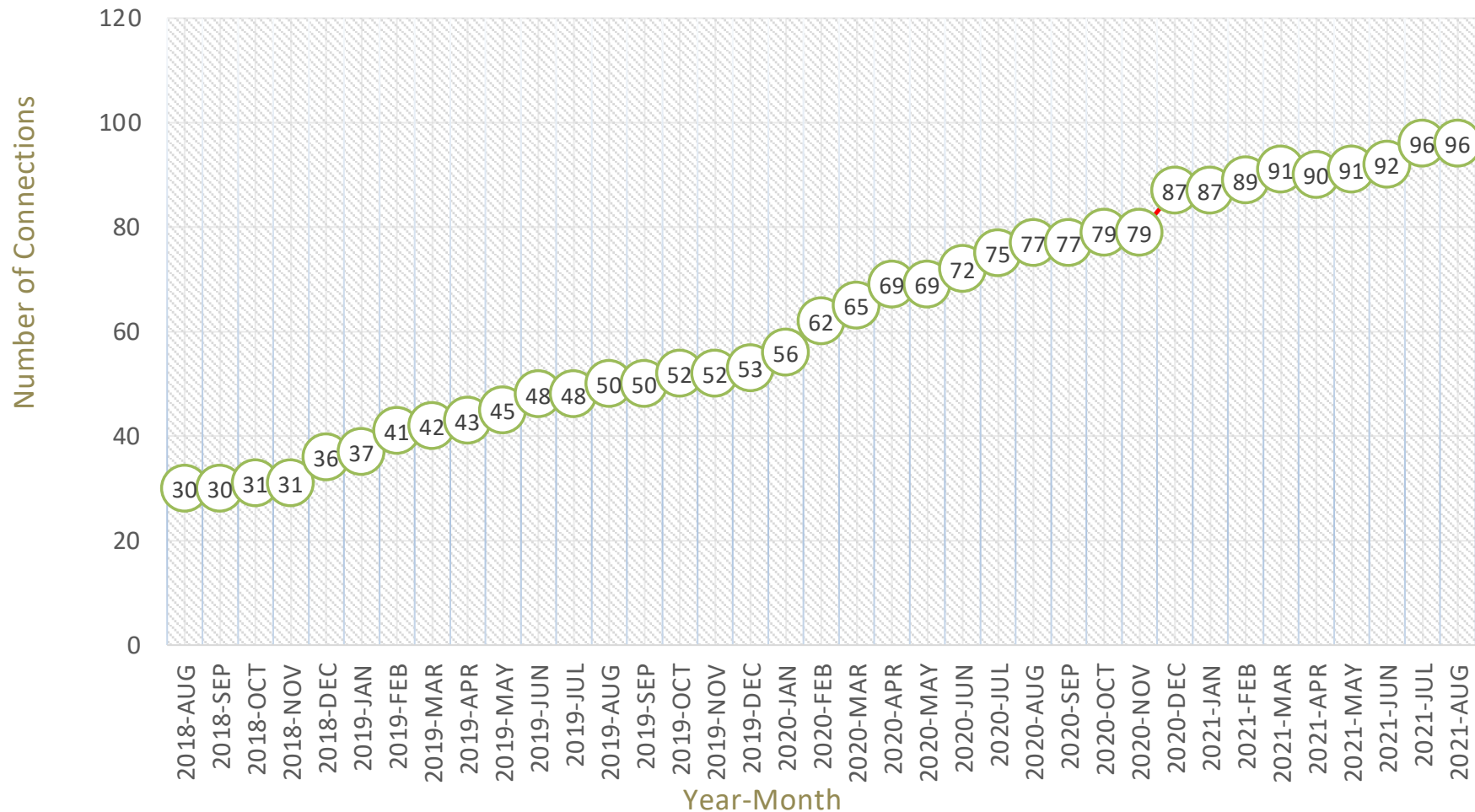
Industry Distribution

Industry Distribution of HKIX Participants
(as at 1 Sept 2021)



100GE Connections at HKIX

Total HKIX 100G Ports Connected (2018 AUG - 2021 AUG)





HKIX 100GE Participants (1/2)

- Akamai
- Alpha Network
- Amazon
- BGP Consultancy
- BIGO
- China Mobile HK
- China Mobile International
- CloudFlare
- Continent
- Converge ICT Solution
- Dataweb Global Group
- DDoS-Guard
- DITO Telecommunity
- Facebook
- FPT Telecom
- G-Core Labs
- Google
- HGC
- HKBN
- HKT
- Huawei International
- Hurricane Electric
- Hutchison Telephone

HKIX 100GE Participants (2/2)



- Limelight
- Microsoft
- Mytek
- Netflix
- Netvigator
- NexusGuard
- PCCW Global
- RETN
- SK Broadband
- Sky Cable
- Taobao
- Telin
- Telekom Malaysia HK
- Telstra
- Tencent
- TVB
- Udomain
- Unicom
- Value
- XLC Global
- Yahoo
- Zscaler

HKIX's 100GE participants at a glance -1

Content Provider	ISP Regional	ISP Local
 	 	
 	 	
 	 	
 	 	
 	 	
 	 	
 		
		

HKIX's 100GE participants at a glance -2

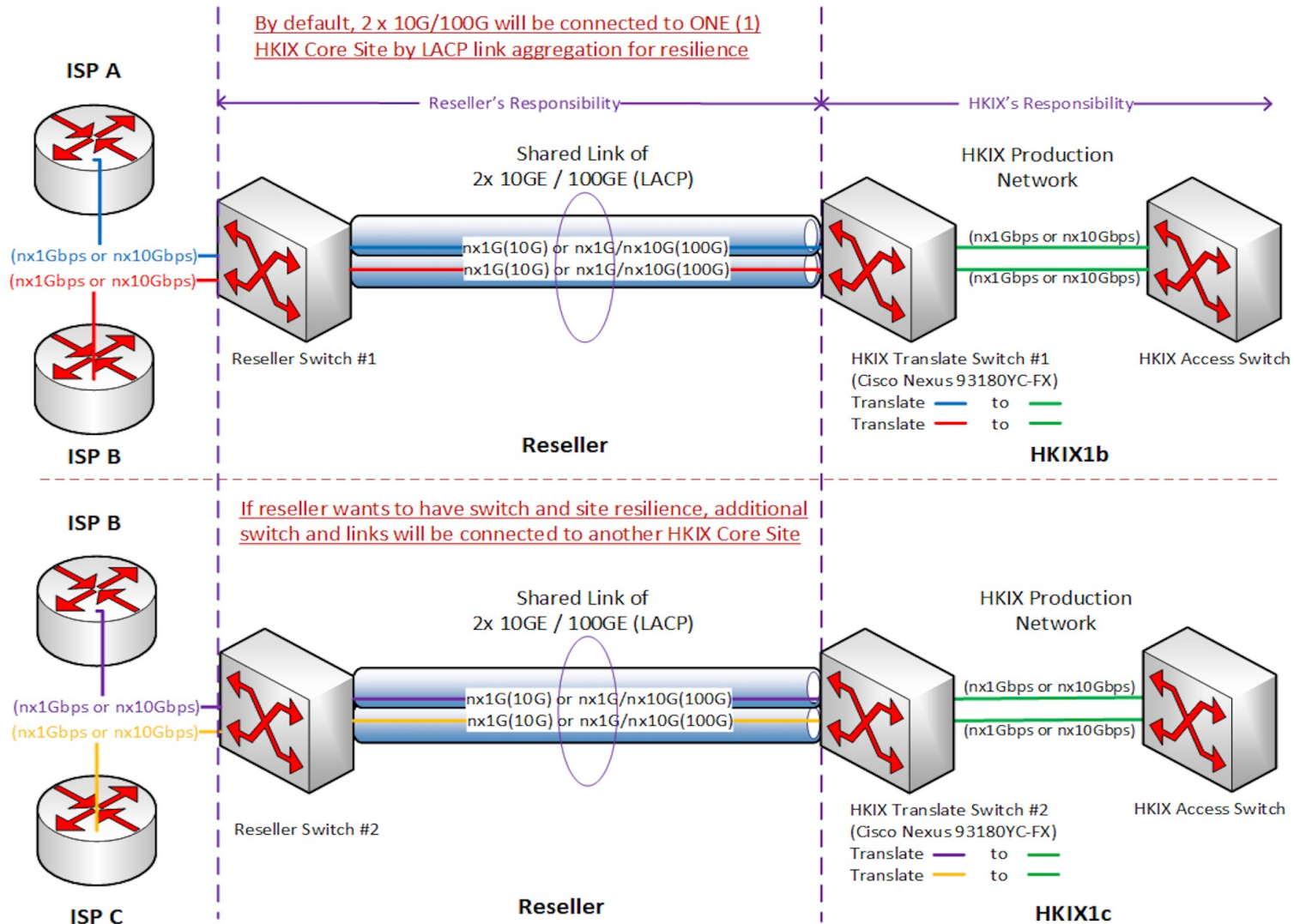
<u>Retail & Gaming</u>	<u>Anti-DDoS Provider</u>	<u>Data Centre</u>	<u>Others</u>
 淘宝网 Taobao.com	 CLOUDFLARE	 UDomain	 HUAWEI
 VALVE	 NEXUSGUARD	 ALPHANETWORKS Solution Pte Ltd	 XLC GLOBAL
	 DDOS-GUARD		 CONTINENT8 technologies
			 DGG Dataweb Global Group
			MYTEK Trading



HKIX Reseller Program

- Phase 2 of HKIX reseller program has been launched in Q4/2020 and available for resellers connecting to HKIX Core Sites
- Non-exclusive arrangement / resellers can be IXPs, Data Centers, local and regional ISPs
- Target for remote peering
- One-stop-shop, flexibility bandwidth, cost efficiency and swift provision of services by resellers
- Authorised Resellers: JPIX, iAdvantage, OneAsia, CommVerge, KDDI and Console Connect
- See <https://www.hkix.net/hkix/Resellers.htm> for details

Reseller Network Topology Diagram





HKIX MLPA Route Servers

IPv4 Route Servers (RS1 & RS2) have been upgraded to ASR1002-HX in Mar 2021.

Routing security is tightening on HKIX route servers:

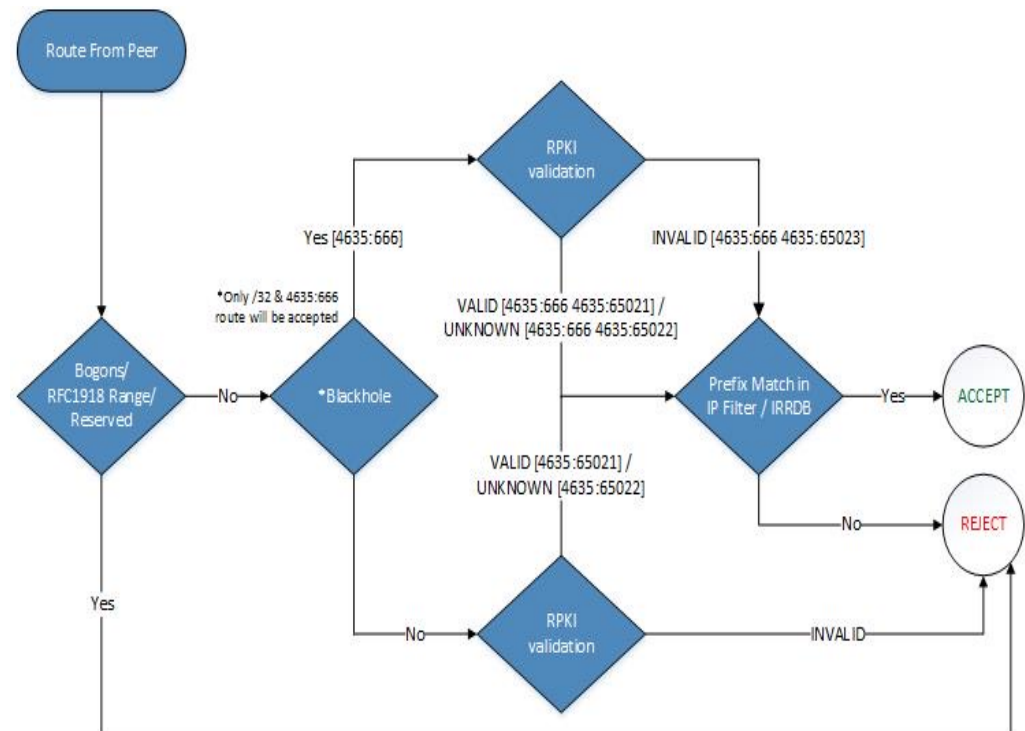
AS number filtering is no longer supported. Please change to use **IRR filtering** if you would like to update the filters for BGP route announcement.

- **IRR filtering (recommended)**
 - Applicable to general HKIX members
 - Use IP prefix list instead of IP address list
 - Filtering by AS-SET and cross check the route advertised by participant
 - Automatically update from Internet Routing Registry database (Please remember to keep your AS-SET updated on IRR database)
 - Participant's AS-SET will be included into HKIX's AS-Set: **AS-HKIX** for announcement
- **IP address filtering (not recommended)**
 - Manual processes are involved
 - Participant needs to submit the change and wait for approval
 - Use IP address for filtering
 - Some participants may not accept your announcement if no AS-SET provided

RPKI Deployment at HKIX

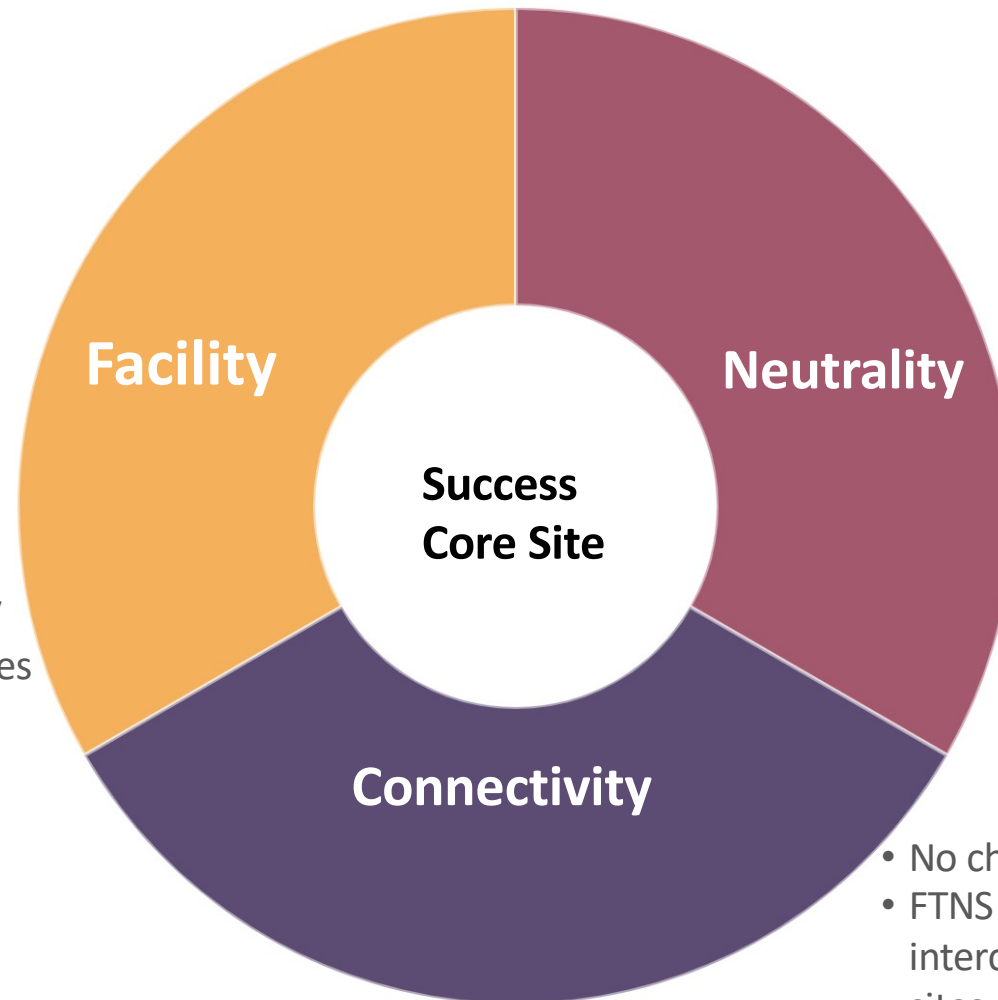
- Fully Implemented on HKIX route servers in June 2020
- Check BGP routes with PRKI validators and drop invalids
- Accept and tag valid and unknown routes with 4635:65021 and 4635:65022 respectively
- Blackhole /32 route will be accepted

	2020		2021	
RPKI Validation	No. of Routes	%	No. of Routes	%
RPKI Valid	100,497	25.7%	162,860	37.3%
RPKI Not Found	289,070	73.9%	271,506	62.2%
RPKI Invalid (Dropped)	1,776	0.45%	2,031	0.47%
Total Routes Received	391,343	100.0%	436,397	100.0%



3 Key Principles for Setting Up HKIX Core Site

- **Data Centre Specifications:**
 - UPS, FM200, CRAC Units
 - Tier 3 or above
 - 24x7 Security control, CCTV
 - 24x7 Remote Hands and Eyes
 - ISO27001



- Carrier Neutral
- Data Centre Neutral
- ISP Neutral

- No charge for cross connect
- FTNS providers and interconnect to all HKIX sites must be sufficient and at lower cost

HKIX New Core Site

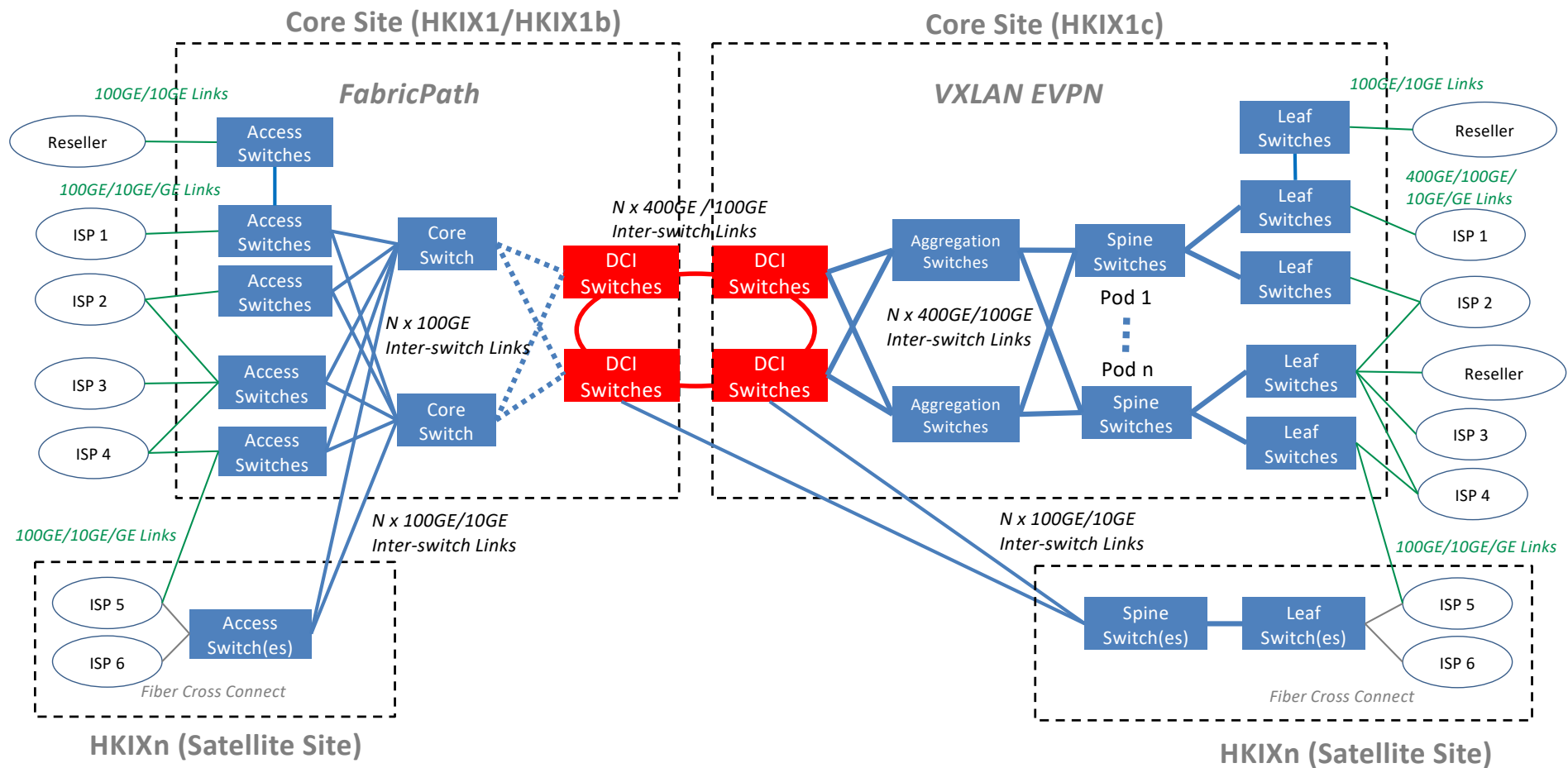
- The new core site HKIX1c is located on Hong Kong Island with independent power grid of core sites of HKIX1 and HKIX1b
- All core sites contain Core Switches and Access Switches interconnected by multiple 100GE/400GE links
- All sites are running in Active-Active mode
- Access Switches at HKIX1, HKIX1b and HKIX1c can serve connections of GE/10GE/100GE and 400GE (HKIX1b & HKIX1c) coming soon from participants
- All sites together provide power resilience, chassis resilience as well as site resilience
- The architecture is highly scalable and can support more satellite sites and resellers outside of CUHK campus

HKIX VXLAN EVPN deployment

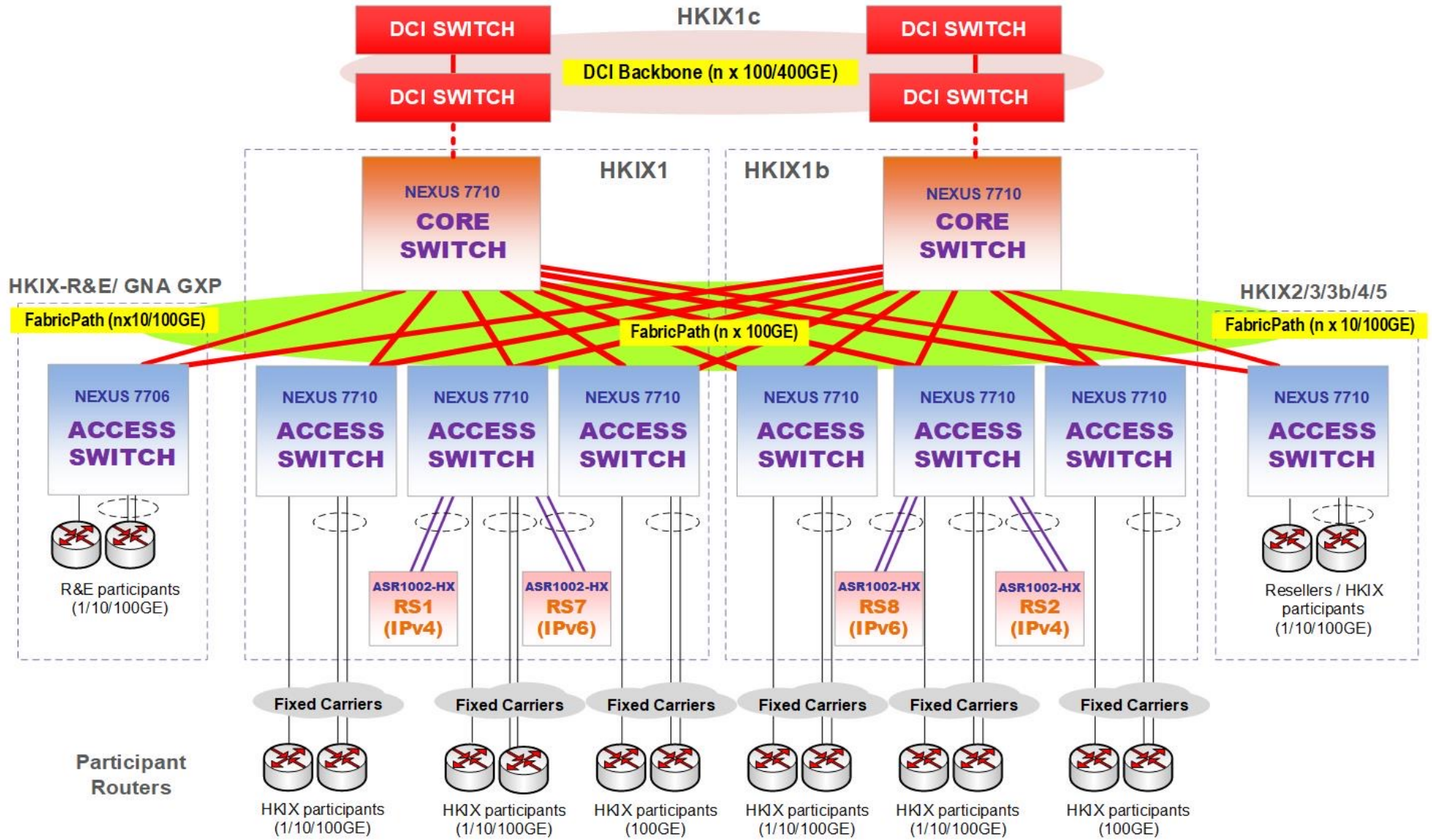
Considerations:

- Underlay routing protocol:
 - BGP vs IGP (OSPF/ISIS)
- Link/Loopback/Management IP assignment
- Interoperability between vendors

HKIX New Architecture



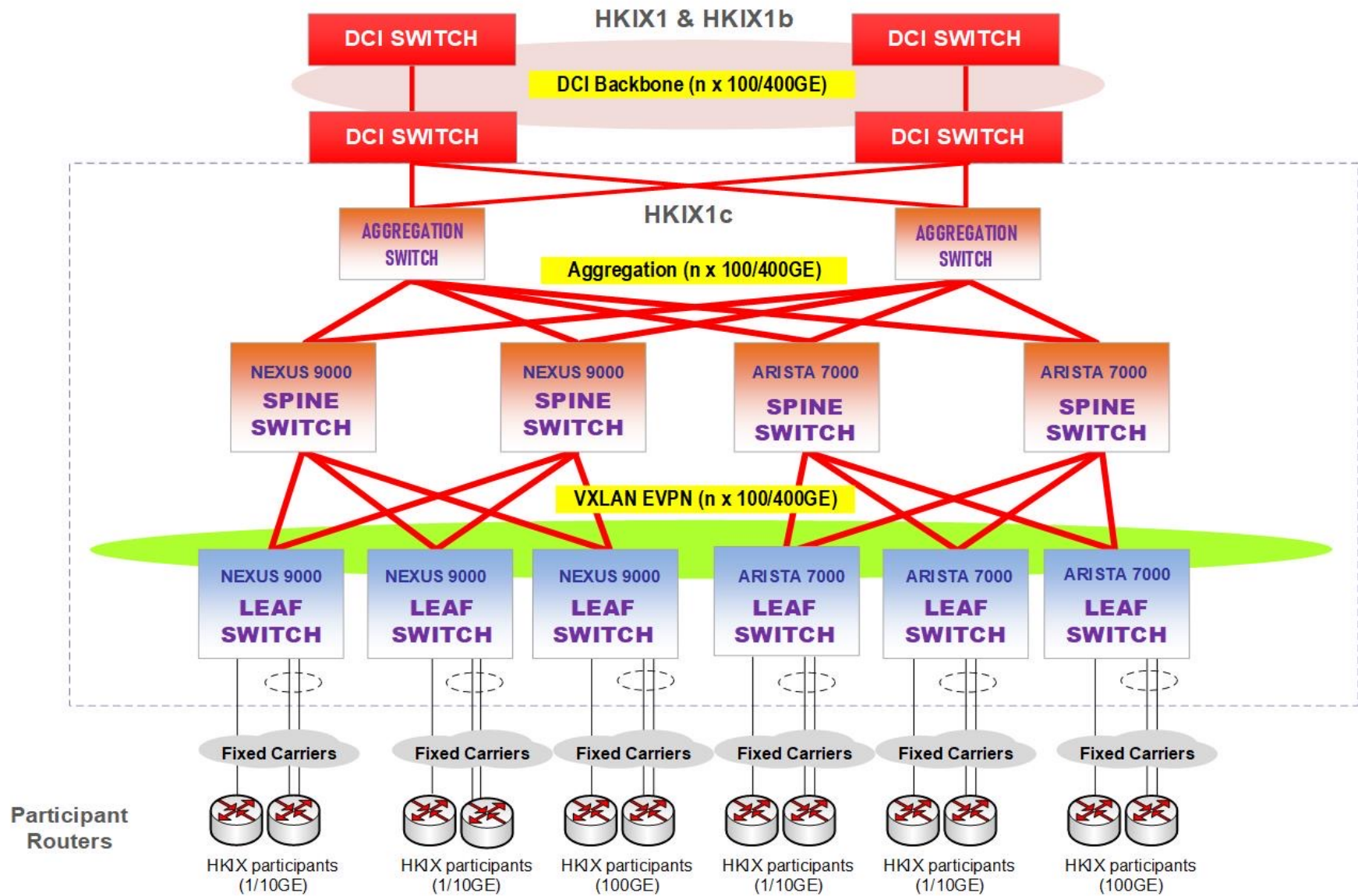
HKIX Network Diagram (Aug 2021)



1. **HKIX1** and **HKIX1b** are the two core sites of HKIX at CUHK while **HKIX1c** is the core site and **HKIX2/3/3b/4/5** are HKIX satellite sites outside of CUHK.
2. HKIX participants are encouraged to connect to multiple sites for site resilience.



HKIX Network Diagram (Aug 2021)



1. **HKIX1** and **HKIX1b** are the two core sites of HKIX at CUHK while **HKIX1c** is the core site and **HKIX2/3/3b/4/5** are HKIX satellite sites outside of CUHK.
2. HKIX participants are encouraged to connect to multiple sites for site resilience.





HKIX1c Migration Schedule

Support and Services	Schedule
Production of HKIX1c	August 2021
Support GE and 10GE Participants	August 2021
Route Servers (IPv4 & IPv6) Migration	Late/2021
Support 100GE Participants	Early/2022
HKIX1 Connections Migration	Mid/2022 – Mid/2024
Support 400GE Participants	Mid/2022
End-of-support and Decommission of HKIX1	Mid/2024



HKIX Planned Works for 2021-22

400GE support
at HKIX Core Sites

DWDM and dark
fibers between
HKIX Core Sites

New open-source
route server
implementation

NTP servers for
HKIX participants

Enhanced portal
services for
participants

HKIX1 migration
to HKIX1b/HKIX1c



Thank You!

For enquiries, please contact us at
info [at] hkix.net