

CENG4480

Lecture 05: Analog/Digital Conversions

Bei Yu

2016 Fall

byu@cse.cuhk.edu.hk



香港中文大學

The Chinese University of Hong Kong

Overview

Preliminaries

Digital to Analog Conversion (DAC)

Analog to Digital Conversion (ADC)

Sample-and-Hold Amplifier



Overview

Preliminaries

Digital to Analog Conversion (DAC)

Analog to Digital Conversion (ADC)

Sample-and-Hold Amplifier



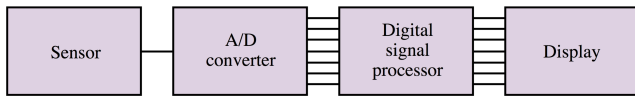
Analog/Digital Conversions

Topics:

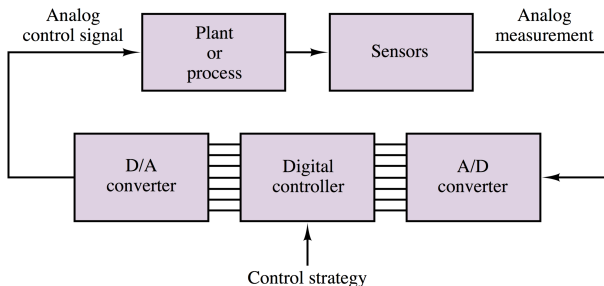
- ▶ Digital to analog conversion
- ▶ Analog to digital conversion
- ▶ Sampling-speed limitation
- ▶ Frequency aliasing
- ▶ Practical ADCs of different speed



Block Diagrams



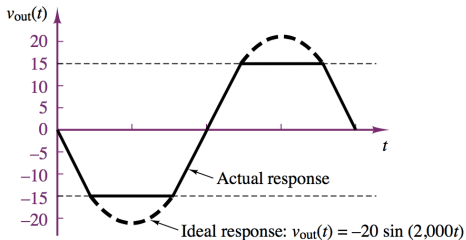
Digital measuring instrument



Digital control system



Voltage Supply Limits

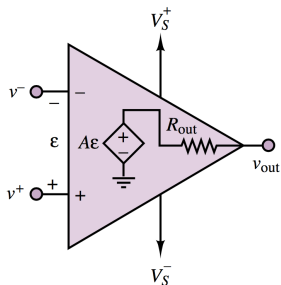


Op-amp output with voltage supply limit ($V_S^+ = V_S^- = 15$)

- ▶ Powered by external DC voltage supplies V_S^+ & V_S^-
- ▶ Amplifying signals **only** within the range of supply voltages



Op-Amp Comparator



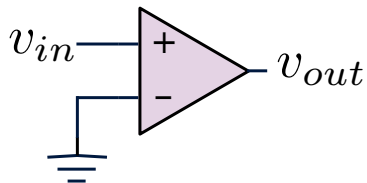
Open-Loop Mode

$$v_{out} = A_V(v^+ - v^-)$$

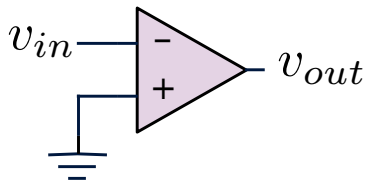
- ▶ Extreme large gain
- ▶ Any small difference ϵ will cause large outputs.



Noninverting & Inverting Comparator

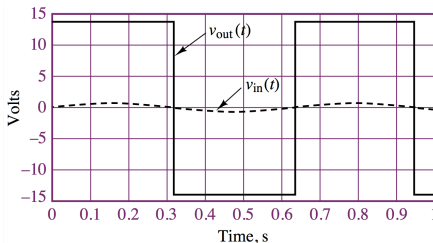
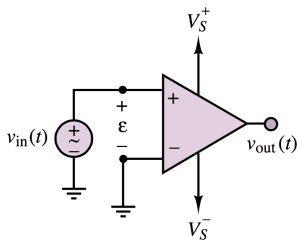


(a) Noninverting comparator



(b) Inverting comparator

Switching waveforms by Comparator



Switching waveforms of non-inverting comparator.

Since $\epsilon = V \cos(\omega t)$, therefore

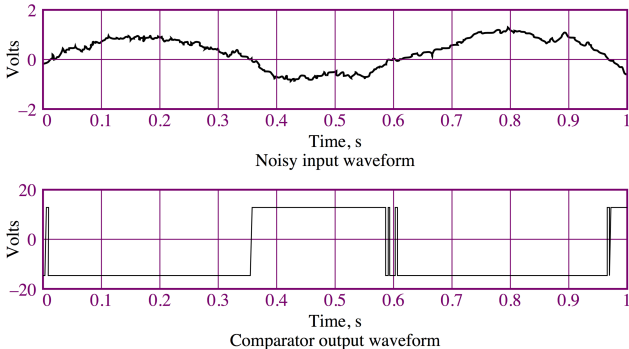
$$\epsilon > 0 \Rightarrow v_{out} = V_{sat}^+$$

$$\epsilon < 0 \Rightarrow v_{out} = V_{sat}^-$$

* V_{sat} : saturation voltage (e.g., 15-V supplies is approximately 13.5 V)



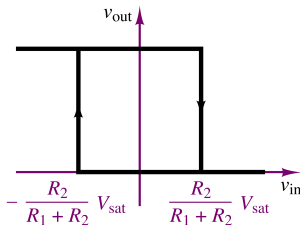
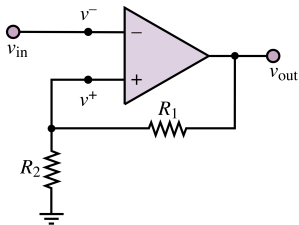
Limitation of Conventional Comparator



- ▶ In the presence of noisy inputs
- ▶ Cross the reference voltage level repeatedly
- ▶ Cause multiple triggering

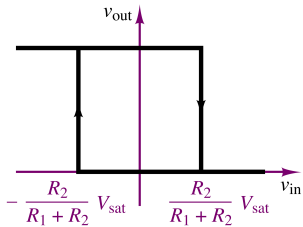
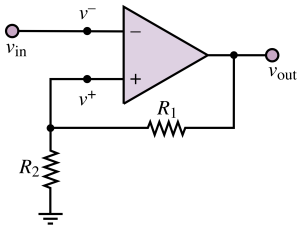


Schmitt Trigger



- ▶ Based on **Inverting** comparator
- ▶ Positive feedback
- ▶ (+) Increase the switching speed
- ▶ (+) Noise immunity





Question: prove two reference voltages of schmitt trigger.



Overview

Preliminaries

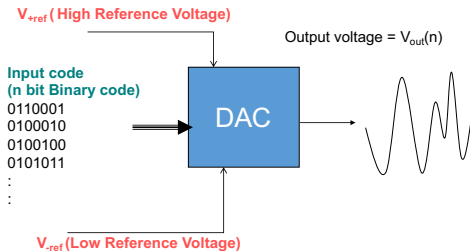
Digital to Analog Conversion (DAC)

Analog to Digital Conversion (ADC)

Sample-and-Hold Amplifier



Digital-to-Analog Converter (DAC)

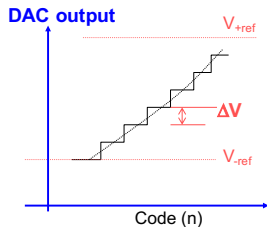
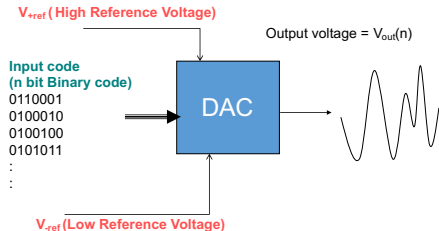


$$\begin{aligned}V_{out} &= (b_3b_2b_1b_0)_2 \\ &= (b_3 \cdot 2^3 + b_2 \cdot 2^2 + b_1 \cdot 2^1 + b_0 \cdot 2^0)_{10} \\ &= (8b_3 + 4b_2 + 2b_1 + b_0)\Delta v + V_{-ref}\end{aligned}$$

Δv : smallest step size by which voltage can increase



How to Determine Δv ?



$$\Delta v = \frac{V_{+ref} - V_{-ref}}{2^n},$$

where n is the **bit#** of input digital signal.



DAC Characteristics

Glitch:

A transient spike in the output of a DAC that occurs when more than one bit changes in the input code.

- ▶ Use a low pass filter to reduce the glitch
- ▶ Use **sample-and-hold** circuit to reduce the glitch

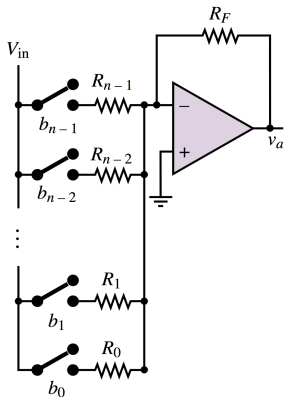
Settling time:

Time for the output to settle to typically $1/4$ LSB after a change in DA output.



DAC Type 1: Weighted Adder DAC

Similar to [summing amplifier](#):

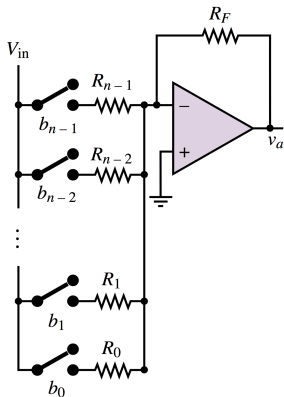


$$v_a = -\left(\frac{R_F}{R_i} \cdot b_i \cdot v_{in}\right)$$



DAC Type 1: Weighted Adder DAC

Similar to summing amplifier:



$$v_a = -\left(\frac{R_F}{R_i} \cdot b_i \cdot v_{in}\right)$$

If we select $R_i = \frac{R_0}{2^i}$:

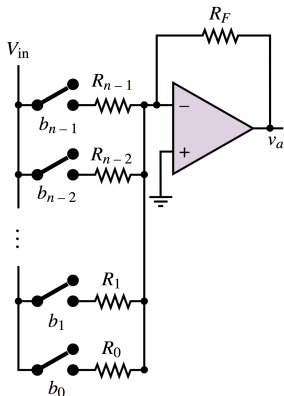
$$v_a = -\frac{R_F}{R_0}(2^{n-1}b_{n-1} + \dots + 2^1b_1 + 2^0b_0) \cdot v_{in}$$

Note here V_{-ref} is 0 (ground)



DAC Type 1: Weighted Adder DAC

Similar to summing amplifier:



$$v_a = -\left(\frac{R_F}{R_i} \cdot b_i \cdot v_{in}\right)$$

If we select $R_i = \frac{R_0}{2^i}$:

$$v_a = -\frac{R_F}{R_0}(2^{n-1}b_{n-1} + \dots + 2^1b_1 + 2^0b_0) \cdot v_{in}$$

Note here V_{-ref} is 0 (ground)

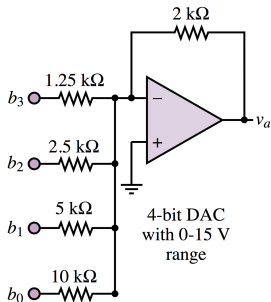
Limitations:

- ▶ Impossible to fabricate a **wide range** of resistor values in the same IC chip

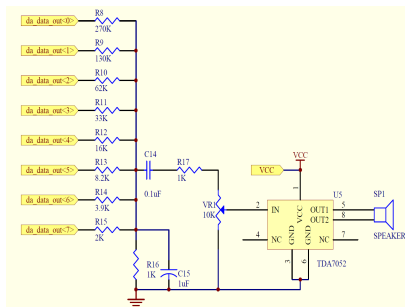


Question: 4-bit DAC

For given $(b_3b_2b_1b_0) = \{(1111), (0000), (1010)\}$, calculate v_a .



Practical Resistor Network DAC and Audio Amplifier

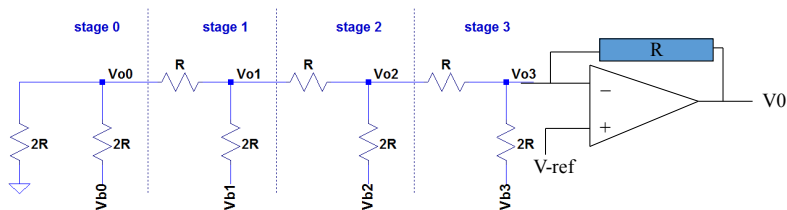


Data Bit	Ideal R	Real R
0 (LSB)	256K	270K
1	128K	130K
2	64K	62K
3	32K	33K
4	16K	16K
5	8K	8.2K
6	4K	3.9K
7 (MSB)	2K	2K

- ▶ Not perfect, but okay.



DAC Type 2: R-2R DAC

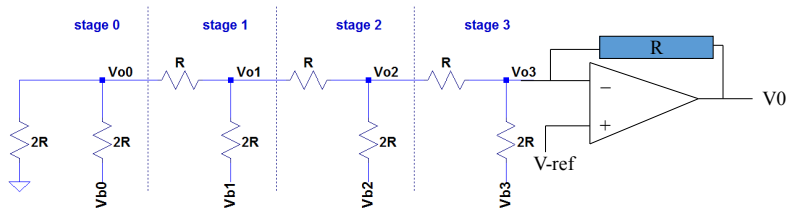


Motivations:

- ▶ Use only **two** values of resistors which make for easy and accurate fabrication and integration
- ▶ At each node, current is split into 2 equal parts
- ▶ The most popular DAC



DAC Type 2: R-2R DAC

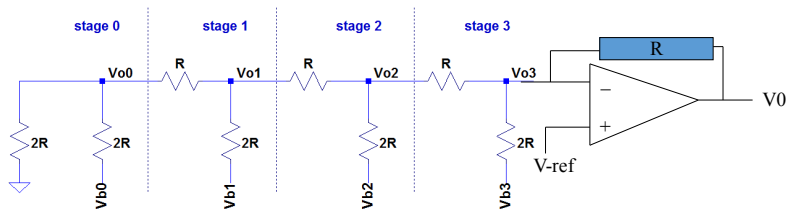


Reference:

<http://www.tek.com/blog/tutorial-digital-analog-conversion--r-2r-dac>



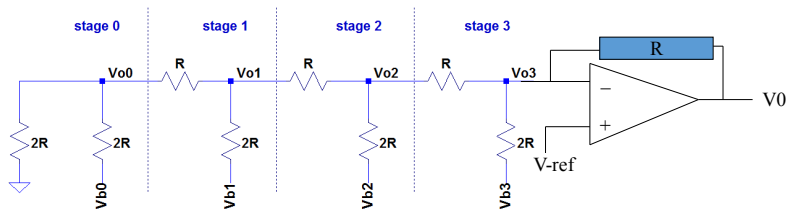
DAC Type 2: R-2R DAC



Given I as input value (n bit):

$$V_{o3} = V_{-ref} + I \cdot \frac{V_{+ref} - V_{-ref}}{2^n},$$





Question: R-2R DAC

For given $(b_3b_2b_1b_0) = \{(1111), (0000), (1010)\}$, calculate v_{o3} .



Overview

Preliminaries

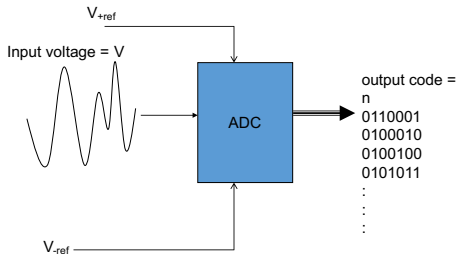
Digital to Analog Conversion (DAC)

Analog to Digital Conversion (ADC)

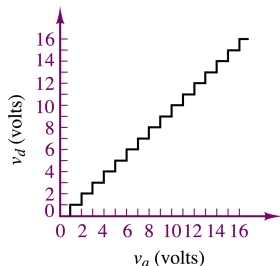
Sample-and-Hold Amplifier



Analog-to-Digital Converter (ADC)



Quantization



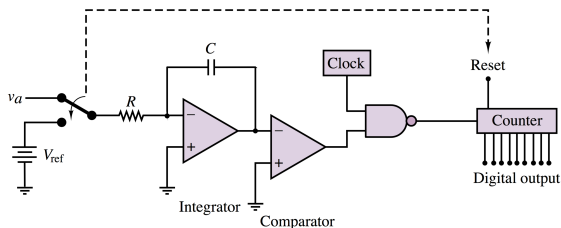
Quantized voltage Binary representation

v_d	b_3	b_2	b_1	b_0
0	0	0	0	0
1	0	0	0	1
2	0	0	1	0
3	0	0	1	1
4	0	1	0	0
⋮		⋮		
14	1	1	1	0
15	1	1	1	1

- ▶ Convert an analog level to digital output
- ▶ Employ $2^n - 1$ intervals (n : bit#)
- ▶ v_a : analog voltage
- ▶ v_d : output digital voltage



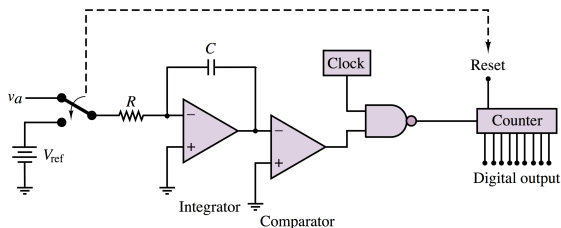
ADC Type 1: Integrating ADC



- ▶ Accumulate the input current on a capacitor for a fixed time
- ▶ Then measure time (T) to discharge the capacitor
- ▶ When cap is discharged to 0 V, comparator will stop the counter



ADC Type 1: Integrating ADC

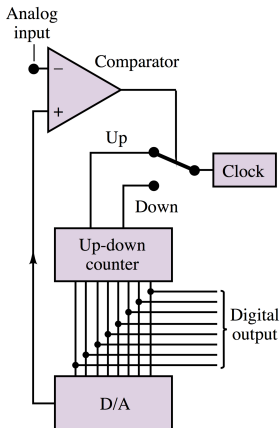


- ▶ Accumulate the input current on a capacitor for a fixed time
- ▶ Then measure time (T) to discharge the capacitor
- ▶ When cap is discharged to 0 V, comparator will stop the counter

Limination: Slow



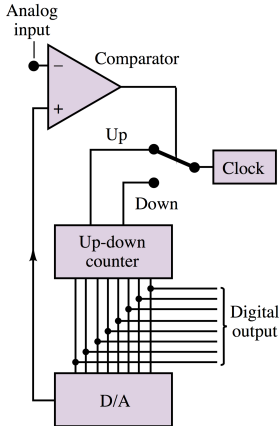
ADC Type 2: Tracking ADC



- ▶ ADC repeatedly compares its input with DAC outputs
- ▶ Up/down count depends on input/DAC output comparison



ADC Type 2: Tracking ADC



- ▶ ADC repeatedly compares its input with DAC outputs
- ▶ Up/down count depends on input/DAC output comparison

Limination: Slow

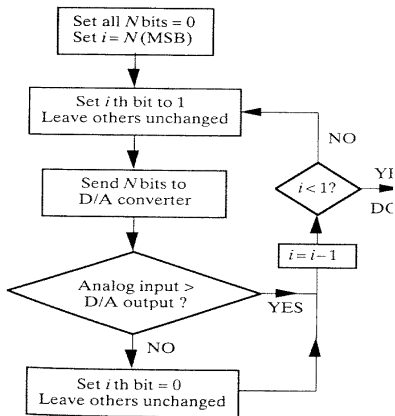


ADC Type 3: Successive Approximation

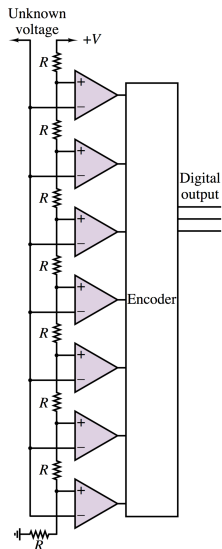
- ▶ Replace “Up-down counter” by “control logic”
- ▶ Binary search to determine the output bits
- ▶ still slow although faster than types 1 & 2



Flow chart of Successive-approximation ADC



ADC Type 4: Flash ADC

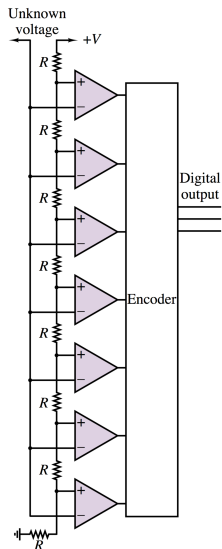


- ▶ Divide the voltage range into $2^n - 1$ levels
- ▶ Use $2^n - 1$ comparators to determine what the voltage level is
- ▶ Fully parallel

Pros:



ADC Type 4: Flash ADC



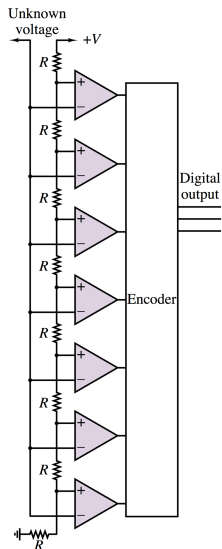
- ▶ Divide the voltage range into $2^n - 1$ levels
- ▶ Use $2^n - 1$ comparators to determine what the voltage level is
- ▶ Fully parallel

Pros:

- ▶ Very fast for high quality audio and video
- ▶ **Sample and hold** circuit **NOT** required



ADC Type 4: Flash ADC



- ▶ Divide the voltage range into $2^n - 1$ levels
- ▶ Use $2^n - 1$ comparators to determine what the voltage level is
- ▶ Fully parallel

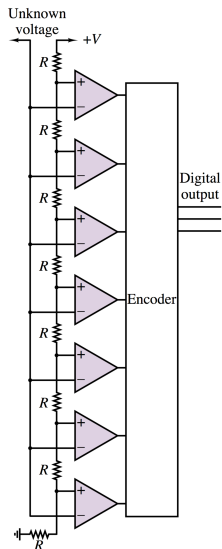
Pros:

- ▶ Very fast for high quality audio and video
- ▶ **Sample and hold** circuit **NOT** required

Cons:



ADC Type 4: Flash ADC



- ▶ Divide the voltage range into $2^n - 1$ levels
- ▶ Use $2^n - 1$ comparators to determine what the voltage level is
- ▶ Fully parallel

Pros:

- ▶ Very fast for high quality audio and video
- ▶ Sample and hold circuit **NOT** required

Cons:

- ▶ Very expensive for wide bits conversion



Overview

Preliminaries

Digital to Analog Conversion (DAC)

Analog to Digital Conversion (ADC)

Sample-and-Hold Amplifier



Sample-and-Hold Amplifier

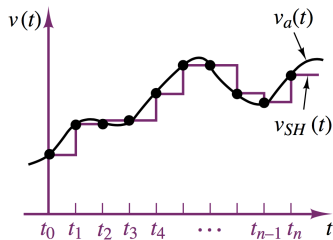
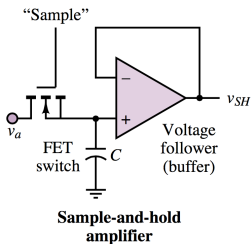
Motivations:

When a slow ADC is used to sample a fast changing signal only a short sampling point can be analyzed

- ▶ To resolve uncertainty during ADC
- ▶ “freeze” the value of analog waveform for a time sufficient for the ADC to complete its task



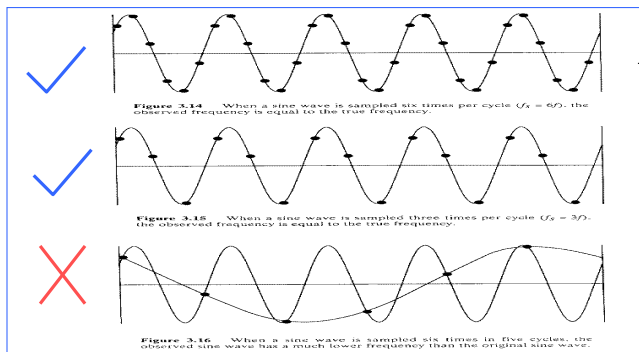
Sample-and-Hold Amplifier



- ▶ A MOSFET analog switch is used to “sample” analog waveform
- ▶ While MOSFET conducts, charge the “hold” capacitor



Good Sample, Bad Sample



- ▶ When sampling 6 times per cycle, close to the original.
- ▶ when sampling 3 times per cycle, less reliable but frequency is equal to original.
- ▶ When sampling 6 times per 5 cycles, frequency is different.

