

精選作品

Selected Thesis Projects

王滄仟

材料的真實性: 以中國侗族村落的木材建築探索真實的意義 (最佳畢業作品)

在現今社會，無論是城市還是農村，人們似乎遺忘了當代文化和傳統價值之間的矛盾，而習慣活於一種流行建築風格。作品回歸對自然和物質的討論，並試圖透過木材建築，尋找生活中所缺失的真實性。

Beryl Wong Yuk-tsin

Material Authenticity: Searching for Authenticity Through Wood in Dong Minority Villages, China (Best Thesis Project)

In today's world of inauthenticity, people have forgotten how to negotiate between contemporary culture and traditional values but live with a "fashionable" architectural style, whether in urban or rural contexts. By returning to a discussion of nature and material through the use of wood in architectural construction, this project searches for the missing authenticity in our living environments.



葉怡欣

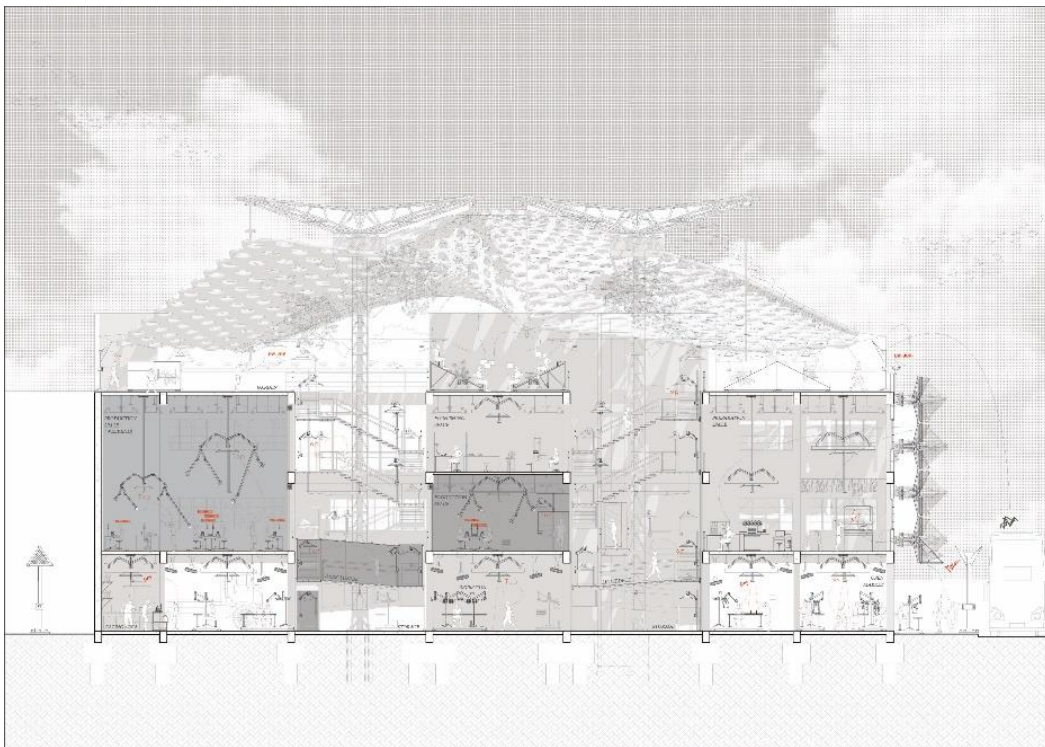
人·機械·環境共生：重構土瓜灣盲人互動工廠 (最佳畢業作品)

具 50 多年歷史的土瓜灣盲人工廠將會拆卸重建，在此工作多年的盲人工友去向未明。為了讓這班工友可繼續自力更生，作品提議原址活化工廠並保留其現有用途，同時透過機械建築，重新打造有如博物館的互動式建築空間，把盲人製衣過程開放予大眾，讓視障人士多跟社區接觸、交流，從而打破他們之間的隔閡。

Celia Yeh Yi-hsin

Human-Machine-Environment Ecology: An Experimental Performance Factory for the Blind in To Kwa Wan (Best Thesis Project)

The factory for the blind located in To Kwa Wan for over 50 years is going to be redeveloped, while the career prospect of the blind workers remains unclear. This project proposes to revitalize the factory to retain its existing uses. It explores how robotic architecture could create an interactive museum-like space to open up the blind factory to the public, heightening interactions between the visually impaired and the community.



黃靖嵐

緩慢的禮讚 – 現代速度中的慢工廠

香港人生活節奏急促，愈來愈便捷的公共交通系統更助長這種生活方式。作品以慢活運動為背景，嘗試探討如何在現代城市的速度下，透過建築提倡緩慢之美。她以香港唯一的地面交通樞紐紅磡站為試點，構建一座與車站相連的「慢工廠」，為無法應付現代速度壓迫的都市人提供實驗性「緩慢治療」以及短暫的喘息場所，從而喚醒人們在日常快速流動中對個人身心的反思。

Carol Wong Ching-nam

In Praise of Slowness – A Slow Factory as Alternative in Modern Speed

The modern and efficient transportation system is one of the driving forces of the hectic pace of life in Hong Kong. Through architectural design, this project explores how slowness can be contextualized in a fast-paced modern city. Situated in Hong Kong's only above-ground transport interchange, Hung Hom Station, a Slow Factory is proposed to offer experimental "slow therapy" and a place of escape to daily commuters who can no longer cope with the stressful lifestyle, calling for a reflection on one's body and mind.



黃朗軒

後數位木建築: 探索懸鏈線結構

作品研究傳統層膠木材的製造方法，並與輕量建築及參數化設計整合，將建築設計和建造過程的複雜程度減到最低。透過數碼化設計，促進非重複，高性能，且可持續的木建築設計。

Nichol Wong Long-hin

Post-digital Timber Architecture: Expanding Catenary Structure

The thesis project expands methods for traditional glue-laminated timber construction, with the aim to practically integrate them into hyper light-weight structural systems. By using digital design tools that reduce construction complexity while maximizing spatial quality, the project explores non-standard, high-performance and sustainable timber architectural design.

