



Prequalification Interview



- In October 2006, 33 architectural firms including architects, planners and environmental consultants were invited to express interest on the Campus Master Plan (CMP) Project.
- A briefing session and campus tour were arranged in January 2007 for 9 interested architectural firms.
- In March 2007, consultants were invited to make presentation to the Steering Committee on CMP and 4 consultants were shortlisted to enter the second stage limited design competition.

Invitation of Preliminary Master Planning Proposals (PMPP)



- The drafting of the PMPP aims to stimulate discussions and thoughts among University members.
- In March 2007, 4 renowned architectural teams were shortlisted to prepare the PMPP:
 - Aedas Ltd / Edward Cullinan Architects (UK)
 - Andrew Lee King Fun & Associates Architects Ltd / Moore Ruble Yudell Architects & Planners Ltd (USA)
 - Dennis Lau & Ng Chun Man Architects & Engineers (HK) Ltd. / Woods Bagot (Australia)
 - P&T Architects & Engineers Ltd / Perkins + Will (USA)
- In June 2007, shortlisted consultants submitted preliminary proposals on the design concept, methodology and approach of the CMP, as well as fee proposals and planning models.

Selection by the Steering Committee



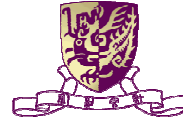
- Campus master planning is regarded as an ongoing process and the PMPP is only a measure of the planning approach of the team and their capability.
- The Steering Committee focused on selecting the team rather than the preliminary submissions.
- In January – February 2008, the Steering Committee conducted a two-stage assessment including the technical assessment and the fee assessment according to the Selection Guidelines for the Consultant.

Selection Guidelines



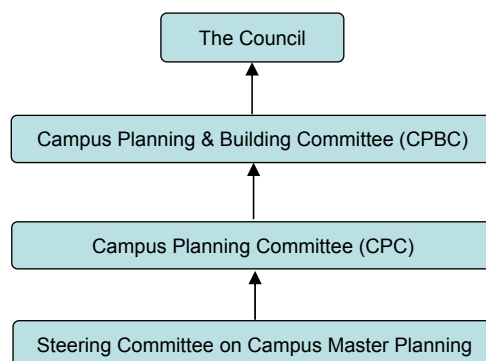
- Technical Proposal / Fee Proposal Weighting = 70:30
- Selection Guidelines:
 - Response to the Brief (40%)
 - Planning Approach & Methodology (30%)
 - Composition of Study Team & Work Programme (30%)
- Team dedication & strengths, innovativeness, practicality, sustainability, heritage preservation, environmental conservation, pedestrian and vehicular traffic, landscape & building approach, and cost are important considerations.

Recommendation by the Steering Committee



- After rigorous assessment, Aedas Limited / Edward Cullinan Architects (UK) is the highest-scoring tender recommended by the Steering Committee as the Consultant for the CMP.
- Aedas Limited / Edward Cullinan Architects (UK) is praised for:
 - creative and practicable thinking
 - understanding of the University's characteristics
 - respect for the University's traditions and the unique college system
 - competence to come up with suggestions that suit the University's development needs

Approval Process



Aedas Limited / Edward Cullinan Architects (UK) was selected by the University as the Consultant to undertake the drafting of the CMP.



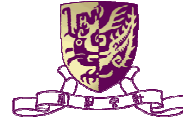
Strengths of Aedas Limited / Edward Cullinan Architects (UK)

Strengths and Expertise in CMP



- Aedas Limited:
 - The 4th largest architectural practice in the world.
 - Strong presence in educational sector with many awards in institutional design.
 - Carried out design works for many world-renowned institutions including The University of Birmingham in the UK, Columbia University in New York, Dillard University in New Orleans, and Vanderbilt University in Nashville in the US.

Strengths and Expertise in CMP



- Edward Cullinan Architects (UK):
 - World-renowned architectural firm which has taken part in many world-class projects including the University of Cambridge and Singapore Management University, with a continuing focus on energy conservation and sustainability.
 - Developed a wide range of campus master planning projects for numerous educational institutions:
 - **Singapore Management University:** Masterplan for the new 239,000m² Singapore Management University.
 - **University of East London – Docklands Campus:** A new campus on a brownfield site, University of East London
 - **Liverpool University:** Buro Happold and ECA's strategy for future development, commissioned by Liverpool University.
 - **Charlotte University:** A masterplan to expand the University of North Carolina's capacity from 15,000 to over 25,000 students.

Lecture on the works of Edward Cullinan Architects



- Date: 25 Feb 2008
- Time: 6:00 – 8:00 pm
- Venue: Tse Chiu Kit Room, G/F, Elisabeth Luce Moore Library, Chung Chi College

