

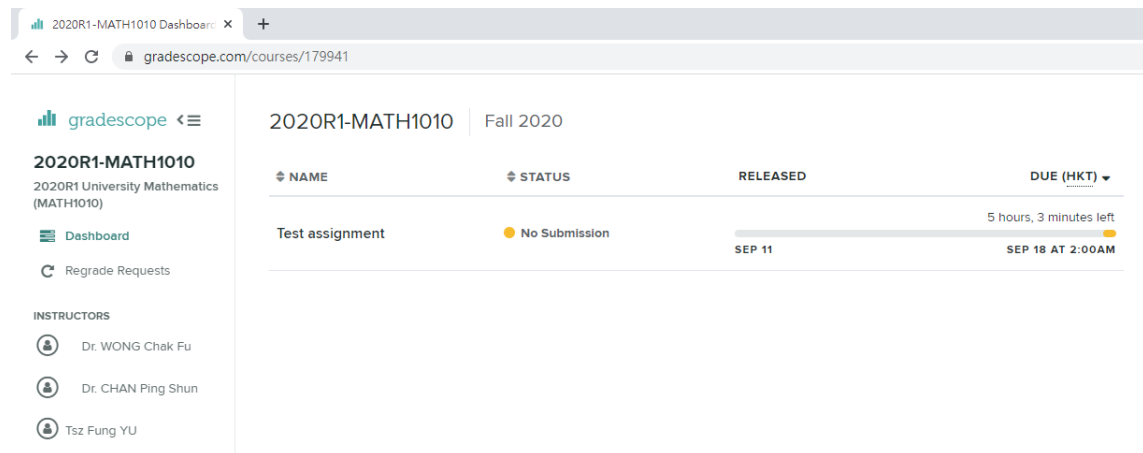
THE CHINESE UNIVERSITY OF HONG KONG
Department of Mathematics
MATH1010 University Mathematics
2020-2021 Term 1

All assignments will be submitted and graded on Gradescope under Blackboard.
You can view your grades and submit regrade requests here as well.

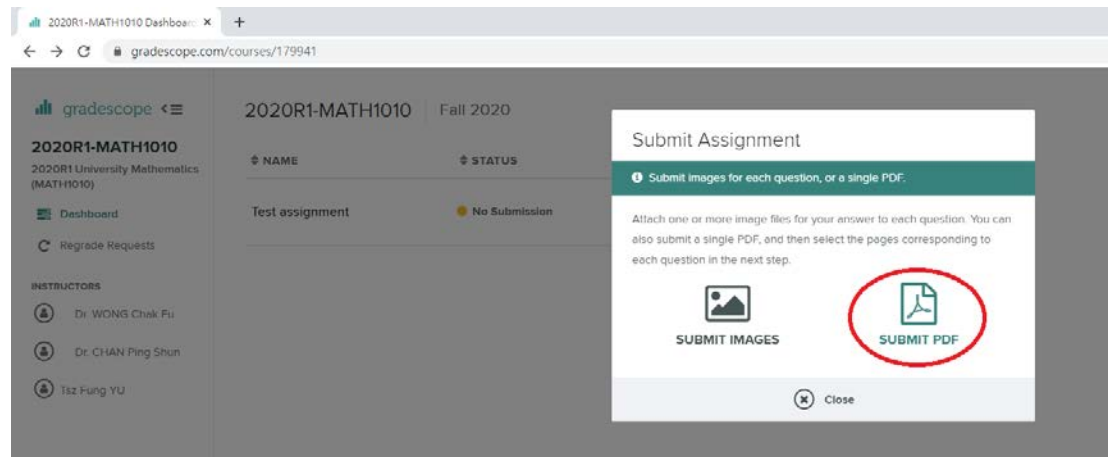
Submission Guidelines:

How to submit an assignment using Gradescope:

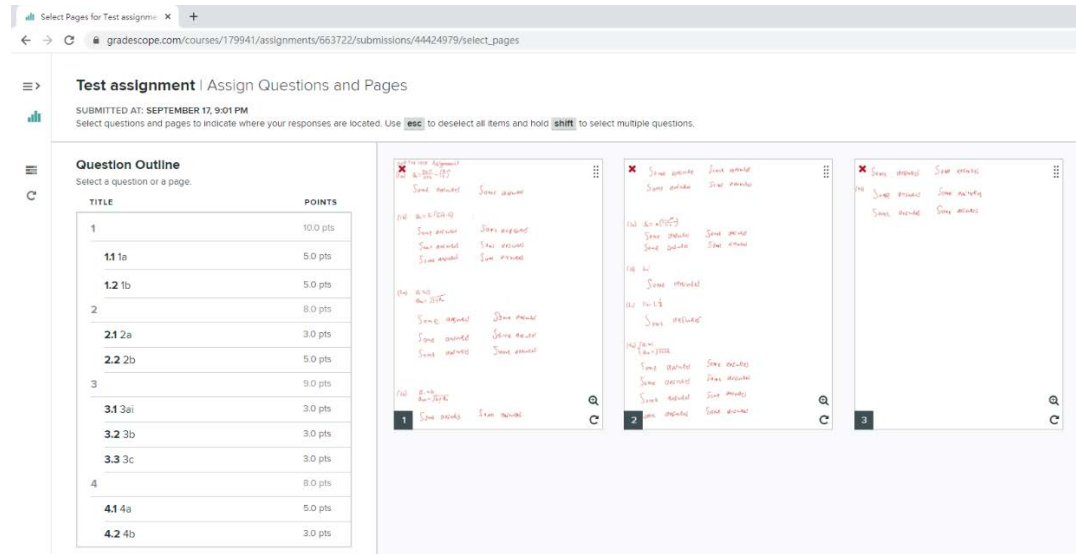
1. Select the homework in the respective course. Here it is named “Test assignment”.



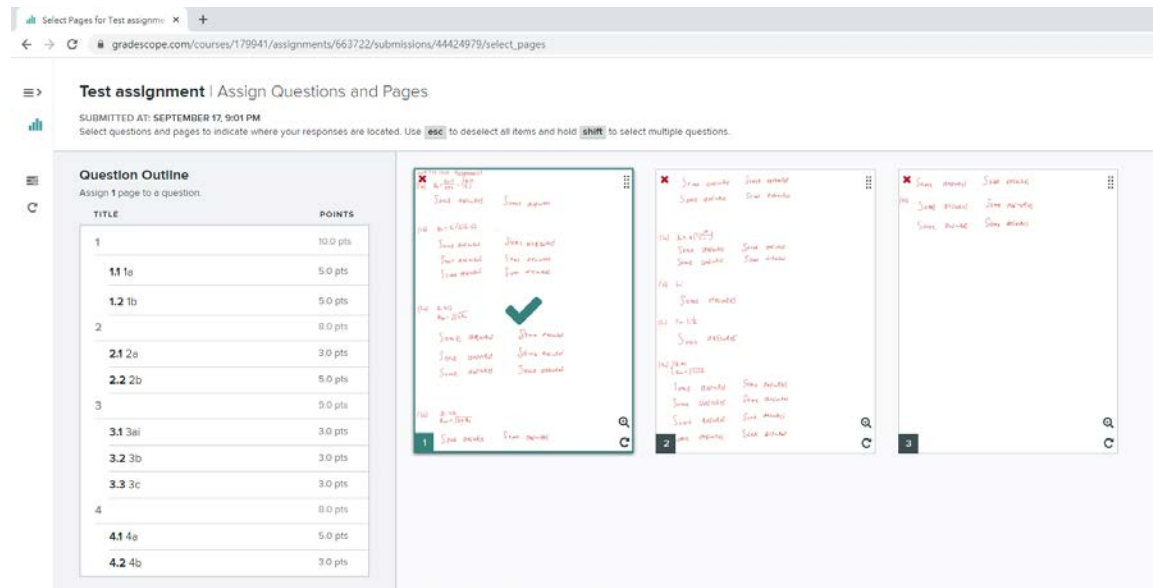
2. Select “Submit PDF”. You must submit your whole assignment in a single PDF (Portable Document Format) in Gradescope, especially if there are many questions in the assignment. To ensure all your work is graded, please do not upload your assignment in a page-by-page manner as that will increase the likelihood of some pages being overlooked!



3. You should see a page like this, which shows your submission of every page.



4. Select a page, and you will see a tick on the page.



5. Hold shift to select the questions from the left that are contained on the page you selected.

Test assignment | Assign Questions and Pages

SUBMITTED AT: SEPTEMBER 17, 9:01 PM
 Select questions and pages to indicate where your responses are located. Use **esc** to deselect all items and hold **shift** to select multiple questions.

Question Outline

Select pages to assign to Questions 1.2, 2.1, and 2.2.

TITLE	POINTS
1	10.0 pts
1.1 1a P1 x	5.0 pts
1.2 1b P1 x	5.0 pts
2	8.0 pts
2.1 2a P1 x	3.0 pts
2.2 2b P1 x	5.0 pts
3	9.0 pts
3.1 3ai	3.0 pts
3.2 3b	3.0 pts
3.3 3c	3.0 pts
4	8.0 pts
4.1 4a	5.0 pts
4.2 4b	3.0 pts

Handwritten notes on page 1:

- 1.1 $a = \frac{1}{2}(1+4)$
- 1.2 $a = \frac{1}{2}(1+4)$
- 2.1 $a = \frac{1}{2}(1+4)$
- 2.2 $a = \frac{1}{2}(1+4)$

Other notes include "Some answers" and "Sum answers". A green checkmark is visible next to the 2.1 calculation.

Handwritten notes on page 2:

- 1.1 $a = \frac{1}{2}(1+4)$
- 1.2 $a = \frac{1}{2}(1+4)$
- 2.1 $a = \frac{1}{2}(1+4)$
- 2.2 $a = \frac{1}{2}(1+4)$

Other notes include "Some answers" and "Sum answers".

Handwritten notes on page 3:

- 1.1 $a = \frac{1}{2}(1+4)$
- 1.2 $a = \frac{1}{2}(1+4)$
- 2.1 $a = \frac{1}{2}(1+4)$
- 2.2 $a = \frac{1}{2}(1+4)$

Other notes include "Some answers" and "Sum answers".

6. Press Esc to deselect, and select another page, and then select the questions on that page. Repeat until all questions and pages are selected. Note that you can select more than one page for a question.

The screenshot displays the Gradescope interface for a test assignment. On the left, a table lists questions and their associated pages:

TITLE	POINTS
1	10.0 pts
1.1 1a	5.0 pts
1.2 1b	5.0 pts
2	8.0 pts
2.1 2a	3.0 pts
2.2 2b	5.0 pts
3	9.0 pts
3.1 3a	3.0 pts
3.2 3b	3.0 pts
3.3 3c	3.0 pts
4	8.0 pts
4.1 4a	5.0 pts
4.2 4b	3.0 pts

On the right, three handwritten pages of work are shown. The first page is for question 1, the second for question 2, and the third for question 3. A green checkmark is visible on the third page. At the bottom right, a 'Submit' button is circled in red.

7. Submit your work with the bottom right “Submit” button