

Student Signup Guide

Step 1

Go to: <https://www.awseducate.com/Registration> Choose "Student" as your role and click "Next"

Step 2

Enter your information into the fields. **Click** the **i** icons on the right for more detailed information. **Enter** your country of residence, your first name and your last name (surname). **Enter** your institution (school) issued email address: e.g. Student@amazonu.edu.

If you do not have an institution issued email address, additional verification may be required. You will receive further instructions in your email.

Enter your birth month and year, your institution name, your expected graduation, or program completion date. If you have a valid promo code* you can apply it in the bottom field. After completing the CAPTCHA, **click** "Next".



*AWS Educate is available to students and educators at no cost, even without a promo code.



Step 3

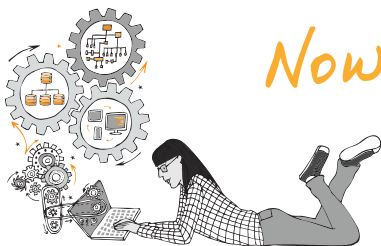
Please review AWS Educate's Terms and Conditions. Selecting "Agree" allows you to proceed.

Step 4

Check your email to follow the automated email verification process.

Step 5

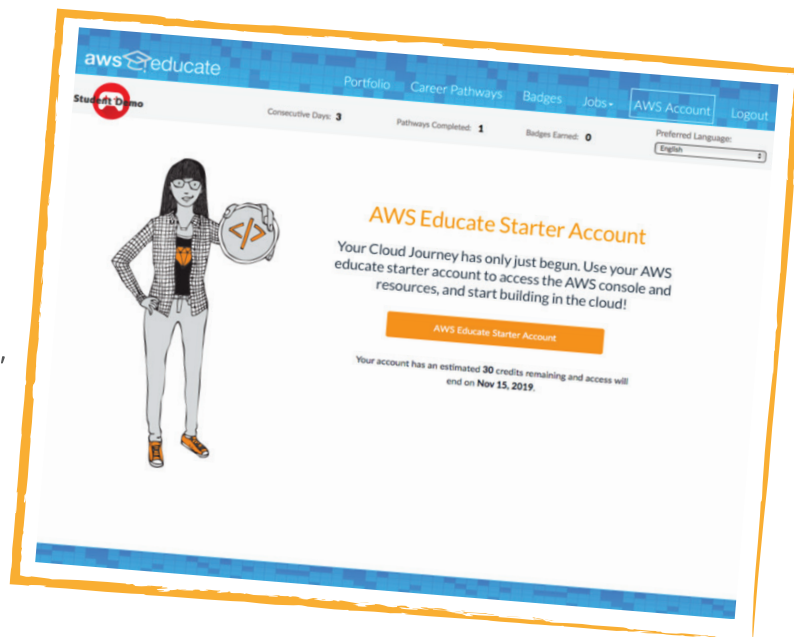
After email verification, you will be prompted to set a password to log into the student portal. Make sure your password meets the required security level.



Now you're able to log in!

+ **AWS Educate Starter Account**
 The AWS Educate Starter Account (ESA) offers you free access to AWS cloud resources without requiring a credit card for payment. With an ESA, you will receive \$100 in preloaded credits at member institutions, or \$30 in preloaded credits at non-member institutions.

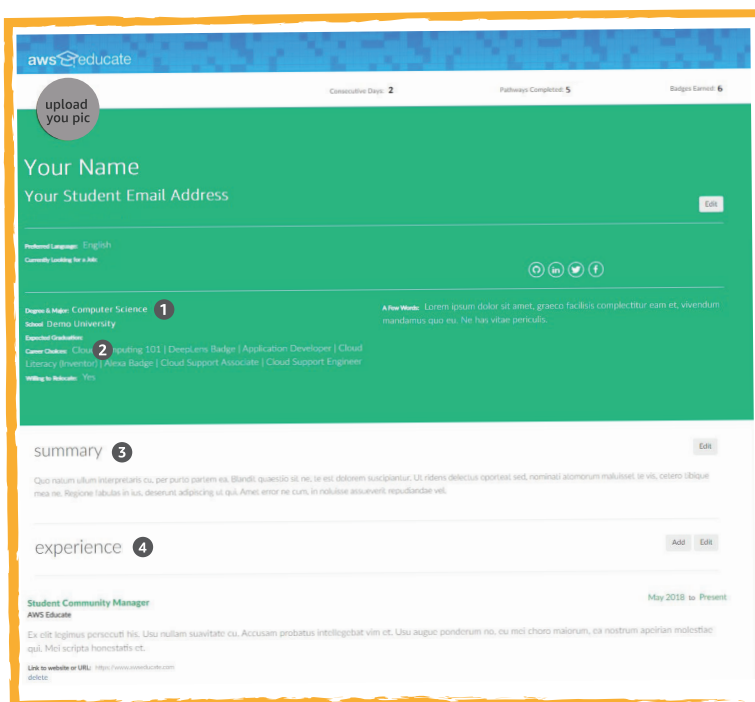
Your AWS Educate Starter Account will renew on an annual basis as long as you are an active student and a member of AWS Educate.



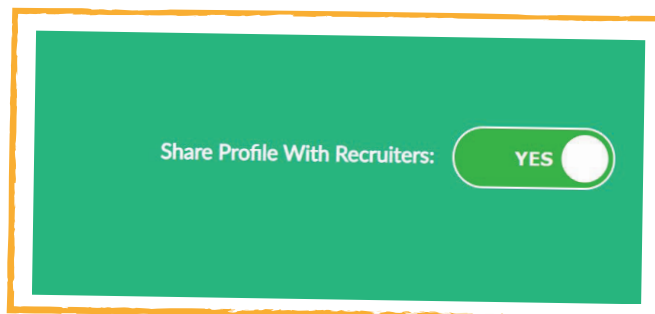
+ **For students over 18, make sure you complete your profile!**
 To complete your profile, select "Portfolio" in the upper navigation, and fill out the areas below by tapping the "edit" button next to each field.

- 1. Degree or Major:** A separate entry will appear after selecting the "edit" button for each "Degree" and "Major." Fill them both out.
- 2. Career choice:** This will autofill with the Cloud Career Pathway you've enrolled in.
- 3. Summary:** Fill in a description of your career goals, your professional passions, and/or interesting school projects. Get creative!
- 4. Experience:** Fill in at least one entry with "Title and Company" included.

Make sure you save each section after filling out your information.



+ **Want to maximize your opportunity to find a cloud job?**
 As an optional step, turn on the "Share Profile with Recruiters" button in the upper right side of the profile box.



Account credit is automatically added to your AWS Educate Starter Account once every 12 months from the date your application is approved until your graduation/ program completion date.