



## Self-Service Printing Configuration for Windows 7/8/10 - Fuji Xerox

In Windows, the default settings of Pi Chiu – Self-Service Print Station 2 are: Black & White, Duplex and A4 size. Users can further change the settings.

(Illustrated in 64-bit Windows and similar screens could be applied to 32-bit OS)

### Suitable for:

- printer Pi Chiu - Self-Service Print Station 2
- printer WMYLC - Self-Service Print Station 1
- printer WMYLC - Self-Service Print Station 2

### Windows 7

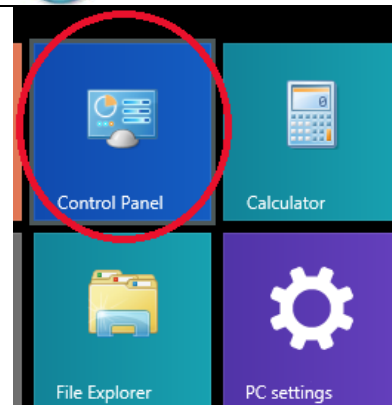
Start at bottom right hand

Select Control Panel → Hardware and Sound  
→ Devices and Printers



### Windows 8

Open “Control Panel” and select “View devices and printers”.





### Network and Internet

View network status and tasks  
Choose homegroup and sharing options



### Hardware and Sound

View devices and printers  
Add a device  
Adjust commonly used mobility settings

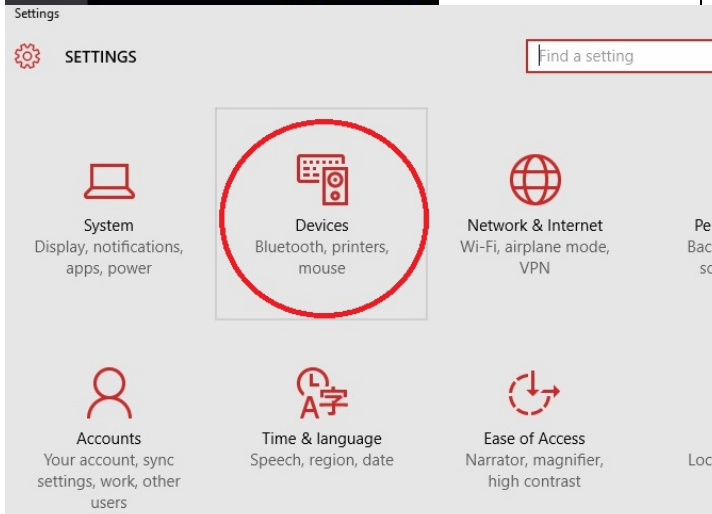


### Programs

Uninstall a program

## Windows 10

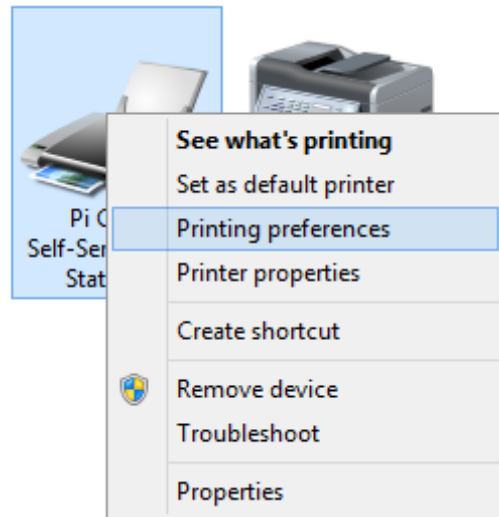
Open “Settings” and select “Devices”.



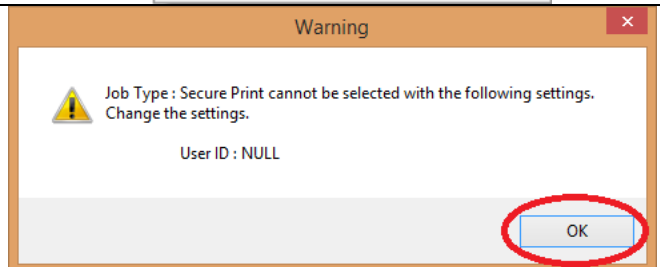
## 2/. Setup Printing Preferences for Fuji Xerox

Right click the printer you would like to use:  
“Pi Chiu – Self-Service Print Station 2”  
“WMY LC – Self-Service Print Station 1”  
“ WMY LC – Self-Service Print Station 2”

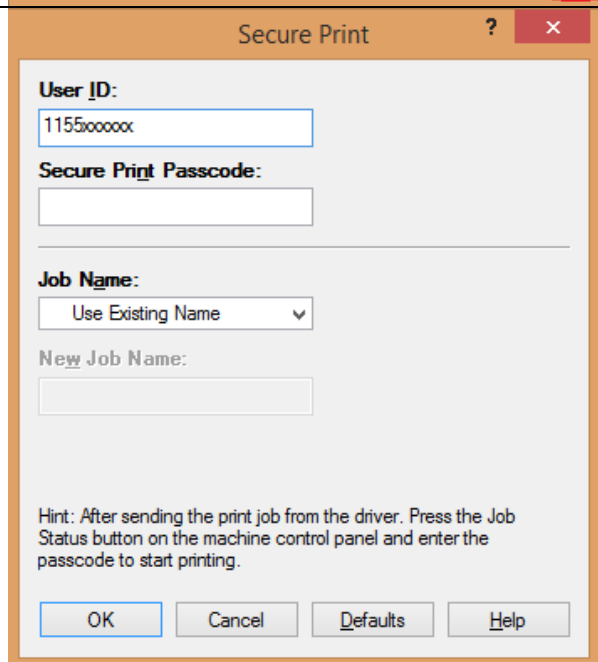
Then select “**Printing Preferences**”.



1. A dialog box will pop up. Click “**OK**”.



2. Type your “**User ID**” and “**Secure Print Passcode**”  
(Only number is accepted).



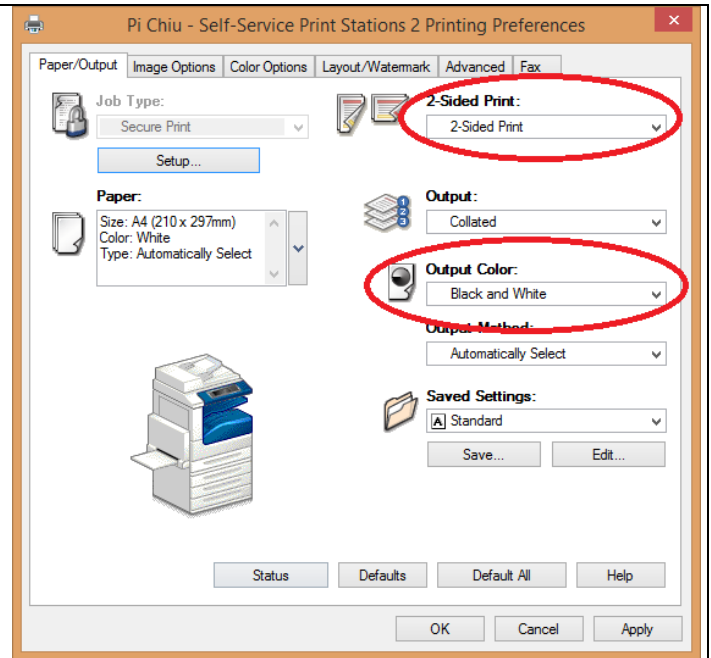
3. Follow the steps and change the settings.

**Default Settings:**

**2 Sided Print: 2 Sided Print**

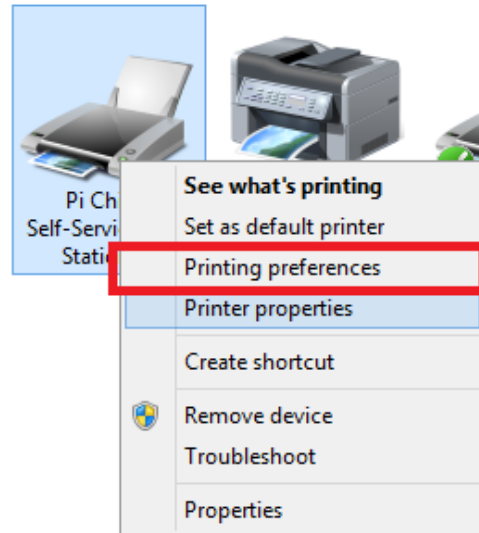
**Output Color: Black and White**

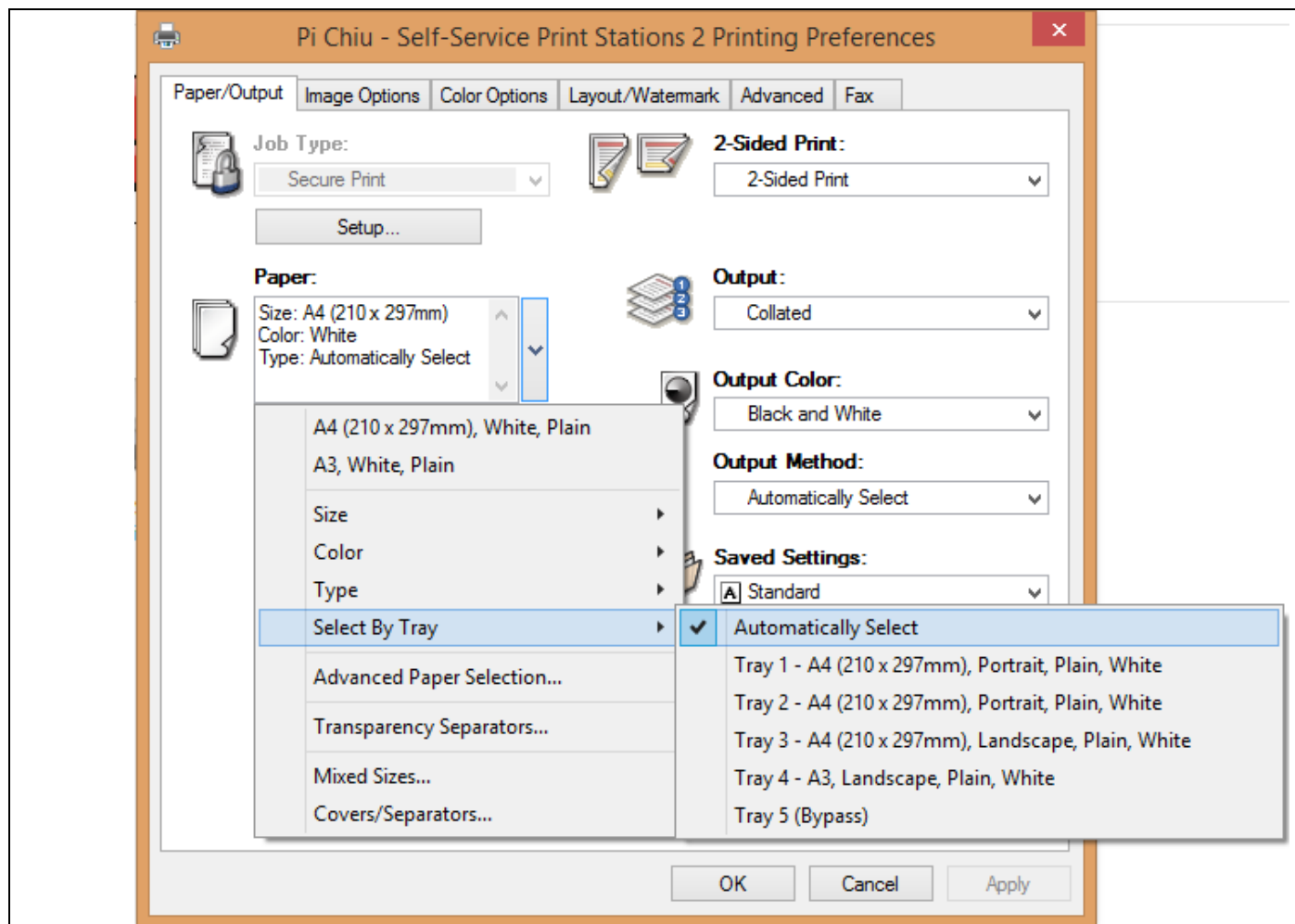
Click “**OK**” if you have configured the printer settings.



**3/. Finish setting:**

You may view tray information under “**Printing Preferences**” now.





**Prepared by: User Support Division, Information Technology Services Centre**

**Last Update: December 2015**

**Copyright © 2015. All Rights Reserved.**

**Information Technology Services Centre, The Chinese University of Hong Kong**