



Institute of Space and Earth Information Science
The Chinese University of Hong Kong
香港中文大學太空與地球信息科學研究所



目錄

Content

Introduction 簡介

- 2 - 太空與地球信息科學研究所
ISEIS
- 4 - 研究所之架構
Organization Chart

People 人員

- 6 - 管理委員會
Management Board
- 8 - 學術委員會
Academic Committee
- 10 - 所長及執行委員
Directors and Executive Committee
- 11 - 研究人員
Research Fellows

Milestone 里程碑

- 16 - 地球信息科學聯合實驗室
Joint Laboratory for GeoInformation Science
- 18 - 國家遙感中心香港研究開發與培訓基地
National Remote Sensing Centre of China
Hong Kong Base for Research Development and Training
- 19 - 聯合國亞太經社區域遙感工作組香港聯絡處
United Nations Economic and Social Commission for Asia
and the Pacific Contact Point of Regional Working Group on
Remote Sensing, GIS and Satellite-based Positioning
- 20 - 圓玄衛星遙感研究中心
The Yuen Yuen Research Centre for Satellite Remote Sensing
- 21 - 衛星遙感地面接收站
The Satellite Remote Sensing Ground Receiving Station
- 22 - 中國城市住宅研究中心
Center of Housing Innovations

Achievements 成果

- 24 - 研究動態
Research Development
- 26 - 培訓與教育
Education & Training
- 28 - 學術交流
Academic Exchange
- 30 - 合作伙伴
Collaboration & Partnership
- 32 - 服務社會
Serving the Community in HKSAR
- 34 - 推廣地球信息科技
Promoting GeoInformation Science & Technology

Contact 聯絡

- 36 - 聯絡
Contact

簡介

Introduction



國家科技部徐冠華部長聯同中國科學院及中國工程院共9位院士於2005年10月5日主持衛星遙感地面接收站第一期工程落成慶典及太空與地球信息科學研究所的成立典禮
Minister Guanhua Xu of The Ministry of Sciences and Technology of P. R. China and 9 academicians from Chinese Academy of Sciences and Chinese Academy of Engineering officiated the Inauguration of the First Phase of the Satellite Remote Sensing Ground Receiving Station and the Institute of Space and Earth Information Science on 5th October 2005



香港中文大學校長劉遵義教授（右）致送紀念品給國家科技部徐冠華部長（左）
Souvenir Presentation by Professor Lawrence Lau (right), Vice Chancellor of CUHK, to Minister Xu Guanhua of The Ministry of Science and Technology of P.R. China



霍英東基金會捐贈四千萬元給予研究所，以支持興建中文大學衛星遙感地面接收站第二期工程
Fok Ying Tung Foundation has made generous donation of HK\$40 millions in support of the construction of 2nd Phase of Satellite Remote Sensing Ground Receiving Station of The Chinese University of Hong Kong

太空與地球信息科學研究所於二零零五年成立，其基礎為中國科學院暨香港中文大學地球信息科學聯合實驗室。研究所主要是由研究、教育培訓及技術開發三部分所組成。

太空與地球信息科學研究所的三大目標

1. 成為中國熱帶及亞熱帶遙感中心，從事多雲多雨地區的遙感研究，並推動虛擬地理環境研究。同時，以地球信息科學技術為橋樑，將人文社會科學和自然科學結合起來，為建設以人為本的信息社會服務。
2. 成為海峽兩岸城市地理信息系統學術交流中心，將政府、大學和專家學者結合起來，為建設有中國文化特色的城市規劃與管理信息系統服務。
3. 善用香港的國際化環境，建設太空與地球信息科學國際交流與合作中心。

主要研究範疇

1. 多雲多雨地區遙感
2. 虛擬地理環境
3. 災害與突發事件監測和管理
4. 城市與城市群地理信息系統
5. 城市人居環境分析與模擬
6. 公共健康地理信息系統
7. 智能交通系統
8. 空間綜合人文學與社會科學

研究所更設立地球信息科學研究生學部，招收碩士與博士研究生，並開設太空與地球信息科學碩士課程及相關的證書等課程。研究所擁有高、中解析度遙感衛星地面接收站，為對地觀測研究人員與學生培養提供了獨特的平台。

Institute of Space and Earth Information Science (ISEIS) was established in 2005. It was developed on the base of the Joint Laboratory for GeoInformation Science (JLGIS) of Chinese Academy of Sciences & The Chinese University of Hong Kong. ISEIS consists of three components: research, education and training, and technology development.

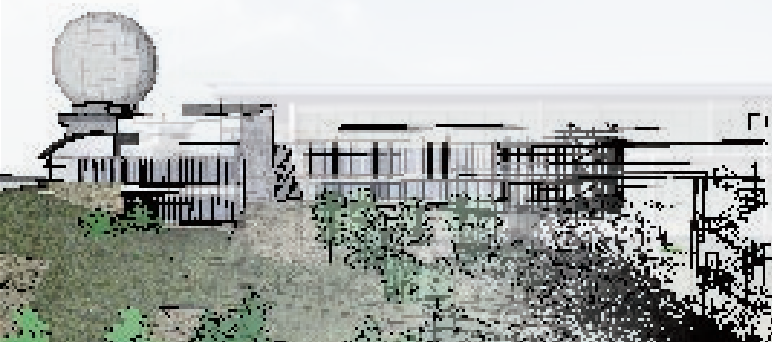
The major objectives of ISEIS

1. To be a remote sensing centre in the tropical and sub-tropical region in conducting and promoting various researches, including cloud-prone and rainy areas remote sensing (CARRS) and virtual geographic environments (VGE). Built upon Earth Information Science and Technology, interdisciplinary research and applications of social and natural science can be promoted to serve the needs of human society.
2. To be the academic exchange centre of GeoInformation Science at the both sides of the Taiwan Strait in order to provide services with national culture characteristics for urban planning and management information system by collaborating with governments, universities and experts.
3. To be the International Exchange and Cooperation Centre of GeoInformation Science in Hong Kong.

Main Research Areas

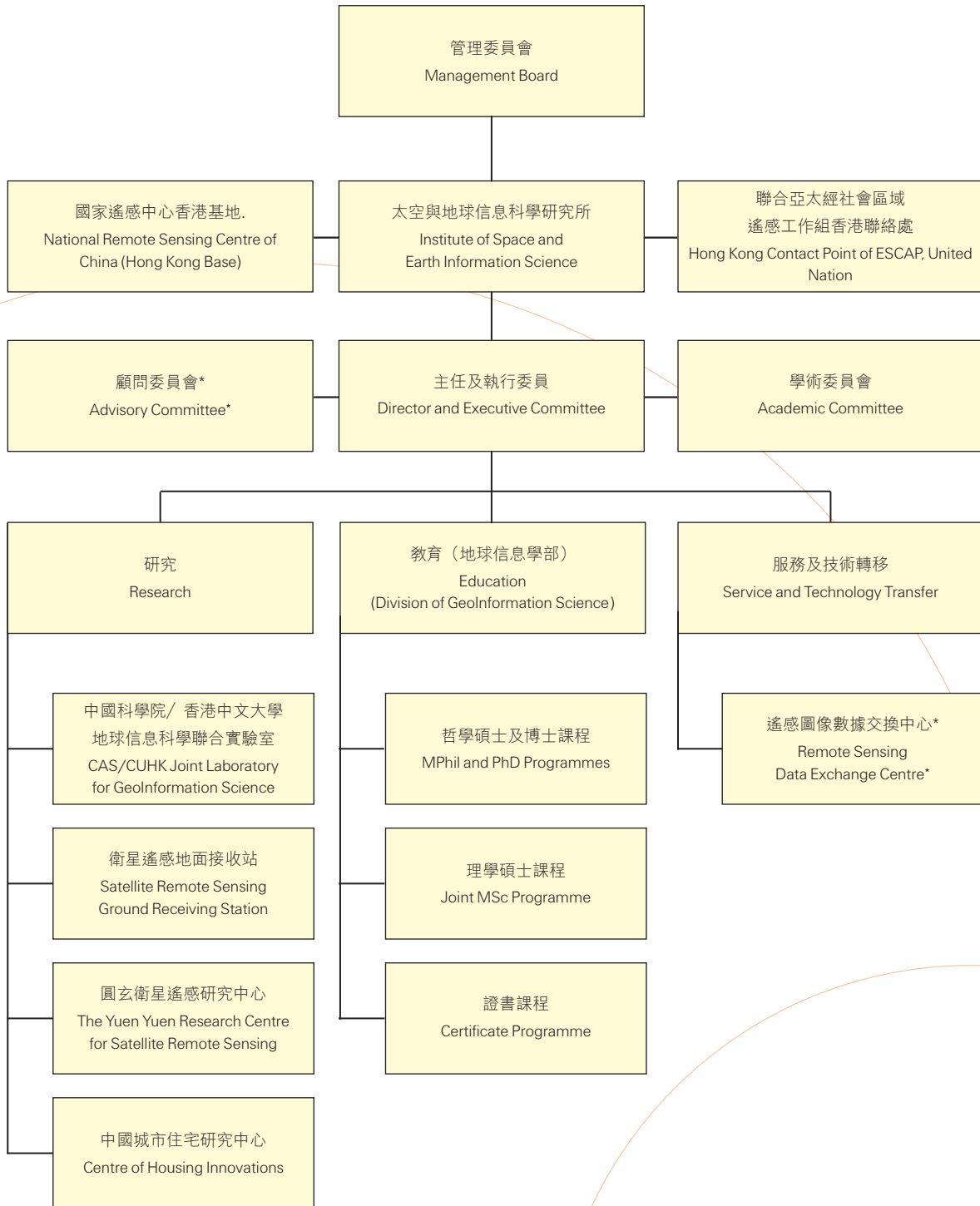
1. Cloud-prone and rainy areas remote sensing (CARRS)
2. Virtual geographic environments (VGE)
3. Emergency response and natural disaster monitoring and management
4. Urban and metropolitan GIS
5. Analysis and modeling of the urban settlement environment
6. Public health and geographic information systems
7. Intelligent transport system (ITS)
8. Spatially integrated humanities and social science

The Division of GeoInformation Science was formed under the Institute so as to offer the M.Phil and Ph.D. programmes, the taught M.Sc. programme and related certificate programmes. The institute is equipped with a middle-high resolution satellite remote sensing ground receiving station, which provides a unique opportunity to researchers and students for carrying out earth observation related programs.

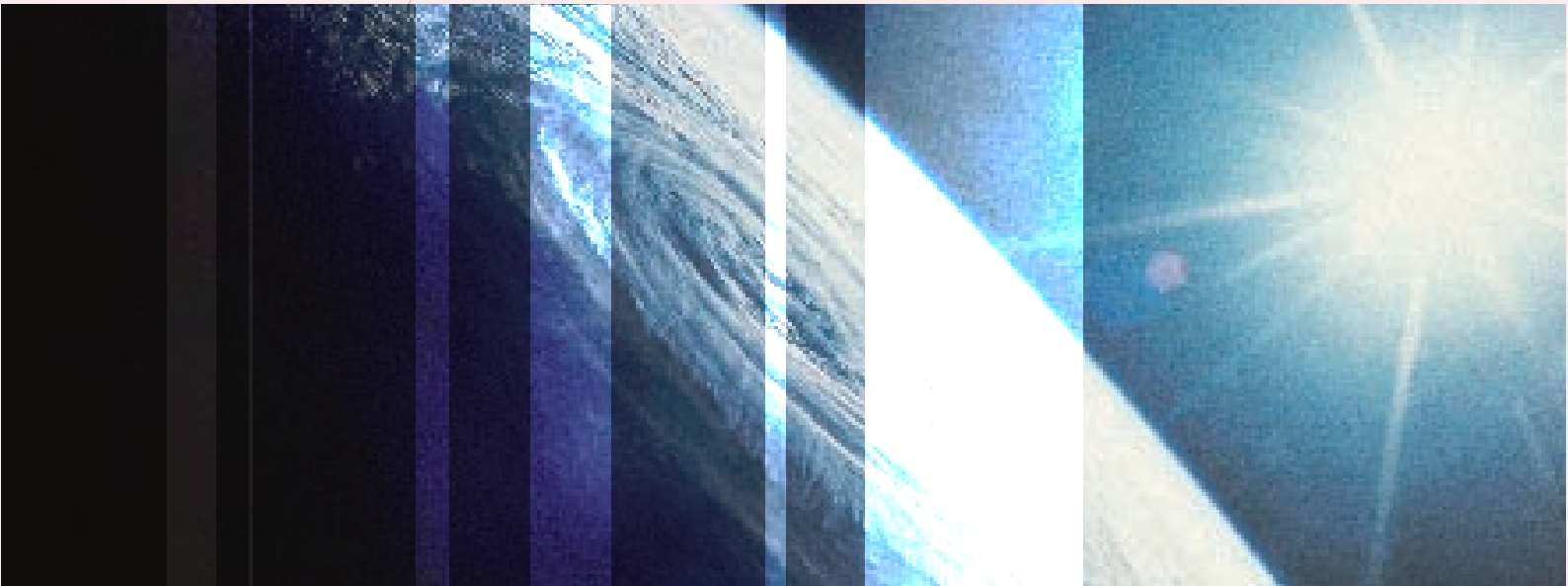


研究所之架構

Organization Chart



* 即將成立 to be established



P E O P L E
人 員

管理委員會
Management Board

學術委員會
Academic Committee

所長及執行委員
Directors and Executive Committee

研究人員
Research Fellows

管理委員會

Management Board

主席 Chairman



楊綱凱教授
香港中文大學副校長
Professor Kenneth YOUNG
Pro-Vice Chancellor
The Chinese University of Hong Kong

委員 Members

黃乃正教授
香港中文大學研究委員會主席
Professor Henry N.C. WONG
Chairman, Research Committee
The Chinese University of Hong Kong



林暉教授
香港中文大學太空與地球信息科學研究所所長
Professor Hui LIN
Director, Institute of Space and Earth Information Science
The Chinese University of Hong Kong

吳奇教授
香港中文大學理工研究所主任
Professor Chi WU
Director, Institute of Science and Technology
The Chinese University of Hong Kong





■ 任德盛教授

香港中文大學工程學院院長

Professor Peter T.S. YUM

Dean, Faculty of Engineering
The Chinese University of Hong Kong

李少南教授
香港中文大學社會科學院院長

Professor Paul LEE

Dean, Faculty of Social Science
The Chinese University of Hong Kong



■ 黃永成教授

香港中文大學研究院院長

Professor Wingshing WONG

Dean, Graduate School
The Chinese University of Hong Kong

秘書

Secretary

鄒經宇教授
香港中文大學建築學系

Professor Jinyeu TSOU

Department of Architecture
The Chinese University of Hong Kong



學術委員會

Academic Committee

主席

陳述彭 (中國科學院院士)
中國科學院地理科學與資源研究所



副主席

梁怡教授
香港中文大學地理與資源管理學系



黃永成教授
香港中文大學訊息工程學系



委員

巢紀平教授 (中國科學院院士)
中國國家海洋環境預報研究中心

陳俊勇教授 (中國科學院院士)
中國國家測繪局

龔惠興教授 (中國工程院院士)
中國科學院上海技術物理研究所

郭寶柱教授
中國航太科技集團

郭華東教授
中國科學院遙感應用研究所

姜景山教授 (中國科學院院士)
中國科學院空間科學與應用研究中心

李德仁教授 (中國科學院院士和中國工程院院士)
中國武漢大學測繪遙感信息工程國家重點實驗室

劉經南教授 (中國工程院院士)
中國武漢大學

劉紀遠教授
中國科學院地理科學與資源研究所

歐陽自遠教授 (中國科學院院士)
中國科學院地球化學研究所

孫鴻烈教授 (中國科學院院士)
中國科學院地理科學與資源研究所

孫家棟教授 (中國科學院院士)
中國航太科技集團

孫樞教授 (中國科學院院士)
中國科學院地質與地球物理研究所

童慶禧教授 (中國科學院院士)
中國科學院遙感應用研究所

周成虎教授
中國科學院地理科學與資源研究所

周秀驥教授 (中國科學院院士)
中國氣象科學研究院

邁克爾巴蒂教授 (英國科學院院士)
英國倫敦大學空間分析研究中心

邁克爾歌德喬爾德教授 (美國國家科學院院士)
美國國家地理信息與分析中心

伏拉基米爾吉洪諾夫教授
俄羅斯國立莫斯科大學

秘書

林瑋教授
香港中文大學太空與地球信息科學研究所

Director

Shupeng CHEN
(Academician of Chinese Academy of Sciences)
Institute of Geographical Sciences and Natural Resources Research,
Chinese Academy of Sciences

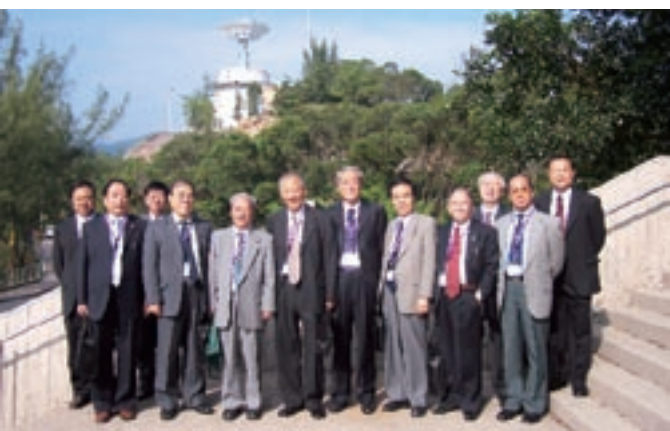
Deputy Director

Professor Yee LEUNG
Department of Geography & Resource Management,
The Chinese University of Hong Kong

Professor Wingshing WONG
Department of Information Engineering,
The Chinese University of Hong Kong



研究所學術委員會第一次會議
The First Meeting of Academic Committee of ISEIS



學術委員會部分成員於2005年10月4日來港參觀研究所之衛星遙感地面接收站
Members of Academic Committee visited the Satellite Remote Sensing Ground Receiving Station on 4th October 2005

Member

Professor Jiping CHAO (Academician of Chinese Academy of Sciences)
State Research Centre for Oceanic Environment Forecasting, China

Professor Junyong CHEN (Academician of Chinese Academy of Sciences)
State Bureau of Surveying & Mapping, China

Professor Huixing GONG (Academician of Chinese Academy of Engineering)
Shanghai Institute of Technical Physics, Chinese Academy of Sciences

Professor Baozhu GUO
China Aerospace Science and Technology Corporation

Professor Huadong GUO
Institute of Remote Sensing Applications, Chinese Academy of Sciences

Professor Jingshan JIANG (Academician of Chinese Academy of Sciences)
Centre for Space Science and Applied Research, Chinese Academy of Sciences

Professor Deren LI
(Academician of Chinese Academy of Sciences and Chinese Academy of Engineering)
State Key Laboratory for Information Engineering in Surveying
Mapping and Remote Sensing, Wuhan University

Professor Jingnan LIU (Academician of Chinese Academy of Engineering)
Wuhan University, China

Professor Jiyuan LIU
Institute of Geographical Sciences and Natural Resources Research,
Chinese Academy of Sciences

Professor Ziyuan OUYANG (Academician of Chinese Academy of Sciences)
Institute of Geo-chemistry, Chinese Academy of Sciences

Professor Honglie SUN (Academician of Chinese Academy of Sciences)
Institute of Geographical Sciences and Natural Resources Research,
Chinese Academy of Sciences

Professor Jiadong SUN (Academician of Chinese Academy of Sciences)
China Aerospace Science and Technology Corporation

Professor Shu SUN (Academician of Chinese Academy of Sciences)
Institute of Geology and Geophysics, Chinese Academy of Sciences

Professor Qingxi TONG (Academician of Chinese Academy of Sciences)
Institute of Remote Sensing Applications, Chinese Academy of Sciences

Professor Chenghu ZHOU
Institute of Geographical Sciences and Natural Resources Research,
Chinese Academy of Sciences

Professor Xiuji ZHOU (Academician of Chinese Academy of Sciences)
Chinese Academy of Meteorology

Professor Michael BATTY (Fellow of the British Academy)
The Center for Advanced Spatial Analysis,
University College London, United Kingdom

Professor Michael GOODCHILD (Member of the US National Academy of Sciences)
National Centre for Geographic Information and Analysis, USA

Professor Vladimir S. TIKUNOV
Moscow State University, Russia

Secretary

Professor Hui LIN
Institute of Space and Earth Information Science,
The Chinese University of Hong Kong

所長及執行委員

Directors and Executive Committee



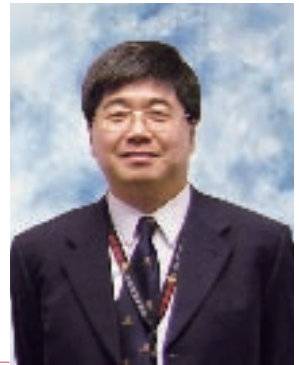
所長 Director

林琿教授
香港中文大學
地理與資源管理學系
地球信息科學聯合實驗室主任

Professor Hui LIN
Department of Geography and Resource Management
Director, Joint Laboratory for GeoInformation Science
The Chinese University of Hong Kong

副所長 Associate Director

鄒經宇教授
香港中文大學建築學系
中國城市住宅研究中心主任
Professor Jinyeu TSOU
Department of Architecture
Director, Centre for Housing Innovations
The Chinese University of Hong Kong



執行委員會 Executive Committee

林琿教授
香港中文大學
地理與資源管理學系
地球信息科學聯合實驗室主任

Professor Hui LIN
Department of Geography and Resource Management
Director, Joint Laboratory for GeoInformation Science
The Chinese University of Hong Kong

鄒經宇教授
香港中文大學
建築學系
中國城市住宅研究中心主任

Professor Jinyeu TSOU
Department of Architecture
Director, Centre for Housing Innovations
The Chinese University of Hong Kong



徐揚生教授
香港中文大學
自動化與計算機輔助工程學系
現代機器人實驗室主任

Professor Yangsheng XU
Department of Automation and Computer-Aided Engineering
Director, Advanced Robotics Laboratory
The Chinese University of Hong Kong

研究人員

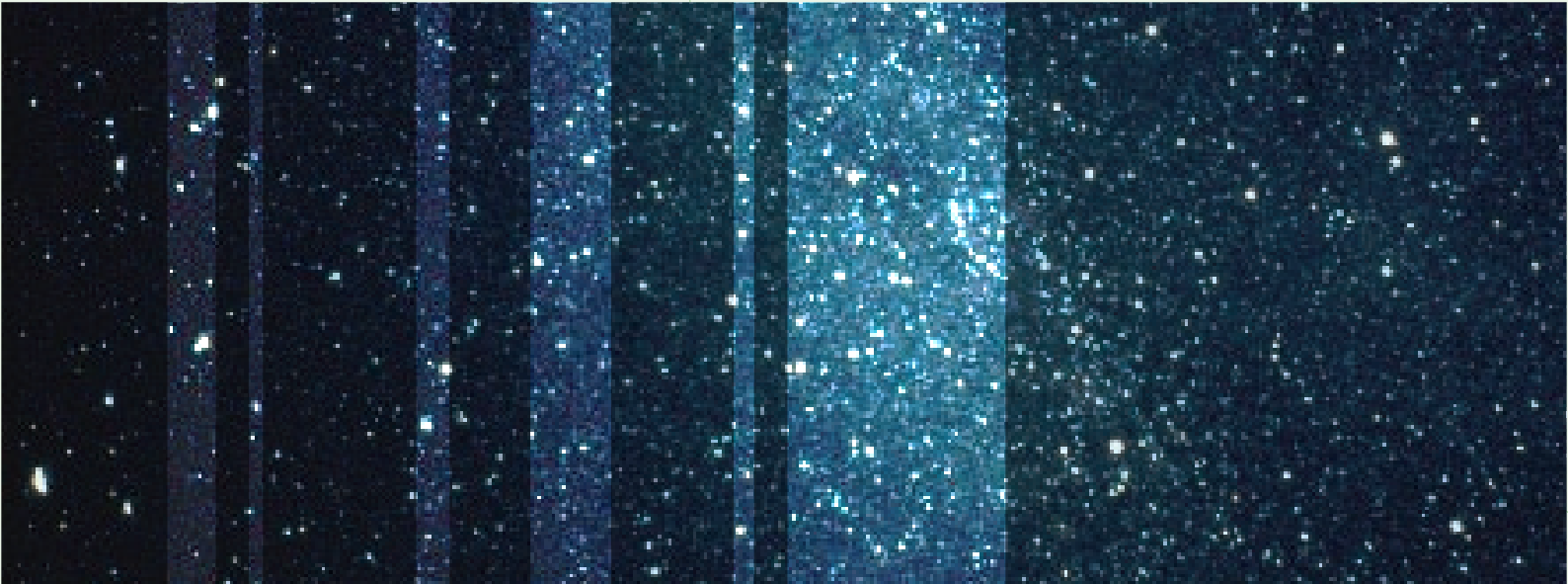
Research Fellows

姓名 Name	學系 Organization
陳戈教授 Professor Ge CHEN	中國青島海洋大學海洋遙感研究所 Ocean Remote Sensing Institute, Qingdao Ocean University, China
陳永勤教授 Professor David Y. Q. CHEN	香港中文大學地理與資源管理學系 Department of Geography & Resource Management, The Chinese University of Hong Kong, HKSAR, China
陳子坦教授 Professor Zitan CHEN	美國環境系統研究院 ESRI, USA
鄭玉臣教授 Professor Andrew Y. S. CHENG	香港城市大學物理及材料科學系 Department of Physics & Materials Science, City University of Hong Kong, HKSAR, China
克拉若蒙特教授 Professor Christophe CLARAMUNT	法國海軍學院研究所 Naval Academy Research Institute, France
狄歷平教授 Professor Liping DI	美國喬治梅森大學高級信息技術及標準實驗室 Laboratory for Advanced Information Technology & Standard (LAITS), George Mason University, USA
丁曉利教授 Professor Xiaoli DING	香港理工大學土地測量及地理資訊學系 Department of Land Surveying & Geo-Informatics, The Hong Kong Polytechnic University, HKSAR, China
傅慰慈教授 Professor Ada FU	香港中文大學計算機科學與工程學系 Department of Computer Science & Engineering, The Chinese University of Hong Kong, HKSAR, China
馮通教授 Professor Tung FUNG	香港中文大學地理與資源管理學系 Department of Geography & Resource Management, The Chinese University of Hong Kong, HKSAR, China
葛林林教授 Professor Linlin GE	澳洲新南威爾斯大學測量與空間信息學院 School of Surveying & Spatial Information Systems, The University of New South Wales, Australia
龔建華教授 Professor Jianhua GONG	中國科學院遙感應用研究所 Institute of Remote Sensing Applications, Chinese Academy of Sciences, China
龔健雅教授 Professor JianYa GONG	中國武漢大學測繪遙感信息工程國家重點實驗室 State Key Laboratory for Information Engineering in Surveying, Mapping & Remote Sensing (LMARS), Wuhan University, China
宮鵬教授 Professor Peng GONG	美國加州大學柏克萊分校地理信息科學研究中心 Geographic Information Science Centre, US Berkeley, USA
顧行發博士 Professor Xingfa GU	中國科學院遙感應用研究所 Institute of Remote Sensing Applications, Chinese Academy of Sciences, China

姓名 Name	學系 Organization
郭華東教授 Professor Huadong GUO	中國科學院遙感應用研究所 Institute of Remote Sensing Applications, Chinese Academy of Sciences, China
郭繼明教授 Professor Jiming GUO	中國武漢大學測繪遙感信息工程國家重點實驗室 State Key Laboratory for Information Engineering in Surveying, Mapping & Remote Sensing (LMARS), Wuhan University, China
過仲陽教授 Professor Zhongyang GUO	華東師範大學資源與環境科學學院 School of Resources & Environment Science, East China Normal University, China
黃波教授 Professor Bo HUANG	香港中文大學地理與資源管理學系 Department of Geography & Resource Management, The Chinese University of Hong Kong, HKSAR, China
黃簽教授 Professor Qian HUANG	中國國家衛星氣象中心 National Satellite Meteorology Center, China
孔云峰教授 Professor Yunfeng KONG	中國河南大學環境與規劃學院 College of Environment & Planning, Henan University, China
關子尹教授 Professor Tzewan KWAN	香港中文大學哲學系 Department of Philosophy, The Chinese University of Hong Kong, HKSAR, China
賴寶珍教授 Professor Pohchin LAI	香港大學地理系 Department of Geography, The University of Hong Kong, HKSAR, China
林智中教授 Professor Chichung LAM	香港中文大學課程與教學學系 Department of Curriculum & Instruction, The Chinese University of Hong Kong, HKSAR, China
林啟沛教授 Professor Kaipui LAM	香港中文大學系統工程與工程管理學系 Department of Systems Engineering & Engineering Management, The Chinese University of Hong Kong, HKSAR, China
梁廣錫教授 Professor Kwongsak LEUNG	香港中文大學計算機科學與工程學系 Department of Computer Science & Engineering, The Chinese University of Hong Kong, HKSAR, China
梁怡教授 Professor Yee LEUNG	香港中文大學地理與資源管理學系 Department of Geography & Resource Management, The Chinese University of Hong Kong, HKSAR, China
李端教授 Professor Duan LI	香港中文大學系統工程與工程管理學系 Department of Systems Engineering & Engineering Management, The Chinese University of Hong Kong, HKSAR, China
李京教授 Professor Jing LI	中國北京師範大學資源學院 College of Resource Science & Technology, Beijing Normal University, China
李琦教授 Professor Qi LI	中國北京大學遙感與地理信息系統研究所 Institute of Remote Sensing & GIS, Peking University, China
李榮興教授 Professor Rongxing LI	美國俄亥俄州立大學土木、環境工程與大地測量科學系 Department of Civil & Environmental Engineering & Geodetic Science, The Ohio State University, USA

姓名 Name	學系 Organization
連石柱教授 Professor Shizhu LIAN	中國科學院遙感應用研究所 Institute of Remote Sensing Applications, Chinese Academy of Sciences, China
廖明生教授 Professor Mingsheng LIAO	中國武漢大學測繪遙感信息工程國家重點實驗室 State Key Laboratory for Information Engineering in Surveying, Mapping & Remote Sensing (LMARS), Wuhan University, China
劉紹強教授 Professor Soungchang LIEW	香港中文大學訊息工程學系 Department of Information Engineering, The Chinese University of Hong Kong, HKSAR, China
林瑋教授 Professor Hui LIN	香港中文大學地理與資源管理學系 Department of Geography & Resource Management, The Chinese University of Hong Kong, HKSAR, China
閻國年教授 Professor Guonian LU	中國南京師範大學地理科學學院 Department of Geography, Nanjing Normal University, China
呂榮聰教授 Professor Rungtsong LYU	香港中文大學計算機科學與工程學系 Department of Computer Science & Engineering, The Chinese University of Hong Kong, HKSAR, China
馬忠東教授 Professor Zhongdong MA	香港科技大學社會科學部 Faculty of Social Science, The Hong Kong University of Science & Technology, HKSAR, China
馬路華教授 Professor Lawal Mohammed MARAFA	香港中文大學地理與資源管理學系 Department of Geography & Resource Management, The Chinese University of Hong Kong, HKSAR, China
伍鳳儀教授 Professor Linda F. Y. NG	香港中文大學決策科學與企業經濟學系 Department of Decision Science & Managerial Economics, The Chinese University of Hong Kong, HKSAR, China
伍世良教授 Professor Saileung NG	香港中文大學地理與資源管理學系 Department of Geography & Resource Management, The Chinese University of Hong Kong, HKSAR, China
邵芸教授 Professor Yun SHAO	中國科學院遙感應用研究所 Institute of Remote Sensing Applications, Chinese Academy of Sciences, China
肅世倫教授 Professor Shihlung SHAW	美國田納西州大學地理系 Department of Geography, The University of Tennessee, USA
沈建法教授 Professor Jianfa SHEN	香港中文大學地理與資源管理學系 Department of Geography & Resource Management, The Chinese University of Hong Kong, HKSAR, China
石火生教授 Professor Huosheng SHI	中國南京大學地球科學學系 Department of Earth Science, Nanjing University, China
蘇基朗教授 Professor Keelong SO	香港中文大學歷史系 Department of History, The Chinese University of Hong Kong, HKSAR, China
孫漢秋教授 Professor Hanqiu SUN	香港中文大學計算機科學與工程學系 Department of Computer Science & Engineering, The Chinese University of Hong Kong, HKSAR, China

姓名 Name	學系 Organization
鄧聰教授 Professor Chung TANG	香港中文大學中國考古藝術研究中心 Centre of Chinese Archaeology and Art, The Chinese University of Hong Kong, HKSAR, China
鄒經宇教授 Professor Jinyeu TSOU	香港中文大學建築學系 Department of Architecture, The Chinese University of Hong Kong, HKSAR, China
段樵教授 Professor Chyau TUAN	香港中文大學決策科學與企業經濟學系 Department of Decision Science & Managerial Economics, The Chinese University of Hong Kong, HKSAR, China
王翠珍教授 Dr. Cuizhen WANG	美國密蘇里大學哥倫布分校地理系 Department of Geography, University of Missouri-Columbia, USA
王冬根教授 Professor Donggen WANG	香港浸會大學地理系 Department of Geography, Hong Kong Baptist University, HKSAR, China
徐揚生教授 Professor Yangsheng XU	香港中文大學自動化與計算機輔助工程學系 Department of Automation & Computer-Aided Engineering, The Chinese University of Hong Kong, HKSAR, China
嚴曉海教授 Professor Xiaohai YAN	美國德拉華州大學海洋研究院 Graduate College of Marine Studies, University of Delaware, USA
楊立民教授 Professor Limin YANG	香港中文大學太空與地球信息科學研究所 Institute of Space & Earth Information Science, The Chinese University of Hong Kong, HKSAR, China
俞孔堅教授 Professor Kongjian YU	中國北京大學生態學學系 Department of Ecology, Peking University, China
詹飛炳教授 Professor F. Benjamin ZHAN	美國德州大學德州地理信息科學中心 Texas Center for Geographic Information Science, Texas State University, USA
張良培教授 Professor Liangpei ZHANG	中國武漢大學測繪遙感信息工程國家重點實驗室 State Key Laboratory for Information Engineering in Surveying, Mapping & Remote Sensing (LMARS), Wuhan University, China
趙永超教授 Professor Yongchao ZHAO	中國科學院遙感應用研究所 Institute of Remote Sensing Applications, Chinese Academy of Sciences, China
周成虎教授 Professor Chenghu ZHOU	中國科學院資源與環境信息系統國家重點實驗室 State Key Laboratory of Resource & Environment Information System, The Chinese Academy of Sciences, China
周啟鳴教授 Professor Qiming ZHOU	香港浸會大學地理系 Department of Geography, Hong Kong Baptist University, HKSAR, China
朱慶教授 Professor Qing ZHU	中國武漢大學測繪遙感信息工程國家重點實驗室 State Key Laboratory for Information Engineering in Surveying, Mapping & Remote Sensing (LMARS), Wuhan University, China
鄒軍教授 Professor Jun ZOU	香港中文大學數學系 Department of Mathematics, The Chinese University of Hong Kong, HKSAR, China



M I L E S T O N E
里 程 碑

地球信息科學聯合實驗室
Joint Laboratory for GeoInformation Science

國家遙感中心香港研究開發與培訓基地
National Remote Sensing Centre of China
Hong Kong Base for Research Development and Training

聯合國亞太經社會區域遙感工作組香港聯絡處
United Nations Economic and Social Commission for
Asia and the Pacific Contact Point of Regional Working Group on
Remote Sensing, GIS and Satellite-based Positioning

圓玄衛星遙感研究中心
The Yuen Yuen Research Centre for Satellite Remote Sensing

衛星遙感地面接收站
The Satellite Remote Sensing Ground Receiving Station

中國城市住宅研究中心
Center of Housing Innovations

地球信息科學聯合實驗室

Joint Laboratory for GeoInformation Science



中國科學院和香港中文大學於1997年8月28日合作成立地球信息科學聯合實驗室，其宗旨為：

1. 促進中國地球信息科學技術與世界接軌，宏揚民族文化，吸納世界先進的科學技術
2. 與世界知名科學家共同推動和發展地球信息科學，促進國家信息化建設
3. 形成中國科學院與香港中文大學科技合作，學術交流和人才培養的基地

中國科學院路甬祥院長和香港中文大學李國章校長主持了聯合實驗室的開幕儀式，中國國家科學技術委員會、中國國家自然科學基金委員會和聯合國亞太經社會的代表到會祝賀，並期望聯合實驗室發展成為亞洲地區重要的地球信息科學教研中心。

On 28 August 1997, as a collaboration between Chinese Academy of Sciences (CAS) and The Chinese University of Hong Kong (CUHK), the Joint Laboratory for GeoInformation Science (JLGIS) was founded with the following objectives:

1. To develop China's worldwide technological exchange and international standard in GeoInformation science in order to promote the national culture;
2. To cooperate with renowned scientists in promoting and developing GeoInformation Science in order to accelerate the development of information infrastructure in China;
3. To establish a foundation for technological collaboration, academic exchange and training between CAS and CUHK.

The opening ceremony of JLGIS was officiated by Professor LU Yongxiang, President of CAS, and Professor Arthur K.C. LI, Vice-Chancellor of CUHK. The ceremony was attended by representatives from the China's National Science and Technology Commission, China's National Natural Science Foundation and the Economic and Social Commission for Asia and the Pacific Region (ESCAP) of the United Nations. All expressed their wish that JLGIS would be established as an important education and research centre of GeoInformation Science in Asia.



李國章校長（中）、路甬祥院長（右二）、聯合實驗室特邀顧問楊振寧院士（左二）和錢果豐博士（右）及學術委員會主任陳述彭院士（左）合影留念
 Professor Arthur K.C. Li (centre), Vice Chancellor of CUHK, Professor Yongxiang Lu (2nd right), President of CAS, Professor Chenning Yang (2nd left) and Dr. Raymond K.F. Ch'ien (right), Special Advisors of JLGIS, and Professor Shupeng Chen (left), Director of Academic Committee of JLGIS



聯合國亞太經社會代表何昌垂博士（右）向李國章校長（左）及聯合實驗室特邀顧問錢果豐博士表達對實驗室的期望
 Dr. Changchui He (right), representative from United Nations ESCAP expressed his expectations of JLGIS to Professor Arthur K.C. Li (left), Vice Chancellor of CUHK and Dr. Raymond K.C. Ch'ien, special advisor of JLGIS



中國國家自然科學基金會委員會常務副主任孫樞教授（中）和張新時副主任
 祝賀聯合實驗室成立，並參加學術委員會第一次會議
 Professor Shu Sun and Professor Xingshi Zhang, general associate directors of National Natural Science Foundation of China attended in the opening ceremony of JLGIS and the first meeting of academic committee of JLGIS



地球信息科學聯合實驗室學術委員會主任郭華東教授（中）和實驗室主任林璉教授（左）周成虎教授（右）在記者招待會宣佈香港環遙感計劃
 Professor Huadong Guo (centre) and the JLGIS directors, Professor Hui Lin (left) and Professor Chenghu Zhou (right) announced the Hong Kong Environmental Remote Sensing in the press conference

國家遙感中心

香港研究開發與培訓基地

National Remote Sensing Centre of China Hong Kong Base for Research Development and Training



國家科技部徐冠華部長（右二）主持中國遙感中心香港基地的成立典禮
Minister Guanhua Xu (2nd right), Minister of Science & Technology of PRC Government officiated the Opening Ceremony of the Hong Kong Base of China Centre for Remote Sensing



國家自然科學基金委員會主任、聯合實驗室顧問陳宜瑜院士（左四）訪問中大虛擬現實實驗室

Academician Yiyu Chen (4th left), President of National Science Foundation of China and the Advisor of JLGIS, visited the Virtual Reality Laboratory of CUHK

國家遙感中心香港研究開發與培訓基地於2000年12月正式成立，以促進香港與內地在衛星和航空遙感科技方面的合作，包括遙感信息科技人才的培訓、遙感信息系統的研發、環境監測方法的改進等，為香港遙感信息科技和相關軟件產業的發展提供新的契機。

National Remote Sensing Centre of China - Hong Kong Base for Research Development and Training was appointed in December 2000. Its major purpose is for enhancing the technological collaboration between Hong Kong and the mainland China in the aspects of spaceborne and airborne satellite remote sensing, training and development of remote sensing scientists, research and development on remote sensing systems, improvement on environmental monitoring method, etc. The establishment of Hong Kong Base becomes a new turning point for advancement of the Hong Kong remote sensing information and technology and the related software industry.

聯合國亞太經社會區域 遙感工作組香港聯絡處

United Nations Economic and Social Commission for Asia and the Pacific Contact Point of Regional Working Group on Remote Sensing, GIS and Satellite-based Positioning



地球信息科學聯合實驗室於2001年受國家科技部和聯合國委託主辦的自然災害監測與管理國際培訓課程
JLGIS organized an international training program on natural disaster monitoring and management assigned by the Ministry of Science and Technology of China and the United Nations in Year 2001

2001年獲選為聯合國亞太經社會區域遙感、衛星導航和地球信息科學工作組香港聯絡處，建立地球信息科學國際學術交流與培訓中心。

In 2001, the Contact Point of UNESCAP Regional Working Group on Remote Sensing, GIS and Satellite-based positioning has been established. The contact point becomes an international academic exchange and training centre for the earth information science.



研究所長林暉教授（左）出席2005年在伊朗舉行的聯合國亞太經社會區域工作組會議
Professor Hui Lin (left), director of ISEIS, attended the UNESCAP Regional Working Group Meeting in Iran in 2005.

圓玄衛星遙感研究中心

The Yuen Yuen Research Centre for Satellite Remote Sensing

承蒙香港圓玄學院慷慨捐款，圓玄衛星遙感研究中心於2004年3月正式成立。本中心的使命是致力推廣遙感之研究及應用，革新遙感技術，以回饋社會。

研究領域方面，本中心除了致力發展遙感技術有關理論和研究方法外，還努力不懈地發展在香港和中國南方地區的農業遙感應用、自然資源管理、海岸和海洋環境、緊急反應和自然災害監視和協調、人類健康和環境等多方面的研究。

圓玄衛星遙感研究中心更和政府、大學及世界各地不同的機構合作，以推動技術上的學術及資料交流。



圓玄衛星遙感研究中心命名典禮暨贈款儀式
Cheque Presentation Ceremony and Naming Ceremony of The Yuen Yuen Research Centre for Satellite Remote Sensing



中文大學校長金耀基（左）頒贈紀念品給予圓玄學院主席湯偉奇（右），以答謝圓玄學院對衛星遙感，研究及發展的支持

Souvenir Presentation by Professor Ambrose King (left), Vice Chancellor of CUHK to Mr. Waiki Tong (right), Chairman of The Yuen Yuen Institute for thank you its support towards research and development of satellite remote sensing



圓玄衛星遙感研究中心
The Yuen Yuen Research Centre for Satellite Remote Sensing

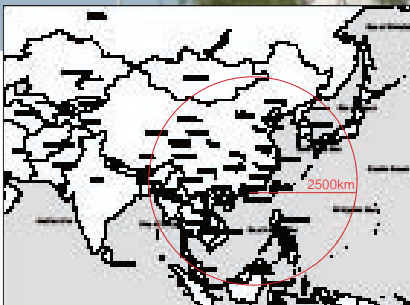
With a generous donation from The Yuen Yuen Institute of Hong Kong, The Yuen Yuen Research Centre for Satellite Remote Sensing was established in March 2004. Its mission is to be a Centre-of-Excellence committed to the promotion of remote sensing researches and applications to maximize the benefits to the society from new and emerging remote sensing technologies.

The research fields of the centre concern theoretical and methodological research, remote sensing of agriculture, natural resource management, coastal and marine environment, emergency response and natural disaster monitoring and mitigation, human health and environmental researches in Hong Kong and South China region.

The centre has also established and continues to promote scientific academic and information exchanges with government agencies, universities and other organizations worldwide.

衛星遙感地面接收站

The Satellite Remote Sensing Ground Receiving Station



香港中文大學衛星遙感地面接收站能收數據的範圍
The coverage of Satellite Remote Sensing Ground Receiving Station of CUHK

有賴國家科學技術部863高技術研究發展計劃及香港特別行政區政府創新科技署撥款支持，「衛星遙感地面接收站」第一期工程於2005年10月完成，並於2006年1月1日正式開始運作。本站正式運作後，將可紀錄及處理大量從遙感衛星接收的雷達數據，為本港、華南及周邊地區的政府與私人機構及其他用戶提供各項有用資料。

本站接收的是來自ENVISAT遙感衛星的雷達圖像數據。本站將為常年多雲多雨的香港、以至華南地區及周邊國家與區域進行全天候的環境監測，如：山泥傾瀉、地陷、地震、海嘯、洪水及颱風等自然災害，減少人命和經濟損失。長遠而言，本站更將提供重要平台，促進香港與國內的技術合作，加速大珠江三角地區遙感技術產業的發展。

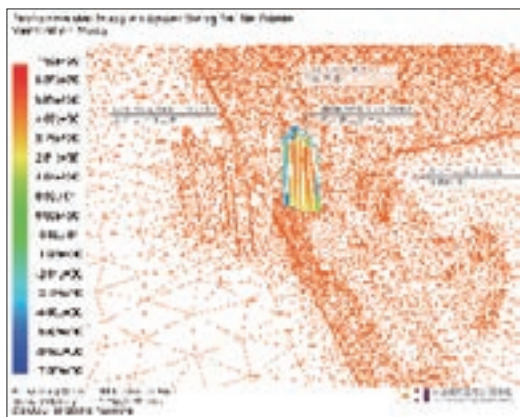
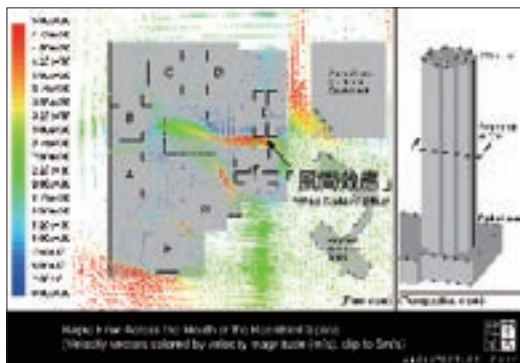
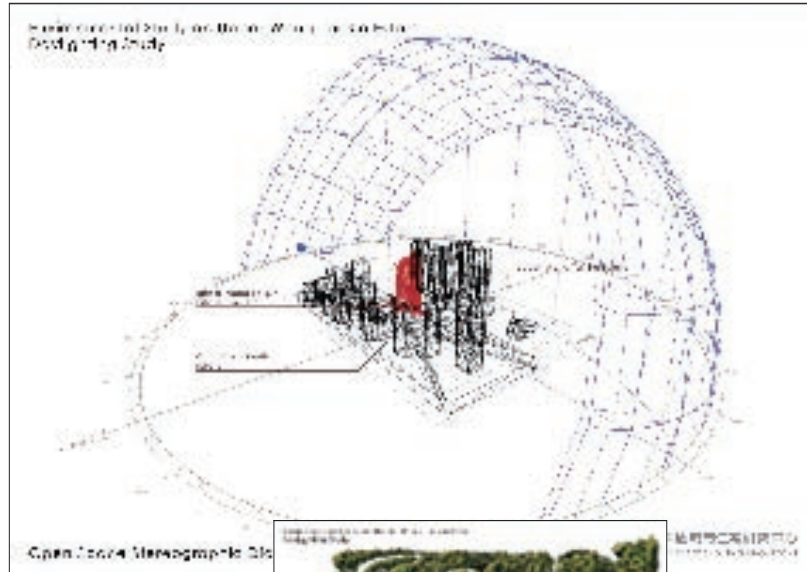
With the keen support of 863 High Technology Research and Development Program of the Ministry of Science and Technology of the People's Republic of China and the Innovation and Technology Commission of the HKSAR Government, the construction of the first phase of the Satellite Remote Sensing Ground Receiving Station was completed in October, 2005. The station has been commenced the full operation since 1st January, 2006. With commencement of the full operation through the Station, remote sensing data are received and processed which can provide useful information to governments and private corporations and other users in Hong Kong, South China and the neighboring regions.

The station operates with receiving and processing radar images from the ENVISAT Remote Sensing Satellite. The imagery can be used to help monitoring the environment and natural disasters including landslides, subsidence, earthquakes, tsunamis, floods and typhoons, thereby reducing the risk of civilian casualties and economic loss. In long run, the station will serve as an important platform to enhance technological collaboration between Hong Kong and mainland China, accelerating the development of the remote sensing industry in the greater Pearl River Delta region.

中國城市住宅研究中心

Center for Housing Innovations

中國城市住宅研究中心於一九九八年在國家建設部科學技術委員會的支持下在香港中文大學設立。中心源於香港中文大學建築學系與國家建設部科學技術委員會及相關機構的合作，多年來共同致力於中國城市住宅的深入研究。在國家建設部及各相關機構的支援與合作之下，歷年來的各項研究對於國家節能的策略性規劃、住宅性能技術標準、國家十五科技攻關計畫課題下的居住區及其環境的規劃設計、以及如風道、電梯等住宅設備設計與規範發展等均有所貢獻。較具影響的研究項目包括香港淘大花園非典型肺炎傳播途徑研究、與香港房屋署合作的环境設計及評估策略夥伴計劃和可快速組合隔離醫院設計研究。



With the support from the Science and Technology Committee (STC) of the Ministry of Construction, P. R. China (MOC), the Center for Housing Innovations (CHI) was established in 1998 in the Department of Architecture, The Chinese University of Hong Kong. In collaboration with the MOC and other research academies in the mainland, CHI has contributed to the China urban housing research over the years in multiple dimensions, including the study of the National Strategic Plan on Energy Efficiency, the study of the National GB Performance-based Building Guideline, the study of GB National Code to regulate the internal air-duct and elevator for domestic use. Other significant research projects of CHI include the Architectural Studies of Air Flow at Amoy Garden and Its Possible Relevance to the Spread of SARS, the Strategic Partnership with HKSAR Housing Department and the Rapidly Assembled Isolation Patient Ward.



A C H I E V E M E N T S
成 果

研究動態
Research Development

培訓與教育
Education & Training

學術交流
Academic & Exchange

合作伙伴
Collaboration & Partnership

服務香港社會
Serving the Community in HKSAR

推廣地球信息科技
Promoting GeoInformation Science & Technology

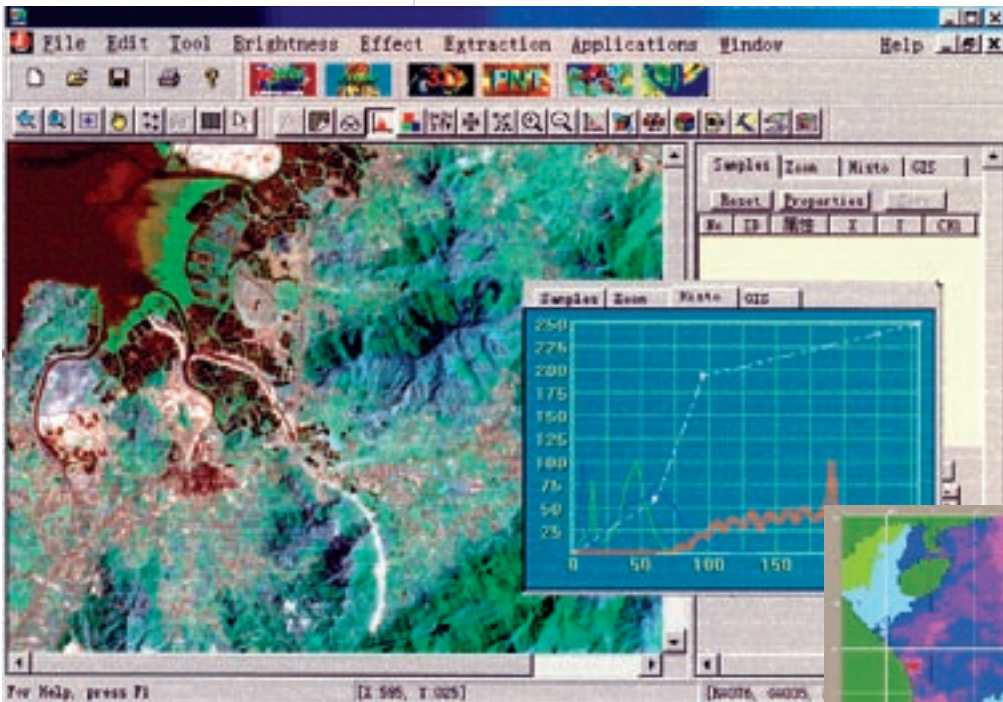
研究動態

Research Development

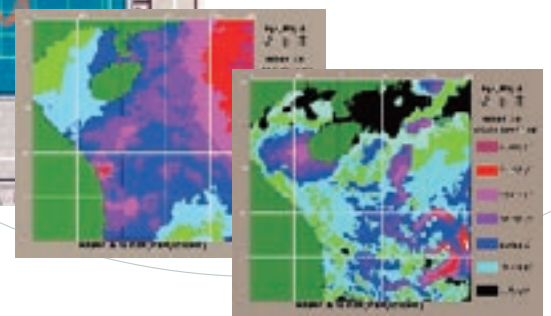


至今，我們獲取中文大學、香港大學教育資助委員會、香港特別行政區政府創新科技署、中國“863”高新技術發展計劃、裘槎基金會、圓玄學院及霍英東基金會等多方面逾九千萬港元的科研和活動經費，發展多個大型創新的研究項目，其中包括：香港首次雷達和彩紅外航空遙感試驗、空間數據挖掘與災害天氣預報、虛擬地理環境系統研究、香港植被與生態環境調查製圖及評估、多雲多雨地區遙感研究等計劃。其中，香港衛星遙感地面站更是香港與內地在新技術領域最緊密合作的工程之一。

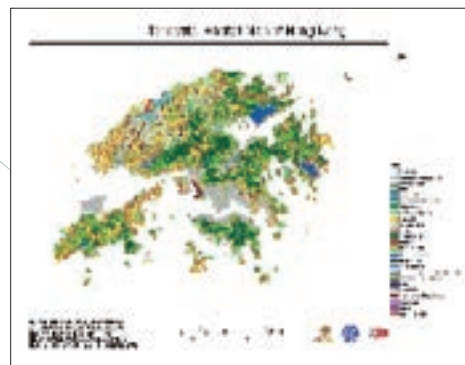
Until now, more than HK\$90 millions from The Chinese University of Hong Kong, “863” High-Tech Research and Development Program of the People’s Republic of China, University Grant Committee, Innovation and Technology Commission of HKSAR Government, The Croucher Foundation, The Yuen Yuen Institute and Fok Ying Tung Foundation have been obtained for conducting various large-scale research projects, for example, The First Radar and Infrared Aerospace Remote Sensing in Hong Kong, Spatial Data Mining and Natural Disaster Forecasting, Virtual Geographical Environment System, Hong Kong Terrestrial Habitat Mapping and Ranking and Cloud-prone and Rainy Area Remote Sensing, etc. Among the research projects, Building & Operating The Satellite Remote Sensing Ground Receiving Station is one of the most significant collaboration with mainland China.



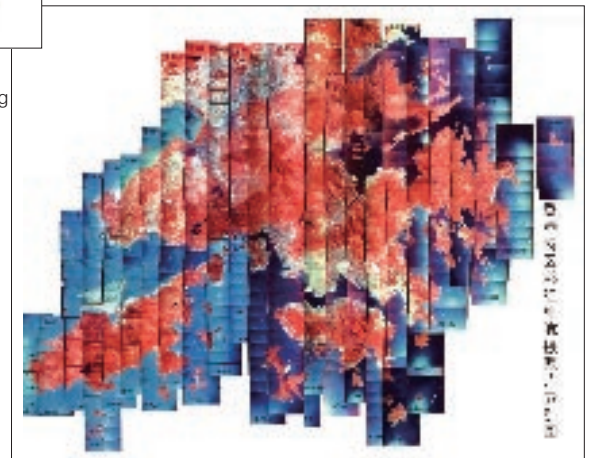
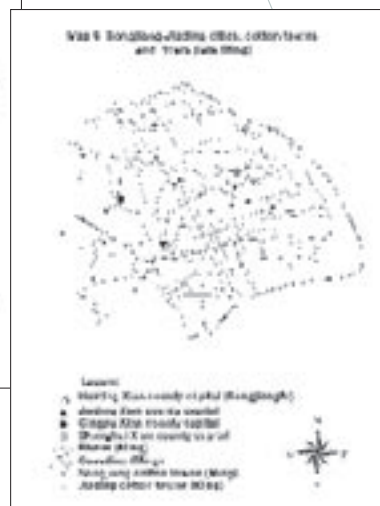
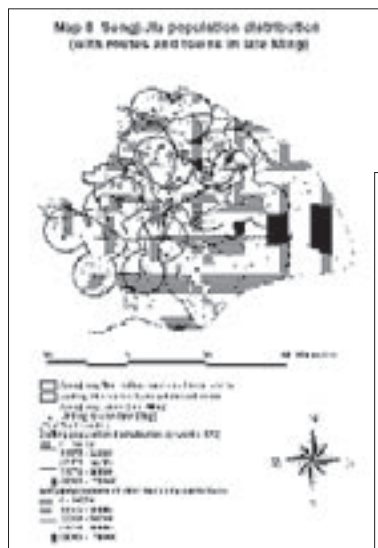
與香港中文大學計算機科學與工程學系教授聯合開發的智能化地理信息分析系統
Intelligent system for geographic information analysis has developed jointly with professors of the Department of Computer Science and Engineering of CUHK



與國家氣象衛星中心合作研究的南中國海面溫度場
Collaboration with National Meteorological Center of China in conducting the research on Sea Surface Temperature of South China Sea



香港植被與生態環境調查製圖及評估
Hong Kong terrestrial habitat mapping and ranking



利用彩紅外航空遙感調查香港地區環境質量
Investigating the environmental quality of HKSAR using airborne colour infrared remote sensing

與香港中文大學歷史系教授蘇基朗教授合作開展的明松江地區棉紡織業歷史地理信息系統研究
Collaboration with Professor Keelong So from Department of History of CUHK in establishing a Historical GIS Database of Cotton Textile Industry in Songjiang Region during the Late Ming China period

培訓與教育

Education & Training



2005年為運輸署開辦的GIS-T培訓課程
A GIS-T training course was provided to HKSAR Transport Department in 2005



研究所於2005年開始開辦全日制及兼讀制地球信息科學哲學碩士博士銜接課程及哲學碩士課程及與地理資源管理學系聯合開辦地理信息科學理學碩士課程及應用地理信息學士後文憑課程
ISEIS offers the full-time and part-time Ph.D. and M.Phil. programmes of GeoInformation Science and Master of Science in GIS and Postgraduate Diploma in Applied GIS with Department of Geography and Resource Management since 2005

自 1997年地球信息科學聯合實驗室成立以來，我們均致力聯合本港、中國和國際著名科研和教育機構推動有關教育及培訓計劃，其中包括：

1. 1997年與台灣大學合辦的“地理信息與持續發展”遠距教學課程，通過視像會議系統，由來自大陸，香港和台灣的學者，同步為在香港中文大學和台灣大學的學生授課。
2. 1998年在裘槎基金會資助下，與美國太空總署和加拿大國家遙感中心合辦雷達遙感高級研究班，培訓海峽兩岸四地以及周邊亞洲國家的大學青年教師和政府的專業人士。
3. 2005年分別聯同多位世界著名遙感及地球信息科學專家及法國海軍學院研究所合辦多雲多雨地區地面及海洋遙感高級培訓班及海岸和海洋地球信息科學國際培訓班。
4. 與中國科學院和武漢大學的國家重點實驗室聯合培養博士後研究員與研究生。其中我們已先後培訓了15名博士後研究員，並陸續在中國、美國、英國、加拿大、澳洲及新加坡等國家出任教授和高級研究員等工作。

研究所更於2005年9月成立地球信息科學研究生學部，開辦全日制及兼讀制地球信息科學哲學碩士博士銜接課程及哲學碩士課程，並與地理資源管理學系聯合開辦地理信息科學理學碩士課程及應用地理信息學士後文憑課程，針對社會上對地球信息科學研究訓練之需求，提供專業及深入的研究及進修課程。

除致力開辦培訓及教育課程外，研究所更致力開發地理信息教學軟件，以推廣及發展地球信息科學在香港中學的應用。

In collaboration with well-known research and educational institutes, we have provided diverse education and training programs. For example:

1. The distance-learning course of “GeoInformation and Sustainable Development” was organized jointly with the National Taiwan University in 1997. With the video conferencing system, lectures can be provided to students from The Chinese University of Hong Kong and Taiwan National University simultaneously.
2. With support of The Croucher Foundation, an advanced research training course of radar remote sensing was run jointly with NASA of the United States, Canada Center for Remote Sensing and CAS in 1998. The objective of the course is to provide training for university teachers and professionals in the governments of HKSAR, China, and the surrounding Asian countries.
3. In collaboration with some distinguished scientists and experts in the fields of remote sensing and GIS from all over the world and French Naval Academy Institute, Advanced Training Workshop on Remote Sensing of Land & Ocean Surface in Cloud-prone & Rainy Area and Procure International Training Workshop on Marine & Coastal GIS were organized in 2005 respectively.
4. In collaboration with the key national laboratories of Chinese Academy of Sciences and Wuhan University, 15 postdoctoral fellows were trained and are now appointed as professors or senior researchers in China, USA, United Kingdom, Canada, Australia and Singapore, etc.

ISEIS established a graduate division of GeoInformation Science in September, 2005. The division not only offers the full-time and part-time Ph.D. and M.Phil. programmes

of GeoInformation Science, but also cooperates with Department of Geography and Resource Management in offering Master of Science in GeoInformation Science and Postgraduate Diploma in Applied Geoinformatic to meet increasing demand and provide professional training in GeoInformation Science.

To promote the application of GeoInformation Science in Hong Kong secondary schools, we are actively involved in developing different GeoInformation Science software.



2006年美國地質調查局對地觀測系統與科學資料中心合辦給予香港特區政府地政總署的遙感培訓課程

The Remote Sensing Training Workshop for Land Department of HKSAR was jointly organized by ISEIS and USGS EROS Data Centre in 2006



2005年舉辦的多雲多雨地區地面及海洋遙感高級培訓班

The Advanced Training Workshop on Remote Sensing of Land and Ocean Surface in Cloud-prone & Rainy Area in 2005

學術交流

Academic Exchange

我們積極拓展國際合作，促進學術交流空間，營造開放的科研和教學環境。經過不斷的努力，我們已將學術交流活動從本港拓展至中國和海外，其中的活動包括：

1. 組織海峽兩岸大城市的城市地球信息系統學術論壇。該論壇已於1998年4月成立，秘書處設在香港中文大學。論壇的宗旨為促進海峽兩岸大型城市的城市地球信息科學的交流與發展。會員城市包括北京市、上海市、臺北市、天津市、重慶市、廣州市、高雄市、深圳市、香港和澳門特別行政區。
2. 成立聯絡海外華人學者的服務網絡。我們與海外華人中最大的地球信息科學學術團體 CPGIS 建立了密切的合作關係。CPGIS 將其中部分聯絡網絡設在香港中文大學，並聯合申請開發中國鄱陽湖流域科研基地。
3. 舉辦和協辦各類不同的國際學術會議和討論會，其中包括：連續兩年協辦“Geoinformatics”國際會議（1998年北京會議和1999年密西根州會議）；受中國國家遙感中心委託，承辦了1999年亞洲遙感會議；於2005年舉辦第一屆多雲多雨遙感國際會議。

We have been actively expanding the platform for academic exchange and have cultivated an open research and teaching environment. Until now, we have extended its academic exchange activities from Hong Kong to China and overseas. The major activities are as follows:

1. The Urban GIS Forum involving large cities from the both side of the Taiwan Strait was started in April 1998, with the Secretariat established in CUHK. The objective of the Forum is to promote exchange and development of mega cities in mainland China and Taiwan. The member cities include Beijing, Shanghai, Taipei, Tianjin, Chongqing, Guangzhou, Kao Hsiung, Shenzhen and Hong Kong and Macao Special Administrative Regions.
2. A service network for overseas Chinese scholars has been set up. A close connection with Chinese Professionals in Geographic Information Science (CPGIS), the biggest Chinese academic organization of GeoInformation Science has been established. Part of CPGIS network has been set up in CUHK. We have submitted a joint application with CPGIS to develop a research base to study the Poyang Lake basin in China.
3. International academic conferences and seminars have been organized. For example, in two successive years, we have involved in organizing the international conference of “Geoinformatics” (the Beijing Conference in 1998 and the Michigan Conference in 1999). Assigned by the National Remote Sensing Centre of China, we organized the Asia Remote Sensing Conference in 1999. The First International Symposium of Cloud-prone and Rainy Areas Remote Sensing was organized in 2005, etc.

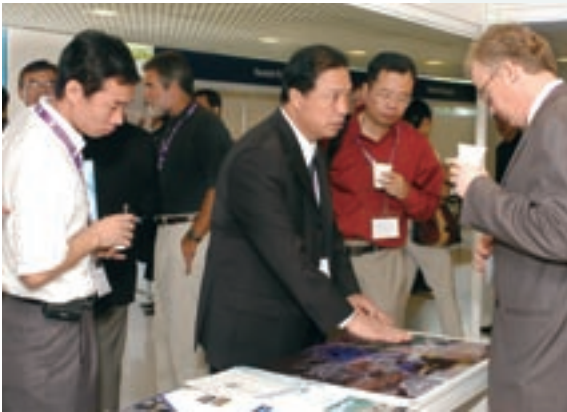


第九屆亞洲巨型城市校際研討會於2004年舉行，並與亞洲各國主要大學組成交流網絡

The 9th Inter-University Seminar on Asian Mega-cities was held in 2004 and formed the exchange network with leading universities



1



2

1. 約三十名中國遙感專家出席2005年1月的多雲多雨遙感會議，討論多雲多雨遙感的最新發展
About 30 experts of Remote Sensing attended the academic meeting for discussing the latest development of cloud-prone and rainy area remote sensing at January, 2005
2. 2005年舉行的第一屆多雲多雨遙感國際會議的會議花絮
Academic Exchange in the First International Symposium of Cloud-prone and Rainy Area Remote Sensing in 2005
3. 2005年在香港舉行的城市地球信息系統學術論壇
Urban GIS Forum was held in Hong Kong in 2005
4. 1999年舉行的第廿屆亞洲遙感會議開幕禮
The Opening Ceremony of the 20th Asian Conference on Remote Sensing in 1999
5. 2003年舉辦的虛擬地理環境與合作的國際會議
International Advanced Workshop on Virtual Geographic Environments and Collaboration in 2003



3



4



5

合作伙伴

Collaboration & Partnership



與長江水利委員會長江科學院共同建設及成立長江ASAR數據應用中心
Collaboration with Changjiang River Scientific Academy for establishment of Changjiang River ASAR Data Application Centre

我們更與不同的中國和海外研究機構建立合作伙伴關係，其中包括：

1. 2004年與法國海軍學院研究所合作開展海洋地球信息科學研究
2. 2004年與德國慕尼黑技術大學合作發展虛擬地理環境研究
3. 2005年與澳洲空間信息合作研究中心合作發展利用遙感及地球信息科學技術以監察中國採礦區地表穩定性之項目
4. 2004年與美國地質調查局對地觀測系統與科學資料中心簽訂合作備忘錄支持開展地球系統科學與遙感方面的合作
5. 2005年與長江水利委員會長江科學院，共同建設及成立長江ASAR數據應用中心，共同推動ASAR資料在國家資源環境監測、生態環境保護與減災防災等領域中的應用
6. 2006年與武漢大學測繪遙感信息工程國家重點實驗室建立長期合作伙伴關係，推動地球信息科學研究



與美國地質調查局對地觀測系統與科學資料中心於2004年11月簽訂合作意向書
The signing ceremony of the Letter of Intent on cooperation between JLGIS and USGS EROS Data Centre was held in November 2004



研究所所長林璉教授（右三）與法國代表克拉若蒙特教授（右四）於2004年2月簽署合作意向書與法國海軍學院研究所合作開展海洋可持續發展研究
Professor Hui Lin (3rd right), director of ISEIS, signed a Letter of Intent with Professor Christopher Claramunt (4th right) of French Naval Academy Research Institute for join research programs on the maritime sustainable development in Feb 2004.



與武漢大學測繪遙感信息工程國家重點實驗室的合作協議簽訂儀式於2006年5月舉行
The signing ceremony of the cooperation agreement with LMARS, Wuhan University in May 2006

We have developed close and diverse collaborations and partnerships with various prestigious tertiary institutions from mainland China and the overseas, including:

1. Cooperation with French Naval Academy Institute in developing marine GIS research since 2004.
2. Cooperation with Technical University of Munich, Germany in developing virtual geographic environment since 2004.
3. Collaboration with The Cooperative Research Centre for Spatial Information (CRCSI), Australia in conducting the project of Area of Monitoring Ground Surface Movement in the Chinese Mining Industry and the Integration of Remote Sensing and GIS.
4. Collaboration with United States Geological Survey Centre for Earth Resources Observation and Science (USGS EROS) in Earth Systems Science and Remote Sensing Development in 2004.
5. Establishment of Changjiang River ASAR Data Application Centre jointly with Changjiang River Scientific Research Institute in developing and promoting the application of ASAR data in the national resources environmental monitoring, ecological environmental protection and disaster monitoring in 2005.
6. Establishment of a long term relationship with State Key Laboratory for Information Engineering in Surveying, Mapping and Remote Sensing, Wuhan University in conducting various researches in Geoinformation Science in 2006.

服務香港社會

Serving the Community in HKSAR

我們一向本著「取之社會、用之社會」之原則，視服務社會為我們的重要任務。我們向政府多個部門提供專業的諮詢服務，例如：協助漁農自然護理署開發郊野公園管理信息系統及協助屯門警署開發追蹤罪犯的信息系統等。我們還向香港特別行政區規劃署、漁農自然護理署、路政署、入境事務處等多個部門提供遙感衛星圖像資料，協助政府作出準確的決策及規劃。

除向香港各高等院校及中學提供遙感衛星圖像以助他們開展地球信息科學的教學研究及培訓項目外，我們藉著舉辦多個公眾演講會，讓學生及公眾人士對遙感及地球信息科學的應用有更多的了解。

為社會作出貢獻的同時，我們亦可從中探索研究及技術轉移的新方向，不斷開展創新的科研項目。

Serving the community is an important task for us. We assist different departments of HKSAR Government, for example, Planning Department, Agriculture, Fisheries and Conservation Department, Highways Department and Immigration Department in planning and decision making by providing remote sensing satellite images. At the same time, we provide professional consultancy services to various departments of HKSAR government. For instance, we helped Agriculture, Fisheries and Conservation Department in developing a management information system of country parks and Tuen Mun Division of The Hong Kong Police in developing an information system of criminal pursuing, etc.

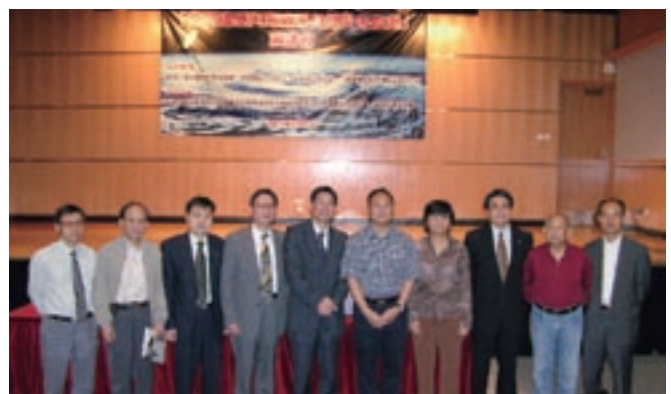
We not only assist several tertiary institutions and secondary schools in Hong Kong in developing their researches and training projects by providing satellite remote sensing images, but also organize various public lectures and seminars to let students and public have better understanding in the application of Remote Sensing and GeoInformation Science.

In return, we can explore new direction of research and technological transfer to develop many innovative research projects.



研究所於2005年1月為香港中小學生舉辦“從太空觀察海嘯等自然災害”公開講座，以積極宣傳地球信息科學及遙感的發展與應用

ISEIS organized a public lecture of “Tsunami and Other Nature Disasters as Seen from Space” for primary and secondary schools for promoting the development and application of GIS and Remote Sensing in January 2005



研究所於2005年5月和社會數個機構合辦的衛星遙感與海嘯等自然災害演講會，以宣傳衛星遙感在自然災害的應用

ISEIS collaborated with other associations in organizing a public seminar of Remote Sensing, Tsunami and Nature Hazards in May 2005



研究所所長林暉教授與香港警員討論地球信息科學在邊境管制中心的應用
 Professor Hui Lin, director of ISEIS, discussed the application of GIS for the border control with Hong Kong Police



向政府相關部門介紹最新的研究成果
 Introducing the latest development of our researches to the related department of HKSAR



研究所每年參與不同會議的展覽，以宣傳遙感和地球信息科學的教育
 ISEIS often joins different exhibitions of large-scale conferences for promoting the education of Remote Sensing and GIS every year

推廣地球信息科技

Promoting GeoInformation Science & Technology



研究所不僅在國內外學術期刊，也積極編撰學術著作、發表研究成果
Various journals and books are published every year

自 1997年地球信息科學聯合實驗室成立以來，我們接待了數以千計來自海內外的許多政府官員、學者、工商界、專業界人士以及中小學教師及學生，積極宣傳地球與空間信息科技的發展與應用，爭取社會各界對於地球信息科技的理解與支援。

除此，我們不僅在國內外學術期刊發表研究成果，並積極編撰學術著作、衛星影像地圖集和學術會議論文集，並負責出版英文學術期刊《地理信息科學》和中文系列論文集《城市地理信息系統學術論壇》。

Since establishment of Joint Laboratory for Geoinformation Science in 1997, we have received thousands of local and overseas visitors, including government officials, scholars, and guests from business, industrial, professional circles and teachers and students from primary and secondary schools. We took this as an opportunity to promote the Geoinformation Science and technology and to enhance the understanding and win support from the society.

We have actively published many research papers both in Chinese and international academic journals. Meanwhile, we have also written and edited books, remote sensing image atlas, and conference proceedings. We are also the publisher of the English journal of Geographic Information Sciences and the Chinese proceedings series Urban GIS Forum.



1



2



3



4



5

1. 中國神舟六號太空人費俊龍先生、聶海勝先生於2005年參觀研究所
The astronauts of Shen Zhou VI, Mr. Junlong Fei and Mr. Haisheng Nie visited ISEIS in 2005
2. 研究所所長林琿教授（左）向國家科學技術部副部長馬頌德教授（右二）介紹遙感衛星圖像
Professor Hui Lin (left), Director of ISEIS introduced the Satellite Remote Sensing Image to Professor Songde Ma (2nd right), Vice Minister of Science and Technology of China
3. 研究所所長林琿教授（左）致送紀念品予國家建設部副部長仇保興先生（右）
Souvenir Presentation by Professor Hui Lin (left), Director of ISEIS to Minister Baoxing Qiu (right), Vice Minister of Construction of the PRC
4. 國家建設部部長汪光燾教授（左三）於2005年參觀研究所
Minister Guangtao Wang (3rd left), Minister of Construction of the PRC visited ISEIS in 2005
5. 沙田圍呂明才小學於2006年2月參觀研究所
Baptist (STW) Lui Ming Choi Primary School visited ISEIS in February 2006

聯絡

Contact

Address 地址

Room 615, Esther Lee Building, The Chinese University of Hong Kong, Shatin, Hong Kong
香港沙田中文大學利黃瑤璧大樓615室

Tel 電話

(852) 2609 6538

Fax 傳真

(852) 2603 7470

Email 電子郵箱

iseis@cuhk.edu.hk

Website 網頁

<http://www.iseis.cuhk.edu.hk>





Institute of Space and Earth Information Science
The Chinese University of Hong Kong

香港中文大學太空與地球信息科學研究所