

APPLICATION PROCEDURES

申請程序

Applicants should make their applications via the Internet
https://www.gradsch.cuhk.edu.hk/onlineapp/programme_list.aspx?FAC=ERG

After completing of on-line application, all required supporting documents should be mailed to the Department of Biomedical Engineering using the address below:

BME Postgraduate Admission
Department of Biomedical Engineering
The Chinese University of Hong Kong
Shatin Hong Kong

申請人應經互聯網申請入學，
https://www.gradsch.cuhk.edu.hk/onlineapp/programme_list.aspx?FAC=ERG

填妥網上申請表格後，需要將有關證明文件寄往生物醫學工程學系。

郵寄地址：香港新界沙田香港中文大學生物醫學工程學系研究院課程入學組

APPLICATION DEADLINE

申請截止

End of April, Every year

每年 4 月底



香港中文大學
The Chinese University of Hong Kong



Department of
Biomedical Engineering
The Chinese University of Hong Kong



FOR MORE INFORMATION

BME Postgraduate Admission
Department of Biomedical Engineering
The Chinese University of Hong Kong

Tel: (852) 3943 0853

Email: bmemsc@cuhk.edu.hk

Website: www.bme.cuhk.edu.hk/new/msc.php



香港中文大學
The Chinese University of Hong Kong



Department of
Biomedical Engineering
The Chinese University of Hong Kong

Master of Science Programme in BIOMEDICAL ENGINEERING 生物醫學工程學理學碩士課程

Full time 全日制 / Part time 兼讀制

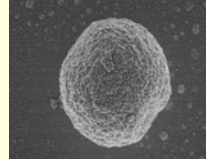
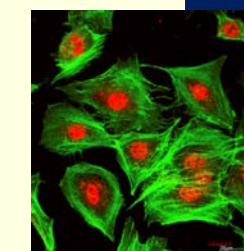
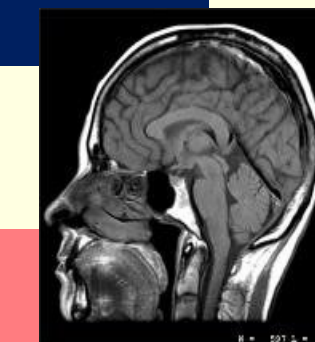
Explore
探索



Innovate
創新



Care
關懷



A joint programme by Faculty of Engineering and Faculty of Medicine
Biomedical Engineering = Bio-Science + Medicine + Engineering



PROGRAMME INFORMATION

課程簡介

BME Biomedical Engineering is a dynamic, interdisciplinary and rapidly advancing profession that addresses the technological needs of healthcare and related areas.

With an ageing world population, especially those of Hong Kong and China, and rising demand for better disease treatments, emerging health concerns caused by modern living style and continuous expansion of new medical technologies, BME professionals have promising career prospects in hospitals, R&D of healthcare technology, medical device manufacturing and sales, and service management.

This programme offers courses that cover a range of essential topics within BME including biochemical technology, medical imaging, bioinformatics, biomechanics, bionanotechnology, rehabilitation, prosthetics, medical instrumentation and medical device regulatory affairs. Adminstrated by the Department of Biomedical Engineering, which is the first BME department established in Hong Kong, this programme is taught by faculty members from Faculty of Medicine, School of Life Sciences and Faculty of Engineering. Students are exposed to latest technical contents accumulated by practicing specialists.

生物醫學工程 (BME) 致力於醫療保健及相關領域的技術需求發展，是一個充滿活力、跨學科和迅速發展的行業。

隨著世界人口老化 (特別是香港和中國)，疾病治療標準持續提高，現代生活方式引起的健康問題日益嚴重，新型醫療設備的需求相繼不斷擴大，生物醫學工程(BME)專業人才在醫院、醫療保健技術研發、醫療器械製造和銷售以及服務管理上的發展機會大幅提升。

香港中文大學生物醫學工程理學碩士課程是由首間在香港成立的生物醫學工程學系舉辦。本課程邀請了來自醫學院，生命科學學院和工程學院的教授授課，內容涵蓋了生物科學、醫學及工程等一系列的重要課題，其中包括生物化學技術、生物信息學、生物力學、生物納米技術、醫學成像、康復、假肢、醫療器械和醫療器械監管等。學生可在課堂中接觸到不同範疇的專業人士，從而獲取最新資訊及技術內容。

MISSION 使命

To be the premier source of well-educated biomedical engineers in the broad fields of medical devices, biosensors, bioinformatics, biomaterials, medical biotechnologies, and to nurture future leaders in the field of biomedical engineering.

在醫療儀器、生物感測器、生物資訊、生物材料、醫學生物科技的廣闊領域中，培育一群受良好培訓的生物醫學工程師作先驅，以及在生物醫學工程學裡栽培未來的領袖。

1. Qualifications for Admission:

The applicant should have:

- graduated from a recognized university and obtained a Bachelor's degree, normally with honours not lower than Second Class; or
- graduated from an honours programme of a recognized university with a Bachelor's degree, normally achieving an average grade of not lower than "B" in undergraduate courses; or
- completed a course of study in a tertiary educational institution and obtained professional or similar qualifications equivalent to an honours degree.

2. Additional Entry Requirements:

All applicants should fulfill the General Qualifications for Admission and the English Language Proficiency Requirement prescribed by the Graduate School. For more details, please visit the Graduate School's homepage at <https://www.gs.cuhk.edu.hk/>.

Non-local students who meet the entry requirements will be accepted 符合入學要求的非本地生之申請亦會被接受。

STUDY MODE

學習模式

We offers both part-time and full-time mode study on Master of Science Programme in Biomedical Engineering.

Full-Time Mode Study

- Normative Study Period : 1 year
- Maximum Study Period: 3 years
- Tuition Fee: Two instalments of **HK\$165,000

Part-Time Mode Study

- Normative Study Period : 3 years
- Maximum Study Period: 4 years
- Tuition Fee: Five instalments of **HK\$165,000

生物醫學工程學系提供全日制及兼讀制理學碩士學位課程。

全日制

- 修業期通常為一年，最長不超過三年
- 整個課程學費：港幣 165,000 元
- 分兩期繳費，每期為港幣 82,500 元

兼讀制

- 修業期通常為三年，最長不超過四年
- 整個課程學費：港幣 165,000 元
- 分五期繳費，每期為港幣 33,000 元

****Students may benefit substantial tuition fee reduction up to HK\$33,000 through several award schemes based on their academic performance (Details see "PROJECT AWARD SCHEME")****
學生可通過下列獎勵計劃享有學費回贈最高可達港幣 33,000 元。

PROJECT AWARD SCHEME

獎勵計劃

Project Excellence Award 卓越專題研究獎: HK\$18,000

Students who have achieved grade B+ or above in MSc Project
學生於專題研究學科中最終成績考獲達 B+或以上

Research Excellence Award 卓越科研獎: HK\$10,000

Eligibility for Application: First author of a publication in an international peer-reviewed journal based on his/her work conducted in MSc Project (for current students or alumni within 2 years after the date of graduation)
學生以第一作者身份在國際學術期刊中發表他的專題研究文章 (適用在讀生或畢業 2 年內的校友)

International Conference Scholarship 國際會議獎學金: HK\$5,000

Eligibility for Application: Acceptance of an abstract submitted as the first author to an international conference outside of Greater China Region based on the students' work conducted in MSc Project (for current students or alumni within 2 years after the date of graduation)
學生參與國際學術會議並以第一作者身份發表他的專題研究摘要 (適用在讀生或畢業 2 年內的校友)

Benefit

Benefit

CURRICULUM STRUCTURE

課程結構

COURSEWORK REQUIREMENT

畢業要求

Student are required to complete a minimum of 30 units for graduation.

學生至少須修讀三十個學分才能畢業。

Required Courses: 6 units

必修科目：6 學分

Introduction to Biomedical Engineering

生物醫學工程概述

Basic Biomedical Science

基礎生物醫學科學

AND

Elective Courses: 24 units

選修科目：24 學分

Option A: Students may take **MSc Project + 6 taught courses**

OR

Option B: Students may take **8 taught courses**

MSc Project (6 units) 專題研究 (六學分)

Medical Devices and Sensor Networks
醫療儀器和感測器網絡

Medical Robotics
醫用機器人技術與應用

BioMEMS and Biophotonics
生物微機電系統與生物光電技術

Bioinformatics
生物資訊學

Virtual Medicine and Computer Aided Surgery
虛擬醫學與電腦輔助手術

Medical Imaging
醫學影像學

Biomedical Engineering Laboratories
生物醫學工程實驗

Medical Device Regulatory Affairs and Intellectual Property
醫療器械規管和知識產權

Bioelectronics and Nanotechnology
生物電子和納米技術

E-Health Technologies
電子醫療技術

Tissue Engineering
組織工程學

3 units / taught course
每學科：三學分

Students are allowed to take up TWO courses (6 units) offered by:

- ❖ School of Life Sciences, CUHK;
- ❖ Division from Faculty of Engineering, CUHK;
(subject to approval of Divisions/Units concerned)

For more details, please visit our website.

學生可選修最多 2 科(6 學分)由生命科學院或工程學院屬下學系所提供的選修課程 (須獲有關學系批准)

有關詳情，請參閱網上資料

ENTRY REQUIREMENT

1. 入學資格

申請人須：

- 持有認可大學之學士學位，而其榮譽等級通常須為乙等或以上；或
- 於認可大學之榮譽學位課程畢業，且本科課程考獲之平均成績通常須達乙級或以上；或
- 於專上學院完成一項課程，並考獲相等於榮譽學士學位之專業資格。

2. 其他入學要求

申請人須符合研究院「英語能力規定」的條件方可獲考慮取錄入學。詳情請參閱網頁 <https://gs.cuhk.edu.hk/>

* In case there is any change of information, all announcement on the MSc Programme website are regarded as final.

* 如有任何更改，均以網上資料為準。*

APPLICATION PROCEDURES

申请程序

Applicants should make their applications via the Internet
https://www.gradsch.cuhk.edu.hk/onlineapp/programme_list.aspx?FAC=ERG

After completing of on-line application, all required supporting documents should be mailed to the Department of Biomedical Engineering using the address below:

Room 1120, 11/F, William M.W. Mong Building,
Department of Biomedical Engineering
The Chinese University of Hong Kong
Shatin Hong Kong

申请人应经互联网申请入学，
https://www.gradsch.cuhk.edu.hk/onlineapp/programme_list.aspx?FAC=ERG

填妥网上申请表格后，需要将有关证明文件寄往生物医学工程学系。

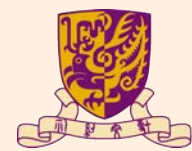
邮寄地址：香港新界沙田香港中文大学生物医学工程学系蒙民伟工程大楼 11 楼 1120 室

APPLICATION DEADLINE

申请截止

End of April, Every year

每年 4 月底



香港中文大學
The Chinese University of Hong Kong



Department of
Biomedical Engineering
The Chinese University of Hong Kong



FOR MORE INFORMATION

BME Postgraduate Admission
Department of Biomedical Engineering
The Chinese University of Hong Kong

Tel: (852) 3943 0853

Email: bmemsc@cuhk.edu.hk

Website: www.bme.cuhk.edu.hk/new/msc.php



香港中文大學
The Chinese University of Hong Kong

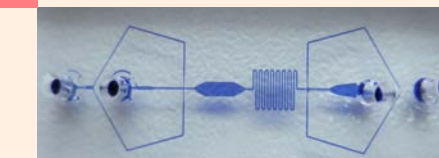


Department of
Biomedical Engineering
The Chinese University of Hong Kong

Master of Science Programme in BIOMEDICAL ENGINEERING 生物医学工程学理学硕士课程

Full time 全日制 / Part time 兼读制

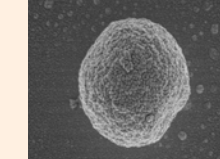
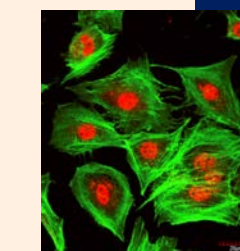
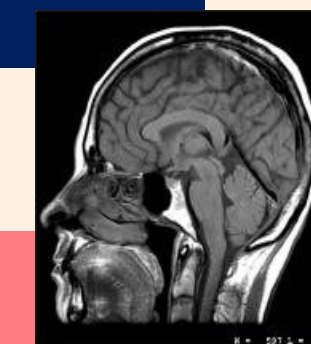
Explore
探索



Innovate
创新



Care
关怀



A joint programme by Faculty of Engineering and Faculty of Medicine
Biomedical Engineering = Bio-Science + Medicine + Engineering



PROGRAMME INFORMATION

课程概况

BME Biomedical Engineering is a dynamic, interdisciplinary and rapidly advancing profession that addresses the technological needs of healthcare and related areas.

With an ageing world population, especially those of Hong Kong and China, and rising demand for better disease treatments, emerging health concerns caused by modern living style and continuous expansion of new medical technologies, BME professionals have promising career prospects in hospitals, R&D of healthcare technology, medical device manufacturing and sales, and service management.

This programme offers courses that cover a range of essential topics within BME including biochemical technology, medical imaging, bioinformatics, biomechanics, bionanotechnology, rehabilitation, prosthetics, medical instrumentation and medical device regulatory affairs. Adminstrated by the Department of Biomedical Engineering, which is the first BME department established in Hong Kong, this programme is taught by faculty members from Faculty of Medicine, School of Life Sciences and Faculty of Engineering. Students are exposed to latest technical contents accumulated by practicing specialists.

生物医学工程 (BME) 是一个综合生命科学、医学和工程学等多领域而发展起来的新兴学科，主要致力于医疗保健及相关领域的技术需求发展，是一个充满活力、发展迅速、前景光明的朝阳行业。

随著世界人口老龄化越加严重，疾病治疗标准持续提高，健康问题日益突出，使得新型医疗设备的需求不断扩大，生物医学工程专业人才在大型医院、医疗保健技术研发、医疗器械制造和销售，以及服务管理上的发展机会将得到大幅提升。

香港中文大学生物医学工程理学硕士课程是由首间在香港成立的生物医学工程学系开办。本课程邀请了来自医学院，生命科学学院和工程学院的教授授课，内容涵盖生物科学、医学及工程等重要课题，其中主要包括生物化学技术、生物信息学、生物力学、生物纳米技术、医学成像、康复、假肢、医疗器械及其监管等。学生可在课堂中接触到不同领域和范畴的专业人士，从而获得相关领域的最新资讯及技术能力。

MISSION 使命

To be the premier source of well-educated biomedical engineers in the broad fields of medical devices, biosensors, bioinformatics, biomaterials, medical biotechnologies, and to nurture future leaders in the field of biomedical engineering.

旨在医疗仪器、生物传感器、生物信息、生物材料、医学生物科技等广阔领域中，致力于培养一群受过良好教育和训练的生物医学工程专业人士，并助力其成为未来该领域的杰出人才及领袖。

1. Qualifications for Admission:

The applicant should have:

- graduated from a recognized university and obtained a Bachelor's degree, normally with honours not lower than Second Class; or
- graduated from an honours programme of a recognized university with a Bachelor's degree, normally achieving an average grade of not lower than "B" in undergraduate courses; or
- completed a course of study in a tertiary educational institution and obtained professional or similar qualifications equivalent to an honours degree.

2. Additional Entry Requirements:

All applicants should fulfill the General Qualifications for Admission and the English Language Proficiency Requirement prescribed by the Graduate School. For more details, please visit the Graduate School's homepage at <https://www.gs.cuhk.edu.hk>

ENTRY REQUIREMENT

录取标准

1. 入学要求

申请人须：

- 获得认可机构的学士学位或经批准的同等级学历。平均成绩通常须为良好 (B) 或以上; 或
- 通常持有认可大学或认可院校颁授的相关工程、科学或医学学士学位; 或
- 在大专院校修毕课程，并取得相当于相关领域的荣誉学位的专业或类似资历; 或
- 其他领域的学士学位毕业，但在生物医学工程或科学技术方面有相应的经验。

2. 英语要求

申请人应具备以下条件之一：

- 母语为英语，或从一所教学语言为英语的学校获得学士学位 (或同等学历)
- 英语语言测试达到以下标准之一：
 - 托福-pBT：550；
 - 托福-iBT：79；
 - 雅思 (学术)：6.5；
 - GMAT：Band 21 (Verbal)
- 符合其他有关条件，请参阅网上资料 <https://www.gs.cuhk.edu.hk>

Non-local students who meet the entry requirements will be accepted 符合录取标准的非本地生之申请亦会被接受

STUDY MODE

学制模式

We offers both part-time and full-time mode study on Master of Science Programme in Biomedical Engineering.

生物医学工程学系提供全日制及兼读制理学硕士学位课程。

Full-Time Mode Study

- Normative Study Period : 1 year
- Maximum Study Period: 3 years
- Tuition Fee: Two instalments of **HK\$165,000

全日制

- 修业期通常为一年，最长不超过三年
- 整个课程学费：HK\$165,000；
- 分两期缴费，每期为 HK\$82,500

Part-Time Mode Study

- Normative Study Period : 3 years
- Maximum Study Period: 4 years
- Tuition Fee: Five instalments of **HK\$165,000

兼读制

- 修业期通常为三年，最长不超过四年
- 整个课程学费：HK\$165,000；
- 分五期缴费，每期为 HK\$33,000

****Students may benefit substantial tuition fee reduction up to HK\$33,000 through several award schemes based on their academic performance (Details see "PROJECT AWARD SCHEME") ****
学生可通过下列奖励计划享有学费回赠最高可達 **HK\$33,000**

PROJECT AWARD SCHEME

奖励计划

Project Excellence Award 卓越专题研究奖：HK\$18,000

Students who have achieved grade B+ or above in MSc Project
学生于专题研究学科中最终成绩达 B+或以上

Research Excellence Award 卓越科研奖：HK\$10,000

Eligibility for Application: First author of a publication in an international peer-reviewed journal based on his/her work conducted in MSc Project (for current students or alumni within 2 years after the date of graduation)
学生以第一作者身份在国际学术期刊中发表专题研究文章 (适用在读生或毕业 2 年内的校友)

International Conference Scholarship 国际会议奖学金：HK\$5,000

Eligibility for Application: Acceptance of an abstract submitted as the first author to an international conference outside of Greater China Region based on the students' work conducted in MSc Project (for current students or alumni within 2 years after the date of graduation)
学生参与国际学术会议并以第一作者身份发表专题研究摘要 (适用在读生或毕业 2 年内的校友)

CURRICULUM STRUCTURE

课程结构

COURSEWORK REQUIREMENT

毕业要求

Student are required to complete a minimum of 30 units for graduation.

学生至少须修读三十个学分才能毕业。

Required Courses: 6 units

必修科目：6 学分

Introduction to Biomedical Engineering

生物医学工程概述

Basic Biomedical Science

基础生物医学科学

AND

Elective Courses: 24 units

选修科目：24 学分

Option A: Students may take **MSc Project + 6 taught courses**

OR

Option B: Students may take **8 taught courses**

MSc Project (6 units) 专题研究 (6 学分)

Medical Devices and Sensor Networks

医疗仪器和感测器网络

Medical Robotics

医用机器人技术与应用

BioMEMS and Biophotonics

生物微机电系统与生物光电技术

Bioinformatics

生物资讯学

Virtual Medicine and Computer Aided Surgery

虚拟医学与电脑辅助手术

Medical Imaging

医学影像学

Biomedical Engineering Laboratories

生物医学工程实验

Medical Device Regulatory Affairs and Intellectual Property 医疗器械规管和知识产权

Bioelectronics and Nanotechnology

电子医疗技术

E-Health Technologies

生物电子和纳米技术

Tissue Engineering

组织工程学

3 units / taught course
每门课程 3 学分

Students are allowed to take up TWO courses (6 units) offered by:

- ❖ School of Life Sciences, CUHK;
- ❖ Division from Faculty of Engineering, CUHK; (subject to approval of Divisions/Units concerned)
- **For more details, please visit our website.****

学生可选修最多 2 门 (共 6 学分) 由生命科学院或工程学院属下学系所提供的选修课程 (须获有关学系批准)

****有关详情，请参阅网上资料 ****

* In case there is any change of information, all announcement on the MSc Programme website are regarded as final.

* 如有任何更改，均以网上公布资料为准