

*Macromusophagy and Silent Blooms:*  
An Interdisciplinary Approach to  
Music Composition

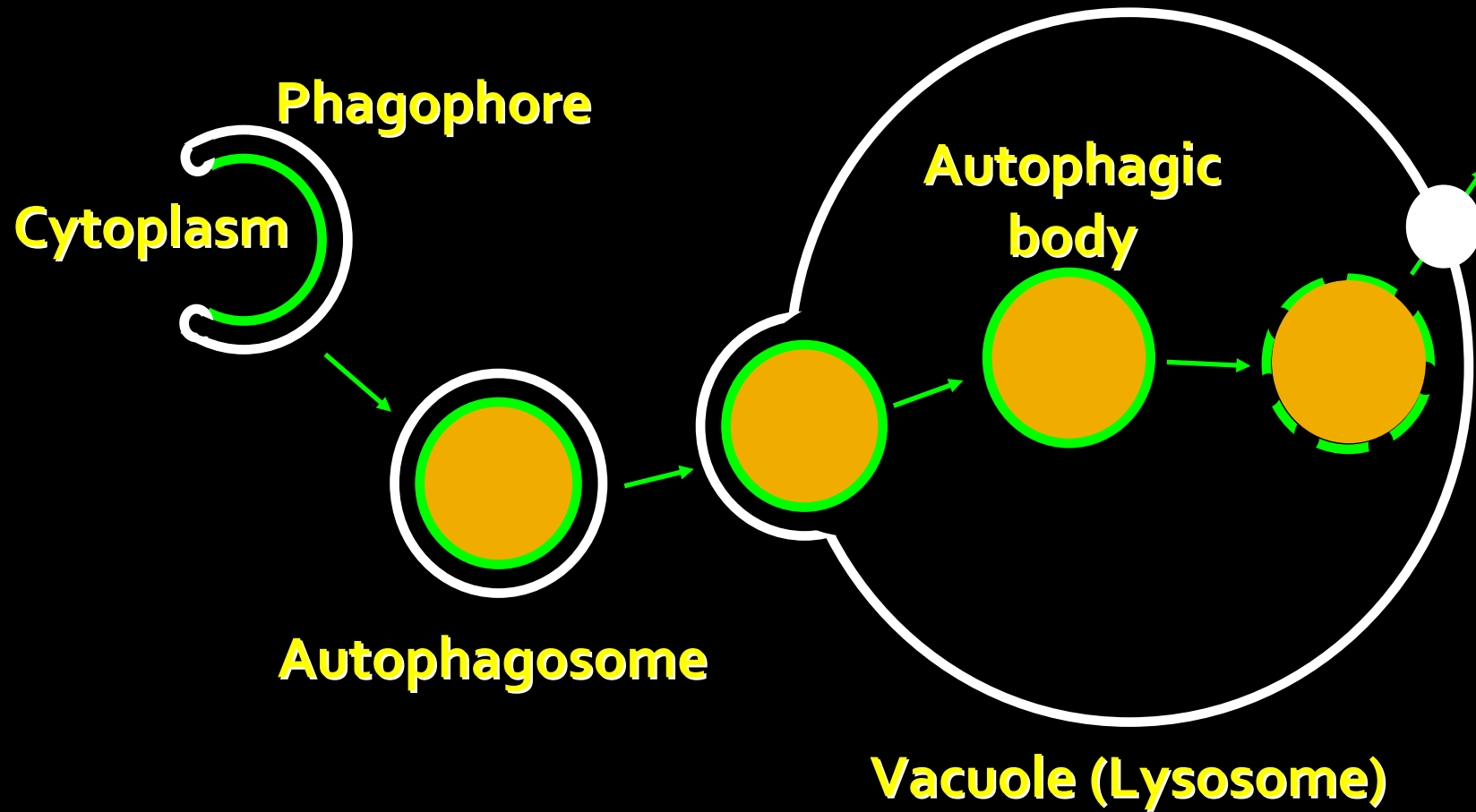
Wendy Wan-Ki Lee ([wendylee@cuhk.edu.hk](mailto:wendylee@cuhk.edu.hk))  
Department of Music

Faculty of Arts Colloquium  
The Chinese University of Hong Kong  
November 29, 2013

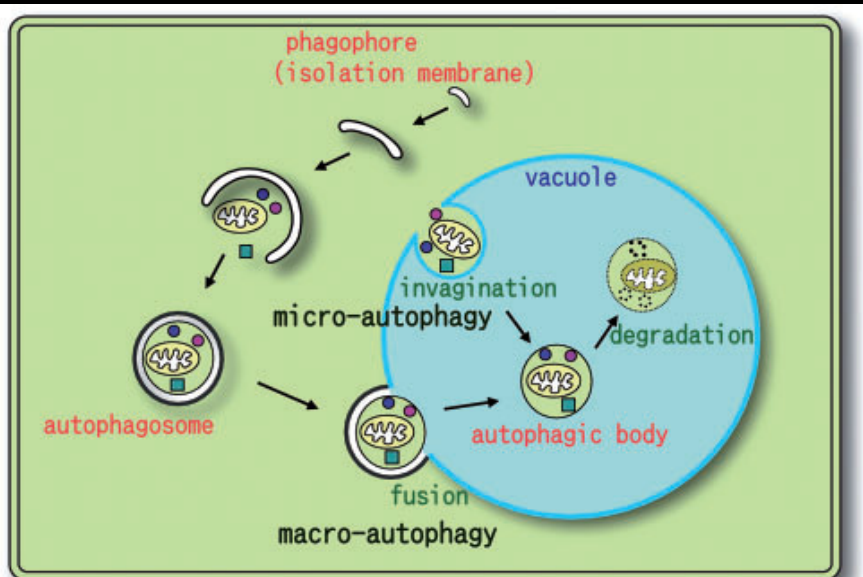
# *Macromusophagy and Silent Blooms:* Our Aims and Methodologies

- a pedagogical tool useful to all of the disciplines involved
- a creative work of art
- appeal to a diverse audience
- music:
  - explore how autophagy can inspire interesting musical relationships
  - trigger listeners' emotional and imaginative responses

# Macroautophagy



# Silent Blooms: Autophagy and Blaschka's Glass Flowers



Source: Yoshimoto, Kohki. "Beginning to Understand Autophagy, an Intracellular Self-Degradation System in Plants." *Plant and Cell Physiology*, 53 (8), 1356, 2012.

Harvard Museum of Natural History, Glass Flowers Collection







Model 100

Pistil  
magnified 15 times

Longitudinal section of ovary  
magnified 25 times

Transverse section of ovary  
magnified 5 times

Lo



Genus No.  
1319

Family  
Musaceae

***Musa paradisiaca* Linn.**  
**subsp. *sapientum* (Linn.) Ktze.**

Banana

*Probably originated in tropical southern Asia. Now extensively cultivated in tropical countries. Modelled from specimens obtained in Jamaica, 1892.*

H. Blaschke, 1903

Model 093



Fruit



# *Macromusophagy and Silent Blooms:* My Compositional and Collaborative Processes

- understand autophagy
- be inspired of each others' work
- Detroit Public TV, broadcasted on November 12, 2013  
<http://www.youtube.com/watch?v=iTI76Q76DLA>
- challenges on working collaboratively
- culmination:
  - two sold-out performances on June 8 and 9, 2013 with Ann Arbor Dance Works at the University of Michigan Museum of Natural History
  - past and forthcoming talks, performances, and publications