

Revised application deadline to 30 April 2019

CGEN 6903

Practicum I

(2.5 units)

Students are expected to meet the same whole conditions as a normal staff member. They will focus on identifying areas of interests and needs assessment. Towards the end of the module, students are required to submit a report that gives a programme in which they are to embark on for their stage two and stage three work.

CGEN 6904

Practicum II

(3.5 units)

Students are expected to meet the same whole conditions as a normal staff member. They are required to answer the practical logistics (e.g. teaming up, training material, time-table) in service initiation. They may have fine tuned to the actual service running. Towards the end of the module, students are required to submit a report on a final protocol for field work.

CGEN 6905

Practicum III

(3.5 units)

Students are expected to meet the same whole conditions as a normal staff member. They are required to report on the services/programme initiated. They are also expected to give implication of their work towards elderly care/end-of-life care and to suggest ways in implementation of the work towards wider population.

Schedule and venue

On average, the sessions of 2-3 hours will be held every Saturday morning or afternoon for all teaching modules. Classes will be held in the Prince of Wales Hospital.

Teaching Faculty

Staff from the Faculties of Medicine and Social Sciences of the Chinese University of Hong Kong, as well as the Hospital Authority. A small number of teachers are from other tertiary institutions.

Assessment

1. The taught components will be assessed by two written examinations in year 1.
2. The project report will be written up as a thesis and graded as follows:
 - a) For part time students, it is graded at the end of year 2
 - b) For full time students, it is graded at the end of year 1

Graduate attributes

Graduates are expected to acquire a good understanding of the biological, socioeconomic, epidemiological, and clinical aspects of ageing as well as end of life care issues. They are able to play a role in health care policy decisions regarding the well being of elderly populations, contribute to improvements and maintenance of good standards of care in diverse care settings.

Fees and application

The fees for the academic year (2019-20) are *HK\$65,250.00. Students are required to pay the fees in two academic terms per year.

For further enquiries, please contact us from 2 to 5 p.m. (Monday to Friday) at (852) 91687005 and visit our web site:

<http://www.mect.cuhk.edu.hk/postgraduate>



In order to protect the "green environment", online application is only applicable through <https://www.gs.cuhk.edu.hk/admissions/programme/medicine>.

Supporting documents should be sent to MSc in Clinical Gerontology and End-of-Life Care programme, 9/F Dept of Medicine & Therapeutics, Lui Che Woo Clinical Sciences Building, Prince of Wales Hospital, Shatin, NT.

The deadline for application will be 31 March 2019.

** pending for approval*

Information Seminar

Date : 22 March 2019 (Friday)

Time : 7:00p.m.

Venue: Seminar Room 1, 2/F., Lui Che Woo Clinical Sciences Building, Prince of Wales Hospital, Shatin, N.T., Hong Kong

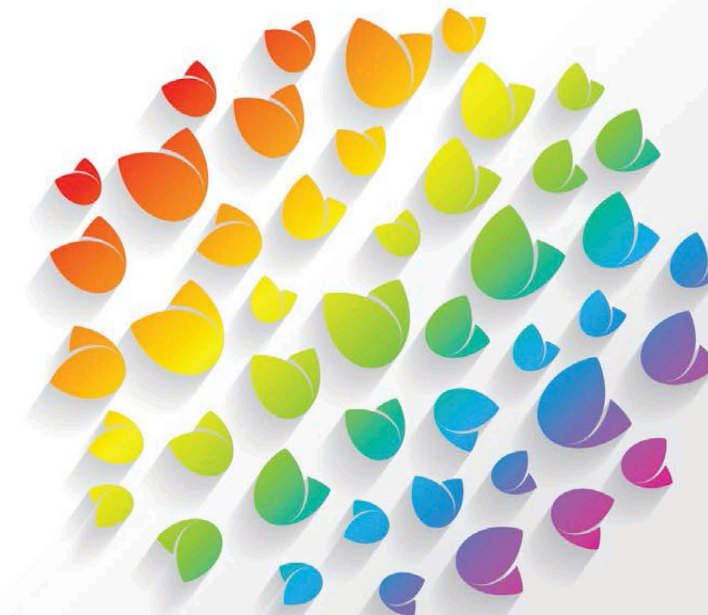
Please email to b133856@cuhk.edu.hk to reserve a place

New recruitment for part time students (2019-20)



Department of Medicine & Therapeutics, Faculty of Medicine
THE CHINESE UNIVERSITY OF HONG KONG

Master of Science in Clinical Gerontology and End-of-Life Care Programme



Programme Director

Professor Timothy Kwok

Co-Director(s) and Advisors

Professor Eliza Wong | Dr. Raymond Lo | Dr. CM Lum

Master of Science in Clinical Gerontology and End-of-Life Care Programme

Programme of study

To provide knowledge and training for professionals involved in the care of older people and in end-of-life care in diverse settings. The core programme covers a wide range of topics in biological, social, biological and clinical gerontology. It also covers service models for older people and palliative care, and ethical principles in elderly and end-of-life care. The optional programme in clinical gerontology will cover epidemiology, research methodology and clinical topics in geriatric medicine while the optional programme in end of life care will cover symptom control and medical care of people at end of life. The project and case studies will train the students in the application of knowledge and in the planning and execution of scientific enquiry or service improvement.

Programme of study

The course covers two years part time, three terms per year, and consists of 1) a taught component; 2) case studies; 3) practicum or project report.

For Part time students (will commence in 2019-20): Normative 2-year study programme

Year 1 Term 1 CGEN 5001 (1.0 unit), CGEN 5003 (1.0 unit)

Year 1 Term 2 CGEN 5004 (1.0 unit), ENLC 5001 (1.0 unit),
CGEN 6900 (2.5 units)

Year 1 Term 3 CGEN 5006 (1.0 unit), CGEN 5007 (0.5 unit),
electives: CGEN 5010 (1.0 unit),
CGEN 5012 (1.0 unit)

Year 2 Term 1 CGEN 6901 (3.5 units), CGEN 5202 (3.0 units),
CGEN 5204 (3.0 units), CGEN 6903 (2.5 units)

Year 2 Term 2 CGEN 6203 (3.0 units), CGEN 6205 (3.0 units),
CGEN 6904 (3.5 units)

Year 2 Term 3 CGEN 6902 (3.5 units), CGEN 6905 (3.5 units),
electives: CGEN 5011 (1.0 unit),
CGEN 5013 (1.0 unit)

Total: 29 units including elective courses of 2 units

Study programme with exemptions

for graduates of the Postgraduate Diploma in End-of-Life Care – 7 years of validity after graduation

Year 1 Term 1 CGEN 5001 (1.0 unit), CGEN 5003 (1.0 unit)

Year 1 Term 2 CGEN 5004 (1.0 unit), CGEN 5204 (3.0 units),
CGEN 6900 (2.5 units), CGEN 6901(3.5 units),
CGEN 6902 (3.5 units), CGEN 6903 (2.5 units),
CGEN 6904 (3.5 units), CGEN 6905 (3.5 units)

Year 1 Term 3 CGEN 5006 (1.0 unit), CGEN 5007 (0.5 unit),
electives: CGEN 5010 (1.0 unit)),
CGEN 5012 (1.0 unit)

Note: choose either CGEN 6903-05 (Practicum) or
CGEN 6900-02 (Project Report) at the beginning of
the study year.

Admission requirements

Students should hold a Bachelors degree in health or social sciences from a recognised university, normally with honours not lower than second class; or completed a course of study in a tertiary educational institution and obtained professional or similar qualifications equivalent to our honours degree. They must also fulfil the “English Language Proficiency Requirement” as stipulated by the Graduate School before being considered for admission.

Taught component:
contents 5.5 units (13 hours per unit), 6 modules

CGEN 5001 Demography, Sociology, Social Work and Health Economics and Psychology of ageing (1.0 unit)

This course will cover Demography (Basic concepts, Population dynamics and Population Ageing), Sociology and Social Work (Income maintenance, Living arrangement and social support, Family and intergenerational issues and Social inequalities in health) and Health economics (Health care financing and Estimating costs of diseases and disabilities).

CGEN 5003 Biology of Ageing & Concept of Successful Ageing and Measurement (1.0 unit)

This course will cover Biology of Ageing (Cellular ageing and theories of ageing, Age-related physiological changes and Cognitive changes related to ageing) and Successful ageing (Concepts and definitions, Existing knowledge, Strategies to achieve successful ageing and Health promotion).

CGEN 5004 Service Models for Ageing & Population (1.0 unit)

This course will cover Service providers and their interaction, primary, secondary and tertiary care sectors (community care residential homes, and hospitals), Design of living environments, Measuring the quality and outcomes of medical care, Population screening and the strategy of prevention, Elderly abuse and Palliative Medicine (Palliation, Bereavement, Living will, assisted death and euthanasia and Other ethical issues in the care of the elderly).

ENLC 5001 Principles and Perspectives of End of Life Care (1.0 unit)

This course includes an introduction to the overall concept of end of life care and their different perspectives.

CGEN 5006 Psychospiritual Aspects In Palliative Care (1.0 unit)

This course will cover psychological care, spiritual / existential care and bereavement support at end of life.

CGEN 5007 Ethical Principles and Dilemmas in End of Life Care (0.5 unit)

This course will cover ethical principles and communication skills in end of life.

Electives (total 2 units): The programme reserves the final decision right in launching course(s) of each term

CGEN 5010 Epidemiology and Research Methodology (1.0 unit)

This course will introduce the basic principles of using epidemiology in the study of the elderly, including basic statistical methods, commonly used parameters, applications to the study of health, autonomy and disability in elderly populations, population surveys and research methodology.

CGEN 5011 Clinical Topics in Geriatrics (1.0 unit)

This course will cover Common diseases in the elderly, Prescribing in the elderly, Nutrition, Rehabilitation, Quality of life measurement, Assessment (in the community; in institutions; psychological assessment tools). Cognitive deficits associated with age-related diseases and Psychogeriatric problems (dementia, depression and suicide in the elderly and other mental health problem).

CGEN 5012 Symptom Control and Medical Care in End of Life Care A (1.0 unit)

This course will cover principles in symptom and pain control in end of life.

CGEN 5013 Symptom Control and Medical Care in End of Life Care B (1.0 unit)

The course will cover other symptom control and palliative cancer therapy in end of life.

CGEN 5202 Case Studies I (3.0 units)

This course covers the whole spectrum of needs of the elderly from healthy ageing to end of life care or events. In this Case Studies I, students are required to write up on a case in which they have actively participated in promoting healthy ageing of the senior citizens, and reflection on what they have learnt and areas for improvement.

CGEN 5204 Case Studies II (3.0 units)

This course covers the whole spectrum of needs of the elderly from healthy ageing to end of life care or events. In this Case Studies II, students are required to write up on a case who has chronic disabilities and requires community support (service models). Students are expected to write on the special care needs of the elderly (and/or their informal caregivers), what have been offered to support the elderly to “Ageing in Place”. Students are also expected to give comments on possible limitations of current services and suggest areas for service improvement to meet the needs.

CGEN 6203 Case Studies III (3.0 units)

This course covers the whole spectrum of needs of the elderly from healthy ageing to end of life care or events. In this Case Studies III, students are required to write up on a case of the elderly who has multiple chronic illness and disabilities, and presents with physical problems. Students are expected to identify problems of the elderly through a multi-dimensional approach, formulation on what/why have happened, and the special care needs of the elderly. The Case Studies should also include personal reflection on what they have learnt from the case and possible areas for improvement if they come across similar case in the future.

CGEN 6205 Case Studies IV (3.0 units)

This course covers the whole spectrum of needs of the elderly from healthy ageing to end of life care or events. In this Case Studies IV, students are required to write up on a case of the elderly who presented with cognitive impairment. Students are expected to identify problems of the elderly in relation to his/her cognitive impairment, challenges to his/her informal care-givers and to suggest management with person-centered approach. The Case Studies should also include personal reflection on what they have learnt from the case and possible areas for improvement if they come across similar case in the future.

*Students can choose either CGEN6900-6902 OR CGEN6903-6905
at the beginning of the study year*

CGEN 6900 Project Report I (2.5 units)

This course covers the whole spectrum of needs of the elderly from healthy ageing to end of life care or events. In this Case Studies IV, students are required to write up on a case of the elderly who presented with cognitive impairment. Students are expected to identify problems of the elderly in relation to his/her cognitive impairment, challenges to his/her informal care-givers and to suggest management with person-centered approach. The Case Studies should also include personal reflection on what they have learnt from the case and possible areas for improvement if they come across similar case in the future.

CGEN 6901 Project Report II (3.5 units)

This will be carried out in any of the above areas under the supervision of course directors, during the one or two year period for full time/part time mode respectively. Students will spend a minimum of the equivalent of one contact hour per week with the supervisor. It is in stage two as an organisation, planning and implementation of the project monitoring course. Students are guided through specific research method which best suit to answer the research question in stage one. They may have piloted to make revisions to the protocol.

CGEN 6902 Project Report III (3.5 units)

This will be carried out in any of the above areas under the supervision of course directors, during the two year period for part time students and one year period for full time students. It is in the final stage as an implementation, result analysis and reporting of the project monitoring course. Students are expected to report on evaluation results on their own research question specified in CGEN6900. They will give implications of their work towards elderly care/end-of-life care and suggest way forward in research.