

CUHK Opens Beijing Liaison Office

The University has established a liaison office in Beijing to promote greater academic cooperation and organize more development strategies with universities on the mainland.

The liaison office, located in Peking University, was officially opened on 6th October. Officiating at the opening ceremony were Prof. Chen Jiaer, president of Peking University, Prof. Arthur K.C. Li, vice-chancellor of CUHK, and Mrs. Xie Weimin, division chief of the Hong Kong and Macau Affairs Office of the State Council.

The first tertiary institution in the territory to establish exchange relations with mainland academic institutions, the University has signed

exchange agreements with over 30 mainland universities and academic organizations. These include Peking University, Tsinghua University, Fudan University, Beijing Medical University, and the Chinese Academy of Sciences.

Some examples of existing collaborative projects are the establishment of a Joint Laboratory for Geoinformation Science with the Chinese Academy of Sciences, the establishment of the Shanghai-Hong Kong Joint Laboratory in Chemical Synthesis at the Shanghai Institute of Organic Chemistry, and the recruitment of, with assistance from Peking University and Fudan University, outstanding high school graduates from the mainland to enrol

in the University's first-degree programmes.

In the near future many more joint ventures will be launched. The new liaison office will play an important role in facilitating communication with various project partners, supplying up-to-date information about the University, and providing logistics support to CU members responsible for organizing such projects on the mainland.

Prof. Arthur K.C. Li, vice-chancellor of the University, addressing the gathering at the opening ceremony of CUHK's liaison office in Beijing



Prof. Yang Chen Ning Wins Onsager Prize

Prof. Yang Chen Ning was selected unanimously by the 1998 Onsager Prize Committee as this year's recipient of the coveted Onsager Prize in recognition of his contributions to statistical mechanics. The award will be presented to Prof. Yang at the centennial celebration of the American Physical Society (APS) in Atlanta next March.

Prof. Yang's contribution to physics is profound and far-reaching. His work with Prof. T.D. Lee on the non-conservation of parity in weak interactions leaves a permanent imprint on the symmetry principles in modern physics. His formulation with Robert Mills on the theory of non-Abelian gauge theories lays the foundation

for the unification of all interactions. His work on statistical mechanics and the theory of quantum fluid has led to novel quantum phenomena in macroscopic scales. Prof. Yang is currently Distinguished Professor-at-Large of the University.

The Onsager Prize is part of the APS Prize and Awards Program. Its purpose is to give recognition to outstanding research in theoretical statistical physics including the quantum fluids. It consists of US\$10,000 and a certificate citing the contribution made by the recipient. It was first presented in 1995 and has been awarded on an annual basis since 1997.

Music Teacher Selected as Outstanding Young Person 1998

Prof. Victor Chan Wai-kwong, associate professor in the Department of Music, was one of six recipients of the Outstanding Young Persons Award chosen from just over 50 nominations this year.

A composer and conductor, Prof. Chan is actively engaged in the promotion of modern music. He has performed extensively in local arts and music festivals and represented Hong Kong in international events. His compositions have

also been performed worldwide. He joined the Department of Music in 1989. He was appointed composer-in-residence of the Hong Kong Philharmonic Orchestra in 1997.

Candidates for the award are judged on their achievement in one of four categories — culture and art, entertainment, professional, and civic-social services. The awards ceremony will take place on 7th November at the Hong Kong Convention and Exhibition Centre.

Effort to Boost Religious and Ethics Teaching in HK Schools

The Department of Religion has launched its Programme for Strengthening the Teaching of Ethical, Civic, and Religious Education in Schools since the beginning of the 1998-99 academic year. Funded by the UGC, the programme aims at strengthening the relationship between schools and the University by providing direct support to the schools and their teachers in the teaching of these three closely related subjects. Letters have been sent to all secondary school principals and subject chairs and teachers concerned to invite their participation in three projects:

- (1) A survey on the teaching of ethical, civic and religious education (ECRE), the findings of which are expected to help focus the needs and difficulties faced by teachers and to provide the schools and teachers with the necessary resources.
- (2) ECRE outstanding teaching plan awards, which are intended as encouragement for outstanding ECRE teachers.
- (3) ECRE website (www.school.net.hk/~ecre), an on-line resource centre where ECRE teachers can share their experiences and exchange ideas. Technically supported by the Hong Kong School Net run by the University's Department of Information Engineering, the site is in an early stage of construction and testing.

Visits of Medical Professionals from the Mainland

A delegation of nine members from the Chinese Medical Association (Shanghai Branch), headed by Prof. Tai Yao, president of Shanghai Medical University, visited the University's Faculty of Medicine from 20th to 26th September.

They were given a tour of the Prince of Wales Hospital, the CUHK/WHO Collaborating Centre of Sports Medicine and Health Promotion in Union Hospital, as well as the Department of Community and Family Medicine in Lek Yuen Health Centre.

The delegation was highly interested in the combined use of Chinese and western medicine. They met with Prof. P.C. Leung, chair of the Planning Committee on the Chinese Medicine Programme, and paid a visit to the Chinese Medicinal Material Research Centre. They also participated in a seminar wherein they exchanged views with members of the faculty on their medical curriculum, teaching methodology, and future developments.

About three weeks later on 13th October, Prof. Xiaofu Hu and Prof. Huiming Tang from Shantou University Medical College also visited the Faculty of Medicine.

They were given a tour of the Shaw Endoscopy Centre and the Sir Pao Yue Kong Cancer Centre at the Prince of Wales Hospital and met with Prof. C.K. Lee, dean of the faculty,



The Shanghai delegation observing teaching at the Prince of Wales Hospital

Dr. Alison Reid, chief executive of the hospital, Prof. Dennis Lam, chair of the Department of Ophthalmology and Visual Sciences, Prof. P.C. Leung, professor of orthopaedics and traumatology, and Dr. W.L. Cheung, chief of service of the Accident and Emergency Department.

The visitors also attended a telemedicine conference linking up the faculty with the University of Southern California organized by Prof. M.N. Hjelm, coordinator of Area of Excellence in Telemedicine. Issues on further collaboration among the three universities were discussed during the conference.

Psychologist Gives Seminar on Behavioural and Communication Skills

Prof. Sanson-Fisher, dean of medicine at the University of Newcastle in Australia and a psychologist by training, gave two seminars respectively entitled 'Changing Behaviour in Primary Care' and 'Teaching Communication Skills' at New Asia College on 15th October in his capacity as Ming Yu visiting professor to the college. The first seminar was aimed at medical professionals and the second at teachers of behavioural skills for health professionals.

Prof. Sanson-Fisher communicating with seminar participants



Prof. Sanson-Fisher has developed a series of programmes to train medical students in communication skills. This includes examining their ability to talk to patients and convey information on a wide range of subjects, such as preventive medicine, taking medications, and operations they may undergo. He has also developed a programme teaching students to cope with and communicate matters of sexuality. Prof. Sanson-Fisher's research relates particularly to the application of preventive activities in community.

Prof. Sanson-Fisher also met members of the University's Faculty of Medicine during his visit.

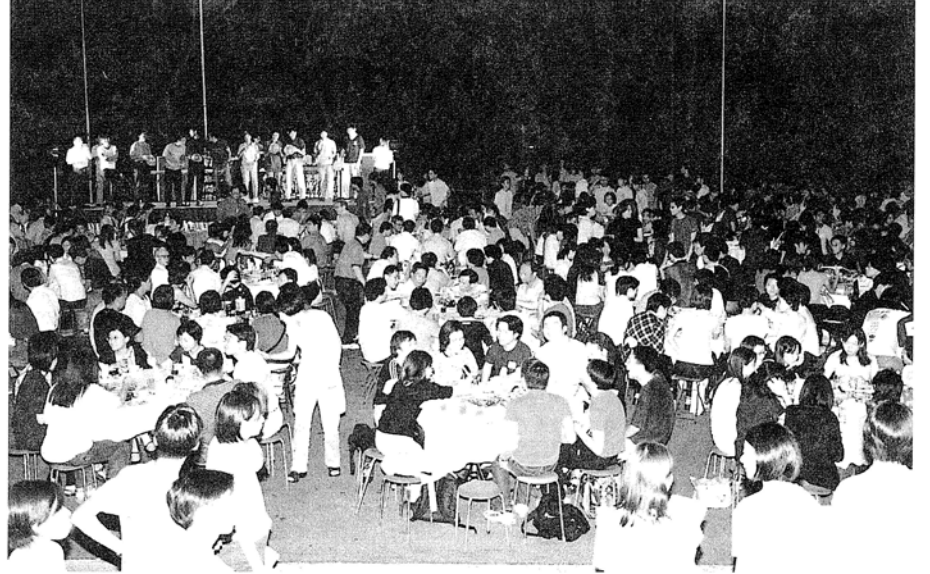
New Asia Approaching 50

In anticipation of its 50th anniversary next year, New Asia College adopted 'New Asia Approaching Her Golden Jubilee' as the theme of its 49th anniversary celebration in 1998.

A series of activities were launched in this regard including the round-the-campus

race, competitions for various college head trophies between staff and students, a speech competition, a scholarship presentation ceremony, and a tea reception. The famous feast for thousands and carnival drew celebrations to a close on 30th September.

Feast for thousands



The New Bursary — a Case of Challenges and Responses

舊貌換新顏

總務處重組，易名財務處

Background

In the last two years the Bursary faced unprecedented challenges, to which it responded with stupendous changes. The new Bursary that emerges has taken on a new management philosophy, organizational structure, and even nomenclature. It is leaner yet healthier, professional yet user-friendly, more effective in control and faster in response.

The New Bursary

New Management Philosophy

A new management philosophy is now enshrined in the Bursary's internal mission documents. The philosophy reflects the consensus of all levels of Bursary staff, as it evolved from a department-wide competition in search of a mission statement, and was modified in a management seminar participated by all senior Bursary staff. This new management philosophy is manifested in the following mission statement:

- To serve the business and financial management needs of the University community with the best endeavours in
- providing accurate, timely and high

standard financial management information;

- exercising a professional standard of skill, care, integrity and diligence;
- acting as a channel for free, efficient,

and effective communication;

- responding flexibly and proactively to the changing needs of the community.

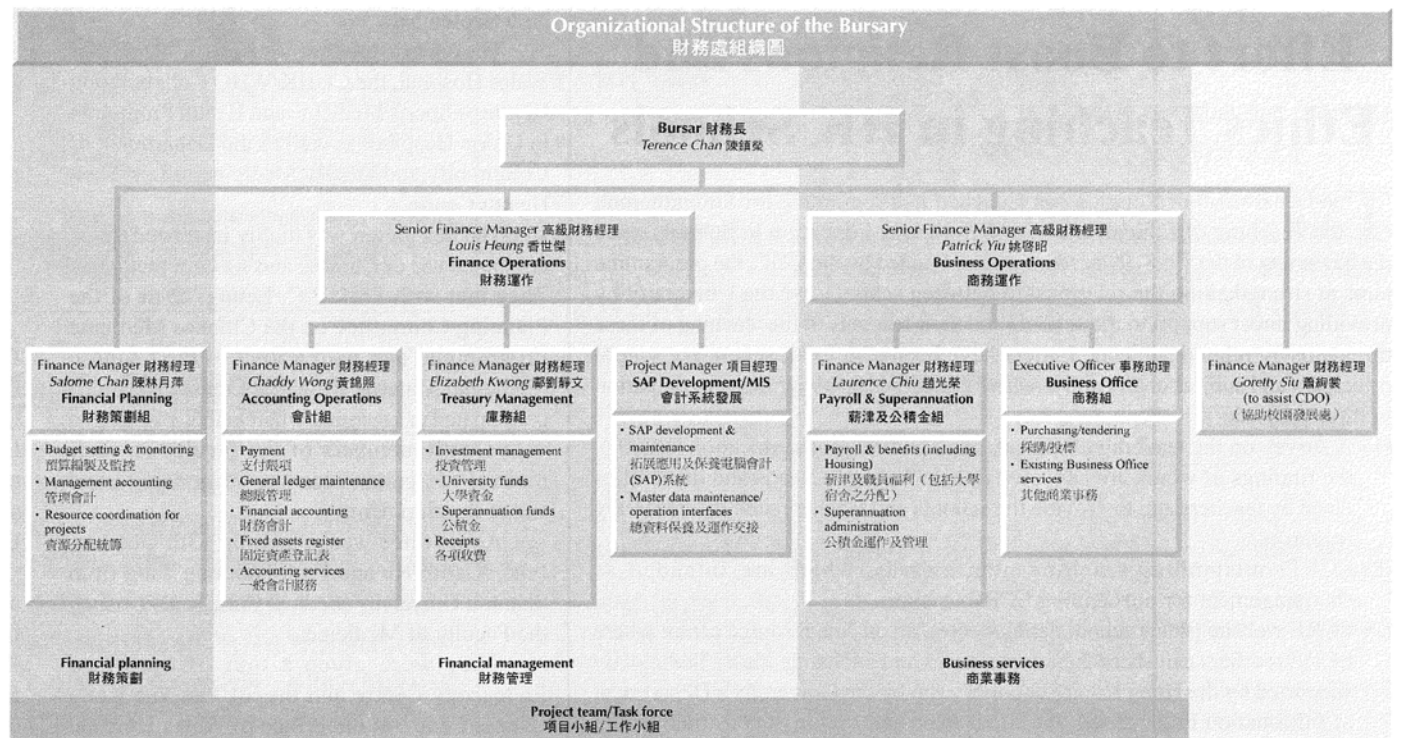
The perception is to change the Bursary from a passive accounting office to the proactive financial and business hub of the University. As a corollary, the structure of the Bursary was reorganized; a one-stop shop concept was introduced; performance pledges were set for each of the units of the Bursary; a homepage, periodic circulars, and briefing sessions were arranged to enable the University community to obtain most up-to-date data for planning and administration. This process of reengineering, introduced in late 1996 and 1997, reflected a vigorous soul-searching on the part of Bursary staff to meet the external and internal challenges besetting the Bursary.

New Organizational Structure

To complement the Bursary's self-

initiated reengineering process, a Management Efficiency Review (MER) of the Bursary was also conducted, principally by external management consultants, in late 1997 and early 1998. The MER commented favourably on the efficiency of the new Bursary, and suggested further measures to retrench costs and improve its organizational structure. As a result the Bursary has been broadly divided, with effect from 1st October 1998, into three main function streams, as shown in the table below.

This new organizational structure rationalizes the span of control and delineates more clearly the respective areas of responsibility. The Chinese name of the Bursary is also changed from 總務處 to 財務處 to reflect more appropriately the nature of the Bursary's work. Senior members are now entitled Senior Finance Manager (formerly Senior Assistant Bursar) and Finance Manager (formerly Assistant Bursar). The Bursar will



Service to the Community and International Organizations

- Prof. Richard M.W. Ho, registrar, has been appointed by the Secretary for Education and Manpower as a member of the Curriculum Development Council for a year from 1st September 1998.
- Prof. Leslie N.K. Lo, director of the Hong Kong Institute of Educational Research, has been re-appointed by the Secretary for Education and Manpower as a member of the Curriculum Development Council for a year from 1st September 1998.
- Prof. Tan Chee-beng, professor in the Department of Anthropology, has been appointed as honorary professor by the Faculty of Arts of The University of Hong Kong from 1st September 1998 to 31st August 1999, and by Huaqiao University in Quanzhou, Fujian.
- Prof. Michael Bond, professor of psychology, delivered his presentation at the seminar 'Women in Business Make a Difference' sponsored by the American Chamber of Commerce and the International Women's Forum on 17th September 1998 in Hong Kong.
- Prof. Yeung Yue-man, director of the Hong Kong Institute of Asia-Pacific Studies, has been appointed as a member of the International Eurasian Academy of Sciences from 28th June 1998.
- Prof. Sing Lee, associate professor in the Department of Psychiatry, has been invited by Excerpta Medica Communications, Reed Elsevier, to be a member of the Pfizer Psychiatry Advisory Board to plan educational projects for doctors in Asia from September 1998.
- Dr. Peter S.F. Chan, senior lecturer in the Department of Surgery, was awarded the Wu Jieping Medical Award for Urology 1998 by the Wu Jieping Medical Foundation for Urology, Beijing, on 4th September 1998 in recognition of his contribution to the development of urology and urological services.

(Information in this section is provided by the Information and Public Relations Office. Contributions should be sent direct to that office for registration and verification before publication.)

CU Press

New Book

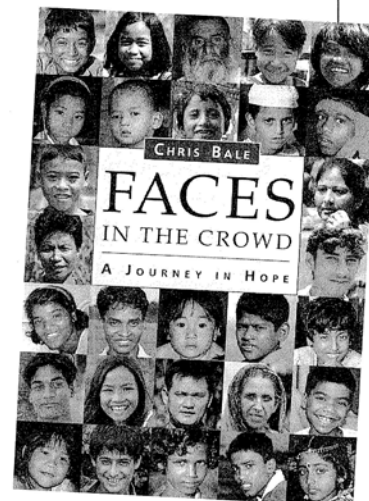
The following book is available to staff of the University at the University Bookstore, John Fulton Centre.

Faces in the Crowd is a moving story of the author's journey to search for people he met during 20 years of working with charities in Asia, people including a family of sugar workers, a well-meaning banker, a village woman, and a boy with leprosy.

The author Chris Bale lived and worked in Hong Kong for 20 years. He was director of Oxfam Hong Kong from 1984 to 1991, and was also for many years the senior news presenter for Asia Television's World Channel. He produced a number of award winning documentary films. In 1986 he was selected as one of Hong Kong's Ten Outstanding Young Persons and in 1996 was awarded the MBE for services to charity. He is now based in London as director of Befrienders International, the umbrella organization for the Samaritan movement worldwide.

Bale has waived his royalties on this book and for each copy sold, a sum of HK\$16 will be donated to Oxfam Hong Kong to support work with poor communities in Asia.

224 pages, 170 full colour photos, HK\$160



continue to carry the same English title and, subject to the necessary statutory amendments, will adopt the new Chinese title of 財務長.

Challenges

The challenges that confronted the Bursary in the last triennium included:

- (1) the reduction in government funding for the University;
- (2) the implementation of the New Funding Model, which revolutionized the financial *modus operandi* of the University;
- (3) the enactment of the Occupational Retirement Scheme Ordinance by the government, with far-reaching implications on the Superannuation Fund of the University;
- (4) the need to build up a decent financial reserve for the University, which has fallen to an alarmingly low level;
- (5) a heightened cost/saving awareness in the University community;
- (6) the expectations of clients, both outside and inside the University, for better and faster financial and business services;
- (7) the retirement of the long serving Bursar, thus the loss of his wealth of experience in University financial management dating back to the mid 1960s.

Changes

These challenges brought about the following responses from the Bursary:

- (1) changing leadership with the appointment of a new Bursar in October 1996;
- (2) restructuring of the Bursary to reset its focus and build up its team spirit;
- (3) introducing a process of reengineering to improve productivity, responsiveness, and service quality;
- (4) migrating to the SAP computer system to cope with the demands of a

new financial system;

- (5) conducting, with the help of outside consultants, an MER to retrench costs, right-size its establishment, improve its span of control, and reposition the Bursary in the University's administration hierarchy;
- (6) improving its communication with the university community to speed up the flow of financial information, and enable users to understand more readily the *modus operandi* of the Bursary.

Results

The results have been very encouraging.

Manpower Right-sizing

The total number of staff was reduced from 101 in October 1996 to 88 in 1998, representing a headcount as well as percentage reduction of 13 per cent. No compromise in service quality has been made throughout the right-sizing exercise.

Productivity Gains/Cost Savings

The measures introduced by the Bursary generated a total saving/additional income of \$5.3 million per year. The MER identified other cost savings of \$2.6 million. Thus the cost saving total of the Bursary in the period amounted to \$7.9 million per annum, or 21 per cent.

Increased Responsiveness and Timeliness

Over 99 per cent of invoices are cleared within one month upon receipt by the Bursary, whereas in the past this could take as long as three months. Superannuation fund investment performance, which hitherto was available on a quarterly basis, is now available through the Internet on a monthly basis. Annual accounts are now published in November, whilst previously

these were available in spring of the following year.

Enhancement in Service Quality

The service quality of the different units of the Bursary has been upgraded. For example, the tendering and procurement system received positive comments from the ICAC, which confirmed in a recent report that the Bursary had 'implemented an effective and efficient procurement system, including the establishment of a set of tightly controlled tendering procedures'. On financial planning and budgeting, the Bursary has forged a good partnership with various departments and offices to successfully implement the targets set by the RAC, culminating in the building up of a reserve of \$562 million by June 1998, as against a meagre \$11 million in the beginning of the 1995-98 triennium.

Increased Customer Focus and Cooperation with Other Offices

The Bursary is now more customer oriented. In 1997, nine half-day seminars were held with faculties and administrative offices to brief them on and discuss major aspects of the one-line budget, private fund operation, tendering procedures, and insurance issues. The participants responded positively. The increased cooperation of the Bursary with other administrative offices facilitates the successful implementation of important projects, such as the launching of the Home Financing Scheme (with the Personnel Office), and the relocation of staff to Residences 16 and 17 (with the Campus Development Office, CDO, and the Estates Management Office). In recognition of the substantial financial resources at the disposal of CDO, whose total construction portfolio stands at \$700 million, a well experienced Finance Manager has been assigned to CDO to work with its professionals to enhance its

financial management system and to reinforce the interface of financial information between CDO and the Bursary.

Encouraging Score in Benchmarking

The MER conducted by external management consultants confirms that the performance of the Bursary compares favourably with local and overseas tertiary institutions, e.g. in terms of the number of financial staff to students, and the number of staff to total expenditure. The Bursary excels in most quarters, except in a couple of areas where improvement can be expected in the near future due to the new measures being introduced.

Looking Ahead

The Bursary is fully appreciative of and thankful for the cooperation, support and understanding of other University departments and offices, which enable it to make modest improvements to its services. There is no room for complacency, for as the Chinese saying goes, 'a journey of a thousand miles starts with the first step' (千里之行, 始於足下). The Bursary has only begun the first step, and a lot more effort is required. Changes in the tertiary education arena, in aspirations of the community and in economic climate will make the forthcoming triennium a trying one, especially for financial management staff in the tertiary institutions. The Bursary hopes that, with a positive and communicative approach, and taking advantage of the cordial relationship it has established with the academic and administrative units, it can take on further improvements to meet the challenges of the tough days ahead. Bursary staff are reminded that when the going gets tough, only the tough gets going. ○

總務處重組及改名

總務處最近兩年開展了一連串業務重組措施，提倡新的管理哲學和組織架構，革新工作流程，最終既能精簡人手，又能節約經費，並且提高了服務效率和質素。為配合新的服務概念及職責，該處於十月一日起改名為財務處，總務長的職銜亦待大學條例修改後，改為財務長，相關的英文名稱則維持不變（詳情請參閱英文版第二及三頁的介紹）。

校園交通

University Traffic and Parking Regulations

新學年伊始，校園交通繁忙情況再現。較諸校外，校園路面衍生之意外顯著為少，惟傷亡代價則可能較高。

在校園駕車同人務須留意現行之《大學交通及泊車規則》，其權限悉如本港法例所容，概無厚薄；校園道路使用者擁有之權利，亦與校外人士無異，是以本組每接獲投訴時，有責依法辦理，無論事故為不小心駕駛或漠視過馬路守則，倘引致傷亡時，須將案件移交警方追究。借此籲請駕車者及行人：苟能略為小心及稍加忍讓，大學校園實為本港最安全之所。

最近施行之泊車收費制度，已可紓緩校園泊車苦況。至此，非交通要道之違例泊車尚可酌情容忍。惟保安組主任仍須確保校巴運行路線暢通無阻，凡違例停泊之車輛將遭扣押。

《大學交通及泊車規則》已於校園各入口處展示，並刊載於職員手冊及學生手冊，以便參閱，道路使用者宜細讀有關條款。

保安組主任

From the Security Officer:

Now that the new academic year for 1998-99 has started, campus life is turning vibrant with cars and commuters again. Although the incidence of traffic accidents on campus is phenomenally lower than that outside, costs in casualty terms may be higher.

Staff members who drive on campus must be aware that the University Traffic and Parking Regulations being in force carry no more and no less than the laws would allow. Within the University, drivers and commuters are subject to the same privileges and rights as any other road users may have outside. The University is therefore obliged by law to deal with cases such as careless driving and jay walking upon receipt of complaint, and if necessary may refer them to the police for further investigation as when injury is involved. May I therefore appeal to drivers and pedestrians alike: with a little extra care and patience, we can easily turn this campus into the safest place in Hong Kong.

The recently introduced fee-charging system has somewhat alleviated our congested parking conditions on campus and, in this respect, we are able to tolerate irregular parking off main thoroughfares only. The Security Officer is duty bound to ensure that University bus routes are free from obstructions and action will be taken against illegal parking in areas where warning signs are clearly erected.

For those who are new to the environment, the University Traffic and Parking Regulations are conspicuously posted at all entrances to the campus and published in both staff and student handbooks of the University and its colleges. It is the duty of all road users to familiarize themselves with the laws and regulations.

ULS Online Lectures

The University Library System (ULS) has a new addition to its electronic resources. Online Lectures can now be accessed direct through its homepage (<http://www.lib.cuhk.edu.hk/eow> or <http://www.dcreation.com/hkcu/v4/oL1.htm>).

Online Lectures is the latest addition to a digital library named 'Eye on the World' which collects quality Internet resources on various areas of general interest to the University community. Beginning with News Online, it now includes Publishers Online, Journal Online, Bookstores Online, and Online Lectures.

Online lectures are often interactive in approach, making use of the multimedia educational resources available on the worldwide web and providing students with channels to raise questions and submit assignments online. A few distinctive websites are selected to give users a more comprehensive and systematic overview of the courses available worldwide. More links will be added. Suggestions for new sites are most welcome.

Enquiries and suggestions can be directed to Mrs. Rita Wong, head of Systems and Communications Division of the ULS (E-mail: rita-wong@cuhk.edu.hk, or tel: 2609 7316).

宣布事項 ANNOUNCEMENTS

公積金計劃投資成績

Investment Returns of Staff Superannuation Schemes

財務處公布公積金計劃內各項投資基金於一九九八年九月及累積至該月的回報如下：

From the Bursary:

The monthly and cumulative returns for September 1998 in the Designated Investment Funds of the 1995 Scheme and 1983 Scheme are as follows:

一九九八年九月 September 1998

| 基金 Fund | 1995 計劃 1995 Scheme | 1983 計劃 1983 Scheme | 指標回報 Benchmark Return |
|-------------------|------------------------|------------------------|-----------------------------|
| | (未經審核數據 unaudited) | | |
| 增長 Growth | 1.96% | 1.58% | 4.72% |
| 平衡 Balanced | 2.42% | 2.27% | 4.50% |
| 穩定 Stable | 2.97% | 2.06% | 4.31% |
| 港元銀行存款 | 0.80% | 0.74% | 0.59% |
| HKD Bank Deposit | (年息 Annualized 9.75%) | (年息 Annualized 8.97%) | (年息 Annualized 7.18%) |
| 美元銀行存款 | 0.40% | 0.41% | — |
| USD Bank Deposit* | (年息 Annualized 5.16%) | (年息 Annualized 5.22%) | — |

一九九八年七月一日至九月三十日 1st July to 30th September 1998

| 基金 Fund | 1995 計劃 1995 Scheme | 1983 計劃 1983 Scheme | 指標回報 Benchmark Return |
|-------------------|------------------------|------------------------|-----------------------------|
| | (未經審核數據 unaudited) | | |
| 增長 Growth | -6.28% | -7.40% | -8.44% |
| 平衡 Balanced | -3.80% | -4.47% | -5.03% |
| 穩定 Stable | 1.81% | 1.45% | 1.95% |
| 港元銀行存款 | 2.35% | 2.35% | 2.22% |
| HKD Bank Deposit | (年息 Annualized 9.32%) | (年息 Annualized 9.32%) | (年息 Annualized 8.81%) |
| 美元銀行存款 | 0.40% | 0.41% | — |
| USD Bank Deposit* | (年息 Annualized 5.16%) | (年息 Annualized 5.22%) | — |

* 一九九八年九月一日開始投資 Launched with effect from 1st September 1998

學生及教職員健身課程

體育部主持的「身心康泰在中大」活動之學生及教職員健身課程，將於本年十二月至明年四月舉行，為員生介紹健身器材的正確使用方法，以及重量訓練的概念與方法。修畢課程的學員可獲發「大學健身室使用證」乙張。由本年九月一日開始，凡未持有「大學健身室使用證」者皆不准使用大學健身室，以確保使用者的安全並減少健身室器材損壞的機會。

| 課程編號 | 日期 | 時間 | 對象 |
|--------|-------------------------------|------------|--------|
| F1/98* | 30.11.98-11.12.98 (逢一、三、五) | 下午五時半至七時半 | 教職員及學生 |
| 5/98 | 4.12.98 (星期五) | 下午五時半至七時半 | 教職員 |
| 6/98 | 15.12.98 (星期二) | 下午四時至六時 | 學生 |
| 7/98 | 18.12.98 (星期五) | 上午十時至中午十二時 | 學生 |
| 1/99 | 8.1.99 (星期五) | 下午五時半至七時半 | 教職員 |
| 2/99 | 4.2.99 (星期四) | 下午五時半至七時半 | 學生 |
| 3/99 | 3.3.99 (星期三) | 下午六時半至八時半 | 學生 |
| 4/99 | 9.4.99 (星期五) | 下午五時半至七時半 | 教職員 |

*F1/98 為「個人健體計劃」，共六堂。

上課地點：大學健身室

名額：每班二十人，按報名先後錄取。

費用：港幣十元

報名：親臨大學體育中心收借處辦理，並繳交費用及近照（兩吋乘兩吋半）乙張。

查詢請致電阮伯仁先生，電話二六零九六九八五或二六零九六零九七。

中大通訊 CUHK NEWSLETTER

網址 website <http://www.cuhk.edu.hk/puo/>

- 本刊逢四日及十九日出版。
- 來函或投稿請寄沙田香港中文大學秘書處出版事務處《中大通訊》編輯部（電話 2609 8584，圖文傳真 2603 6864，電子郵遞 pub2@uab.msmail.cuhk.edu.hk）。
- 投稿者須附真實姓名、地址及聯絡電話，文章則可用筆名發表。
- 編輯有權刪改及決定是否刊登來稿，不欲稿件被刪者請預先聲明。
- 本刊所載文章只反映作者之觀點和意見，並不代表校方或本刊立場。
- 所有內容未經編者書面准許，不得轉載。
- 本刊每期發行三千八百份，免費供校內教職員索閱，部分郵寄本地教育機構及與大學有關人士。私人索閱，請致函本刊查詢。

- The Newsletter is published on the 4th and 19th of each month.
- All contributions and suggestions should be sent to the Editor, CUHK Newsletter, Publication Office, University Secretariat, The Chinese University of Hong Kong (tel. 2609 8584; fax. 2603 6864; e-mail pub2@uab.msmail.cuhk.edu.hk).
- Contributions should bear the writer's name and contact telephone number, and may be published under pseudonyms. No anonymous letters will be published.
- The Editor reserves the right to reject contributions and to edit all articles without notice for reasons of clarity, length or grammar. Those who do not want to have their articles amended should indicate clearly in writing.
- The views expressed in the CUHK Newsletter are those of the authors, and are not necessarily those of the University or the Editor.
- No part of this newsletter may be reproduced without the written consent of the Editor.
- This publication has a circulation of 3,800 and is primarily intended for staff members of CUHK. Copies are also sent to local educational institutions and individuals associated with the University. Those who wish to be included on the mailing list please contact the Newsletter direct.

截稿日期

Deadlines for Contributions

| 期數 Issue no. | 出版日期 Issue date | 截稿日期 Deadline for contributions |
|-----------------|--------------------|------------------------------------|
| 135 | 19.11.98 | 2.11.98 |
| 136 | 4.12.98 | 17.11.98 |
| 137 | 19.12.98 | 2.12.98 |
| 138 | 4.1.99 | 15.12.98 |
| 139 | 19.1.99 | 4.1.99 |
| 140 | 4.2.99 | 18.1.99 |
| 141 | 4.3.99 | 10.2.99 |
| 142 | 19.3.99 | 3.3.99 |
| 143 | 4.4.99 | 17.3.99 |
| 144 | 19.4.99 | 30.3.99 |

新任系主任談學系發展(二)

宗教系

吳梓明教授

「領導同事團結一致，建造共同目標，共創美好明天，為中大、為香港，以至為中國提供優質的宗教教研及教學。」這是宗教系新任系主任吳梓明教授的工作目標。

吳教授是宗教系舊生，在母校任教已十三年。他獲悉新任命後，即與同事磋商宗教系未來的發展方向。中大於一九六五年成立宗哲系，七八年正式成立宗教系，是各地華人公立大學中歷史最悠久的宗教教學系；比台灣輔仁大學及北京大學的宗教學系都成立得早。大家都認為，中大宗教系有著鞏固的基礎，可以繼續發揮所長，協助香港、內地及海外華人大學提高宗教學的教研及教學質素。

吳教授表示，該系近年積極與內地大學建立聯繫，曾先後與北京大學、北京師範大學、上海復旦大學、武漢華中師範大學、四川大學、浙江大學、福建師範大學及韶關大學開展學術交流，活動包括互訪、研討會，和合作研究等，又計劃聯合出版期刊。自三年前起，該系接納內地學生入讀研究院課程，首位內地博士生將於明年畢業。

吳教授又透露，系方計劃集中資源，發展中國宗教及中國基督教研究，糾正中國被批評為沒有宗教，只有習俗與迷信的謬誤。「前任系主任歐大年教授是中國宗教研究的權威學者，同事經他引導，逐漸了解到中國宗教研究的重要性，並開拓了新的研究路向。」

他續說：「至於中國基督教研究方面，以往學者多是從傳教士的資料及角度出發，未來的研究應加強發掘中國保存的資料，並從中國教會及信徒的角度開展有關研究。」

吳教授表示，由於該系學生人數較少，獲撥資源已是有限，政府若再削減大學經費，對基本行政與其他規模較小的學系來說，實在是一大傷害。但他補充說：「現在只好盡力開源吧。幸好兩年來我們提交的研究計劃獲研究資助局及大學撥款，遂得以在去年聘請三位博士後研究員及一位研究助理，加強了學系的研究力量。研究資助局今年又再撥款六十多萬元，支持我們開展中學宗教、公民及倫理教學支援計劃，而校方又批准本學系於明年九月開設自負盈虧的宗教學文學碩士學位課程，可資挹注。」

生理學系

譚兆祥教授

生理學系主任譚兆祥教授說：「我們已做好準備，應付政府削減撥款的行動。」

譚教授自去年一月起出任生理學系署理系主任後，便針對政府的資源緊縮政策，從單項預算撥款中預留款項，避免學系的發展受到影響，並有餘力改善學系的科研活動和設備。

他解釋：「本系編制共有十五名教師，我採用自然流失而不補充的方法，凍結了兩個教席，而由各同事分擔多一些教學工作。結果有充裕資金添置新儀器，又可聘請訪問學人。」

譚教授是生理學系創系教師之中唯一仍然留校服務的。他透徹了解學系的過去，未來他會致力創造優良的科研環境，鼓勵同事積極申請研究經費，並繼續改善學系的教學質素。

生理學系創立於一九八一年，八十年代中期起佔用基本醫學大樓三樓半層；由於醫科新生從八一年首批共六十名，逐漸增至去年約一百七十名，生理學系的地方早已不敷應用。動物飼養室（現改名為實驗動物中心）去年杪遷離基本醫學大樓後，生理學系獲撥約五成辦公面積。譚教授說，裝修工程完成後，所有教師都會有標準的辦公室和實驗室，又可使用學系新設立的專門實驗室和其中價值數百萬元的儀器，教研條件將大為改善。

教研成果無可置疑是衡量學系表現優劣的重要因素。譚教授表示，研究成績和研究生學術水準在該系來說是較易稽核的，近年表現也十分出眾。可是，由於生理學系沒有直屬的本科生，只好倚賴醫學院主持的科目檢討，了解醫科、藥劑、護理和人類生物學（乃至將來中醫學）的學生對該系教學的意見，「總括來說，評價良好。」譚教授去年更獲醫科生選為最佳醫學教師之一。由本學年起，他

（例如收錄和分配研究生的方法）以作改善。他當署理系主任年餘，已設立了不少制度，今年的目標是使系務更加制度化，和改進各種現有規章。

地理系

梁怡教授

「地理系的一貫策略是吸引高質素的學生入讀。」梁怡教授說。為此，該系會主動聯絡中學，並舉辦開放日及研討會，讓中學生明白地理學不只是談天氣，說山水的形成，尚包括利用現代科技資訊作城市規劃、環境保護、資源分配，甚至災害的預防和撲滅，應用範圍廣泛。他補充說：「為增進外界對地理學的認識，學系會不時舉辦各類普及與專業活動。我們曾於五月和六月舉辦工作坊及研討會，前者專為中學生而設，以認識當代地理學為主題，既有講解、實驗練習，更有野外考察，學生反應很好。至於研討會，除供各地學者和專業人士交流地理訊息系統的發展方向及應用，亦有公開展覽，展示最新的地理資訊科技，以及我們的研究成果，廣邀中學教師及學生參觀。」該系還印製了小冊子，寄往本地及外國重點大學，推介研究院課程。

科研方面，梁教授會推動地理系集中開展環境、地理訊息科學，以及城市與區域規劃的研究，並以取得傑出成果為目標，使人們只要提及有關研究，便立即聯想到中文大學地理系。梁教授並期望將來能落實兩三項國際合作研究計劃。

由於該系過往未有充分發揮校友資源，梁教授準備積極籌建舊生網絡，邀請他們支持及參與系內活動，並與在校學生分享專業知識及社會經驗。

梁教授表示，學系在資源緊縮的影響下，除節流外，希望也能開源。他正考慮成立顧問單位，為外界提供地理環境顧問服務，以增加學系的收入；而節流的方針是精簡行政架構，請教師多付出一分力。梁教授強調，學系發展要依靠同事互相合作，「希望大家除注重教研工作外，更能積極參與系務及社會服務。」

決策科學與企業經濟學系

李天生教授

「決策科學與企業經濟學系的目標很明確，就是要以有限資源開展研究，並把課程辦得更好，重點發展研究院課程。」李天生教授說。

李教授認為開設新的研究課程，可給學生提供進修機會，更可培養資優研究生，協助發展系內的研究。

該系今學年一口氣開辦了三個新課程：資訊與品質管理文憑課程、企業經濟學碩士學位課程，以及資訊與科技管理理學碩士學位課程。

對於學系經費被削減，李教授說：「當然對學系的發展會造成困難，但是我們要接受挑戰。今年我們開辦了上述三個新課程，一定會努力辦得成功，為學校和社會服務，希望將來能爭取到應得的資源。此外，我們希望可善用本身的專長，即決策和經濟分析，加上企業流程再造，來全面檢討學系的目標和工作，希望能有更好的教學、研究和服務成果。」

李教授對該系未來發展充滿信心，因為今年破紀錄地有三十五名工商管理學院本科生選擇決策科學與企業經濟學為專修科，而九八年度該系三項研究計劃取得研究資助局撥款，是豐收的一年。他又透露，該系於六月成立了貿易與產業研究中心，運用過去十多年間校外管理培訓服務所得，資助同人申請大型研究計劃或開展較小規模的研究項目。

李教授曾在美國鹽湖城猶他大學商學院管理學系擔任系主任，他坦言：「系主任工作絕不簡單，我會盡力為同事及大學服務，以公平、公正、公開的原則處事，並加強校方與教師的溝通。」

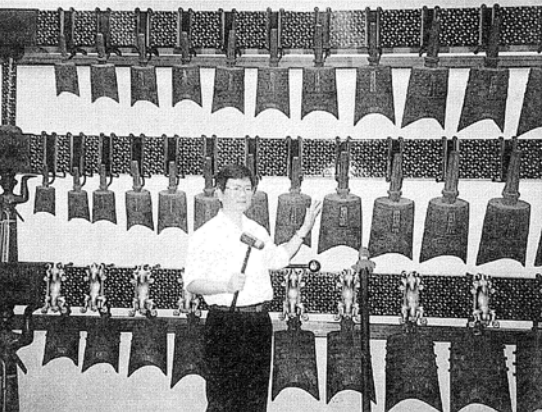
蔡世彬 陳偉珠



在學系午餐雙週會加入教學心得環節，希望更進一步提升該系的教學水平。

譚教授表示，除了主持教研和系務以外，他還擔任逸夫書院輔導主任，工作量大，一定要善用時間，才能把各樣事情做好。他的管理心得是下放權力和建立制度。權責下放既可增強教師以至技術員對系務的參與感，也讓系主任有空閒思索系務行政不足之處，並建立各種機制和指引

音樂系購仿曾侯乙編鐘



崔憲博士講解編鐘的奧秘，背景為音樂系最近添置的仿曾侯乙編鐘。

音樂系最近購置了一套三十六枚的編鐘，並特別邀請北京中國藝術研究院音樂研究所研究員崔憲博

士，於十月十二日在許讓成樓LG01排練室主講「曾侯乙編鐘的奧秘」。

該套編鐘由湖北省湖北白雲古典藝術研究所設計，以一九七八年出土的戰國曾侯乙編鐘（六十五枚）為藍本，按原來的音律及體制減省為三十六枚。音樂系購置該套編鐘主要作研究及教學用途，亦可用作演奏。惟該套編鐘之音律，與今日的十二平均律不同。

崔憲博士為已故黃翔鵬先生的高足，精研中國編鐘多年，近作《曾侯乙編鐘鐘銘校鐸及其律學研究》更為學界所推崇。

社會科學院嘉獎優秀學生

社會科學院上月二十四日在何添樓B6室舉行院長榮譽錄暨優異新生頒獎典禮，表揚成績優

異的二、三年級學生，以及公開試成績卓越的新生。嘉賓之中包括這些新生的中學師長。

陳黃穗女士頒發證書予優秀學生



社會科學院院長周健林教授在典禮上致辭時表示，設立這些獎譽除表揚學生的勤奮努力外，更重要是讓學生知道該院重視學生的學業。

消費者委員會總幹事陳黃穗女士出任典禮嘉賓，並與李國章校長一起頒發院長榮譽錄證書予平均積點為三點六或以上的學生；社會科學院新生入學委員會主席鄺啟新教授則頒發書券予優異新生所屬中學的老師代表。

新亞邁向五十周年



新亞書院明年紀念創校五十周年，今年的校慶特以「新亞邁向五十周年」為主題，開展一連串慶祝活動，包括師生環校跑、歷任院長盃師生比賽、演講比賽、校慶暨獎學金頒獎典禮、校友教職員茶會，以及筵開一百二十五席的千人宴。

新亞書院院長梁秉中教授（中）與該院校董葉永生先生（右）及校友李金鐘先生（左）主持校慶茶會切蛋糕儀式

中大藝術節九八

藝術系系會上月舉辦「中大藝術節」，活動包括寫生、書法及繪畫比賽、書展、街頭表演和電影欣賞等。圖為文學院院長郭少棠教授頒獎予一名冠軍得主梁家琪。



Personalia · 人事動態 · Personalia · 人事動態 · Personalia · 人事動態 · Personalia · 人事動態 · Personalia

Information in this section can only be accessed with [CWEM password](#).

若要瀏覽本部分的資料，
請須輸入 [中大校園電子郵件密碼](#)。

香港對廿一世紀中國人之意義



兩岸三地五十多位知名學者上月廿二至廿四日匯聚大學行政樓祖堯堂，參加「香港對二十一世紀中國人之意義：人文與社會的觀察」學術研討會，

回顧香港回歸的歷史意義，展望未來華人世界的社會、經濟和文化發展，並探討二十一世紀的世界秩序。

研討會由本校、北京中國社會科學院和台北中流文教基金會聯合主辦，設有八個主題，每個主題都由內地、台灣和香港各一名學者作專題報告。探討的題目有香港歷史與回歸的意義、香港與中國的現代化、香港與中國大陸的改革開放、香港在兩岸關係中的作用、中國人與二十一世紀的經濟社會發展、二十一世紀的文化發展、中國人與二十一世紀的文明衝突、中國人與二十一世紀的世界秩序。最後的半天會議則是綜合座談，由中國社會科學院副院長汝信教授、中央研究院副院長楊國樞教授和本校署理校長金耀基教授作總結報告。

與內地醫學人員交流

汕大訪問醫學院

汕頭大學醫學院院長徐小虎教授及附一院顧問唐慧明教授上月十三日到訪本校醫學院，並參觀了教學醫院威爾斯親王醫院，包括逸夫內鏡中心及包玉剛爵士癌病中心。

他們與李川軍教授（醫學院院長）、艾莉德醫生（威院院長）、林順潮教授（眼科及視覺科學系系主任）、梁秉中教授（矯形外科及創傷學講座教授）及張偉麟醫生（急症室主管）會晤詳談。本校遠程醫療

召集人楊孟思教授還特別為徐教授和唐教授安排了一小時的遠程醫療會議，與美國南加州大學討論三校未來合作的事宜。

港滬醫學教育專家交流

上海市醫學會醫學教育學會代表團一行九人，由團長上海醫科大學校長姚泰教授率領，於九月二十至二十六日訪問本校醫學院，參觀了威爾斯親王醫院多個部門，以及醫學院設於仁安醫院的世界衛生組織運動醫學暨促進健康中心，和位於瀝源健康院的社區及家庭醫學系。

訪問團對中西醫藥合璧的課題很感興趣，除參觀中藥研究中心外，並與中醫學士課程籌備委員會主席梁秉中教授會晤，又跟本校教師座談，就醫學課程內容、教學特色、課程及學生評估、未來發展及改革等範疇交換了意見。

上海市醫學會醫學教育學會代表團參觀癌症中心的兒童病房



企業領袖看香港經濟

決策科學與企業經濟學系貿易與產業研究中心段樵教授和伍鳳儀教授，在七月下旬以問卷調查企業領袖對香港遭受亞洲金融風暴後的看法。調查結果摘要如下：

- 企業界一般對政治架構中增加民選成分持正面態度，但普遍預期政府的行政效率會因而降低。
- 多數企業負責人都相信政府已加強了在經濟上的參與，近八成人更認為政府的金融政策是漸趨積極干預。
- 大多數企業負責人認為本區經濟最少需時兩年方可從衰退中恢復過來；而他們並不十分看好政府兩次「救市」的短期（一年內）效果。
- 「保持聯繫匯率，但重訂匯率」被最多受訪者（佔總數三成半）認為是未來一年之中，最有可能實施的聯繫匯率。

- 在估計聯繫匯率受壓與預測聯繫匯率前景時，受訪者根據的主要指標依次為港元同業拆息率、港元遠期匯率和流動資金調節機制中的銀行結存額。此次序大概反映了目前港匯的問題，是出於外資炒作衝擊，基本經濟因素只屬次要。
- 他們對一年後（一九九九年）主要行業的推測，是看淡零售業、酒店、賓館、本地製造出口、旅遊、房地產買賣，以及餐飲業；至於離岸貿易與珠三角製造出口則最不受影響。

段樵教授對調查結果有以下結論：在長期發展策略上，香港未來的持續發展須與鄰近珠三角地區協作，並從港珠都會經濟體的角度來討論香港的經濟問題。香港早已不是一個獨立的經濟個體，過去十年經濟的成長是在此一格局下達至，而未來亦應按此發展。終究，再復興香港的製造業，已略嫌太遲。

香港工業發展之前景



左起：蔣麗芸女士、楊汝萬教授、宋恩榮教授、周健林教授、李鵬飛先生

社會科學院和香港亞太研究所上月二十一日在大學行政樓祖堯堂舉辦公政策論壇之「香港工業發展之前景」，由經濟學系鄭啟新教授及社會學系趙永佳教授主持，出席講者包括震雄集團有限公司董事蔣麗芸女士、自由黨主席李鵬飛先生及本校經濟學系系主任宋恩榮教授。

社會科學院及香港亞太研究所會議前兩天公布「市民對香港工業發展的態度」調查報告，顯示香港市民絕大部分支持政府加強扶掖製造業，但對於應否以公帑支持製造業則有明顯分歧。

趙永佳教授表示，八成八受訪者同意或非常同意「振興製造業有助香港的長遠經濟發展」，因為製造業能穩定香港的經濟，抵擋外來的衝擊。六成多的人認為，香港製造業收縮是由於政府沒有給予支持。不過，亦有六成的市民明白製造業收縮是大趨勢，政府未必可以完全阻止。

市民普遍支持政府援助製造

業的發展，絕大部分受訪者（八成八）贊成政府出資扶助製造業。四成六受訪者同意「政府以公帑支持製造業發展是對其他行業不公平」的看法，但不同意的也有四成五。

鄭啟新教授則表示，政府應在政策上配合，而非花費大量公帑資助製造業的發展，更不應側重發展狹義的製造業。現在的服務業和製造業界線模糊，如軟件開發便很難界定是屬於製造業或服務業。香港其實要善用珠江三角洲的廉價勞工發展高增值工業。

他認為台灣的成功，就是大批在外國留學的人才回流，而港府引入外地專才發展新興製造業，不一定會推高失業率。他分析說，對失業最感憂慮的是四十多歲而技術水平和學歷低的製造業工人。參照美國矽谷的經驗，只要新興製造業發展成功，便可帶動其他服務業，讓這些學識水平較低的工人就業。

宗教系開展新支援計劃 推廣倫理公民宗教教育

宗教系獲研究資助局撥款六十餘萬元，開展「學校倫理、公民及宗教教育促進計劃」，直接支援中學教師在校內推動這方面的教育。

計劃內容包括問卷調查、教學網頁、獎勵優質教案、在職教師短期進修課程和價值與人生嘉年華。

宗教系系主任吳梓明教授在上月十四日向記者表示，他們要證明優質教育及資訊科技並非文、理科目的專利，也可應用於倫理、公民及宗教科目之上。

他說，政府雖然大力提倡通識教育，但對倫理、公民及宗教教育仍有不足之處。他希望該計劃能促使這些科目在中學受到應有的重視，並增進學生在有關領域的認知。

問卷調查的目的，是要找出現時在學校推行該等科目的困難，從而擬定解決辦法。

教學網頁則會由訊息工程學系「香港學校網絡」協助設立，有關科目的教師將可在這個網上的教學資源中心取得各種資源，並交流和分享教學心得。

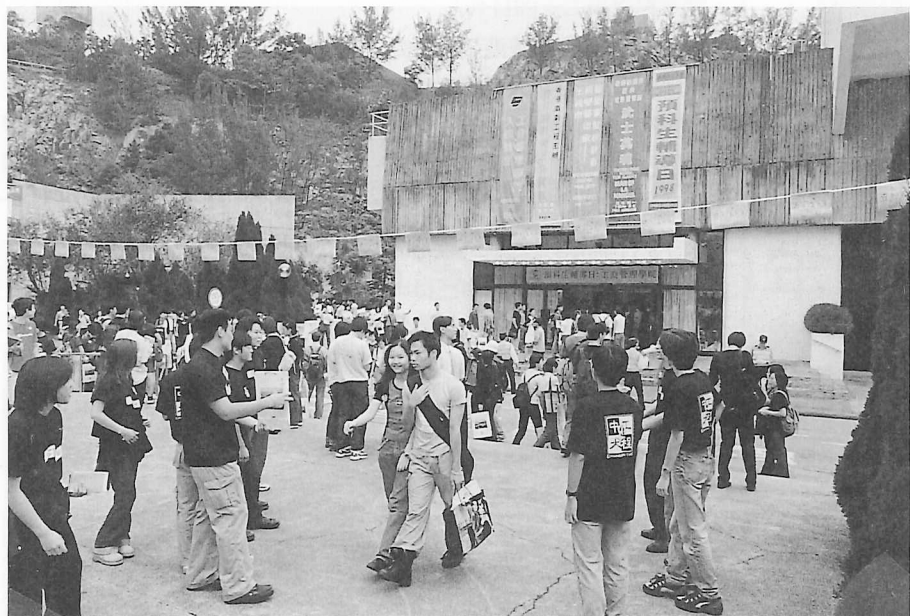
優質教案獎勵計劃則為表揚和鼓勵在倫理、公民及宗教科教學有傑出表現的教師，加強教師的交流和觀摩。優勝作品將會結集成書。

明年中舉辦的在職教師短期進修班，內容針對兩個公開試課程，專供任教有關科目的高中教師參加。

價值與人生嘉年華除設攤位遊戲外，更會展出有關書籍和教材。



預科生輔導日吸引逾萬中學師生



預科生輔導日氣氛熱烈

校方上月十日舉行預科生輔導日，向預科生、家長及中學教師介紹本校的課程，教學特色及校園設施，參觀人數約一萬二千。

七個學院六十個學系當日舉辦連串活動，包括大型展覽、入學輔導講座、課程簡介、實驗室參觀及示範。醫學院特別安排專車接載預科生參觀威爾斯親王醫院的運作。

李國章校長率領大學高層會見中學校長和教師



另外，成員書院的體育康樂設施和學生宿舍、大學圖書館、電算機服務中心等均開放予訪客參觀。

「輔導日專題講座」除由大學輔導長郭少棠教授和副教務長李樹榮先生分別介紹中大的設施、服務和活動，以及輔導日的活動外，更邀請校友陳永華教授和李德誠醫生，以及多名中大學生分享他們在中大的生活點滴。入學組高級主任楊元富先生主持「課程及入學講座」，詳細說明本校的入學要求和各項課程的收生標準。而「讀書樂講座」則由「香港學校網絡」創辦人黃寶財教授、教務長何文匯教授，和眼科及視覺科學系系主任林順潮教授主講。

李國章校長亦首次於輔導日邀請中學校長和教師蒞校聚會，向他們介紹本校的收生狀況，最新發展，以及即將開辦的新課程，包括酒店管理學及中醫藥課程。

陳偉光教授當選傑青

音樂系陳偉光教授當選一九九八年十大傑出青年。

陳教授是活躍的作曲家兼指揮家，積極推廣現代音樂，更屢次代表香港在國際音樂盛會中演出，去年獲委任為香港管弦樂團駐團作曲家。

該選舉由香港青年商會主辦，旨在表

揚在工作上有卓越表現和對社會有貢獻的青年。本屆評選團成員為行政會議成員王葛鳴和楊鐵樑、港大校長鄭耀宗、九鐵主席楊啟彥和平等機會委員會主席張妙清。頒獎典禮將於本月七日在香港會議展覽中心新翼二樓宴會廳舉行，由律政司司長梁愛詩主持。

本校駐北大聯絡處正式成立

香港中文大學駐北京大學聯絡處於十月六日正式成立，開幕典禮由李國章校長、北大陳佳洱校長、教育部港澳台辦公室張棟副主任和國務院港澳辦公室社會文化司謝偉民處長主持。

中大是最早與內地高等院校全面發展合作關係的香港高等院校，現今與數十所內地院校和學術機構簽訂交流協議，開展了許多合作項目，伙伴包括北京大學、清華大學、上海交通大學、復旦大學、中山大學、中國科學院、中國社會科學院等。

北京大學在今年舉行百年慶典時，特邀李國章校長為主題演講嘉賓，本校復應北大邀請，將北大校慶活動在互聯網上直播。北大則協助本校錄取部分內地精英入讀中大本科課程。

李國章校長在典禮上感謝內地院校和學術機構，在過去近二十年來與本校協力推動學術和科研合作計劃。聯絡處正式成立後，中大與內地院校的交流合作將會邁進新里程。他更強調：「聯絡處將會成為有效的橋樑，進一步推動香港與內地的學術交流，讓兩地人才可以互相補足，建立互惠互利的具體發展計劃。」當日出席典禮的嘉賓眾多，包括來自中國科學院、中

國社會科學院、北京大學、中國人民大學、北京醫科大學、中國協和醫科大學、北京郵電大學、北京工業大學、北京理工大學、北京外國語大學、石油大學、北京師範大學、中國政法大學、首都師範大學、中國科技大學研究生院、北京中醫藥大學、對外經濟貿易大學、中央民族學院等院校的代表。

香港中文大學駐北京大學聯絡處位於北京大學的南閣，地處校園中心，交通極為方便。聯絡處負責提供本校的資料，促進本校單位跟內地院校的交流協作，並提供完善的辦公與通訊設施，給訪京公幹交流的中大人員使用。



香港中文大學駐北京大學聯絡處正式成立。本校代表團與北大常務副校長遲惠生教授（前排左四）、北京醫科大學副校長王宇教授（前排左六）等於聯絡處門前合照。

會計畢業生就業情況理想

專業會計學課程九八年畢業生的就業情況極佳，並沒有受到亞洲金融風暴的影響。

會計學院本年五月向應屆畢業生進行就業調查，發現他們獲六大會計師行聘約的人次比九七年的為多；平均每人獲一點五二份聘約，比九七年的一點一七，上升

達三成。

六大會計師行近年聘請的本地大學畢業生中，三成是本校會計畢業生。一九九四至九七年間，參加香港會計師公會及英國特許公認會計師公會香港分會聯合考試的考生之中，在不得豁免的四份試卷取得最佳成績獎者，四成三為中大畢業生。

專業會計學課程畢業生就業情況

| | 一九九八年 | 一九九七年 |
|----------------------|------------|------------|
| 畢業生人數 | 174 | 218 |
| 獲六大會計師行聘約的人次（每人平均聘約） | 264 (1.52) | 256 (1.17) |
| 獲六大會計師行聘約最少一項的人數 | 107 | 94 |
| 獲六大會計師行聘約最少兩項的人數 | 63 | 75 |
| 回收問卷（回覆率） | 152 (87%) | 167 (77%) |