



University News

Council News



Dr. Lee Jung-sen

Life Member

Dr. Lee Jung-sen has been appointed a life member of the University Council from 7th May 1992, in recognition of his distinguished service to the University over the past three decades.

Dr. Lee is chairman of the Lee Gardens International Group and director of numerous business concerns, including Swire Pacific Ltd., Television Broadcasts Ltd., and the Shanghai Commercial Bank Ltd.

Dr. Lee's long association with the University dates back to its inception in 1963, when he was first appointed as a member of the University's Provisional Council. He then served as member of the Committee

for the Installation of the First Vice-Chancellor and First Congregation for the Conferment of Honorary Degrees, and as chairman or member of numerous other University committees, including the Terms of Service Committee, Finance Committee and the Institute of Chinese Studies Grants Committee. Dr. Lee is also a major benefactor of the University's Art Gallery, and chairman of its management committee.

In recognition of his outstanding contribution to higher education and the economic prosperity of Hong Kong, he was conferred the degree of Doctor of Laws, *honoris causa*, by the University in 1974.

New Members

* The following persons have been elected by the assembly of fellows of the respective colleges as members of the University Council for a period of three years:

- Dr. Fanny M. C. Cheung (Chung Chi College), from 23rd April 1992.
- Dr. Serena S. H. Jin (New Asia College), from 27th April 1992.

* Mr. Lee Hon-chiu has been elected as a member of the University Council initially for the period from 10th June 1992 to 17th October 1993.

Mr. Lee Hon-chiu is currently chairman and managing director of Hysan Development Company Ltd. He also serves as non-executive

director of many public and business organizations such as the Securities and Futures Commission, Cathay Pacific Airways Ltd., Hang Seng Bank Ltd., the Hong Kong and China Gas Company Ltd., HSBC Holdings plc., and Sime Darby Hong Kong Ltd.

Mr. Lee is also an active figure in education and community service. He is a member of the University Court of the University of Hong Kong, Council of the Hong Kong University of Science and Technology, and member of the Institute for Research and Consultancy of the City Polytechnic of Hong Kong. He has been involved in the activities of the Hong Kong Society for the Protection of Children since 1978.



Mr. Lee Hon-chiu

Council Appointments

* Mrs. Alice K. Y. Lam has been re-appointed by the University Council as Treasurer of the University for a period of three years from 1st July 1992.

* Prof. S. W. Tam has been reappointed pro-vice-chancellor of the University for two years from 1st August 1992, and as dean of the Graduate School for one year from 1st September 1992.

* Prof. P. C. Leung has been appointed head of New Asia College for four years from 1st August 1992, succeeding Prof. T. B. Lin.

* Prof. C. Y. Lee has been re-appointed head of United College for three years from 1st August 1992.

* Prof. H. C. Kuan has been appointed University Dean of Students for one year from 1st August 1992, succeeding Prof. C. Y. Lee.

Foundation Stone Laid for the Wong Foo Yuan Building



New Faculty Deans

Dean of Faculty of Arts

Dr. H. H. Ho has been re-elected dean of the Faculty of Arts for three years from 1st August 1992.

Dean of Faculty of Medicine

Prof. A. K. C. Li has been elected dean of the Faculty of Medicine for three years from 1st July 1992.

Dean of Faculty of Social Science

Prof. Rance P. L. Lee has been elected dean of the Faculty of Social Science for three years from 1st August 1992.

An eight-storey building is under construction on the Chung Chi campus as part of the redevelopment of the college's teaching blocks. The new building has been named after Mr. Wong Foo Yuan, a local industrialist who has made generous donations to the University for the establishment of a Centre for Environmental Studies and various other research programmes.

The foundation stone of the building was formally laid on 3rd June. Mr. Wong Foo Yuan was the guest of

honour on the occasion, and Prof. Charles K. Kao, the vice-chancellor, thanked Mr. Wong for his staunch support to the University over the years in his official address made at the foundation-stone laying ceremony.

The new building will have a total floor area of 5,000 square metres and is expected to be completed by the end of 1993. There will be a lecture hall, classrooms, workshops, offices and covered carparks, mainly for the use of the departments of geography, psychology, and architecture.

A \$20 Million-Grant for 44 Research Projects

Forty-four research proposals submitted by academic and research staff of this university have succeeded in obtaining earmarked grants totalling HK\$19,264,000 from the University and Polytechnic Grants Committee (UPGC) this year.

Such research proposals fall into eight different areas: administrative, business and social studies (5); arts and language (2); biological sciences (6);

computer science, information technology and mathematics (3); education (3); electrical and electronic engineering (2); medicine (16); and physical sciences (7).

For 1992-93 the Government has made available a total of HK\$122 million to seven local tertiary institutions for research purposes. About 30 per cent of this amount, or \$36.5 million, has been directly allocated to these

institutions to finance projects costing less than \$200,000 each, and \$6 million has been set aside for central allocation to strengthen the research base in the various institutions. The balance of \$79.5 million will be awarded to deserving research proposals submitted by the academic and research personnel in the seven institutions and selected by the UPGC for support. The \$19.264 million allocation earmarked for CUHK

projects represents 24 per cent of this \$79.5 million budget. And in terms of the number of projects supported, i.e. 44, CUHK ranks top among the seven

institutions.

The Research Committee of the University has announced that applications for UPGC research grants

for 1993-94 are now being invited. Details and application forms are obtainable from the Research Administration Office (Tel. Ext. 7866).

Donation of \$1.4 Million from the Croucher Foundation

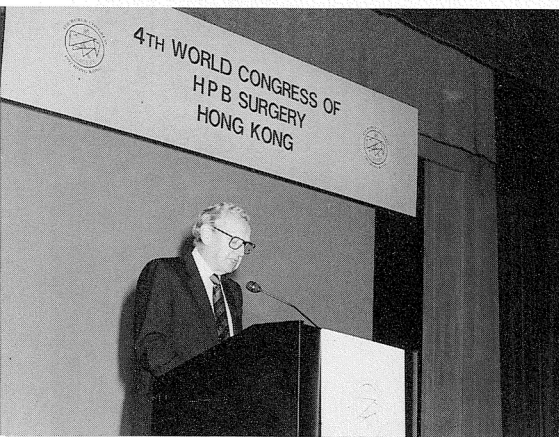
The Trustees of the Croucher Foundation recently approved donations totalling HK\$1,400,000 to support two research projects undertaken by staff members of the University:

– HK\$1,000,000 for a three-year research project on 'Synthesis and biological evaluation of potential

glycosidase inhibitors and anti-cancer agents from (-)-quinic acid' by Dr. Tony K. M. Shing of the Department of Chemistry.

– HK\$400,000 for a two-year research project on 'Biological detoxification of rapeseed meal by edible fungi' by Dr. Yum-shing Wong of the Department of Biology.

Fourth World Congress of HPB Surgery



Over a thousand doctors from 78 countries took part in the fourth World Congress of Hepato-Pancreato-Biliary (HPB) Surgery held at the Hong Kong Convention and Exhibition Centre from 7th to 11th June.

That was the first world congress held by the World Association of HPB Surgery outside Europe, and the University's Department of Surgery had been chosen to host the function.

The congress provided a forum for medical doctors and scientists to exchange their experience in the treatment of diseases of the liver, pancreas, and the biliary system, and an opportunity for them to update themselves on the latest developments

in treatment techniques, and the use of new drugs and surgical equipment. Major themes covered recent advances in the treatment of liver, bile duct and pancreatic cancers, and new technological developments such as endoscopic surgery, laparoscopic surgery and transplantation surgery. Fifteen lectures were delivered and speakers included Prof. Tang Zhao You, a liver cancer expert from China, and Dr. Russell Strong, a liver-transplant specialist from Brisbane, Australia. Some 500 papers were presented, all of which were selected by an international grading panel of experts under the chairmanship of Dr. Henry Pitt, vice-chairman of the Department of Surgery at the John Hopkins Hospital in Baltimore, USA.

A distinguishing feature of the congress was the participation of over 100 leading medical doctors and scientists from China.

A trade exhibition was concurrently held, displaying a wide range of products related to hepato-pancreato-biliary surgery. Over 30 manufacturers, suppliers, pharmaceutical companies and publishers took part in the exhibition.

Seminar on Sexual Harassment in the Workplace



The Gender Research Programme of the Hong Kong Institute of Asia-Pacific Studies (HKIAPS) organized a seminar on 6th June to investigate the problem of sexual harassment in the place of work. Discussion was held along the themes of the definition of 'sexual harassment', case studies of sexual harassment, sexual harassment on the campus, and ways of coping with sexual harassment. Mrs. Miriam Lau, Legislative Councillor, was the guest of honour in the seminar, and several experts and academics involved in relevant studies were invited to deliver speeches. They included Miss Tang Yin-ngor from the woman committee of the Hong Kong Confederation of Trade Union; Miss Leung Lai-ching from the Coalition Against Sexual Abuse; Miss Elaine Wong, human resources manager of the Northwest Airlines; and Dr. Choi Po-king of the Gender Research Programme in the HKIAPS.

The Right to Communicate

An international conference on 'The Right to Communicate' was held at the Cho Yiu Conference Hall on 17th and 18th June to examine how the concept of 'the right to communicate' was understood, recognized and practised in various Chinese societies.

The conference was jointly organized by the Department of

Journalism and Communication and the World Association for Christian Communication based in London. Some 20 scholars and media professionals from the USA, the UK, Australia, Taiwan and Hong Kong attended the function, which was divided into six discussion sessions on different themes.



College Graduations

Over 1,500 students graduated from the University's four constituent colleges this year, and college graduation ceremonies were held in late May and early June on the campus.

Shaw College

Shaw College produced 339 graduates in 1991-92 and the college graduation ceremony took place on 30th May at the Sir Run Run Shaw Hall. Officiating at the ceremony were Prof. Chia-wei Woo, vice-chancellor of the Hong Kong University of Science and Technology, and Prof. C. N. Chen, head of Shaw College. They also presented certificates of merit to prize winners.

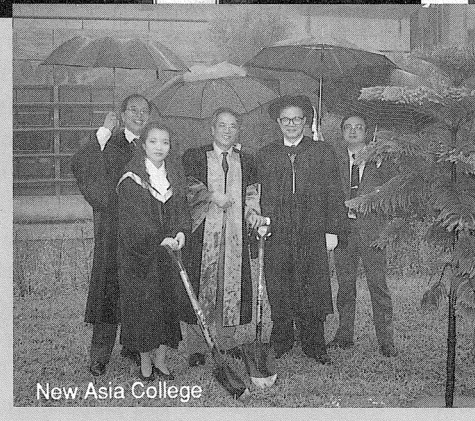
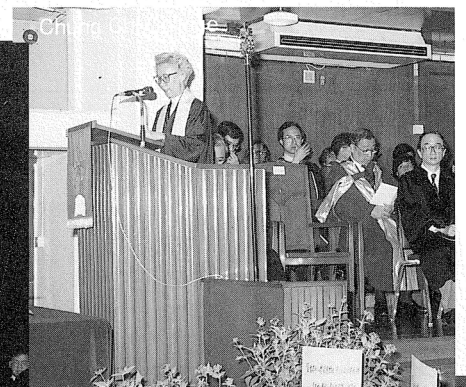
United College

The 1992 graduation ceremony of United College was held on 6th June, also at the Sir Run Run Shaw Hall. Prof. Wang Gungwu, vice-chancellor of the University of Hong Kong, and Mr. Thomas Cheung, chairman of the alumni association of the college, addressed the 402 graduates of the college as guests of honour. Over 1,000 guests attended the function.

New Asia College

The 41st farewell assembly in honour of the 1991-92 graduates of New Asia College was held in the morning of 7th June at the Sir Run Run

Shaw College



Shaw Hall. Prof. T. B. Lin, the college head, officiated at the ceremony. Mr. H. C. Tang, chairman of the college board of trustees, was invited to address the 384 graduates. Group photos were taken after the ceremony at the college gymnasium.

Chung Chi College

Chung Chi College's 38th val-

edictory service took place on the afternoon of 7th June in the college chapel. The Revd. Lee Ching Chee, associate general secretary of the Hong Kong Council of the Church of Christ in China, was the guest speaker. A tea reception for guests and parents was then organized at the college staff club and chapel lounge. The college produced 395 graduates this year.

Short Course on Medical & Surgical Diseases of the Liver

The Department of Anatomical and Cellular Pathology and the Hong Kong Division of the International Academy of Pathology cosponsored a 'Short Course on Medical and Surgical Diseases of the Liver' at the Prince of Wales Hospital on 13th June 1992. A total of 68 academics and pathologists

from local universities, government and subvented hospitals, as well as private laboratories attended the course. The chief speaker was Dr. Kamal G. Ishak, chairman of the Division of Hepatic and Gastrointestinal Pathology, the Armed Forces Institute of Pathology, Washington DC, USA. The course

consisted of a microscopic workshop on 20 cases of liver diseases, and discussion sessions on these cases and related diseases such as hepatitis, metabolic liver diseases and new entities of vascular and primary liver tumours.

434 Awarded Diplomas-in-Education

This year, a total of 434 students completed the diploma-in-education programme run by the Faculty of Education. Of the lot, 75 were from the one-year full-time programme, 143 from the two-year part-time evening programme, and 216 from the two-year part-time day programme.

The School of Education was reorganized into the Faculty of Education only last September, and the 434 students were the first batch of graduates of the new faculty. A graduation ceremony for these students was held on 27th, and officiating at the ceremony was Mr. Cheung Man-kwong, Legislative Councillor and president of the Professional Teachers' Union.

Awards & Honours

Two staff members of the University were on the Queen's Birthday Honours List announced last month:

* Prof. S. W. Tam, the pro-vice-chancellor, was made Officer of the Most Excellent Order of the British

Empire (OBE).

* Prof. David Gwilt of the Department of Music was made Member of the Most Excellent Order of the British Empire (MBE).

New Publications of the University Press

The following books will be sold at a 20 per cent discount to staff members at the University Bookshop, John Fulton Centre.

■ *China Review 1992* (in English) edited by Kuan Hsin-chi & Maurice Brosseau, 400 pages, hardcover, HK\$280.

China Review 1991 & China Review 1992 (in English), set of two books at special price HK\$395.

■ *Memories of Peking (South Side Stories)* (in English) by Lin Hai-yin, translated by Nancy C. Ing & Chi Pang-yuan, 154 pages, paperback, HK\$60.

■ Prof. T. B. Lin, professor of economics, has been reappointed by HE the Governor as a member of the Air Transport Licensing Authority for two years from 16th May 1992.

■ Prof. S. W. Tam, pro-vice-chancellor of the University, has been appointed by HE the Governor as a member of the Hong Kong Council for Academic Accreditation for two years from 8th June 1992.

■ Prof. David C. Anderson, professor of medicine, has been appointed by HE the Governor as a

Services to the Community and International Organizations

member of the Pharmacy and Poisons Board for three years from 1st July 1992.

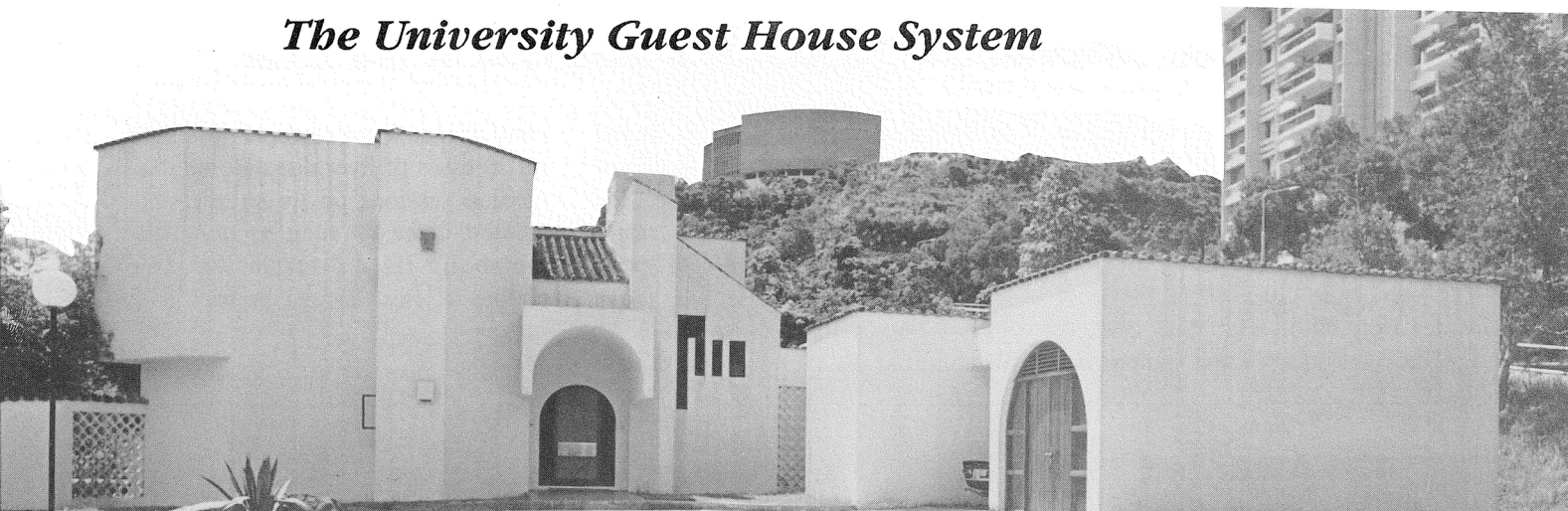
■ Dr. Chan Kai-ming, reader of orthopaedics and traumatology, has been appointed by HE the

Governor as a Board Member of the Hong Kong Sports Institute from 1st July 1992 to 31st March 1994. Dr. Chan has also been appointed as an honorary member of the China Sports Science Society from March 1992.

■ Mr. Stephen C. M. Yam, lecturer in accountancy, has been appointed by the Joint Council on Salary and Fringe Benefits in Subvented Organization as its honorary auditor for one year from 1st July 1992.

(All information in this box is provided by the Information Office)

The University Guest House System



As an international institution of higher learning, the University has actively promoted the interaction of Chinese and Western cultures since its inception. Guest houses have been built on the campus to provide comfortable accommodation for a wide variety of visiting scholars and guests from different parts of the world.

The University Guest House (UGH) system started with two facilities: the Yali Guest House next to the University Health Service, and the twins of University Guest Houses I and II near the Shaw College campus.

Two new members joined the UGH family this summer: the Chan Kwan-tung Building which opened at the end of May, and the Chiang's Building which began service only this month.

Both are situated next to the Yali Guest House.

Portions of the Inter-University Hall (near the University Train Station) will also formally come under the system in August.

How has the system reorganized itself to cope with such rapid expansion? In this issue, the CUHK Newsletter will briefly review the development of the UGH system and introduce new facilities that have been provided to improve service.

The Early Guest Houses

Yali Guest House

Overlooking Tolo Harbour and enjoying a scenic view of the Ma On Shan area, the Yali Guest House – the eldest brother in the UGH family – was completed in 1974 with a generous donation from the Yale-China Association.

The guest house comprising seven guest rooms, a living room, a dining room and spacious balconies modelled after a family inn was, in the early days, managed by the former Public Relations and Information Section (now renamed Information Office). Reception, cleaning, and cooking were taken care of by a Chinese couple who spoke some English. None of the employees were however professionally trained.

Mr. and Mrs. Chan Chi succeeded

the Chinese couple as housekeepers in the late seventies. Seasoned by decades of service in expatriate homes, Mr. Chan was skilled in Western cuisine, and his guests were most impressed by his two specialities: grilled steak and lemon pies. Mr. Chan was later transferred to run catering services in other University units, and is at present the super boss of the canteens in the Benjamin Franklin Centre and the Medical Sciences Building.

University Guest Houses I and II

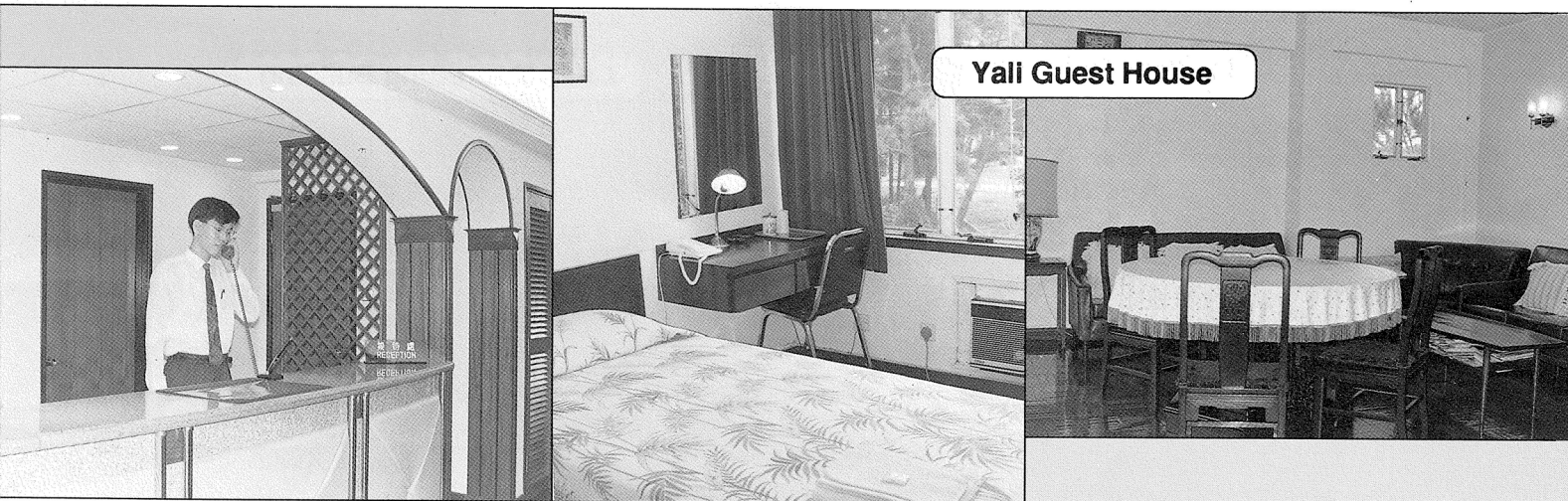
Distinguished by their white-washed walls and brick-red caps, the two Spanish-style guest houses were built in 1973 as quarters for senior administrative staff members. They were subsumed under the UGH System only in 1980.

Each Guest house has two storeys

and together they provide eight guest room units. The ground floor is used as the University's Staff Common Room and houses a restaurant with a greenhouse extension (in Guest House I) and function rooms (in Guest House II) for small parties, private gatherings and receptions.

Inter-University Hall

The building was completed in 1966 and housed both offices and staff quarters in the early days. Ever since the mid-eighties when academic exchange activities with institutions in mainland China dramatically increased, certain units in the Inter-University Hall have been converted into guest rooms for visitors from China. Such units are well equipped with cooking facilities and washing machines, and are suitable for longer-term stays.



The New Guest Houses

The two youngest brothers of the UGH system are each named after their respective donors: the Chan Kwan-tung Building after Mr. Chan Kwan-tung, and the Chiang's Building after Dr. Chiang Chen. The former comprises 31 guest rooms on five floors while the latter houses 64 twin rooms on its nine storeys. In terms of the number of rooms available for hire, the capacity of the two new guest houses is more than treble that of the three old guest houses put together.

Designed by the Buildings Office, the new guest houses share a similar outlook: a stepped structure that corresponds with the sloping landscape nearby, and ashy blue outer walls which blend pleasantly with the natural environment. Architects have spent a lot of time and effort to design the position of windows so as to allow most rooms a sea view.

The internal layout is modelled after a simple hotel. All curtains, chairs and bed covers are made of the same fabric of patterned pastel. All units are carpeted and equipped with TV sets and mini-fridges.

How the Guest Houses Were Run

When the Yali Guest House was still the only member of the UGH system, its management was vested in

a committee, on which the University Secretary served as chairman, and the head of the PR and Information Section served as secretary. Day to day operation was supervised by the PR and Information Section.

When University Guest Houses I and II joined the system in 1980, an enlarged UGH Management Committee was formed at the same time. The supervisor of the three guest houses was still the head of the PR and Information Section.

As the number of visitors continued to grow, the UGH Management Committee decided to appoint a full-time manager in 1984 to assume overall responsibility for the operation of the system. Under the manager were a dozen staff members, who took care of reservations, cleaning, and catering services.

The UGH System thus began to evolve slowly from its early family-style operation into a more modern management with staff striving to provide comfortable, affordable accommodations and friendly service.

Management Reorganized

Entering into the 1990s, the University vigorously strives to expand its linkages with overseas institutions, and the Office of Academic Links was established in 1991 to coordinate efforts made in this direction. The construction

of new guest houses on the campus was also commissioned to prepare for the anticipated increased volume of guests.

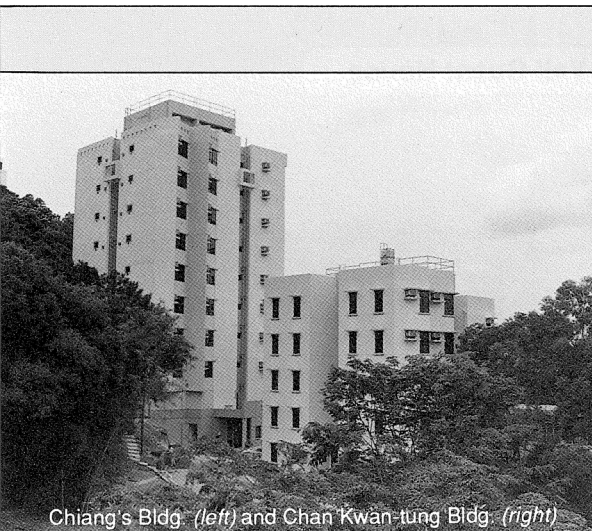
With the completion of the new guest houses this year, the managerial structure of the UGH system has also been reorganized to cope with expanded facilities and to improve service.

In the new UGH system, the supervisor of all the guest houses, old and new, is Mr. Mark Sheldon, who is concurrently director of the Office of Academic Links. Reporting directly to him is the guest house manager, Mr. Donald Ng. Under Mr. Ng are 23 staff members, working in four major divisions:

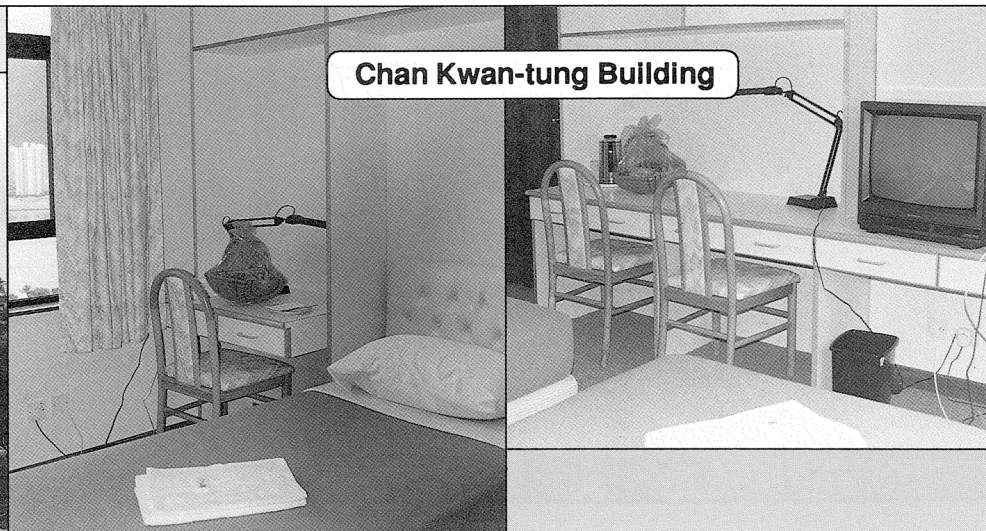
- The Front Office at the Yali Guest House which handles reception work for the Yali Guest House, the Chan Kwan-tung Building and the Chiang's Building.
- The Housekeeping Division which is responsible for all cleaning and maintenance work.
- The Catering Division which operates the Staff Common Room restaurant and the function rooms.
- The Kitchen which takes charge of food and beverage supplies.

New Facilities and Services

Efforts of the new management are now focused on providing better and more efficient service. Areas for improvement have been identified and



Chiang's Bldg. (left) and Chan Kwan-tung Bldg. (right)



a host of new services and facilities have been introduced:

- Three guest rooms in the Yali Guest House have been converted into a central reception centre and a management office.
- International Direct Dialling (IDD) facilities are now available in the new buildings.
- All towels and hangers now bear the University emblem.
- Information folders are now placed in each room to provide useful information such as University office telephone numbers, major routes of local public transport, University or city-wide activities etc.
- All staff members in the House-keeping Division now wear uniforms and name badges.
- Biweekly in-service training sessions are organized by each division head for his subordinates on selected aspects of work such as telephone manners, handling reservations, language-skills, etc.
- A new chef has been recruited to improve the menu.

Can We Use the Facilities?

While the guest houses are primarily intended for overseas visitors who come to the University to attend meetings and conferences or to conduct research, they are also open for

use by University faculty and staff, their family members and friends. If you want to spend a few days on the campus to enjoy the new facilities, you should make reservations at the central reception centre (Tel 6036422, or 6036411 – ext. 3008). Reservations are

handled on a first-come-first-served basis and room rates have been separately listed on the next page for readers' information.

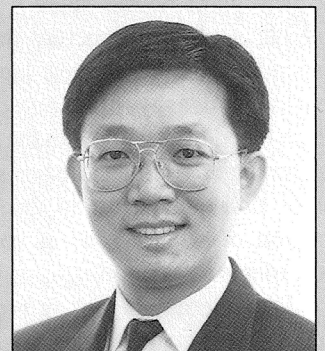
Do go and have a look at these important new facilities on the campus! ○

Guests from All Over the World

The UGH System has been in operation for 18 years now, and visitors have come from almost every corner of the world. Donald Ng, the Guest House Manager, so describes the profile of his guests:

Guests from mainland China rank top in number, followed by those from the United States, the UK, and South-east Asia. The majority come as academic visitors or to attend conferences. We sometimes have staff members' relatives or friends who come to Hong Kong for sightseeing.

Guests of different origins basically have the same requirements, though there are regional differences in preference. For instance, most guests from mainland China smoke and have a liking for tea. We must see to it that the common areas do not smell of tobacco and that teapots are refilled promptly. On the other hand, a cup of refreshing coffee at breakfast is most important for visitors from Western countries.



How Do They Treat Guests

Comments from guests about the UGH service have been a mixture of compliments and criticisms. UGH staff are frequently commended for their warm and friendly service and letters of thanks come in from time to time. Once a visitor wrote back after a two-week sojourn. He not only spoke highly of the efficient service he experienced but also surprisingly managed to name each and every staff member concerned.

Criticisms usually focus on the facilities. Guests complain, for example, of the low positioning of air conditioners in the guest rooms, which makes it difficult for cold air to circulate. Many also find the fixtures too old and worn out.

'We are well aware of such problems, but apart from reconstruction which is too expensive, there is little we can do about these structural weaknesses,' says the Guest House Manager. 'In moving ahead, we've decided to build on our strength – warm hospitality and friendly service. We always try to be

aware of our guests' background such as their country of origin, the duration of their stay and their last abode in Hong Kong, so that we can make better preparations. Once we had a guest who moved in after spending quite some time at the Regent Hotel. We all know that the Guest House stands no comparison with the Regent but we tried our best to serve this guest. Fortunately, he turned out to be a reasonable gentleman and was appreciative of the service he got.

'On another occasion we had a professor from the UK who stayed with us for a month, during which period he made two to three long distance calls per day. When some calls had to be made in the small hours owing to time difference, our staff members would have an alarm clock set to ensure that connections were made on time before waking up the professor to complete his call.

'So far, few comments have

been received about our new facilities: the Chan Kwan-tung Building and the Chiang's Building. On the whole they have been found to be adequate and comfortable. To greet the first two guests of the Chan Kwan-tung Building, we specially arranged a small welcome party for the couple at the entrance of the guest house. We presented them with souvenirs and took photos with them. The two guests were genuinely surprised and moved.'



UGH Room Tariff

	Single occupancy (HK\$)	Double occupancy (HK\$)	Triple occupancy (HK\$)	Quadruple occupancy (HK\$)
Chan Kwan-tung Building				
Single Room	250	—	—	—
Twin Room	270	320	—	—32
Whole Unit of Single & Twin Rooms	420	480	540	—
Chiang's Building				
Bed, shared in Twin Room	150	—	—	—
Twin Room	240	280	—	—
Whole Unit of two Twin Room	400	440	500	560
University Guest Houses I & II				
Twin/Double Room	300	350	—	—
Triple Room	350	400	400	—
Suite	380	420	420	500
Yali Guest House				
Single Room	220	—	—	—
Twin Room	280	320	—	—
Double Room	250	290	—	—
Inter-University Hall				
Twin Room	125	250	—	—

(Effective 20th May 1992)

Personalia

Information in this section can only be accessed with [CWEM password](#).

Information in this section can only
be accessed with **CWEM password**.

Information in this section can only
be accessed with **CWEM password**.

ANNOUNCEMENTS

Applications for Funds from the UPGC Direct Grant for Research 1992-93: Social Science & Education

The Social Science and Education Panel of the Research Committee invites applications from staff members of the Faculty of Social Science and the Faculty of Education for allocations from the Direct Grant for Research 1992-93 to fund research proposals costing less than \$60,000 each. Proposals should be submitted to the panel before 15th September 1992. For further information, please contact the secretary of the panel, Dr. Kin-sheun Louie, at Ext. 7134.

Bishop Williams Memorial Fund Visiting Researcher/Trainee Programme in Japan

The Board of Trustees of the Bishop Williams Memorial Fund of the Anglican-Episcopal Church of Japan (Nippon Sei Ko Kai - NSKK) invites applications for participation in their Visiting Researcher/Trainee Programme 1993-95.

Successful candidates will be attached to Rikkyo University at Tokyo or other NSKK-affiliated institutions in Japan to do research or receive training in their chosen field.

The period of research and/or training will be approximately one and a half years, commencing October 1993. During the initial six months, participants in the programme will be expected to undertake studies in the Japanese language.

Tuition will be waived, and a stipend of ¥185,000 (approx. HK\$11,000) per month and single person's quarters will be provided. Transportation expenses to and from Japan for the visiting researcher/trainee will be reimbursed.

The applicant should be

- (a) under 35 years of age on 1st October 1993;
- (b) a graduate of a university or college, be currently employed in the civil service, or other commercial, agricultural or educational enterprises; or enrolled in a graduate school; or engaged in research or training at a recognized educational or research institution; or a graduate of a junior college or of a specialized technical or vocational school with a

few years of actual working experience subsequent to his graduation; and

- (c) an Anglican recommended by the Anglican bishop of his diocese, or a Christian of another denomination recommended by an Anglican bishop.

Application forms and further information may be obtained from the Personnel Section (Enquiries: Ext. 7183 or 7265). Applications should be sent direct to the following address by 30th November 1992:

Bishop Williams Memorial Fund
c/o Office of the President
Rikkyo University
Nishi Ikebukuro, Toshima-ku
Tokyo 171, Japan

Local Education Allowances (LEA)

Members of staff who are entitled to claim LEA for their dependent children in 1992-93 are requested to complete and return an application form for each child with receipts of school-fees as early as possible to the Personnel Section. Please direct all enquiries to the section at Ext. 7292.

University Swimming Pool Temporarily Closed

Due to the suspension of electricity supply from 9.00 a.m. to 5.00 p.m. on Sunday, 26th July 1992, the University Swimming Pool will be closed on that day.

The pool will reopen as usual on Monday, 27th July.

Shaw College Staff Dining Room Reopens

The Shaw College Staff Dining Room has reopened after three weeks' closure for annual maintenance. The opening hours are from 12.00 noon to 9.00 p.m. every day. All University employees are welcome to try the services of the new caterer. However, a 10 per cent surcharge will be imposed on diners who are not members of the Shaw College Staff Association.

Colleagues on Terms of Service B or above may apply to join the staff association as associate members. Annual membership fee is HK\$200. For more information please call Ext. 7354/7356.

Side Lights

Come Join the Staff Boat Club

The Staff Boat Club was founded in 1986 to make use of the proximity of the University campus to the sea for leisure time activities of staff members. In Hong Kong water sports have a season of 12 months per year. The club places special emphasis on sailing and wind-surfing. Presently the club has about 50 members across the ranks and faculties in the University.

The club provides hardstanding spaces where members may keep their own boats. The club also owns one Otter dinghy (for 2 to 3 persons) and two Laser dinghies (for single-handed sailing), which are for the exclusive

use of members as part of the membership benefits. Rescue services are provided by the Water Sports Centre if the need arises. The club organizes sailing courses, cruises and weekend outings, and its premises are also a very popular barbecue site for members and their guests, and a place to meet with friends and sit outside enjoying a cold drink and a chat.

Any staff member of the University is eligible for ordinary membership or temporary membership (if on short term contract). Alumni may join as associate members. Current membership dues include a joining fee of

\$1,000 for Terms A staff and equivalent, or \$500 for all other staff, and monthly fees of \$70 (or \$80 including hardstanding fee for boat owners). Temporary and associate members pay no joining fee but monthly fees of double the above mentioned amount.

For further information, have a look at the University Water Sports Centre next to the Marine Science Laboratory, or call one of the following:

	Office	Home
Dr. Alfreda Stadlin	6096783	6036465
Dr. Donald Lyon	6362301	6036330
Dr. Michael Tam	6096879	6045417

CUECU Annual General Meeting and Sixth Anniversary Dinner Party

The Chinese University of Hong Kong Employees' Credit Union (CUECU) held its annual general meeting at the Shatin Treasure Restaurant on 22nd 1992, which was followed by a dinner party, games and a singing contest. Over 300 members and guests attended the function.

The meeting approved the various reports given by the CUECU president, treasurer, and the chairpersons of various committees, and endorsed a resolution to pay a six per cent dividend

on all fully-paid shares. New office-bearers for 1992-93 were also elected:

Executive Committee

Mrs. Faith Ho (President)
Mr. T. S. Lo (Vice-President)
Mrs. Chan M. C. Tai (Secretary)
Mr. Kwong Chi Nan (Treasurer)
Mr. Eric Ho
Mr. Lawrence Chiu
Miss Chu Chor Chun

Credit Committee

Mr. Joseph Chung (Chairman)

Mrs. Karen Yau (Secretary)
Mr. Leung Ping Kuen

Supervisory Committee

Mr. Vincent Chen (Chairman)
Mrs. Salome Chan (Secretary)
Mr. Linus Lau

Education Committee

Mr. Eric Ho (Chairman)
Miss Wendy Chan (Secretary)
Mr. Wong Tak Chung
Mr. Kwong Chi Nam

We welcome your contributions

1. Items for the next issue (mid-August 1992) should reach the Editor by **27th July 1992**.
2. All contributions and suggestions should be sent to the Editor, CUHK Newsletter, c/o the Publication Office, University Secretariat, The Chinese University of Hong Kong (tel. 6097297; fax. 6035503).
3. Contributions should bear the writer's name and contact telephone number, and may be published under pseudonyms. Articles without Chinese translations will appear in the English version of the Newsletter only. No anonymous letters will be published.
4. The Editor reserves the right to reject contributions and to edit all articles for reasons of clarity, length or grammar. Those who do not wish to have their articles amended should indicate clearly in writing.
5. No part of this Newsletter may be reproduced without the written consent of the Editor.
6. This publication has a circulation of 1,100 and is primarily intended for staff members of CUHK. Copies are also sent to local educational institutions and individuals associated with the University. Those who wish to be included on the mailing list please contact the Newsletter direct.

Published by the Publication Office, The Chinese University of Hong Kong

Editor : Amy K. Y. Leung Assistant Editors : K. L. Wan; Florence Chan Graphic Artist : Stella P. C. Lai