

# CUHK NEWSLETTER

Vol.5.4 No.53

April 1994

## Fostering Ties and Building Up Connections

The vice-chancellor spent two weeks in New York and San Jose this February visiting institutions of higher learning and major foundations, and introducing the University and Hong Kong to the Americans.

Early in the trip he visited Yale University and discussed with its

president Prof. Richard C. Levin joint initiatives to strengthen collaborative research and foster faculty and student exchanges. He then met with representatives of the New York University and the Institute of International Education, gave a talk on 'Hong Kong and China: Science and Technology Trends' at the New York Academy of Sciences, and spoke on 'Hong Kong as a Gateway to China and Asia Pacific: An Educator's Perspective' at the Hong Kong Association of New York Seminar. At the seminar he was warmly greeted by a large group of CUHK alumni who were eager to hear about the University's progress.

Prof. Kao then flew to San Jose, California to preside over the International Management Committee meeting of the International Conference on Integrated Optics and Optical Fibre Communications (IOOC). IOOC'95 will be held in Hong Kong after three years of successful lobbying by the University. He also attended a conference on optical fibre communications, and gave a talk to the Photonics Society of the Chinese Americans.

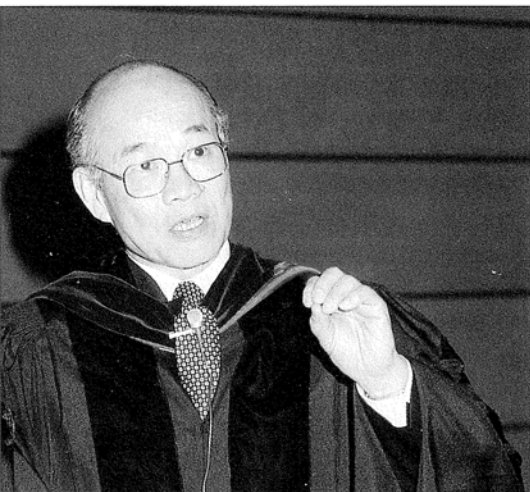
In both New York and San Jose the vice-chancellor visited potential donors including the AT & T Foundation, the Henry Luce Foundation, and the Starr Foundation to enlist funding support for the University's research and development programmes.



Above: Prof. & Mrs. Kao with President Richard Levin of Yale University (right 2), Mr. Christopher R. Reaske (right 1), Director of Corporate & Foundation Relations at Yale, and Mr. Jacob Leung (left 1)

Below: VC with CU alumni in New York City

## Concept of State Sovereignty Needs Modification



The sovereign state system needs to adapt itself to the emergence of divided nations after the Second World War, says Prof. Byron S. J. Weng, professor of government and public administration.

In his professorial inaugural lecture delivered on 11th March, Prof. Weng pointed out that the

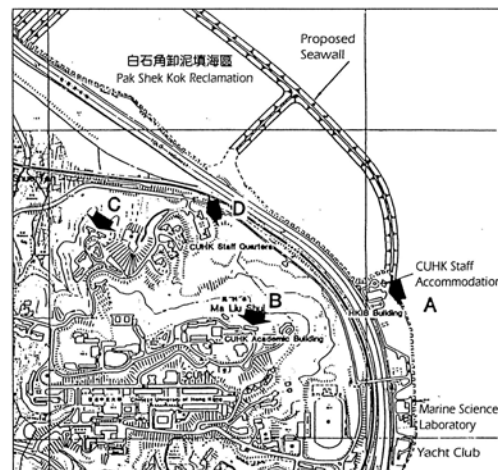
generally-held concept that sovereign states are 'absolute and indivisible' had caused a lot of strain in international relations, particularly those involving 'divided nations' such as Korea, Germany, Vietnam, and China. When sovereignty is split for a significant period of time and divided nations continue to exist, he believes that adjustments in international law and organization must be made so that the international community can come to grips with such a political reality. He used China as an example to examine the characteristics of divided nations, their evolution towards reintegration or separation, and the variables involved in the process.

Entitled 'Sovereignty Split - A Pre-Theory of Divided Nations', the lecture was held at the lecture theatre of the Ho Sin-hang Engineering Building.

## Dumping Site at Pak Shek Kok Causes Concern

The government has identified Pak Shek Kok as a suitable site for the disposal of surplus construction material suitable for reclamation. The proposed reclamation project will soon be gazetted.

The project site is some 67 hectares of marine area between Tai Po and Sha Tin on the western border



## CUHK to Coordinate Inter-institutional Broadband Communications Network

The University recently received HK\$1.78 million from the Research Grants Council (RGC) of the University and Polytechnic Grants Committee to set up an Inter-institutional Broadband Communications Network Testbed.

The network will be based on ATM (Asynchronous Transfer Mode) technology, which has been adopted worldwide to transport data and switch information traffic on the Broadband Integrated Service Digital Network (B-ISDN). It will greatly

facilitate research in network control and management, and the development of network services and applications. Its high speed and multimedia transport abilities will also open up new ways of conducting collaborative research.

The proposal to install such a network was made by The Chinese University and supported by the University of Hong Kong and the Hong Kong University of Science and Technology. The system will consist of three switches, one to be installed at each university. They will be linked by optical fibres and the

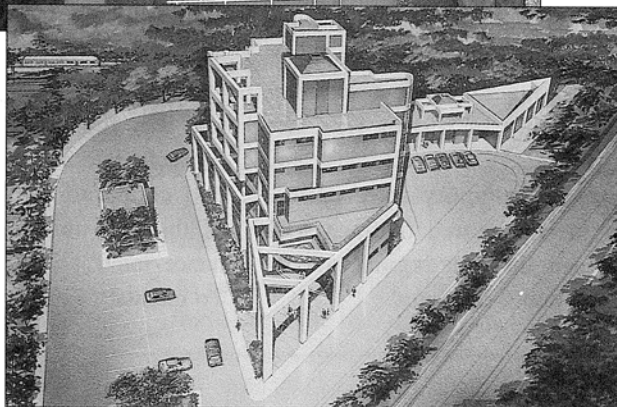
of Tolo Harbour to the north of the Hong Kong Institute of Biotechnology. There is currently no road access leading to the site. The government therefore plans to build a new road that will pass through the eastern part of the University campus near the Water Sports Centre and the Marine Science Laboratory to enable large trucks to reach the dumping area. Construction work will begin in 1995 and dumping is expected to last for eight years.

The University has expressed great concern over the possible adverse effects of the project on the campus. There are worries about noise pollution, air pollution, marine water pollution, and visual land use impacts. It has therefore requested the Planning, Environment and Lands Branch to carefully study the environmental issues involved and consider alternative sites. The University is also anxious to know the land use of the reclaimed area. The Campus Planning and Building Committee will follow up the progress of the project and give advice to the University Council.

facilities at each site will be managed separately, with The Chinese University coordinating the overall activities.

This is the third time in three consecutive years the University has succeeded in securing grants from the RGC's central allocation scheme for the acquisition of major equipment to strengthen its research base. Similar projects supported over the last two years include a massively parallel computer in 1991-92 and a multi-purpose high field superconducting FT-NMR spectrometer in 1992-93.

## New Research Services Centre Funded by Shanghaiese Benefactors



The foundation stone of the Shanghai Fraternity Association Research Services Centre was officially laid on CUHK campus on 14th March 1994. Prof. Charles K. Kao, the vice-chancellor, Mr. C. W. Wong, chairman of the Shanghai Fraternity Association (HK) Ltd., Mr. Zhang Junsheng, deputy director of Xiuhua News Agency (HK) Branch, and Mr. Weng Xinqiao, head of the Agency's Department of Culture and Education, officiated at the ceremony.

The centre will be built on the Eastern campus next to Bamboo Lodge and contain five storeys with a

gross floor area of 4,600 square metres. Upon its completion in 1995, the new building will house the Technical Services Unit, operating theatre suites, animal rooms, and laboratories for histology, microbiology and radioisotope.

The vice-chancellor thanked the Shanghai Fraternity Association (HK) Ltd. for its staunch support to the University over the years, and for the generous donation of HK\$13,500,000 towards the construction cost of the new centre. It will provide the much needed facilities for the University's vigorous research programmes.

## HK\$734,000 for Community Research on AIDS

A 'Community Research Programme on AIDS' proposed by Dr. Joseph Lau, director of the Centre for Clinical Trials and Epidemiological Research, recently obtained a research grant of HK\$734,000 from the Council for the AIDS Trust Fund.

The first research programme of its kind in Hong Kong, the project aims at building up an infrastructure for AIDS research in the territory. Activities planned include monitoring public attitude towards AIDS and the development of the disease in Hong Kong, studying high-risk behaviour and the quality of life of HIV infected patients, and developing and evaluating community intervention programmes. Research findings will be released through regular newsletters and public seminars.

## CU Debaters Successfully Argue Imported Expertise Is Beneficial to Hong Kong

'Import of mainland expertise is beneficial to the prosperity of Hong Kong' – this was the motion of the 23rd Intersarsity Debating Contest held on 19th March at the Loke Yew Hall of the University of Hong Kong.

Arguing for the motion, the CUHK debating team (Cantonese) defeated the HKU team 5:0 and won its second victory in two years. Miss Yu Ming Lai on the CUHK team was also selected best speaker in the contest.

The intersarsity debating contest was first instituted in 1972 to promote interaction, communication and cooperation between students of the two universities, and to enhance interest in debating activities. To maintain the impromptu nature of

the debate and to encourage quick and creative thinking, the subject of the debate is disclosed to the contestants one hour before the debate.

The language used in the contest alternates between Cantonese and English each year. This year the debate was conducted in Cantonese.

Adjudicators included Mr. Lee Yee, chief editor of *The Nineties Monthly*, the Hon. Peggy Lam, legislative councillor, Mr. Lo Chi Kin, managing director of C. K. Lo & S. Lam Ltd., Mr. Cheng Kai Nam, secretary of the Democratic Alliance for the Betterment of Hong Kong, and Mrs. Jennifer Lun, resourcing and development manager of Hongkong Bank.

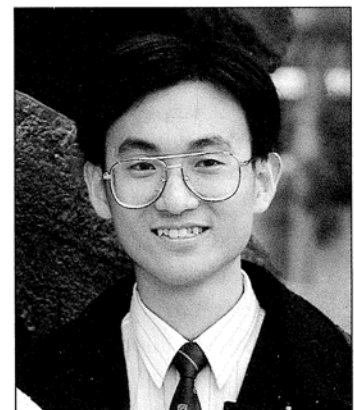
## CU Student Wins Rhodes Scholarship to Study at Oxford

Mr. Wong Ming Fung, final-year finance major from the Faculty of Business Administration, has been chosen as the Hong Kong Rhodes Scholar for 1994. He will study law at Wadham College, Oxford for two years.

Mr. Wong emigrated to Hong Kong with his parents from Fujian 13 years ago. He won a place at The Chinese University in 1990 and will graduate this summer. He has been an active member of the Uni-

versity's debating team and the CU Youth Literary Association. His academic records have been outstanding and he has led study tours to Beijing and Taiwan. He impressed the Hong Kong Rhodes Scholarship Selection Committee as a young man with a 'determination to strive for the best'.

The Rhodes Scholarship was established under the will of Sir Cecil Rhodes and selected Rhodes Scholars are expected to possess



high intellectual merit, outstanding scholastic attainment, pleasant personality, and physical vigour. United States President Bill Clinton was a Rhodes Scholar in his younger days.

# ANNOUNCEMENTS

## Professorial Appointment

Prof. Mark O. M. Tso has been appointed professor of ophthalmology and visual sciences from 1st March 1994.

Born in 1936, Prof. Tso received his medical education at the University of Hong Kong and obtained his M.B. B.S. degrees in 1961. He furthered his studies in the States and received training in ophthalmology and anatomic pathology in different hospitals including the University Hospital at Boston, the Armed Forces Institute of Pathology, the Walter Reed Army General Hospital, and the University of Illinois Hospital.

Before joining The Chinese University, he was professor of ophthalmology at the University of Illinois at Chicago, a post which he had held since 1976. He was concurrently director of the Georgiana Theobald Ophthalmic Pathology Laboratory and the Macula Clinic at the University of Illinois. He also served as medical director of the eye bank of the Lions of Illinois Eye Research Institute from 1989 to 1994.

Prof. Tso is a member of many professional societies, including the National Institute of Health, the American Academy of Ophthalmology, the National Eye Institute, and the National Society to Prevent Blindness. He was president of the American Association for Ophthalmic Pathologists from 1979 to 1986.

Prof. Tso is married, with two children.

## Mandarin and Cantonese Courses for Staff and Spouses

The New Asia Yale-in-China Chinese Language Centre will again offer Mandarin and Cantonese courses to the University's staff and their spouses from 31st May to 9th August 1994.

The following courses have been tentatively scheduled every Tuesday and Thursday from 2.30 p.m. to 4.15 p.m. at the Fong Shu Chuen Building:

- (1) Beginner's course in Mandarin for foreigners;
- (2) Beginner's course in Cantonese for foreigners;
- (3) Beginner's course in Mandarin for non-Mandarin



speakers of Chinese origin;

- (4) Beginner's course in Cantonese for non-Cantonese speakers of Chinese origin.

The size of each class will be limited to eight students and the minimum number of students to form a class is four. Enrolment will be on a first-come-first-served basis.

Basic tuition fee for each course is HK\$3,140. The University will subsidize 40 per cent of the tuition fee for all full-time academic and administrative staff as well as their spouses who are expected to be with the University for at least two years, and who are not receiving a language study subsidy from any other source. For enrolment, please contact the Chinese Language Centre at Ext. 6727 before 21st May 1994.

## Rikkyo University Research Fellowship Programme 1995-96

Rikkyo University now invites applications from academic staff of the University for financial support to conduct research in Japan in 1995-96.

The programme aims at encouraging academic exchange and research in the humanities, social sciences, and natural sciences. Successful candidates can conduct research in collaboration with faculty of Rikkyo or do their own research using Rikkyo's facilities for three to 12 months during the period 1st April 1995 to 31st March 1996.

Economy class airfare to and from Tokyo and a stipend of ¥260,000 to ¥355,000 per month will be provided.

Applicants should be aged 45 or below as of 1st April 1995 and be full professors, assistant or associate professors, lecturers, or instructors.

Application forms and further information may be obtained from the Personnel Office (Ext. 7286). All applications should reach Rikkyo University by 30th June 1994.

## University Swimming Pool Reopens

The University Swimming Pool at the Benjamin Franklin Centre will reopen on Friday, 22nd April. Opening hours are from 10.30 a.m. to 1.40 p.m. and from 2.30 p.m. to 6.15 p.m. Monday through Sunday (including public holidays).

# Side Lights

## 29 Receive Long Service Awards

### List of Award Recipients

Name	Current Post/Department
Ms. Joan Barbara Boozer	Lecturer, English Language Teaching Unit
Mr. Chan Siu-tong	Lecturer, Dept. of Chinese Language & Literature
Dr. Benjamin Y. M. Chan	Senior Lecturer, Dept. of Educational Administration & Policy
Dr. Chen Te	Senior Lecturer, Dept. of Philosophy
Mr. Dang Shu-leung	Senior Lecturer, Dept. of Chinese Language & Literature
Mr. Hsu Dan-lin	Lecturer, Dept. of Finance
Dr. Hui Kwan-yu	Lecturer, Dept. of Chemistry
Dr. Lau Oi-wah	Reader, Dept. of Chemistry
Prof. Rance P. L. Lee	Professor, Dept. of Sociology
Mr. Y. B. Leung	Assistant Registrar, Faculty of Social Science
Mr. Lew Kin-keung	Assistant Librarian I, University Library System
Mr. Norman Ng Yan-tak	Lecturer, Dept. of Geography
Dr. Tam Ping-kwan	Lecturer, Dept. of Mathematics
Dr. Wong Yau-chuen	Reader, Dept. of Mathematics
Mrs. May Choi Yu Mei-ying	Nursing Officer, University Health Service
Miss Nancy Chung Chi-ming	General Clerk I, Office of Industrial & Business Development
Mrs. Hung Wong Chau-yuet	General Clerk II, Institute of Chinese Studies
Mr. Kwok Shung-chi	Telephone Operator, Central Office Support Service
Mrs. Lam Ho Hing-wah	General Clerk I, Registration Section
Mrs. Lee Huen So-ping	Senior Library Assistant, United College Branch Library
Mr. Li Meng-jinn	Library Assistant I, University Library System
Mr. Ling Tat-hung	Office Assistant, College Office, United College
Mr. Lo Chi-hung	Senior Library Assistant, University Library System
Mrs. Lo Mak Hau-chong	General Clerk II, Science Centre Office
Mr. Ng Kwok-tung	Office Assistant, College Office, Chung Chi College
Mr. Poon Shung-jack	General Clerk I, Faculty Office of Business Administration
Mr. Tse Hing-chuen	Office Supervisor, School of Continuing Studies
Mr. Tse Siu-fai	Office Assistant, College Office, United College
Mr. Wong Sek-heng	Technician, Dept. of Biochemistry

Twenty-nine staff members were honoured on 5th March with Long Service Awards by the University in recognition of their 25 years of service to the University.

Prof. Charles K. Kao, the vice-chancellor, officiated at the award presentation ceremony held at the University Guest House.

Some of the honorees talked to *CUHK Newsletter* about their feelings on this memorable occasion; some wrote us little pieces about their work on campus; and some went to great lengths to dig out old photographs which had special meaning to them for publication in the *Newsletter*. We thank them for their contributions and will share their reminiscences with our readers in the June and July issues.



## Paintings by Fine Arts Students and New Acquisitions of the Art Gallery on Display

More than 80 paintings by fine arts students from Mainland China, Taiwan and Hong Kong are now displayed at the west-wing gallery of the Art Gallery. The exhibition will last until 15th May 1994.

This is the first time that works of art by students from the three places have been exhibited together in Hong Kong. Jointly organized by the University's Department of Fine Arts and the Art Gallery, the exhibition features paintings in both Chinese and Western media by students from the Central Institute of Fine Arts, the Nanjing College of Arts, the China National Academy of Fine Arts, Sichuan Fine Arts Institute, Guangzhou Academy of Fine Arts, the Fine Arts Department of National Taiwan Normal University, the Fine Arts Department of Chinese Culture University, the Swire School of Design of the Hong Kong Polytechnic, and the Department of Fine Arts of CUHK.

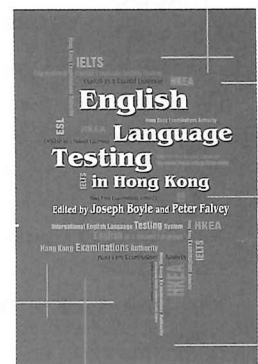
At its east-wing gallery, the Art Gallery has staged another exhibition on its new acquisitions. Large items of different materials have been selected for display, including bronze vessels of the Epoch of Spring and Autumn, pottery ox and ox-cart of Han, buddhist stone stele of Northern Zhou, pottery funeral figurines of Sui and Tang, rubbings of Tang epitaphs and sarcophaguses, and stone, porcelain and wooden statues of Song to Qing periods. All are welcome.



## New Publications of The University Press

The following books will be sold at a 20 per cent discount to staff members at the University Bookshop, John Fulton Centre.

- *Student Counselling* (revised edition) (in Chinese), by Betty L. L. Lai Yau, 346 pages, paperback, HK\$55.
- *English Language Testing in Hong Kong*, edited by Joseph Boyle and Peter Falvey, 384 pages, paperback, HK\$240.



## Personalia

Information in this section can only be accessed with [CWEM password](#).



KNOW  
YOUR  
RIGHTS  
AND  
BE  
PROTECTED

**An interview on insurance coverage for University employees**

*The occurrence of accidents and injuries is relatively rare on a university campus, where most employees work in a teaching or desk-bound environment.*

*However, unhappy incidents in which staff members sustain grave bodily harm are known to have happened, for instance in the laboratories and on construction sites. While the University has always urged those in its employ to take full safety precautions at work, it also deems it its duty to provide for a comprehensive insurance coverage for all its staff. To enable members of the University to know more about the insurance scheme, the CUHK Newsletter recently interviewed the scheme's two subject officers, Mr. Patrick Yiu, senior assistant bursar at the Business Section of the Bursary, and Mr. K. C. Yuen, senior assistant secretary at the Personnel Office.*

*The major features of the scheme are given below, but both Mr. Yiu and Mr. Yuen and their colleagues are happy to entertain any request for further information from staff members of the University.*

○ CUHK Newsletter    □ Mr. K. C. Yuen    ■ Mr. Patrick Yiu

**Double Protection**

- As an employee of the University, I am not at all familiar with the insurance coverage I am entitled to. Could you briefly introduce it to me?
- All employees of the University are entitled to the protection defined by the *Employees' Compensation Ordinance* of the Hong Kong Government. Furthermore, when a staff member is to be on official duty outside Hong Kong, he or she may apply for *Overseas Coverage*, which provides for insurance against personal injuries and damages. The University pays the premium for both types of protection schemes.
- Are part-time employees entitled to the protection offered by these two schemes?
- All part-time workers formally employed by the University are covered by the *Employees' Compensation* scheme. They are however not entitled to apply for *Overseas Coverage*.

**When You are in Hong Kong**

- Under what circumstances may an employee make claims for insurance benefits?



□ Any employee who suffers injury by accident arising out of and in the course of his employment will be awarded legally-provided medical costs by the University. In case of permanent incapacity, or death, then compensation derived from the University's staff insurance policy will apply.

○ What are the rates of compensation?

□ The amount of compensation depends on the claimant's age, salary, and the degree of permanent incapacity, or whether it is a case of death. According to legislations currently in force, the maximum compensation for an employee who dies while on official duty is HK\$1,260,000, while an employee who has sustained permanent total incapacity may claim as much as HK\$1,440,000. (Full compensation rates see table)

○ If an employee sustains an injury while on the way to work, or while on overtime work, will he or she be entitled to medical costs and compensation?

■ An employee who is on the way to work, literally speaking, has not yet commenced his or her official duty. Therefore such an employee is not entitled to the above mentioned benefits under normal circumstances, and so far there has been no precedent case of such a claim. However the University has reached an agreement with its insurance agent to extend insurance coverage to staff members who travel to and from work by University-arranged transport, eg. the staff buses. It can only be said here, with regard to employees in transit in general, that anyone who is a victim of an accident involving a means of transport may always claim the relevant type of insurance benefits or compensation from the individual or organization concerned. As regards injuries sustained outside normal hours of work, consideration to claims will be given only after the head of the unit concerned is able to confirm that the claimant is about the University's business and not his or her own affairs at the time the accident occurs.

### When You Are Outside Hong Kong

○ Is compensation available to those who sustain injuries outside Hong Kong?

■ The University has made arrangements for compensation benefits to be extended to employees on official duty outside Hong Kong. However, medical benefits for staff members who suffer injuries outside Hong Kong while on official business is subject to certain restrictions, as approved medical standards vary from place to place. Furthermore, the University is not liable to pay compensation if their injury is sustained not as a result of

### Employees' Compensation

Summary of Compensation Rates (1.1.94)

	Amount of Compensation (HK\$)	
	Maximum	Minimum
Death	1,260,000	219,000
Permanent total incapacity	1,440,000	248,000
Constant attention allowance	297,000	
Burial and medical attendance expenses	12,000	
Minimum earnings per month		2,250
Cost of supplying and fitting a prosthesis or surgical appliance	24,000	
Cost of normal repair and renewal of a prosthesis or surgical appliance	74,000	
Daily rates for medical expenses		120

official business, or outside the hours of official duty.

○ What should they do then to ensure better coverage?

■ The *Overseas Coverage* mentioned earlier is a complement to the compensation package required by law. *Overseas Coverage* involves an insurance policy providing a relatively broad coverage against injuries sustained whether on or outside University business. It also covers medical costs and compensation for permanent or temporary incapacity, loss of limbs and other bodily functions, and death.

○ As the premium for *Overseas Coverage* is paid for by the University, I would like to know who may qualify for this scheme.

■ Any employee aged between 21 and 70 years who are due to leave Hong Kong on an approved official University duty may apply to the Business Section for an *Overseas Coverage* insurance policy. But those who are aged 65 or above will need to furnish proof of their physical fitness. If need be, the Business Section will be glad to offer advice.

○ But how about those who are below 21 or above 70 who go abroad on University business?

■ These would be very rare cases. When they occur, the University will seek coverage for such personnel by purchasing Blue Cross travel insurance policies: these are policies which allow for greater flexibility with regard to the age of the persons insured.

## Definition of Official Duty

- How is official duty defined?
- The Staff Handbook (Terms of Service A and equivalent staff, 1990 version) defines official duty as engaging in or carrying out academic and other duties (eg. as head or member of an academic exchange delegation) outside Hong Kong, designated by a competent authority within the University as such and approved by AAPC.
- Wouldn't it take a long time for a request for *Overseas Coverage* to be processed, if AAPC approval must be obtained beforehand?
- The University has decided, from February 1994 on, to delegate the authority of determining whether a mission or duty abroad is an official duty to the most senior officer responsible for the academic or administrative unit concerned, ie, the vice-chancellor, the pro-vice-chancellors, and the faculty deans. This new decision will certainly help to expedite applications for *Overseas Coverage*.
- If an official trip abroad must be made by an employee within a short time, meaning that there is inadequate time for him or her to go through the usual procedure, would it be possible for the University to arrange for his or her *Overseas Coverage* nevertheless?
- Given the fact that the onus of approving official duties abroad has now been delegated, the situations you mentioned will be greatly reduced. However, in a genuinely urgent case, it is still possible for the staff member concerned to arrange for personal insurance through the University, with the understanding that if the staff member's application for *Overseas Coverage* is not approved, then he or she must reimburse the University for the insurance premium.

## Maximum Compensation for Death Overseas

- What are the rates payable under the *Overseas Coverage* scheme? In the case of a University employee who sustains injury and dies while on official duty abroad, how much can his or her beneficiary expect to receive?
- According to arrangements endorsed by the AAPC in February 1994, the designated beneficiary of an employee who dies while on official duty abroad may receive compensation roughly equivalent to 36 months' pay for a non-clinical lecturer at top point of his salary scale. In February 1994 terms this amounts to about HK\$1,890,000. This is on top of the maximum HK\$1,260,000 that can be claimed under the *Employees' Compensation* scheme. So total compensation may be as

high as HK\$3,150,000.

- How may an employee who is on official duty abroad extend his or her *Overseas Coverage* if work requires him or her to stay overseas longer than originally declared?
- The staff member may have the insurance policy extended by informing the Business Section direct, or request his or her head of unit to notify the Business Section while applying for extension of leave. In case the staff member has not notified the Business Section, then, upon return to Hong Kong and assuming that he or she has had no injury, the staff member must still report the extension of tour abroad to the Business Section, so that the section may retrospectively extend the insurance policy. This is to establish the University's good faith in paying for the premium in full, and to stem any possibility of claims being stalled by the insurance companies.
- If an employee planning to have a holiday overseas is asked by his or her head of unit to conduct some official business abroad, can he or she seek *Overseas Coverage*? And, if yes, how?
- For as long as the business abroad is an approved official duty, then the party concerned may request the Business Section to make the necessary insurance arrangements. It goes without saying, however, that the University will pay only for those days when the staff member concerned is actually on official duty and that the rest of the premium must be at the expense of the staff member.

## How Frequently Are Insurance Policies Reviewed?

- Under what circumstances will the University review existing policies and measures regarding staff insurance? When did the last review take place? Did it have anything to do with the unfortunate incident in September 1993 when a University employee died while on official business in China?
- The Business Section has spared no efforts in improving various insurance policies applicable to University personnel. Such efforts have been ongoing and therefore not necessarily related to any particular incident. As a matter of fact, the section conducted a comprehensive review as early as June 1990, and the major result of that exercise was an extension of staff insurance coverage from Hong Kong to the world. The next comprehensive review began in June 1993, with the assistance of professional personnel from Jardine Insurance. That was

a highly productive exercise in which every insurance policy was scrutinized, the compensation and scope of coverage enlarged, and premiums were lowered. By early November 1993 the Business Section had written to all teaching and administrative units, explaining the various insurance policies that the University would take out for its staff and property. Following this the section will continue to assist various departments in procuring better security for their staff. Colleagues who are in need of further information are welcome to contact the Business Section.

### Have You Named Your Beneficiary Yet?

○ What would be the University's advice to its employees

with regard to their rights and privileges?

■ Colleagues who are members of the Staff Superannuation Scheme would find it in their advantage to file with the University the names of the beneficiaries in regard of their scheme benefits in case they unfortunately pass away while members of the scheme. Without this, the pay-out of superannuation benefits will be subject to probate procedures as required by law, which invariably take quite a bit of time. Generally speaking every new staff member will be requested to file the name of the designated beneficiary as he or she joins the scheme. For those who have not yet done so, or who wish to make changes to information previously supplied, please contact the Bursary as soon as possible. ○

■ Dr. Lam Kin Che, senior lecturer in geography, has been appointed by HE the Governor as a member of the Town Planning Appeal Board and the Advisory Council for the Environment for two years from 18th November 1993 and 1st January 1994 respectively.

■ Prof. Natalis Yuen, honorary professor of the Department of Community and Family Medicine, has been appointed by HE the Governor as a member of the Police Complaint Committee for two years from 1st March 1993. Prof. Yuen has also been reappointed member of the Council of

City Polytechnic of Hong Kong for one year from 1st January 1994.

■ Dr. Francis W. L. Lee, field instructor

### Service to the Community and International Organizations

in social work, has been invited to serve as a member of Academic Advisory Board of Caritas Francis Hsu College from 1st January 1994 to 31st August 1995.

■ Dr. Youlian Hong, lecturer in sports science and physical education, has

been invited to serve as an Honorary Consultant of the Sports Science Department of the Hong Kong Sports Institute for two years from 1st April 1994.

■ Mr. Hardy S. C. Tsoi, manager of Sir Run Run Shaw Hall, received a 10-year Outstanding Achievement Award presented by the Hong Kong Federation of Drama Societies.

*(All information in this section is provided by the Information and Public Relations Office. Contributions should be sent direct to that office for registration and verification before publication.)*

## CUHK NEWSLETTER

### We welcome your contributions

1. Items for the next issue (mid-May 1994) should reach the Editor by **27th April 1994**.
2. All contributions and suggestions should be sent to the Editor, CUHK Newsletter, c/o the Publication Office, University Secretariat, The Chinese University of Hong Kong (tel. 6097297; fax. 6035503).
3. Contributions should bear the writer's name and contact telephone number, and may be published under pseudonyms. Articles without Chinese translations will appear in the English version of the Newsletter only. No anonymous letters will be published.
4. The Editor reserves the right to reject contributions and to edit all articles for reasons of clarity, length or grammar. Those who do not wish to have their articles amended should indicate clearly in writing.
5. No part of this Newsletter may be reproduced without the written consent of the Editor.
6. This publication has a circulation of 1,600 and is primarily intended for staff members of CUHK. Copies are also sent to local educational institutions and individuals associated with the University. Those who wish to be included on the mailing list please contact the Newsletter direct.

Published by the Publication Office, The Chinese University of Hong Kong

Editor : Amy K. Y. Leung Assistant Editors : Lawrence Choi; Florence Chan Graphic Artist : Stella P. C. Lai