

# The Library Extension Project: An Update

## 圖書館新翼項目的最新發展

Feb 4, 2009  
Library User Group Meeting



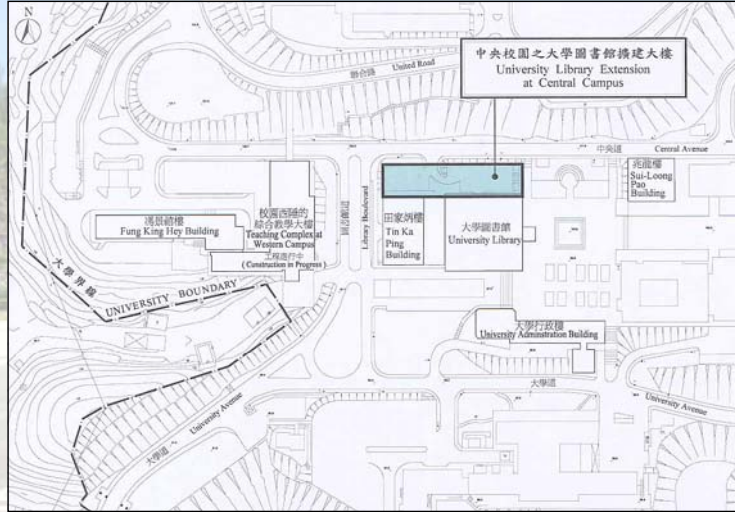
## Background (背景)

1. A key decision made by the University in early 2005: classroom, laboratory, library and student amenities are the top priorities of the University in preparation for 334 (大學於2005年曾作出一個重要決定: 將增加教室、實驗室、圖書館及學生活動中心空間訂為大學預備三三四學制的優先考慮事項)
2. A general consensus among the University management and the University Library System that a library extension is more desirable than a new independent library for service effectiveness and operational efficiency in 2012. (無論是服務質素以至營運效率, 大學和大學圖書館系統都認同擴建原來的圖書館比建造一座全新獨立的圖書館優勝)
3. Various options in the design of the Library Extension have been considered. (曾考慮多個圖書館擴建的設計)

## Background (背景)

4. It has been the University's policy to preserve the University Square, in particular the Beacon, the Forum and the 'Bushes'. Would consider any reasonable options/methods that would minimize the impact on the University Square during the construction of the basement. (大學的一貫立場是大學廣場不能有任何改動, 特別是烽火台、惠園、「灌叢圖案」。任何能盡量減低工程對大學廣場影響的合理方案, 大學都會考慮。)
5. Any changes in the building site implies that the project will be substantially delayed, well beyond 2012. This is a 334 project which has to be completed by fall 2012. (更改擴建地點會令項目嚴重受阻, 無法在2012年完成。惟圖書館擴建工程是「三三四」項目, 須在2012年秋季前竣工。)

# Initial Layout Plan (初步規劃)



University Library Extension at Central Campus

# Initial Designs (初步設計)



Day View  
(日景)



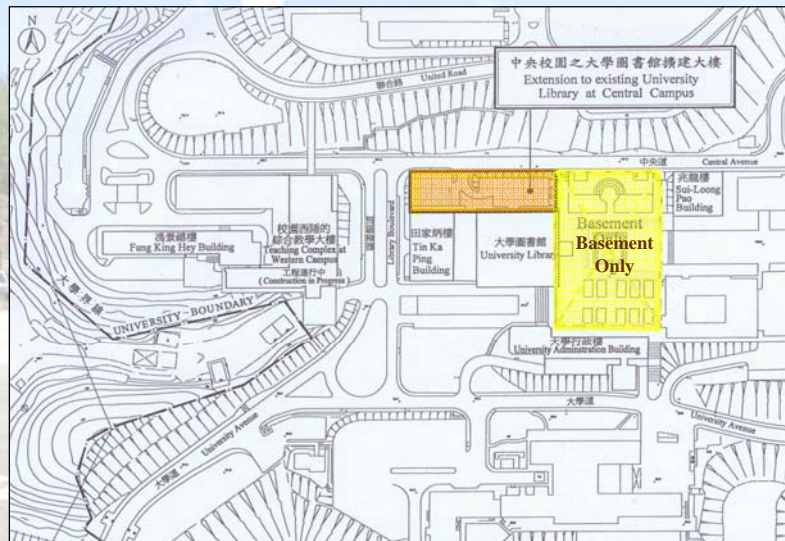
Night View  
(夜景)

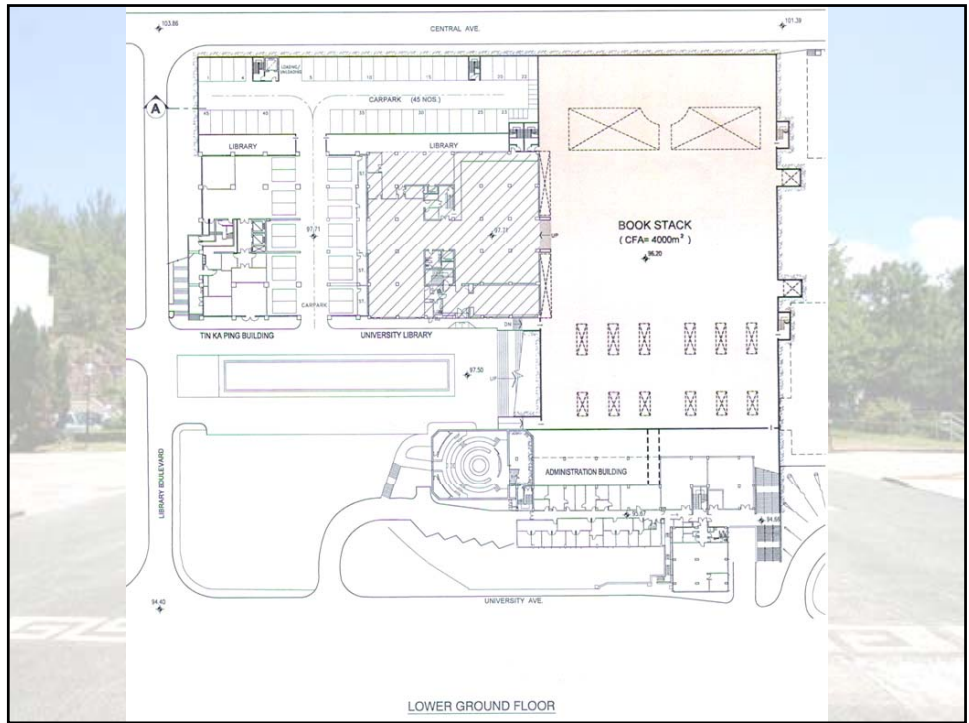


## Library Extension (圖書館新翼)

- 6,100 sq.m. NOFA (淨作業樓面面積)
- Book stacks (書架)
- Reading rooms (閱讀室)
- Circulation areas (借書處)
- Learning commons (1,400 sq.m.)
- Offices (辦公室)

## Revised Layout Plan (修訂後的規劃)





## Communication Sessions (交流會)

Nov 26	Session with student leaders (學生領袖)
Dec 1	Session with College admin. Staff (書院行政職員)
Dec 2,5	Open sharing sessions with univ. community (大學社群公開交流會)
Dec 13	Video conferencing session with alumni organized by the Convocation (與校友進行視象會議)
Jan 9,16,23	Briefing on 3+3+4 building projects in NA, UC and CC assemblies (就大學 334 建築項目在新亞, 聯合及崇基書院的早會進行講解)
Feb 4	Library User Group Meeting (圖書館使用者小組會議)
Feb 6	Session with student leaders (學生領袖)
Feb 20	Session with postgraduates (研究生)
	Briefing on 3+3+4 building projects in SC assembly (就大學 334 建築項目在逸夫書院的早會進行講解)

## Summary of Major Opinions (主要意見摘要)

- Beacon should not be touched for its significant cultural, historical and sentimental value (烽火台具有文化, 歷史以及情感價值, 故不應觸動)
- Relocation of the beacon, forum and bushes and reinstatement of all of them after construction is acceptable (暫時遷移和建後重置烽火台、惠園、「灌叢圖案」是可以接受的)
- Library extension versus New library at Shaw College (興建圖書館新翼或在逸夫書院興建新圖書館)
- More open and transparent (持更開放態度和增加透明度)

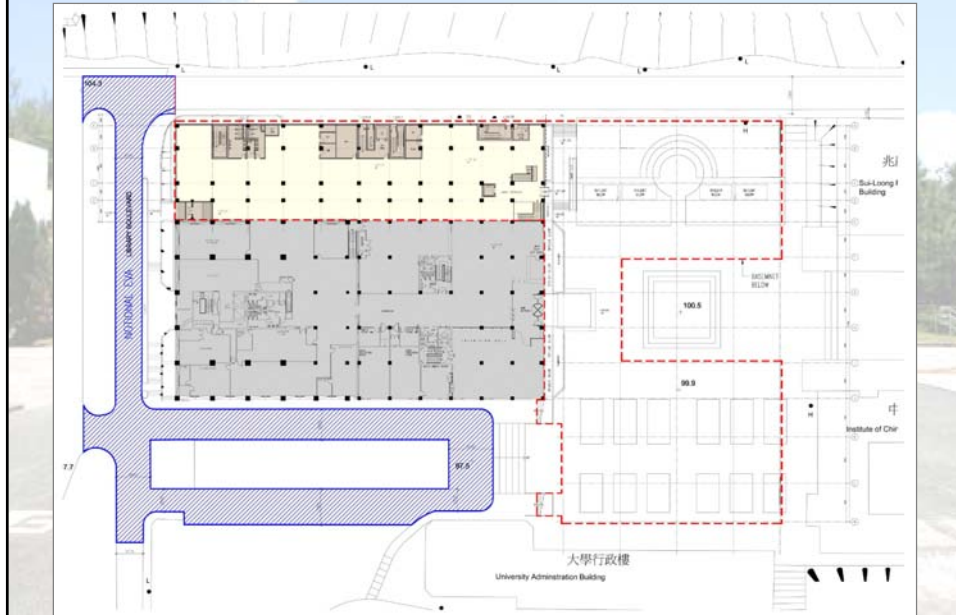
## Options Considered (已考慮的方案)

1. Use of entire Univ. Square as a basement for the Library Extension (在整個大學廣場的地下部分進行擴建)
2. Beacon untouched using horizontal pipe jacking technique; with retaining wall constructed surrounding the Beacon (利用橫向圓筒樁技術，不觸動烽火台以及在烽火台周圍築起防護牆)

## Options Considered (已考慮的方案)

3. Beacon untouched with retaining wall constructed surrounding it (Island Option)  
("小島"方案 - 不觸動烽火台以及在烽火台周圍築起防護牆)
4. Construction of the basement with the Beacon and the passage linked with the Mall untouched (U-shaped Option)  
("凹形"方案 - 不會在烽火台和連接大學廣場通道的地下部分進行擴建)

## The U-shaped Option (“凹形”方案)



## Factors to be Considered (考慮因素)

- Different opinions from the univ. community (大學社群的不同意見)
- Technical feasibility (技術上的可行性)
- Cost (成本)
- Area to be provided (新翼建成後的可用面積)
- Time involved in construction (建築所需時間)
- Meeting the need of 2012 (配合 2012 的需要)



## Phase I (第一階段工程)



## Phase II (第二階段工程)



## Upon Completion (工程完畢)



## Pros (正面)

- Beacon untouched and accessible during construction (工程不會觸動烽火台, 烽火台在施工期間仍可使用)
- Less area for excavation in the Univ. Square (大學廣場較少面積會被挖掘)
- No need to consider temporary placement of the Beacon (不用考慮烽火台的臨時處置問題)

## Cons (反面)

- Reduction in CFA of 600 sq.m.  
(減少600平方米的建築面積)
- Additional cost in building retaining wall of 65 m long (建造65米防護牆的額外支出)
- Basement divided into two parts  
(圖書館地庫新翼會被分成兩個部分)

## Work in Progress (進行中的項目)

- Ground investigation (drillholes and trial pit excavation) will be commenced from Feb 9 (not the actual construction)  
土地堪測將會在二月九日開始 (並非正式建築工程)
- Survey of Bushes and Forum  
勘測惠園 及「灌叢圖案」

## Work in Progress (進行中的項目)

- Architectural consultant and CDO working closely on the design of the building  
建築顧問和校園發展處密切研究新翼的設計
- Plans to be submitted to Legco (準備提交計劃到立法會)
- Communication (意見交流)

Q&A