



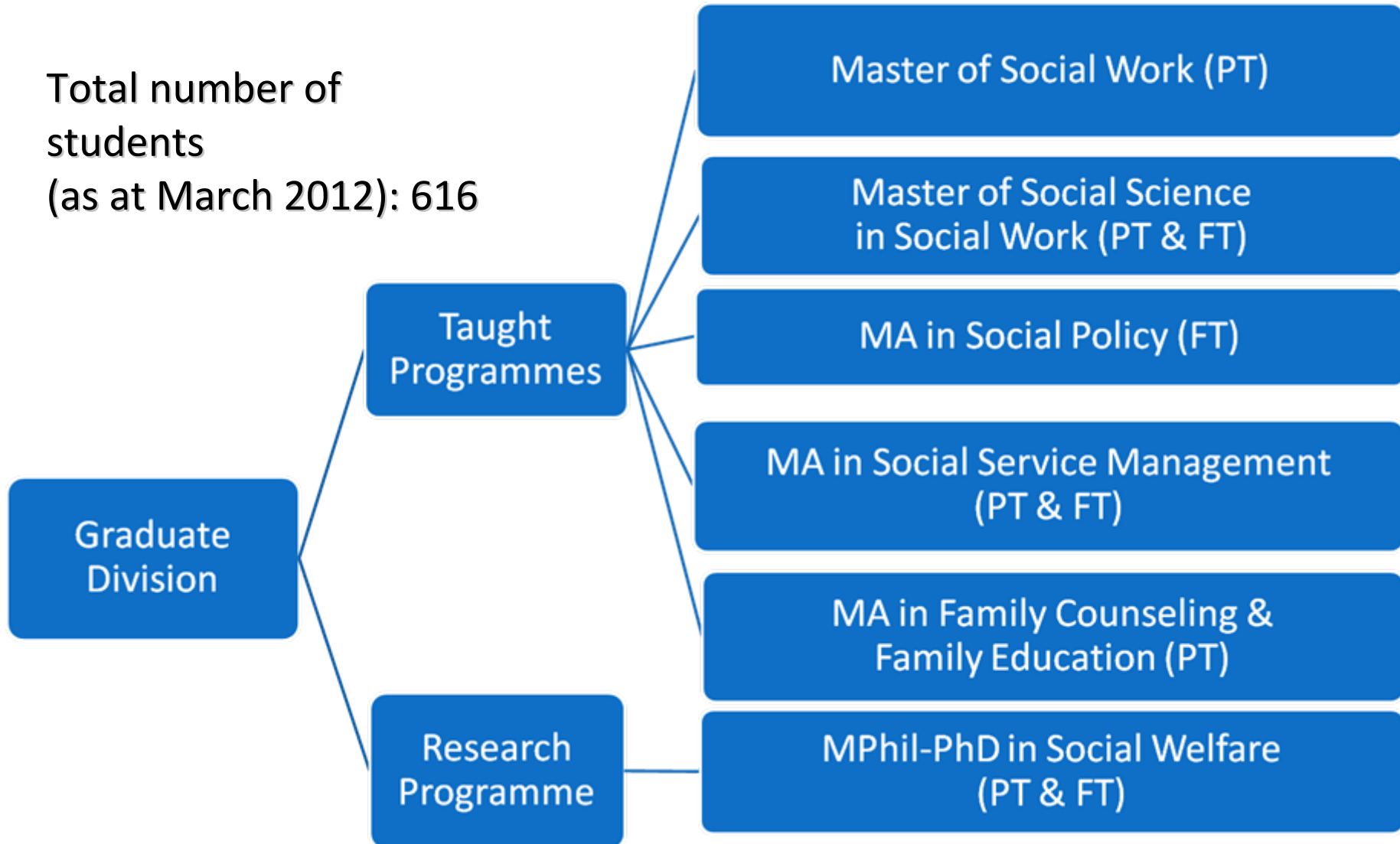
The Chinese University of Hong Kong
Department of Social Work
Graduate Division

Advisory System for Postgraduate Students

Prof. Steven, S.Y. Ngai
(Graduate Division Head)

Overview of Graduate Division

Total number of students
(as at March 2012): 616



Programme Director System

- Programme Director of each Programme cooperates with Departmental Chairperson & Graduate Division Head to take the lead of the Programme in:

Monitoring teaching & learning via Quality Assurance Mechanism

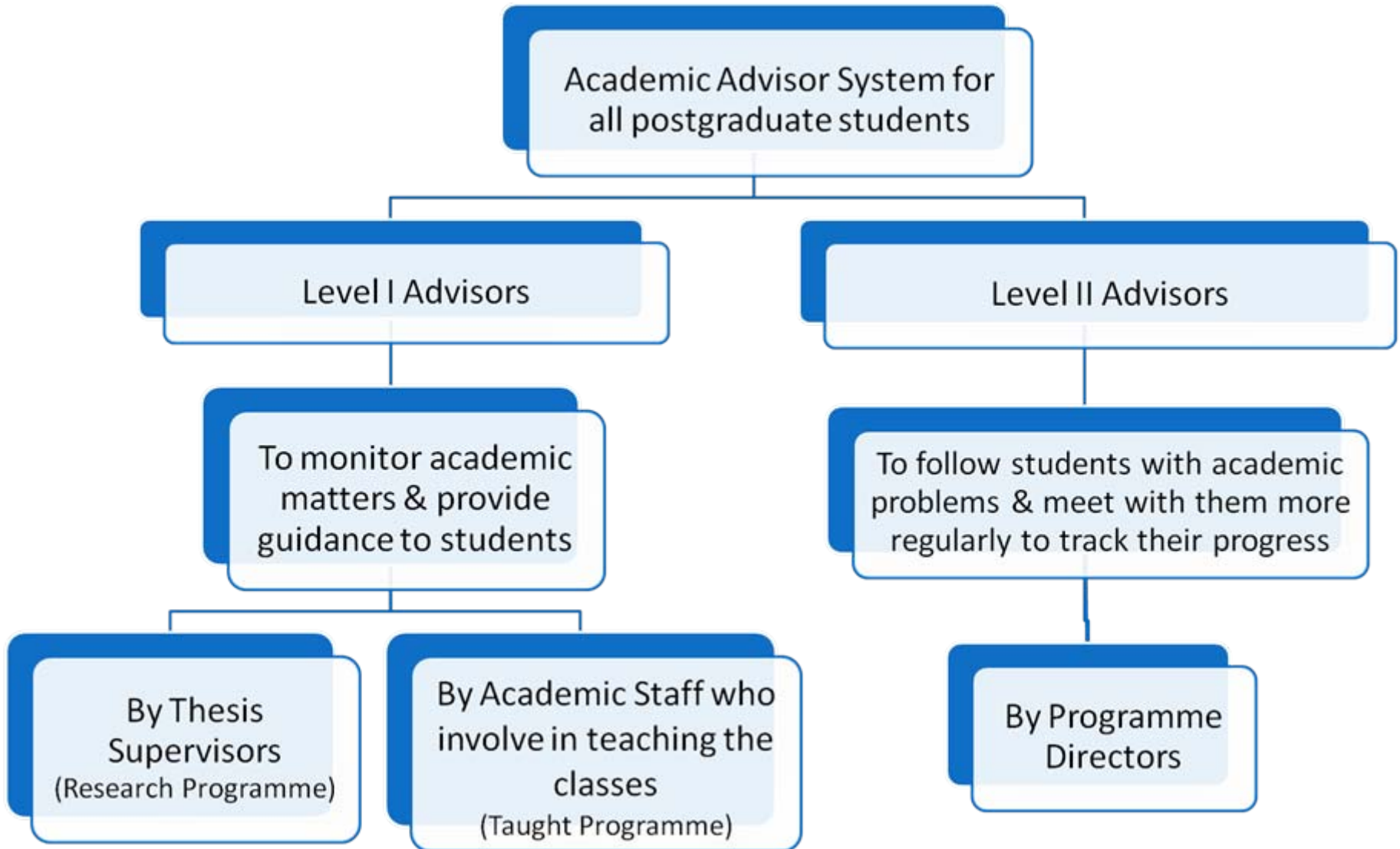
Taking note of special situations of students & Following-up via Academic Advisor System

A. Staff-Student Consultative Meetings (Example of Quality Assurance Mechanism)

- Students & staff exchange views on curriculum design, teaching format & learning processes, etc.
- Students share study & living experience



B. Academic Advisor System



Individual Teachers

- Apart from Academic Advisory System, all other teachers also
 - pay individualized attention to students in their class;
 - provide academic guidance & personal support on their study;
 - report to Programme Director if they find students with special situations that need further follow-up.



Logistical Support: Project Co-ordinator for Each Programme

- Project Co-ordinator assists Programme Director in overseeing, monitoring & developing the programme. Duties include:

Co-ordinate administrative matters relating to students' study

Provide information & guidance to non-local students for settling down in HK

Organize educational, social & recreational activities for students

Coordinate & encourage students to join student development activities

Student Development Activities



Orientation Programme for ALL students

- Students can meet Programme Directors, course instructors, current students & alumni at sharing session for individual programmes



Student Orientation and Guidance for Non-local Students

- To assist non-local students in getting used to the study environment in HK, various activities are organized including:
 - Orientation Programme for non-local students
 - Guidance for registration
 - Cantonese Learning Group



Leadership Training Programme – C Vision



- Leadership Training Programme for students' personal growth and contribution to society

- A range of activities are organized including camps, service-learning opportunities & seminars, etc.



Overseas Study Tours



Finland Study Tour



Taiwan Study Tour



Shandong Study Tour



Agency Visits

Visit to Fantastic Café –
a Social Enterprise Project



Visit to Dialogue in the Dark



Visit to Ma On Shan Elderly
Community Center

Mentorship Scheme



- Organized by Social Work Alumni Association
- All postgraduate students are eligible to join

- Each participating alumnus (mentor) pair up with 2-3 students' participants



Conclusion



Different parties collaborate with each other & put effort into establishing a well-developed Advisory System for

Students

**THE END.
THANK YOU!**