

新聞稿 PRESS RELEASE

To News Editors
For Immediate Release

3 November 2016

CUHK Releases Hong Kong Quality of Life Index 2015 Quality of Life Declines Visibly

The Centre for Quality of Life of the Hong Kong Institute of Asia-Pacific Studies at the Chinese University of Hong Kong (CUHK) released the 'CUHK Hong Kong Quality of Life Index' 2015 today (3 November). The overall score declined in 2015. The Health, Social and Economic sub-indices decreased.

According to the latest 'CUHK Hong Kong Quality of Life Index' (the Index), the overall score in 2015 was 102.57, a drop of 1.0 points from the score in 2014 (103.57). The result indicates that the quality of life in Hong Kong generally declined in the past year. The Economic sub-index has decreased for the ninth consecutive year; the Health and Social sub-indices worsened (Appendix 1).

The Index consists of 23 indicators that are grouped into five sub-indices: Health, Social, Culture and Leisure, Economic, and Environmental (Appendix 2). The indicators are selected according to the coverage, representativeness, measurability, and importance to the quality of life of Hong Kong people. The higher the indicator scores, the better it performs.

Compared with 2014, the Culture and Leisure sub-index and the Environmental sub-index have improved in different degrees in 2015, while the decline of Health, Social and Economic sub-indices has continued (Appendix 3). Particularly, the Economic sub-index dropped to 13.67, with a significant decrease of 1.3 points. The Health sub-index dropped 0.87 points to 23.91, whereas the Social sub-index fell 0.36 points to 26.91. The result shows that the economic, health and social aspects of the quality of life in Hong Kong worsened in the past year.

12 out of the 23 indicators worsened in 2015 (Appendix 4). Noticeable decline in public expenditure on health and housing affordability ratio, with 19.84% and 18.57% decreased between 2014 and 2015, respectively. Specifically, the housing affordability ratio dropped to a record low, a result indicating that housing has been continuously less affordable to Hong Kong people in 2015. Along with this, real rental index and public expenditure on education dropped 10.71% and 9.12% between 2014 and 2015. Both were at the lowest point since the Index was launched thirteen years ago. The decrease of the remaining indicators was relatively mild, ranging from 0.24% to 6.79%.

Compared with 2014, 11 out of the 23 indicators improved in 2015 (Appendix 5). The overseas travel index and recreation and sport activities participation index significantly improved, with 12.25% and 11.7% increased between 2014 and 2015, respectively. Air quality index were much better than 2014, with an increase of 7.29%, while the increase of remaining indicators was relatively mild, ranging from 0.23% to 1.97%.

The ‘CUHK Hong Kong Quality of Life Index’ was designed by the Faculty of Social Science in 2003. This composite index is intended to measure and keep track of the quality of life in Hong Kong in the 21st century, and to provide policy makers and the community with a useful reference tool. It also aims at raising the awareness of enhancing the quality of life of Hong Kong people. To continue this mission, in 2006, the Centre for Quality of Life was set up by the Hong Kong Institute of Asia-Pacific Studies, CUHK to conduct on-going quality of life research and release the latest Index annually. Since 2012, the Centre for Quality of Life of the Hong Kong Institute of Asia-Pacific Studies has also compiled the ‘MTR-CUHK Youth Quality of Life Index’. The results of these two indices can be used for comparison and cross-reference.

2002 was the base year of the ‘CUHK Hong Kong Quality of Life Index’, and the value of the Index for that year was set at 100. If the value of the Index of a subsequent year is above 100, it means that the quality of life in Hong Kong in that year is better than that of 2002. If the value of the Index is below 100, it reveals that the quality of life in Hong Kong in that year is worse than that of 2002. If the value of Index is 100, it indicates that the quality of life in Hong Kong in that year is the same as that of 2002.

In order to measure and monitor more aspects of the quality of life in Hong Kong, based on the stage of social development, the research team of the Centre of Quality of Life of the Hong Kong Institute of Asia-Pacific Studies will refine the composition and calculation methodology of the Index from time to time. From last year onwards, the number of sub-indices of the ‘CUHK Hong Kong Quality of Life Index’ has been increased from three to five, namely, **Health, Social, Culture and Leisure, Economic and Environmental** sub-indices. The number of indicators included in the Index has been increased from 21 to 23.

For more information on the ‘CUHK Hong Kong Quality of Life Index,’ please visit the website of the Centre for Quality of Life, Hong Kong Institute of Asia-Pacific Studies, CUHK: www.cuhk.edu.hk/hkiaps/qol.

Media enquiries: Prof. Wong Hung, Director of the Centre for Quality of Life, Hong Kong Institute of Asia-Pacific Studies, CUHK (Tel: 3943-7510 or Email: hwong@cuhk.edu.hk)

Appendix 1: CUHK Hong Kong Quality of Life Index ^{Note 1}

	2002 Base year	2006	2007	2008	2009	2010	2011	2012	2013	2014	2015	2015 compared with 2014
Health sub-index												
1. Life expectancy at birth (years)	4.35	4.40	4.40	4.40	4.42	4.43	4.45	4.46	4.48	4.48	4.50	Better
2. Public expenditure on health	4.35	3.47	3.21	3.25	3.65	3.57	3.40	3.67	4.60	4.94@	3.96@	Worse
3. Average patient days @	4.35	5.17	5.13	5.21	5.23	5.32	5.28	5.34	5.15	5.26	5.23	Worse
4. Stress index ^	4.35	5.46	5.52	5.20	5.22	5.41	5.33	5.38	5.36	5.31	5.38	Better
5. General life satisfaction index ^	4.35	4.89	4.79	4.68	4.85	4.85	4.74	4.79	4.85	4.79	4.84	Better
Health sub-index	21.74	23.39	23.05	22.73	23.37	23.58	23.20	23.63	24.44	24.78	23.91	Worse
Social sub-index												
6. Freedom of speech index ^	4.35	4.28	4.18	4.19	4.19	4.25	4.26	4.32	4.29	4.11	4.05	Worse
7. Press criticism index	4.35	3.36	3.56	3.64	3.44	3.61	3.75	3.86	4.16	4.00	4.09	Better
8. Government performance index ^	4.35	7.63	7.94	5.66	6.28	6.01	5.11	5.62	5.20	5.01	4.67	Worse
9. Overall crime rate	4.35	4.12	4.19	4.35	4.39	4.52	4.55	4.60	4.78	5.08	5.18	Better
10. Public expenditure on education	4.35	3.87	3.37	3.38	4.84	3.51	3.36	3.57	3.84	3.62@	3.29@	Worse
11. Enrolment rate of the relevant age groups (age 17-20) for first-year-first degree places of UGC-funded programmes	4.35	4.73	4.79	4.76	4.76	4.79	4.96	5.17	5.27	5.45	5.63	Better
Social sub-index	26.09	27.99	28.03	25.98	27.90	26.69	25.99	27.14	27.54	27.27	26.91	Worse
Culture & Leisure sub-index												
12. Cultural programmes attendance index	4.35	3.35	3.43	2.71	2.46	2.55	2.42	2.49	2.43	2.31	2.23	Worse
13. Recreation and sport activities participation index	4.35	5.26	5.54	6.26	6.05	5.60	6.31	5.71	6.49	5.64	6.30	Better
14. Overseas travel index	4.35	4.94	5.23	5.26	5.35	5.73	5.95	6.44	7.06	7.51	8.43	Better
Culture & Leisure sub-index	13.04	13.55	14.21	14.23	13.86	13.88	14.67	14.63	15.97	15.46	16.96	Better
Economic sub-index												
15. Housing affordability ratio	4.35	3.13	2.23	1.45	0.94	-0.90	-2.03	-3.34	-4.54	-5.17	-6.13	Worse
16. Real rental index	4.35	4.27	3.88	3.44	4.16	3.42	3.08	2.96	2.74	2.80	2.50	Worse
17. Unemployment rate	4.35	5.92	6.38	6.52	5.64	6.21	6.69	6.74	6.74	6.78	6.76	Worse
18. Index of current economic conditions ^	4.35	6.22	6.63	4.63	4.74	5.46	5.03	5.10	5.44	5.79	5.75	Worse
19. Real wage index	4.35	4.27	4.29	4.32	4.30	4.27	4.80	4.88	4.89	4.77	4.79	Better
Economic sub-index	21.74	23.81	23.41	20.36	19.78	18.46	17.56	16.34	15.27	14.97	13.67	Worse
Environmental sub-index												
20. Air quality index	4.35	3.51	3.43	3.73	4.37	4.45	4.00	4.71	4.28	4.65	4.99	Better
21. Water index	4.35	4.72	4.72	4.77	4.91	4.92	4.78	4.99	5.06	4.99	4.77	Worse
22. Noise index	4.35	5.70	5.99	6.17	6.28	6.41	6.56	6.45	6.59	7.08	6.98	Worse
23. Recycle rate of municipal solid waste	4.35	5.46	5.46	5.84	5.91	6.22	5.74	4.65	4.39	4.37	4.38*	Better
Environmental sub-index	17.39	19.39	19.60	20.51	21.47	22.01	21.08	20.80	20.31	21.09	21.12	Better
CUHK Quality of Life Index	100.00	108.12	108.30	103.81	106.37	104.62	102.51	102.54	103.53	103.57	102.57	Worse

Note 1 The higher the indicator scores, the better it performs.

^ subjective index(data from telephone survey)

@ provisional figures

* forecasted figures

■ revised figures

Appendix 2: Composition of and Data for Compiling the CUHK Hong Kong Quality of Life Index

HEALTH SUB-INDEX

1. Life expectancy at birth (in years) refers to the expectancy of life at birth for males and females.
2. Public expenditure on health as a proportion (in percent) of the Gross Domestic Product (GDP).
3. Average patient days (per person) refer to the number of days stayed in hospitals for treatment per person.
4. Stress index refers to the stress that the Hong Kong people are facing (base rate = 100).
5. General life satisfaction index refers to the degree of satisfaction of Hong Kong people with their current lives (base rate = 100).

SOCIAL SUB-INDEX

6. Freedom of speech index refers to public attitude towards freedom of speech in Hong Kong (base rate = 100).
7. Press criticism index refers to the frequency of criticisms on the Hong Kong Corporations, the Hong Kong SAR Government, and the People's Republic of China Government by the press (base rate = 100).
8. Government performance index refers to the degree of satisfaction of Hong Kong people with the performance of Hong Kong SAR Government (base rate = 100).
9. Overall crime rate (per 1,000 population) refers to the total number of violent and non-violent crimes reported per 1,000 population.
10. Public expenditure on education as a proportion (in percent) of the Gross Domestic Product (GDP).
11. Enrolment rate of the relevant age groups (age 17-20) for first-year-first degree (FYFD) places of UGC-funded programmes (in percent).

CULTURE & LEISURE SUB-INDEX

12. Cultural programmes attendance index (per 1,000 population) refers to the number of attendances of indoor cultural programmes organized at the venues of the Leisure and Cultural Services Department per 1,000 population.
13. Recreation and sport activities participation index (per 1,000 population) refers to the number of participants of recreation and sport activities organized or subvented by the Leisure and Cultural Services Department per 1000 population.
14. Oversea travel index (per person) refers to the number of departures by the airport per person.

ECONOMIC SUB-INDEX

15. Housing affordability ratio refers to the annual average of affordable property price (i.e. average property price times 39.9 sq. feet, divided by monthly medium income times 12).
16. Real rental index refers to the real rental index of the Hong Kong property market.
17. Unemployment rate refers to the seasonally adjusted unemployment rate (in percent).
18. Index of current economic conditions refers to the public attitude towards the economic conditions in Hong Kong.

19. Real wage index⁽¹⁾ refers to the real wages for employees up to supervisory level (excluding managerial and professional employees) in all selected industry sectors.

ENVIRONMENTAL SUB-INDEX

20. Air quality index refers to the annual air quality of all general stations.
21. Water index refers to the percentage of the inland waters of Hong Kong graded as 'good' and 'excellent' by the monitoring stations.
22. Noise index (per 1,000 population) refers to the number of noise complaints received by the Environmental Protection Department and the Police Force per 1,000 population.
23. Recycle rate of municipal solid waste refers to the recycle rate of solid domestic waste, and commercial and industrial waste (in percent).

Notes:

- ⁽¹⁾ The real wage index is derived by deflating the nominal wage indices by the CPI(A).

Sources:

Stress index, general life satisfaction index, freedom of speech index, government performance index and index of current economic conditions are compiled based on the results of telephone survey.

Press criticism index is compiled based on the content analysis of six major local newspapers.

Data for all other indices are obtained from the government or related institutions.

Data for Compiling the CUHK Hong Kong Quality of Life Index

	2002	2003	2004	2005	2006	2007	2008	2009	2010	2011	2012	2013	2014	2015
Health sub-index														
1. Life expectancy at birth (years)	F: 84.5 M:78.5	F: 84.4 M:78.5	F: 84.8 M:79.0	F: 84.6 M:78.8	F: 85.5 M:79.4	F: 85.5 M:79.4	F: 85.5 M:79.3	F: 85.9 M:79.8	F: 86.0 M:80.1	F: 86.7 M:80.3	F: 86.4 M:80.7	F: 86.7 M:81.1	F: 86.9 M:81.2	F: 87.3 M:81.4
2. Public expenditure on health as a proportion (in percent) of the GDP	2.63	2.64	2.60	2.28	2.10	1.95	1.97	2.21	2.16	2.06	2.22	2.79	2.99@	2.40@
3. Average patient days @	1.40	1.25	1.18	1.12	1.14	1.15	1.12	1.12	1.09	1.10	1.08	1.14	1.11	1.12
4. Stress index ^	100.00	88.76	79.55	72.95	74.43	72.95	80.33	80.01	75.55	77.46	76.34	76.70	77.86	76.35
5. General life satisfaction index^	100.00	100.69	105.59	109.92	112.44	110.20	107.55	111.63	111.44	108.99	110.09	111.52	110.25	111.25
Social sub-index														
6. Freedom of speech index ^	100.00	101.25	100.28	101.43	101.60	103.92	103.53	103.54	102.23	102.08	100.73	98.64	94.53	93.04
7. Press criticism index	100.00	103.23	91.02	78.82	77.25	81.86	83.65	79.15	83.10	86.29	88.77	95.62	92.03	93.96
8. Government performance index ^	103.42	131.92	168.63	175.52	182.54	130.07	144.49	138.20	117.58	129.25	119.66	115.52	107.35	103.42
9. Overall crime rate (per 1,000 population)	11.25	13.13	11.99	11.37	11.83	11.67	11.25	11.13	10.81	10.74	10.61	10.14	9.35	9.09
10. Public expenditure on education as a proportion (in percent) of the GDP	4.06	4.40	4.32	3.86	3.61	3.15	3.15	4.52	3.28	3.14	3.33	3.58	3.38@	3.08@
11. Enrolment rate of the relevant age groups (age 17-20) for first-year-first degree places of UGC-funded programmes	17.00	17.70	17.60	18.00	18.50	18.70	18.60	18.60	18.70	19.40	20.20	20.60	21.30	22.00
Culture & Leisure sub-index														
12. Cultural programmes attendance (per 1,000 population)	253.28	194.36	181.72	190.24	195.03	199.67	157.73	143.03	148.40	140.74	144.79	141.28	134.74	130.19
13. Recreation and sport activities participation (per 1,000 population)	303.13	346.94	337.42	344.33	366.78	386.59	436.65	421.92	390.25	440.10	397.96	452.66	392.93	438.99
14. Oversea travel times	0.74	0.67	0.79	0.80	0.84	0.89	0.89	0.91	0.97	1.01	1.09	1.20	1.27	1.43
Economic sub-index														
15. Housing affordability ratio	4.60	4.43	5.30	6.11	5.89	6.85	7.67	8.20	10.16	11.35	12.73	14.00	14.67	15.68
16. Real rental index	97.91	88.67	94.10	103.61	99.64	108.49	118.24	102.04	118.80	126.40	129.23	134.22	132.72	139.61
17. Unemployment rate	7.34	7.93	6.76	5.55	4.69	3.92	3.68	5.17	4.20	3.39	3.31	3.30	3.24	3.28
18. Index of current economic conditions ^	76.55	81.32	99.95	109.75	109.48	116.70	81.55	83.40	96.22	88.50	89.72	95.74	102.01	101.24
19. Real wage index	107.43	107.59	106.35	105.71	105.55	106.10	106.65	106.26	105.53	118.65	120.58	120.83	117.88	118.33
Environmental sub-index														
20. Air quality index	2.24	2.60	3.00	2.72	2.67	2.71	2.56	2.23	2.18	2.42	2.05	2.27	2.08	1.91
21. Water index	74.40	75.60	76.90	80.80	80.80	80.70	81.70	84.10	84.20	81.80	85.40	86.60	85.40	81.70
22. Noise index (per 1000 population)	1.85	1.44	1.39	1.24	1.28	1.15	1.07	1.03	0.97	0.91	0.96	0.90	0.69	0.73
23. Recycle rate of municipal solid waste	36.30	40.82	40.46	43.09	45.59	45.62	48.76	49.30	51.95	47.94	38.85	36.61	36.48	36.34*

^ subjective index (data from telephone survey)

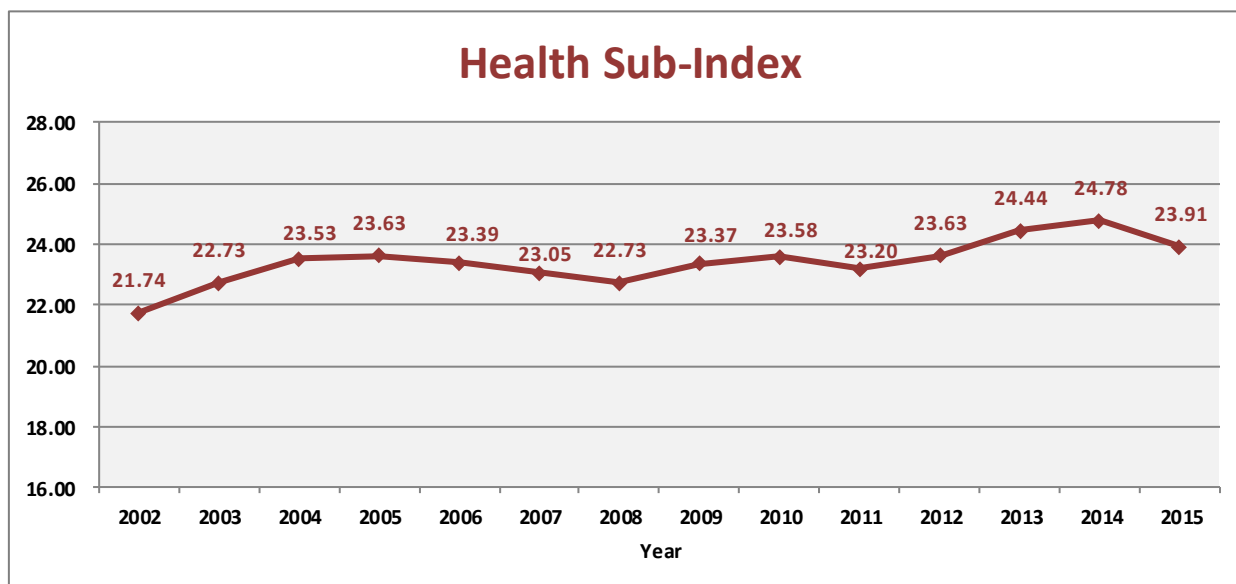
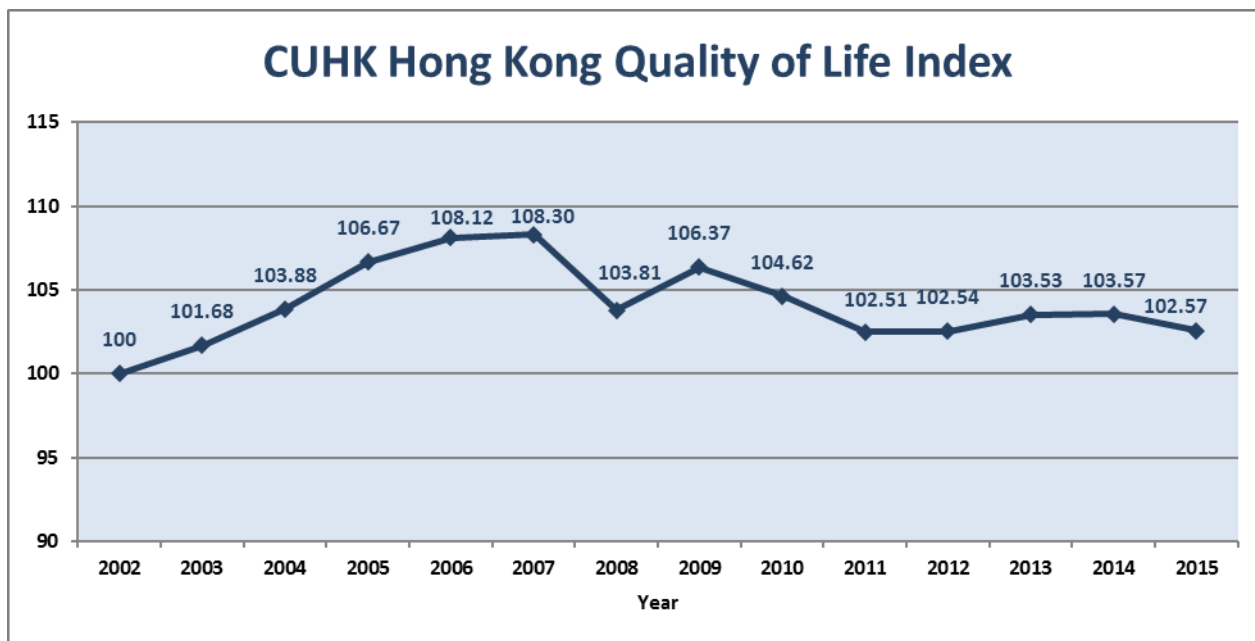
@ provisional figures

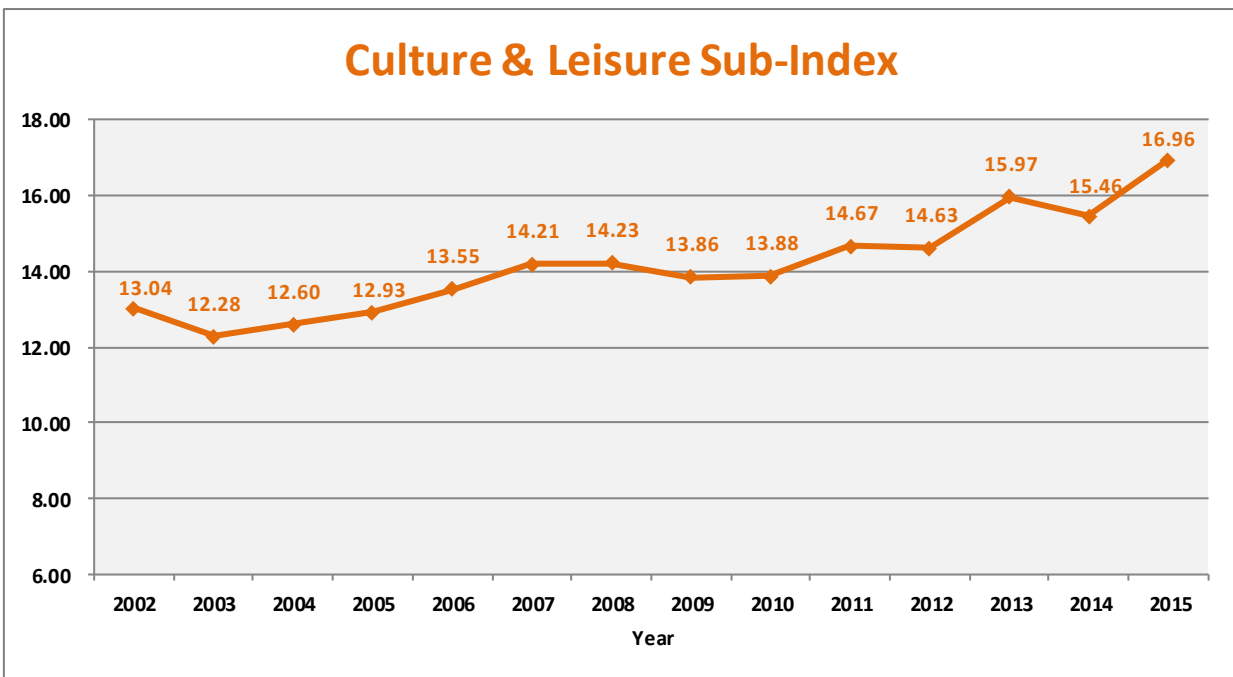
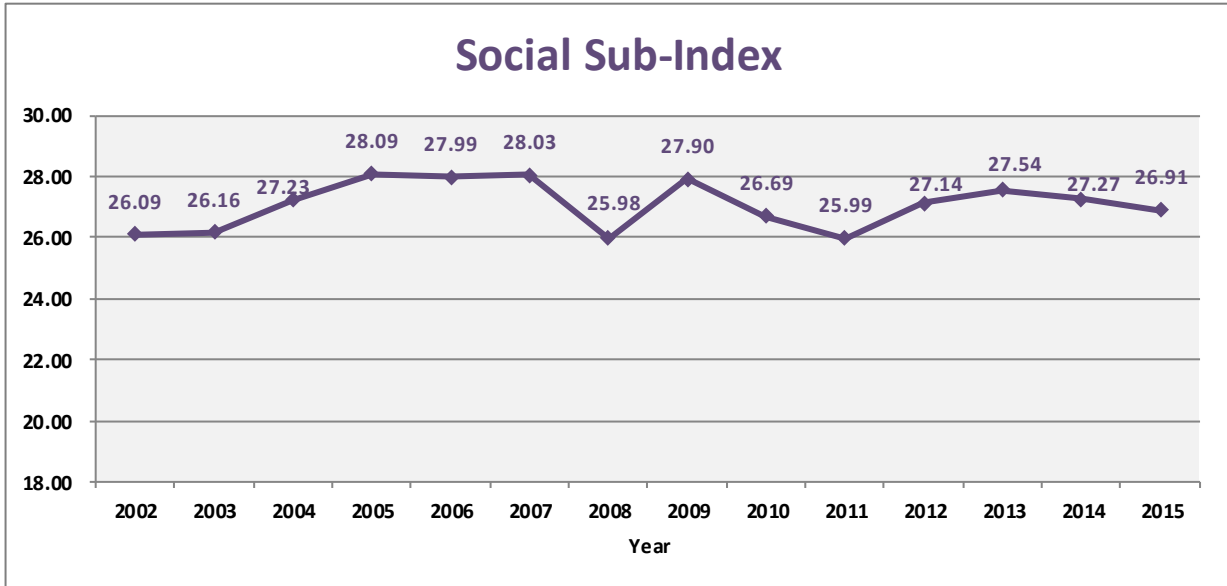
* forecasted figures

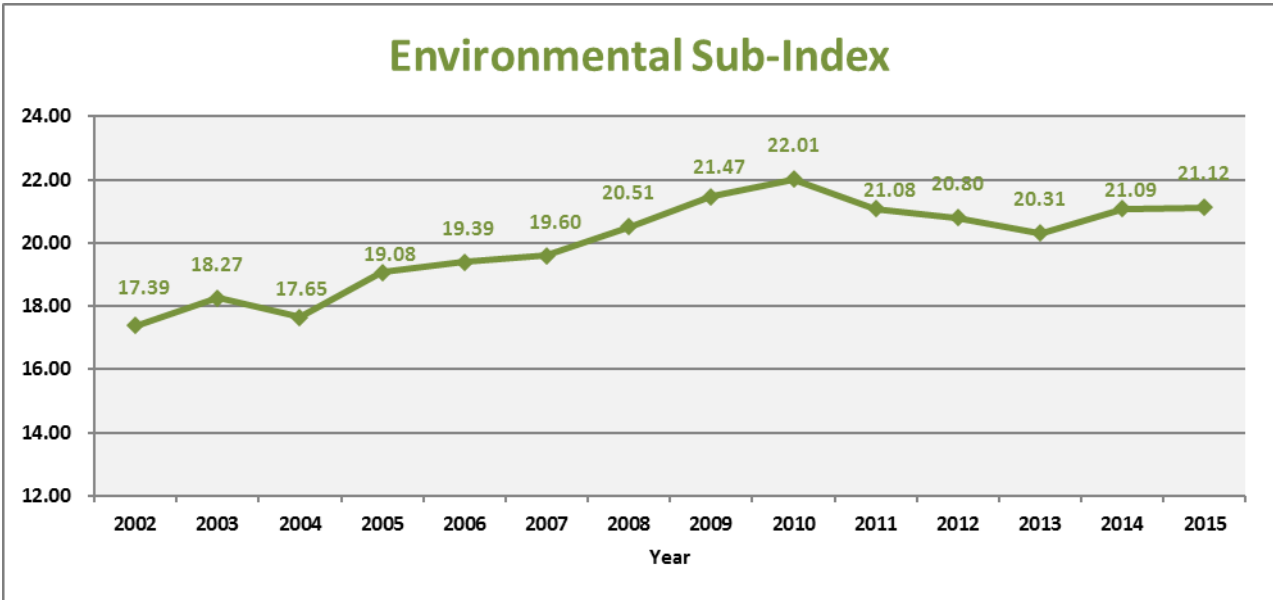
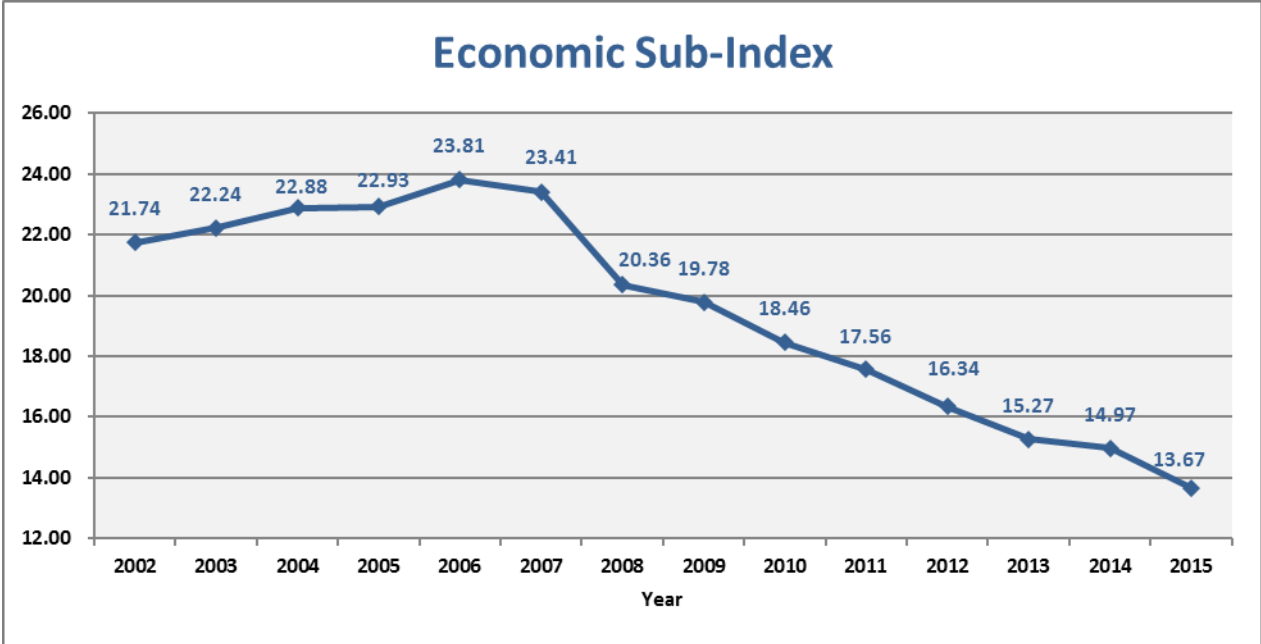
■ revised figures

Appendix 3: Line Charts of CUHK Hong Kong Quality of Life Index and Sub-indices

The higher the indicator scores, the better it performs.

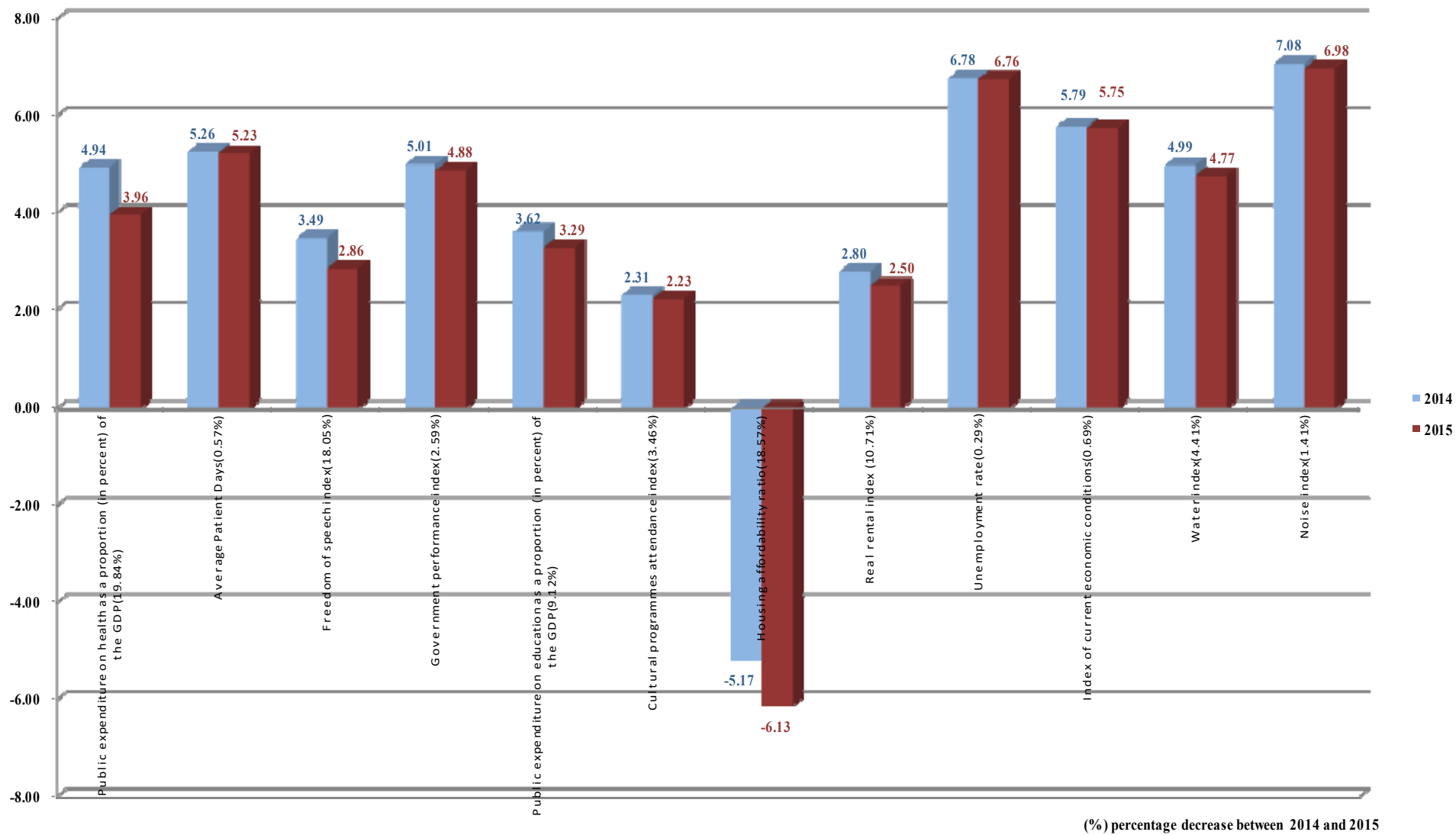






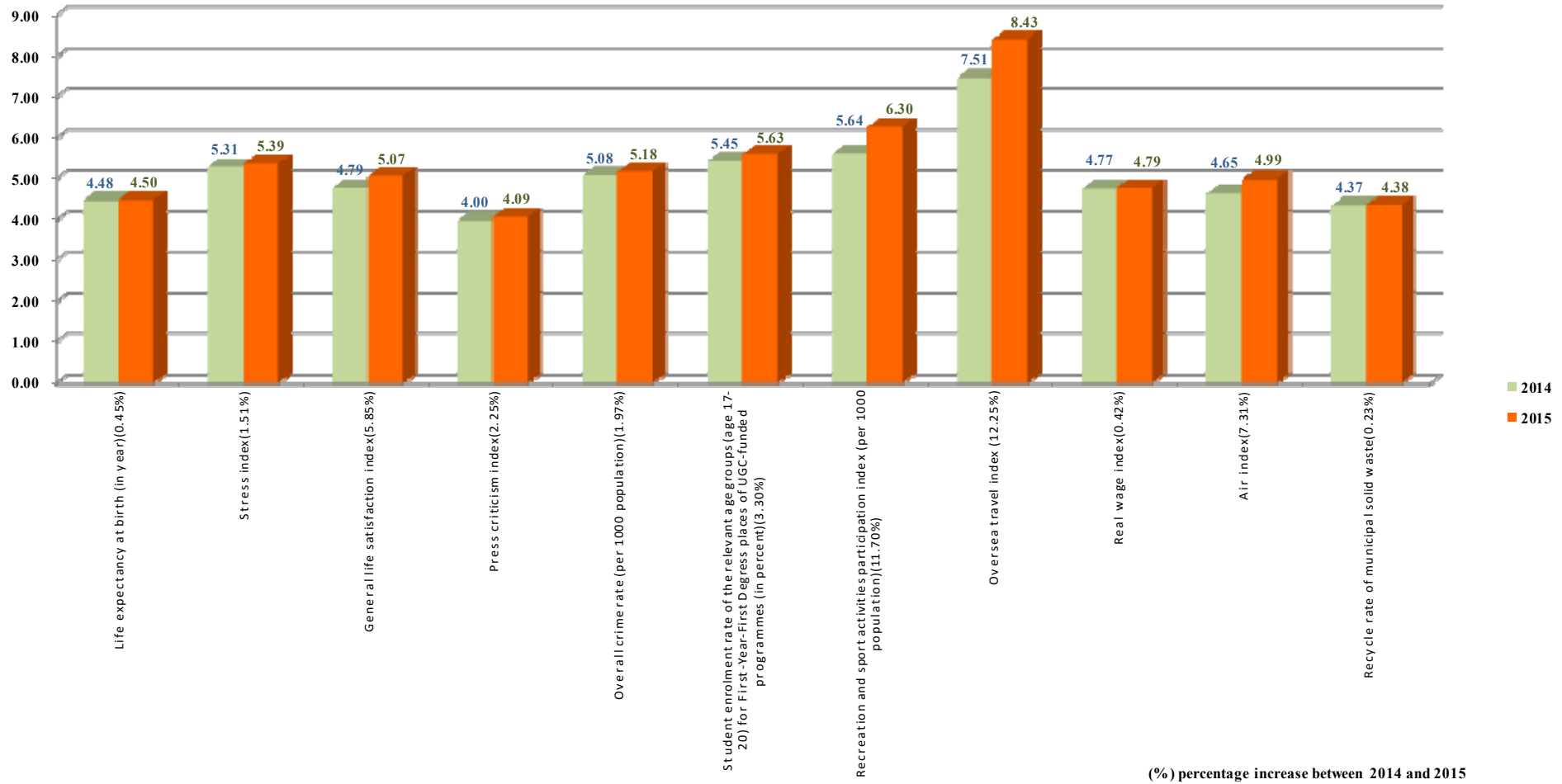
Appendix 4

2014-2015 CUHK Hong Kong Quality of Life Index - Worse Indicators



Appendix 5

2014-2015 CHUK Hong Kong Quality of Life Index - Better Indicators



Working Group of the CUHK Hong Kong Quality of Life Index

Prof. Wong Hung
Director, Centre for Quality of Life, HKIAPS
Associate Professor, Department of Social Work
Tel: 3943-7510
Email: hwong@cuhk.edu.hk

Prof. Chong Tai Leung
Associate Professor
Department of Economics
Tel: 3943-8193
Email: chong2064@cuhk.edu.hk

Prof. Chu S.C. Donna
Associate Professor
School of Journalism and Communication
Tel: 3943-1908
Email: donnachu@cuhk.edu.hk

Prof. Kwong Kai Sun
Associate Professor
Department of Economics
Tel: 3943-8198
Email: kaisunkwong@cuhk.edu.hk

Prof. Li Wei
Assistant Professor
Department of Government and Public Administration
Tel: 3943-7554
Email: liwei@cuhk.edu.hk

Prof. Mak W.S. Winnie
Professor
Department of Psychology
Tel: 3943-6577
Email: wwsmak@psy.cuhk.edu.hk

Prof. Ng Sai Leung
Associate Professor
Department of Geography and Resource Management
Tel: 3943-6527
Email: slng@cuhk.edu.hk

Prof. Ting Kwok Fai
Professor
Department of Sociology
Tel: 3943-6626
Email: kfting@cuhk.edu.hk

Prof. Tsou Jin Yeu
Professor
School of Architecture
Tel: 3943-6558
Email: jinyeutsou@cuhk.edu.hk

Prof. Wang Qian
Associate Professor
Department of Psychology
Tel: 3943-6456
Email: qianwang@psy.cuhk.edu.hk

Dr. Zhang Y. Nick
Honorary Research Associate
Centre for Quality of Life, HKIAPS
Tel: 3943-3400
Email: zhangyin@cuhk.edu.hk

Dr. Tang M.Y. Vera
Postdoctoral Fellow,
Centre for Quality of Life, HKIAPS
Tel: 3943-3400
Email: veratangmy@cuhk.edu.hk