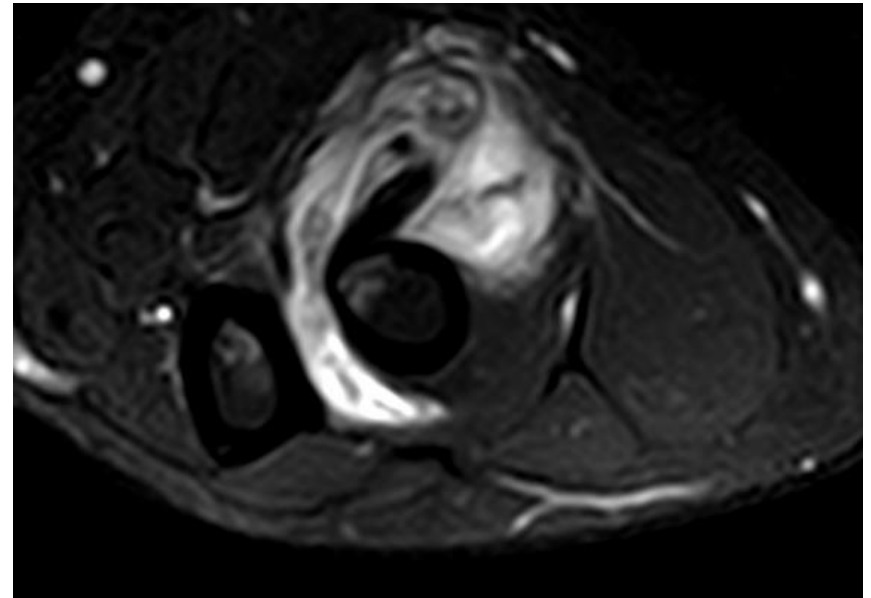
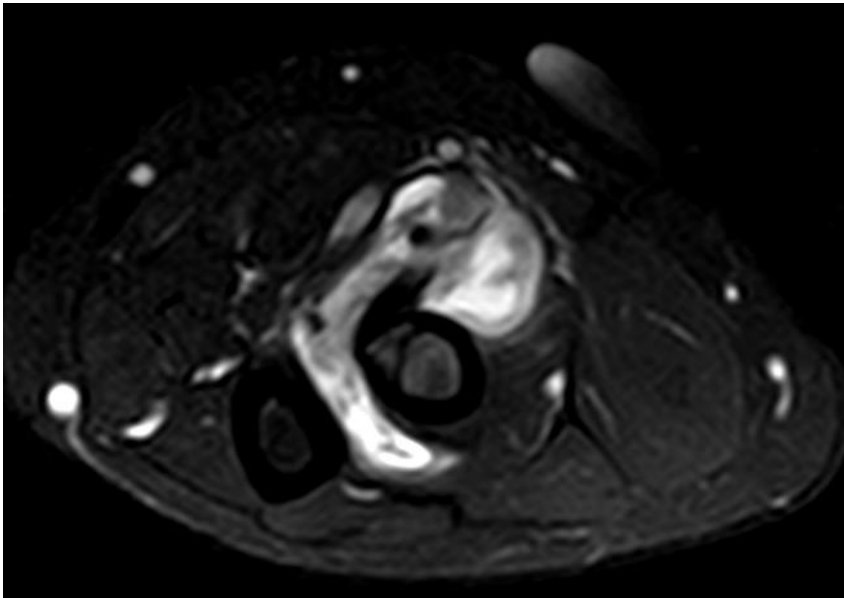


CASE 2

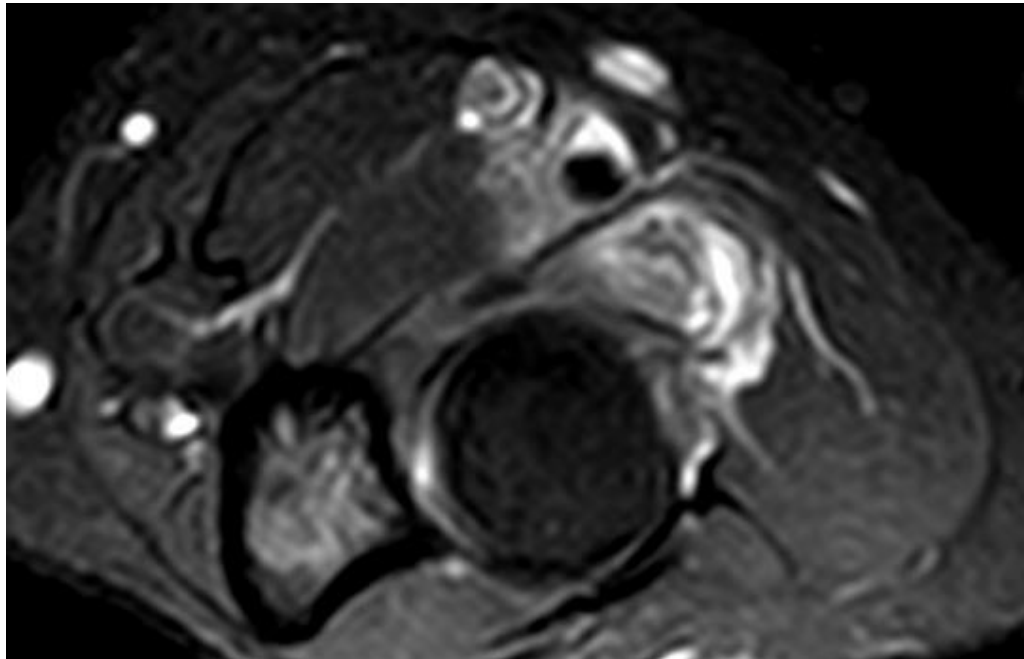
- 40yr/lady
- Presented with left proximal forearm swelling and pain on 20.1.14
- Swelling 2/12 ago
- Serial imaging U/S (biopsy), MRI were done

6.2.2014

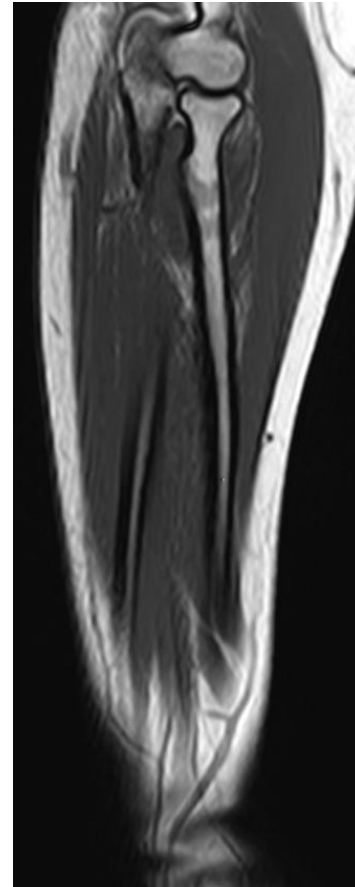
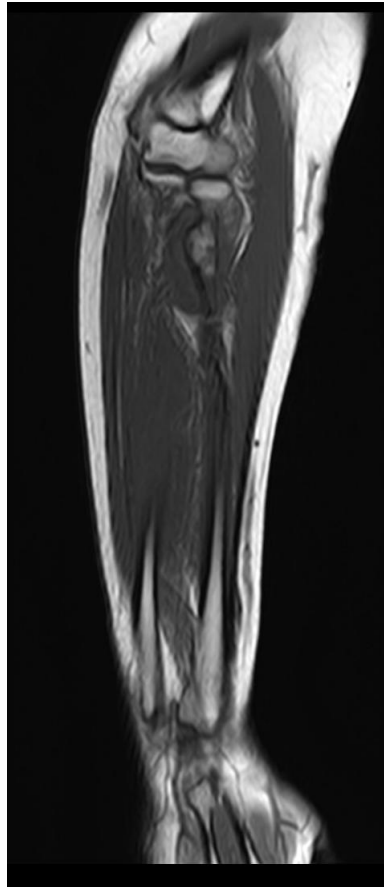
AX T2 FS



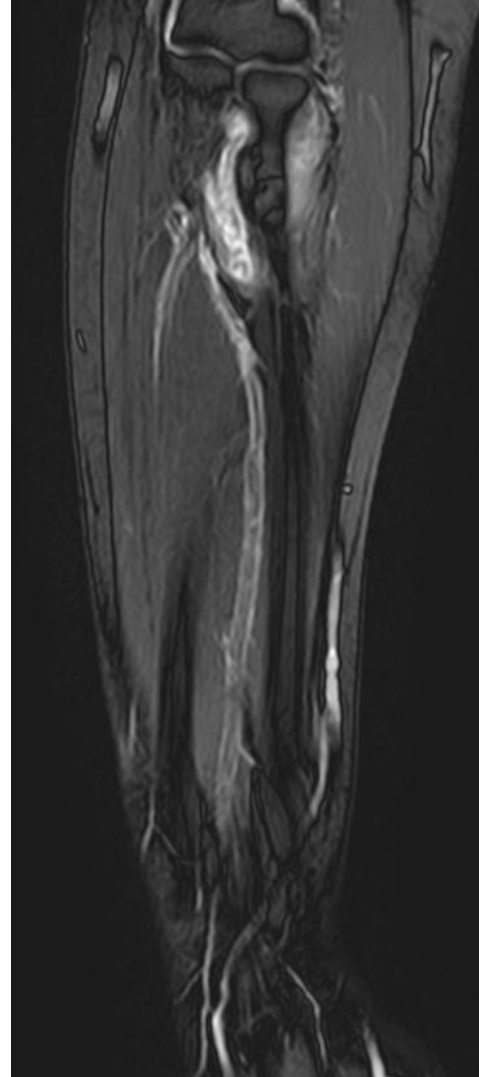
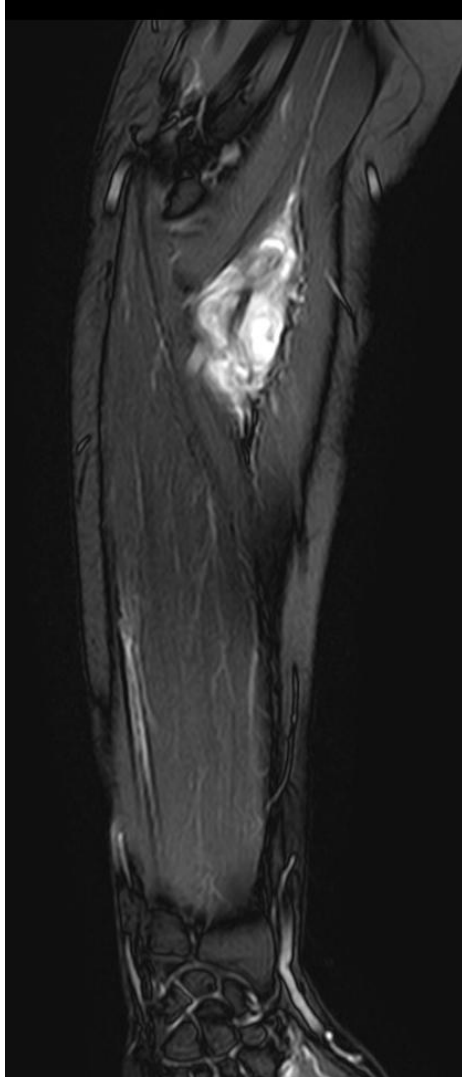
AX T2FS



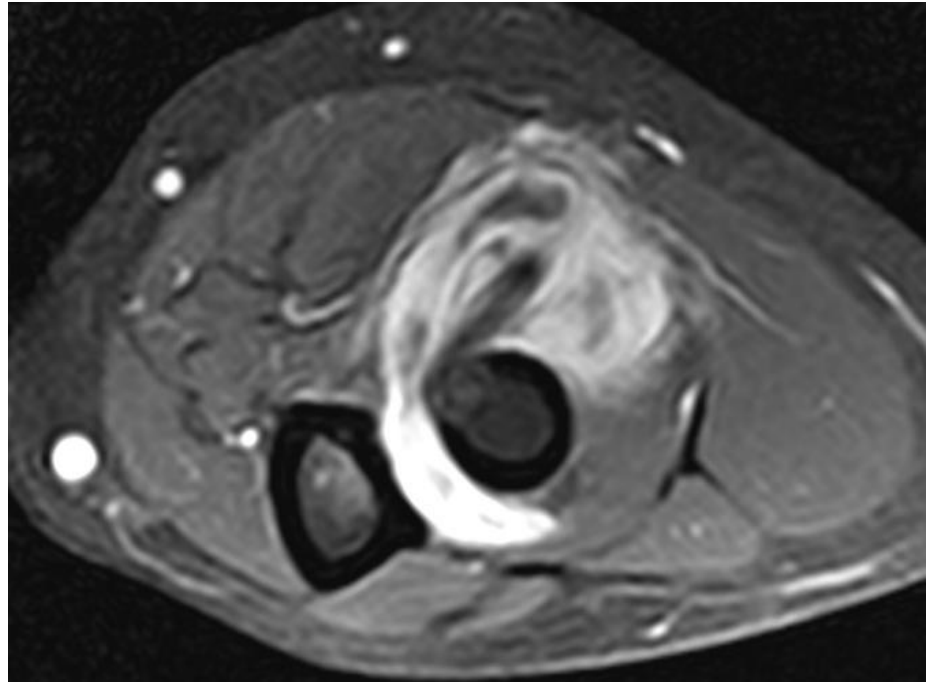
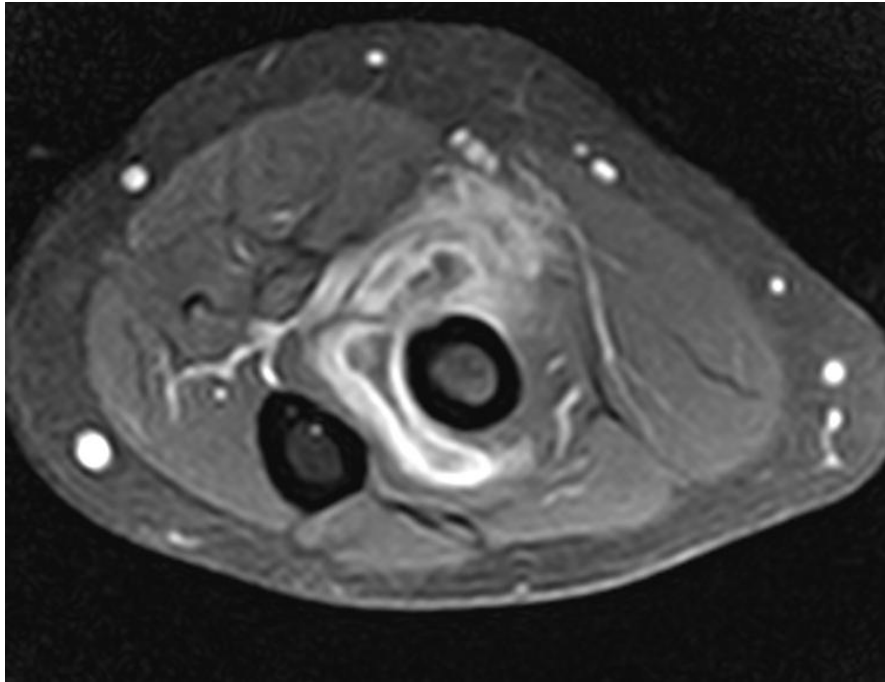
COR T1



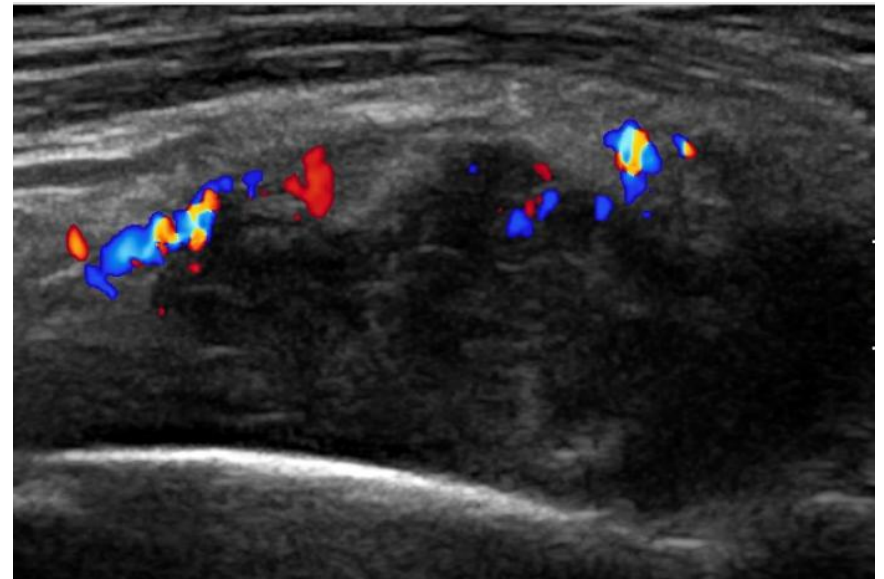
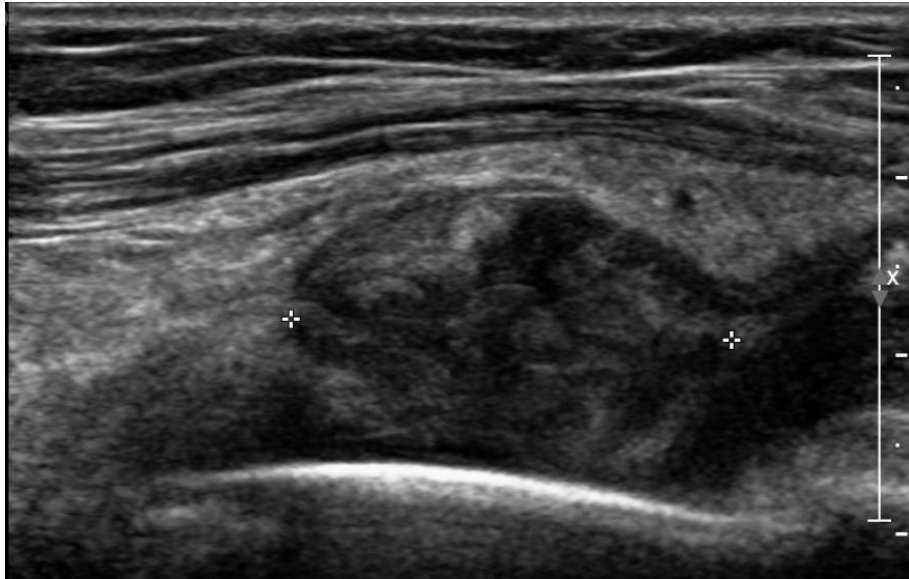
COR T2 FS



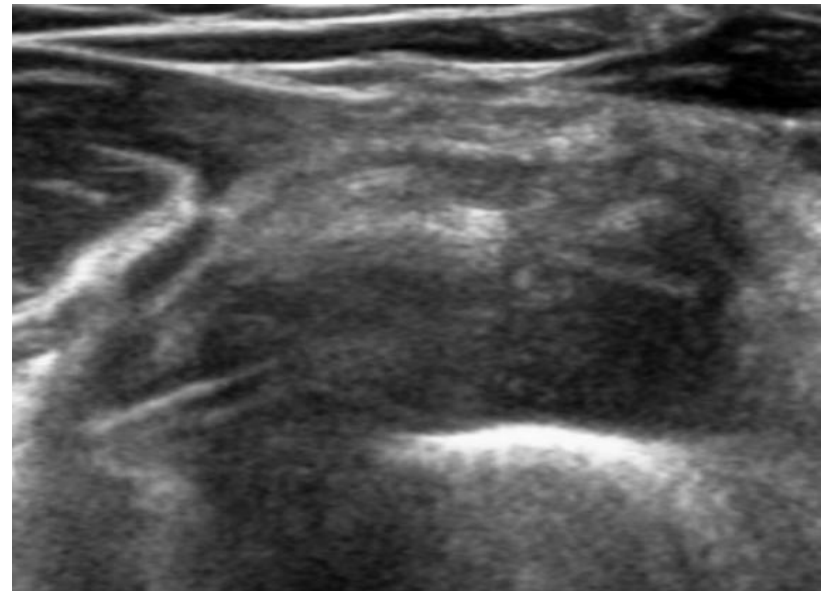
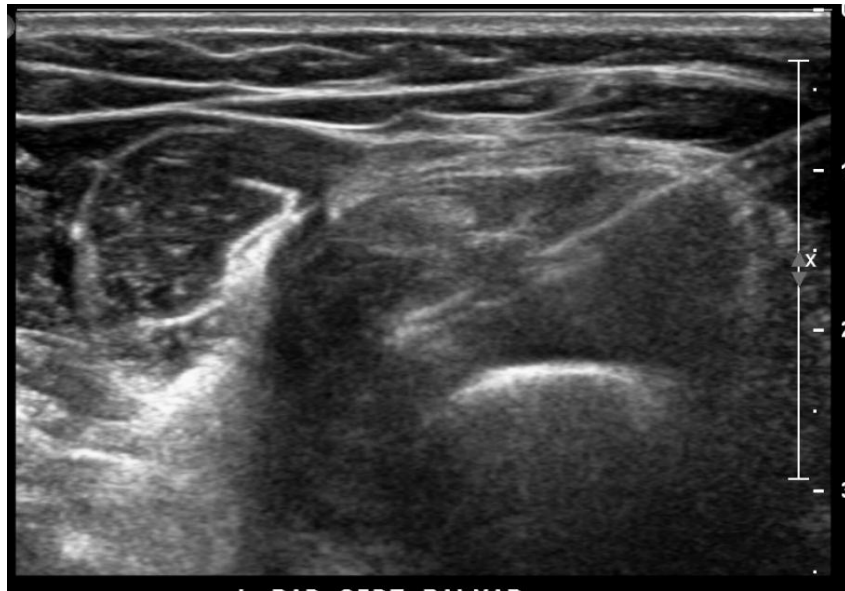
AX T1 FS CONTRAST



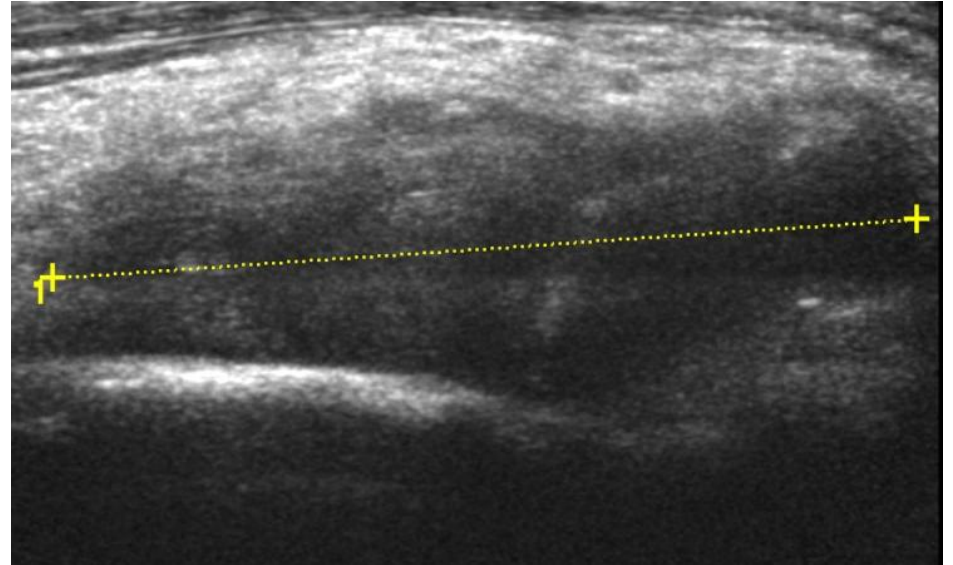
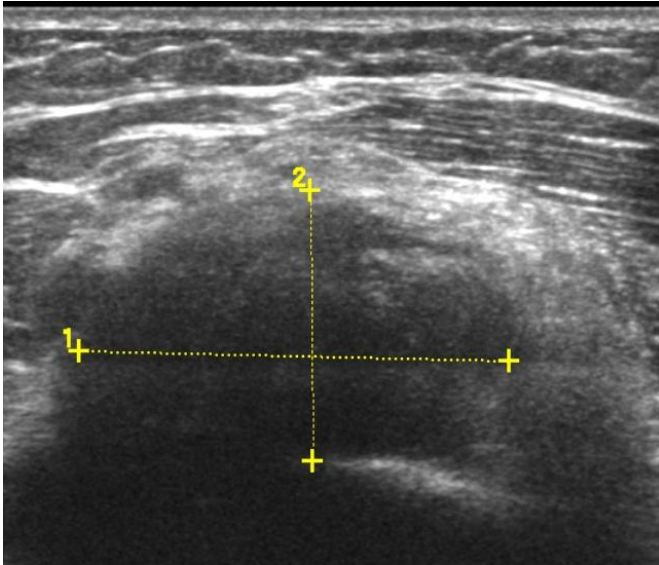
U/S 4.4.2014



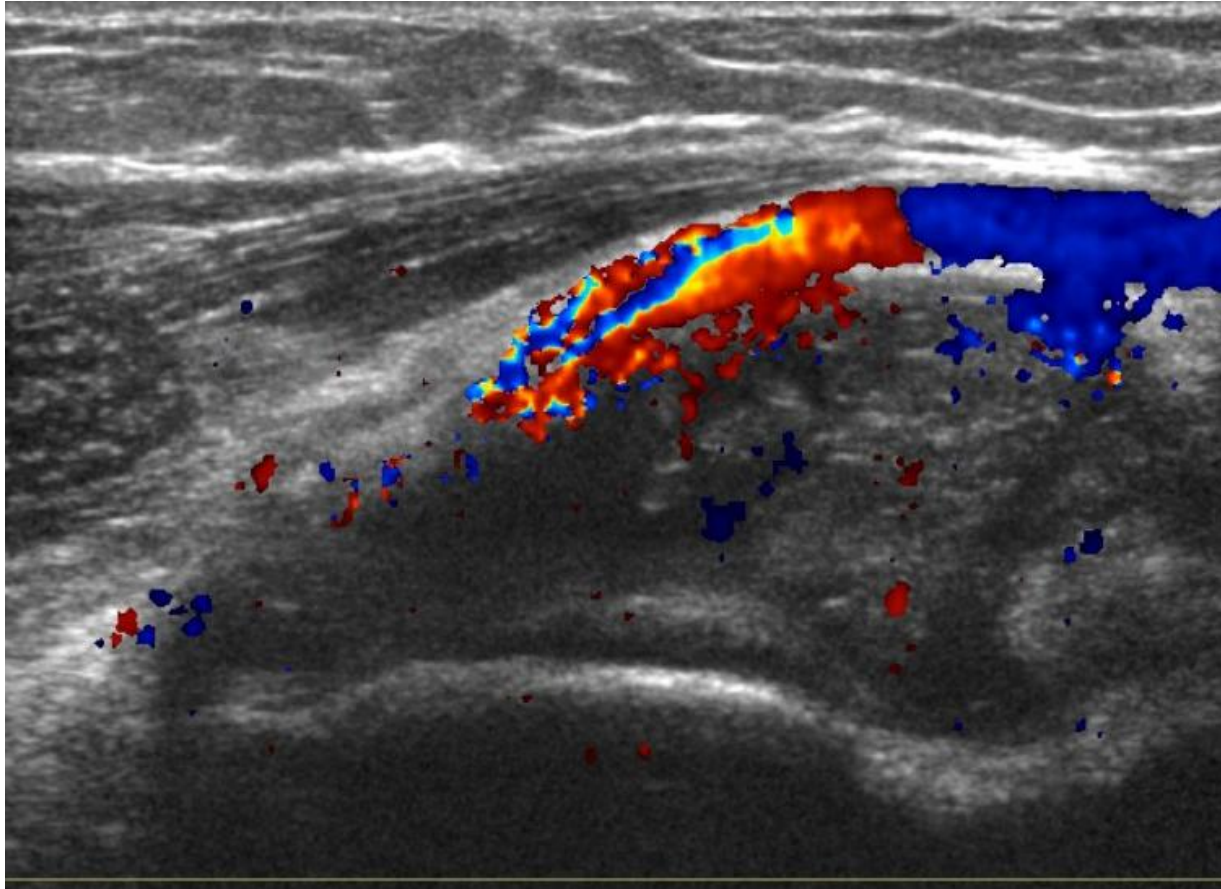
U/S BIOPSY



U/S 9.7.2014

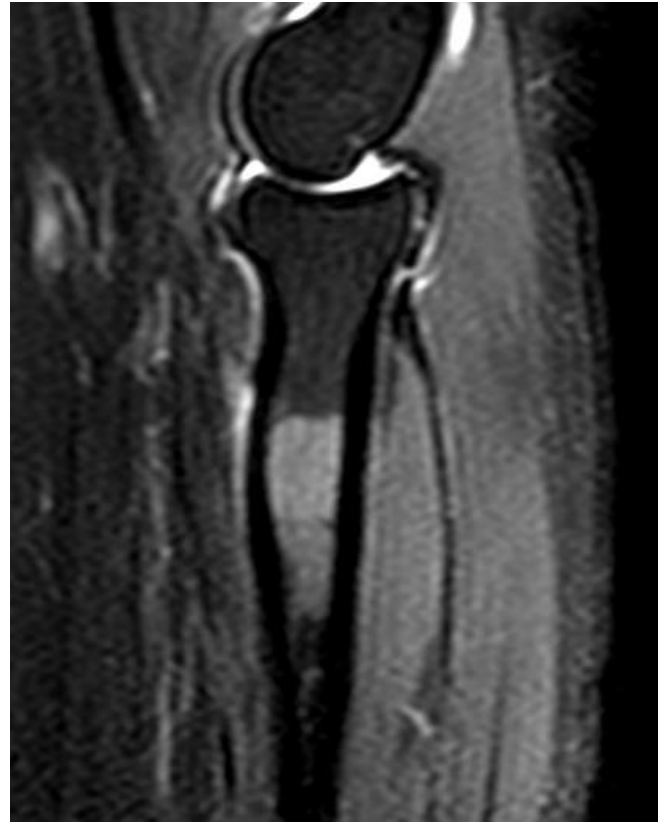
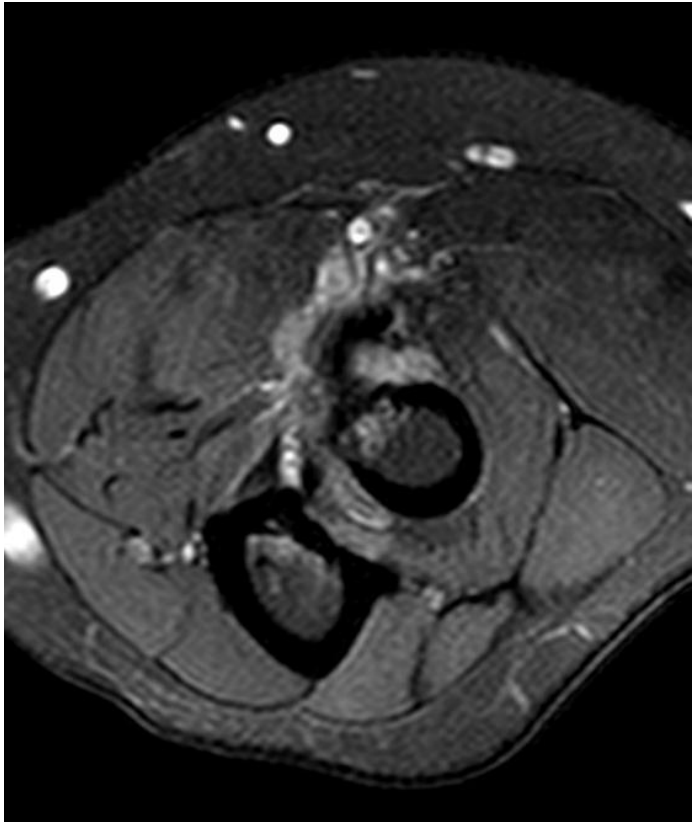


U/S 9.7.14

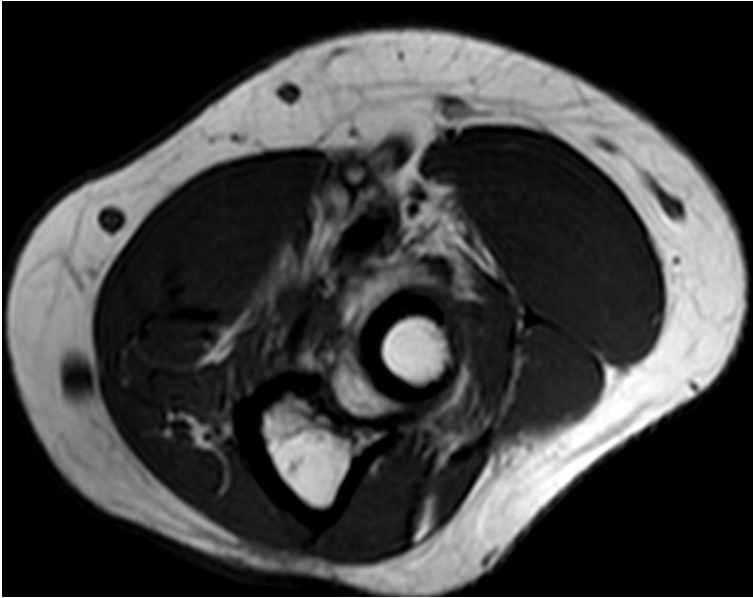


MRI 29.3.16

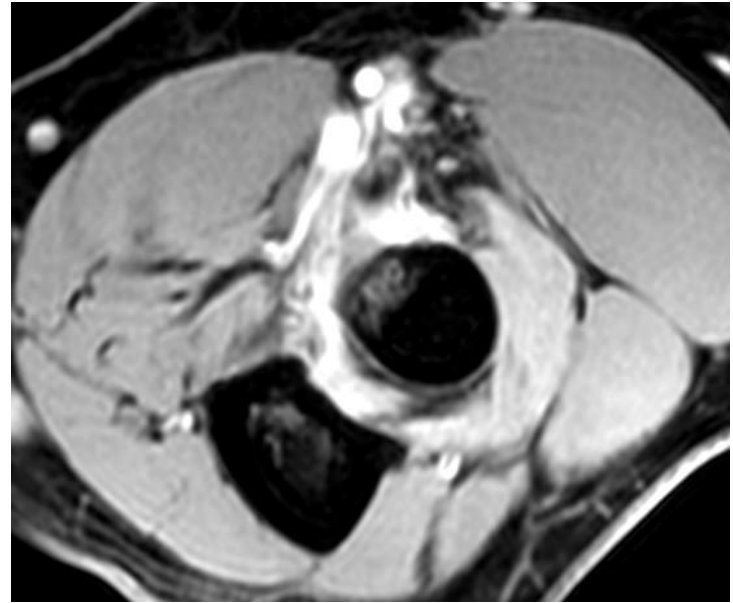
T2 SPAIR



T1 AX

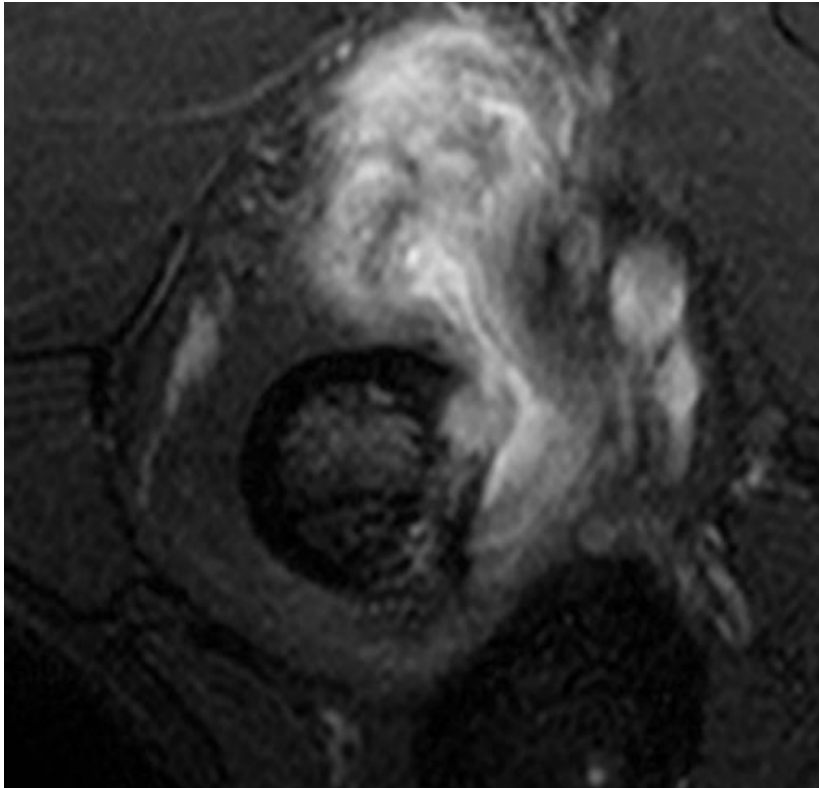


T1FS CONTRAST AX

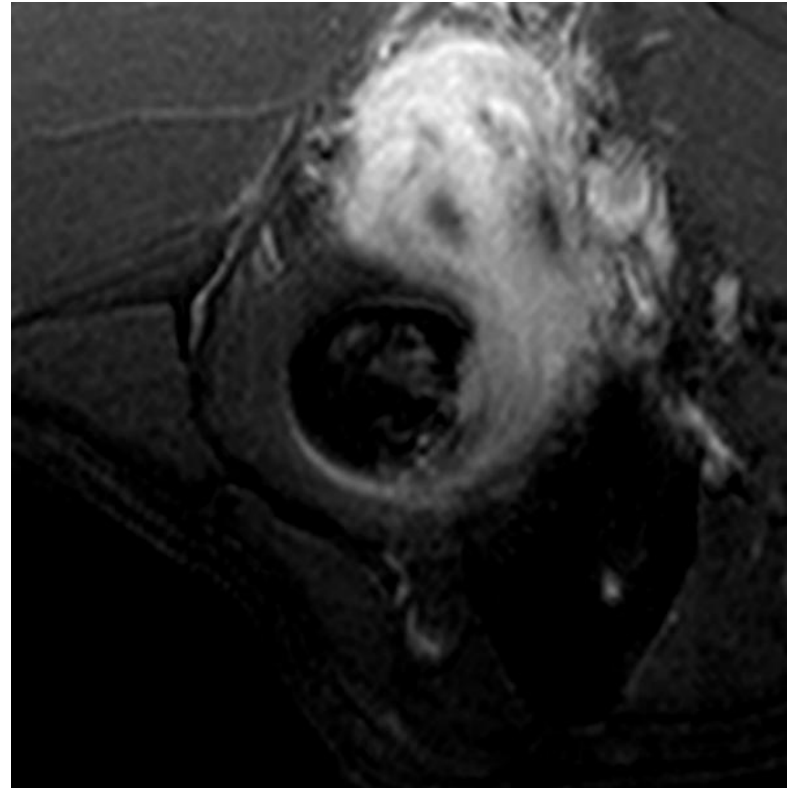


CASE 2

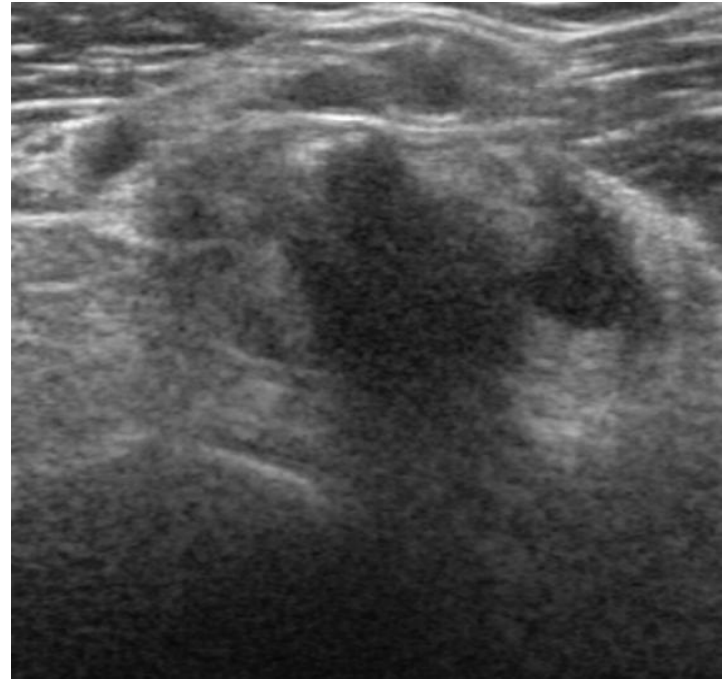
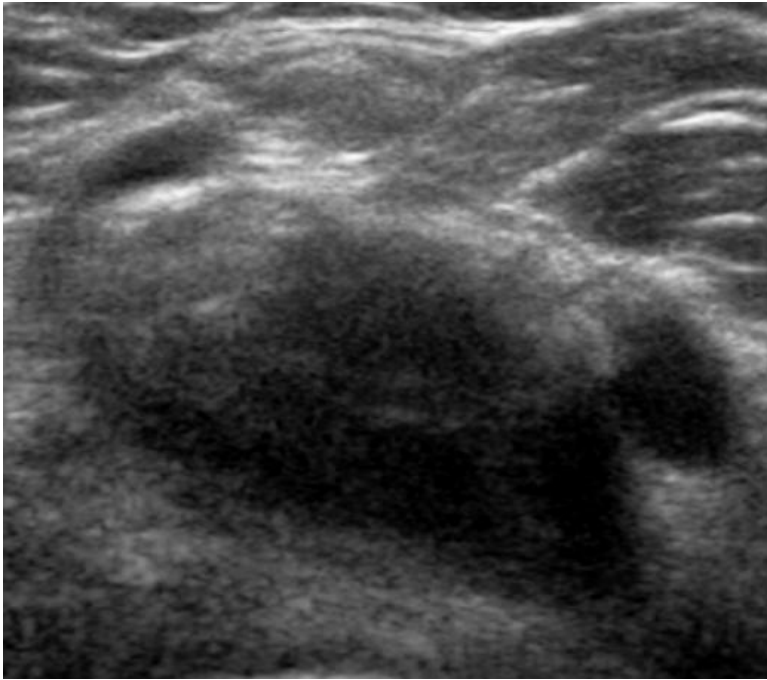
T2 FS



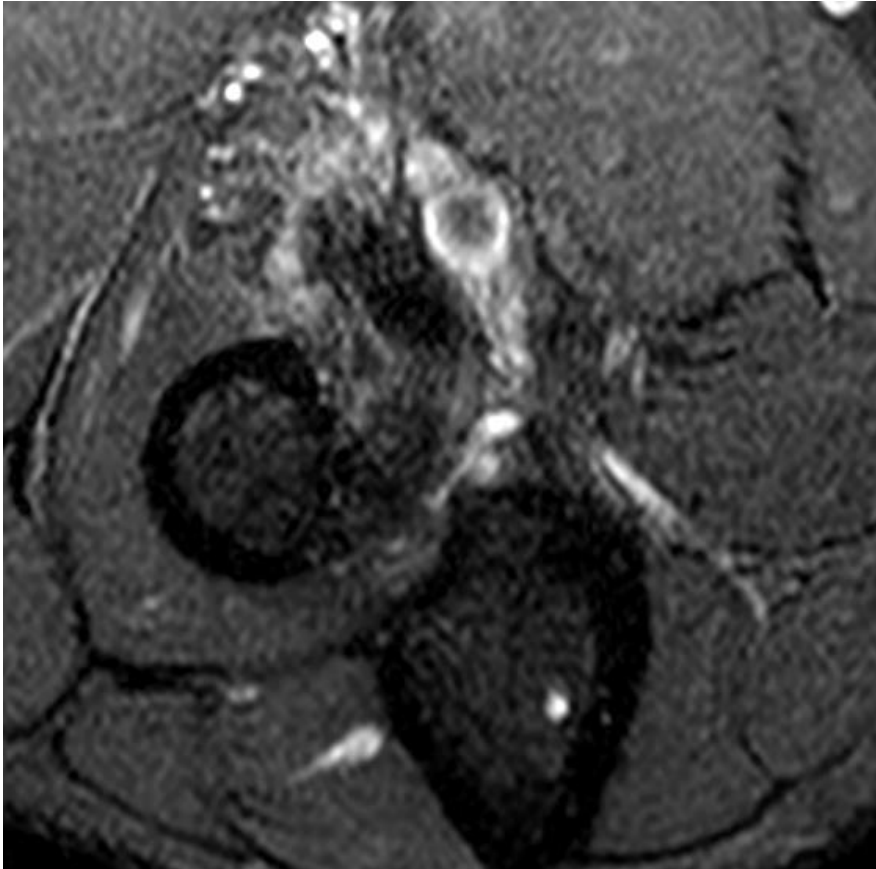
T1 FS POST CONT



ULTRASOUND 1 & 3 months after MRI



T2 FS

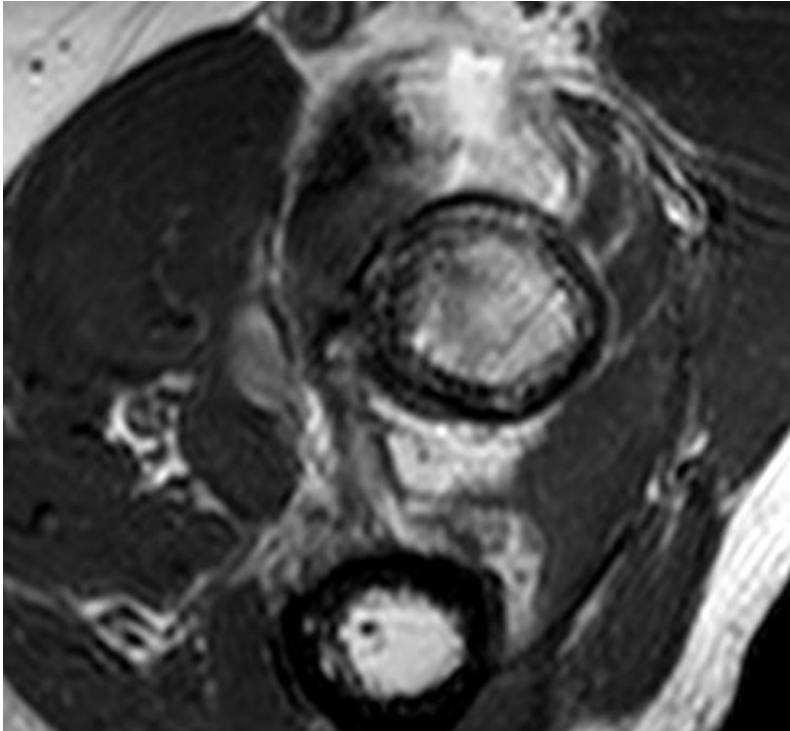


PD FS

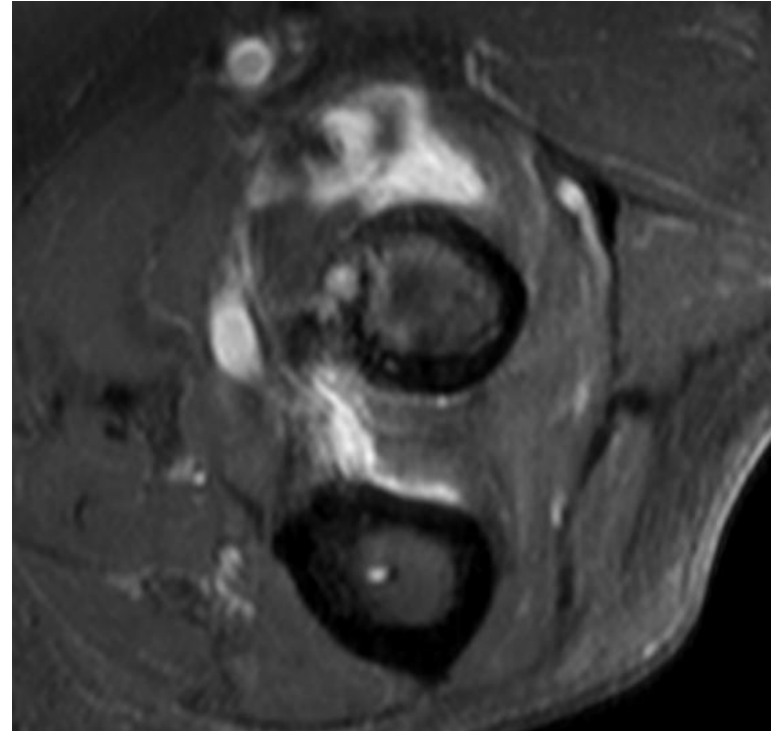


CASE 3

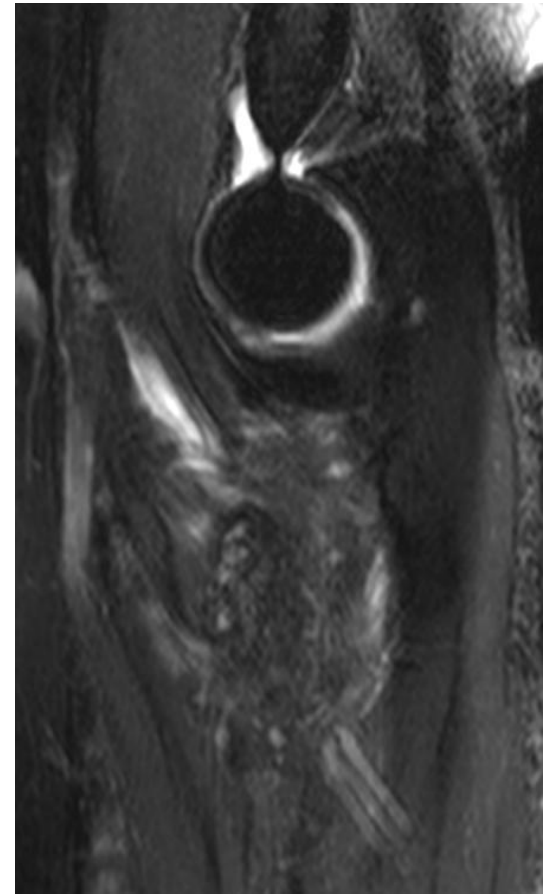
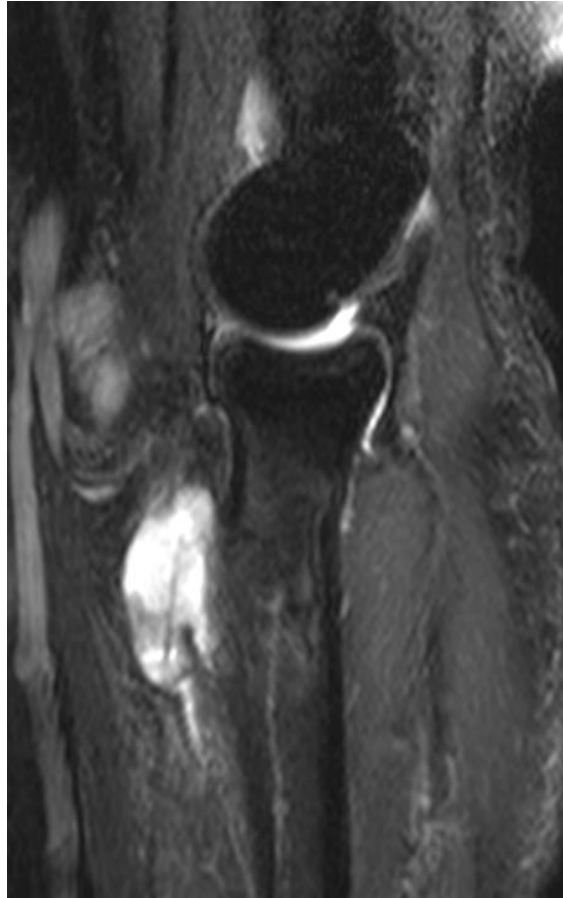
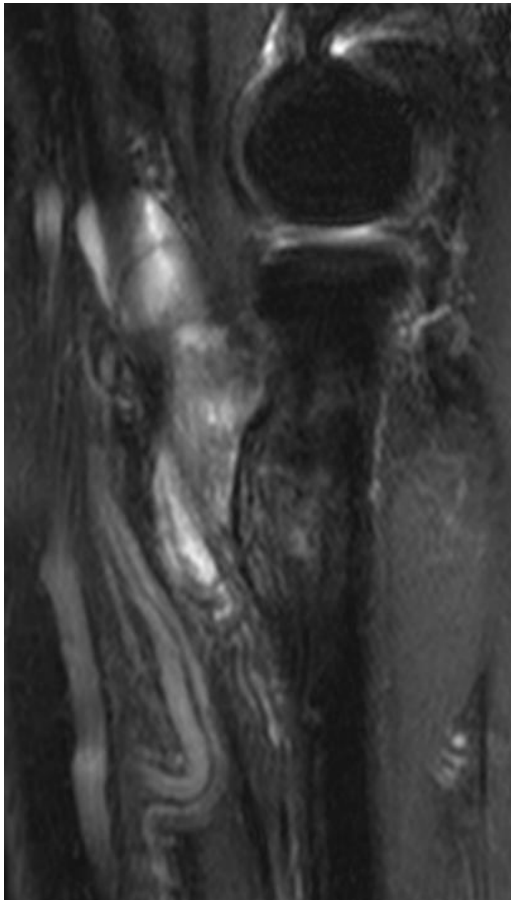
T2 WI



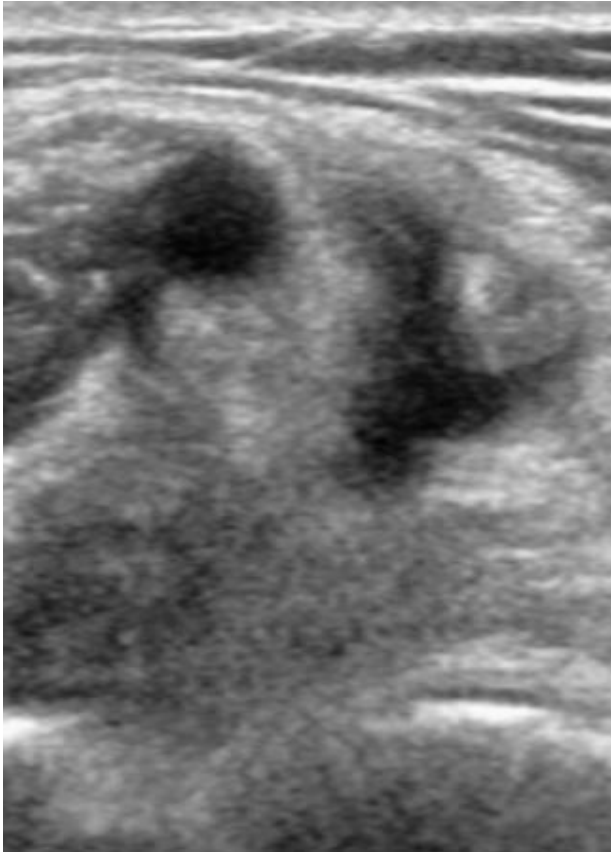
T1 FS POST GAD



T2 FS



U/S 3 weeks after MRI



Bicipitoradial Bursitis

- Degeneration of distal biceps tendon in rare cases may be misdiagnosed as a soft tissue tumor (synovial) especially when associated with bicipitoradial bursitis.
- Common cause of bursitis are repetitive mechanical trauma, rarer causes are RA, chemical/infectious synovitis and synovial chondromatosis